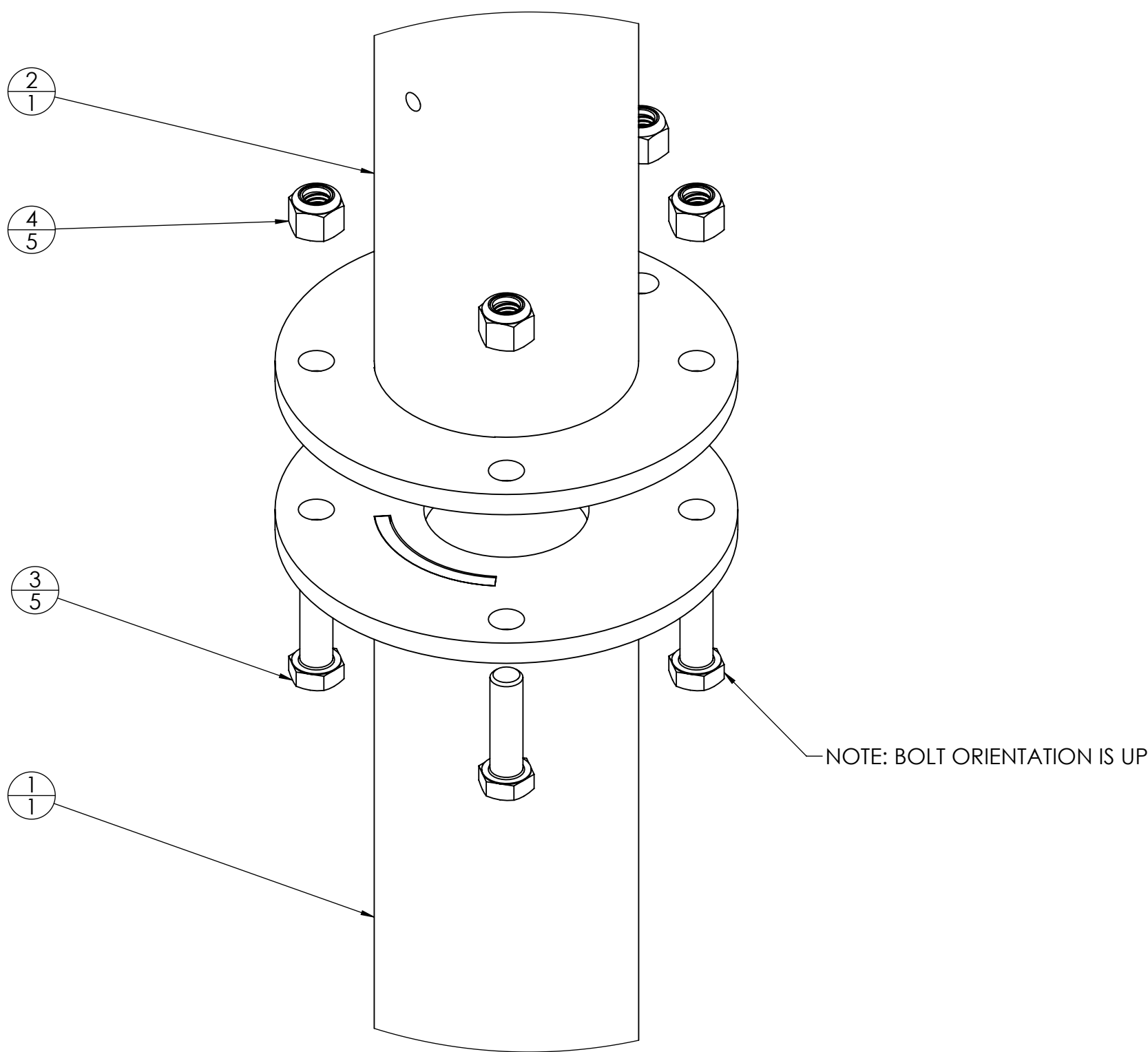
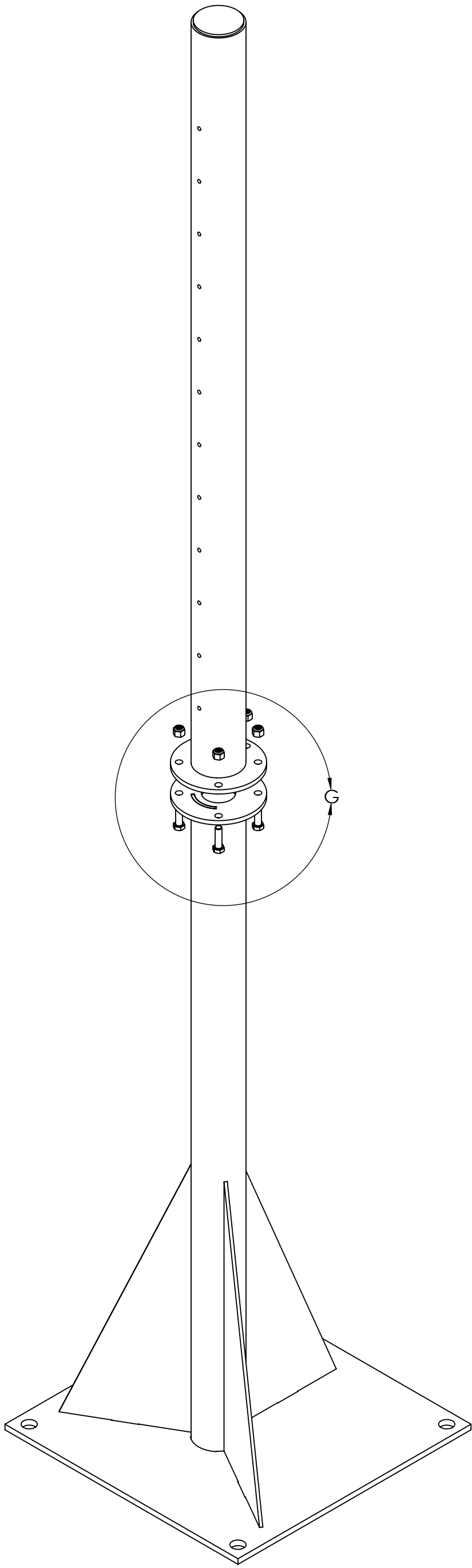
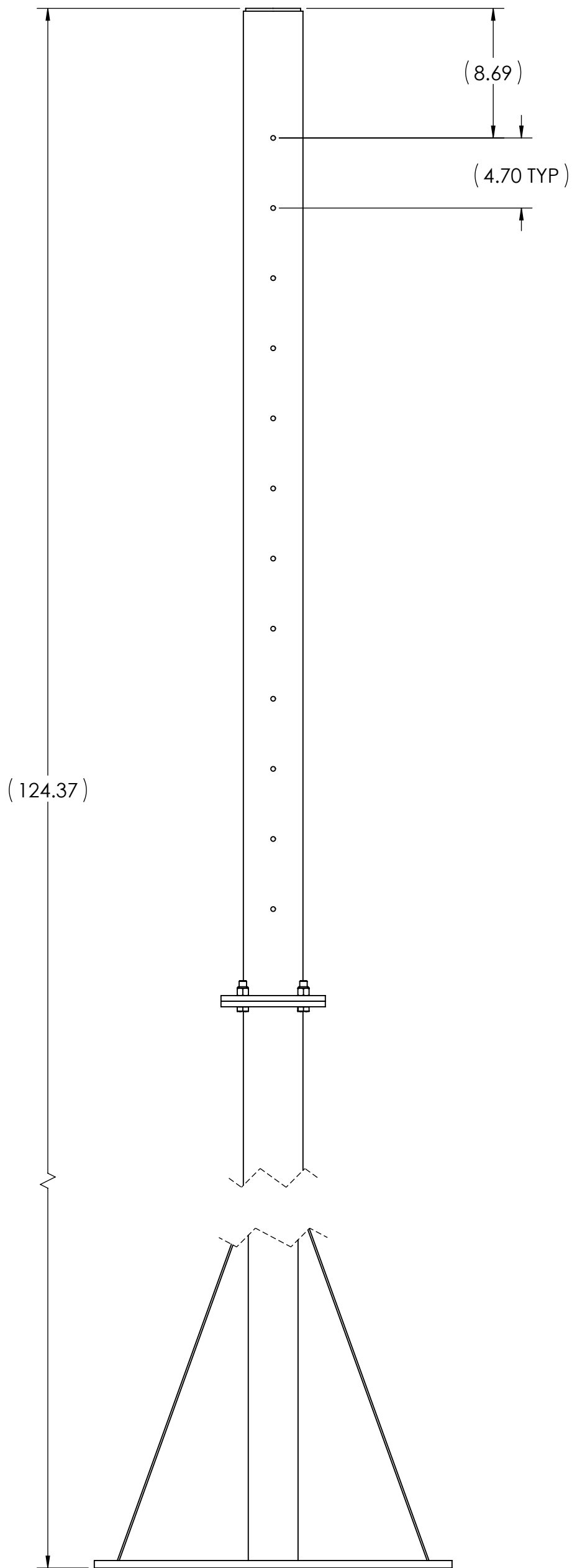
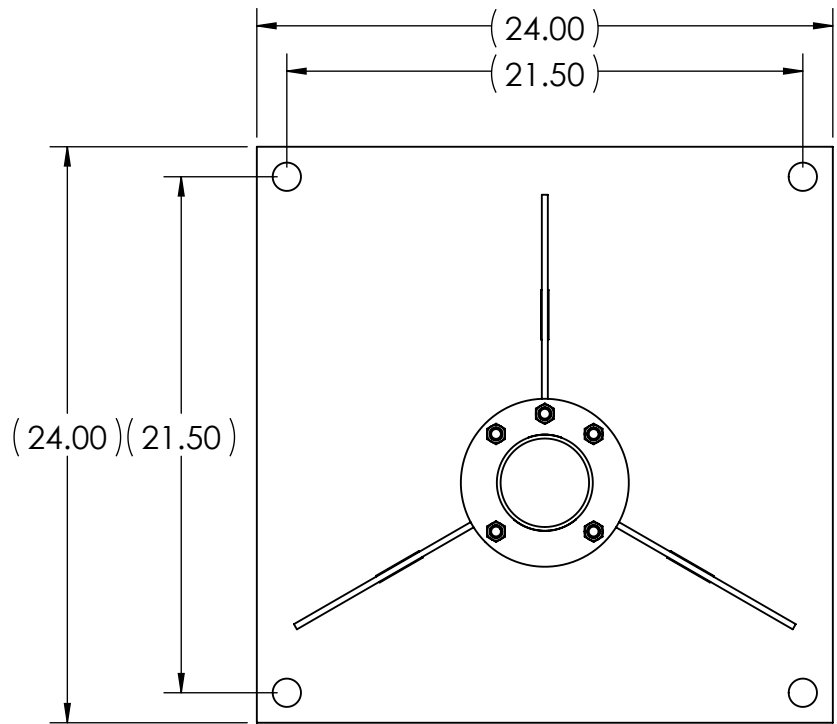


TABULATION			
PARENT PART NO.	ITEM "1"	ITEM "2"	COLOR
105941	187694	187703	RED
178076	188406	188407	YELLOW



ITEM NO.	PART NUMBER	DESCRIPTION	QTY.
1	SEE TABULATION	Lower Pipe Weldment	1
2	SEE TABULATION	Upper Pipe Weldment	1
3	121483	Bolt, 1/2-13NC x 1-3/4 Hex Head	5
4	14660	NUT, LOCK 1/2-13 HEX NYLON INSERT ZINC PLATED	5

DESIGNED BY / DATE D.HAFSTAD 12/15/2017	DRAWN BY / DATE D.HAFSTAD 12/15/2017	PEER APPROVAL / DATE D.HAFSTAD 12/15/2017	<b>RICE LAKE</b> WEIGHING SYSTEMS
TREATMENT NONE	THIS DRAWING AND INFORMATION CONTAINED HEREIN IS AND REMAINS THE PROPERTY OF RICE LAKE WEIGHING SYSTEMS INC. - HEREINAFTER REFERRED TO AS RLWS. IT MAY BE USED ONLY FOR RLWS' PROPOSAL AND/OR ITS CUSTOMER'S ORDERS. IT SHALL NOT BE DISCLOSED OR COPIED WITHOUT RLWS SPECIFIC WRITTEN CONSENT AND SHALL BE IMMEDIATELY RETURNED UPON REQUEST.	UNLESS OTHERWISE SPECIFIED UNITS TO BE INCHES ALL THREADS TO BE CLASS 2 ALL DIMENSIONS APPLICABLE AFTER TREATMENT	
NUMBER OF CRANES: MINIMUM CRANE CAPACITY: ESTIMATED WEIGHT (POUNDS) 201.01	DO NOT SCALE DRAWING SURFACE FINISH TOLERANCES DRAWING TOLERANCES UNLESS OTHERWISE SPECIFIED .XX: ±.03 .XXX: ±.000 ANGLE: ±1°	DESCRIPTION POLE ASSEMBLY, 10FT, KIOSK SWING ARM	
SCALE 1:8	SHEET 1 OF 1	MATERIAL SEE BOM	REV D