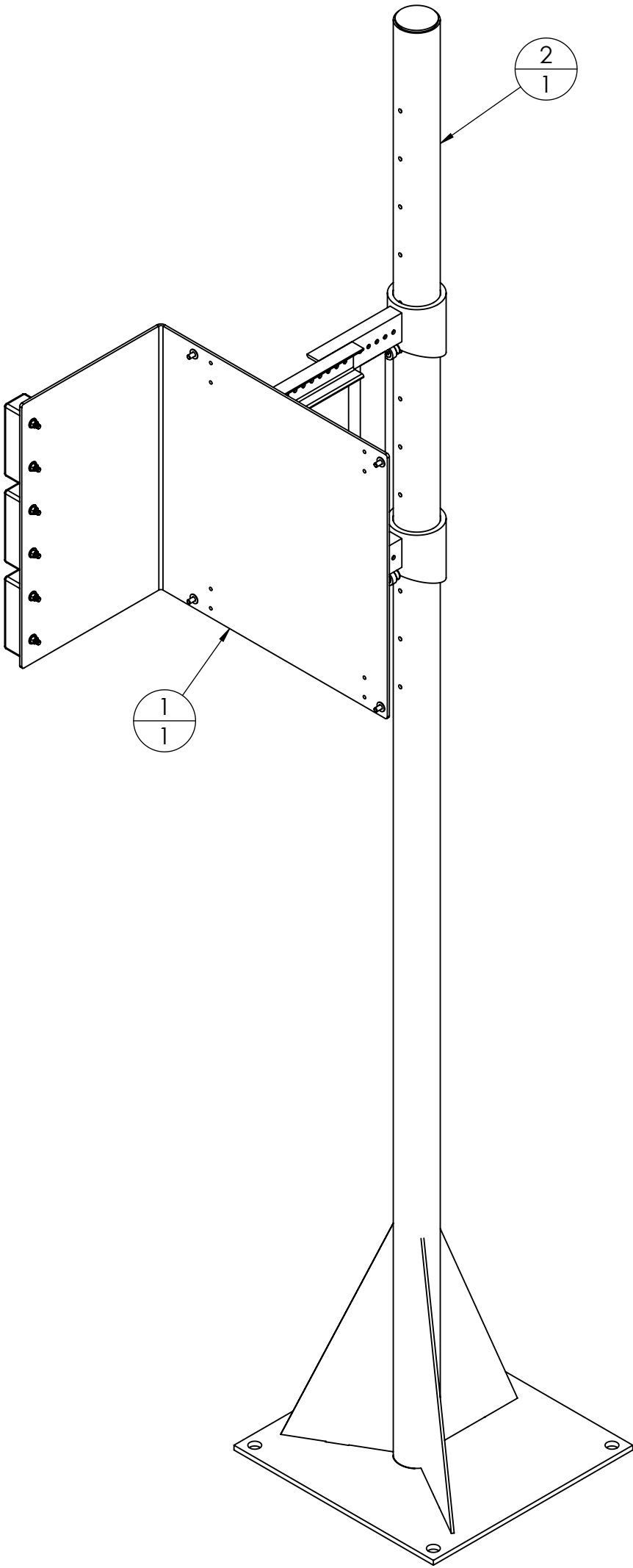
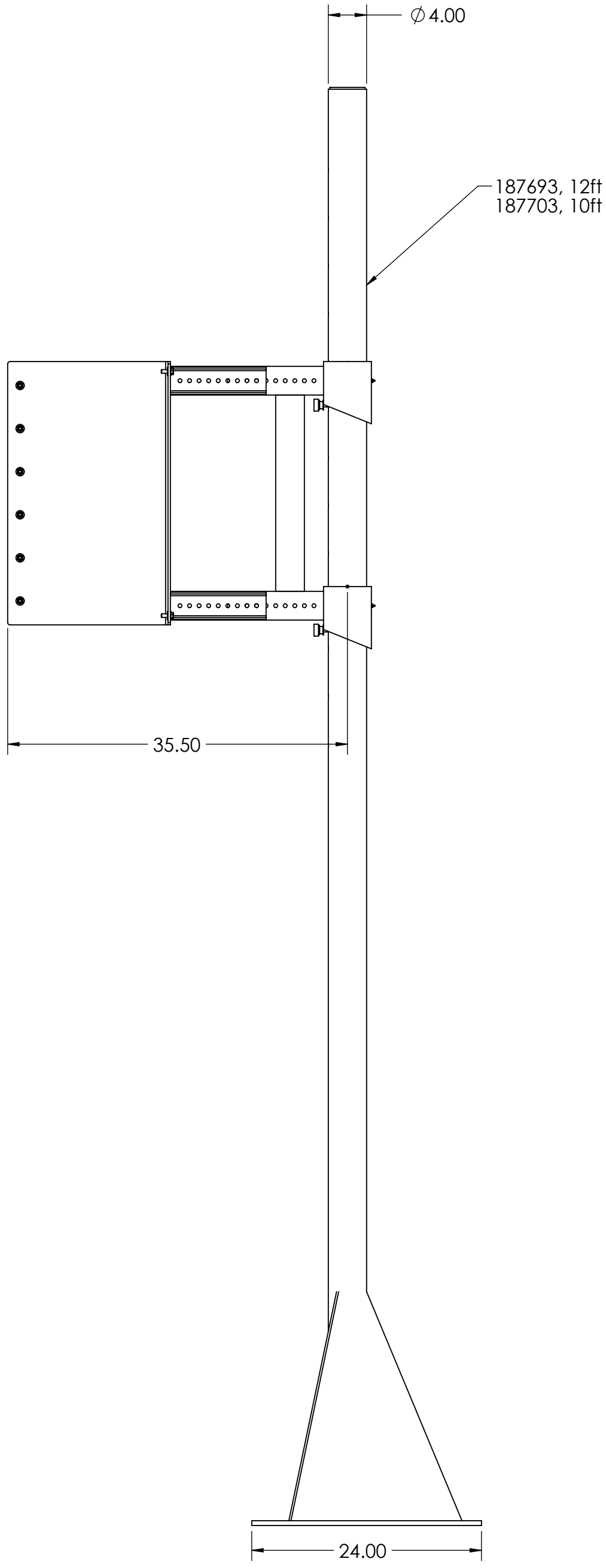
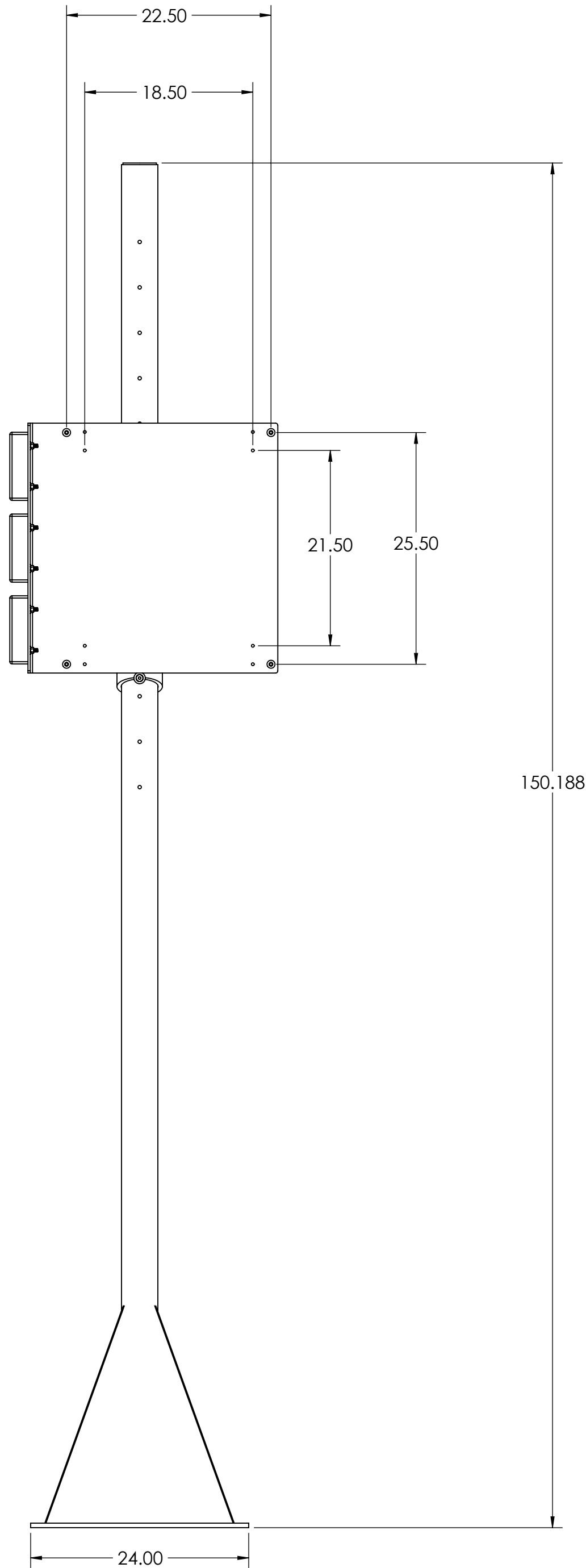
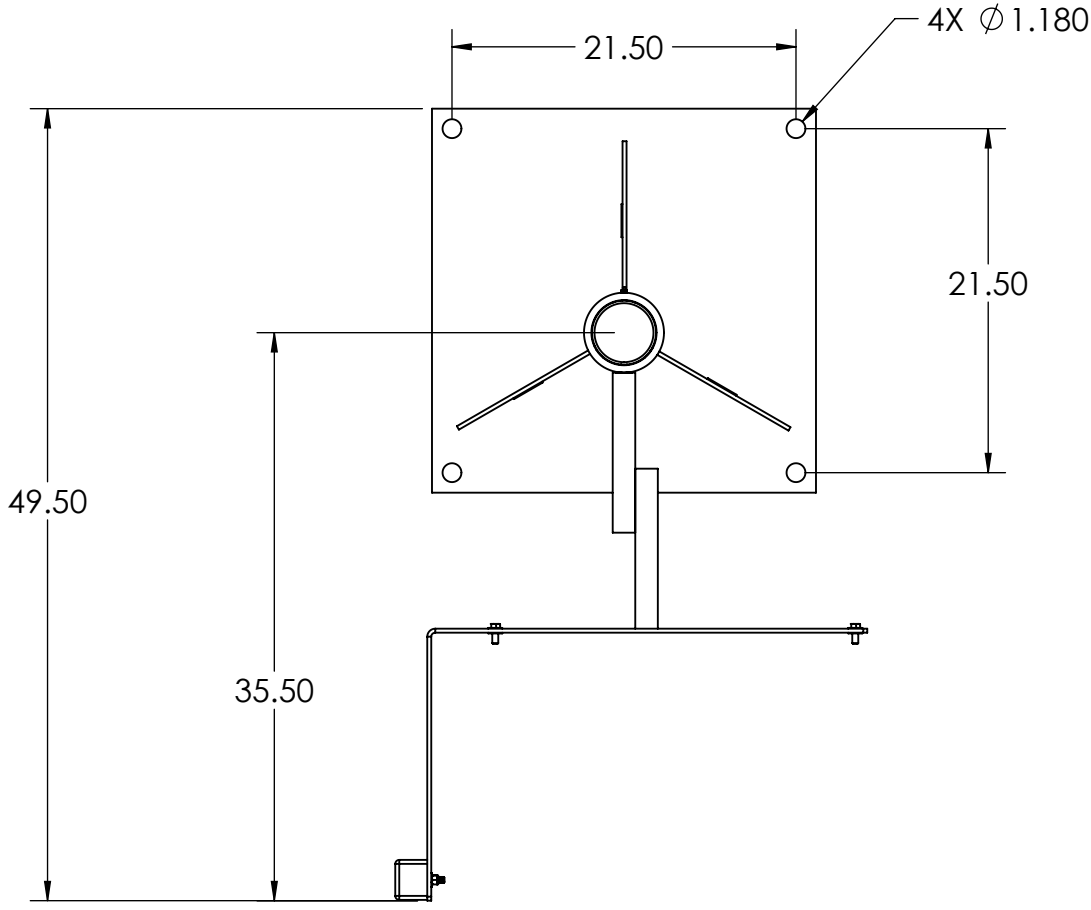



REVISION				
REV	ECO	DESCRIPTION	INIT	DATE
A	-	ENGINEERING RELEASE	SPJ	08/01/2019



NOTES:

1. BREAK SHARP EDGES.

BOM Table				
ITEM NO.	PART NO.	DESCRIPTION		QTY.
1	105939	Weldment, Swing Arm Kiosk		1
2	105940	Pole Weldment, 12ft. Supported, Free Standing, 4.5in O.D. for Kiosk Swing Arm		1
DESIGNED BY / DATE S.JOHNSON 08/12/2016		DRAWN BY / DATE S.JOHNSON 08/01/2019		PEER APPROVAL DATE S.JOHNSON 08/01/2019
TREATMENT	NONE	THIS DRAWING AND INFORMATION CONTAINED HEREIN IS AND REMAINS THE PROPERTY OF RICE LAKE WEIGHING SYSTEMS INC. - HEREINAFTER REFERRED TO AS RLWS. IT MAY BE USED ONLY FOR RLWS' PROPOSAL AND/OR ITS CUSTOMER'S ORDERS. IT SHALL NOT BE DISCLOSED OR COPIED WITHOUT RLWS' SPECIFIC WRITTEN CONSENT AND SHALL BE IMMEDIATELY RETURNED UPON REQUEST.		
		DESCRIPTION		
NUMBER OF CRANES:		SWING ARM-POLE/BASE, 12FT. ASSEMBLY AND HARDWARE		
MINIMUM CRANE CAPACITY:		SCALE: 1:12	SHEET: 1 OF 1	MATERIAL: SEE BOM
ESTIMATED WEIGHT (POUNDS): 232.56		THIRD ANGLE PROJECTION		REV: A