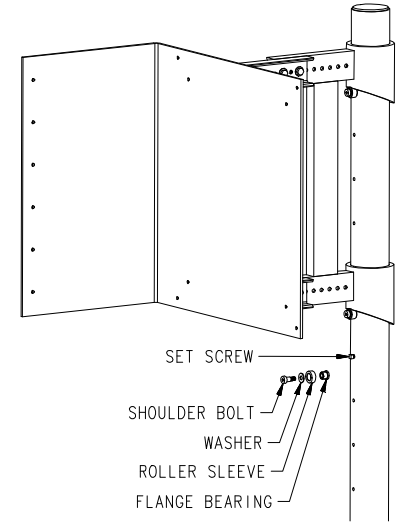
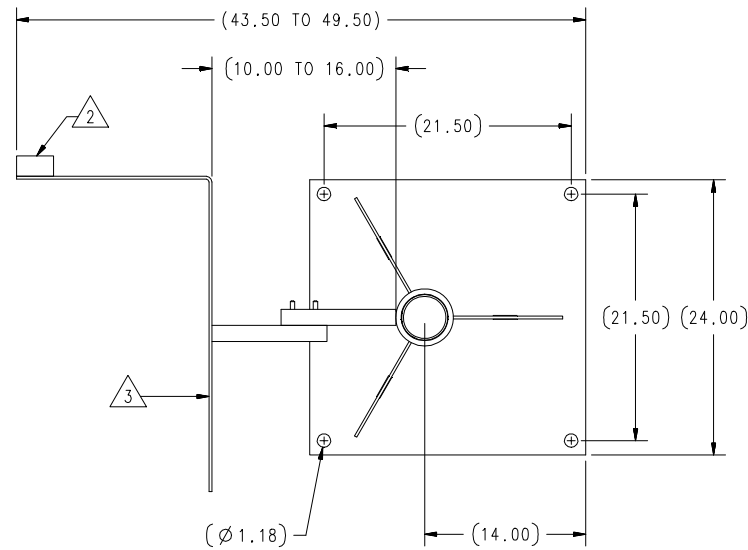
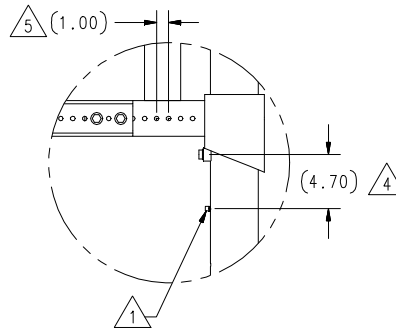
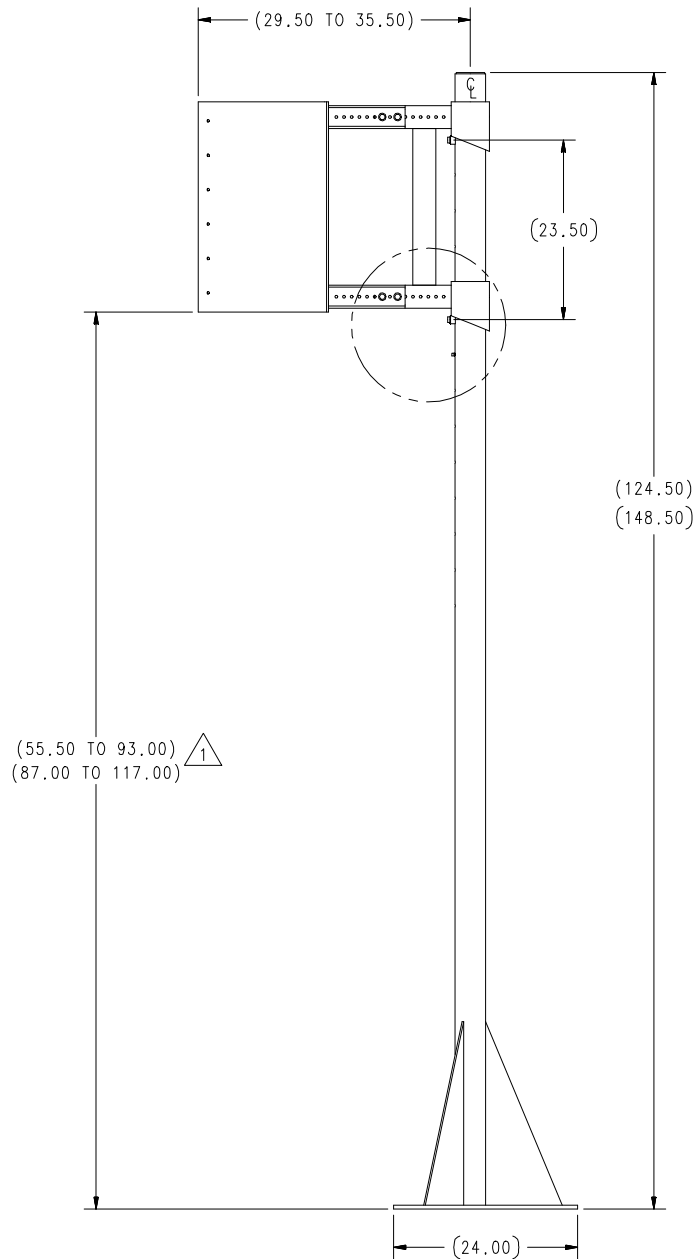



REVISION			
REV	REFERENCE	INIT	DATE
A	ECO14859...REDESIGN SWING ARM AND POLE WELDMENTS.	JFC	5/8/13
B	ECO15515...INCREASED SIDE FLANGE TO 17.00	JFC	4/18/16



## NOTES:

1. CUSTOMER IS RESPONSIBLE FOR DETERMINING ACTUAL PLACEMENT AND FOLLOW THE SPECIFIED GUIDELINES ON THIS PRINT. THE SET SCREW SHOULD BE INSTALLED IN THE HOLE JUST BELOW THE BOTTOM COLLAR.
2. RUBBER BUMPERS IN KIT TO MOUNT ONTO BACKSIDE OF SIDE FLANGE.
3. MOUNTING PLATE SHOWN FOR REFERENCE ONLY. SEE BOM FOR CORRECT PLATE.
4. VERTICAL ADJUSTMENT 4.70" (CENTER TO CENTER).
5. HORIZONTAL ADJUSTMENT 1.00" (CENTER TO CENTER).

MATERIAL	UNLESS OTHERWISE SPECIFIED UNITS TO BE INCHES			THIS DRAWING AND ALL INFORMATION CONTAINED HEREIN IS AND REMAINS THE PROPERTY OF RICE LAKE WEIGHING SYSTEMS INC. AND IS CONFIDENTIAL. IT IS SUBMITTED AND MAY BE USED ONLY IN CONNECTION WITH RICE LAKE WEIGHING SYSTEMS' PROPOSAL AND/OR ITS CUSTOMERS' ORDERS. IT SHALL NOT BE DISCLOSED TO OTHERS OR COPIED WITHOUT RICE LAKE WEIGHING SYSTEMS' SPECIFIC WRITTEN CONSENT AND SHALL BE IMMEDIATELY RETURNED UPON REQUEST.		
SEE BOM	ALL THREADS TO BE CLASS 2					
ALL DIMENSIONS APPLICABLE AFTER TREATMENT						
DO NOT SCALE DRAWING						
TREATMENT	SURFACE FINISH	DRAWING TOLERANCES UNLESS OTHERWISE SPECIFIED		TITLE  SWING ARM, INSTALLATION		
		TOL: DECIMAL				
		2 PLC: ± .12				
		3 PLC: ± .030				
NONE	✓	ANGLE: ± 1°		DWG NO.  114093		
THIRD ANGLE PROJECTION	DES. ENG APPROVED	RICE LAKE WEIGHING SYSTEMS			114093	
	MFG. ENG APPROVED	DR BY JFC 4/7/08			SHEET 1 OF 1	SCALE - REV B