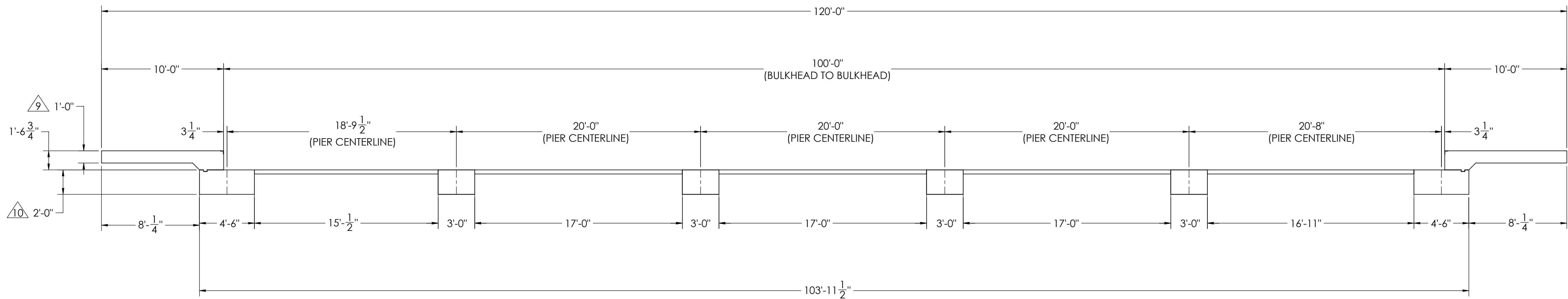
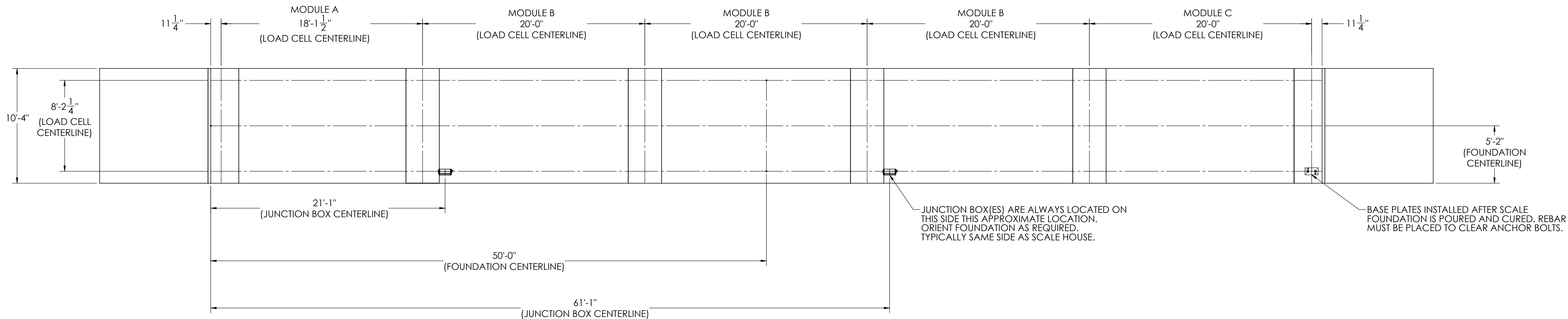


DETAILS

REVISION				
REV.	ECO	DESCRIPTION	INIT	DATE
A		ENGINEERING RELEASE	SPJ	11/22/2016







NOTES:

- 1) CONCRETE: f'c = 3000 PSI @ 28 DAYS.
- 2) REINFORCING STEEL: DEFORMED BARS ASTM A615 GRADE 60.
- 3) STATE AND LOCAL AGENCIES MAY HAVE VARIOUS REQUIREMENTS FOR APPROACH RAMP LENGTH, PITCH, AND FOR CLEAN OUT HEIGHT. PLEASE CHECK WITH ALL AGENCIES PRIOR TO CONSTRUCTION.
- 4) MONOLITHIC POUR IS ALLOWED AT CONTRACTOR'S DISCRETION.
- 5) DEVELOP AND MAINTAIN SITE GRADES WHICH WILL RAPIDLY DRAIN SURFACE AND ROOF RUN-OFF AWAY FROM FOUNDATION.
- 6) FOOTINGS HAVE BEEN DESIGNED FOR A MINIMUM SOIL PRESSURE OF 2500 PSF. IT WILL BE THE RESPONSIBILITY OF OTHERS TO VERIFY THIS VALUE.
- 7) WHERE REINFORCING BARS ARE SHOWN CONTINUOUS, LAP SPLICE BARS 40 DIAMETERS.
- 8) APPROACHES TO BE A COMMON PLANE WITHIN 1/4".

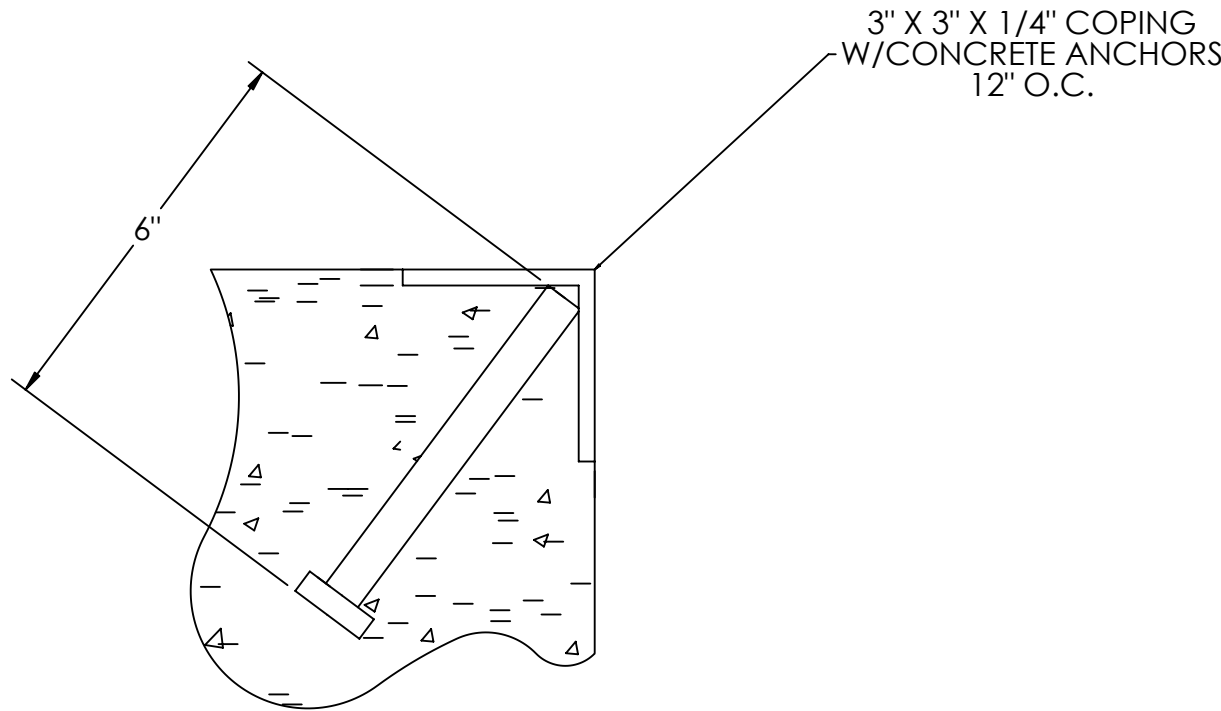
9 APPROACH THICKNESS MAY BE 10" MINIMUM WHERE ALLOWED BY STATE REGULATIONS

10 FOUNDATION MUST EXTEND A MINIMUM OF 12" BELOW THE FROST PENETRATION LINE

(ISSUE) RT DATE S. JOHNSON 02/24/2017		DRAWN BY DATE S. JOHNSON 02/24/2017		REVISION DATE S. JOHNSON 02/27/2017			
(TREATMENT) NONE		THIS DRAWING AND INFORMATION CONTAINED HEREIN IS THE PROPERTY OF RICE LAKE WEIGHING SYSTEMS INC. HEREINAFTER REFERRED TO AS R.W.S. IT MAY BE USED ONLY FOR R.W.S. PROPOSALS AND ITS CUSTOMER'S ORDER. IT SHALL NOT BE DISCLOSED OR COPIED WITHOUT R.W.S. SPECIFIC WRITTEN CONSENT AND SHALL BE IMMEDIATELY RETURNED UPON REQUEST.		UNLESS OTHERWISE SPECIFIED UNITS TO BE INCHES. ALL TOLERANCES TO BE CLASS 2 ALL DIMENSIONS APPLICABLE AFTER TREATMENT			
(NUMBER OF CRANES) 		TOLERANCES DO NOT SCALE DRAWING SURFACE FINISH ✓ ANGLE: ±		FOUNDATION, CONCRETE PIER 100' x 10' OTR SERIES TRUCK SCALE		(SCALE) 1:60 (SHEET) 1 OF 3 (MATERIAL)	
(MINIMUM CRANE CAPACITY) 		(DRAWING TOLERANCES) UNLESS OTHERWISE SPECIFIED .XX: ± .XXX: ± .XXX: ±		(THIRD ANGLE PROJECTION)		(REV) 180021 A	
(ESTIMATED WEIGHT (POUNDS))							

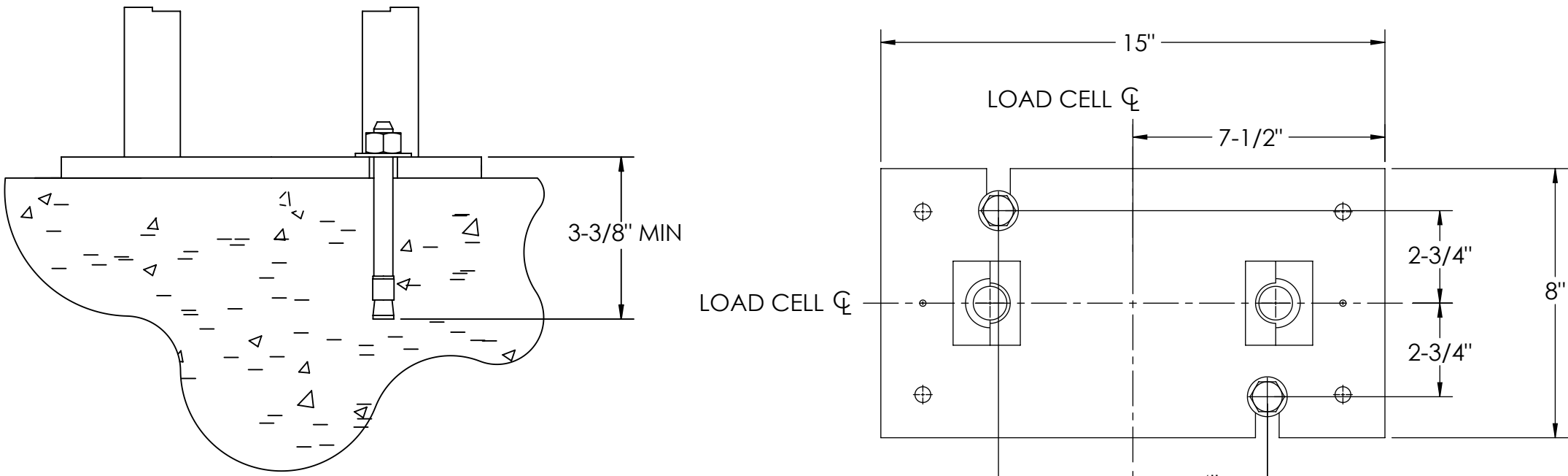
CONCRETE SCHEDULE			
		VOLUME (CUBIC YARDS)	
APPROACHES		8.7	
CLEANOUT		1.6	
PIERS		16.1	
TOTAL		26.4	
MISC. STEEL			
PIT COPING	3 X 3 X 1/4	21 LN. FT	103 LBS

VOLUME SHOWN FOR STATED PIER DEPTH.
ADD ADDITIONAL CONCRETE FOR
DEEPER PIERS AS NEEDED.

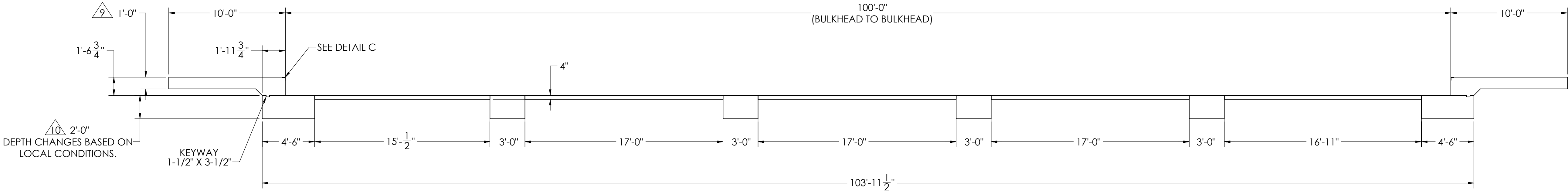
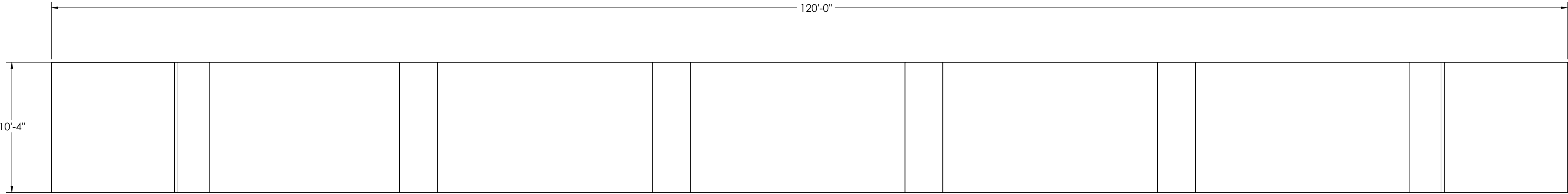





DETAIL C

CONCRETE LAYOUT

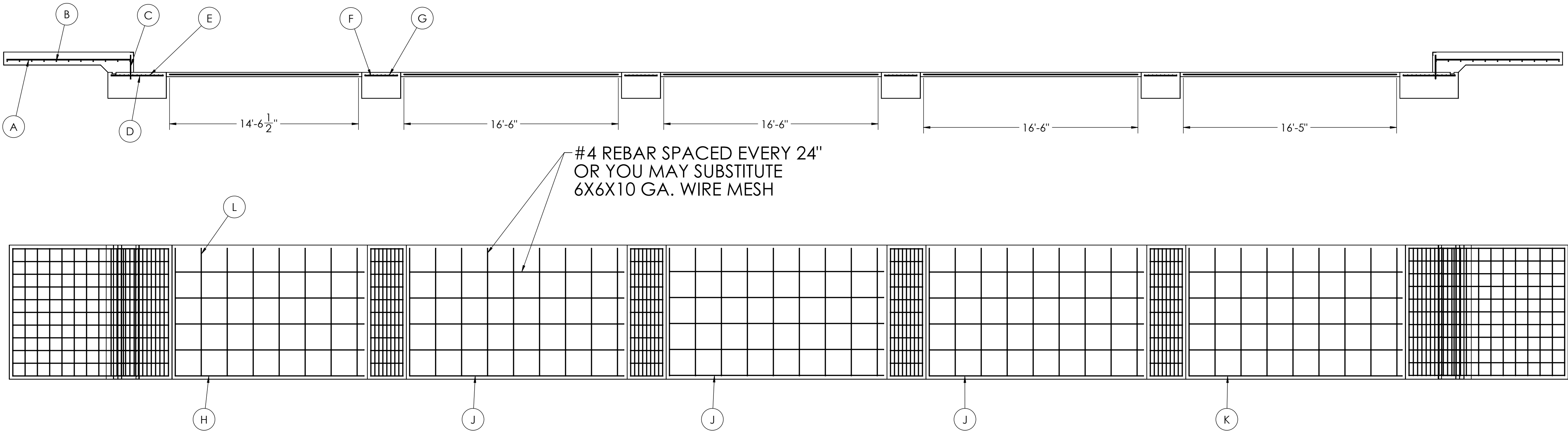


DETAIL D



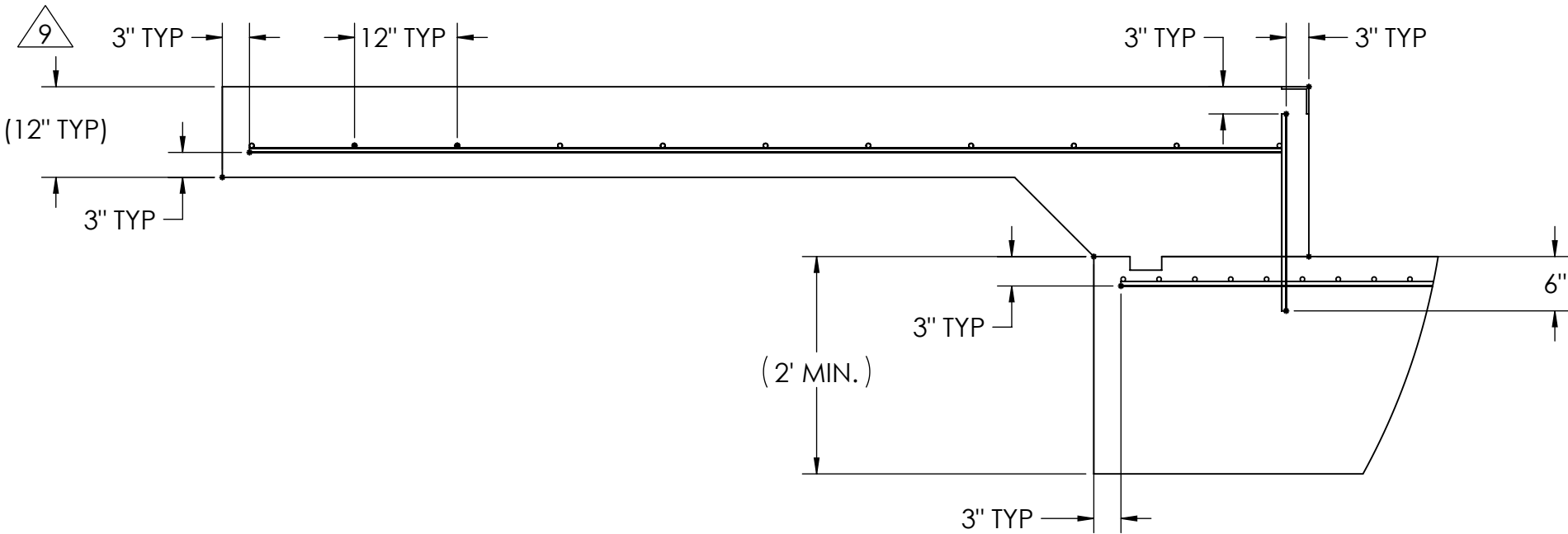
DESIGNED BY DATE S. JOHNSON 02/24/2017		DRAWN BY DATE S. JOHNSON 02/24/2017		PIER APPROVAL DATE S. JOHNSON 03/27/2017		<div></div>	
TREATMENT NONE		THIS DRAWING AND INFORMATION CONTAINED HEREIN IS AND REMAINS THE PROPERTY OF RICE LAKE WEIGHING SYSTEMS INC. HEREINAFTER REFERRED TO AS RLWS. IT MAY BE USED ONLY FOR RLWS' PROPOSAL AND/OR ITS CUSTOMER'S ORDERS. IT SHALL NOT BE DISCLOSED OR COPIED WITHOUT RLWS SPECIFIC WRITTEN CONSENT AND SHALL BE IMMEDIATELY RETURNED UPON REQUEST.		UNLESS OTHERWISE SPECIFIED UNITS TO BE INCHES ALL THREADS TO BE CLASS 2 ALL DIMENSIONS APPLICABLE AFTER TREATMENT			
NUMBER OF CRANES: MINIMUM CRANE CAPACITY: ESTIMATED WEIGHT (POUNDS):		<div></div> <div>DO NOT SCALE DRAWING SURFACE FINISH ✓</div>		TOLERANCES DRAWING TOLERANCES UNLESS OTHERWISE SPECIFIED .XX; .XXX; ANGLE:		DESCRIPTION <div>FOUNDATION, CONCRETE PIER 100' X 10'</div> <div>OTR SERIES TRUCK SCALE</div>	
				SCALE 1:60		SHEET 2 OF 3	
				<div></div> THIRD ANGLE PROJECTION		MATERIAL 180021	
				FPM		REV A	

MATERIAL REQUIRMENTS				
REBAR SCHEDULE				
BAL. NO.	QUANTITY	LENGTH (FT-IN.)	DESCRIPTION	WEIGHT
A	11	9' 6"	# 4 @ 12 O.C.	70
B	11	9' 6"	# 4 @ 12 O.C.	70
C	11	1' 9 3/4"	# 4 @ 12 O.C.	13
D	22	4' 0"	# 4 @ 12 O.C.	59
E	26	9' 6"	# 4 @ 4 O.C.	165
F	44	2' 6"	# 4 @ 12 O.C.	73
G	36	9' 6"	# 4 @ 4 O.C.	228
CLEANOUT SCHEDULE				
H	5	14' 6 1/2"	# 4 @ 24 O.C.	49
J	15	16' 6"	# 4 @ 24 O.C.	165
K	5	16' 5"	# 4 @ 24 O.C.	55
L	44	9' 10"	# 4 @ 24 O.C.	289
TOTAL WEIGHT OF REBAR (LBS.)				1236
TOTAL LENGTH OF REBAR (FT.)				1851
WIRE MESH	6 X 6-10 GA.			830 SQ FT

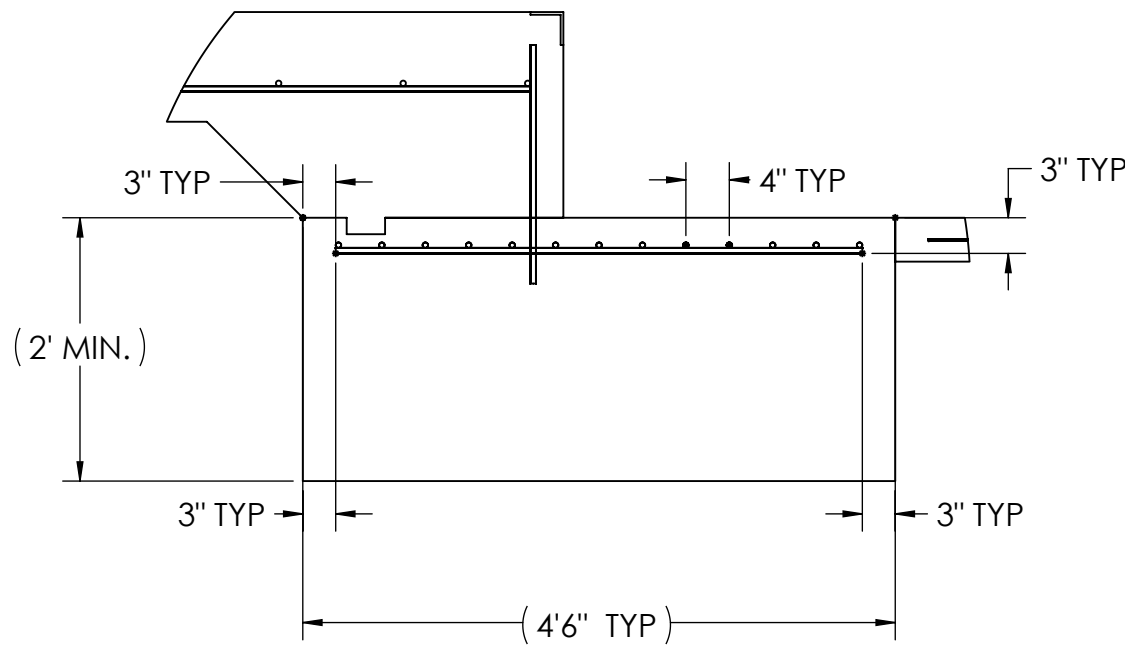


APPROACH STANDARD VIEWS

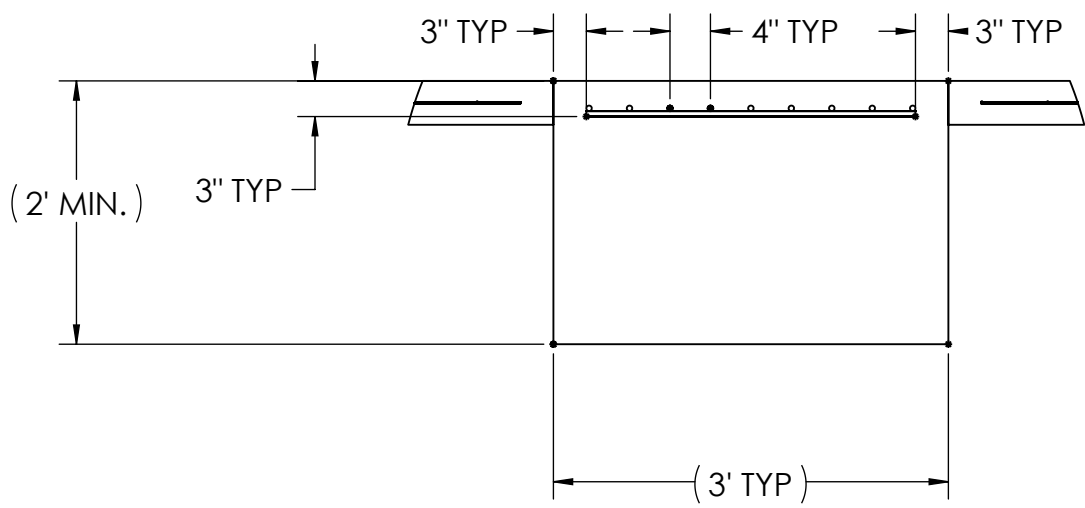
NOTES: LEFT AND RIGHT APPROACHES ARE MIRROR IMAGES OF EACH OTHER AND CONTAIN AN IDENTICAL PART LIST



APPROACH PIER STANDARD VIEWS



PIER STANDARD VIEWS



DESIGNED BY: S.JOHNSON 02/24/2017	DESIGNED BY: S.JOHNSON 02/24/2017	PIER APPROVAL: S.JOHNSON 03/27/2017	RICE LAKE WEIGHING SYSTEMS	
TREATMENT: NONE	THIS DRAWING AND INFORMATION CONTAINED HEREIN IS AND REMAINS THE PROPERTY OF RICE LAKE WEIGHING SYSTEMS INC. - HEREINAFTER REFERRED TO AS RLWS. IT MAY BE USED ONLY FOR RLWS' PROPOSAL AND/OR ITS CUSTOMER'S ORDERS. IT SHALL NOT BE DISCLOSED OR COPIED WITHOUT RLWS SPECIFIC WRITTEN CONSENT AND SHALL BE IMMEDIATELY RETURNED UPON REQUEST.	UNLESS OTHERWISE SPECIFIED UNITS TO BE INCHES ALL THREADS TO BE CLASS 2 ALL DIMENSIONS APPLICABLE AFTER TREATMENT	DESCRIPTION: FOUNDATION, CONCRETE PIER 100' X 10' OTR SERIES TRUCK SCALE	
NUMBER OF CRANES: 1	DO NOT SCALE DRAWING SURFACE FINISH	TOLERANCES UNLESS OTHERWISE SPECIFIED .XX: ± .XXX: ± ANGLE: ±	SCALE: 1:48 SHEET: 3 OF 3 MATERIAL:	REV: A
ESTIMATED WEIGHT (POUNDS):		THIRD ANGLE PROJECTION	180021	