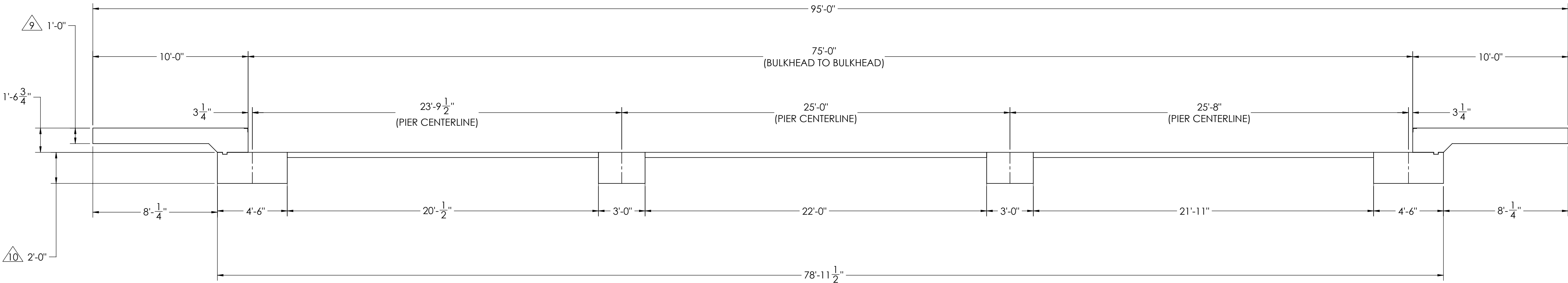
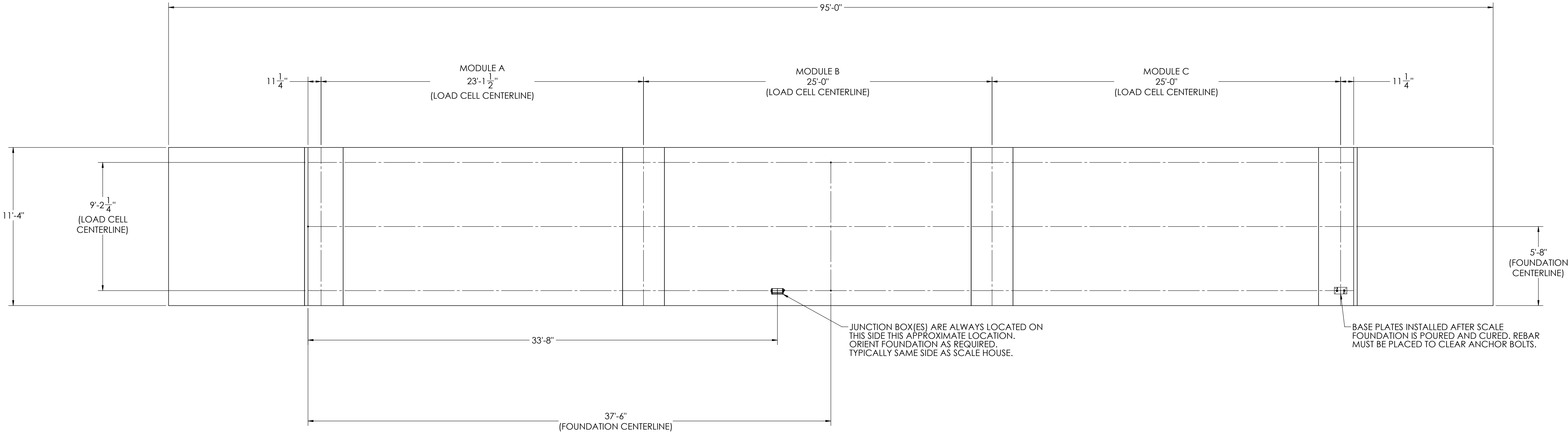


DETAILS


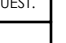

REV.		ECO	REVISION		INIT	DATE
A			ENGINEERING RELEASE		SPJ	03/11/2018



NOTES:

- 1) CONCRETE: f_c = 3000 PSI @ 28 DAYS.
- 2) REINFORCING STEEL: DEFORMED BARS ASTM A615 GRADE 60.
- 3) STATE AND LOCAL AGENCIES MAY HAVE VARIOUS REQUIREMENTS FOR APPROACH RAMP LENGTH, PITCH, AND FOR CLEAN OUT HEIGHT. PLEASE CHECK WITH ALL AGENCIES PRIOR TO CONSTRUCTION.
- 4) MONOLITHIC POUR IS ALLOWED AT CONTRACTOR'S DISCRETION.
- 5) DEVELOP AND MAINTAIN SITE GRADES WHICH WILL RAPIDLY DRAIN SURFACE AND ROOF RUN-OFF AWAY FROM FOUNDATION.
- 6) FOOTINGS HAVE BEEN DESIGNED FOR A MINIMUM SOIL PRESSURE OF 2500 PSF, IT WILL BE THE RESPONSIBILITY OF OTHERS TO VERIFY THIS VALUE.
- 7) WHERE REINFORCING BARS ARE SHOWN CONTINUOUS, LAP SPICE BARS 40 DIAMETERS.
- 8) APPROACHES TO BE A COMMON PLANE WITHIN 1/4".

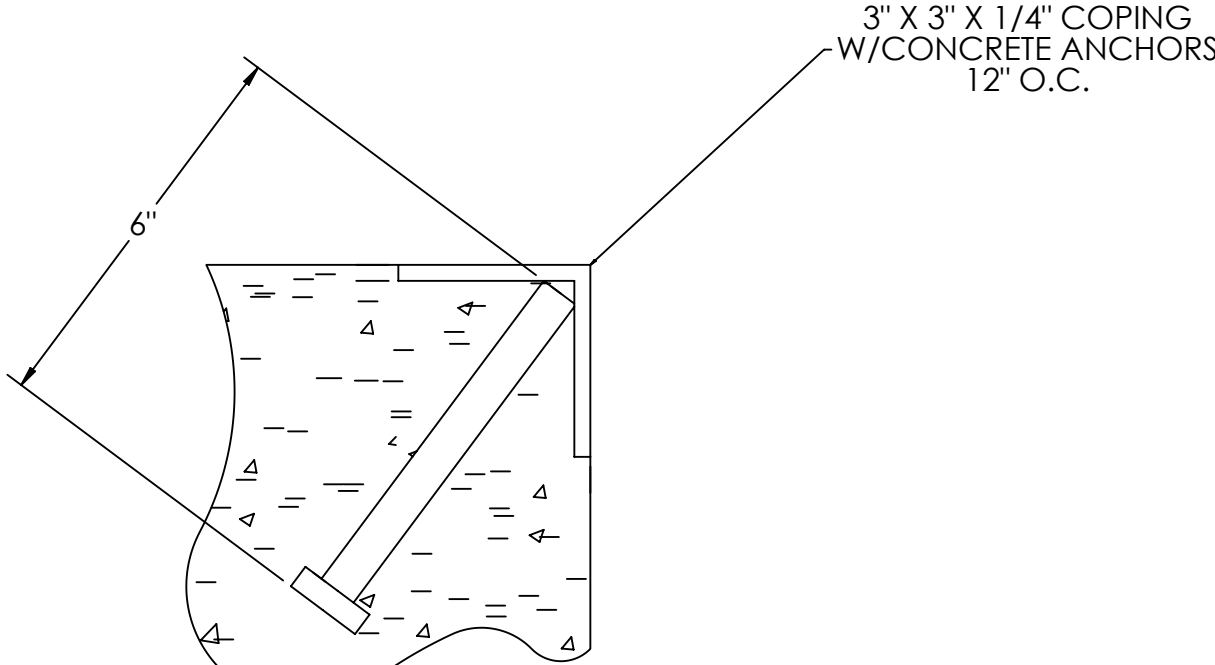
- △ APPROACH THICKNESS MAY BE 10" MINIMUM WHERE ALLOWED BY STATE REGULATIONS
- △ FOUNDATION MUST EXTEND A MINIMUM OF 12" BELOW THE FROST PENETRATION LINE

DESIGNED BY DATE S. JOHNSON 03/12/2019		DRAWN BY DATE S. JOHNSON 03/12/2019		PIER APPROVAL DATE S. JOHNSON 03/14/2019		<div><div></div><div>RICE LAKE</div><div>WEIGHING SYSTEMS</div></div>
TREATMENT NONE		THIS DRAWING AND INFORMATION CONTAINED HEREIN IS AND REMAINS THE PROPERTY OF RICE LAKE WEIGHING SYSTEMS INC. - HEREINAFTER REFERRED TO AS RLWS. IT MAY BE USED ONLY FOR RLWS' PROPOSAL AND/OR ITS CUSTOMER'S ORDERS. IT SHALL NOT BE DISCLOSED OR COPIED WITHOUT RLWS' SPECIFIC WRITTEN CONSENT AND SHALL BE IMMEDIATELY RETURNED UPON REQUEST.		UNLESS OTHERWISE SPECIFIED UNITS TO BE INCHES ALL THREADS TO BE CLASS 2 ALL DIMENSIONS APPLICABLE AFTER TREATMENT		
NUMBER OF CRANES: MINIMUM CRANE CAPACITY: ESTIMATED WEIGHT (POUNDS):		TOLERANCES DRAWING TOLERANCES UNLESS OTHERWISE SPECIFIED SURFACE FINISH DO NOT SCALE XXX: ± XXX: ± ANGLE: ±		FOUNDATION, CONCRETE PIER 75' X 11' OTR SERIES TRUCK SCALE		
				SCALE: 1:45 SHEET 1 OF 3 MATERIAL  180184 REV A		

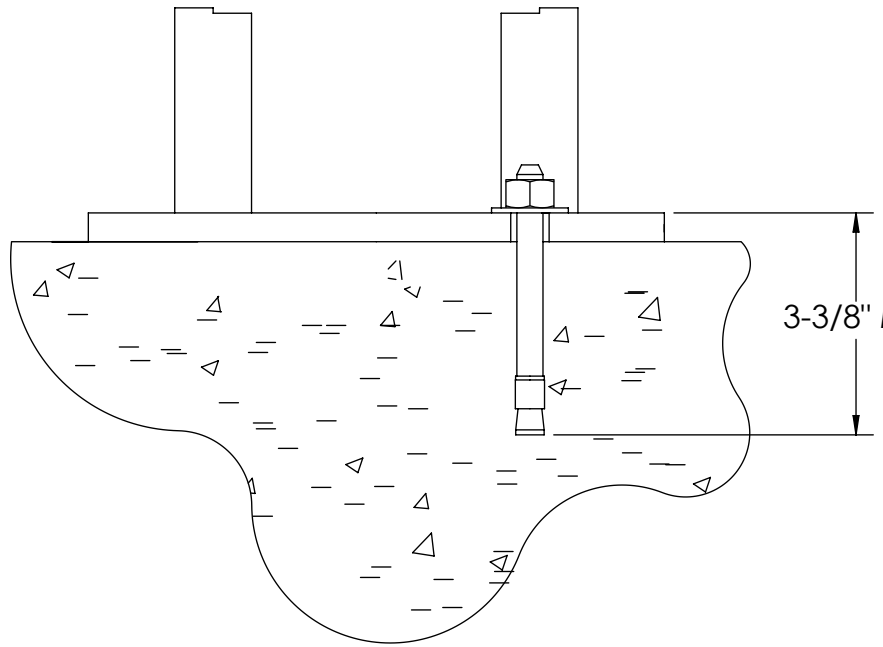
CONCRETE SCHEDULE			
		VOLUME (CUBIC YARDS)	
APPROACHES		9.5	
CLEANOUT		9.0	
PIERS		12.4	
TOTAL		30.8	
MISC. STEEL			
PIT COPING	3 X 3 X 1/4	23 LN. FT	113 LBS

VOLUME SHOWN FOR STATED PIER DEPTH.
ADD ADDITIONAL CONCRETE FOR
DEEPER PIERS AS NEEDED.

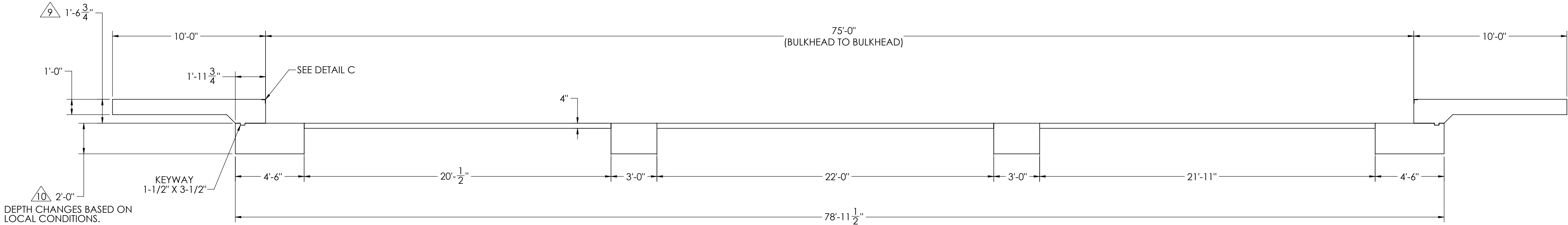
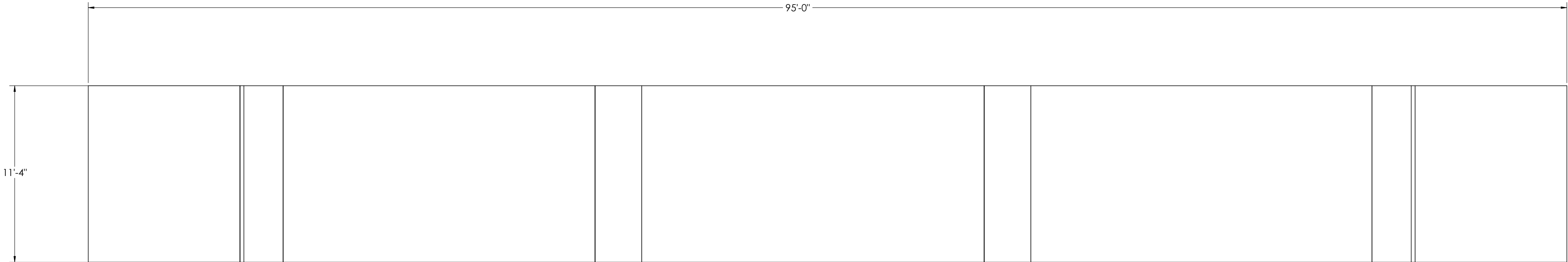
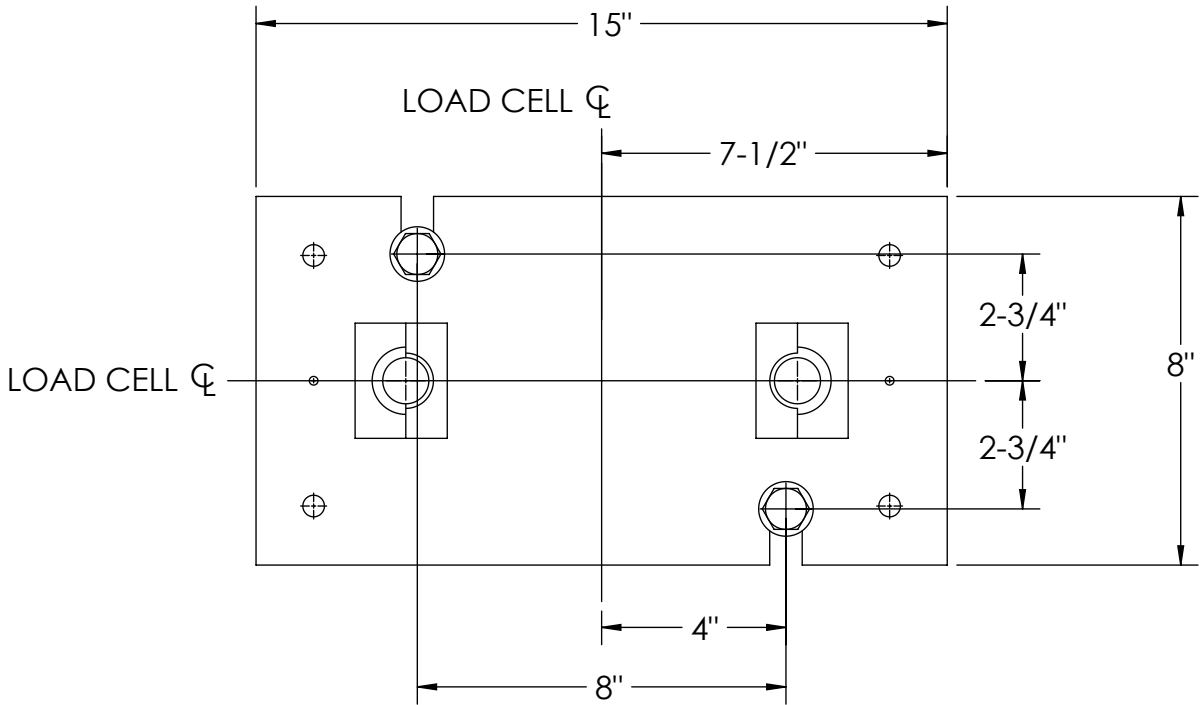
CONCRETE LAYOUT



DETAIL C



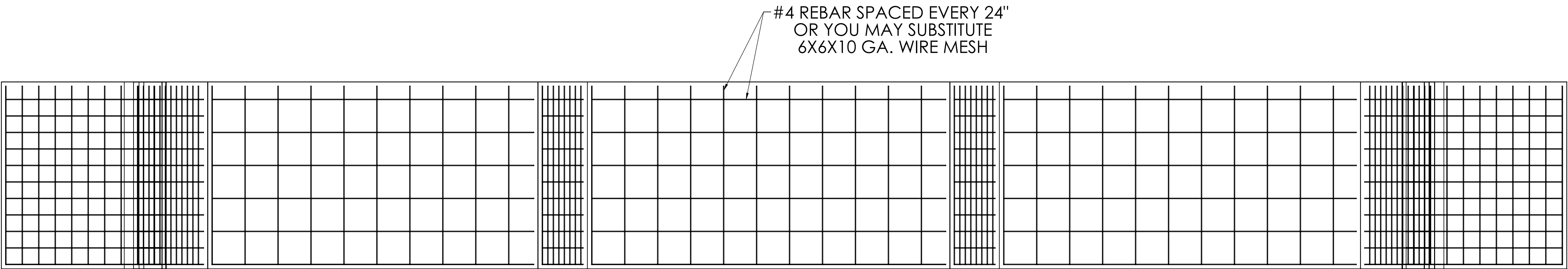
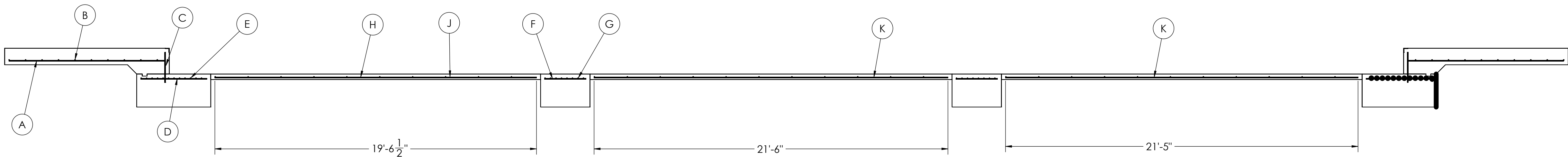
DETAIL D



DESIGNED BY: J. JOHNSON S. JOHNSON 03/12/2019	DRAWN BY: J. JOHNSON S. JOHNSON 03/12/2019	PIER APPROVAL DATE: S. JOHNSON 03/14/2019	RICE LAKE WEIGHING SYSTEMS	
TREATMENT NONE	THIS DRAWING AND INFORMATION CONTAINED HEREIN IS AND REMAINS THE PROPERTY OF RICE LAKE WEIGHING SYSTEMS INC. - HEREINAFTER REFERRED TO AS RLWS. IT MAY BE USED ONLY FOR RLWS' PROPOSAL AND/OR ITS CUSTOMER'S ORDERS. IT SHALL NOT BE DISCLOSED OR COPIED WITHOUT RLWS' SPECIFIC WRITTEN CONSENT AND SHALL BE IMMEDIATELY RETURNED UPON REQUEST.		UNLESS OTHERWISE SPECIFIED UNITS TO BE INCHES ALL THREADS TO BE CLASS 2 ALL DIMENSIONS APPLICABLE AFTER TREATMENT	
NUMBER OF CRANES: MINIMUM CRANE CAPACITY: ESTIMATED WEIGHT (POUNDS)	DO NOT SCALE DRAWING SURFACE FINISH ✓	TOLERANCES DRAWINGS TOLERANCES UNLESS OTHERWISE SPECIFIED .XX: .XXX: ANGLE:	SCALE: 1:45 SHEET: 2 OF 3 THIRD ANGLE PROJECTION:	DESCRIPTION: FOUNDATION, CONCRETE PIER 75' X 11' OTR SERIES TRUCK SCALE MATERIAL: 180184 REV: A

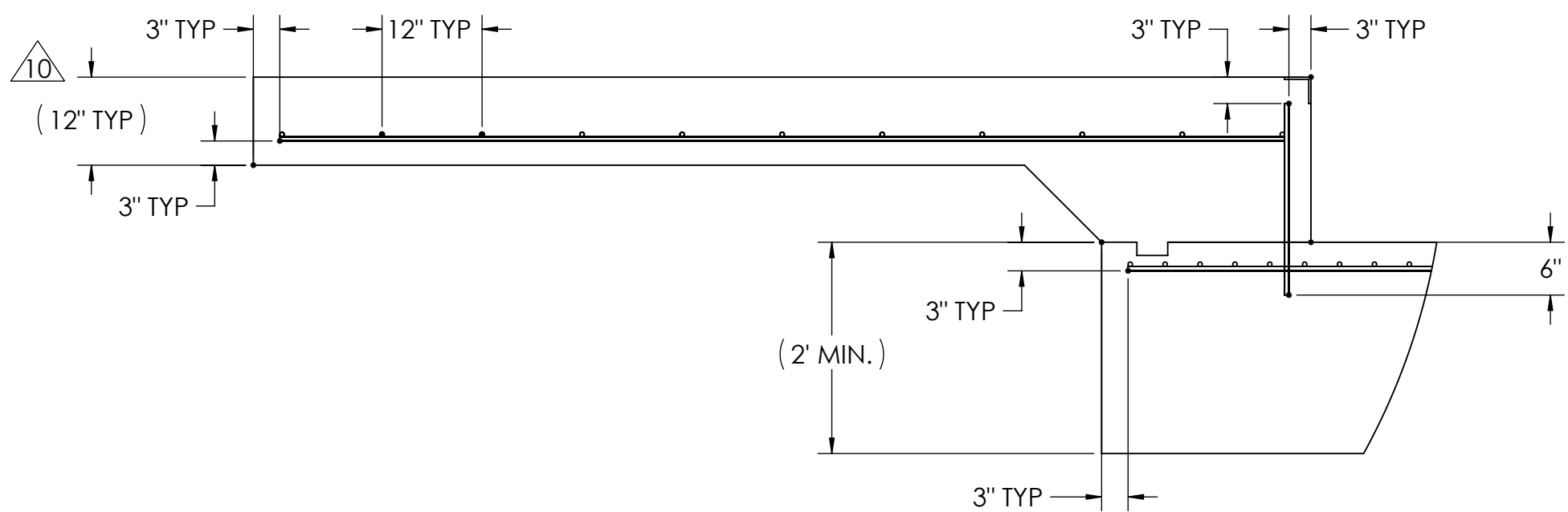
MATERIAL REQUIREMENTS				
REBAR SCHEDULE				
BAL. NO.	QUANTITY	LENGTH (FT-IN.)	DESCRIPTION	WEIGHT
A	24	9' 4"	# 4 @ 12 O.C.	150
B	22	10' 10"	# 4 @ 12 O.C.	159
C	24	1' 9 3/4"	# 4 @ 12 O.C.	29
D	24	4' 0"	# 4 @ 12 O.C.	64
E	24	10' 10"	# 4 @ 4 O.C.	174
F	24	2' 6"	# 4 @ 12 O.C.	40
G	18	10' 10"	# 4 @ 4 O.C.	130
CLEANOUT SCHEDULE				
H	6	19' 6 1/2"	# 4 @ 24 O.C.	78
J	6	21' 6"	# 4 @ 24 O.C.	86
K	6	21' 5"	# 4 @ 24 O.C.	86
L	32	10' 10"	# 4 @ 24 O.C.	232
TOTAL WEIGHT OF REBAR (LBS.)				1228
TOTAL LENGTH OF REBAR (FT.)				1838
WIRE MESH		6 X 6-10 GA.		725 SQ FT

REBAR LAYOUT

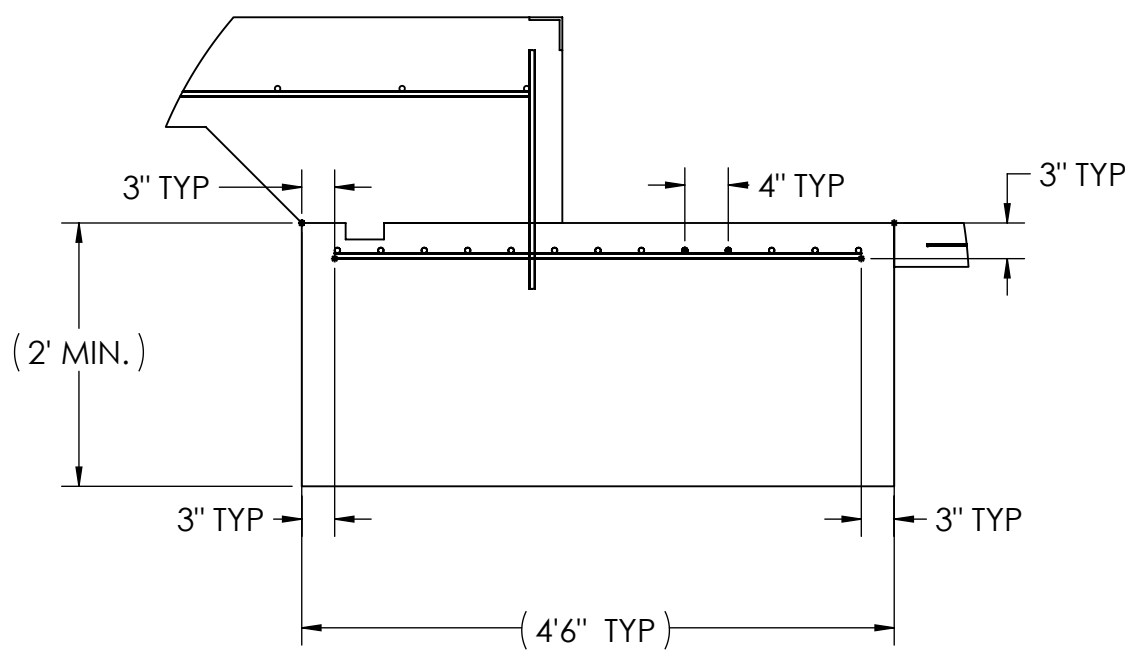


APPROACH STANDARD VIEWS

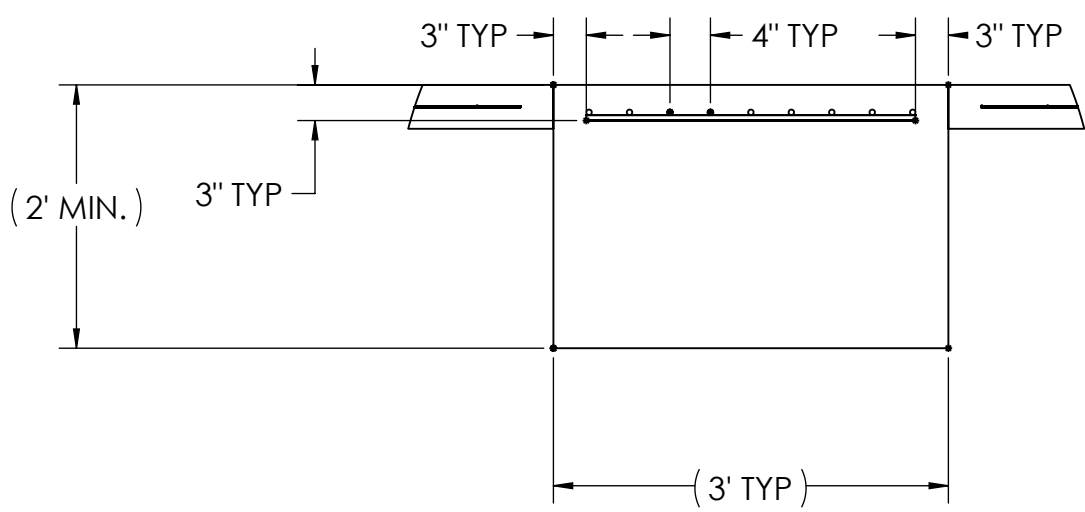
NOTES: 1) LEFT AND RIGHT APPROACHES ARE MIRROR IMAGES OF EACH OTHER AND CONTAIN AN IDENTICAL PART LIST


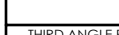


APPROACH PIER STANDARD VIEWS



PIER STANDARD VIEWS



DESIGNED BY DATE S. JOHNSON 03/12/2019		DRAWN BY DATE S. JOHNSON 03/12/2019		FIELD ERECTING DATE S. JOHNSON 03/14/2019			
TREATMENT NONE		THIS DRAWING AND INFORMATION CONTAINED HEREIN IS AND REMAINS THE PROPERTY OF RICE LAKE WEIGHING SYSTEMS INC. HEREINAFTER ALL RIGHTS ARE RESERVED TO BE CLASS 2 ALL DIMENSIONS APPLICABLE AFTER TREATMENT		UNLESS OTHERWISE SPECIFIED ALL THINGS TO BE CLASS 2 ALL DIMENSIONS APPLICABLE AFTER TREATMENT			
NUMBER OF CRANES MINIMUM CRANE CAPACITY (ESTIMATED WEIGHT POINTS)		TOLERANCES DRAWING TOLERANCES UNLESS OTHERWISE SPECIFIED .XX; ± .XXX; ± ✓ ANGLE: ±		DESCRIPTION FOUNDATION, CONCRETE PIER 75' x 11' OTR SERIES TRUCK SCALE		SCALE 1:48 SHEET 3 OF 3 MATERIAL BEND ANGLE PROJECTION  P/N 180184 REV A	