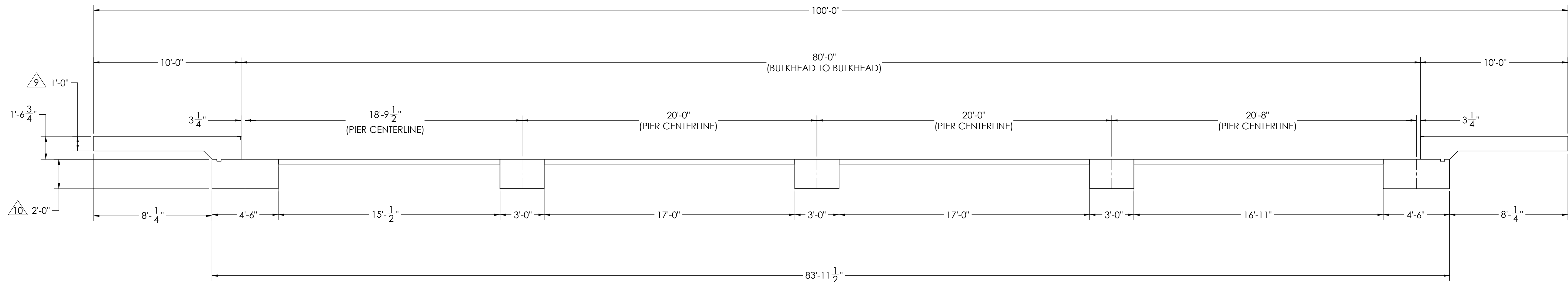
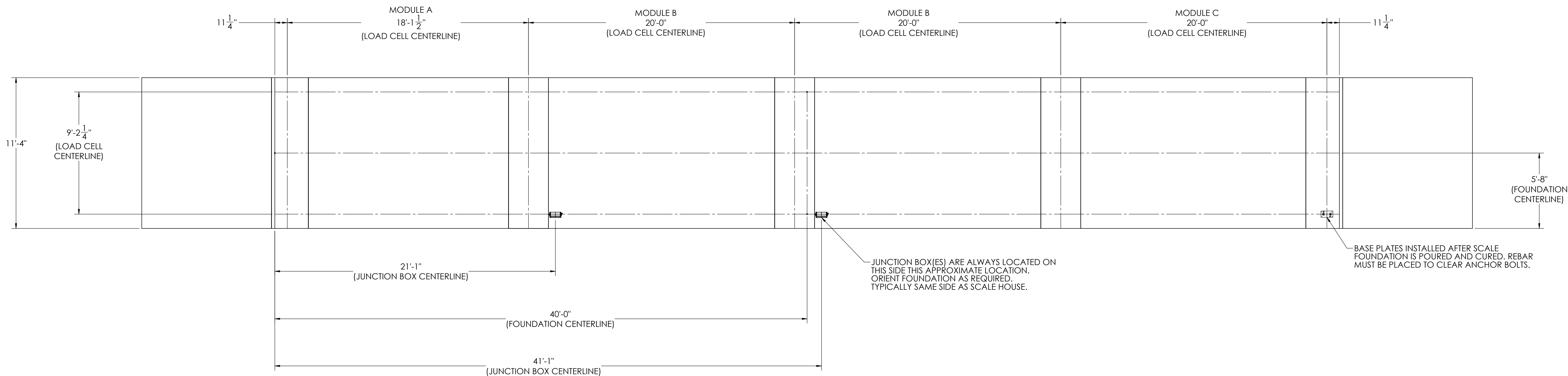


DETAILS

REVISION				
REV.	ECO	DESCRIPTION	INIT	DATE
A		ENGINEERING RELEASE	SPJ	02/24/2017







NOTES:

- 1) CONCRETE: F_C = 3000 PSI @ 28 DAYS.
- 2) REINFORCING STEEL: DEFORMED BARS ASTM A615 GRADE 60.
- 3) STATE AND LOCAL AGENCIES MAY HAVE VARIOUS REQUIREMENTS FOR APPROACH RAMP LENGTH, PITCH, AND FOR CLEAN OUT HEIGHT. PLEASE CHECK WITH ALL AGENCIES PRIOR TO CONSTRUCTION.
- 4) MONOLITHIC POUR IS ALLOWED AT CONTRACTOR'S DISCRETION.
- 5) DEVELOP AND MAINTAIN SITE GRADES WHICH WILL RAPIDLY DRAIN SURFACE AND ROOF RUN-OFF AWAY FROM FOUNDATION.
- 6) FOOTINGS HAVE BEEN DESIGNED FOR A MINIMUM SOIL PRESSURE OF 2500 PSF. IT WILL BE THE RESPONSIBILITY OF OTHERS TO VERIFY THIS VALUE.
- 7) WHERE REINFORCING BARS ARE SHOWN CONTINUOUS, LAP SPLICE BARS 40 DIAMETERS
- 8) APPROACHES TO BE A COMMON PLANE WITHIN 1/4".

9. APPROACH THICKNESS MAY BE 10" MINIMUM WHERE ALLOWED BY STATE REGULATIONS.

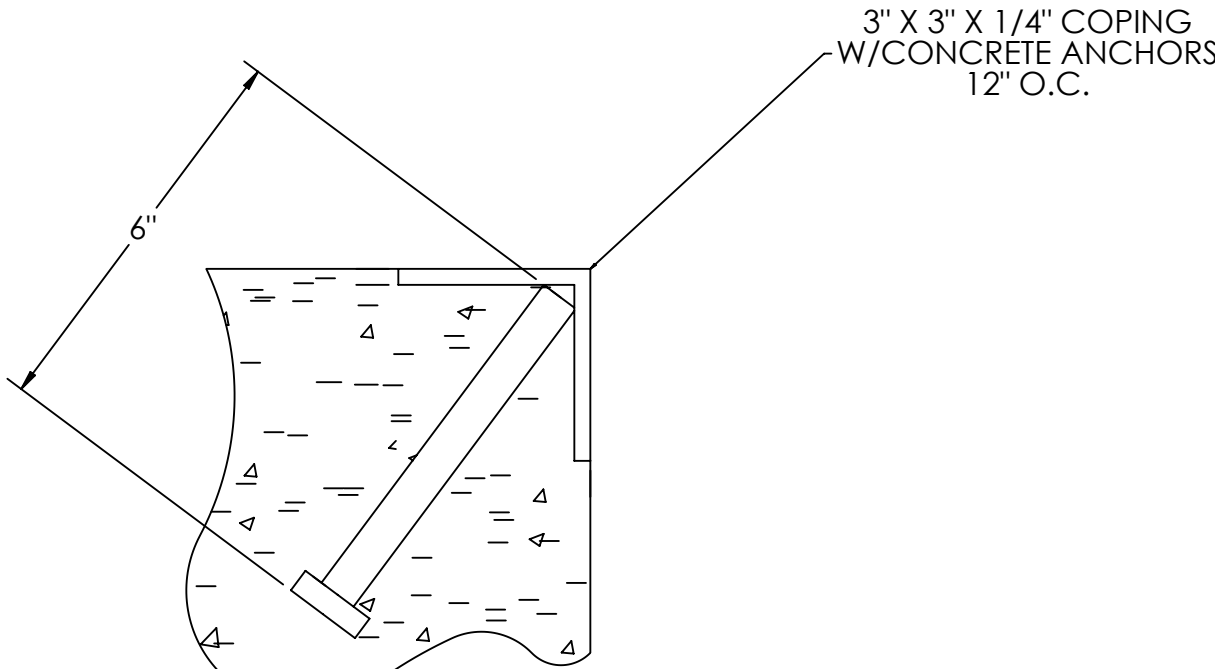
10. FOUNDATION MUST EXTEND A MINIMUM OF 12" BELOW THE FROST PENETRATION LINE

(ISSUED BY DATE) S. JOHNSON <u>02/24/2017</u>		(DRAWN BY DATE) S. JOHNSON <u>02/24/2017</u>		(FIELD PREPARED DATE) S. JOHNSON <u>03/27/2017</u>			
(TREATMENT) NONE		THIS DRAWING AND INFORMATION CONTAINED HEREIN IS AND REMAINS THE PROPERTY OF RICE LAKE WEIGHING SYSTEMS, INC. HEREINAFTER REFERRED TO AS RICE LAKE. IT IS TO BE USED FOR RICE LAKE'S PROPOSAL AND/OR FOR ITS CUSTOMER'S CONSTRUCTION. IT SHALL NOT BE REPRODUCED, COPIED, OR TRANSMITTED IN ANY MANNER WITHOUT RICE'S SPECIFIC WRITTEN CONSENT AND SHALL BE IMMEDIATELY RETURNED UPON REQUEST.		UNLESS OTHERWISE SPECIFIED ALL DIMENSIONS ARE IN INCHES ALL THREADS TO BE CLASS 2 ALL DIMENSIONS APPLICABLE AFTER TREATMENT			
(NUMBER OF CRANES) 		(TOLERANCES) DO NOT SCALE DRAWING TOLERANCES UNLESS OTHERWISE SPECIFIED SURFACE FINISH .XX: ± .XXX: ± ✓ ANGLE: ±		(DESCRIPTION) FOUNDATION, CONCRETE PIER 80' X 11' OTR SERIES TRUCK SCALE		(SCALE) SHEET MATERIAL 1:45 1 OF 3	
(ESTIMATED WEIGHT (POUNDS)) 		THIRD ANGLE PROJECTION 		(REV) 180190		(REV) A	

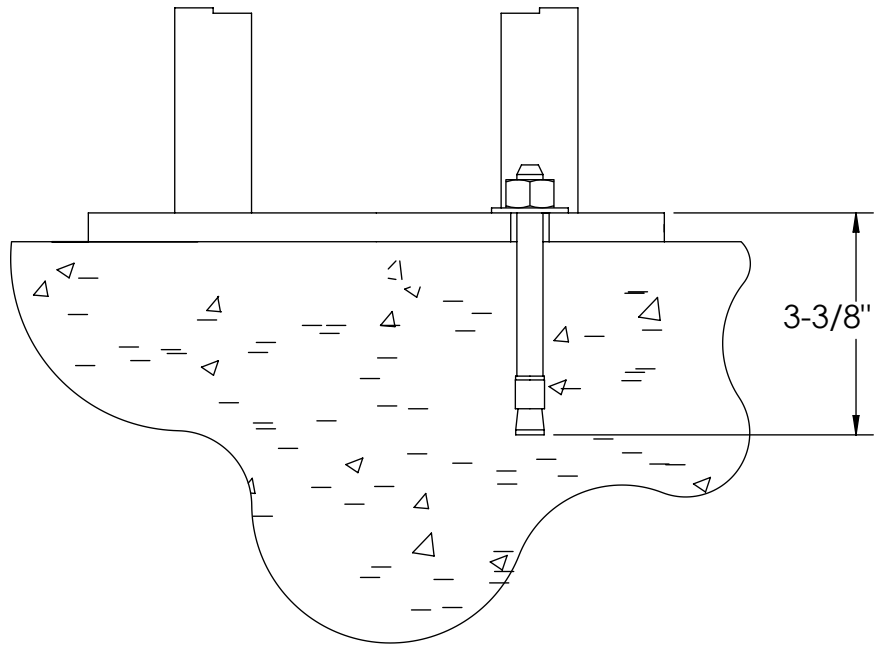
CONCRETE SCHEDULE			
		VOLUME (CUBIC YARDS)	
APPROACHES		9.5	
CLEANOUT		9.2	
PIERS		15.1	
TOTAL		33.8	
MISC. STEEL			
PIT COPING	3 X 3 X 1/4	23 LN .FT	113 LBS

VOLUME SHOWN FOR STATED PIER DEPTH.
ADD ADDITIONAL CONCRETE FOR
DEEPER PIERS AS NEEDED.

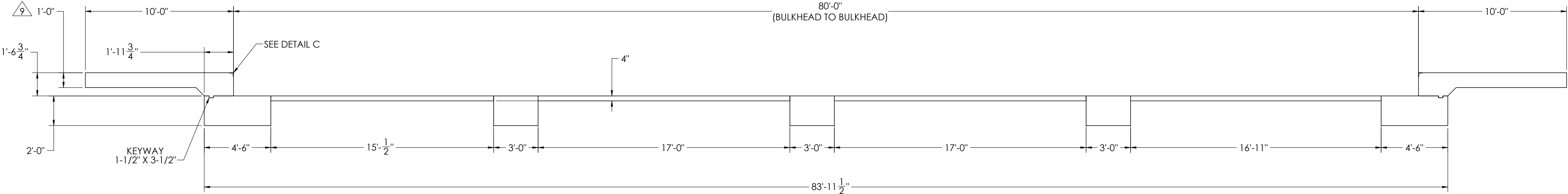
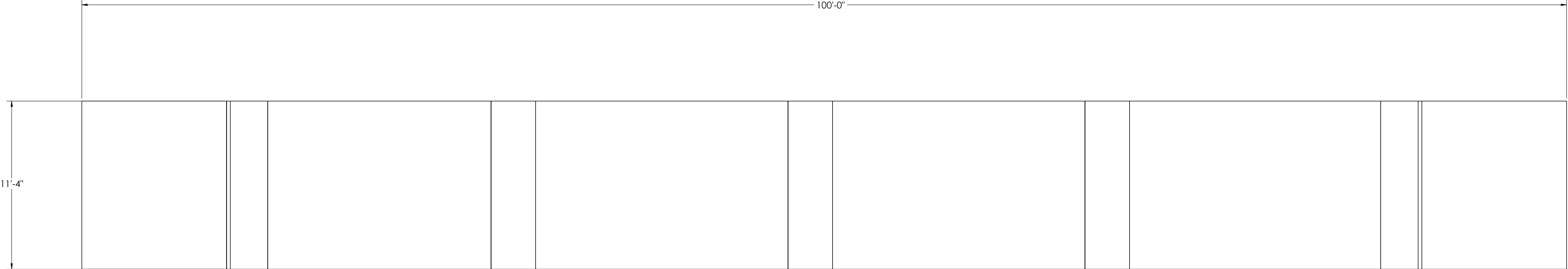
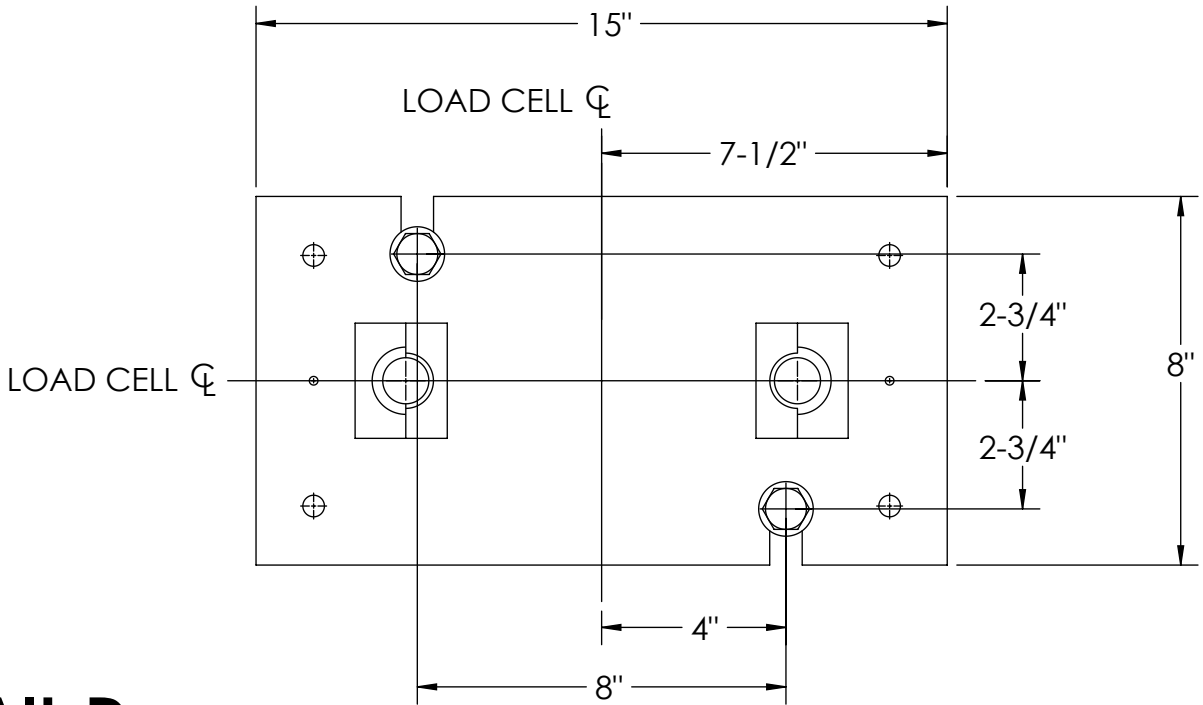
CONCRETE LAYOUT





DETAIL C



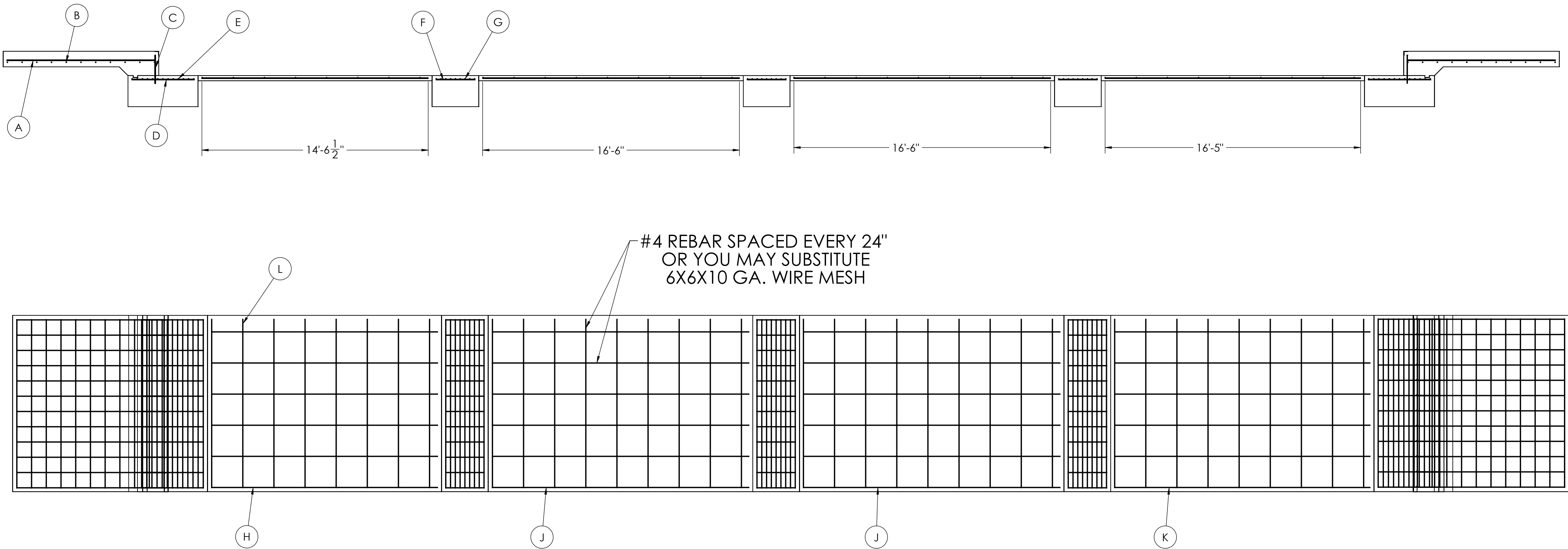
DETAIL D



DESIGNED BY DATE S. JOHNSON 02/24/2017		DRAWN BY DATE S. JOHNSON 02/24/2017		PIER APPROVAL DATE S. JOHNSON 03/27/2017		<div>RICE LAKE WEIGHING SYSTEMS</div>	
TREATMENT NONE		THIS DRAWING AND INFORMATION CONTAINED HEREIN IS AND REMAINS THE PROPERTY OF RICE LAKE WEIGHING SYSTEMS INC. - HEREINAFTER REFERRED TO AS RLWS. IT MAY BE USED ONLY FOR RLWS' PROPOSAL AND/OR ITS CUSTOMER'S ORDERS. IT SHALL NOT BE DISCLOSED OR COPIED WITHOUT RLWS SPECIFIC WRITTEN CONSENT AND SHALL BE IMMEDIATELY RETURNED UPON REQUEST.		UNLESS OTHERWISE SPECIFIED UNITS TO BE INCHES ALL THREADS TO BE CLASS 2 ALL DIMENSIONS APPLICABLE AFTER TREATMENT			
NUMBER OF CRANES: MINIMUM CRANE CAPACITY: ESTIMATED WEIGHT (POUNDS):		<div></div> <div>DO NOT SCALE DRAWING SURFACE FINISH ✓</div>		TOLERANCES DRAWINGS TOLERANCES UNLESS OTHERWISE SPECIFIED .XX: .XXX: ANGLE:		DESCRIPTION FOUNDATION, CONCRETE PIER 80' X 11' OTR SERIES TRUCK SCALE	
				SCALE 1:45		SHEET 2 OF 3	
				THIRD ANGLE PROJECTION 		FPM 180190	
						REV A	

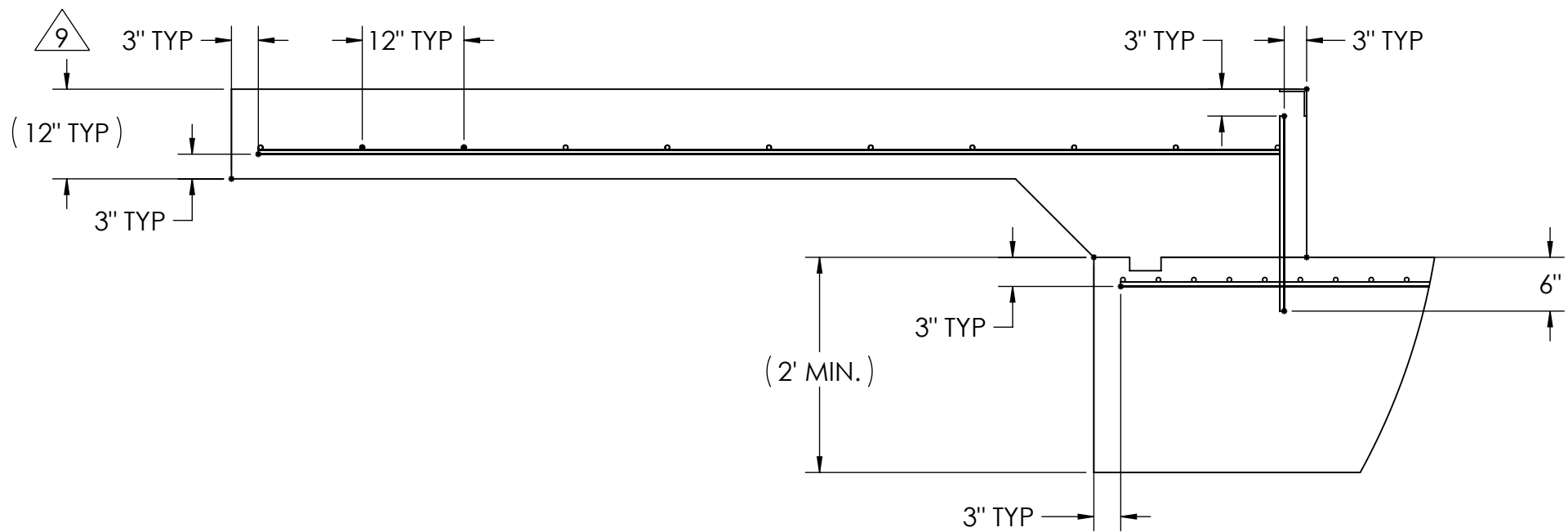
REBAR SCHEDULE				
BAL. NO.	QUANTITY	LENGTH (FT-IN.)	DESCRIPTION	WEIGHT
A	24	9' 6"	# 4 @ 12 O.C.	152
B	22	10' 10"	# 4 @ 12 O.C.	159
C	24	1' 9 3/4"	# 4 @ 12 O.C.	29
D	24	4' 0"	# 4 @ 12 O.C.	64
E	22	10' 10"	# 4 @ 4 O.C.	159
F	39	2' 6"	# 4 @ 12 O.C.	65
G	27	10' 10"	# 4 @ 4 O.C.	195
CLEANOUT SCHEDULE				
H	6	14' 6 1/2"	# 4 @ 24 O.C.	58
J	12	16' 6"	# 4 @ 24 O.C.	132
K	6	16' 5"	# 4 @ 24 O.C.	66
L	35	10' 10"	# 4 @ 24 O.C.	253
TOTAL WEIGHT OF REBAR (LBS.)				1334
TOTAL LENGTH OF REBAR (FT.)				1997
WIRE MESH		6 X 6-10 GA.		747 SQ FT

REBAR LAYOUT

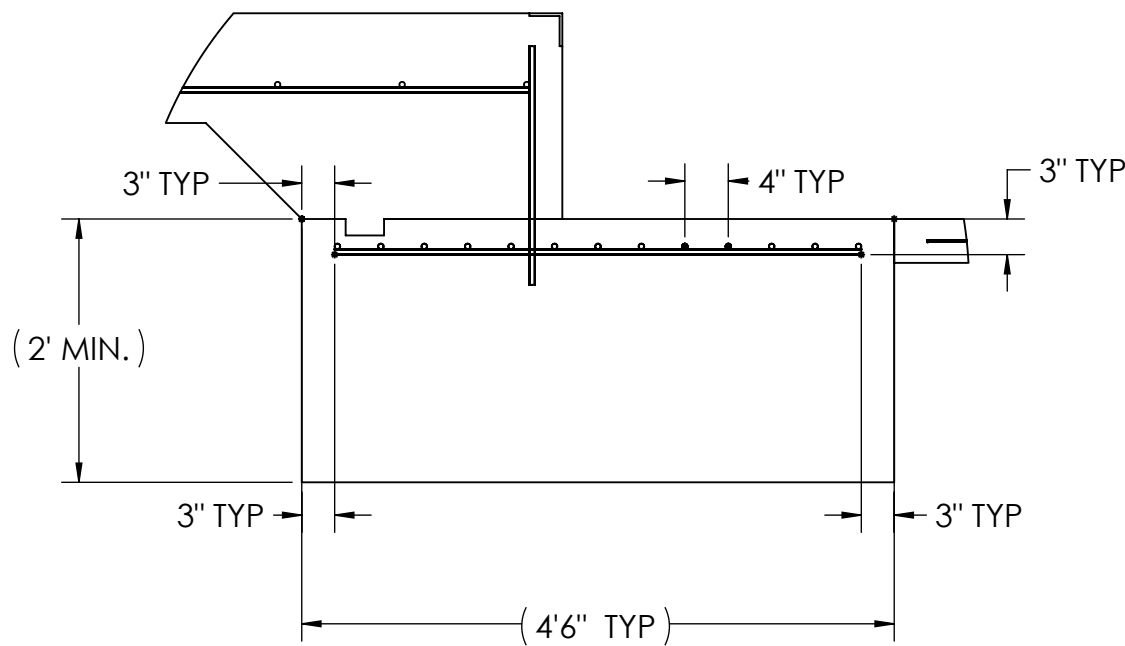


APPROACH STANDARD VIEWS

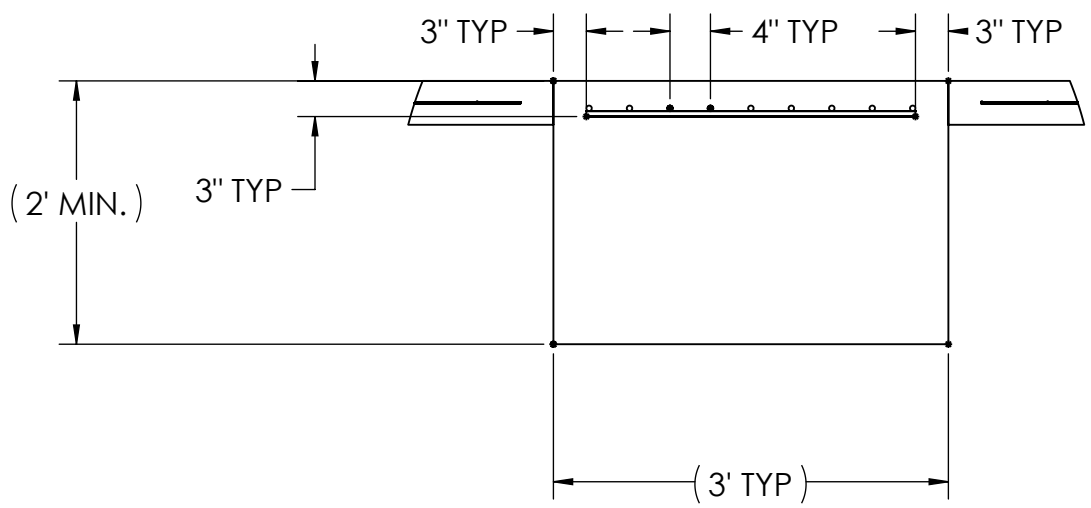
NOTES: 1) LEFT AND RIGHT APPROACHES ARE MIRROR IMAGES OF EACH OTHER AND CONTAIN AN IDENTICAL PART LIST




APPROACH PIER STANDARD VIEWS



PIER STANDARD VIEWS



DESIGNED BY DATE S. JOHNSON 02/24/2017		DRAWN BY DATE S. JOHNSON 02/24/2017		FIELD APPROVAL DATE S. JOHNSON 03/27/2017			
TREATMENT NONE		<p>THIS DRAWING AND INFORMATION CONTAINED HEREIN IS AND REMAINS THE PROPERTY OF RICE LAKE WEIGHING SYSTEMS INC. HEREINAFTER REFERRED TO AS RLS. IT MAY BE USED BY THE USER TO PROPOSE, AND/OR FOR ITS CUSTOMER'S REVIEW, IT SHALL NOT BE REPRODUCED OR COPIED WITHOUT RLS'S SPECIFIC WRITTEN CONSENT AND SHALL BE IMMEDIATELY RETURNED UPON REQUEST.</p>		<p>UNLESS OTHERWISE SPECIFIED ALL DIMENSIONS ARE IN INCHES ALL THREADS TO BE CLASS 2 ALL DIMENSIONS APPLICABLE AFTER TREATMENT</p>			
NUMBER OF CRANES 1		<p>DO NOT SCALE DRAWING SURFACE FINISH XX: ± XXX: ± ✓ ANGLE: ±</p>		<p>DESCRIPTION FOUNDATION, CONCRETE PIER 80' x 11' OTR SERIES TRUCK SCALE</p>		<p>SCALE SHEET 1:48 3 OF 3</p>	
MINIMUM CRANE CAPACITY 150,000 LBS		TOLERANCES DRAWING TOLERANCES UNLESS OTHERWISE SPECIFIED		<p>BERO ANGLE PROJECTION</p>		<p>MATERIAL 180190</p>	
ESTIMATED WEIGHT (POUNDS) 150,000 LBS				<p>REV A</p>			