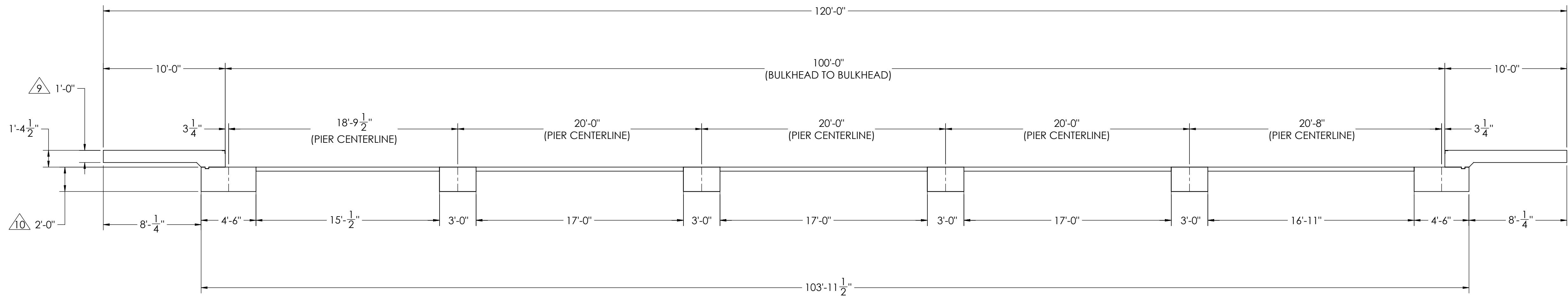
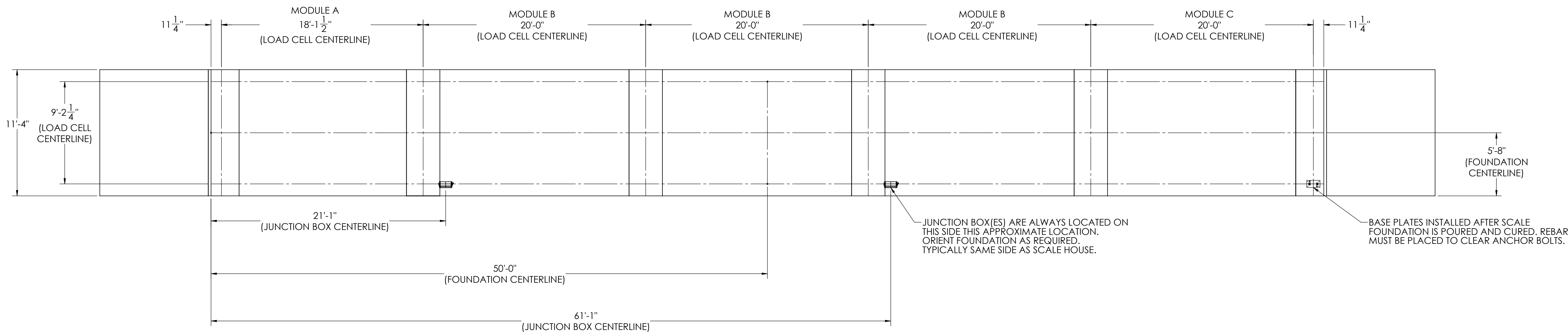


DETAILS

REVISION				
REV.	ECO	DESCRIPTION	INIT	DATE
A		ENGINEERING RELEASE	SPJ	11/22/2016






NOTES:

- 1) CONCRETE: f'c = 3000 PSI @ 28 DAYS.
- 2) REINFORCING STEEL: DEFORMED BARS ASTM A615 GRADE 60.
- 3) STATE AND LOCAL AGENCIES MAY HAVE VARIOUS REQUIREMENTS FOR APPROACH RAMP LENGTH, PITCH, AND FOR CLEAN OUT HEIGHT. PLEASE CHECK WITH ALL AGENCIES PRIOR TO CONSTRUCTION.
- 4) MONOLITHIC POUR IS ALLOWED AT CONTRACTOR'S DISCRETION.
- 5) DEVELOP AND MAINTAIN SITE GRADES WHICH WILL RAPIDLY DRAIN SURFACE AND ROOF RUN-OFF AWAY FROM FOUNDATION.
- 6) FOOTINGS HAVE BEEN DESIGNED FOR A MINIMUM SOIL PRESSURE OF 2500 PSF. IT WILL BE THE RESPONSIBILITY OF OTHERS TO VERIFY THIS VALUE.
- 7) WHERE REINFORCING BARS ARE SHOWN CONTINUOUS, LAP SPLICE BARS 40 DIAMETERS.
- 8) APPROACHES TO BE A COMMON PLANE WITHIN 1/4".

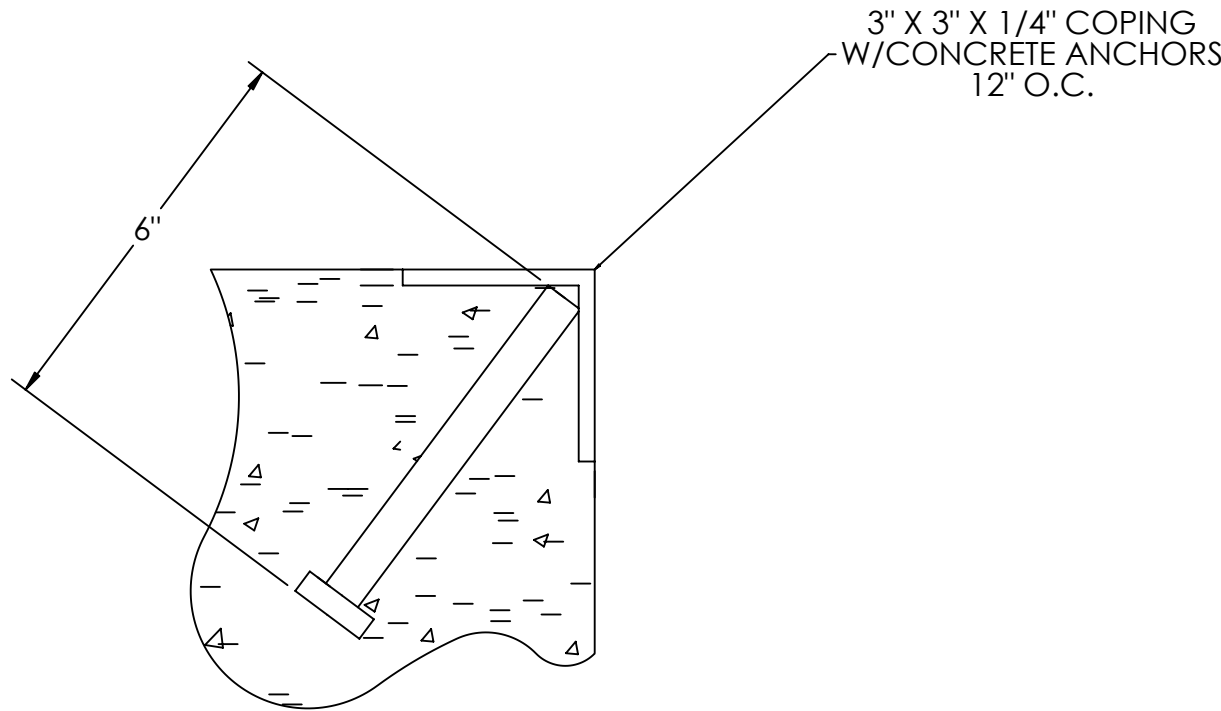
9 APPROACH THICKNESS MAY BE 10" MINIMUM WHERE ALLOWED BY STATE REGULATIONS

10 FOUNDATION MUST EXTEND A MINIMUM OF 12" BELOW THE FROST PENETRATION LINE

(ISSUED BY DATE) S. JOHNSON <u>02/24/2017</u>		(DRAWN BY DATE) S. JOHNSON <u>02/24/2017</u>		(FIELD PROPOSAL DATE) S. JOHNSON <u>03/27/2017</u>			
(TREATMENT) NONE		THIS DRAWING AND INFORMATION CONTAINED HEREIN IS AND REMAINS THE PROPERTY OF RICE LAKE WEIGHING SYSTEMS, INC. HEREINAFTER REFERRED TO AS "RICE LAKE". IT IS TO BE USED FOR RUMFORD'S PROPOSAL AND/OR FOR ITS CUSTOMER'S USE ONLY. IT SHALL NOT BE REPRODUCED, COPIED, OR OTHERWISE TRANSMITTED IN ANY FORM OR BY ANY MEANS, WITHOUT REWRITING SPECIFIC WRITTEN CONSENT AND SHALL BE IMMEDIATELY RETURNED UPON REQUEST.		UNLESS OTHERWISE SPECIFIED UNITS SHALL BE INCHES. ALL THREADS TO BE CLASS 2 ALL DIMENSIONS APPLICABLE AFTER TREATMENT			
(NUMBER OF CIRCLES) 		(TOLERANCES) DO NOT SCALE DRAWINGS/TOLERANCES UNLESS OTHERWISE SPECIFIED $.XX; \pm$ $.XXX; \pm$ \checkmark $ANGLE; \pm$		(DESCRIPTION) FOUNDATION, CONCRETE PIER 100' x 11' OIR SERIES TRUCK SCALE		(SCALE) SHEET 1 OF 3 MATERIAL	
(ESTIMATED WEIGHT (POUNDS)) \checkmark				(REV) 180207 A			

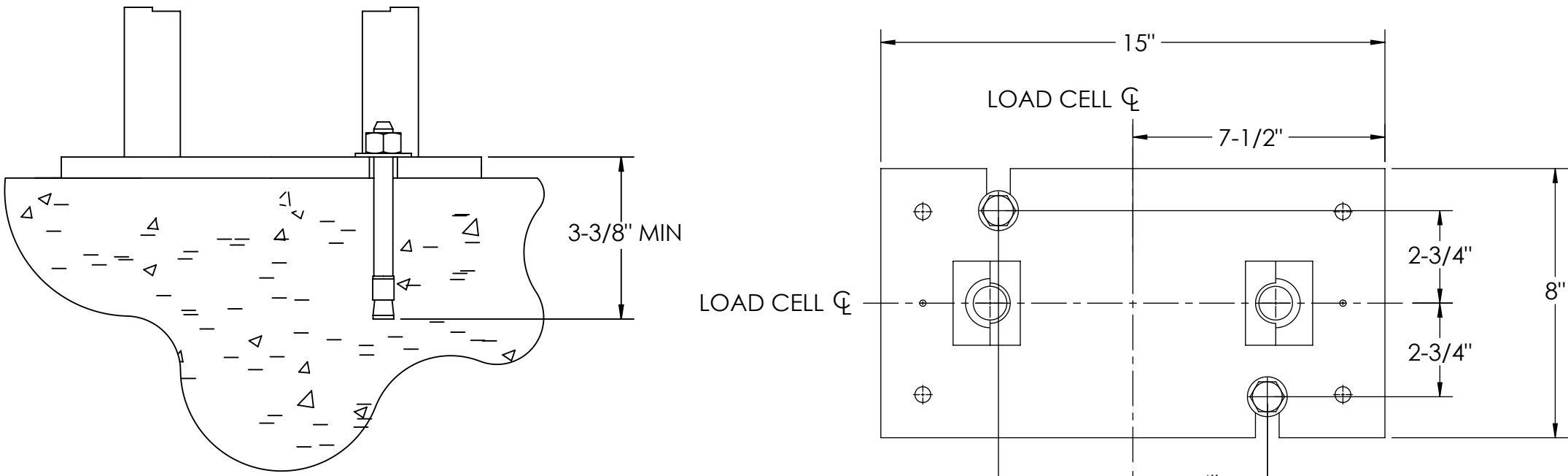
CONCRETE SCHEDULE			
		VOLUME (CUBIC YARDS)	
APPROACHES		9.1	
CLEANOUT		11.7	
PIERS		17.6	
TOTAL		38.4	
MISC. STEEL			
PIT COPING	3 X 3 X 1/4	23 LN .FT	113 LBS

VOLUME SHOWN FOR STATED PIER DEPTH.
ADD ADDITIONAL CONCRETE FOR
DEEPER PIERS AS NEEDED.

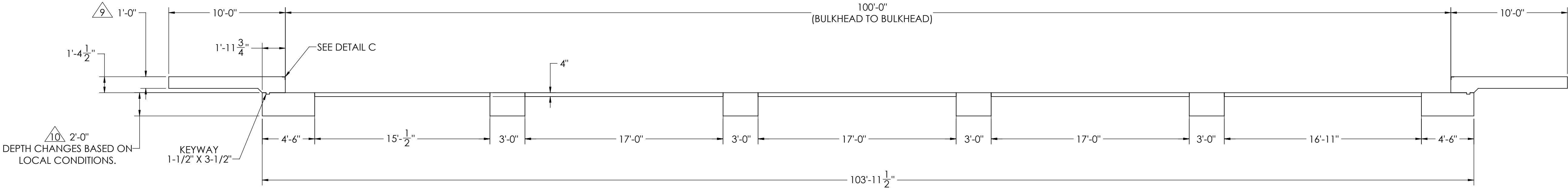
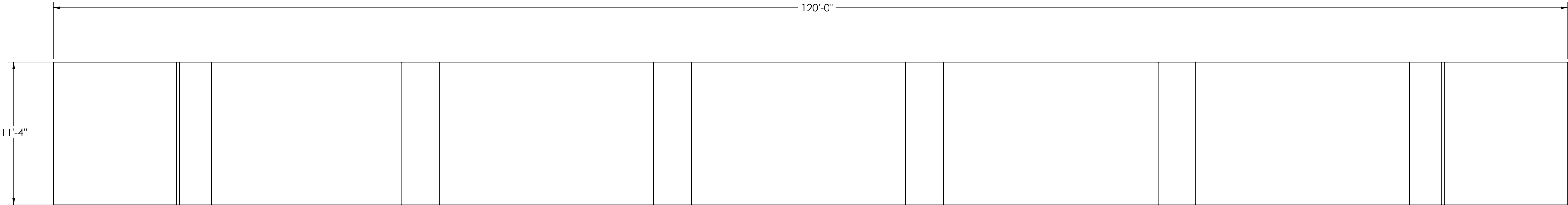


DETAIL C

CONCRETE LAYOUT

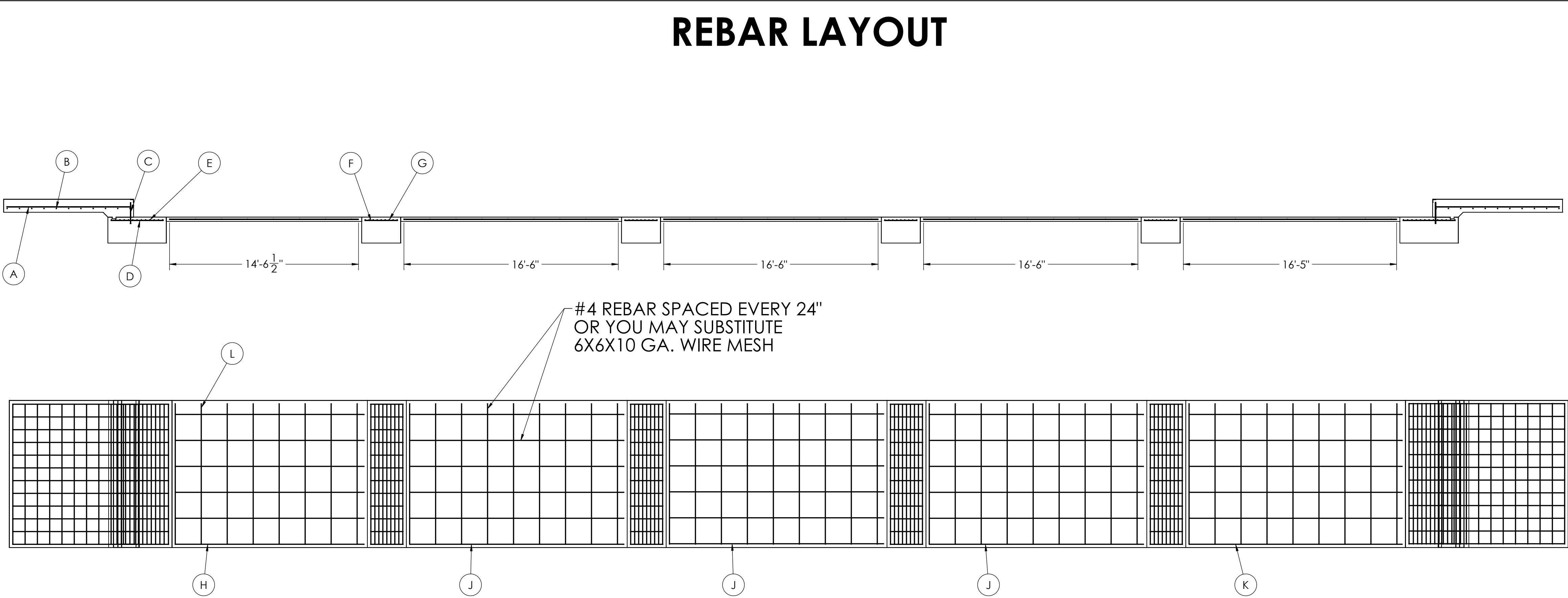


DETAIL D



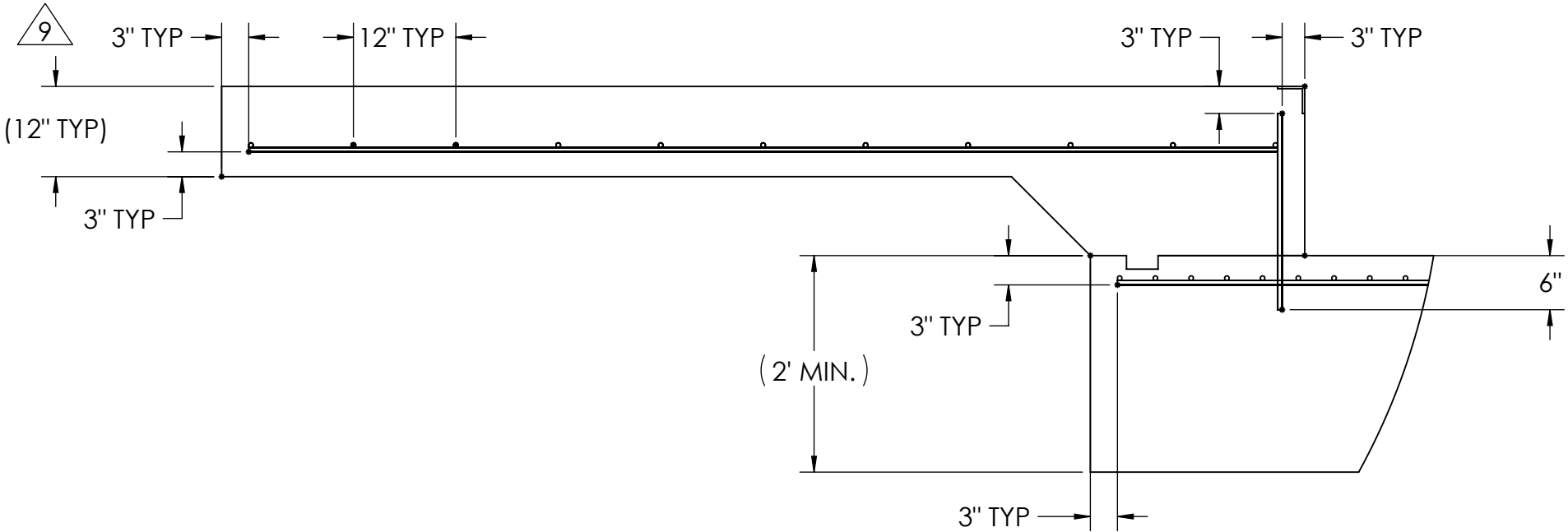
DESIGNED BY: JGMS S.JOHNSON 02/24/2017	DRAWN BY: JGMS S.JOHNSON 02/24/2017	PIER APPROVAL: JGMS S.JOHNSON 03/27/2017	RICE LAKE WEIGHING SYSTEMS	
TREATMENT NONE	THIS DRAWING AND INFORMATION CONTAINED HEREIN IS AND REMAINS THE PROPERTY OF RICE LAKE WEIGHING SYSTEMS INC. - HEREINAFTER REFERRED TO AS RLWS. IT MAY BE USED ONLY FOR RLWS' PROPOSAL AND/OR ITS CUSTOMER'S ORDERS. IT SHALL NOT BE DISCLOSED OR COPIED WITHOUT RLWS SPECIFIC WRITTEN CONSENT AND SHALL BE IMMEDIATELY RETURNED UPON REQUEST.	UNLESS OTHERWISE SPECIFIED UNITS TO BE INCHES ALL THREADS TO BE CLASS 2 ALL DIMENSIONS APPLICABLE AFTER TREATMENT	DESCRIPTION FOUNDATION, CONCRETE PIER 100' X 11' OTR SERIES TRUCK SCALE	
NUMBER OF CRANES: MINIMUM CRANE CAPACITY: ESTIMATED WEIGHT (POUNDS)	DO NOT SCALE DRAWING SURFACE FINISH TOLERANCES UNLESS OTHERWISE SPECIFIED .XX: .XXX: ANGLE: ✓	SCALE 1:60 SHEET 2 OF 3 MATERIAL 180207	REV A	

MATERIAL REQUIRMENTS				
REBAR SCHEDULE				
BAL. NO.	QUANTITY	LENGTH (FT-IN.)	DESCRIPTION	WEIGHT
A	24	9' 6"	# 4 @ 12 O.C.	152
B	22	10' 10"	# 4 @ 12 O.C.	159
C	24	1' 7 1/2"	# 4 @ 12 O.C.	26
D	24	4' 0"	# 4 @ 12 O.C.	64
E	26	10' 10"	# 4 @ 4 O.C.	188
F	48	2' 6"	# 4 @ 12 O.C.	80
G	36	10' 10"	# 4 @ 4 O.C.	261
CLEANOUT SCHEDULE				
H	6	14' 6 1/2"	# 4 @ 24 O.C.	58
J	18	16' 6"	# 4 @ 24 O.C.	198
K	6	16' 5"	# 4 @ 24 O.C.	66
L	44	10' 10"	# 4 @ 24 O.C.	318
TOTAL WEIGHT OF REBAR (LBS.)				1571
TOTAL LENGTH OF REBAR (FT.)				2352
WIRE MESH				
		6 X 6-10 GA.	940	SQ FT

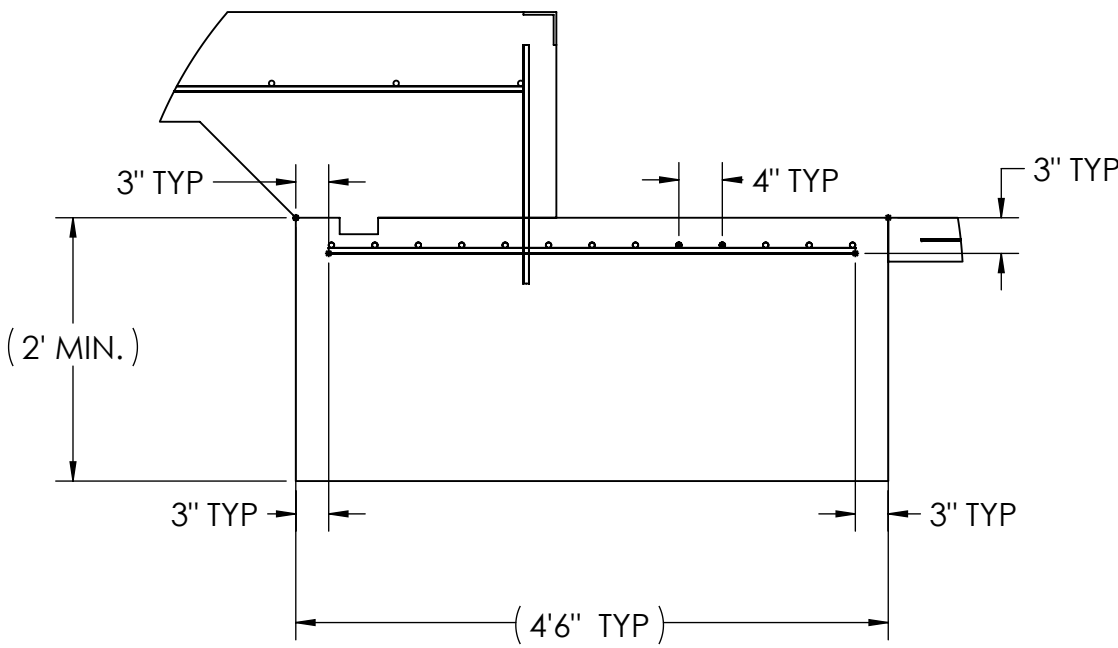


APPROACH STANDARD VIEWS

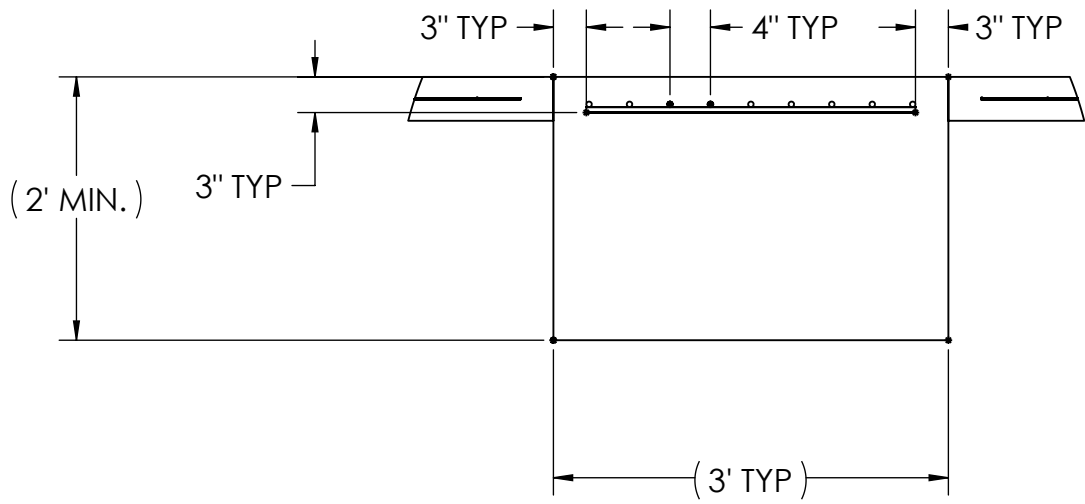
NOTES: LEFT AND RIGHT APPROACHES ARE MIRROR IMAGES OF EACH OTHER AND CONTAIN AN IDENTICAL PART LIST



APPROACH PIER STANDARD VIEWS



PIER STANDARD VIEWS



DESIGNED BY: JGMS S. JOHNSON 02/24/2017	DRAWN BY: JGMS S. JOHNSON 02/24/2017	PIER APPROVAL: DATE S. JOHNSON 03/27/2017	RICE LAKE WEIGHING SYSTEMS	
TREATMENT NONE	THIS DRAWING AND INFORMATION CONTAINED HEREIN IS AND REMAINS THE PROPERTY OF RICE LAKE WEIGHING SYSTEMS INC. - HEREINAFTER REFERRED TO AS RLWS. IT MAY BE USED ONLY FOR RLWS' PROPOSAL AND/OR ITS CUSTOMER'S ORDERS. IT SHALL NOT BE DISCLOSED OR COPIED WITHOUT RLWS' SPECIFIC WRITTEN CONSENT AND SHALL BE IMMEDIATELY RETURNED UPON REQUEST.		UNLESS OTHERWISE SPECIFIED UNITS TO BE INCHES ALL THREADS TO BE CLASS 2 ALL DIMENSIONS APPLICABLE AFTER TREATMENT	
NUMBER OF CRANES: MINIMUM CRANE CAPACITY: ESTIMATED WEIGHT (POUNDS):	DO NOT SCALE DRAWING SURFACE FINISH ✓	TOLERANCES DRAWING TOLERANCES UNLESS OTHERWISE SPECIFIED .XX: ± .XXX: ± ANGLE: ±	SCALE 1:48	SHEET 3 OF 3
FOUNDATION, CONCRETE PIER 100' X 11'			DESCRIPTION OTR SERIES TRUCK SCALE	MATERIAL 180207
THIRD ANGLE PROJECTION			REV A	