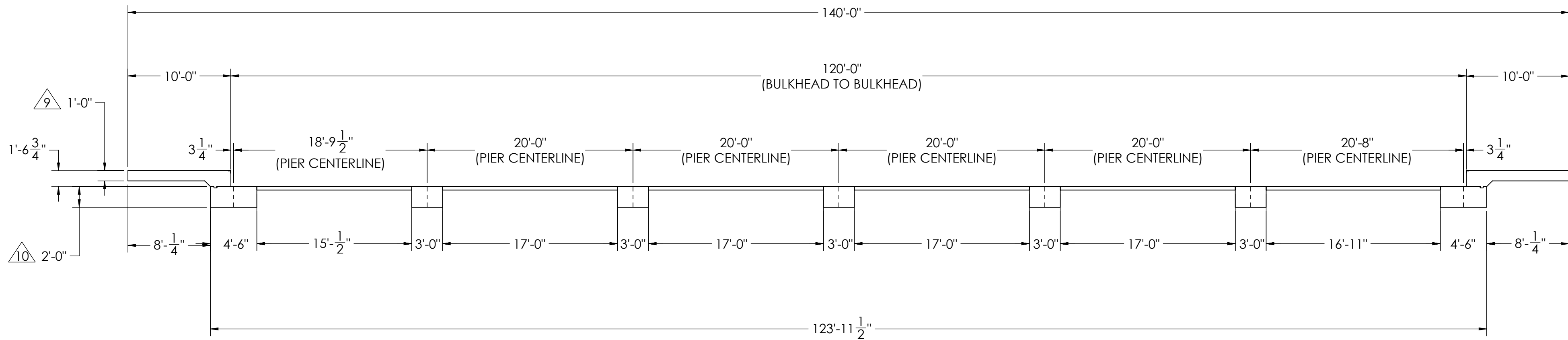
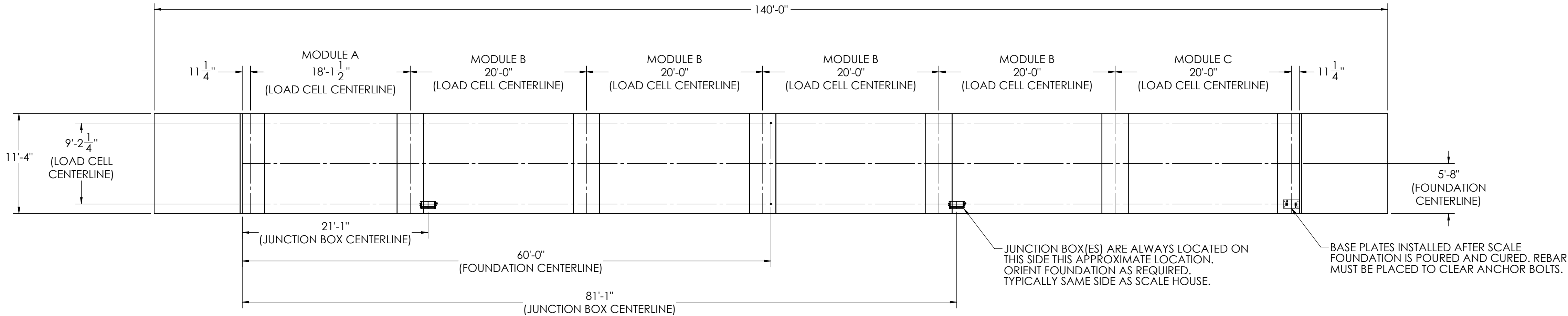








DETAILS

| REVISION | | | | |
|----------|-----|---------------------|------|------------|
| REV. | ECO | DESCRIPTION | INIT | DATE |
| A | | ENGINEERING RELEASE | SPJ | 03/30/2020 |



NOTES:

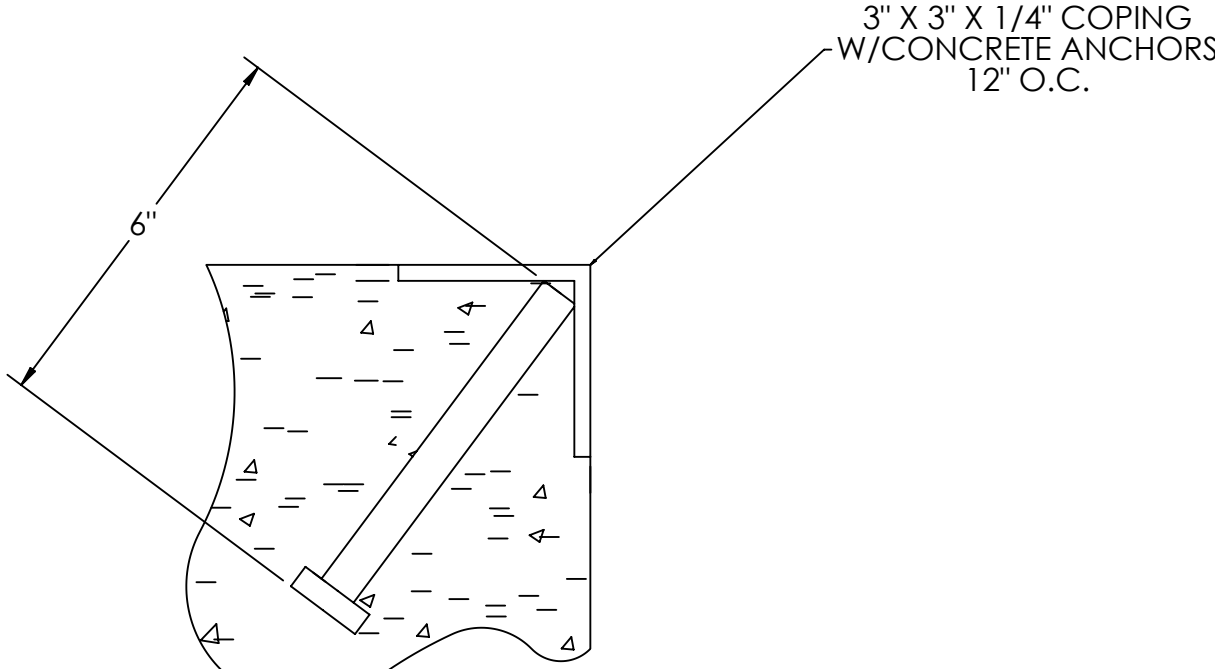
- 1) CONCRETE: f'c = 3000 PSI @ 28 DAYS.
- 2) REINFORCING STEEL: DEFORMED BARS ASTM A615 GRADE 60.
- 3) STATE AND LOCAL AGENCIES MAY HAVE VARIOUS REQUIREMENTS FOR APPROACH RAMP LENGTH, PITCH, AND FOR CLEAN OUT HEIGHT. PLEASE CHECK WITH ALL AGENCIES PRIOR TO CONSTRUCTION.
- 4) MONOLITHIC POUR IS ALLOWED AT CONTRACTOR'S DISCRETION.
- 5) DEVELOP AND MAINTAIN SITE GRADES WHICH WILL RAPIDLY DRAIN SURFACE AND ROOF RUN-OFF AWAY FROM FOUNDATION.
- 6) FOOTINGS HAVE BEEN DESIGNED FOR A MINIMUM SOIL PRESSURE OF 2500 PSF. IT WILL BE THE RESPONSIBILITY OF OTHERS TO VERIFY THIS VALUE.
- 7) WHERE REINFORCING BARS ARE SHOWN CONTINUOUS, LAP SPlice BARS 40 DIAMETERS
- 8) APPROACHES TO BE A COMMON PLANE WITHIN 1/4".

| | | | | | | | |
|---|--|---|--|---|--|---|--|
| (ISSUED BY DATE) S. JOHNSON 03/31/2020 | | (DRAWN BY DATE) S. JOHNSON 03/31/2020 | | (FREE APPROVAL DATE) S. JOHNSON 03/31/2020 | |  | |
| (TREATMENT) NONE | | THIS DRAWING AND INFORMATION CONTAINED HEREIN IS AND REMAINS THE PROPERTY OF RIGELAKE WEIGHING SYSTEMS INC. HEREINAFTER REFERRED TO AS RWS. IT MAY BE USED ONLY FOR THE RIGELAKE WEIGHING SYSTEMS AND ITS CUSTOMER. ORDERED. IF SHALL NOT BE DISCLOSED OR COPIED WITHOUT RWS SPECIFIC WRITTEN CONSENT AND SHALL BE IMMEDIATELY RETURNED UPON REQUEST. | | UNLESS OTHERWISE SPECIFIED UNITS TO BE INCHES. ALL TOLERANCES TO BE CLASS 2 ALL DIMENSIONS APPLICABLE AFTER TREATMENT | |  | |
| (NUMBER OF CRANES)  | | TOLERANCES DO NOT SCALE DRAWING UNLESS OTHERWISE SPECIFIED XX: ± XXX: ± ✓ ANGLE: ± | | (DESCRIPTION) FOUNDATION, CONCRETE PIER 120' x 11' OTR SERIES TRUCK SCALE | |  | |
| (MINIMUM CRANE CAPACITY)  | | (SCALE) 1:90 | | (SHEET) 1 OF 3 | | (MATERIAL) | |
| (ESTIMATED WEIGHT (POUNDS)) ✓ | | (THIRD ANGLE PROJECTION)  | | (ITEM) 180220 | | (REV) A | |

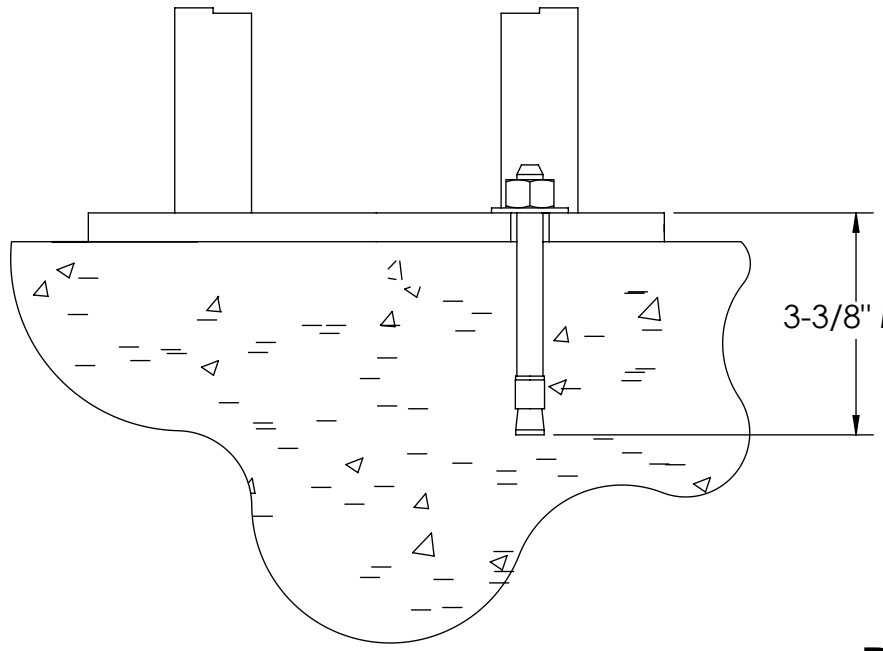
| CONCRETE SCHEDULE | | | |
|-------------------|-------------|----------------------|---------|
| | | VOLUME (CUBIC YARDS) | |
| APPROACHES | | 9.5 | |
| CLEANOUT | | 14.0 | |
| PIERS | | 20.2 | |
| TOTAL | | 43.7 | |
| | | | |
| MISC. STEEL | | | |
| PIT COPING | 3 X 3 X 1/4 | 23 LN .FT | 113 LBS |

VOLUME SHOWN FOR STATED PIER DEPTH.
ADD ADDITIONAL CONCRETE FOR
DEEPER PIERS AS NEEDED.

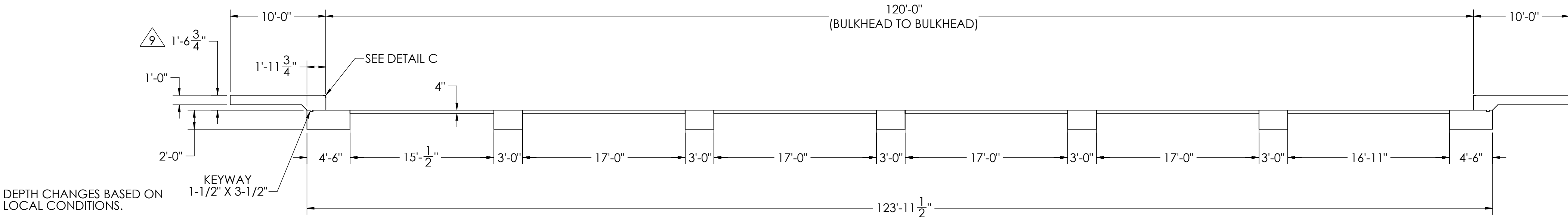
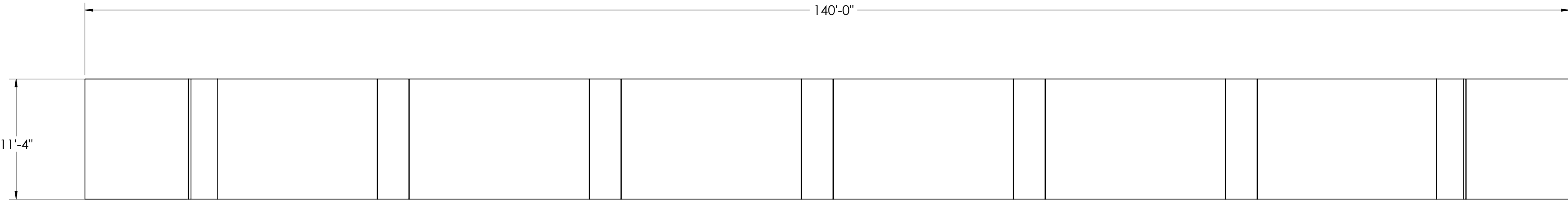
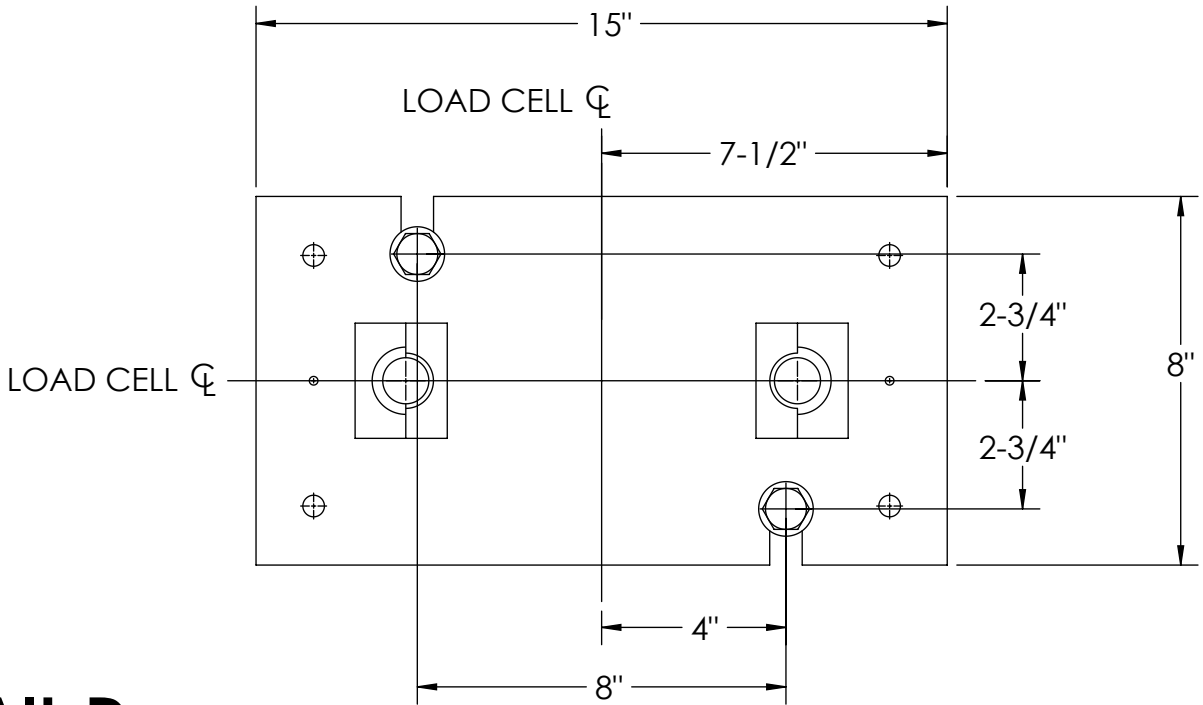
CONCRETE LAYOUT



DETAIL C



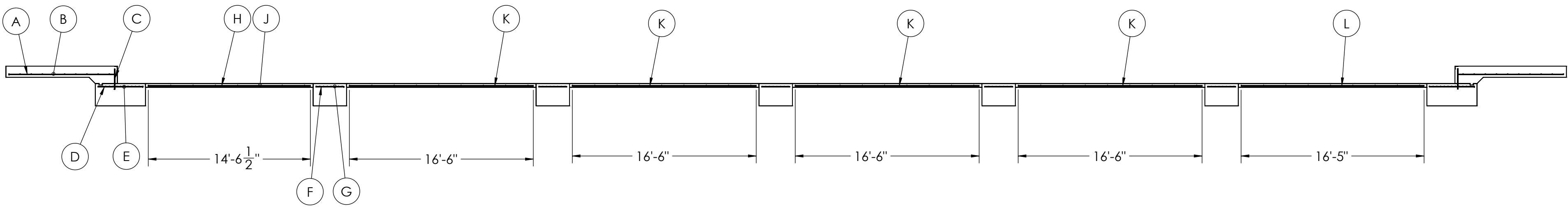
DETAIL D



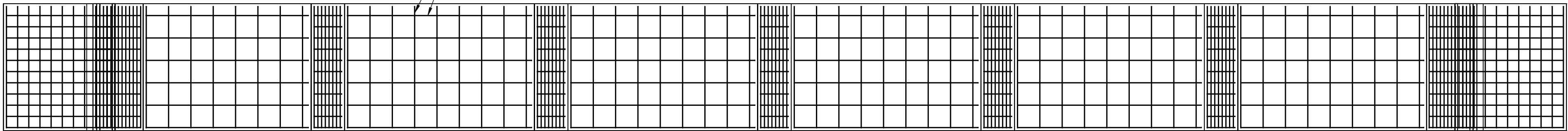
| | | | | |
|---|---|---|--|-----------|
| DESIGNED BY: J. JOHNSON S. JOHNSON 03/31/2020 | DRAWN BY: J. JOHNSON S. JOHNSON 03/31/2020 | PIER APPROVAL: J. JOHNSON S. JOHNSON 03/31/2020 | RICE LAKE WEIGHING SYSTEMS | |
| TREATMENT NONE | THIS DRAWING AND INFORMATION CONTAINED HEREIN IS AND REMAINS THE PROPERTY OF RICE LAKE WEIGHING SYSTEMS INC. - HEREINAFTER REFERRED TO AS RLWS. IT MAY BE USED ONLY FOR RLWS' PROPOSAL AND/OR ITS CUSTOMER'S ORDERS. IT SHALL NOT BE DISCLOSED OR COPIED WITHOUT RLWS' SPECIFIC WRITTEN CONSENT AND SHALL BE IMMEDIATELY RETURNED UPON REQUEST. | UNLESS OTHERWISE SPECIFIED UNITS TO BE INCHES ALL THREADS TO BE CLASS 2 ALL DIMENSIONS APPLICABLE AFTER TREATMENT | DESCRIPTION FOUNDATION, CONCRETE PIER 120' X 11' OTR SERIES TRUCK SCALE | |
| NUMBER OF CRANES: MINIMUM CRANE CAPACITY: ESTIMATED WEIGHT (POUNDS) | DO NOT SCALE DRAWING SURFACE FINISH TOLERANCES DRAWING TOLERANCES UNLESS OTHERWISE SPECIFIED .XX: .XXX: ANGLE: | SCALE 1:90 SHEET 2 OF 3 THIRD ANGLE PROJECTION P/N | MATERIAL 180220 | REV. A |

| MATERIAL REQUIREMENTS | | | | |
|------------------------------|----------|-----------------|---------------|------------|
| REBAR SCHEDULE | | | | |
| BAL. NO. | QUANTITY | LENGTH (FT-IN.) | DESCRIPTION | WEIGHT |
| A | 22 | 9' 6" | # 4 @ 12 O.C. | 140 |
| B | 20 | 10' 10" | # 4 @ 12 O.C. | 145 |
| C | 22 | 1' 9 3/4" | # 4 @ 12 O.C. | 27 |
| D | 22 | 4' 0" | # 4 @ 12 O.C. | 59 |
| E | 26 | 10' 10" | # 4 @ 4 O.C. | 188 |
| F | 55 | 2' 6" | # 4 @ 12 O.C. | 92 |
| G | 45 | 10' 10" | # 4 @ 4 O.C. | 326 |
| CLEANOUT SCHEDULE | | | | |
| H | 6 | 14' 6 1/2" | # 4 @ 24 O.C. | 58 |
| J | 63 | 10' 10" | # 4 @ 24 O.C. | 456 |
| K | 24 | 16' 6" | # 4 @ 24 O.C. | 265 |
| L | 6 | 16' 5" | # 4 @ 24 O.C. | 66 |
| TOTAL WEIGHT OF REBAR (LBS.) | | | | 1820 |
| TOTAL LENGTH OF REBAR (FT.) | | | | 2724 |
| WIRE MESH | | 6 X 6-10 GA. | | 1099 SQ FT |

REBAR LAYOUT

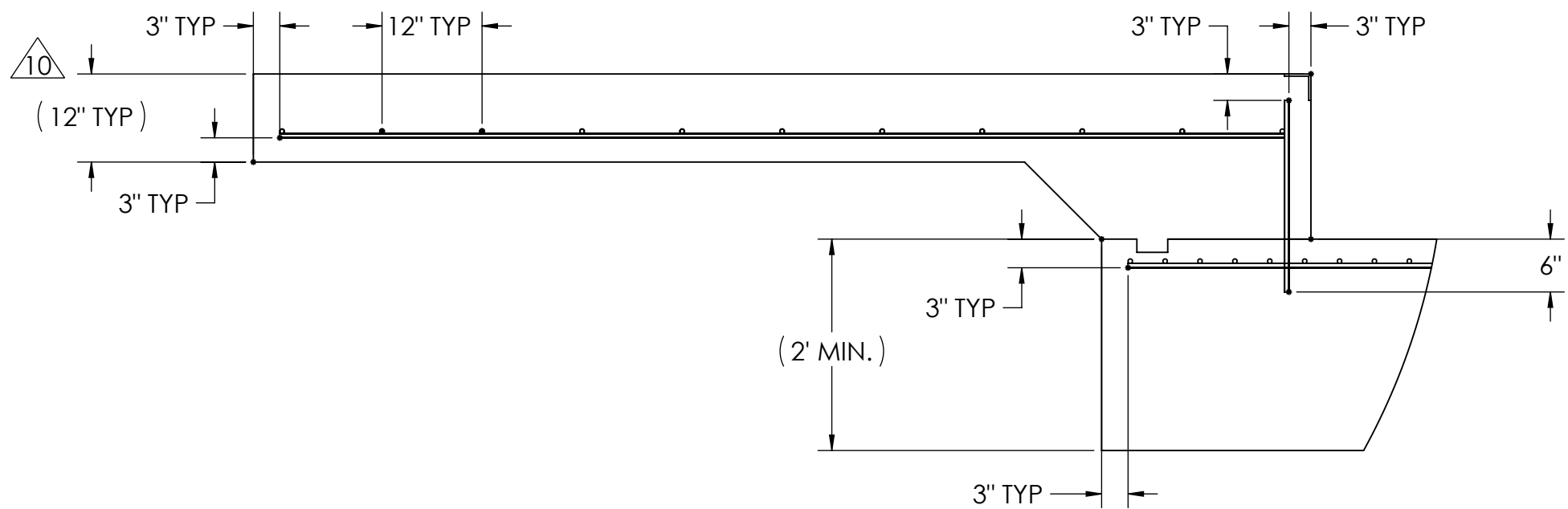


#4 REBAR SPACED EVERY 24"
OR YOU MAY SUBSTITUTE
6X6X10 GA. WIRE MESH

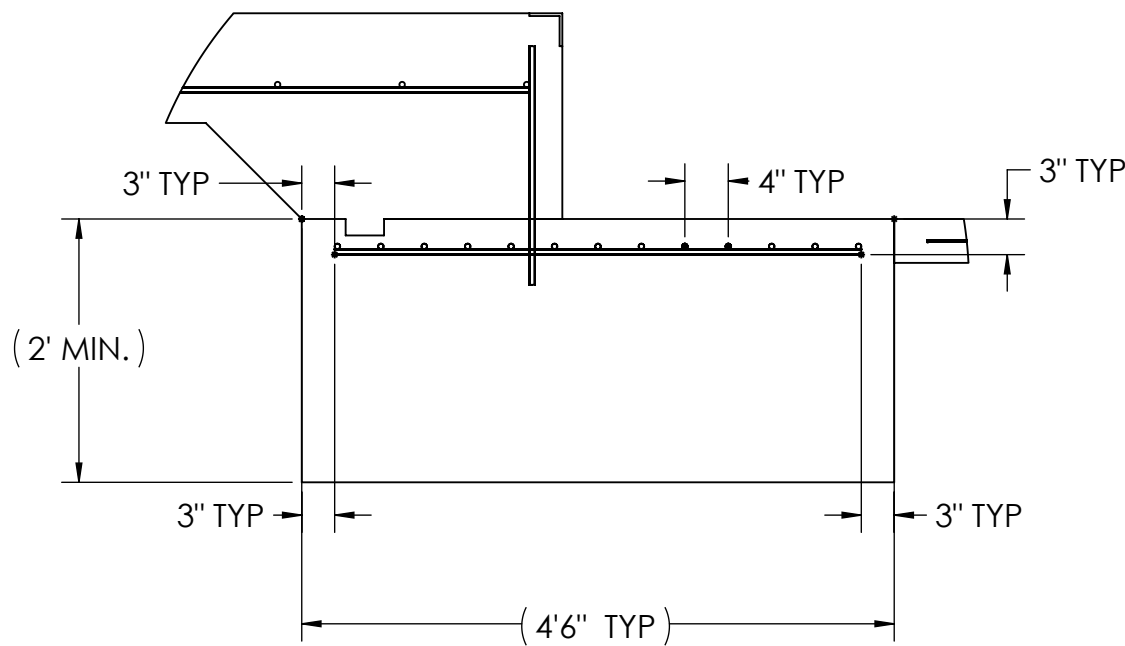


APPROACH STANDARD VIEWS

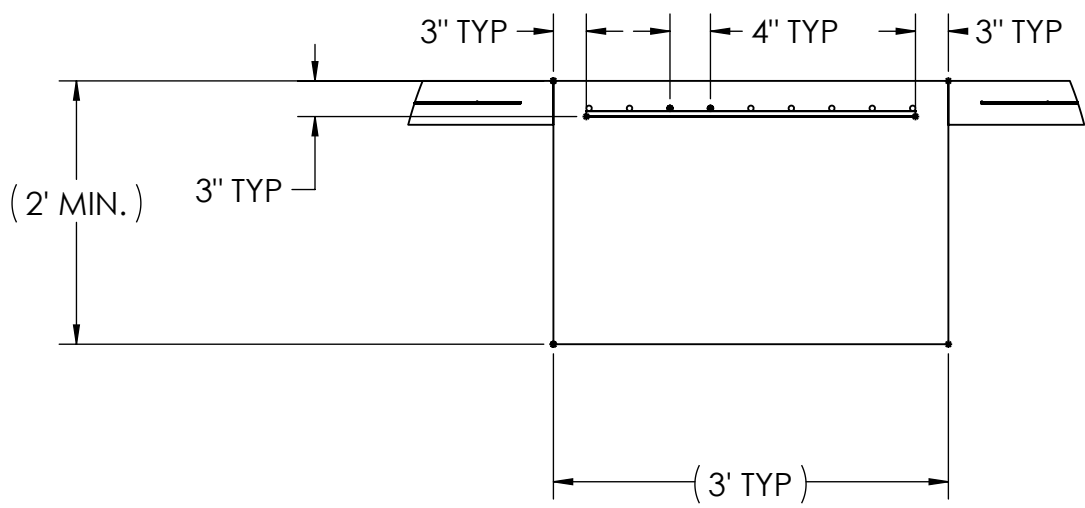
NOTES: 1) LEFT AND RIGHT APPROACHES ARE MIRROR IMAGES OF EACH OTHER AND CONTAIN AN IDENTICAL PART LIST






APPROACH PIER STANDARD VIEWS



PIER STANDARD VIEWS



| | | | | | | | |
|---|--|---|--|--|--|---|--|
| DESIGNED BY DATE S. JOHNSON 03/31/2020 | | DRAWN BY DATE S. JOHNSON 03/31/2020 | | FIELD OPERATOR DATE S. JOHNSON 03/31/2020 | |  | |
| TREATMENT NONE | | THIS DRAWING AND INFORMATION CONTAINED HEREIN IS AND REMAINS THE PROPERTY OF RICE LAKE WEIGHING SYSTEMS INC. HEREINAFTER RELEVANT TO THIS PROJECT. IT MAY BE USED FOR RFP'S, PROPOSALS AND/OR FOR ITS CUSTOMER'S REFERENCE. IT SHALL NOT BE REPRODUCED, COPIED, OR WITHOUT RLS'S SPECIFIC WRITTEN CONSENT AND SHALL BE IMMEDIATELY RETURNED UPON REQUEST. | | UNLESS OTHERWISE SPECIFIED, ALL UNITS TO BE IN INCHES. ALL THREADS TO BE CLASS 2 ALL DIMENSIONS APPLICABLE AFTER TREATMENT | | | |
| NUMBER OF CRANES MINIMUM CRANE CAPACITY (ESTIMATED WEIGHT POINTS) | | DO NOT SCALE DRAWING  TOLERANCES DRAWING TOLERANCES UNLESS OTHERWISE SPECIFIED .XX; ± .XXX; ± ✓ ANGLE: ± | | DESCRIPTION FOUNDATION, CONCRETE PIER 120' x 11' OTR SERIES TRUCK SCALE | | | |
| | | SCALE 1:48 | | SHEET 3 OF 3 | | MATERIAL | |
| | | BIRD ANGLE PROJECTION  | | PIN 180220 | | REV A | |