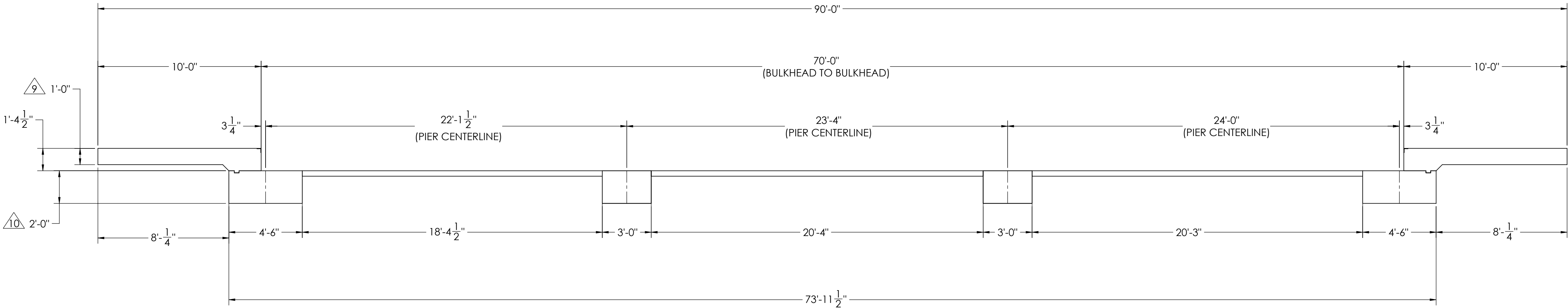
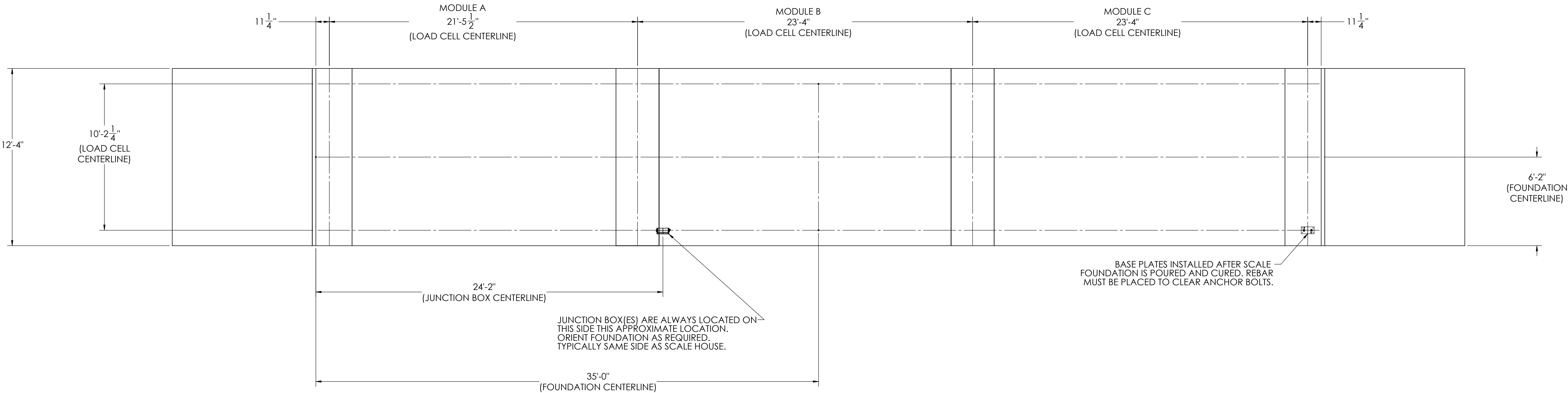


DETAILS

		REVISION		
REV.	ECO	DESCRIPTION	INIT	DATE
A		ENGINEERING RELEASE	SPJ	02/22/2017



NOTES:

- 1) CONCRETE: f<sub>c</sub> = 3000 PSI @ 28 DAYS.
- 2) REINFORCING STEEL: DEFORMED BARS ASTM A615 GRADE 60.
- 3) STATE AND LOCAL AGENCIES MAY HAVE VARIOUS REQUIREMENTS FOR APPROACH RAMP LENGTH, PITCH, AND FOR CLEAN OUT HEIGHT. PLEASE CHECK WITH ALL AGENCIES PRIOR TO CONSTRUCTION.
- 4) MONOLITHIC POUR IS ALLOWED AT CONTRACTOR'S DISCRETION.
- 5) DEVELOP AND MAINTAIN SITE GRADES WHICH WILL RAPIDLY DRAIN SURFACE AND ROOF RUN-OFF AWAY FROM FOUNDATION.
- 6) FOOTINGS HAVE BEEN DESIGNED FOR A MINIMUM SOIL PRESSURE OF 2500 PSF. IT WILL BE THE RESPONSIBILITY OF OTHERS TO VERIFY THIS VALUE.
- 7) WHERE REINFORCING BARS ARE SHOWN CONTINUOUS, LAP SPLICE BARS 40 DIAMETERS.
- 8) APPROACHES TO BE A COMMON PLANE WITHIN 1/4".

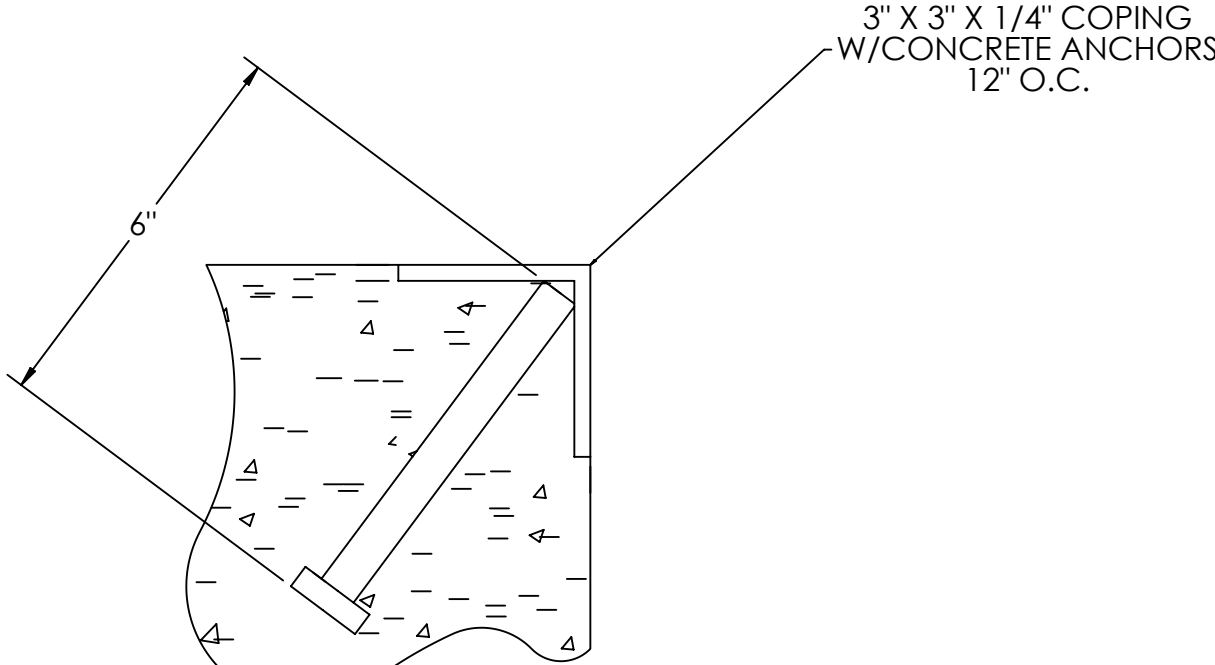
- APPROACH THICKNESS MAY BE 10" MINIMUM WHERE ALLOWED BY STATE REGULATIONS
- FOUNDATION MUST EXTEND A MINIMUM OF 12" BELOW THE FROST PENETRATION LINE

DESIGNED BY/DATE S. JOHNSON 02/22/2017		DRAWN BY/DATE S. JOHNSON 02/22/2017		PIER APPROVAL/DATE S. JOHNSON 03/27/2017		
TREATMENT  NONE		THIS DRAWING AND INFORMATION CONTAINED HEREIN IS AND REMAINS THE PROPERTY OF RICE LAKE WEIGHING SYSTEMS INC. - HEREINAFTER REFERRED TO AS RLWS. IT MAY BE USED ONLY FOR RLWS' PROPOSAL AND/OR ITS CUSTOMER'S ORDERS. IT SHALL NOT BE DISCLOSED OR COPIED WITHOUT RLWS SPECIFIC WRITTEN CONSENT AND SHALL BE IMMEDIATELY RETURNED UPON REQUEST.		UNLESS OTHERWISE SPECIFIED UNITS TO BE INCHES ALL THREADS TO BE CLASS 2 AFTER TREATMENT		
NUMBER OF CRANES: 		TOLERANCES DRAWING TOLERANCES UNLESS OTHERWISE SPECIFIED SURFACE FINISH DO NOT SCALE ✓ ANGLE: ±		DESCRIPTION FOUNDATION, CONCRETE PIER 70' X 12' OTR SERIES TRUCK SCALE		
MINIMUM CRANE CAPACITY: 		ESTIMATED WEIGHT (POUNDS) 		SCALE 1:45	SHEET 1 OF 3	
				THIRD ANGLE PROJECTION 	PTN 180297	REV. A

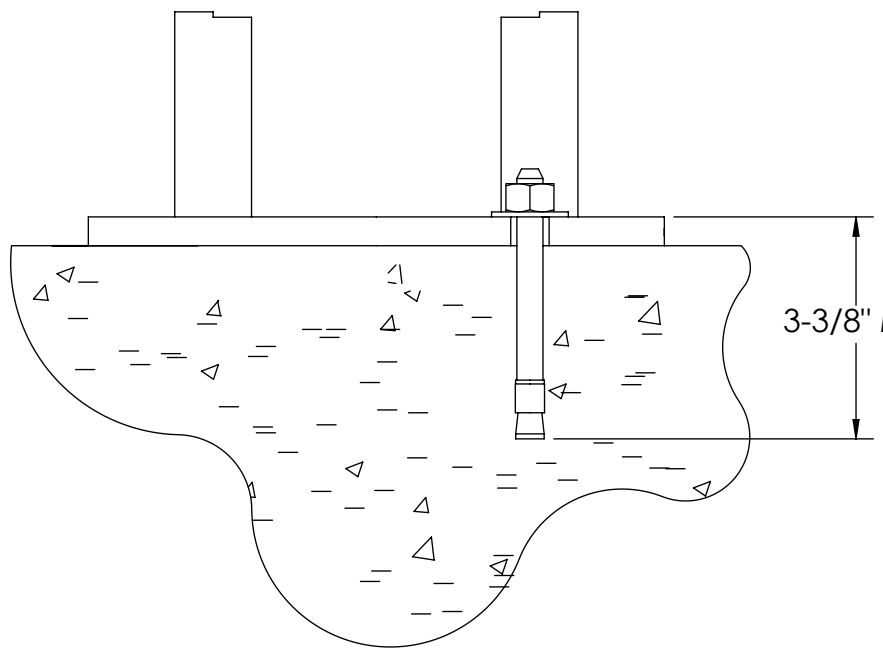
CONCRETE SCHEDULE			
		VOLUME (CUBIC YARDS)	
APPROACHES		9.9	
CLEANOUT		9.0	
PIERS		13.7	
TOTAL		32.6	
MISC. STEEL			
PIT COPING	3 X 3 X 1/4	23 LN .FT	113 LBS

VOLUME SHOWN FOR STATED PIER DEPTH.  
ADD ADDITIONAL CONCRETE FOR  
DEEPER PIERS AS NEEDED.

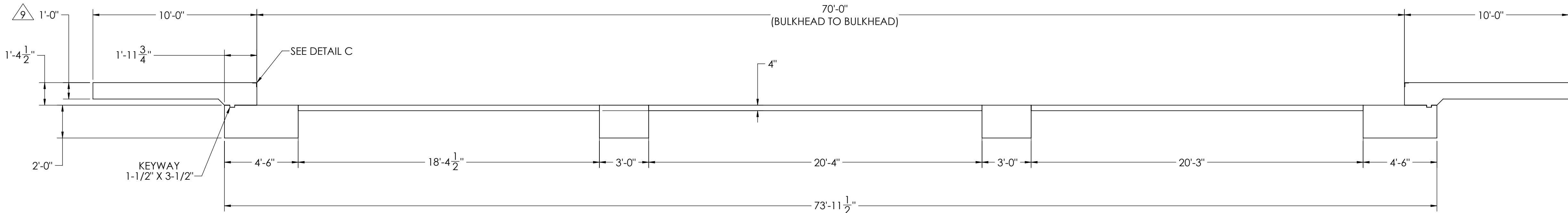
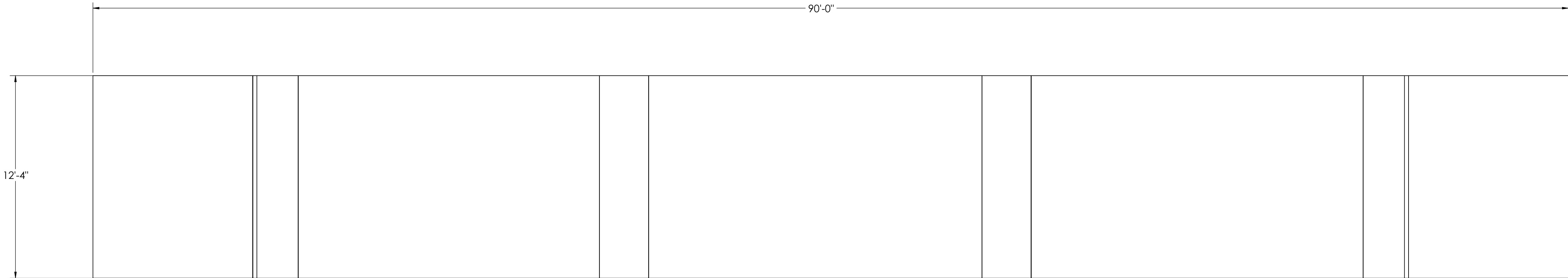
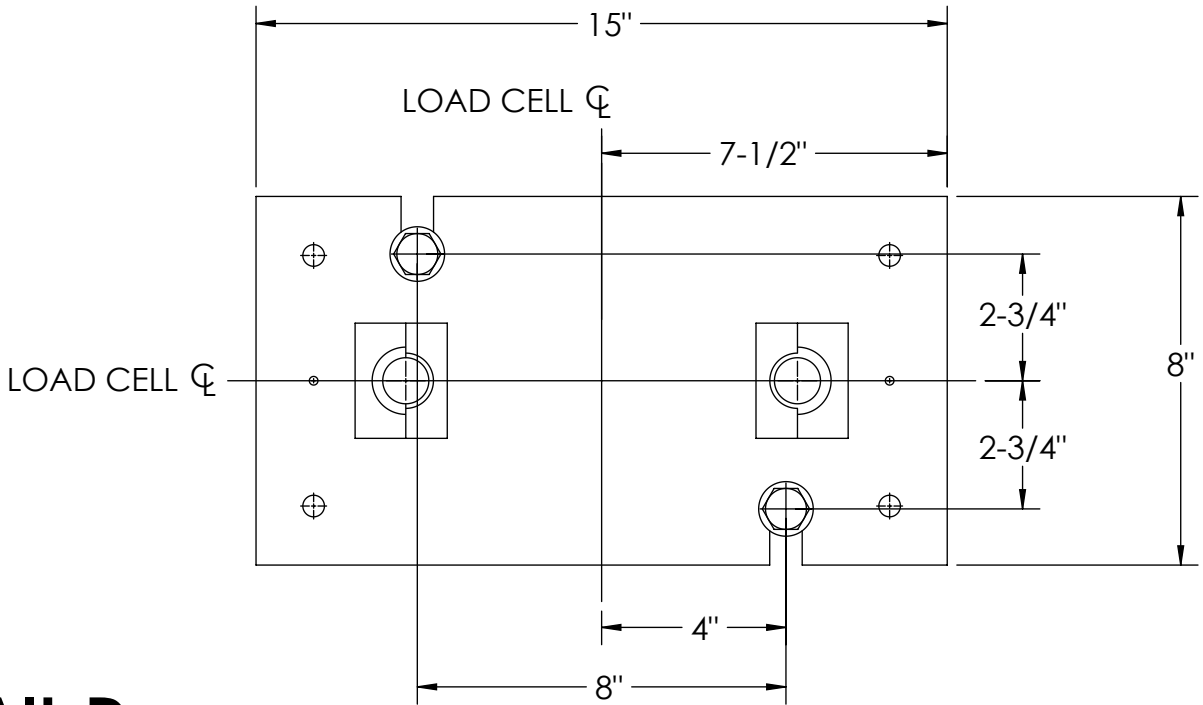
## CONCRETE LAYOUT

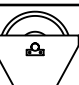



DETAIL C



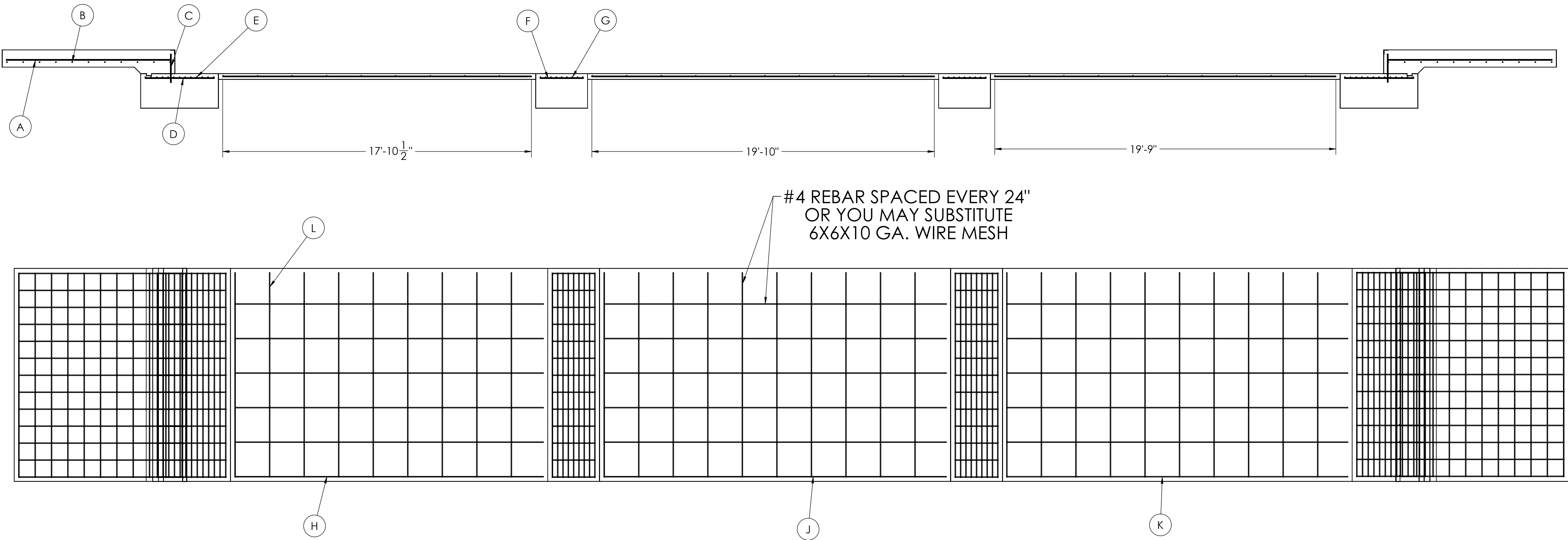
DETAIL D



DESIGNED BY DATE S. JOHNSON 02/22/2017		DRAWN BY DATE S. JOHNSON 02/22/2017		PIER APPROVAL DATE S. JOHNSON 03/27/2017		<div><b>RICE LAKE</b> WEIGHING SYSTEMS</div>							
TREATMENT  NONE		THIS DRAWING AND INFORMATION CONTAINED HEREIN IS AND REMAINS THE PROPERTY OF RICE LAKE WEIGHING SYSTEMS INC. - HEREINAFTER REFERRED TO AS RLWS. IT MAY BE USED ONLY FOR RLWS' PROPOSAL AND/OR ITS CUSTOMER'S ORDERS. IT SHALL NOT BE DISCLOSED OR COPIED WITHOUT RLWS SPECIFIC WRITTEN CONSENT AND SHALL BE IMMEDIATELY RETURNED UPON REQUEST.		UNLESS OTHERWISE SPECIFIED UNITS TO BE INCHES ALL THREADS TO BE CLASS 2 ALL DIMENSIONS APPLICABLE AFTER TREATMENT									
NUMBER OF CRANES:  MINIMUM CRANE CAPACITY:  ESTIMATED WEIGHT (POUNDS):		<div></div> <div>DO NOT SCALE DRAWING SURFACE FINISH ✓</div> <div>TOLERANCES DRAWINGS TOLERANCES UNLESS OTHERWISE SPECIFIED .XX: .XXX: ANGLE:</div>		SCALE 1:45		SHEET 2 OF 3		MATERIAL  THIRD ANGLE PROJECTION 		FOUNDATION, CONCRETE PIER 70' X 12' OTR SERIES TRUCK SCALE		REV A	

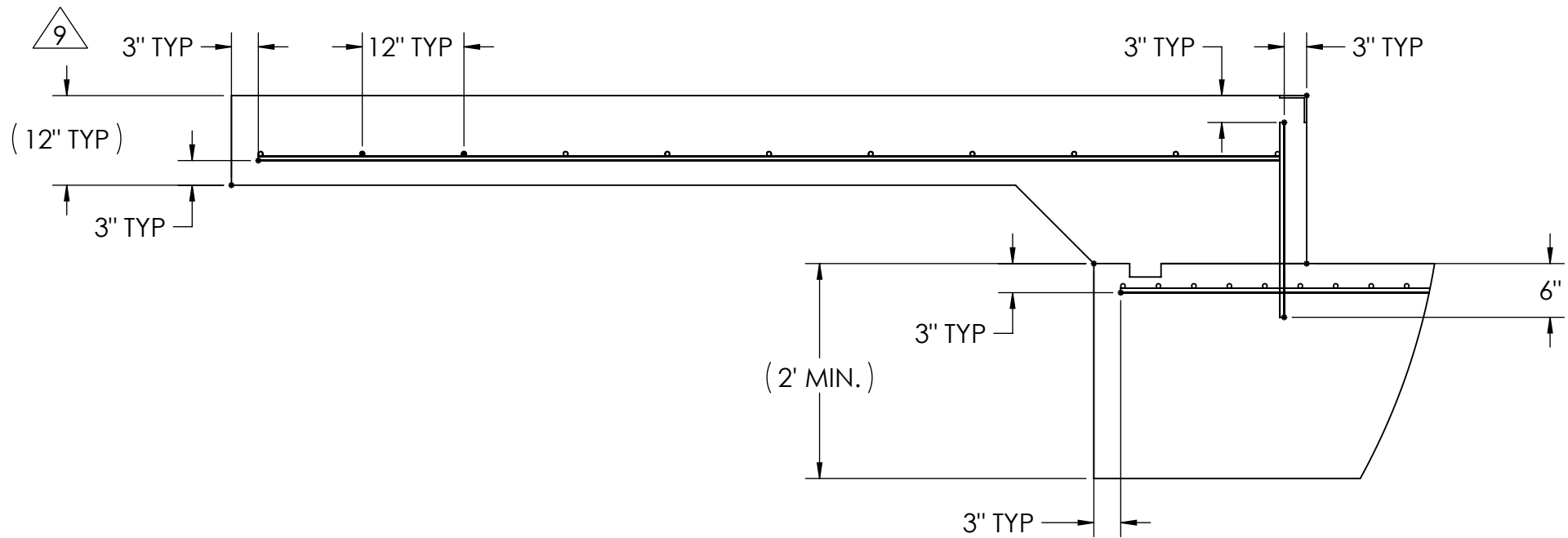
MATERIAL REQUIREMENTS				
REBAR SCHEDULE				
BAL. NO.	QUANTITY	LENGTH (FT-IN.)	DESCRIPTION	WEIGHT
A	26	9' 6"	# 4 @ 12 O.C.	165
B	26	11' 10"	# 4 @ 12 O.C.	206
C	26	1'7 1/2"	# 4 @ 12 O.C.	28
D	26	4' 0"	# 4 @ 12 O.C.	69
E	26	11' 10"	# 4 @ 4 O.C.	206
F	26	2' 6"	# 4 @ 12 O.C.	43
G	18	11' 10"	# 4 @ 4 O.C.	142
CLEANOUT SCHEDULE				
H	6	0' 0"	# 4 @ 24 O.C.	0
J	6	0' 0"	# 4 @ 24 O.C.	0
K	6	0' 0"	# 4 @ 24 O.C.	0
L	29	0' 0"	# 4 @ 24 O.C.	0
TOTAL WEIGHT OF REBAR (LBS.)				859
TOTAL LENGTH OF REBAR (FT.)				2118
WIRE MESH		6 X 6-10 GA.		609 SQ FT

# REBAR LAYOUT

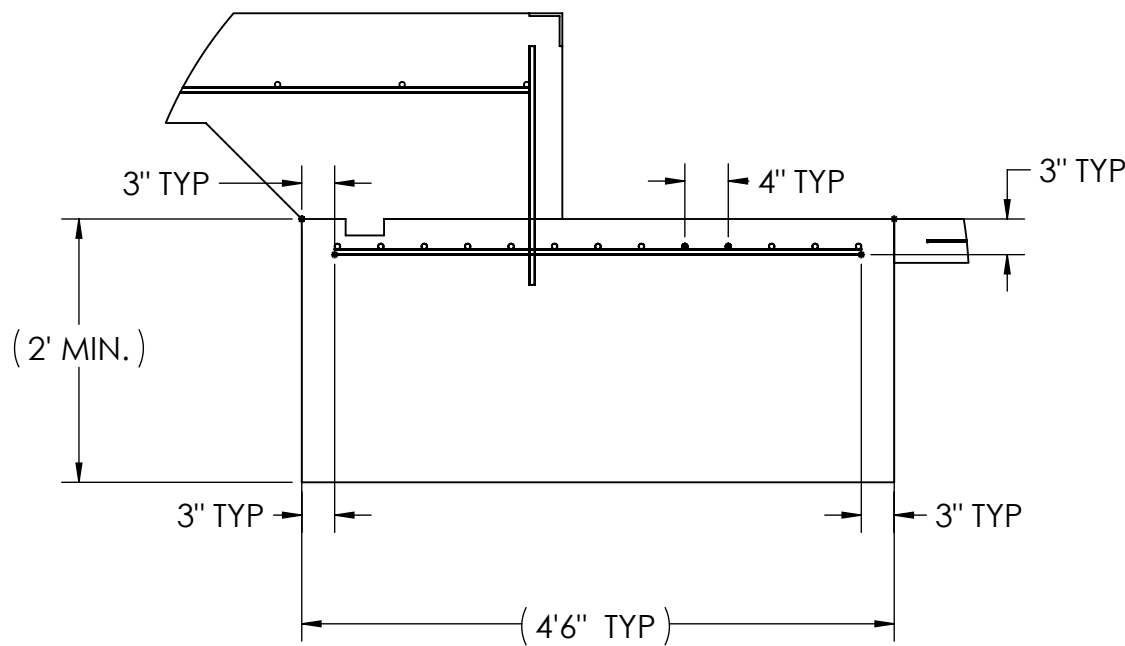


## APPROACH STANDARD VIEWS

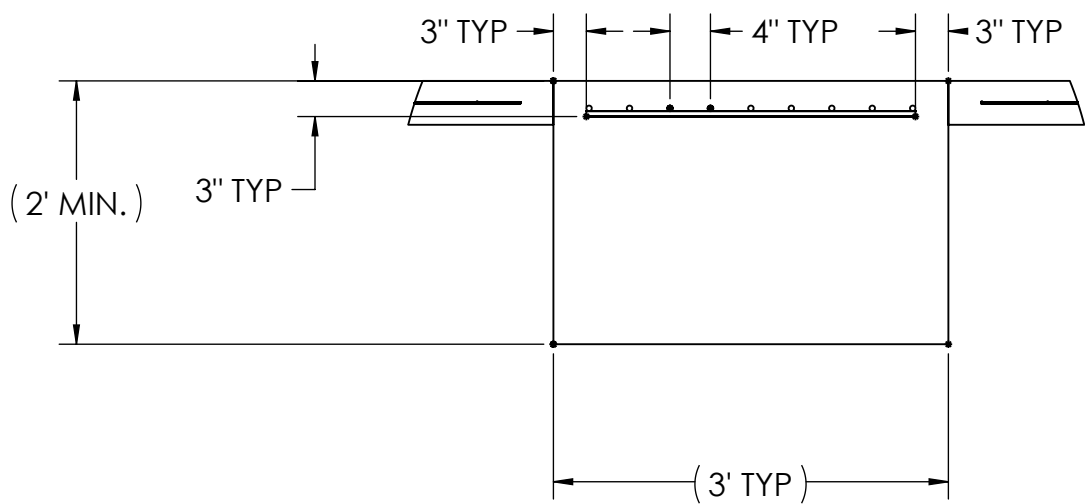
**NOTES:** 1) LEFT AND RIGHT APPROACHES ARE MIRROR IMAGES OF EACH OTHER AND CONTAIN AN IDENTICAL PART LIST






## APPROACH PIER STANDARD VIEWS



## PIER STANDARD VIEWS



DESIGNED BY DATE <b>S. JOHNSON</b> <b>02/22/2017</b>		DRAWN BY DATE <b>S. JOHNSON</b> <b>02/22/2017</b>		FIELD APPROVAL DATE <b>S. JOHNSON</b> <b>03/27/2017</b>			
TREATMENT <b>NONE</b>		THIS DRAWING AND INFORMATION CONTAINED HEREIN IS AND REMAINS THE PROPERTY OF RICE LAKE WEIGHING SYSTEMS INC. HEREINAFTER REFERRED TO AS RLS. IT MAY BE USED FOR THE RLS' PROPOSAL AND/OR ITS CUSTOMER'S PURPOSES. IT SHALL NOT BE REPRODUCED OR COPIED WITHOUT RLS'S SPECIFIC WRITTEN CONSENT AND SHALL BE IMMEDIATELY RETURNED UPON REQUEST.		UNLESS OTHERWISE SPECIFIED UNITS TO BE IN INCHES. ALL THREADS TO BE CLASS 2 ALL DIMENSIONS APPLICABLE AFTER TREATMENT			
NUMBER OF CRANES <b>1</b>		 DO NOT SCALE DRAWING MINIMUM CRANE CAPACITY: <b>XX: ±</b> <b>XXX: ±</b> (ESTIMATED WEIGHT POINTS) <b>✓</b> <b>ANGLE: ±</b>		TOLERANCES DRAWING TOLERANCES UNLESS OTHERWISE SPECIFIED <b>XX: ±</b> <b>XXX: ±</b> <b>ANGLE: ±</b>		DESCRIPTION <b>FOUNDATION, CONCRETE PIER 70' x 12' OTR SERIES TRUCK SCALE</b>	
SCALE		SHEET		MATERIAL		REV	
1:48		3 OF 3				<b>180297</b> <b>A</b>	