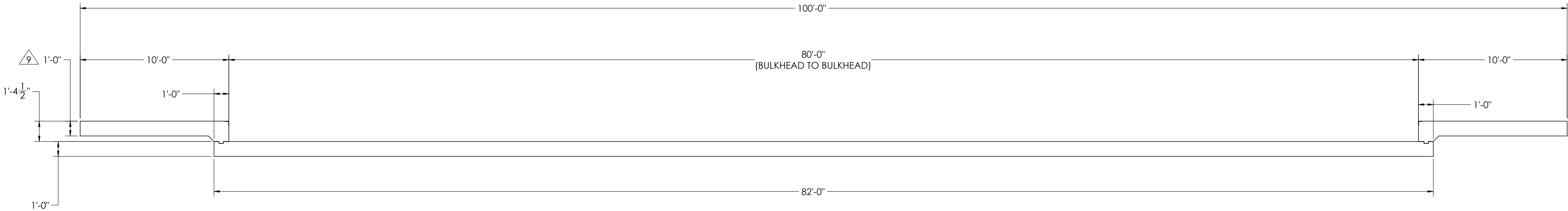
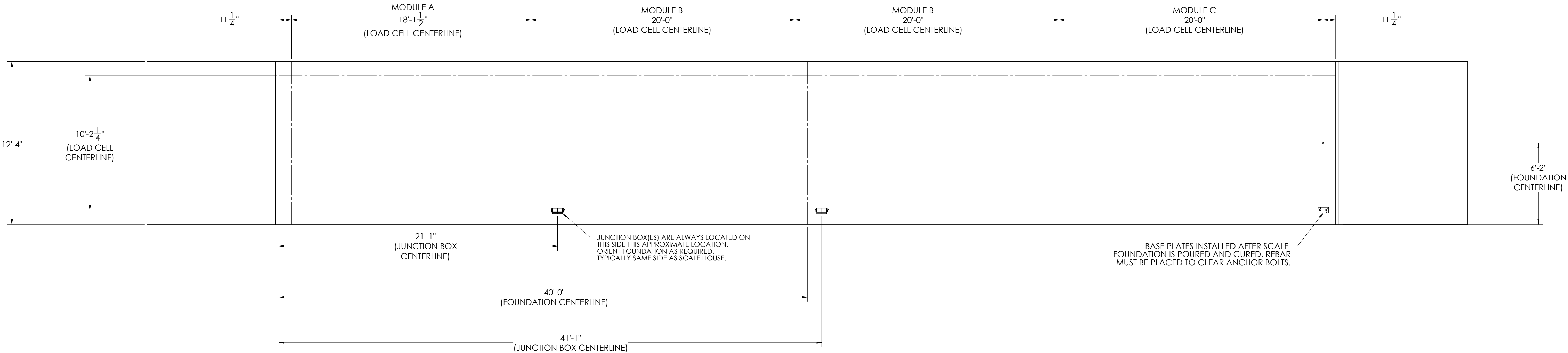


REVISION				
REV.	ECO	DESCRIPTION	INIT	DATE
A		ENGINEERING RELEASE	SPJ	02/17/2017

# DETAILS



## NOTES:

- 1) CONCRETE: f<sub>c</sub> = 3000 PSI @ 28 DAYS.
- 2) REINFORCING STEEL: DEFORMED BARS ASTM A615 GRADE 60.
- 3) STATE AND LOCAL AGENCIES MAY HAVE VARIOUS REQUIREMENTS FOR APPROACH RAMP LENGTH, PITCH, AND FOR CLEAN OUT HEIGHT. PLEASE CHECK WITH ALL AGENCIES PRIOR TO CONSTRUCTION.
- 4) MONOLITHIC POUR OF SLAB AND APPROACHES IS ALLOWED, AT CONTRACTOR'S DISCRETION.
- 5) DEVELOP AND MAINTAIN SITE GRADES WHICH WILL RAPIDLY DRAIN SURFACE AND ROOF RUN-OFF AWAY FROM FOUNDATION.
- 6) FOOTINGS HAVE BEEN DESIGNED FOR A MINIMUM SOIL PRESSURE OF 1500 PSF, IT WILL BE THE RESPONSIBILITY OF OTHERS TO VERIFY THIS VALUE.
- 7) WHERE REINFORCING BARS ARE SHOWN CONTINUOUS, LAP SPLICE BARS 40 DIAMETERS.
- 8) APPROACHES TO BE A COMMON PLANE WITHIN 1/4".

9) APPROACH THICKNESS MAY BE 10" MINIMUM WHERE ALLOWED BY STATE REGULATIONS

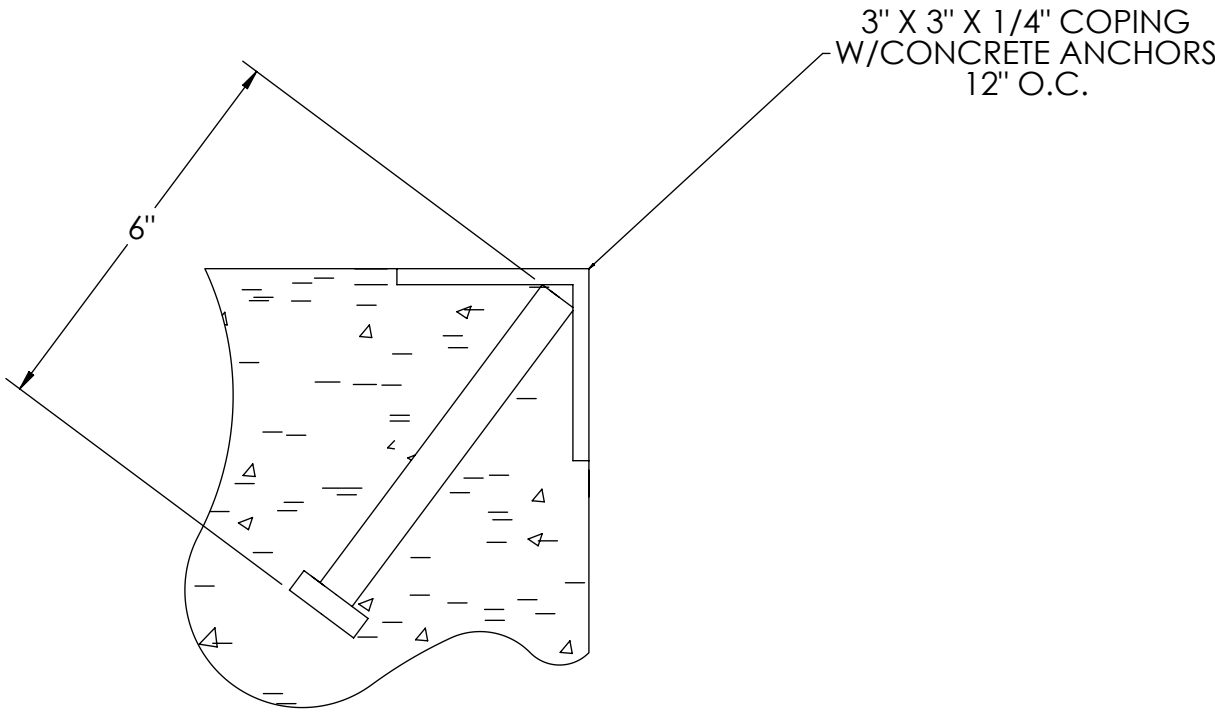
- 10) IF FROST CAN PENETRATE BELOW FOUNDATION, AT LEAST 12 INCHES OF WELL DRAINED, COMPACTED BASE MATERIAL MUST BE PROVIDED UNDER FOUNDATION

DESIGNED BY / DATE S. JOHNSON 02/17/2017	DRAWN BY / DATE S. JOHNSON 02/17/2017	FIELD APPROVAL / DATE S. JOHNSON 09/28/2017	<b>RICE LAKE® WEIGHING SYSTEMS</b>	
TREATMENT  NONE	THIS DRAWING AND INFORMATION CONTAINED HEREIN IS AND REMAINS THE PROPERTY OF RICE LAKE WEIGHING SYSTEMS INC. - HEREINAFTER REFERRED TO AS RLWS. IT MAY BE USED ONLY FOR RLWS' PROPOSAL AND/OR ITS CUSTOMER'S ORDERS. IT SHALL NOT BE DISCLOSED OR COPIED WITHOUT RLWS' SPECIFIC WRITTEN CONSENT AND SHALL BE IMMEDIATELY RETURNED UPON REQUEST.		UNLESS OTHERWISE SPECIFIED UNITS TO BE INCHES ALL THREADS TO BE CLASS 2 ALL DIMENSIONS APPLICABLE AFTER TREATMENT	
NUMBER OF CRANES:  MINIMUM CRANE CAPACITY:  ESTIMATED WEIGHT (POUNDS):	DO NOT SCALE DRAWING SURFACE FINISH ✓	TOLERANCES DRAWING TOLERANCES UNLESS OTHERWISE SPECIFIED .XX: ± .XXX: ± ANGLE: ±	SCALE 1:45	SHEET 1 OF 3
FOUNDATION, CONCRETE SLAB 80' X 12' OTR SERIES TRUCK SCALE			THIRD ANGLE PROJECTION FPM	MATERIAL <b>180307</b>
				REV. <b>A1</b>

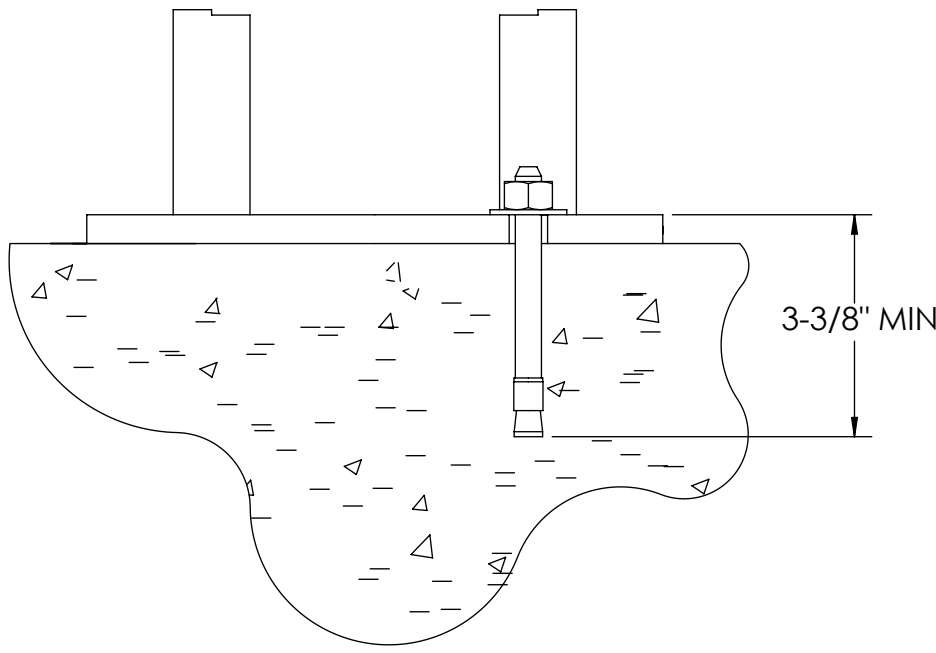
CONCRETE SCHEDULE			
		VOLUME (CUBIC YARDS)	
APPROACHES		9.6	
FLOOR		37.7	
TOTAL		47.3	
MISC. STEEL			
PIT COPING	3 X 3 X 1/4	25 LN. FT	123 LBS

REVISION				
REV	ECO	DESCRIPTION	INIT	DATE

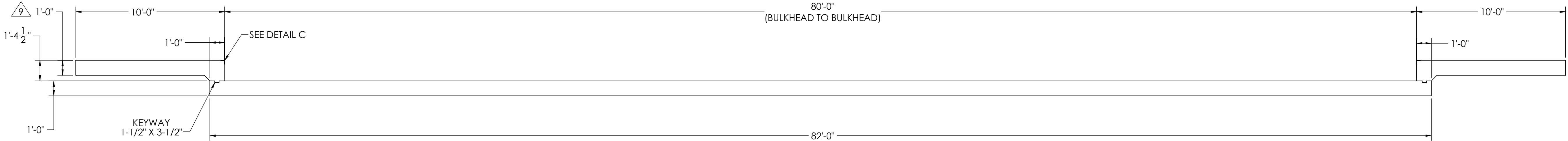
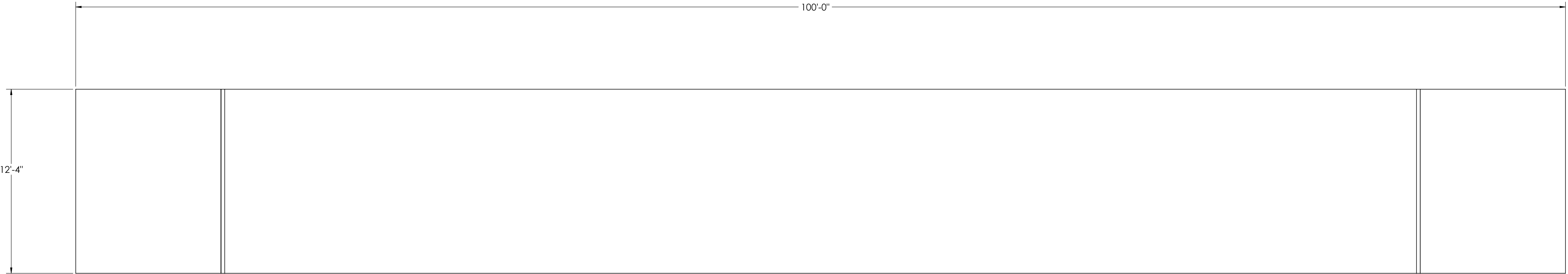
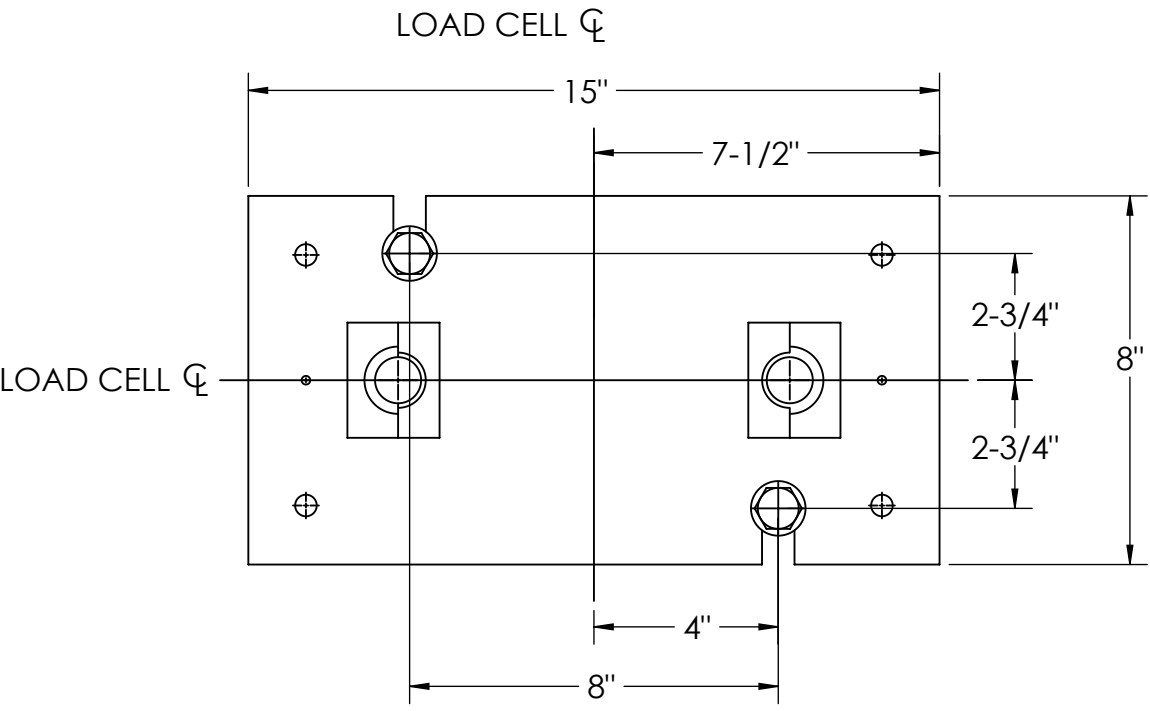
# CONCRETE LAYOUT






## DETAIL C



## DETAIL D



DATES/DATE S. JOHNSON 02/17/2017		DRAWN BY S. JOHNSON 02/17/2017		REVISION/DATE S. JOHNSON 09/28/2017			
TREATMENT  NONE		THIS DRAWING AND INFORMATION CONTAINED HEREIN IS AND REMAINS THE PROPERTY OF RICE LAKE WEIGHING SYSTEMS INC., HEREINAFTER REFERRED TO AS RLWS. IT MAY BE USED ONLY FOR RLWS' PROPOSAL, AND/OR ITS CUSTOMER'S REQUEST. IT SHALL NOT BE REPRODUCED OR COPIED WITHOUT RLWS' SPECIFIC WRITTEN CONSENT AND SHALL BE IMMEDIATELY RETURNED (UPON REQUEST).		UNLESS OTHERWISE SPECIFIED ALL THREADS TO BE CLASS 2 ALL DIMENSIONS APPLICABLE AFTER TREATMENT		FOUNDATION, CONCRETE SLAB 80' x 12' OTR SERIES TRUCK SCALE	
NUMBER OF CRANES  MINIMUM CRANE CAPACITY  (ESTIMATED WEIGHT POINTS)		 DO NOT SCALE DRAWING SURFACE FINISH ✓ ANGLE: ±		TOLERANCES UNLESS OTHERWISE SPECIFIED .XX; ± .XXX; ± ANGLE: ±		DESCRIPTION  SCALE: 1:45 SHEET 2 OF 3 MATERIAL BEND ANGLE PROJECTION  P/N 180307 REV A1	

