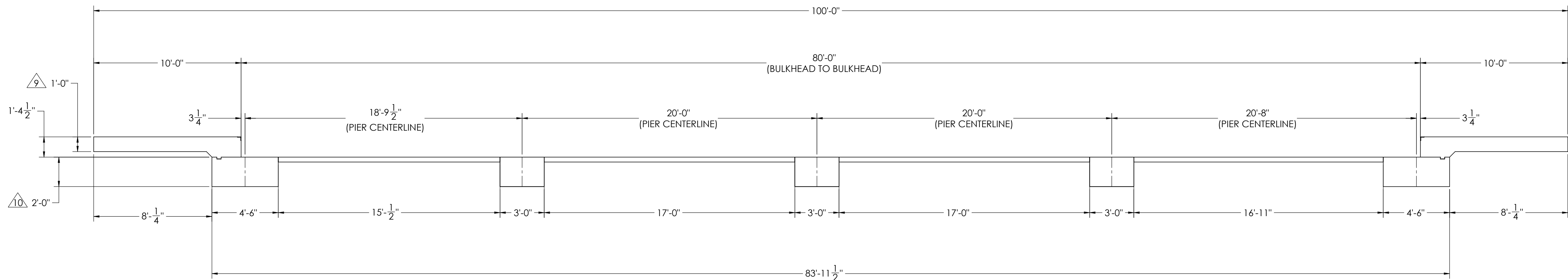
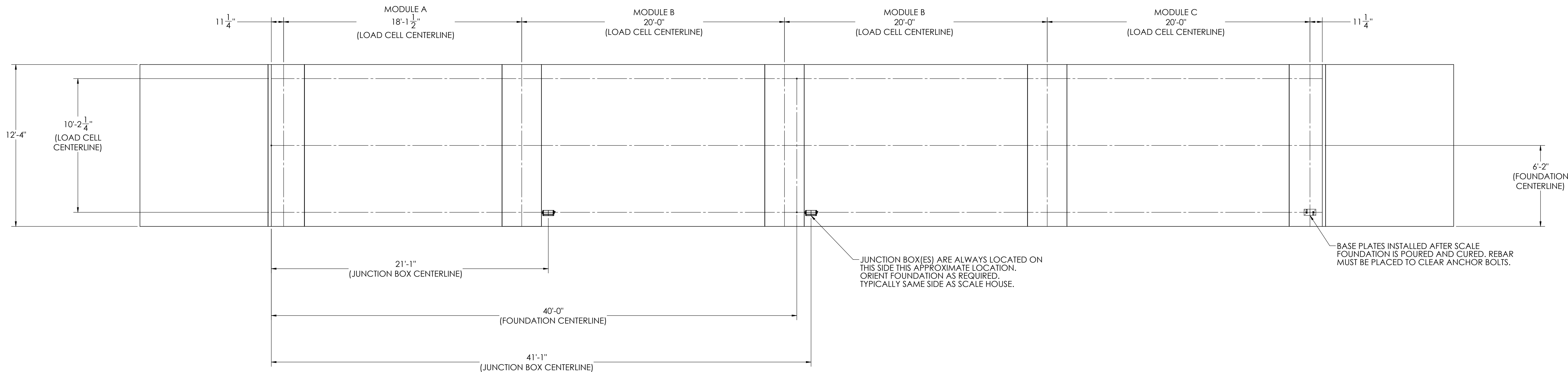


# DETAILS

REVISION				
REV.	ECO	DESCRIPTION	INIT	DATE
A		ENGINEERING RELEASE	SPJ	02/24/2017








NOTES:

- 1) CONCRETE: F<sub>C</sub> = 3000 PSI @ 28 DAYS.
- 2) REINFORCING STEEL: DEFORMED BARS ASTM A615 GRADE 60.
- 3) STATE AND LOCAL AGENCIES MAY HAVE VARIOUS REQUIREMENTS FOR APPROACH RAMP LENGTH, PITCH, AND FOR CLEAN OUT HEIGHT. PLEASE CHECK WITH ALL AGENCIES PRIOR TO CONSTRUCTION.
- 4) MONOLITHIC POUR IS ALLOWED AT CONTRACTOR'S DISCRETION.
- 5) DEVELOP AND MAINTAIN SITE GRADES WHICH WILL RAPIDLY DRAIN SURFACE AND ROOF RUN-OFF AWAY FROM FOUNDATION.
- 6) FOOTINGS HAVE BEEN DESIGNED FOR A MINIMUM SOIL PRESSURE OF 2500 PSF; IT WILL BE THE RESPONSIBILITY OF OTHERS TO VERIFY THIS VALUE.
- 7) WHERE REINFORCING BARS ARE SHOWN CONTINUOUS, LAP SPlice BARS 40 DIAMETERS
- 8) APPROACHES TO BE A COMMON PLANE WITHIN 1/4".

9. APPROACH THICKNESS MAY BE 10" MINIMUM WHERE ALLOWED BY STATE REGULATIONS.

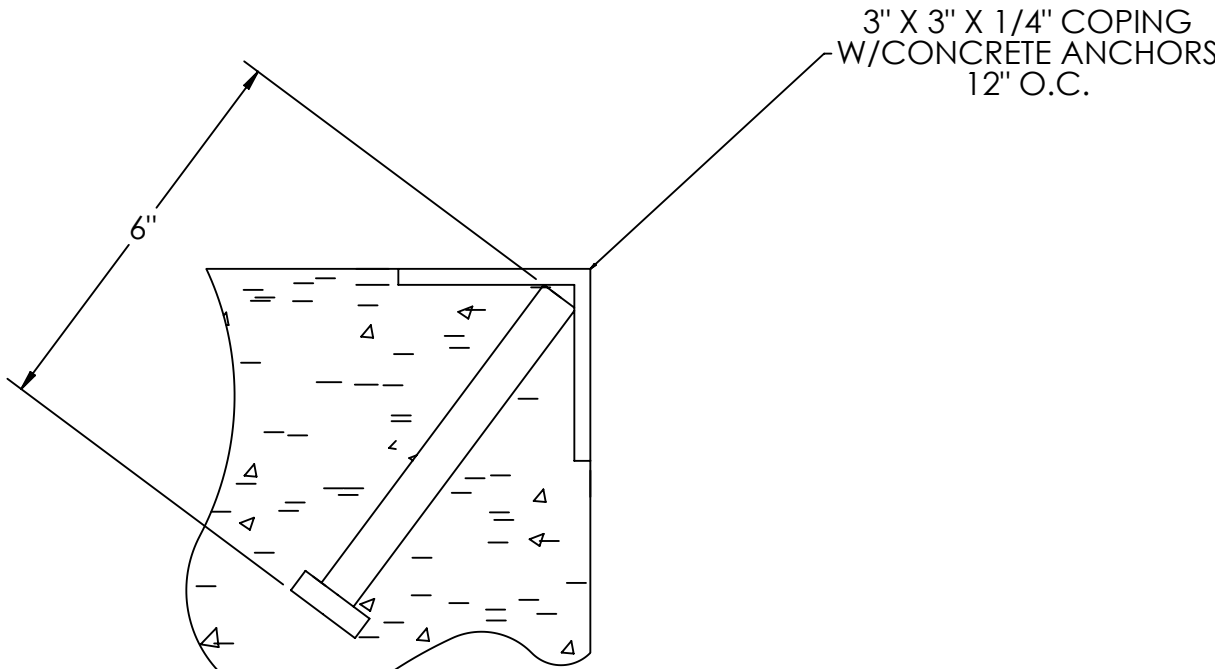
10. FOUNDATION MUST EXTEND A MINIMUM OF 12" BELOW THE FROST PENETRATION LINE

(ISSUED BY DATE) <b>S. JOHNSON</b> 03/24/2017		(DRAWN BY DATE) <b>S. JOHNSON</b> 03/24/2017		(FIELD PROPOSAL DATE) <b>S. JOHNSON</b> 03/27/2017			
(TREATMENT) <b>NONE</b>		THIS DRAWING AND INFORMATION CONTAINED HEREIN IS AND REMAINS THE PROPERTY OF RICE LAKE WEIGHING SYSTEMS, INC. HEREINAFTER REFERRED TO AS "RICE LAKE". IT IS TO BE USED ONLY FOR THE PURPOSES, PROPOSAL AND/OR USE ITS CUSTOMER'S COMPANY. IT SHALL NOT BE REPRODUCED OR COPIED WITHOUT RICE SPECIFIC WRITTEN CONSENT AND SHALL BE IMMEDIATELY RETURNED UPON REQUEST.		UNLESS OTHERWISE SPECIFIED UNITS SHALL BE INCHES ALL THREADS TO BE CLASS 2 ALL DIMENSIONS APPLICABLE AFTER TREATMENT		<b>RICE LAKE</b> <b>WEIGHING SYSTEMS</b>	
(NUMBER OF CRANES) 		(TOLERANCE) DO NOT SCALE DRAWING SURFACE FINISH .XX: ± .XXX: ± ✓ ANGLE: ±		(DESCRIPTION) <b>FOUNDATION, CONCRETE PIER 80' X 12'</b> <b>OTR SERIES TRUCK SCALE</b>			
(MINIMUM CRANE CAPACITY) 		(DRAWING TOLERANCES) UNLESS OTHERWISE SPECIFIED .XX: ± .XXX: ± ✓ ANGLE: ±		(SCALE) 1:45		(SHEET) 1 OF 3	
(ESTIMATED WEIGHT POUNDS) 				(THIRD ANGLE PROJECTION) 		(P/N) <b>180309</b>	
						(REV) <b>A</b>	

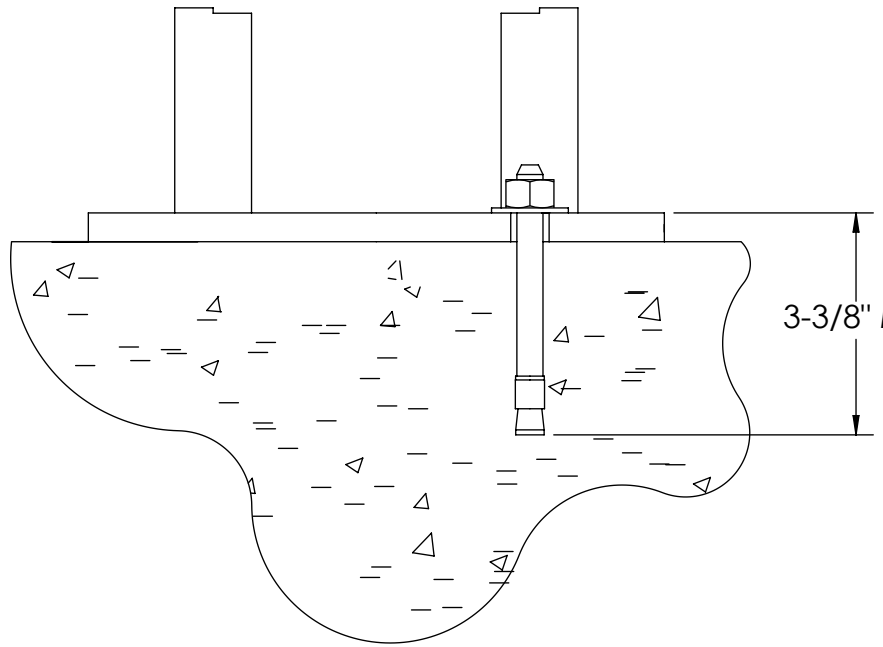
CONCRETE SCHEDULE			
		VOLUME (CUBIC YARDS)	
APPROACHES		9.9	
CLEANOUT		10.0	
PIERS		16.5	
TOTAL		36.4	
MISC. STEEL			
PIT COPING	3 X 3 X 1/4	25 LN. FT	123 LBS

VOLUME SHOWN FOR STATED PIER DEPTH.  
ADD ADDITIONAL CONCRETE FOR  
DEEPER PIERS AS NEEDED.

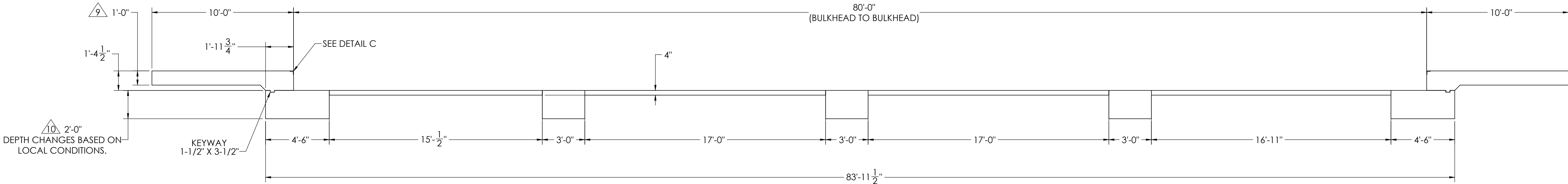
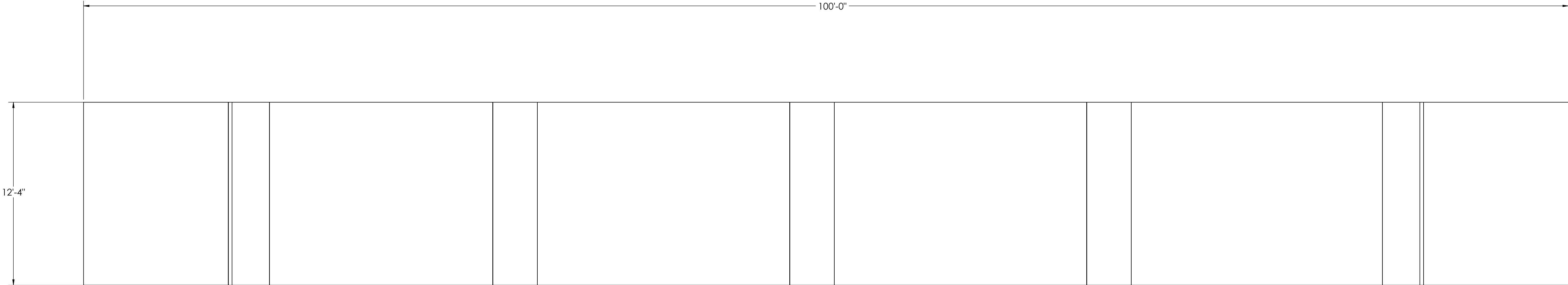
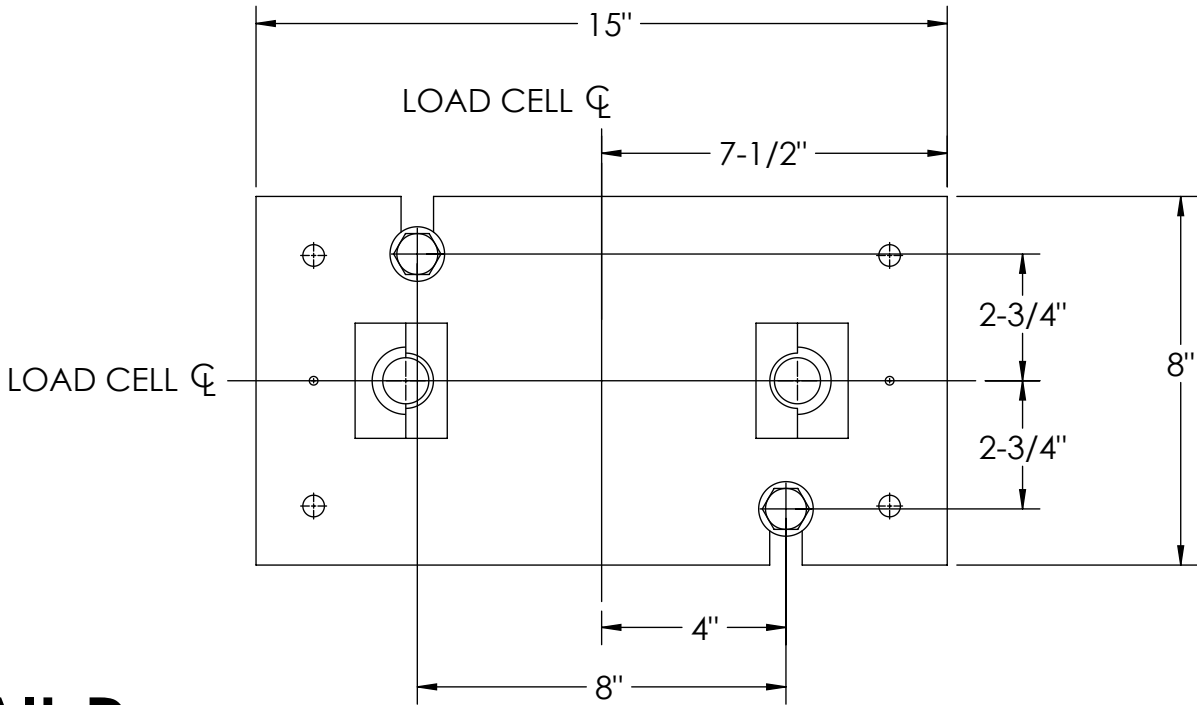
## CONCRETE LAYOUT



DETAIL C



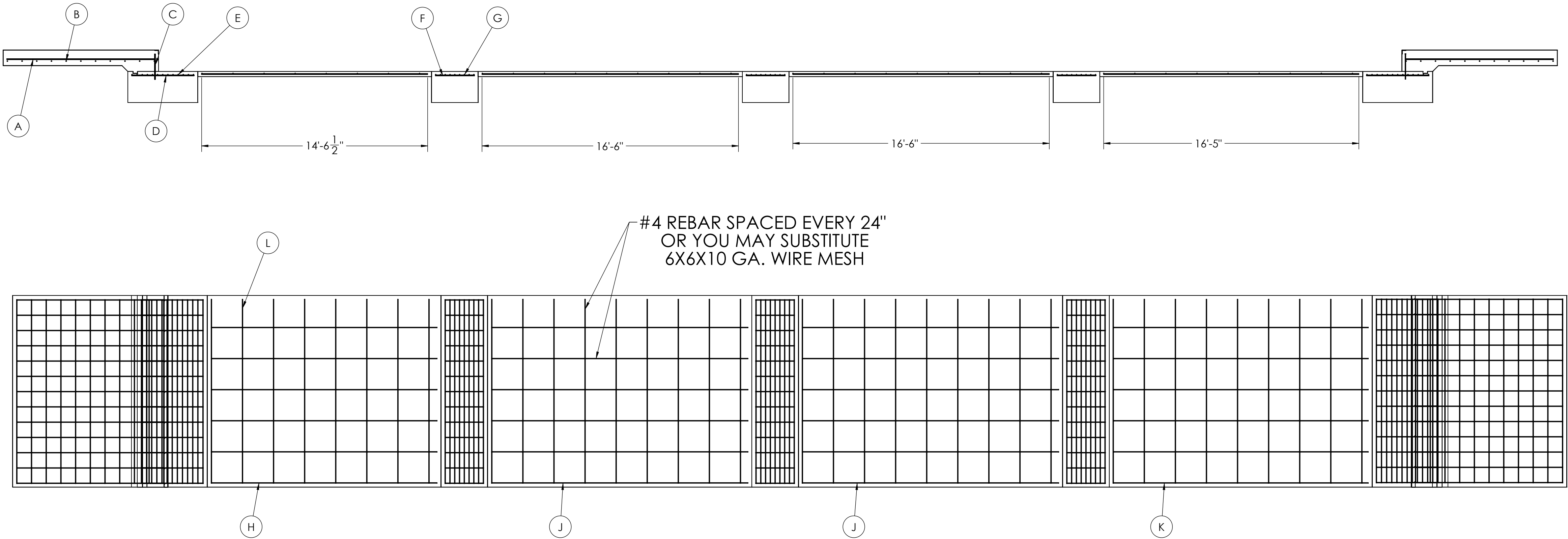
DETAIL D



DESIGNED BY: J. JOHNSON 03/24/2017	DRAWN BY: J. JOHNSON 03/24/2017	PIER APPROVAL: J. JOHNSON 03/27/2017	<b>RICE LAKE</b> WEIGHING SYSTEMS	
TREATMENT  NONE	THIS DRAWING AND INFORMATION CONTAINED HEREIN IS AND REMAINS THE PROPERTY OF RICE LAKE WEIGHING SYSTEMS INC. - HEREINAFTER REFERRED TO AS RLWS. IT MAY BE USED ONLY FOR RLWS' PROPOSAL AND/OR ITS CUSTOMER'S ORDERS. IT SHALL NOT BE DISCLOSED OR COPIED WITHOUT RLWS' SPECIFIC WRITTEN CONSENT AND SHALL BE IMMEDIATELY RETURNED UPON REQUEST.	UNLESS OTHERWISE SPECIFIED UNITS TO BE INCHES ALL THREADS TO BE CLASS 2 ALL DIMENSIONS APPLICABLE AFTER TREATMENT	DESCRIPTION FOUNDATION, CONCRETE PIER 80' X 12' OTR SERIES TRUCK SCALE	
NUMBER OF CRANES: MINIMUM CRANE CAPACITY: ESTIMATED WEIGHT (POUNDS)	DO NOT SCALE DRAWING SURFACE FINISH ✓	TOLERANCES DRAWING TOLERANCES UNLESS OTHERWISE SPECIFIED .XX: .XXX: ANGLE:	SCALE 1:45	SHEET 2 OF 3
THIRD ANGLE PROJECTION			180309	REV A

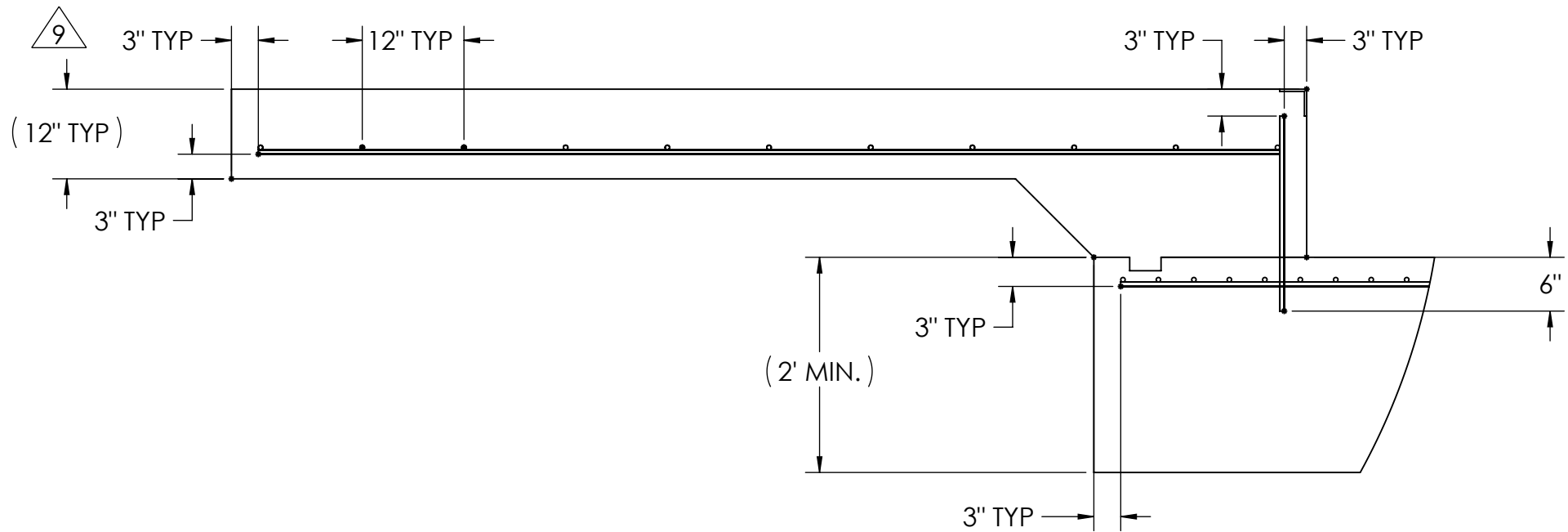
MATERIAL REQUIREMENTS					
REBAR SCHEDULE					
BAL. NO.	QUANTITY	LENGTH (FT-IN.)	DESCRIPTION	WEIGHT	
A	26	9' 6"	# 4 @ 12 O.C.	165	
B	22	12' 4"	# 4 @ 12 O.C.	181	
C	26	1' 7 1/2"	# 4 @ 12 O.C.	28	
D	26	4' 0"	# 4 @ 12 O.C.	69	
E	22	12' 4"	# 4 @ 4 O.C.	181	
F	39	2' 6"	# 4 @ 12 O.C.	65	
G	27	12' 4"	# 4 @ 4 O.C.	222	
CLEANOUT SCHEDULE					
H	6	14' 6 1/2"	# 4 @ 24 O.C.	58	
J	12	16' 6"	# 4 @ 24 O.C.	132	
K	6	16' 5"	# 4 @ 24 O.C.	66	
L	35	11' 10"	# 4 @ 24 O.C.	277	
TOTAL WEIGHT OF REBAR (LBS.)				1446	
TOTAL LENGTH OF REBAR (FT.)				2164	
WIRE MESH		6 X 6-10 GA.		747	SQ FT

# REBAR LAYOUT

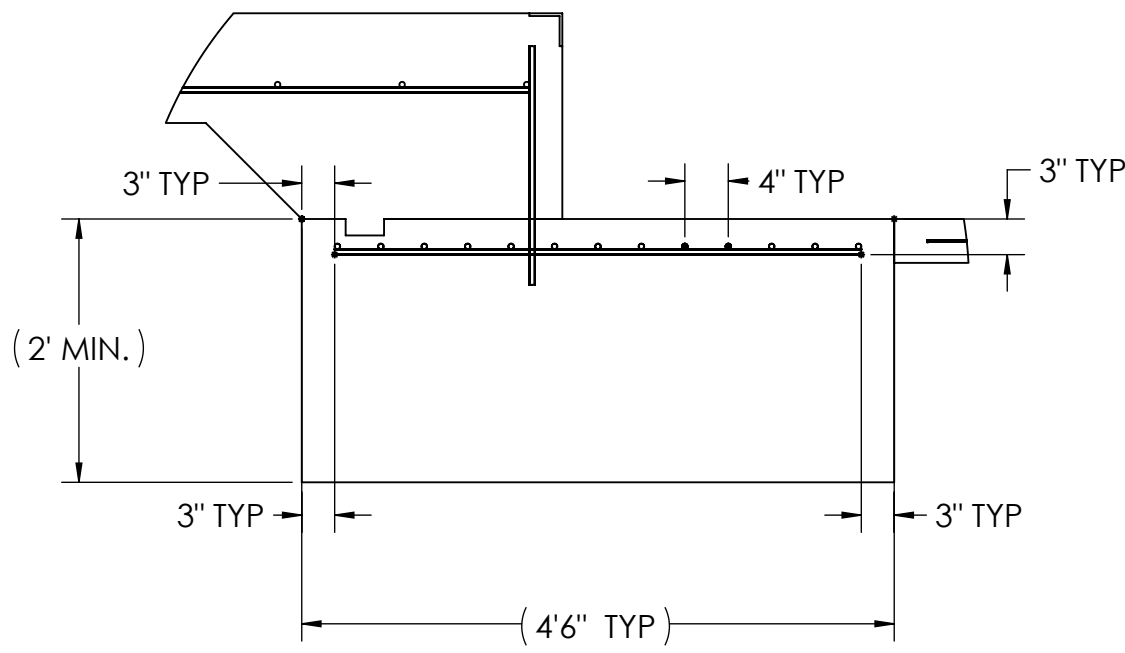


## APPROACH STANDARD VIEWS

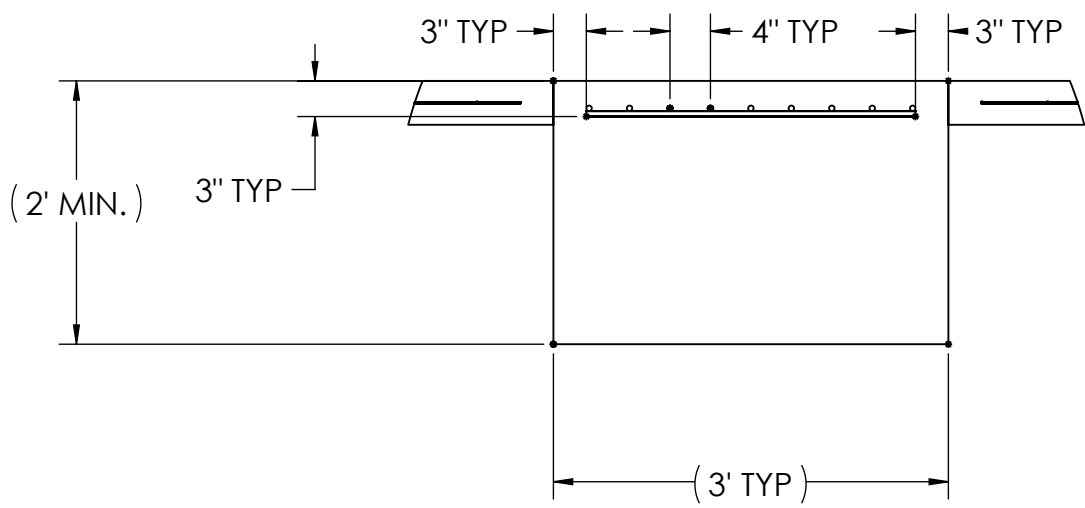
**NOTES:** 1) LEFT AND RIGHT APPROACHES ARE MIRROR IMAGES OF EACH OTHER AND CONTAIN AN IDENTICAL PART LIST






## APPROACH PIER STANDARD VIEWS



## PIER STANDARD VIEWS



DESIGNED BY DATE S. JOHNSON 03/24/2017		DRAWN BY DATE S. JOHNSON 03/24/2017		FIELD APPROVAL DATE S. JOHNSON 03/27/2017			
TREATMENT  NONE		THIS DRAWING AND INFORMATION CONTAINED HEREIN IS AND REMAINS THE PROPERTY OF RICE LAKE WEIGHING SYSTEMS INC. HEREINAFTER REFERRED TO AS RICE LAKE. IT MAY BE USED FOR THE RUMS' PROPOSAL AND/OR ITS CUSTOMER'S PURPOSES. IT SHALL NOT BE REPRODUCED OR COPIED WITHOUT RICE LAKE'S WRITTEN CONSENT AND SHALL BE IMMEDIATELY RETURNED UPON REQUEST.		UNLESS OTHERWISE SPECIFIED, UNITS TO BE IN INCHES. ALL THREADS TO BE CLASS 2 ALL DIMENSIONS APPLICABLE AFTER TREATMENT			
NUMBER OF CRANES  MINIMUM CRANE CAPACITY  (ESTIMATED WEIGHT POINTS)		 DO NOT SCALE DRAWING SURFACE FINISH ✓ ANGLE: ±		TOLERANCES DRAWING TOLERANCES UNLESS OTHERWISE SPECIFIED .XX; ± .XXX; ± ANGLE: ±		DESCRIPTION FOUNDATION, CONCRETE PIER 80' x 12' OTR SERIES TRUCK SCALE	
				SCALE 1:48		SHEET 3 OF 3	
				BIRD ANGLE PROJECTION 		MATERIAL 180309	
				P/N 180309		REV A	