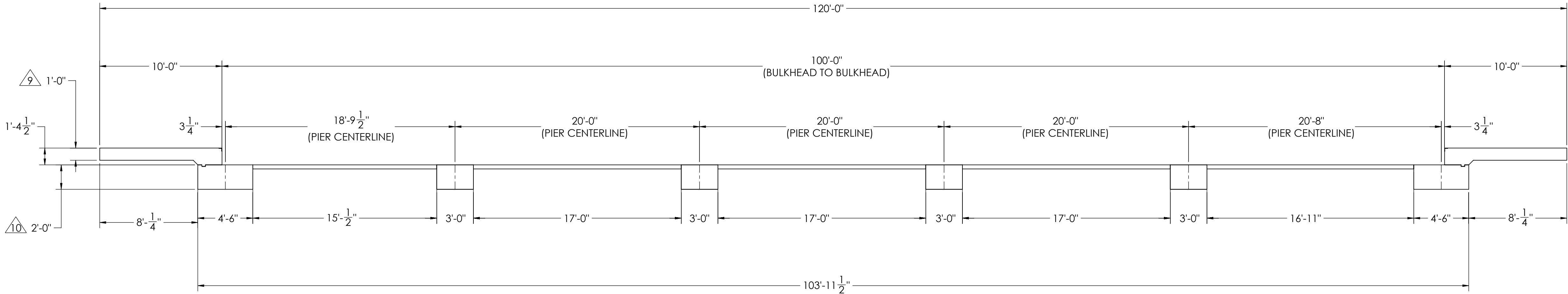
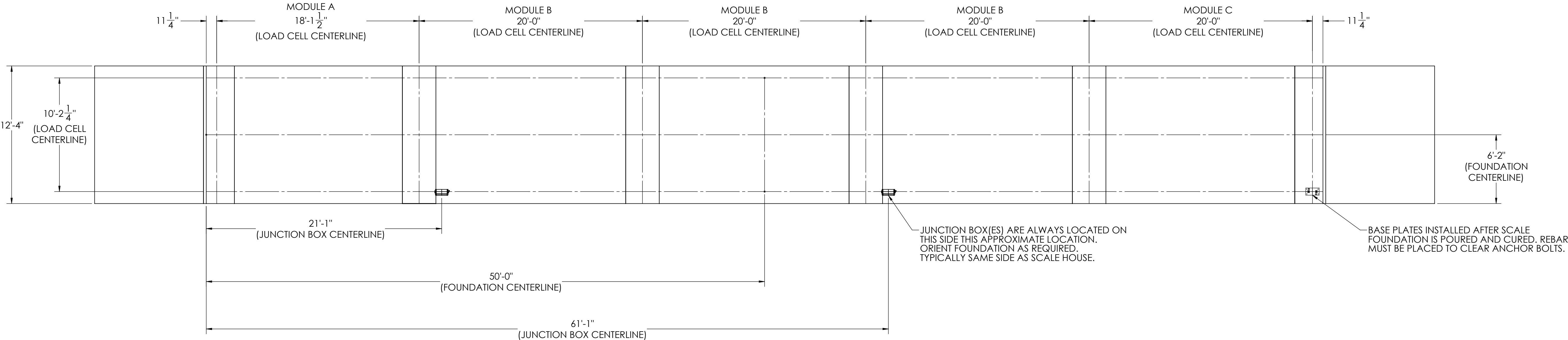


DETAILS

| | | REVISION | | |
|------|-----|---------------------|------|------------|
| REV. | ECO | DESCRIPTION | INIT | DATE |
| A | | ENGINEERING RELEASE | SPJ | 11/22/2016 |



NOTES:

- 1) CONCRETE: f'c = 3000 PSI @ 28 DAYS.
- 2) REINFORCING STEEL: DEFORMED BARS ASTM A615 GRADE 60.
- 3) STATE AND LOCAL AGENCIES MAY HAVE VARIOUS REQUIREMENTS FOR APPROACH RAMP LENGTH, PITCH, AND FOR CLEAN OUT HEIGHT. PLEASE CHECK WITH ALL AGENCIES PRIOR TO CONSTRUCTION.
- 4) MONOLITHIC POUR IS ALLOWED AT CONTRACTOR'S DISCRETION.
- 5) DEVELOP AND MAINTAIN SITE GRADES WHICH WILL RAPIDLY DRAIN SURFACE AND ROOF RUN-OFF AWAY FROM FOUNDATION.
- 6) FOOTINGS HAVE BEEN DESIGNED FOR A MINIMUM SOIL PRESSURE OF 2500 PSF. IT WILL BE THE RESPONSIBILITY OF OTHERS TO VERIFY THIS VALUE.
- 7) WHERE REINFORCING BARS ARE SHOWN CONTINUOUS, LAP SPLICE BARS 40 DIAMETERS.
- 8) APPROACHES TO BE A COMMON PLANE WITHIN 1/4".

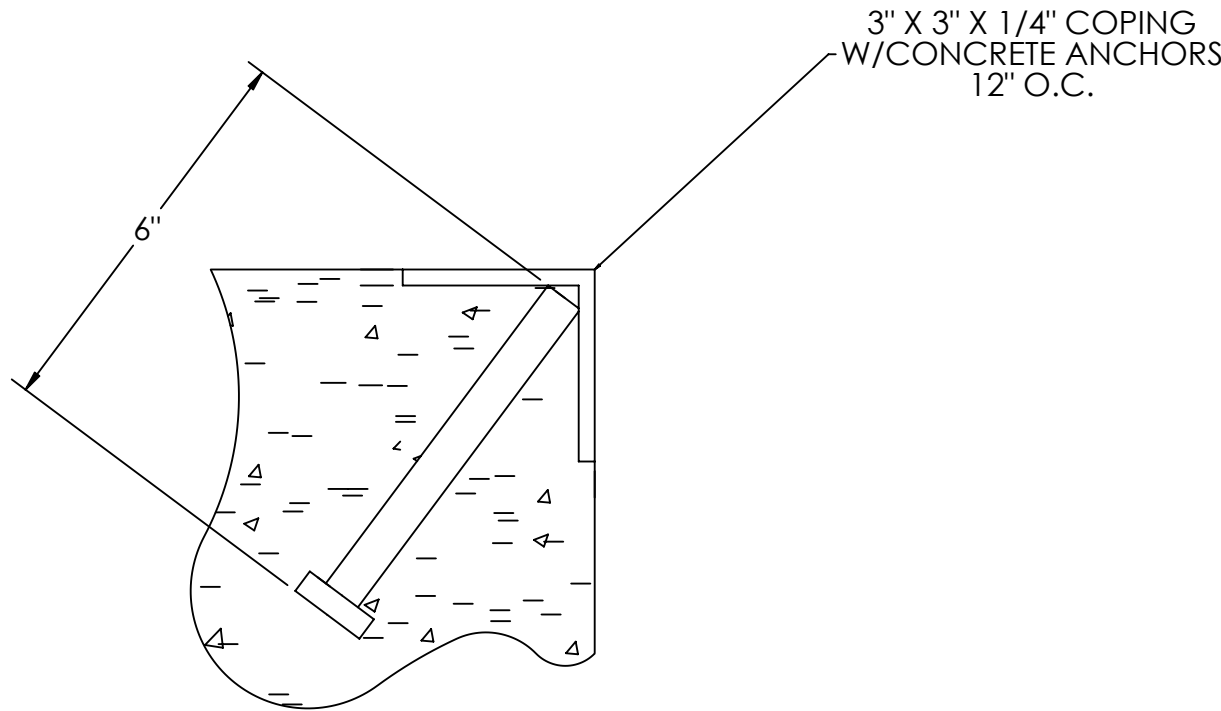
APPROACH THICKNESS MAY BE 10" MINIMUM WHERE ALLOWED BY STATE REGULATIONS

FOUNDATION MUST EXTEND A MINIMUM OF 12" BELOW THE FROST PENETRATION LINE

| | | | | | | |
|--|--|--|--|---|-----------------|-----------|
| DESIGNED BY DATE S. JOHNSON 02/24/2017 | | DRAWN BY DATE S. JOHNSON 02/24/2017 | | PIER APPROVAL DATE ERROR! DesEng ERROR! DesEngDate | | |
| TREATMENT NONE | | THIS DRAWING AND INFORMATION CONTAINED HEREIN IS AND REMAINS THE PROPERTY OF RICE LAKE WEIGHING SYSTEMS INC. HEREINAFTER REFERRED TO AS RLWS. IT MAY BE USED ONLY FOR RLWS' PROPOSAL AND/OR ITS CUSTOMER'S ORDERS. IT SHALL NOT BE DISCLOSED OR COPIED WITHOUT RLWS SPECIFIC WRITTEN CONSENT AND SHALL BE IMMEDIATELY RETURNED UPON REQUEST. | | UNLESS OTHERWISE SPECIFIED UNITS TO BE INCHES ALL THREADS TO BE CLASS 2 ALL DIMENSIONS APPLICABLE AFTER TREATMENT | | |
| NUMBER OF CRANES: | | TOLERANCES DRAWING TOLERANCES UNLESS OTHERWISE SPECIFIED SURFACE FINISH ANGLE: ± | | DESCRIPTION FOUNDATION, CONCRETE PIER 100' X 12' OTR SERIES TRUCK SCALE | | |
| MINIMUM CRANE CAPACITY: | | DO NOT SCALE DRAWING SURFACE FINISH ANGLE: ± | | SCALE 1:60 | SHEET 1 OF 3 | MATERIAL |
| ESTIMATED WEIGHT (POUNDS) | | THIRD ANGLE PROJECTION | | 180327 | | REV A1 |

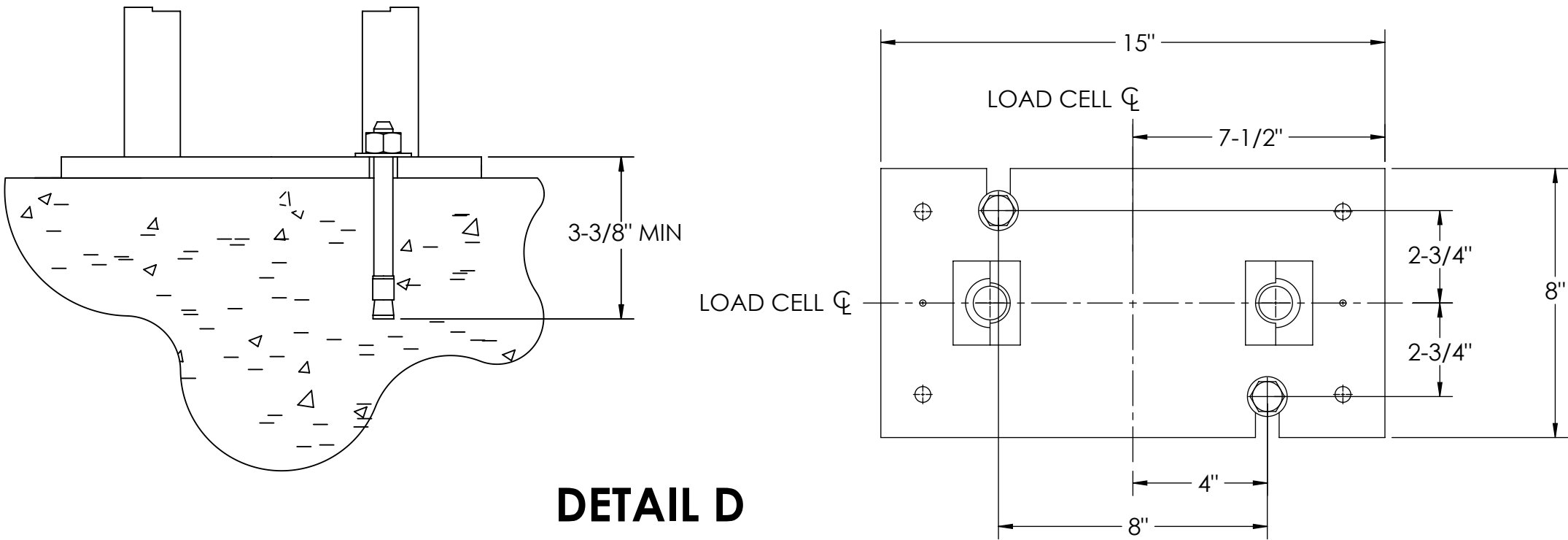
| CONCRETE SCHEDULE | | | |
|-------------------|-------------|----------------------|---------|
| | | VOLUME (CUBIC YARDS) | |
| APPROACHES | | 9.9 | |
| CLEANOUT | | 12.7 | |
| PIERS | | 19.2 | |
| TOTAL | | 41.8 | |
| | | | |
| MISC. STEEL | | | |
| PIT COPING | 3 X 3 X 1/4 | 25 LN. FT | 123 LBS |

VOLUME SHOWN FOR STATED PIER DEPTH.
ADD ADDITIONAL CONCRETE FOR
DEEPER PIERS AS NEEDED.

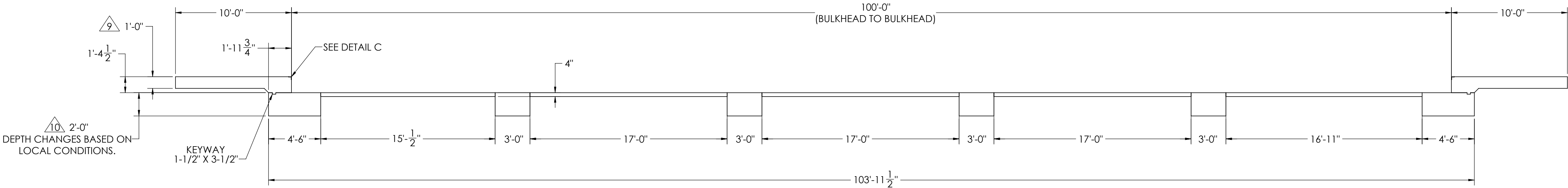
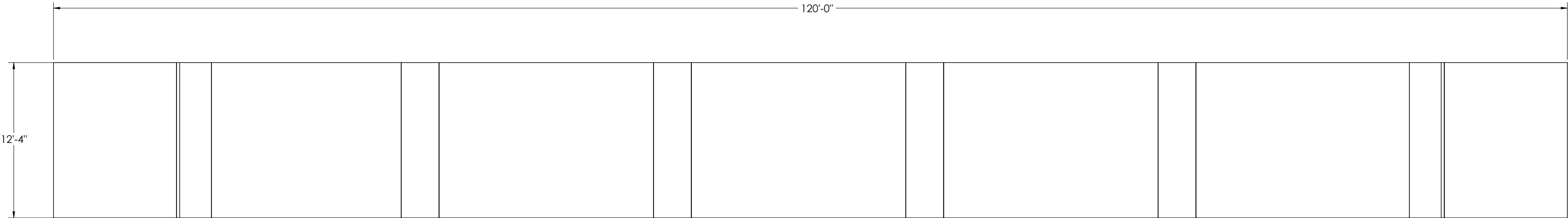


DETAIL C

CONCRETE LAYOUT

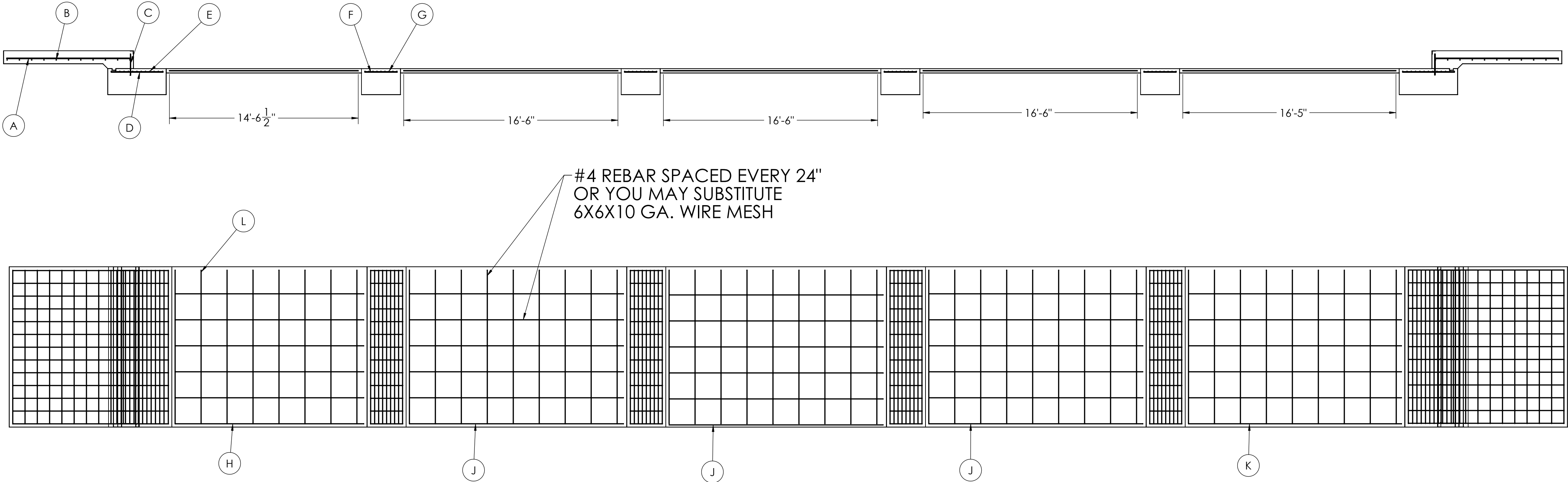


DETAIL D



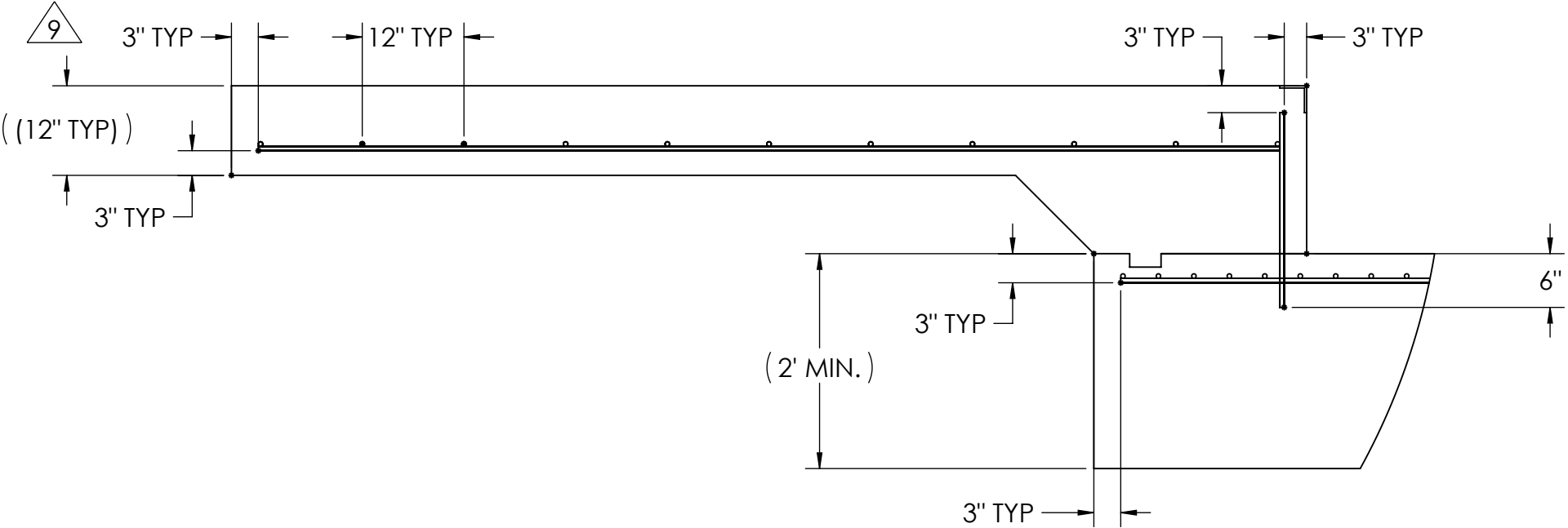
| | | | | |
|---|---|---|---|-----------------|
| DESIGNED BY: J.OHNS S.JOHNSON 02/24/2017 | DRAWN BY: J.OHNS S.JOHNSON 02/24/2017 | PIER APPROVAL: DATE ERROR!DesEng ERROR!DesEngDate | RICE LAKE WEIGHING SYSTEMS | |
| TREATMENT NONE | THIS DRAWING AND INFORMATION CONTAINED HEREIN IS AND REMAINS THE PROPERTY OF RICE LAKE WEIGHING SYSTEMS INC. - HEREINAFTER REFERRED TO AS RLWS. IT MAY BE USED ONLY FOR RLWS' PROPOSAL AND/OR ITS CUSTOMER'S ORDERS. IT SHALL NOT BE DISCLOSED OR COPIED WITHOUT RLWS SPECIFIC WRITTEN CONSENT AND SHALL BE IMMEDIATELY RETURNED UPON REQUEST. | UNLESS OTHERWISE SPECIFIED UNITS TO BE INCHES ALL THREADS TO BE CLASS 2 ALL DIMENSIONS APPLICABLE AFTER TREATMENT | DESCRIPTION FOUNDATION, CONCRETE PIER 100' X 12' OTR SERIES TRUCK SCALE | |
| NUMBER OF CRANES: MINIMUM CRANE CAPACITY: ESTIMATED WEIGHT (POUNDS) | DO NOT SCALE DRAWING SURFACE FINISH ✓ | TOLERANCES DRAWING TOLERANCES UNLESS OTHERWISE SPECIFIED .XX: .XXX: ANGLE: | SCALE 1:60 | SHEET 2 OF 3 |
| | | THIRD ANGLE PROJECTION FPM | 180327 | |
| | | REV A1 | | |

| MATERIAL REQUIREMENTS | | | | |
|------------------------------|----------|-----------------|---------------|--------|
| REBAR SCHEDULE | | | | |
| BAL. NO. | QUANTITY | LENGTH (FT-IN.) | DESCRIPTION | WEIGHT |
| A | 26 | 9' 6" | # 4 @ 12 O.C. | 165 |
| B | 22 | 12' 4" | # 4 @ 12 O.C. | 181 |
| C | 26 | 1' 7 1/2" | # 4 @ 12 O.C. | 28 |
| D | 26 | 4' 0" | # 4 @ 12 O.C. | 69 |
| E | 26 | 12' 4" | # 4 @ 4 O.C. | 214 |
| F | 52 | 2' 6" | # 4 @ 12 O.C. | 87 |
| G | 36 | 12' 4" | # 4 @ 4 O.C. | 297 |
| CLEANOUT SCHEDULE | | | | |
| H | 6 | 14' 6 1/2" | # 4 @ 24 O.C. | 58 |
| J | 18 | 16' 6" | # 4 @ 24 O.C. | 198 |
| K | 6 | 16' 5" | # 4 @ 24 O.C. | 66 |
| L | 44 | 11' 10" | # 4 @ 24 O.C. | 348 |
| TOTAL WEIGHT OF REBAR (LBS.) | | | | 1712 |
| TOTAL LENGTH OF REBAR (FT.) | | | | 2563 |
| WIRE MESH | | 6 X 6-10 GA. | 1023 SQ FT | |

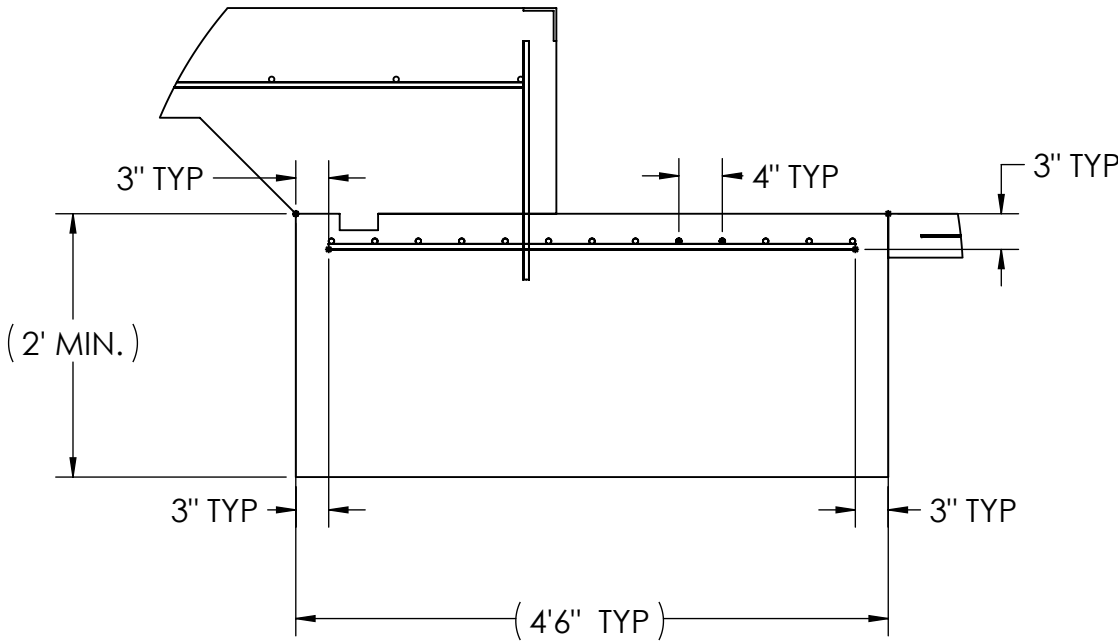


APPROACH STANDARD VIEWS

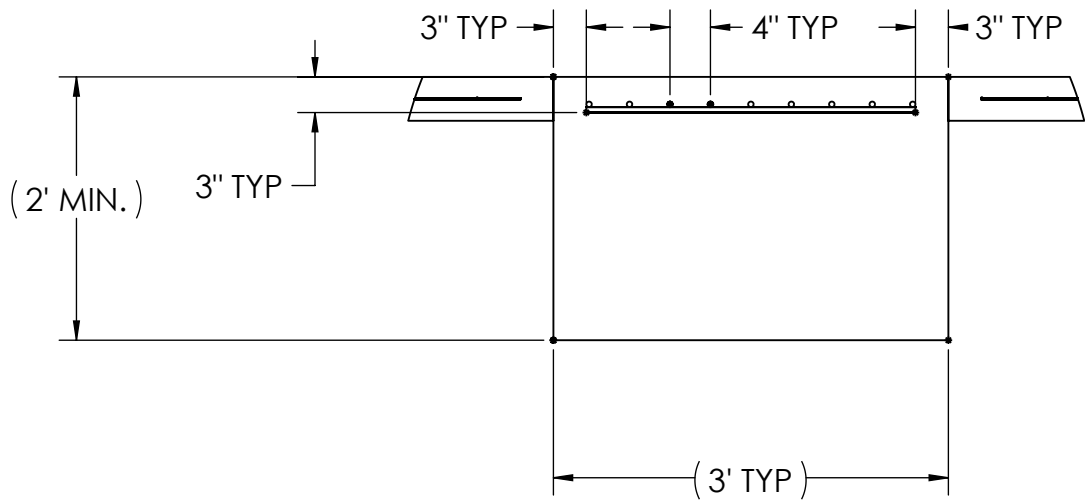
NOTES: LEFT AND RIGHT APPROACHES ARE MIRROR IMAGES OF EACH OTHER AND CONTAIN AN IDENTICAL PART LIST



APPROACH PIER STANDARD VIEWS



PIER STANDARD VIEWS



| | | | | | | | |
|--|--|---|--|---|--|--|--|
| DESIGNED BY: J.O.H. S. JOHNSON 02/24/2017 | | DRAWN BY: J.O.H. S. JOHNSON 02/24/2017 | | PIER APPROVAL: DATE ERROR! DesEng ERROR! DesEngDate | | RICE LAKE WEIGHING SYSTEMS | |
| TREATMENT NONE | | THIS DRAWING AND INFORMATION CONTAINED HEREIN IS AND REMAINS THE PROPERTY OF RICE LAKE WEIGHING SYSTEMS INC. - HEREINAFTER REFERRED TO AS RLWS. IT MAY BE USED ONLY FOR RLWS' PROPOSAL AND/OR ITS CUSTOMER'S ORDERS. IT SHALL NOT BE DISCLOSED OR COPIED WITHOUT RLWS' SPECIFIC WRITTEN CONSENT AND SHALL BE IMMEDIATELY RETURNED UPON REQUEST. | | UNLESS OTHERWISE SPECIFIED UNITS TO BE INCHES ALL THREADS TO BE CLASS 2 ALL DIMENSIONS APPLICABLE AFTER TREATMENT | | DESCRIPTION FOUNDATION, CONCRETE PIER 100' X 12' OTR SERIES TRUCK SCALE | |
| NUMBER OF CRANES: MINIMUM CRANE CAPACITY: ESTIMATED WEIGHT (POUNDS): | | DO NOT SCALE DRAWING SURFACE FINISH TOLERANCES UNLESS OTHERWISE SPECIFIED .XX: ± .XXX: ± ANGLE: ± | | SCALE 1:48 SHEET 3 OF 3 MATERIAL | | THIRD ANGLE PROJECTION 180327 REV A1 | |