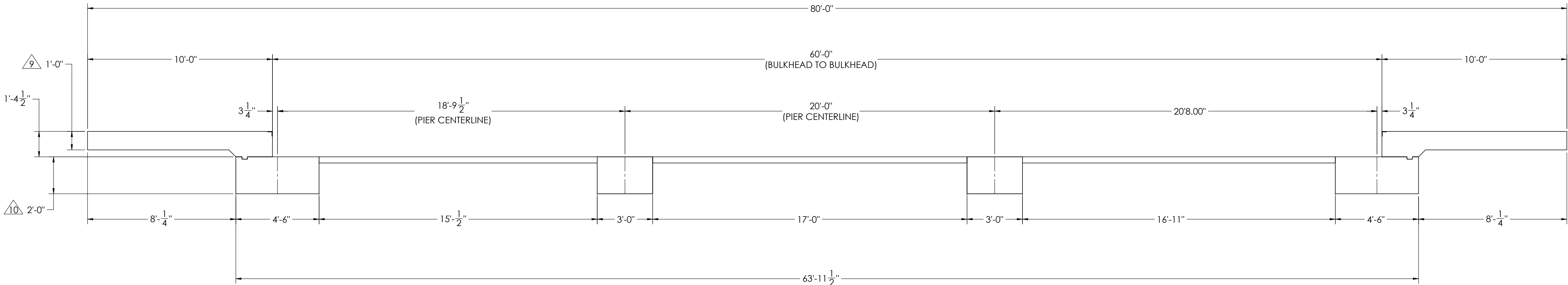
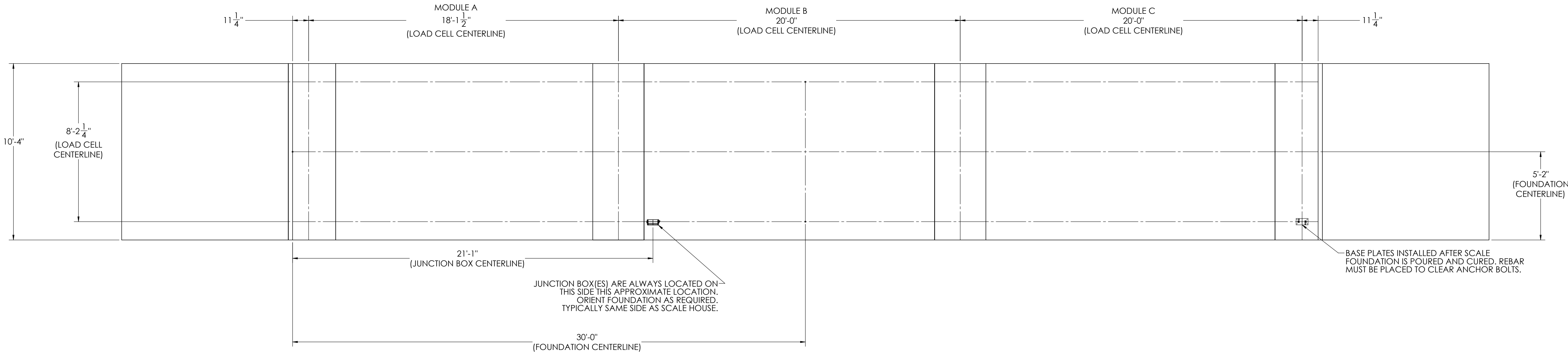


DETAILS



REVISION				
REV.	ECO	DESCRIPTION	INIT	DATE
A		ENGINEERING RELEASE	SPJ	02/22/2017



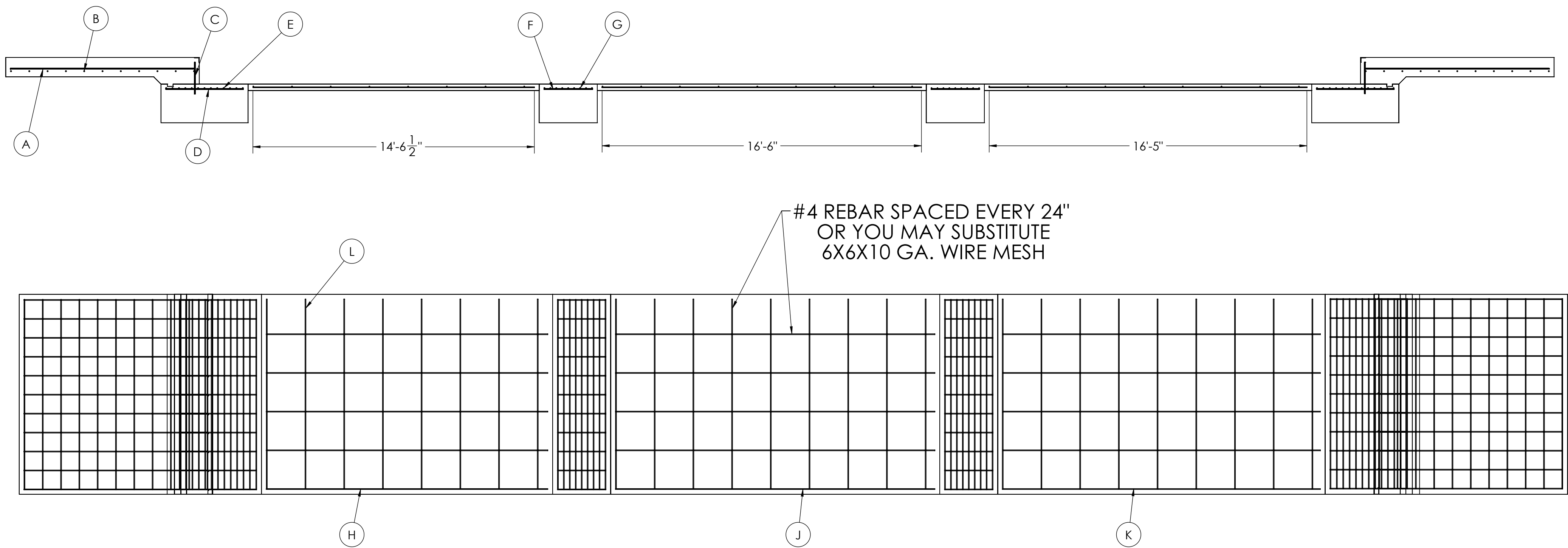
NOTES:

- 1) CONCRETE: f_c = 3000 PSI @ 28 DAYS.
- 2) REINFORCING STEEL: DEFORMED BARS ASTM A615 GRADE 60.
- 3) STATE AND LOCAL AGENCIES MAY HAVE VARIOUS REQUIREMENTS FOR APPROACH RAMP LENGTH, PITCH, AND FOR CLEAN OUT HEIGHT. PLEASE CHECK WITH ALL AGENCIES PRIOR TO CONSTRUCTION.
- 4) MONOLITHIC POUR IS ALLOWED AT CONTRACTOR'S DISCRETION.
- 5) DEVELOP AND MAINTAIN SITE GRADES WHICH WILL RAPIDLY DRAIN SURFACE AND ROOF RUN-OFF AWAY FROM FOUNDATION.
- 6) FOOTINGS HAVE BEEN DESIGNED FOR A MINIMUM SOIL PRESSURE OF 2500 PSF. IT WILL BE THE RESPONSIBILITY OF OTHERS TO VERIFY THIS VALUE.
- 7) WHERE REINFORCING BARS ARE SHOWN CONTINUOUS, LAP SPLICE BARS 40 DIAMETERS.
- 8) APPROACHES TO BE A COMMON PLANE WITHIN 1/4".

- △ APPROACH THICKNESS MAY BE 10" MINIMUM WHERE ALLOWED BY STATE REGULATIONS
- △ FOUNDATION MUST EXTEND A MINIMUM OF 12" BELOW THE FROST PENETRATION LINE

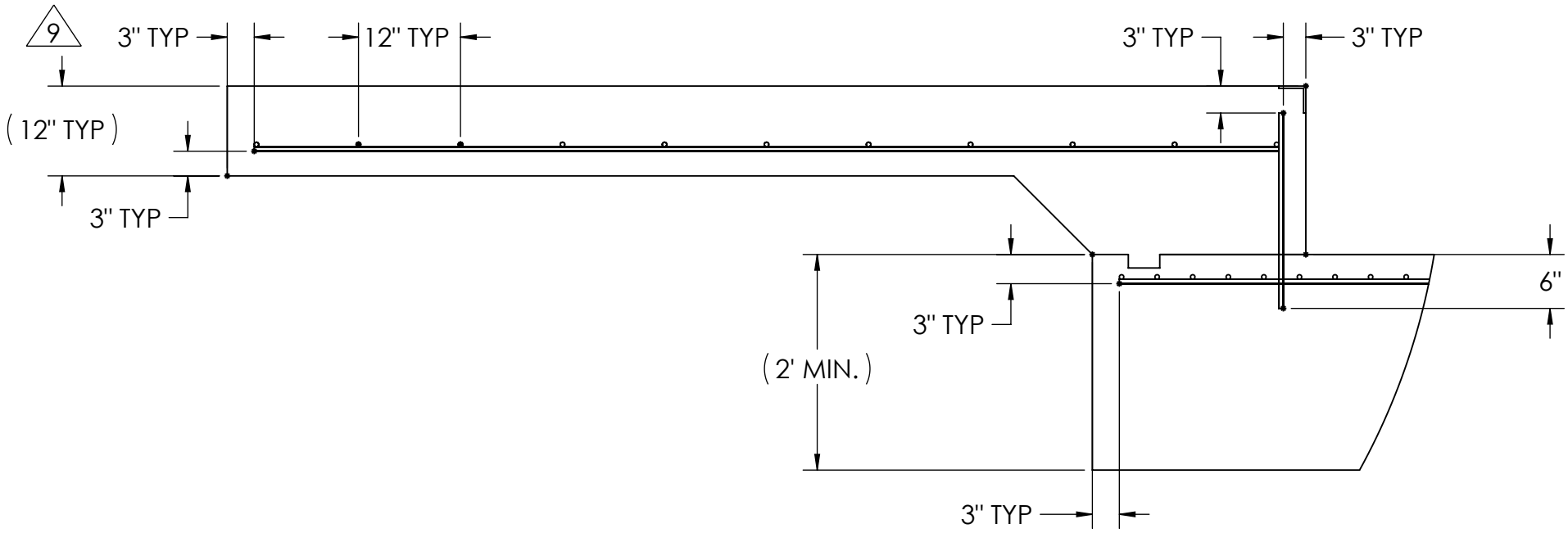
DESIGNED BY DATE S. JOHNSON 02/22/2017		DRAWN BY DATE S. JOHNSON 02/22/2017		PIER APPROVAL DATE S. JOHNSON 03/27/2017		<div><div></div><div>RICE LAKE</div><div>WEIGHING SYSTEMS</div></div>	
TREATMENT NONE		THIS DRAWING AND INFORMATION CONTAINED HEREIN IS AND REMAINS THE PROPERTY OF RICE LAKE WEIGHING SYSTEMS INC. - HEREINAFTER REFERRED TO AS RLWS. IT MAY BE USED ONLY FOR RLWS' PROPOSAL AND/OR ITS CUSTOMER'S ORDERS. IT SHALL NOT BE DISCLOSED OR COPIED WITHOUT RLWS' SPECIFIC WRITTEN CONSENT AND SHALL BE IMMEDIATELY RETURNED UPON REQUEST.		UNLESS OTHERWISE SPECIFIED UNITS TO BE INCHES ALL THREADS TO BE CLASS 2 ALL DIMENSIONS APPLICABLE AFTER TREATMENT			
NUMBER OF CRANES: MINIMUM CRANE CAPACITY: ESTIMATED WEIGHT (POUNDS):		<div><div></div><div>DO NOT SCALE DRAWING SURFACE FINISH ✓</div></div> <div>TOLERANCES DRAWING TOLERANCES UNLESS OTHERWISE SPECIFIED XX: ± XXX: ± ANGLE: ±</div>		DESCRIPTION FOUNDATION, CONCRETE PIER 60' X 10' OTR SERIES TRACK SCALE			
		SCALE 1:35		SHEET 1 OF 3		MATERIAL	
		THIRD ANGLE PROJECTION 		FPM		180406	
						REV A	

MATERIAL REQUIREMENTS				
REBAR SCHEDULE				
BAL. NO.	QUANTITY	LENGTH (FT.-IN.)	DESCRIPTION	WEIGHT
A	22	9' 6"	# 4 @ 12 O.C.	140
B	22	9' 10"	# 4 @ 12 O.C.	145
C	22	1' 7 1/2"	# 4 @ 12 O.C.	24
D	22	4' 0"	# 4 @ 12 O.C.	59
E	26	9' 10"	# 4 @ 4 O.C.	171
F	22	2' 6"	# 4 @ 12 O.C.	37
G	18	9' 10"	# 4 @ 4 O.C.	118
CLEANOUT SCHEDULE				
H	5	14' 6 1/2"	# 4 @ 24 O.C.	49
J	5	16' 6"	# 4 @ 24 O.C.	55
K	5	16' 5"	# 4 @ 24 O.C.	55
L	26	9' 10"	# 4 @ 24 O.C.	171
TOTAL WEIGHT OF REBAR (LBS.)				1022
TOTAL LENGTH OF REBAR (FT.)				1530
WIRE MESH		6 X 6-10 GA.		506 SQ FT

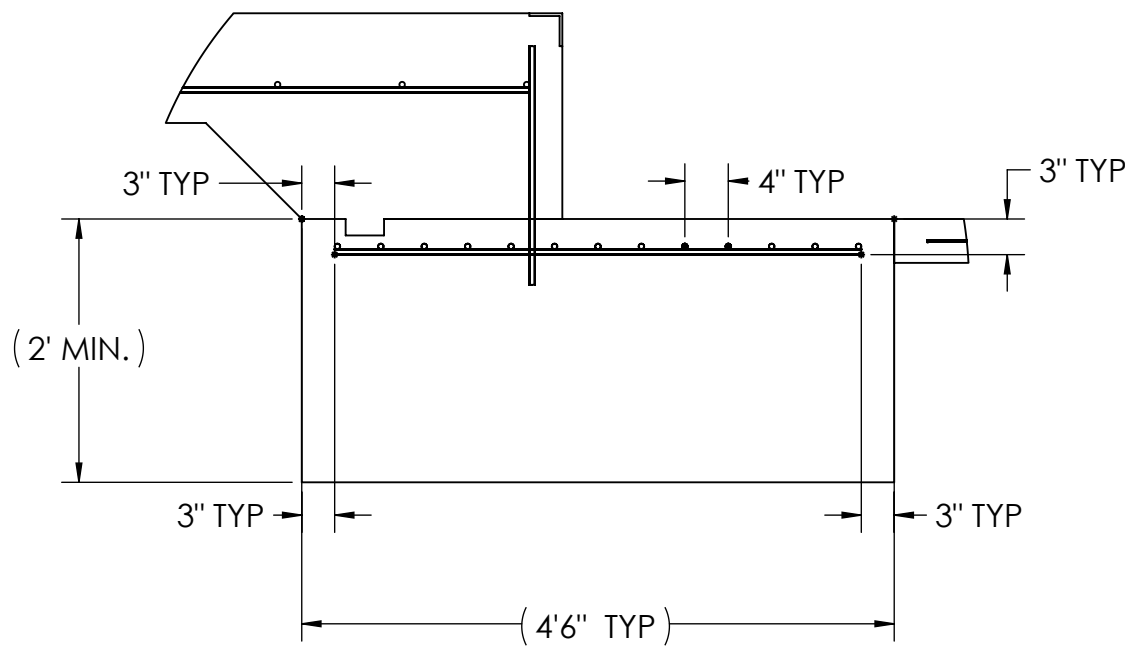


APPROACH STANDARD VIEWS

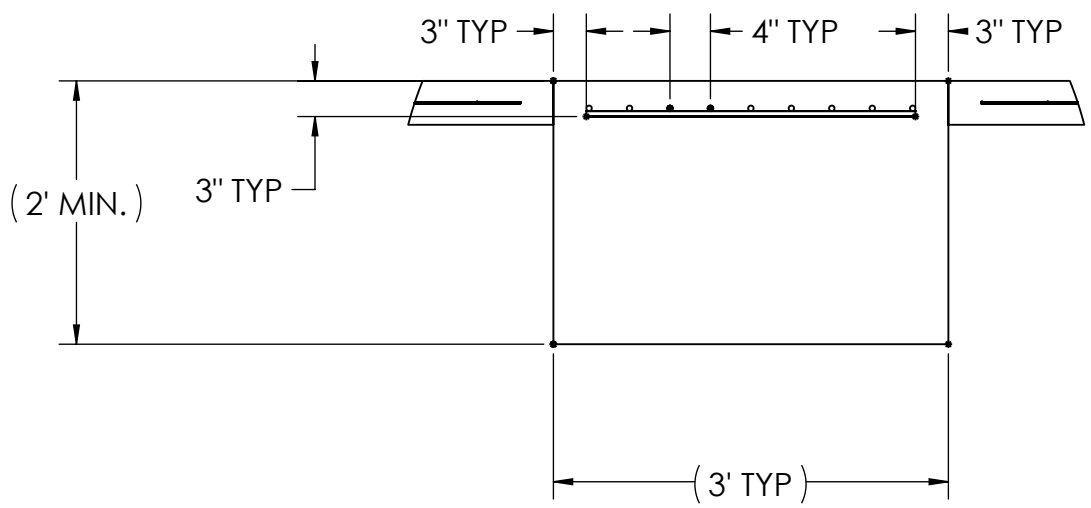
NOTES: 1) LEFT AND RIGHT APPROACHES ARE MIRROR IMAGES OF EACH OTHER AND CONTAIN AN IDENTICAL PART LIST



APPROACH PIER STANDARD VIEWS



PIER STANDARD VIEWS



DESIGNED BY DATE S. JOHNSON 02/22/2017		DRAWN BY DATE S. JOHNSON 02/22/2017		FIELD ERECTING DATE S. JOHNSON 03/27/2017		<div><div></div><div>RICE LAKE® WEIGHING SYSTEMS</div></div>	
TREATMENT NONE		THIS DRAWING AND INFORMATION CONTAINED HEREIN IS SOLELY THE PROPERTY OF RICE LAKE WEIGHING SYSTEMS INC. HEREINAFTER REFERRED TO AS "RLS". IT MAY BE USED FOR THE "RLS" PROPOSAL AND/OR ITS CUSTOMER'S USE ONLY. IT SHALL NOT BE REPRODUCED OR COPIED WITHOUT RLS'S SPECIFIC WRITTEN CONSENT AND SHALL BE IMMEDIATELY RETURNED UPON REQUEST.		UNLESS OTHERWISE SPECIFIED UNITS TO BE IN INCHES ALL THREADS TO BE CLASS 2 ALL DIMENSIONS APPLICABLE AFTER TREATMENT			
NUMBER OF CRANES 1		<div><div></div><div>DO NOT SCALE MINIMUM CRANE CAPACITY: 100,000 LBS (ESTIMATED WEIGHT (POUNDS))</div></div>		TOLERANCES DRAWING TOLERANCES UNLESS OTHERWISE SPECIFIED XX: ± XXX: ± ✓ ANGLE: ±		DESCRIPTION FOUNDATION, CONCRETE PIER 60' x 10' OTR SERIES TRACK SCALE	
		<div><div></div><div>SCALE 1:48</div></div>		<div><div></div><div>SHEET 3 OF 3</div></div>		<div><div></div><div>MATERIAL</div></div>	
		<div><div></div><div>BIRD ANGLE PROJECTION</div></div>		<div><div></div><div>PIN</div></div>		<div><div></div><div>180406</div></div>	
						<div><div></div><div>REV A</div></div>	