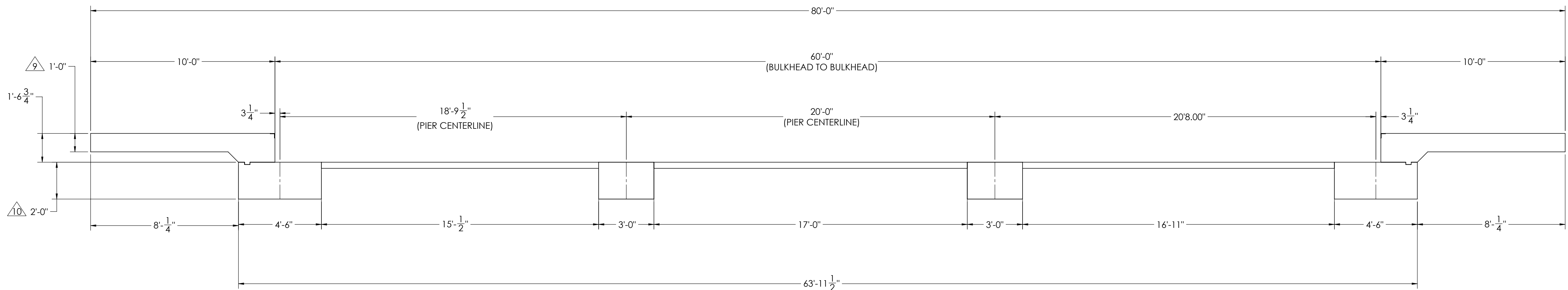
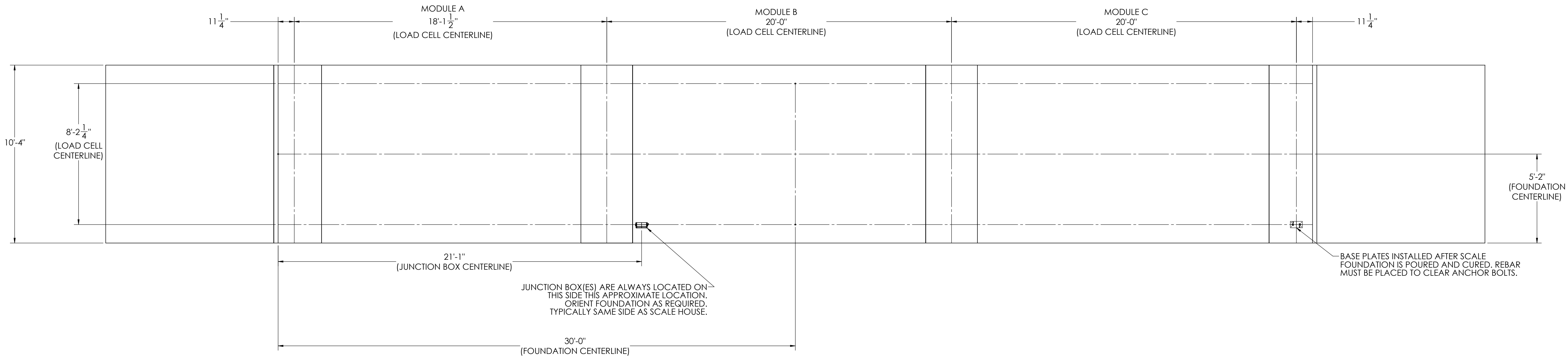









DETAILS

REVISION				
REV.	ECO	DESCRIPTION	INIT	DATE
A		ENGINEERING RELEASE	SPJ	02/22/2017



NOTES:

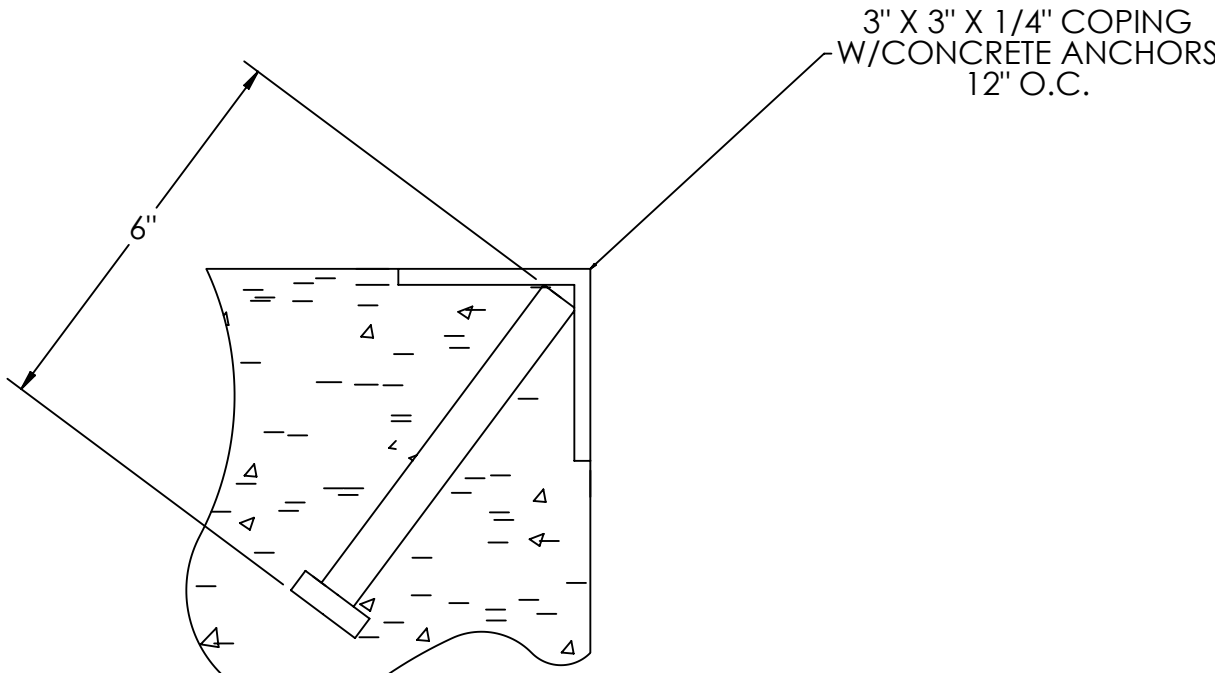
- 1) CONCRETE: f'c = 3000 PSI @ 28 DAYS.
- 2) REINFORCING STEEL: DEFORMED BARS ASTM A615 GRADE 60.
- 3) STATE AND LOCAL AGENCIES MAY HAVE VARIOUS REQUIREMENTS FOR APPROACH RAMP LENGTH, PITCH, AND FOR CLEAN OUT HEIGHT. PLEASE CHECK WITH ALL AGENCIES PRIOR TO CONSTRUCTION.
- 4) MONOLITHIC POUR IS ALLOWED AT CONTRACTOR'S DISCRETION.
- 5) DEVELOP AND MAINTAIN SITE GRADES WHICH WILL RAPIDLY DRAIN SURFACE AND ROOF RUN-OFF AWAY FROM FOUNDATION.
- 6) FOOTINGS HAVE BEEN DESIGNED FOR A MINIMUM SOIL PRESSURE OF 2500 PSF. IT WILL BE THE RESPONSIBILITY OF OTHERS TO VERIFY THIS VALUE.
- 7) WHERE REINFORCING BARS ARE SHOWN CONTINUOUS, LAP SPLICE BARS 40 DIAMETERS
- 8) APPROACHES TO BE A COMMON PLANE WITHIN 1/4".

(ISSUED BY DATE) S. JOHNSON 02/22/2017		(DRAWN BY DATE) S. JOHNSON 02/22/2017		(FIELD PREPARED DATE) S. JOHNSON 02/27/2017			
(TREATMENT) NONE		THIS DRAWING AND INFORMATION CONTAINED HEREIN IS AND REMAINS THE PROPERTY OF RICE LAKE WEIGHING SYSTEMS, INC. HEREINAFTER REFERRED TO AS "RICE LAKE". IT IS LOANED TO YOUR FIRM FOR YOUR PROPOSAL AND/OR USE BY YOUR CUSTOMER. IT SHALL NOT BE REPRODUCED OR COPIED WITHOUT RICE LAKE'S WRITTEN CONSENT AND SHALL BE IMMEDIATELY RETURNED UPON REQUEST.		UNLESS OTHERWISE SPECIFIED UNITS SHALL BE INCHES. ALL THREADS TO BE CLASS 2 ALL DIMENSIONS APPLICABLE AFTER TREATMENT			
(NUMBER OF CIRCLES) 		(TOLERANCES) DRAWING TOLERANCES UNLESS OTHERWISE SPECIFIED .XX: ± .XXX: ± ✓ ANGLE: ±		(DESCRIPTION) FOUNDATION, CONCRETE PIER 60' X 10' OTR SERIES TRACK SCALE			
(MINIMUM CRANE CAPACITY) 		(SCALE) 1:35		(SHEET) 1 OF 3		(MATERIAL) 	
(ESTIMATED WEIGHT (POUNDS)) ✓		(THIRD ANGLE PROJECTION) 		(REV) 180407		(REV) A	

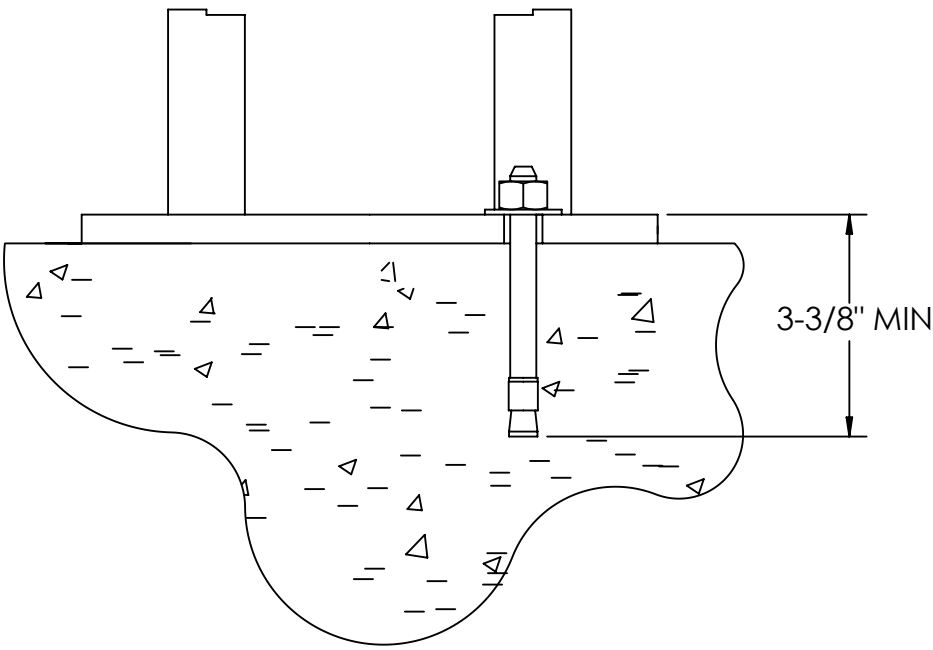
CONCRETE SCHEDULE			
		VOLUME (CUBIC YARDS)	
APPROACHES		8.7	
CLEANOUT		6.3	
PIERS		11.5	
TOTAL		26.4	
MISC. STEEL			
PIT COPING	3 X 3 X 1/4	21 LN .FT	103 LBS

VOLUME SHOWN FOR STATED PIER DEPTH.
ADD ADDITIONAL CONCRETE FOR
DEEPER PIERS AS NEEDED.

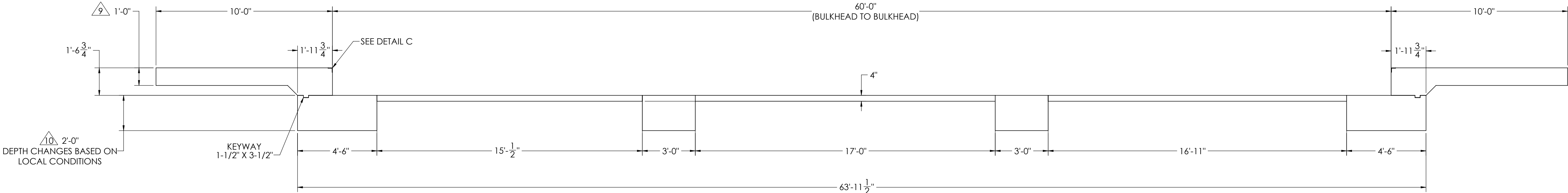
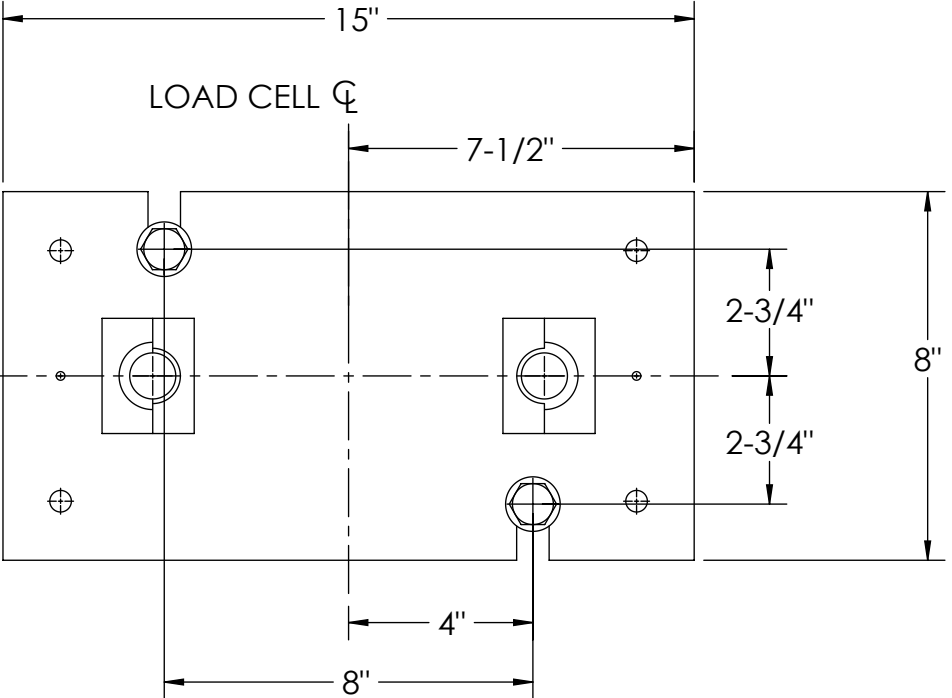
CONCRETE LAYOUT



DETAIL C



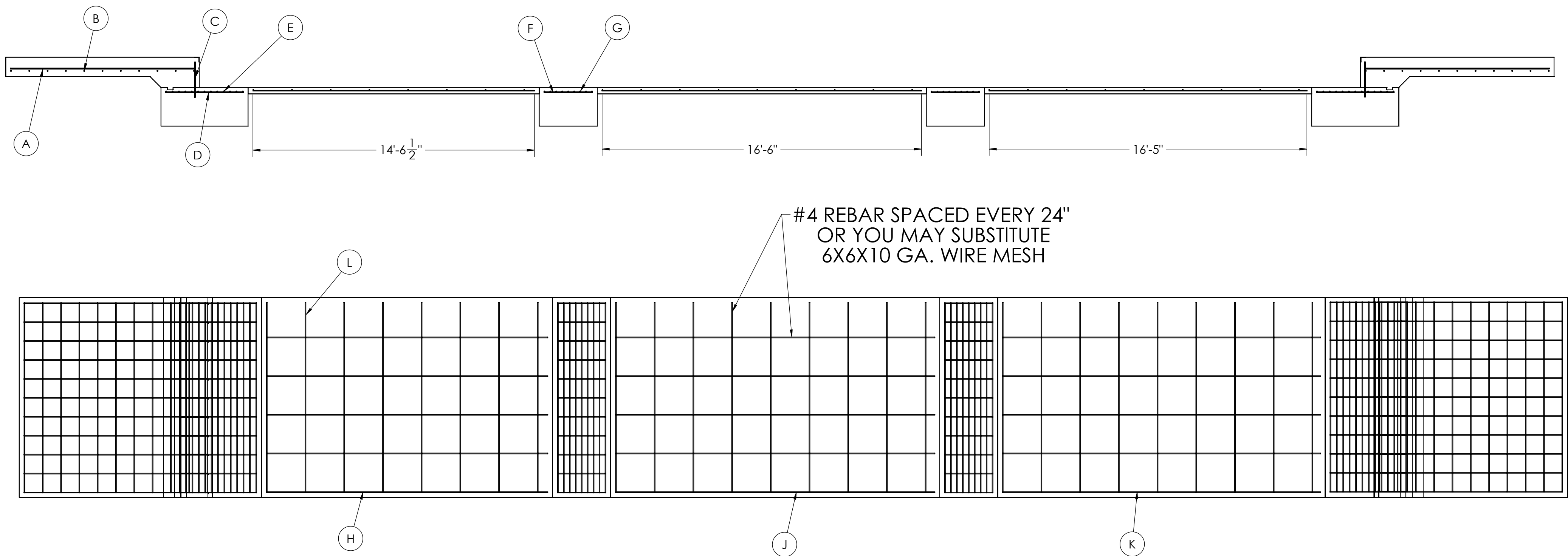
DETAIL D



DESIGNED BY: JGMS S. JOHNSON 02/22/2017	DRAWN BY: JGMS S. JOHNSON 02/22/2017	PIER APPROVAL: JGMS S. JOHNSON 03/27/2017	RICE LAKE WEIGHING SYSTEMS	
TREATMENT NONE	THIS DRAWING AND INFORMATION CONTAINED HEREIN IS AND REMAINS THE PROPERTY OF RICE LAKE WEIGHING SYSTEMS INC. - HEREINAFTER REFERRED TO AS RLWS. IT MAY BE USED ONLY FOR RLWS' PROPOSAL AND/OR ITS CUSTOMER'S ORDERS. IT SHALL NOT BE DISCLOSED OR COPIED WITHOUT RLWS' SPECIFIC WRITTEN CONSENT AND SHALL BE IMMEDIATELY RETURNED UPON REQUEST.	UNLESS OTHERWISE SPECIFIED UNITS TO BE INCHES ALL THREADS TO BE CLASS 2 ALL DIMENSIONS APPLICABLE AFTER TREATMENT	DESCRIPTION FOUNDATION, CONCRETE PIER 60' X 10' OTR SERIES TRACK SCALE	
NUMBER OF CRANES: MINIMUM CRANE CAPACITY: ESTIMATED WEIGHT (POUNDS)	DO NOT SCALE DRAWING SURFACE FINISH ✓	TOLERANCES DRAWINGS TOLERANCES UNLESS OTHERWISE SPECIFIED .XX: .XXX: ANGLE:	SCALE 1:35	SHEET 2 OF 3
THIRD ANGLE PROJECTION			171N	180407
				REV A

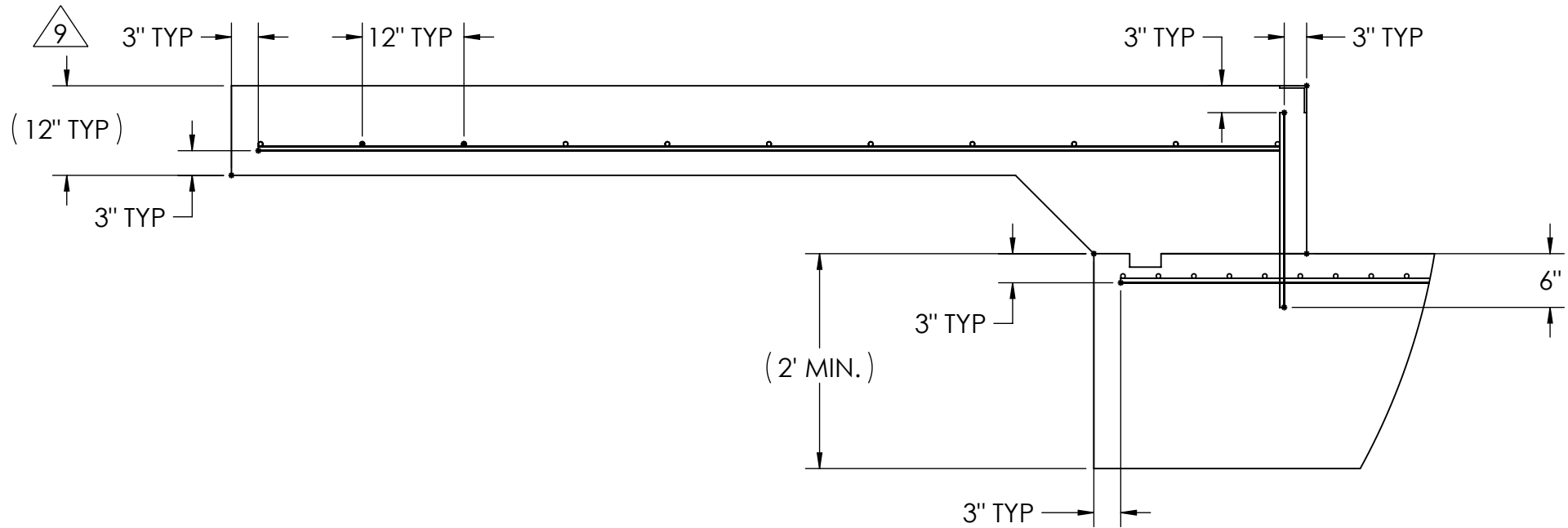
MATERIAL REQUIREMENTS				
REBAR SCHEDULE				
BAL. NO.	QUANTITY	LENGTH (FT-IN.)	DESCRIPTION	WEIGHT
A	22	9' 6"	# 4 @ 12 O.C.	140
B	22	9' 10"	# 4 @ 12 O.C.	145
C	22	1' 7 1/2"	# 4 @ 12 O.C.	24
D	22	4' 0"	# 4 @ 12 O.C.	59
E	26	9' 10"	# 4 @ 4 O.C.	171
F	22	2' 6"	# 4 @ 12 O.C.	37
G	18	9' 10"	# 4 @ 4 O.C.	118
CLEANOUT SCHEDULE				
H	5	14' 6 1/2"	# 4 @ 24 O.C.	49
J	5	16' 6"	# 4 @ 24 O.C.	55
K	5	16' 5"	# 4 @ 24 O.C.	55
L	26	9' 10"	# 4 @ 24 O.C.	171
TOTAL WEIGHT OF REBAR (LBS.)				1022
TOTAL LENGTH OF REBAR (FT.)				1530
WIRE MESH		6 X 6-10 GA.		506 SQ FT

REBAR LAYOUT

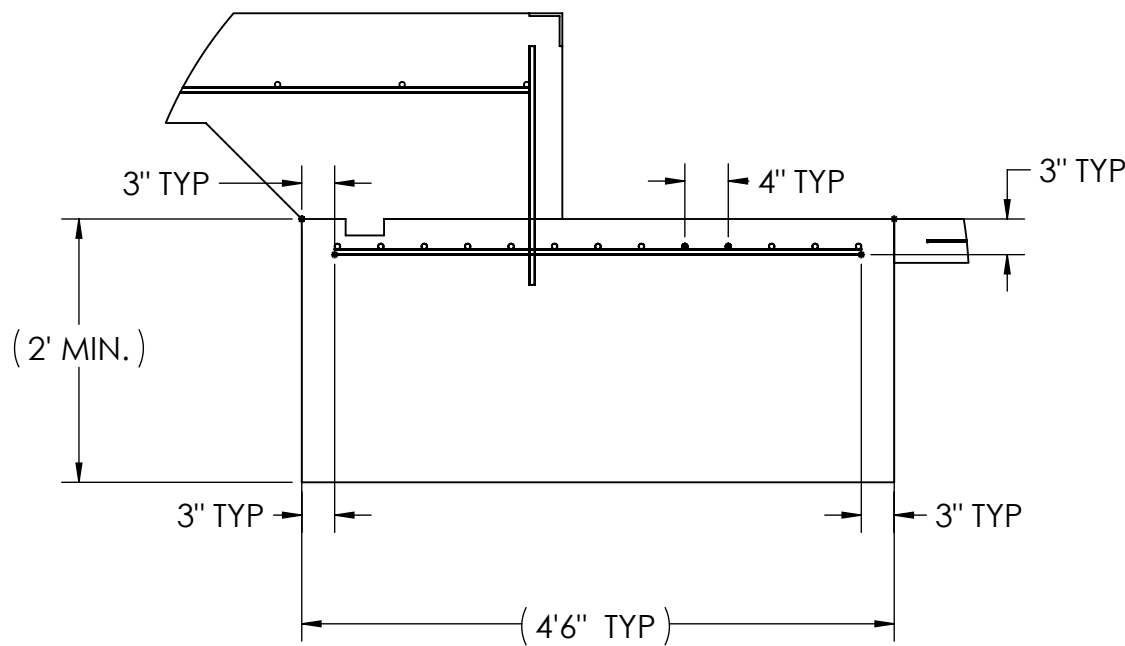


APPROACH STANDARD VIEWS

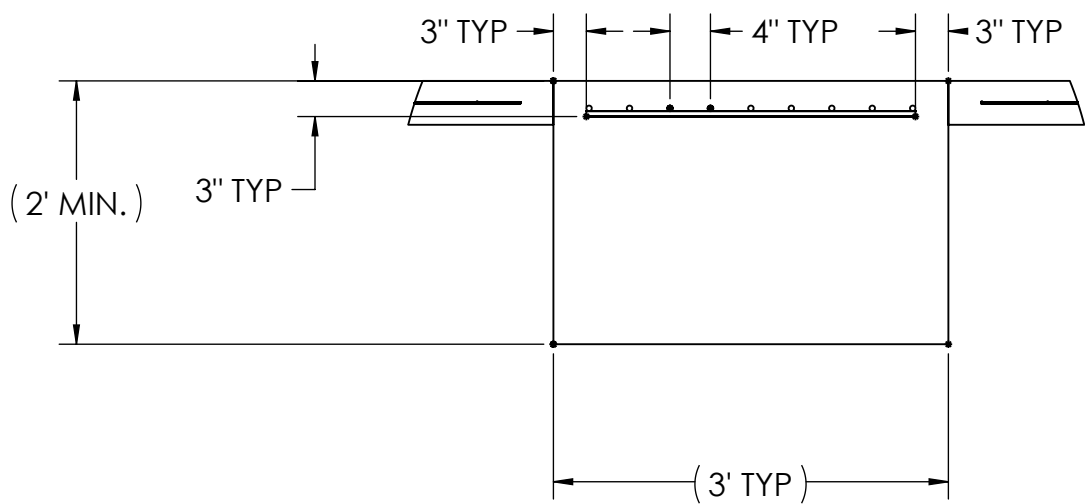
NOTES: 1) LEFT AND RIGHT APPROACHES ARE MIRROR IMAGES OF EACH OTHER AND CONTAIN AN IDENTICAL PART LIST






APPROACH PIER STANDARD VIEWS



PIER STANDARD VIEWS



DESIGNED BY DATE S. JOHNSON 02/22/2017		DRAWN BY DATE S. JOHNSON 02/22/2017		FIELD APPROVAL DATE S. JOHNSON 03/27/2017		<div></div>	
TREATMENT NONE		THIS DRAWING AND INFORMATION CONTAINED HEREIN IS AND REMAINS THE PROPERTY OF RICE LAKE WEIGHING SYSTEMS INC. HEREINAFTER REFERRED TO AS RICE LAKE. IT MAY BE USED FOR THE "RUM" PROPOSAL AND/OR ITS CUSTOMER'S PURPOSES. IT SHALL NOT BE REPRODUCED OR COPIED WITHOUT RICE LAKE'S WRITTEN CONSENT AND SHALL BE IMMEDIATELY RETURNED UPON REQUEST.		UNLESS OTHERWISE SPECIFIED UNITS TO BE IN INCHES ALL THREADS TO BE CLASS 2 ALL DIMENSIONS APPLICABLE AFTER TREATMENT			
NUMBER OF CRANES 		TOLERANCES DRAWING TOLERANCES UNLESS OTHERWISE SPECIFIED .XX; ± .XXX; ± ANGLE: ±		DESCRIPTION FOUNDATION, CONCRETE PIER 60' x 10' OTR SERIES TRACK SCALE			
MINIMUM CRANE CAPACITY 		DO NOT SCALE DRAWING SURFACE FINISH ✓		SCALE 1:48	SHEET 3 OF 3		