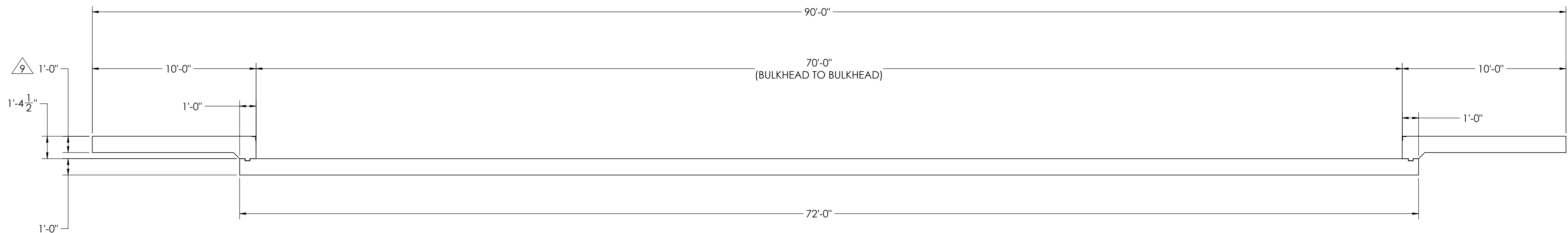
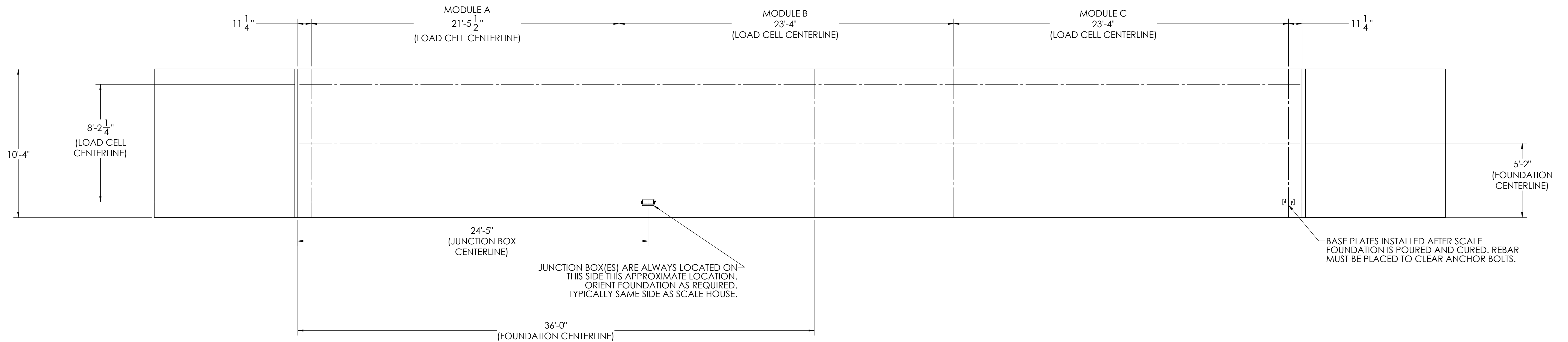


## DETAILS

REVISION				
REV.	ECO	DESCRIPTION	INIT	DATE
A		ENGINEERING RELEASE	SPJ	02/17/2017
B		REVISED CONCRETE	SPJ	2/19/2019









NOTES:

- 1) CONCRETE:  $f_c = 3000$  PSI @ 28 DAYS.
- 2) REINFORCING STEEL: DEFORMED BARS ASTM A615 GRADE 60.
- 3) STATE AND LOCAL AGENCIES MAY HAVE VARIOUS REQUIREMENTS FOR APPROACH RAMP LENGTH, PITCH, AND FOR CLEAN OUT HEIGHT. PLEASE CHECK WITH ALL AGENCIES PRIOR TO CONSTRUCTION.
- 4) MONOLITHIC POUR OF SLAB AND APPROACHES IS ALLOWED, AT CONTRACTOR'S DISCRETION.
- 5) DEVELOP AND MAINTAIN SITE GRADES WHICH WILL RAPIDLY DRAIN SURFACE AND ROOF RUN-OFF AWAY FROM FOUNDATION.
- 6) FOOTINGS HAVE BEEN DESIGNED FOR A MINIMUM SOIL PRESSURE OF 1500 PSF, IT WILL BE THE RESPONSIBILITY OF OTHERS TO VERIFY THIS VALUE.
- 7) WHERE REINFORCING BARS ARE SHOWN CONTINUOUS, LAP SPICE BARS 40 DIAMETERS.
- 8) APPROACHES TO BE A COMMON PLANE WITHIN 1/4".

9 APPROACH THICKNESS MAY BE 10" MINIMUM WHERE ALLOWED BY STATE REGULATIONS

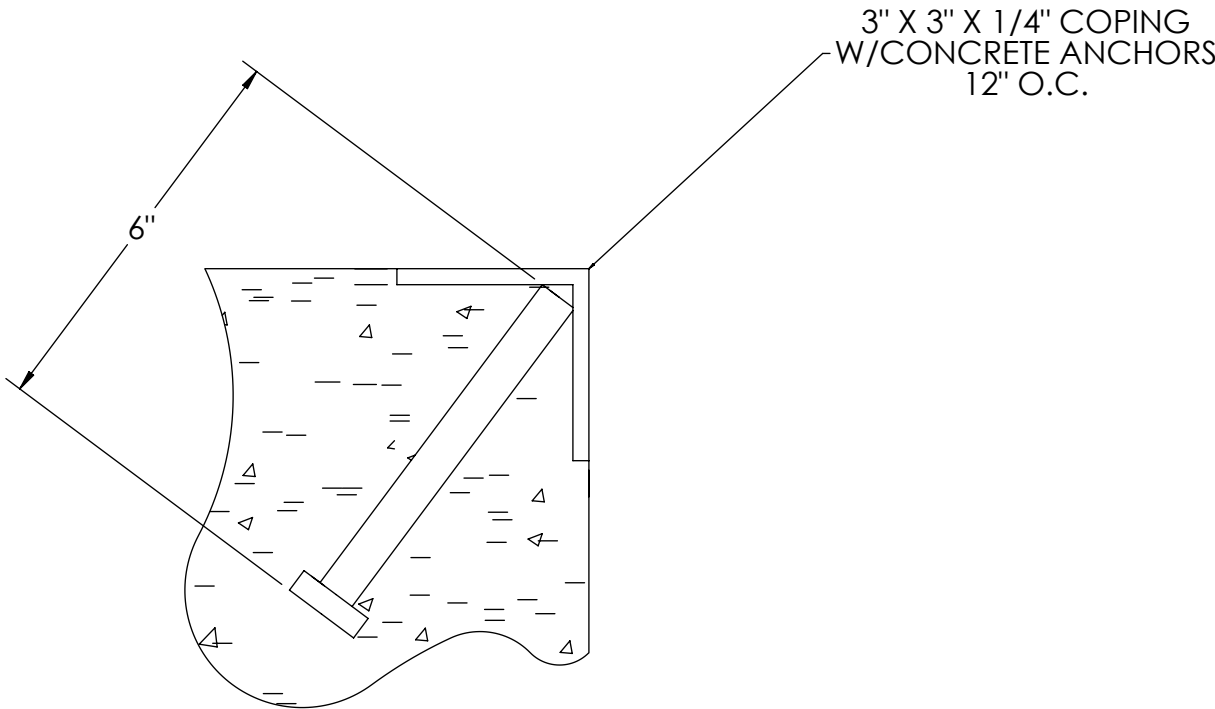
- 10) IF FROST CAN PENETRATE BELOW FOUNDATION, AT LEAST 12 INCHES OF WELL DRAINED, COMPACTED BASE MATERIAL MUST BE PROVIDED UNDER FOUNDATION

(ISSUE) RT DATE <b>S. JOHNSON</b> <b>02/03/2017</b>		DRAWN BY DATE <b>S. JOHNSON</b> <b>02/03/2017</b>		REVISION DATE <b>S. JOHNSON</b> <b>02/19/2019</b>			
(TREATMENT)  <b>NONE</b>		THIS DRAWING AND INFORMATION CONTAINED HEREIN IS THE PROPERTY OF RICE LAKE WEIGHING SYSTEMS INC. HEREINAFTER REFERRED TO AS RLWS. IT MAY BE USED ONLY FOR THE PURPOSES, AND UNDER THE CONDITIONS, SET FORTH IN THE ORDER AND ITS CUSTOMER ORDER. IT SHALL NOT BE DISCLOSED OR COPIED WITHOUT RLWS SPECIFIC WRITTEN CONSENT AND SHALL BE IMMEDIATELY RETURNED UPON REQUEST.		UNLESS OTHERWISE SPECIFIED UNITS TO BE INCHES. ALL THREADS TO BE CLASS 2 ALL DIMENSIONS APPLICABLE AFTER TREATMENT			
(NUMBER OF CRANES)  		<b>TOLERANCES</b> DO NOT SCALE DRAWING SURFACE FINISH .XX: ± .XXX: ± ✓ ANGLE: ±		(DESCRIPTION) <b>FOUNDATION, CONCRETE SLAB 70' x 10' OTR SERIES TRUCK SCALE</b>			
(MINIMUM CRANE CAPACITY)  		DRAWING TOLERANCES UNLESS OTHERWISE SPECIFIED		(SCALE) 1:45		(SHEET) 1 OF 3	
(ESTIMATED WEIGHT (POUNDS))  				(THIRD ANGLE PROJECTION) 		(MATERIAL) <b>180410</b>	
						(REV) <b>B</b>	

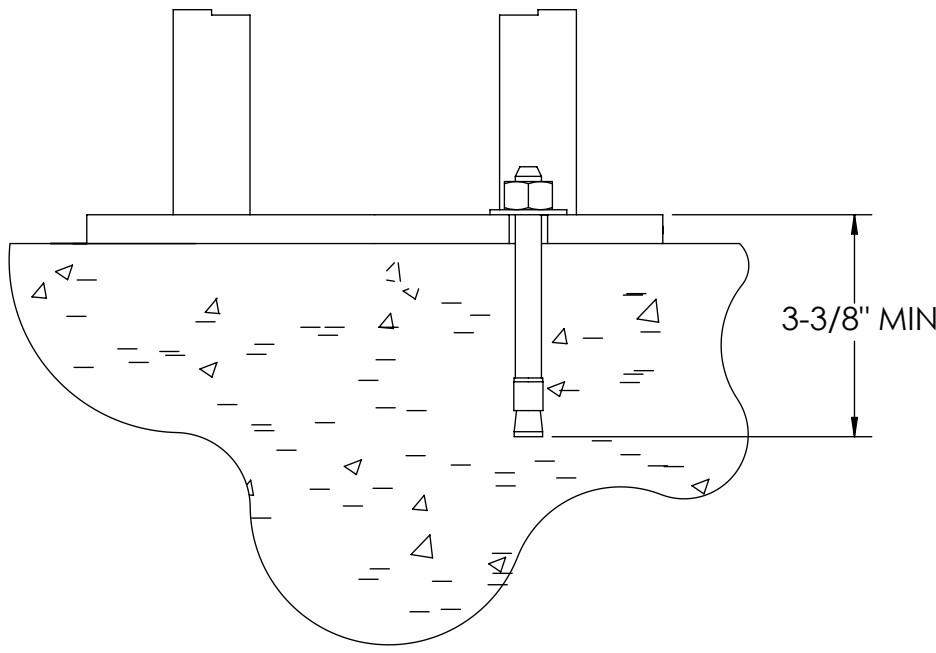
CONCRETE SCHEDULE			
VOLUME (CUBIC YARDS)			
APPROACHES			8.0
FLOOR			27.8
TOTAL			35.8
MISC. STEEL			
PIT COPING	3 X 3 X 1/4	21 LN. FT	103 LBS

# CONCRETE LAYOUT

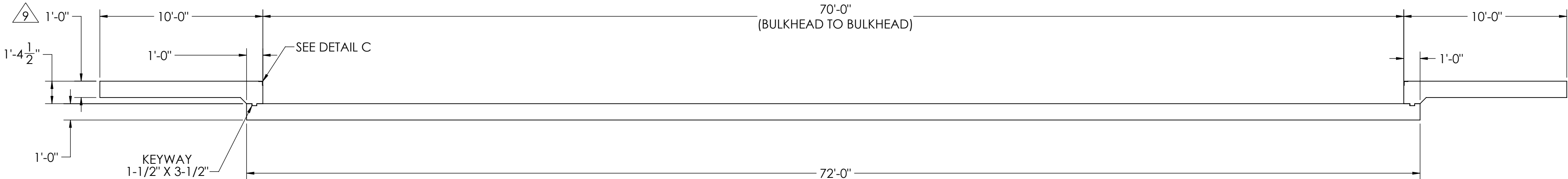
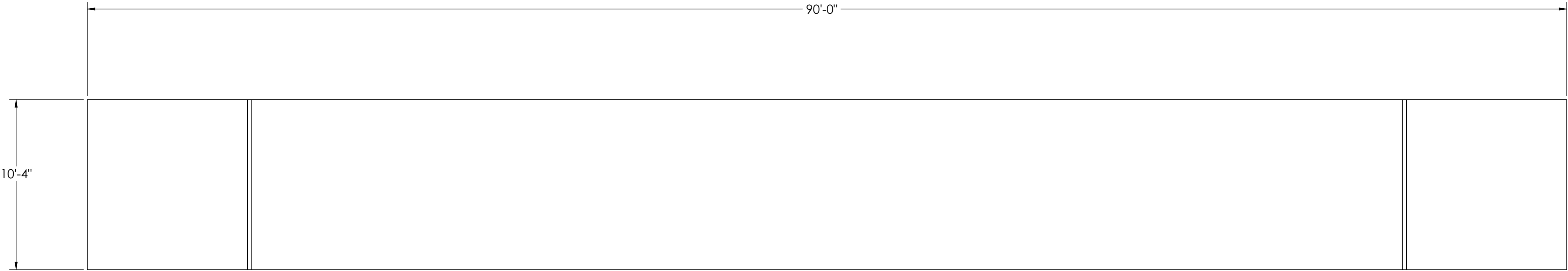
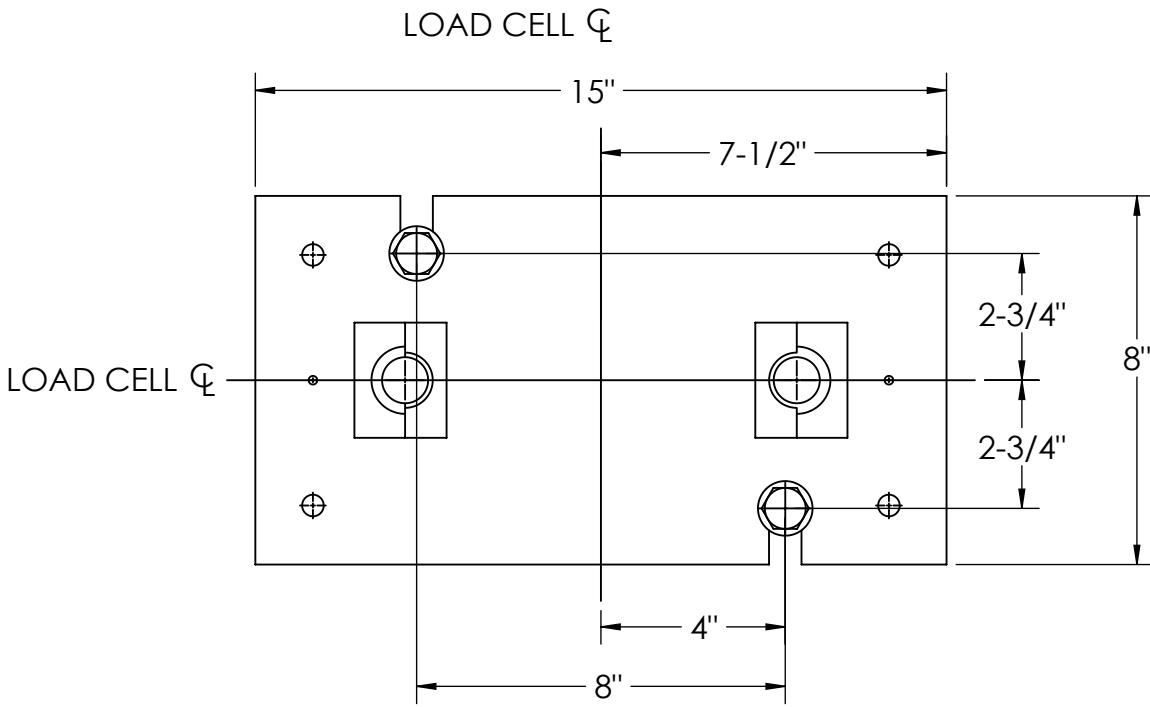
REVISION				
REV	ECO	DESCRIPTION	INIT	DATE





DETAIL C



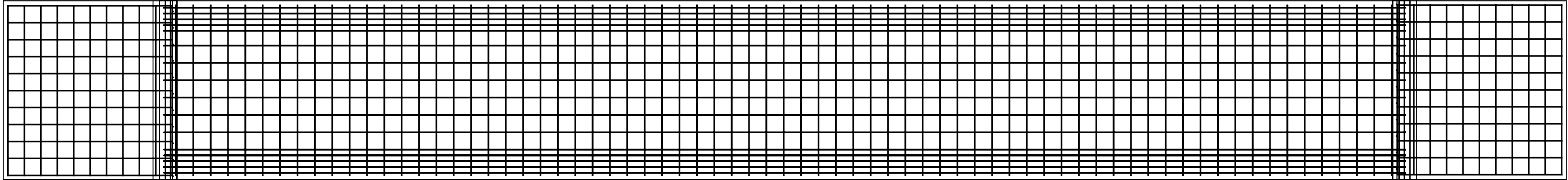
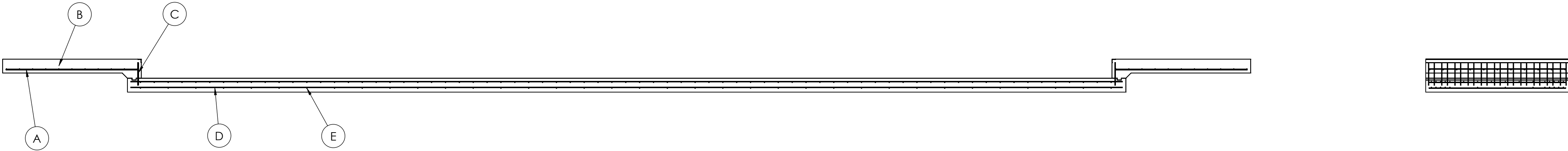
DETAIL D



DESIGNED BY DATE S. JOHNSON 02/03/2017		DRAWN BY DATE S. JOHNSON 02/03/2017		FIELD APPROVAL DATE S. JOHNSON 02/19/2019		<div><div></div><div><b>RICE LAKE</b></div><div>WEIGHING SYSTEMS</div></div>	
TREATMENT  NONE		THIS DRAWING AND INFORMATION CONTAINED HEREIN IS AND REMAINS THE PROPERTY OF RICE LAKE WEIGHING SYSTEMS INC. - HEREINAFTER REFERRED TO AS RLWS. IT MAY BE USED ONLY FOR RLWS' PROPOSAL AND/OR ITS CUSTOMER'S ORDERS. IT SHALL NOT BE DISCLOSED OR COPIED WITHOUT RLWS' SPECIFIC WRITTEN CONSENT AND SHALL BE IMMEDIATELY RETURNED UPON REQUEST.		UNLESS OTHERWISE SPECIFIED UNITS TO BE INCHES ALL THREADS TO BE CLASS 2 ALL DIMENSIONS APPLICABLE AFTER TREATMENT			
NUMBER OF CRANES:  MINIMUM CRANE CAPACITY:  ESTIMATED WEIGHT (POUNDS):		TOLERANCES DRAWING TOLERANCES UNLESS OTHERWISE SPECIFIED DO NOT SCALE DRAWING SURFACE FINISH ✓ ANGLE: ±		DESCRIPTION: FOUNDATION, CONCRETE SLAB 70' X 10' OTR SERIES TRUCK SCALE			
		<div>XX: ± XXX: ± ✓</div>		SCALE 1:55	SHEET 2 OF 3		MATERIAL
				THIRD ANGLE PROJECTION 	FPM	180410	REV B

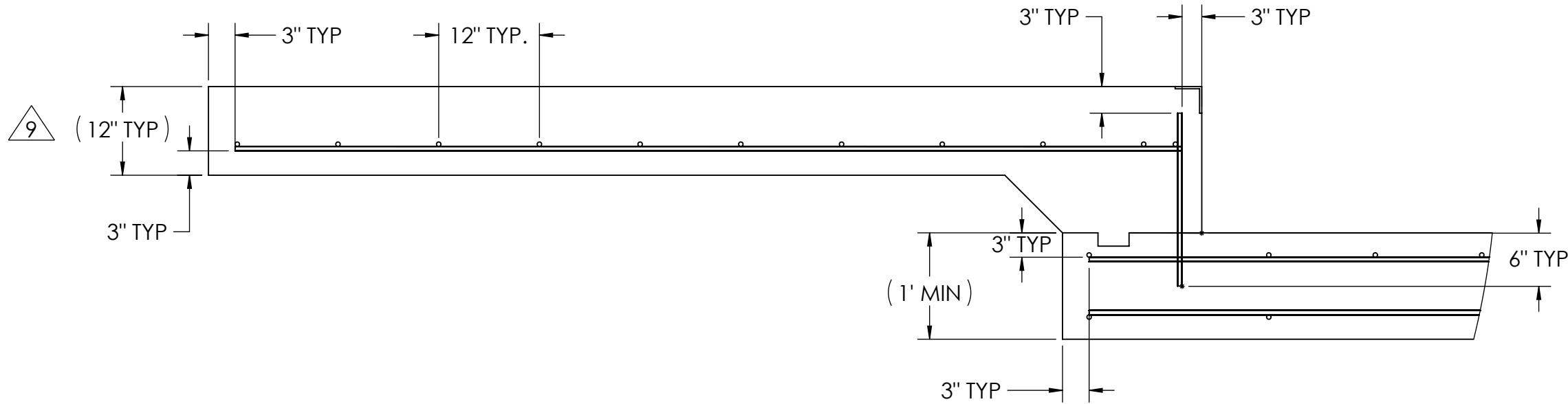
MATERIAL REQUIREMENTS				
REBAR SCHEDULE				
BAL. NO.	QUANTITY	LENGTH (FT-IN.)	DESCRIPTION	WEIGHT
A	22	9' 6"	# 4 @ 12 O.C.	140
B	22	9' 10"	# 4 @ 12 O.C.	145
C	22	1' 7 1/2"	# 4 @ 12 O.C.	24
D	29	71' 6"	# 4 AS SHOWN	1385
E	107	9' 10"	# 4 AS SHOWN	703
TOTAL WEIGHT OF REBAR (LBS.)				2396
TOTAL LENGTH OF REBAR (FT.)				3587

REBAR LAYOUT

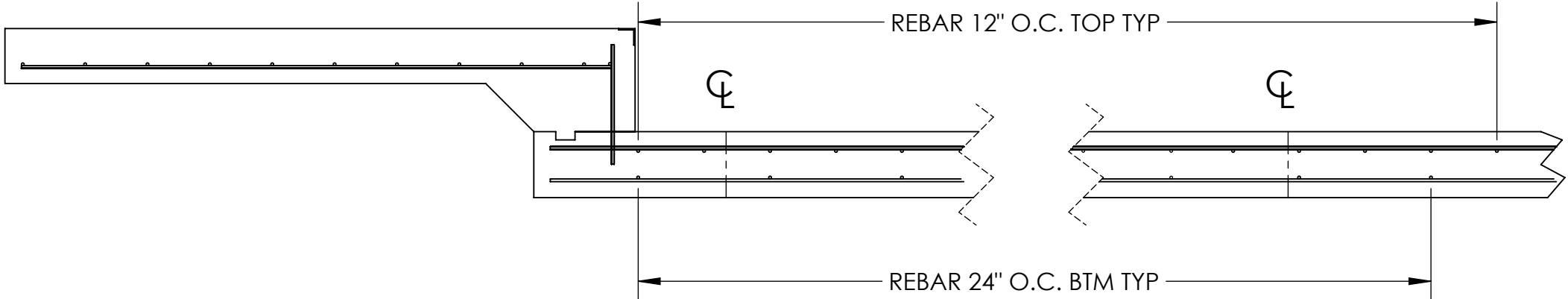


APPROACH STANDARD VIEW

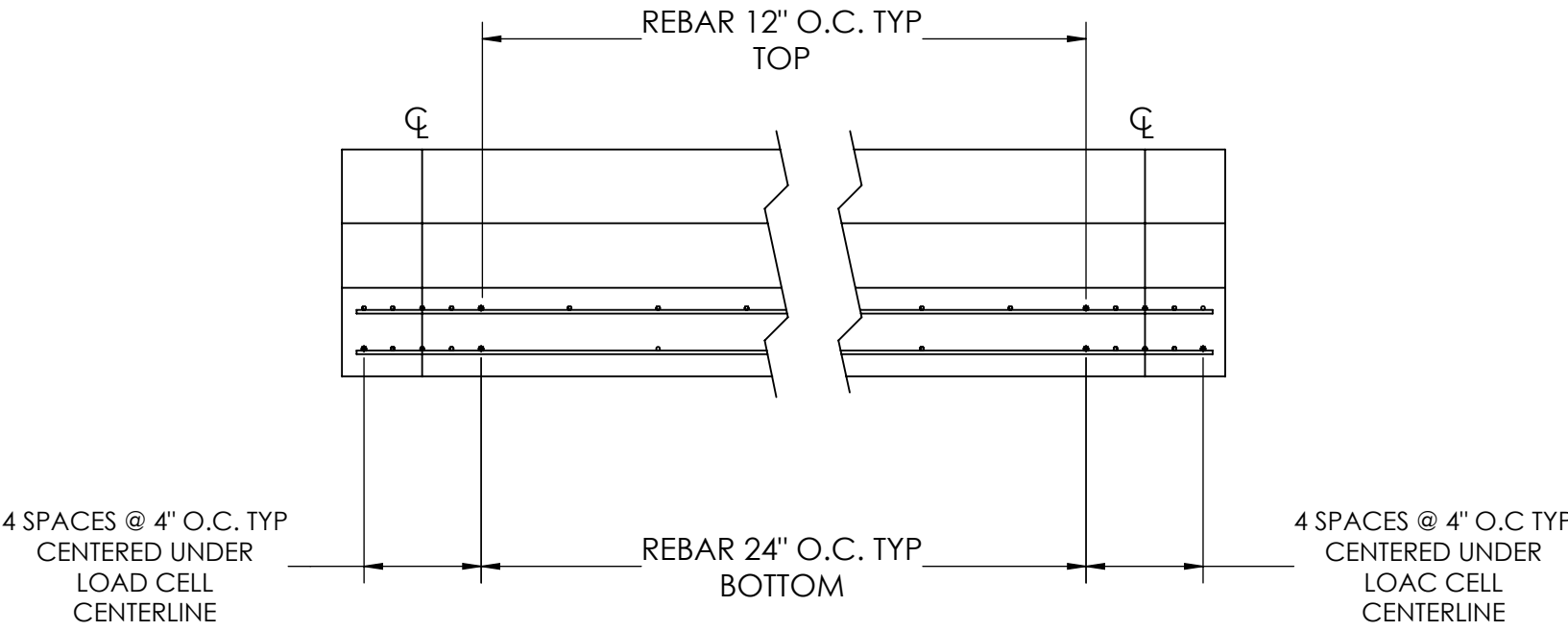
**NOTES:** 1) LEFT AND RIGHT APPROACHES ARE MIRROR IMAGES OF EACH OTHER AND CONTAIN AN IDENTICAL PART LIST



REBAR SPACING LENGTH



REBAR SPACING WIDTH



DESIGNED BY: JONAS S. JOHNSON 02/03/2017	DRAWN BY: JONAS S. JOHNSON 02/03/2017	FIELD APPROVAL: JONAS S. JOHNSON 02/19/2019	<b>RICE LAKE</b> WEIGHING SYSTEMS	
TREATMENT  NONE	THIS DRAWING AND INFORMATION CONTAINED HEREIN IS AND REMAINS THE PROPERTY OF RICE LAKE WEIGHING SYSTEMS INC. - HEREINAFTER REFERRED TO AS RLWS. IT MAY BE USED ONLY FOR RLWS' PROPOSAL AND/OR ITS CUSTOMER'S ORDERS. IT SHALL NOT BE DISCLOSED OR COPIED WITHOUT RLWS' SPECIFIC WRITTEN CONSENT AND SHALL BE IMMEDIATELY RETURNED UPON REQUEST.	UNLESS OTHERWISE SPECIFIED UNITS TO BE INCHES ALL THREADS TO BE CLASS 2 ALL DIMENSIONS APPLICABLE AFTER TREATMENT	DESCRIPTION: FOUNDATION, CONCRETE SLAB 70' X 10' OTR SERIES TRUCK SCALE	
NUMBER OF CRANES: MINIMUM CRANE CAPACITY: (ESTIMATED WEIGHT (POUNDS))	DO NOT SCALE DRAWING SURFACE FINISH TOLERANCES DRAWING TOLERANCES UNLESS OTHERWISE SPECIFIED .XX: ± .XXX: ± ANGLE: ±	SCALE: 1:192 SHEET: 3 OF 3 THIRD ANGLE PROJECTION: Y/N	MATERIAL: 180410	REV: B