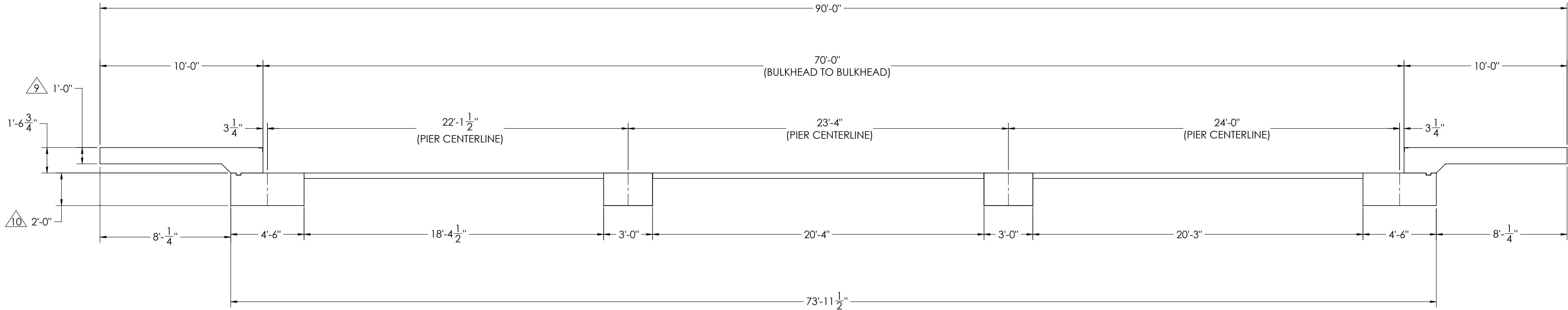
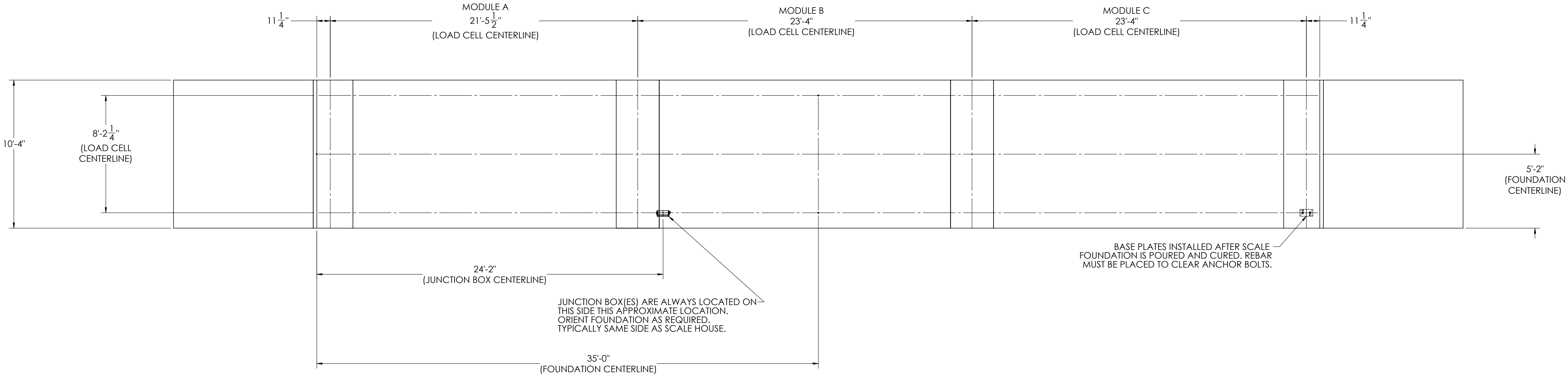


DETAILS


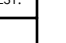
		REVISION		
REV.	ECO	DESCRIPTION	INIT	DATE
A		ENGINEERING RELEASE	SPJ	02/22/2017



NOTES:

- 1) CONCRETE: f_c = 3000 PSI @ 28 DAYS.
- 2) REINFORCING STEEL: DEFORMED BARS ASTM A615 GRADE 60.
- 3) STATE AND LOCAL AGENCIES MAY HAVE VARIOUS REQUIREMENTS FOR APPROACH RAMP LENGTH, PITCH, AND FOR CLEAN OUT HEIGHT. PLEASE CHECK WITH ALL AGENCIES PRIOR TO CONSTRUCTION.
- 4) MONOLITHIC POUR IS ALLOWED AT CONTRACTOR'S DISCRETION.
- 5) DEVELOP AND MAINTAIN SITE GRADES WHICH WILL RAPIDLY DRAIN SURFACE AND ROOF RUN-OFF AWAY FROM FOUNDATION.
- 6) FOOTINGS HAVE BEEN DESIGNED FOR A MINIMUM SOIL PRESSURE OF 2500 PSF. IT WILL BE THE RESPONSIBILITY OF OTHERS TO VERIFY THIS VALUE.
- 7) WHERE REINFORCING BARS ARE SHOWN CONTINUOUS, LAP SPLICE BARS 40 DIAMETERS.
- 8) APPROACHES TO BE A COMMON PLANE WITHIN 1/4".

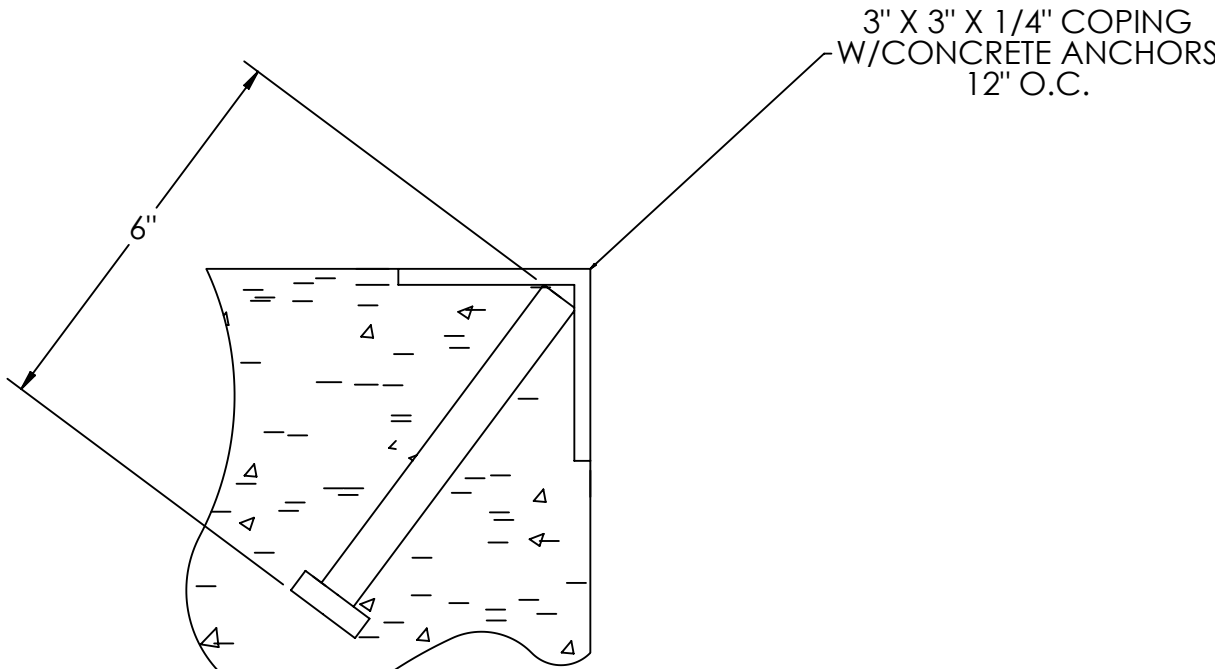
- △₉ APPROACH THICKNESS MAY BE 10" MINIMUM WHERE ALLOWED BY STATE REGULATIONS
- △₁₀ FOUNDATION MUST EXTEND A MINIMUM OF 12" BELOW THE FROST PENETRATION LINE

DESIGNED BY DATE S. JOHNSON 02/22/2017		DRAWN BY DATE S. JOHNSON 02/22/2017		PIER APPROVAL DATE S. JOHNSON 03/27/2017		<div><div></div><div>RICE LAKE</div><div>WEIGHING SYSTEMS</div></div>
TREATMENT NONE		THIS DRAWING AND INFORMATION CONTAINED HEREIN IS AND REMAINS THE PROPERTY OF RICE LAKE WEIGHING SYSTEMS INC. - HEREINAFTER REFERRED TO AS RLWS. IT MAY BE USED ONLY FOR RLWS' PROPOSAL AND/OR ITS CUSTOMER'S ORDERS. IT SHALL NOT BE DISCLOSED OR COPIED WITHOUT RLWS' SPECIFIC WRITTEN CONSENT AND SHALL BE IMMEDIATELY RETURNED UPON REQUEST.		UNLESS OTHERWISE SPECIFIED UNITS TO BE INCHES ALL THREADS TO BE CLASS 2 ALL DIMENSIONS APPLICABLE AFTER TREATMENT		
NUMBER OF CRANES: MINIMUM CRANE CAPACITY: ESTIMATED WEIGHT (POUNDS):		TOLERANCES DRAWING TOLERANCES UNLESS OTHERWISE SPECIFIED DO NOT SCALE SURFACE FINISH XXX: ± XXX: ± ANGLE: ±		DESCRIPTION FOUNDATION, CONCRETE PIER 70' X 10' OTR SERIES TRUCK SCALE		
				SCALE 1:45 SHEET 1 OF 3 MATERIAL 180413 REV A		

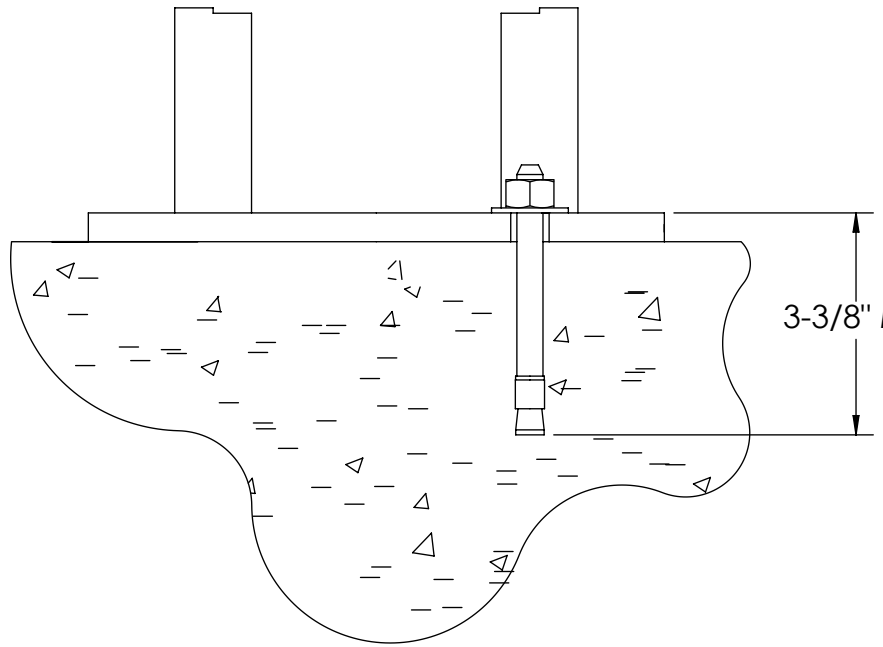
CONCRETE SCHEDULE			
VOLUME (CUBIC YARDS)			
APPROACHES			9.7
CLEANOUT			7.6
PIERS			11.5
TOTAL			28.7
MISC. STEEL			
PIT COPING	3 X 3 X 1/4	21 LN.FT	103 LBS

VOLUME SHOWN FOR STATED PIER DEPTH.
ADD ADDITIONAL CONCRETE FOR
DEEPER PIERS AS NEEDED.

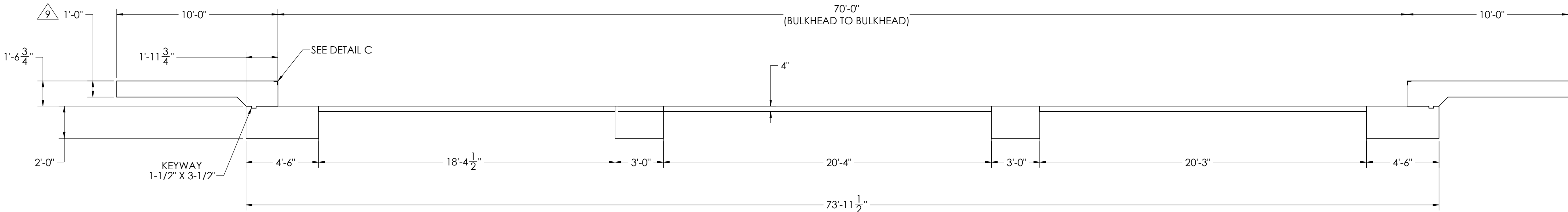
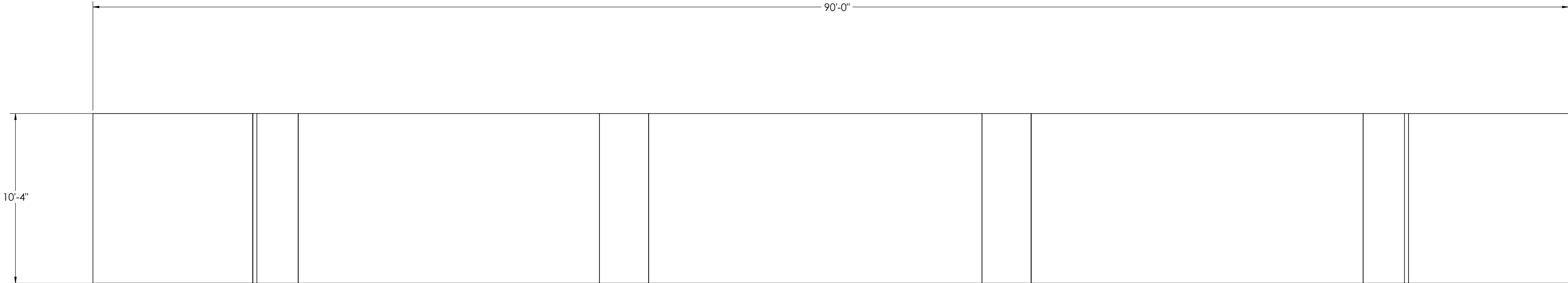
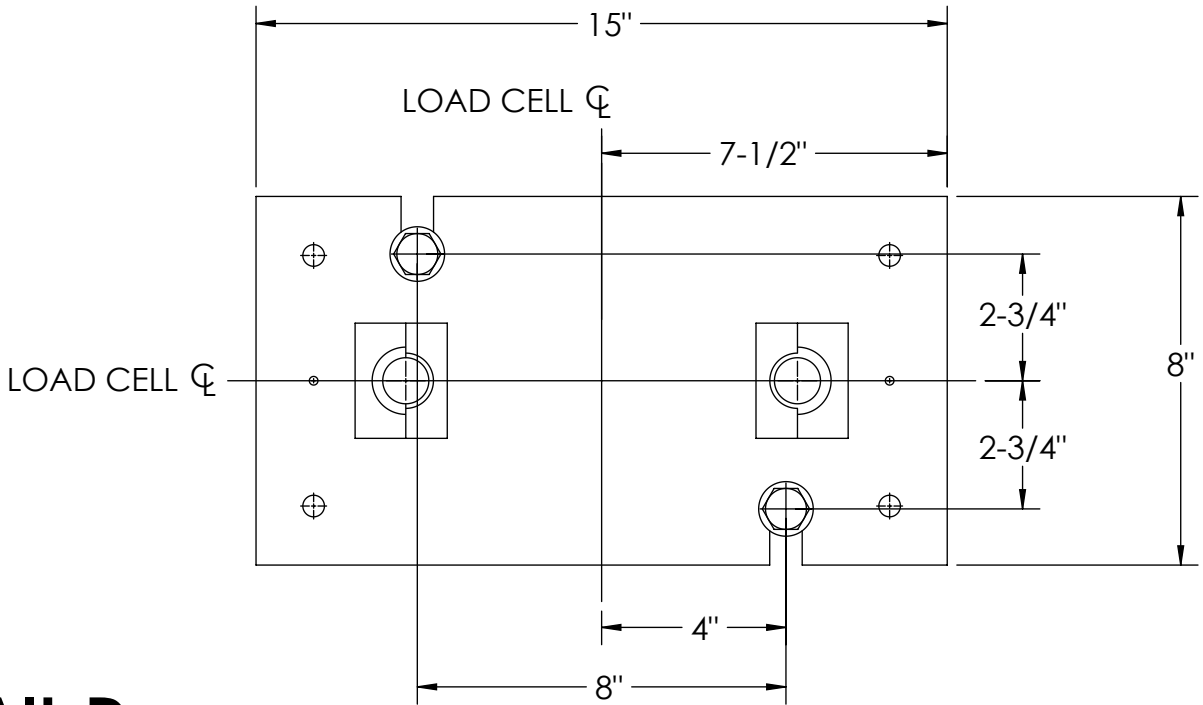
CONCRETE LAYOUT



DETAIL C



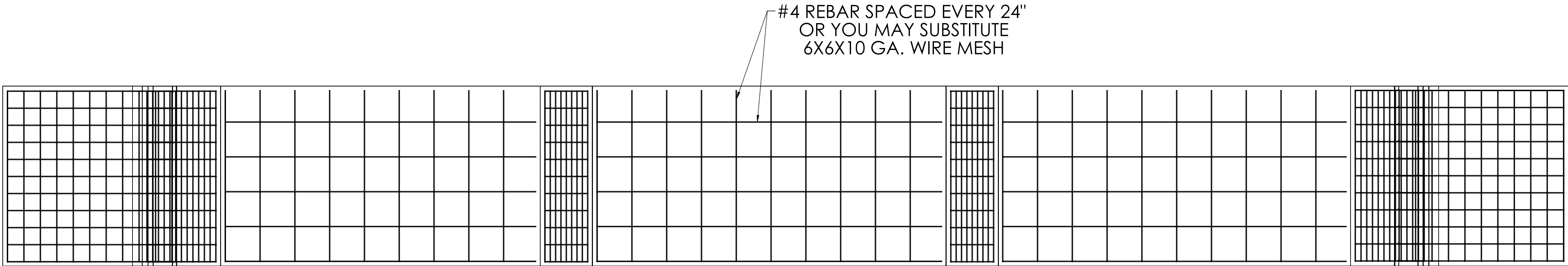
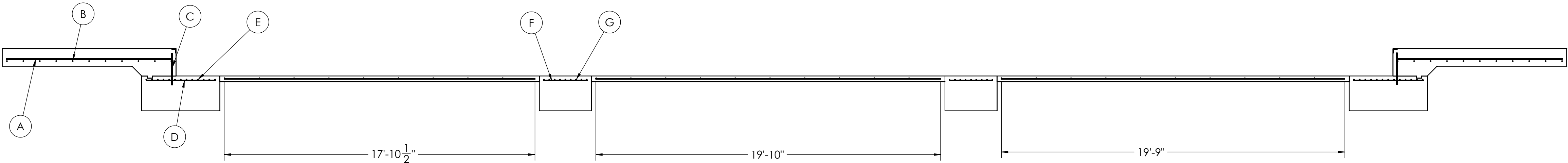
DETAIL D



DESIGNED BY: J. JOHNSON S. JOHNSON 02/22/2017	DRAWN BY: J. JOHNSON S. JOHNSON 02/22/2017	PIER APPROVAL DATE S. JOHNSON 03/27/2017	RICE LAKE WEIGHING SYSTEMS	
TREATMENT NONE	THIS DRAWING AND INFORMATION CONTAINED HEREIN IS AND REMAINS THE PROPERTY OF RICE LAKE WEIGHING SYSTEMS INC. - HEREINAFTER REFERRED TO AS RLWS. IT MAY BE USED ONLY FOR RLWS' PROPOSAL AND/OR ITS CUSTOMER'S ORDERS. IT SHALL NOT BE DISCLOSED OR COPIED WITHOUT RLWS SPECIFIC WRITTEN CONSENT AND SHALL BE IMMEDIATELY RETURNED UPON REQUEST.	UNLESS OTHERWISE SPECIFIED UNITS TO BE INCHES ALL THREADS TO BE CLASS 2 ALL DIMENSIONS APPLICABLE AFTER TREATMENT	DESCRIPTION FOUNDATION, CONCRETE PIER 70' X 10' OTR SERIES TRUCK SCALE	
NUMBER OF CRANES: MINIMUM CRANE CAPACITY: ESTIMATED WEIGHT (POUNDS)	DO NOT SCALE DRAWING SURFACE FINISH TOLERANCES UNLESS OTHERWISE SPECIFIED .XX: .XXX: ANGLE:	SCALE 1:45 SHEET 2 OF 3 THIRD ANGLE PROJECTION FPM	MATERIAL 180413	REV A

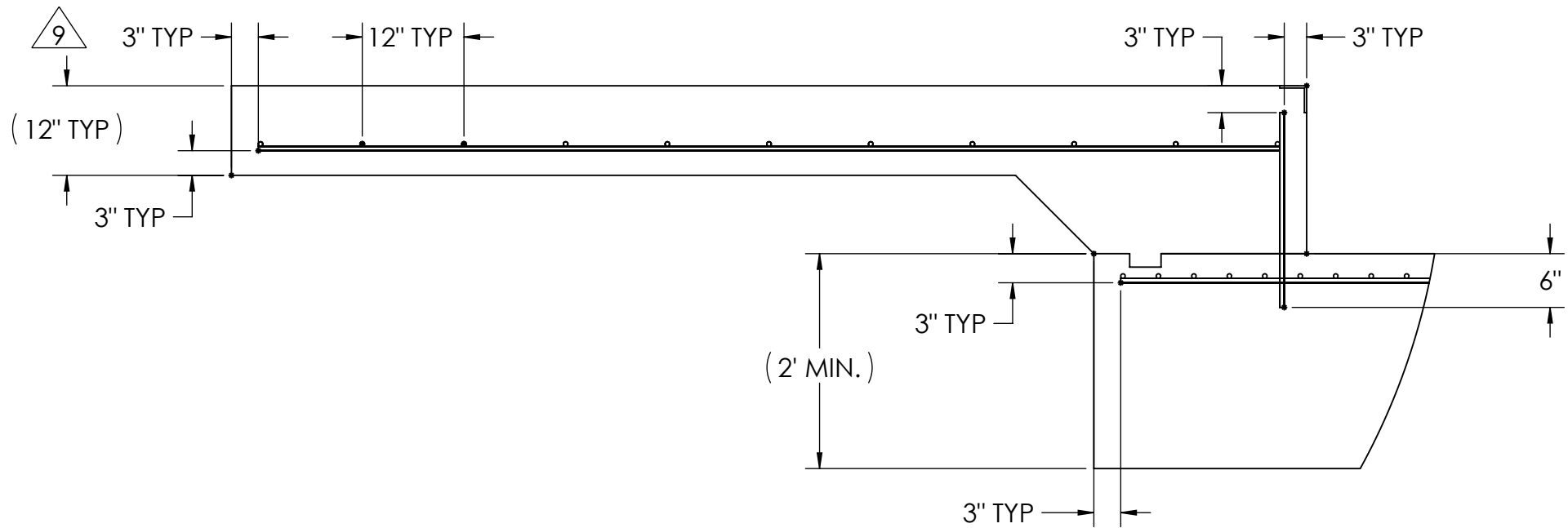
MATERIAL REQUIREMENTS					
REBAR SCHEDULE					
BAL. NO.	QUANTITY	LENGTH (FT-IN.)	DESCRIPTION	WEIGHT	
A	22	9' 6"	# 4 @ 12 O.C.	140	
B	22	9' 10"	# 4 @ 12 O.C.	145	
C	22	1' 9 3/4"	# 4 @ 12 O.C.	27	
D	22	4' 0"	# 4 @ 12 O.C.	59	
E	26	9' 10"	# 4 @ 4 O.C.	171	
F	22	2' 6"	# 4 @ 12 O.C.	37	
G	18	9' 10"	# 4 @ 4 O.C.	118	
CLEANOUT SCHEDULE					
H	5	17' 10 1/2"	# 4 @ 24 O.C.	60	
J	5	19' 10"	# 4 @ 24 O.C.	66	
K	5	19' 9"	# 4 @ 24 O.C.	66	
L	29	9' 10"	# 4 @ 24 O.C.	190	
TOTAL WEIGHT OF REBAR (LBS.)				1078	
TOTAL LENGTH OF REBAR (FT.)				1613	
WIRE MESH		6 X 6-10 GA.		609 SQ FT	

REBAR LAYOUT

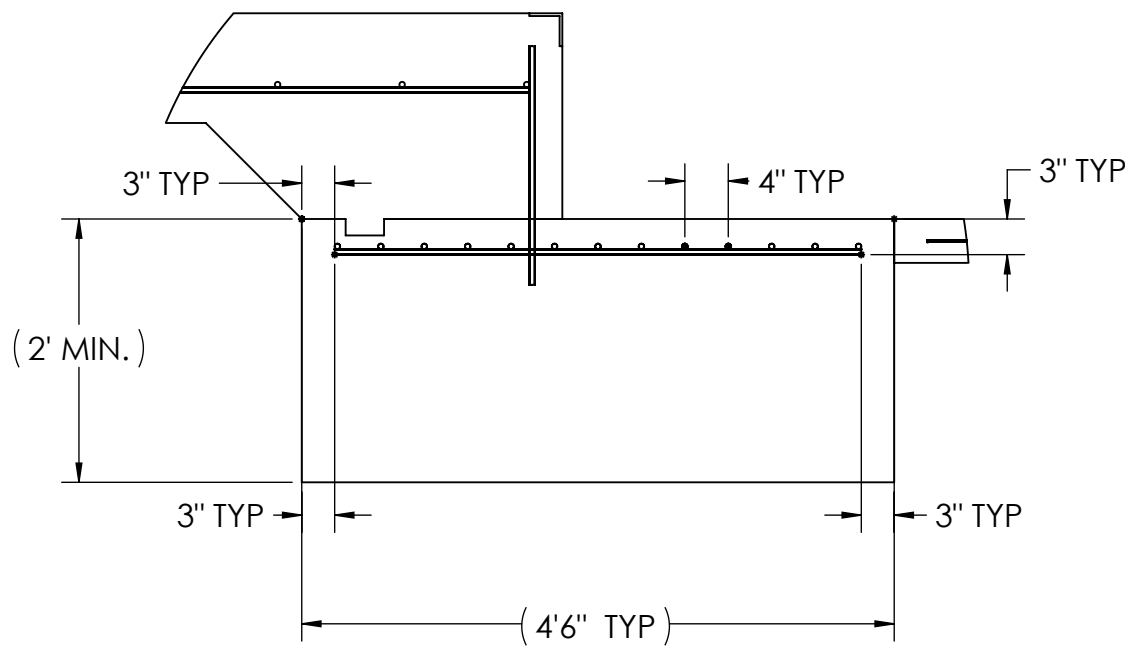


APPROACH STANDARD VIEWS

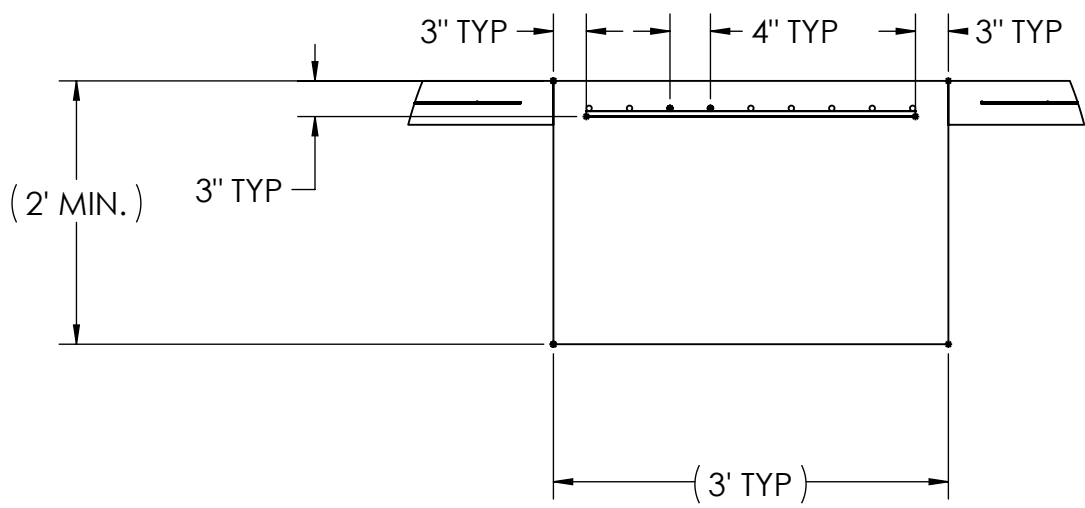
NOTES: 1) LEFT AND RIGHT APPROACHES ARE MIRROR IMAGES OF EACH OTHER AND CONTAIN AN IDENTICAL PART LIST







APPROACH PIER STANDARD VIEWS



PIER STANDARD VIEWS



DESIGNED BY DATE S. JOHNSON 02/22/2017		DRAWN BY DATE S. JOHNSON 02/22/2017		FIELD ERECTING DATE S. JOHNSON 03/27/2017		<div></div>	
TREATMENT NONE		THIS DRAWING AND INFORMATION CONTAINED HEREIN IS AND REMAINS THE PROPERTY OF RICE LAKE WEIGHING SYSTEMS INC. HEREINAFTER REFERRED TO AS RLS. IT MAY BE USED FOR THE RLS "PROPOSAL" AND/OR ITS CUSTOMER'S PURPOSES. IT SHALL NOT BE REPRODUCED OR COPIED WITHOUT RLS'S SPECIFIC WRITTEN CONSENT AND SHALL BE IMMEDIATELY RETURNED UPON REQUEST.		UNLESS OTHERWISE SPECIFIED UNITS TO BE IN INCHES ALL THREADS TO BE CLASS 2 ALL DIMENSIONS APPLICABLE AFTER TREATMENT			
NUMBER OF CRANES 1		<div></div> DO NOT SCALE MINIMUM CRANE CAPACITY: 100,000		TOLERANCES DRAWING TOLERANCES UNLESS OTHERWISE SPECIFIED XX: ± XXX: ± ANGLE: ±		DESCRIPTION FOUNDATION, CONCRETE PIER 70' x 10' OTR SERIES TRUCK SCALE	
ESTIMATED WEIGHT (POUNDS)		<div></div>		SCALE 1:48		SHEET 3 OF 3	
				BIRD ANGLE PROJECTION <div></div>		MATERIAL 180413	
				FIN		REV A	