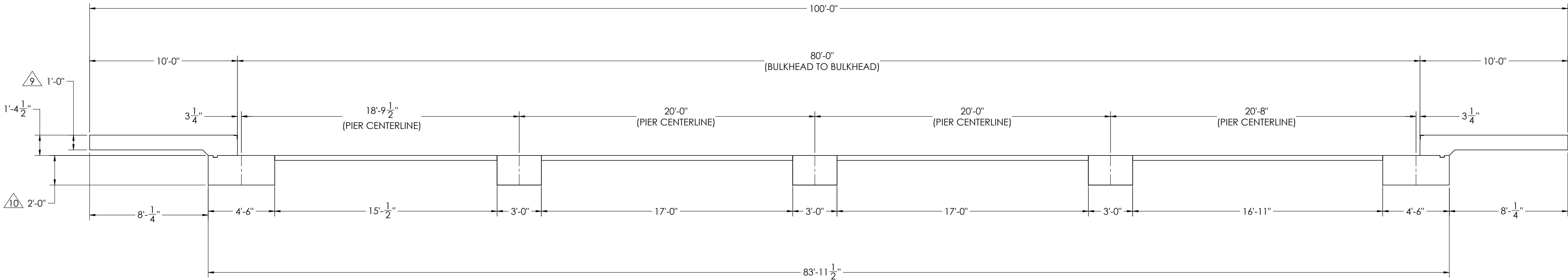
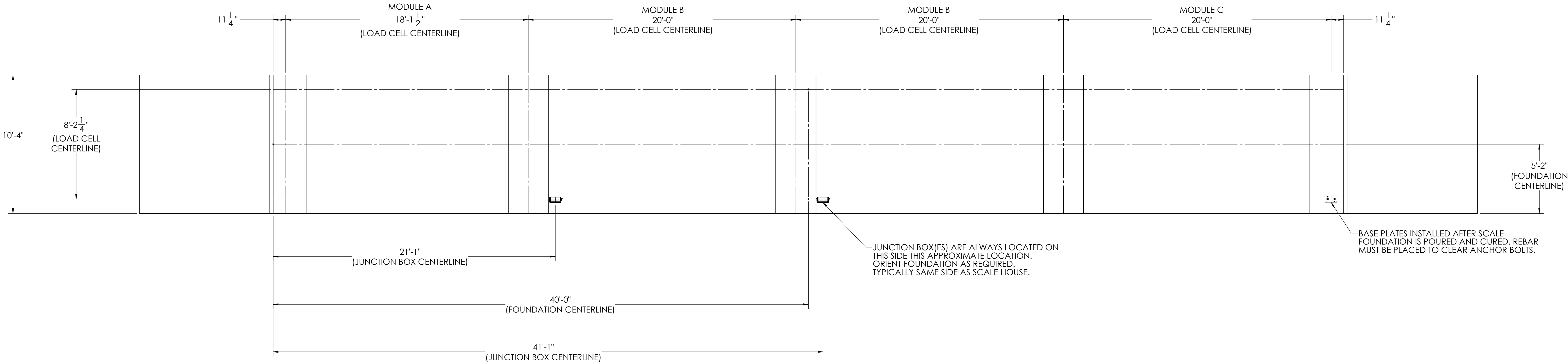


DETAILS

REVISION				
REV.	ECO	DESCRIPTION	INIT	DATE
A		ENGINEERING RELEASE	SPJ	02/24/2017



NOTES:

- 1) CONCRETE: $f_c = 3000$ PSI @ 28 DAYS.
- 2) REINFORCING STEEL: DEFORMED BARS ASTM A615 GRADE 60.
- 3) STATE AND LOCAL AGENCIES MAY HAVE VARIOUS REQUIREMENTS FOR APPROACH RAMP LENGTH, PITCH, AND FOR CLEAN OUT HEIGHT. PLEASE CHECK WITH ALL AGENCIES PRIOR TO CONSTRUCTION.
- 4) MONOLITHIC POUR IS ALLOWED AT CONTRACTOR'S DISCRETION.
- 5) DEVELOP AND MAINTAIN SITE GRADES WHICH WILL RAPIDLY DRAIN SURFACE AND ROOF RUN-OFF AWAY FROM FOUNDATION.
- 6) FOOTINGS HAVE BEEN DESIGNED FOR A MINIMUM SOIL PRESSURE OF 2500 PSF. IT WILL BE THE RESPONSIBILITY OF OTHERS TO VERIFY THIS VALUE.
- 7) WHERE REINFORCING BARS ARE SHOWN CONTINUOUS, LAP SPLICE BARS 40 DIAMETERS.
- 8) APPROACHES TO BE A COMMON PLANE WITHIN 1/4".

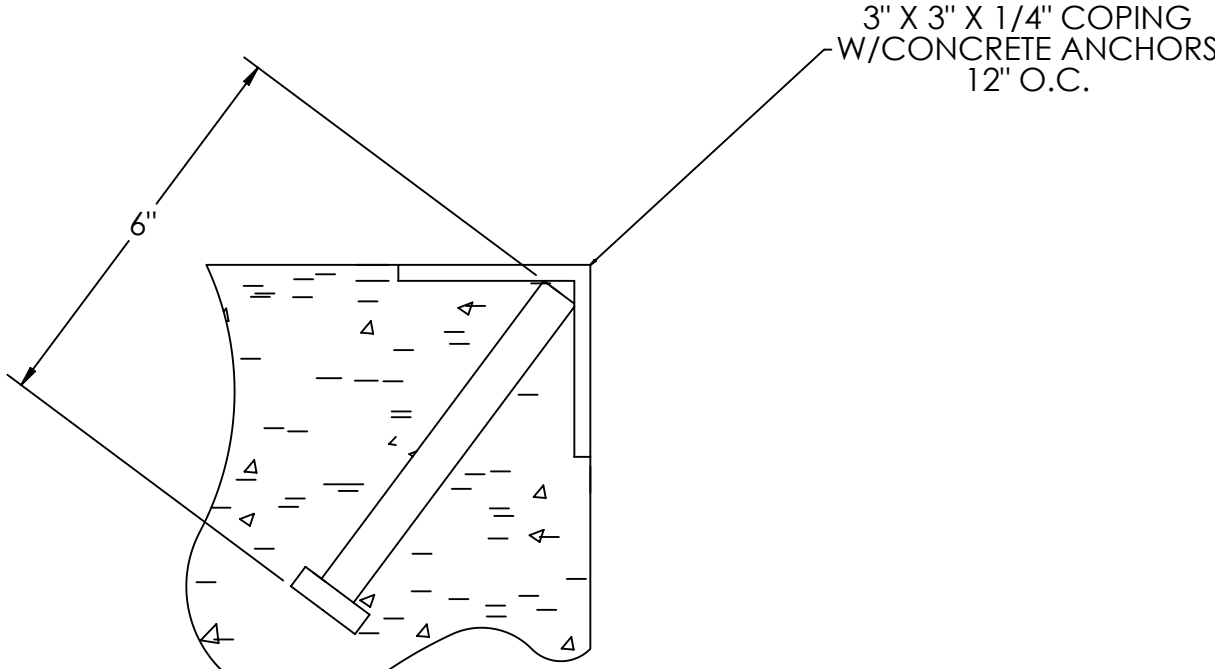
- APPROACH THICKNESS MAY BE 10" MINIMUM WHERE ALLOWED BY STATE REGULATIONS
- FOUNDATION MUST EXTEND A MINIMUM OF 12" BELOW THE FROST PENETRATION LINE

DESIGNED BY/DATE S. JOHNSON 02/24/2017	DRAWN BY/DATE S. JOHNSON 02/24/2017	PIER APPROVAL/DATE S. JOHNSON 03/27/2017	RICE LAKE WEIGHING SYSTEMS	
TREATMENT NONE	THIS DRAWING AND INFORMATION CONTAINED HEREIN IS AND REMAINS THE PROPERTY OF RICE LAKE WEIGHING SYSTEMS INC. - HEREINAFTER REFERRED TO AS RLWS. IT MAY BE USED ONLY FOR RLWS' PROPOSAL AND/OR ITS CUSTOMER'S ORDERS. IT SHALL NOT BE DISCLOSED OR COPIED WITHOUT RLWS SPECIFIC WRITTEN CONSENT AND SHALL BE IMMEDIATELY RETURNED UPON REQUEST.		UNLESS OTHERWISE SPECIFIED UNITS TO BE INCHES ALL THREADS TO BE CLASS 2 ALL DIMENSIONS APPLICABLE AFTER TREATMENT	
NUMBER OF CRANES: 	DO NOT SCALE DRAWING SURFACE FINISH ✓	TOLERANCES DRAWING TOLERANCES UNLESS OTHERWISE SPECIFIED .XX: ± .XXX: ± ANGLE: ±	FOUNDATION, CONCRETE PIER 80' X 10' OTR SERIES TRUCK SCALE	
MINIMUM CRANE CAPACITY: 	SCALE 1:45	SHEET 1 OF 3	MATERIAL	
ESTIMATED WEIGHT (POUNDS) 	THIRD ANGLE PROJECTION 	FTN	180424	REV. A

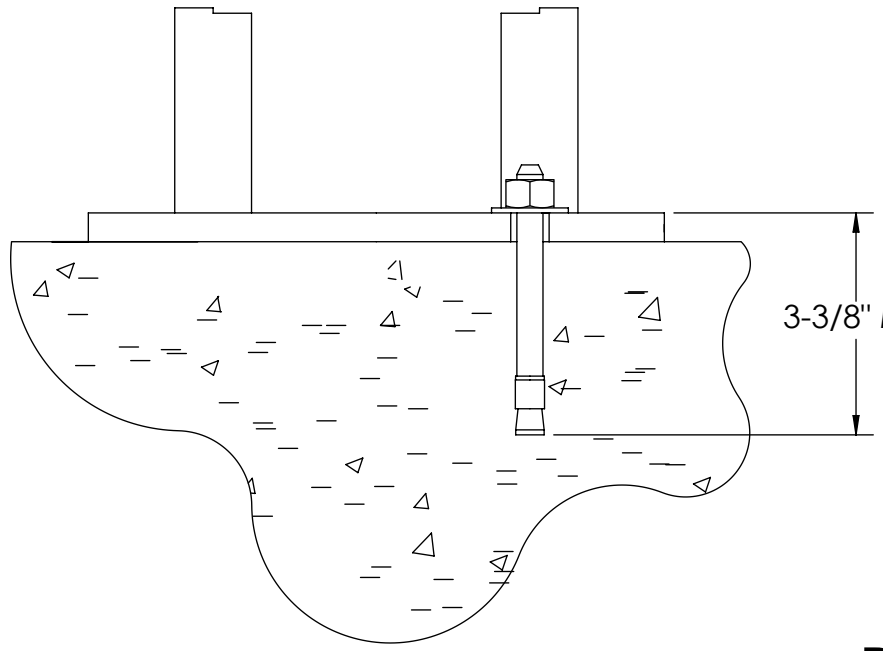
CONCRETE SCHEDULE			
		VOLUME (CUBIC YARDS)	
APPROACHES		8.3	
CLEANOUT		8.4	
PIERS		13.8	
TOTAL		30.5	
MISC. STEEL			
PIT COPING	3 X 3 X 1/4	21 LN .FT	103 LBS

VOLUME SHOWN FOR STATED PIER DEPTH.
ADD ADDITIONAL CONCRETE FOR
DEEPER PIERS AS NEEDED.

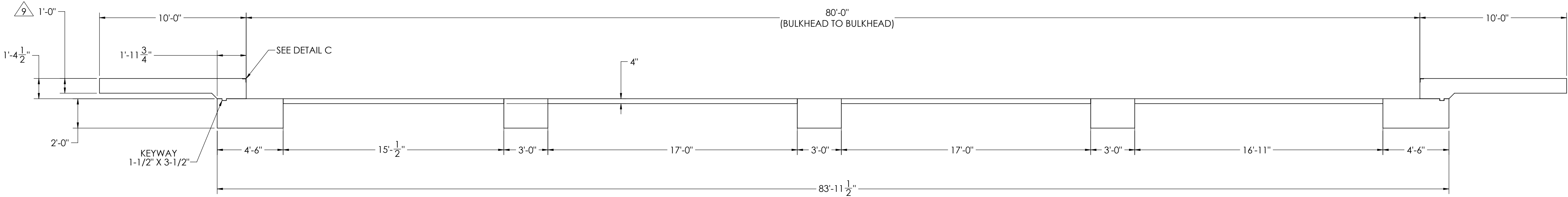
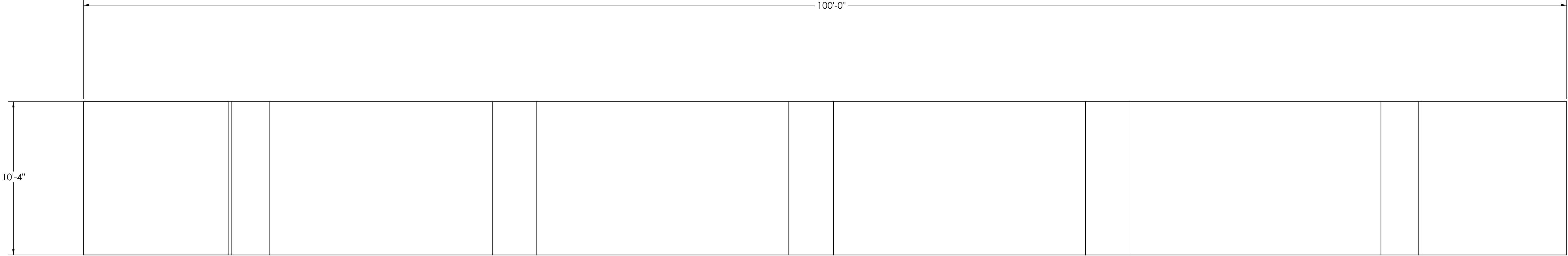
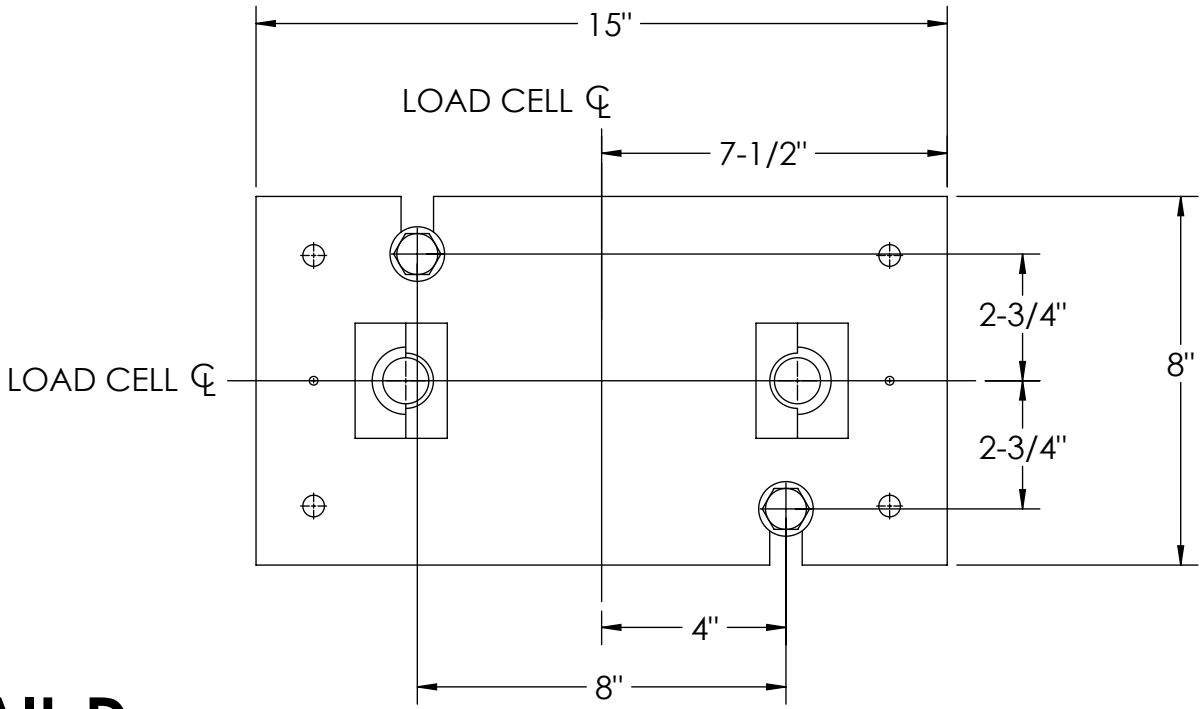
CONCRETE LAYOUT



DETAIL C



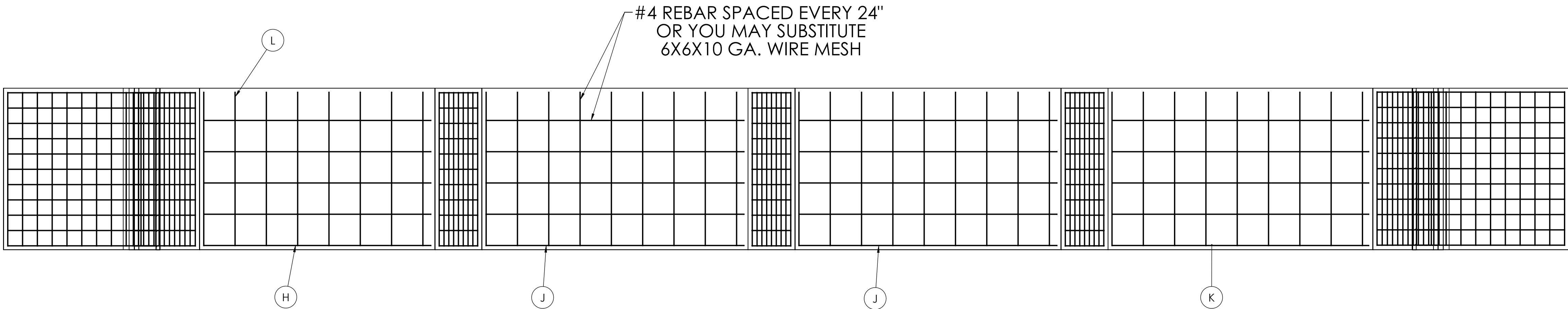
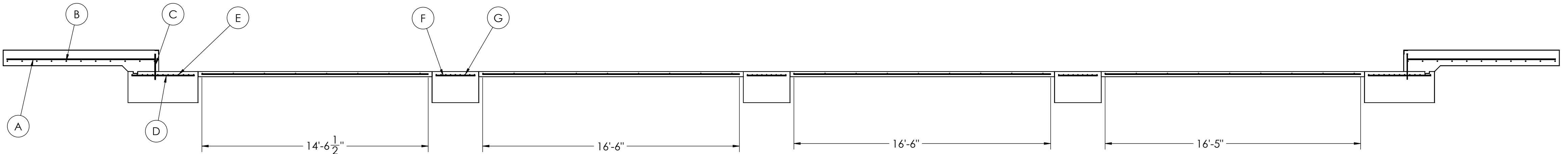
DETAIL D



DESIGNED BY: JGMS S. JOHNSON 02/24/2017	DRAWN BY: JGMS S. JOHNSON 02/24/2017	PIER APPROVAL DATE S. JOHNSON 03/27/2017	RICE LAKE WEIGHING SYSTEMS	
TREATMENT NONE	THIS DRAWING AND INFORMATION CONTAINED HEREIN IS AND REMAINS THE PROPERTY OF RICE LAKE WEIGHING SYSTEMS INC. - HEREINAFTER REFERRED TO AS RLWS. IT MAY BE USED ONLY FOR RLWS' PROPOSAL AND/OR ITS CUSTOMER'S ORDERS. IT SHALL NOT BE DISCLOSED OR COPIED WITHOUT RLWS' SPECIFIC WRITTEN CONSENT AND SHALL BE IMMEDIATELY RETURNED UPON REQUEST.	UNLESS OTHERWISE SPECIFIED UNITS TO BE INCHES ALL THREADS TO BE CLASS 2 ALL DIMENSIONS APPLICABLE AFTER TREATMENT	DESCRIPTION FOUNDATION, CONCRETE PIER 80' X 10' OTR SERIES TRUCK SCALE	
NUMBER OF CRANES: MINIMUM CRANE CAPACITY: ESTIMATED WEIGHT (POUNDS)	DO NOT SCALE DRAWING SURFACE FINISH TOLERANCES DRAWING TOLERANCES UNLESS OTHERWISE SPECIFIED .XX: .XXX: ANGLE:	SCALE 1:45 SHEET 2 OF 3 MATERIAL THIRD ANGLE PROJECTION FPM	180424	REV A

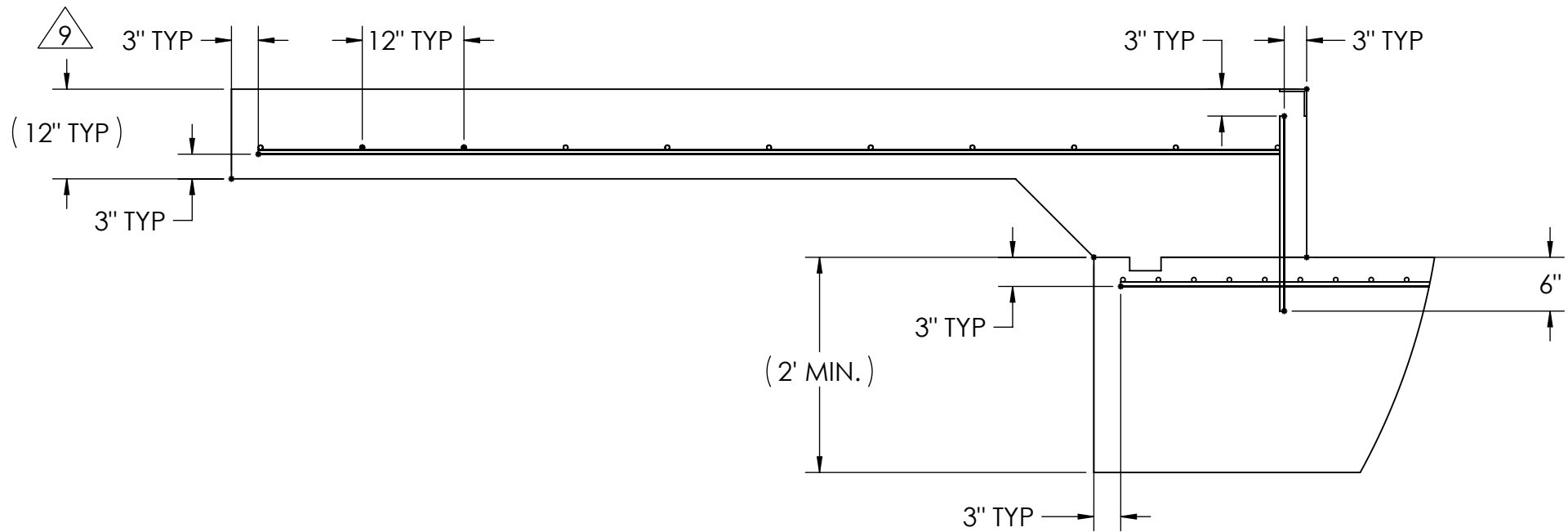
MATERIAL REQUIREMENTS					
REBAR SCHEDULE					
BAL. NO.	QUANTITY	LENGTH (FT-IN.)	DESCRIPTION	WEIGHT	
A	22	9' 6"	# 4 @ 12 O.C.	140	
B	22	9' 10"	# 4 @ 12 O.C.	145	
C	22	1' 7 1/2"	# 4 @ 12 O.C.	24	
D	22	4' 0"	# 4 @ 12 O.C.	59	
E	26	9' 10"	# 4 @ 4 O.C.	171	
F	33	2' 6"	# 4 @ 12 O.C.	55	
G	27	9' 10"	# 4 @ 4 O.C.	177	
CLEANOUT SCHEDULE					
H	5	14' 6 1/2"	# 4 @ 24 O.C.	49	
J	10	16' 6"	# 4 @ 24 O.C.	110	
K	5	16' 5"	# 4 @ 24 O.C.	55	
L	35	9' 10"	# 4 @ 24 O.C.	230	
TOTAL WEIGHT OF REBAR (LBS.)				1214	
TOTAL LENGTH OF REBAR (FT.)				1817	
WIRE MESH		6 X 6-10 GA.		681 SQ FT	

REBAR LAYOUT

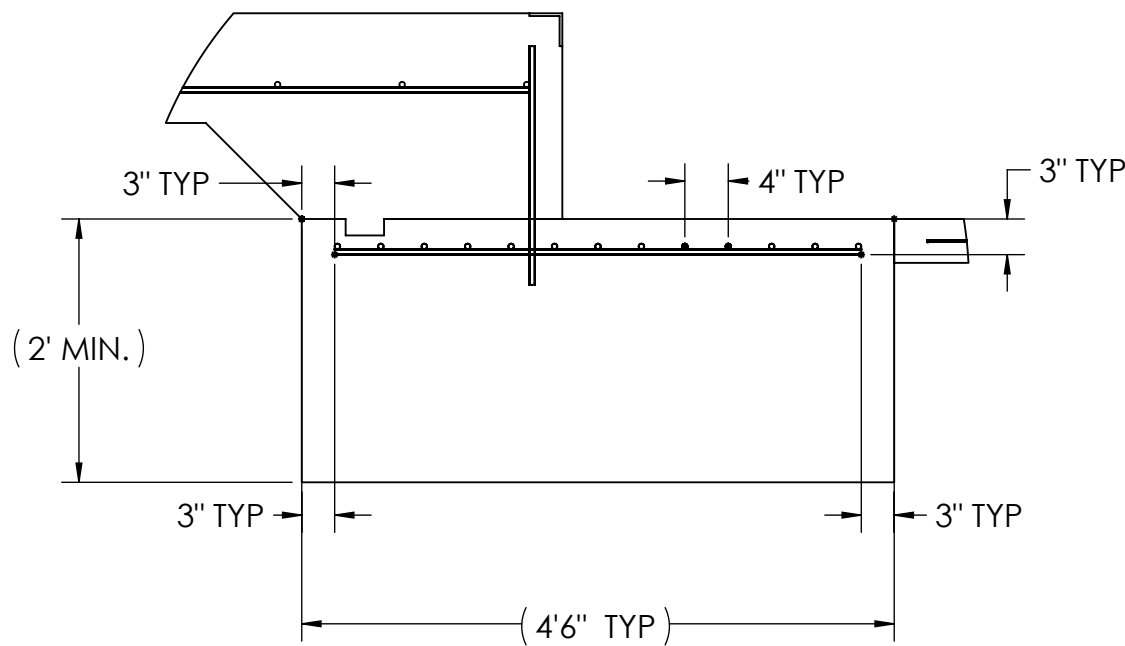


APPROACH STANDARD VIEWS

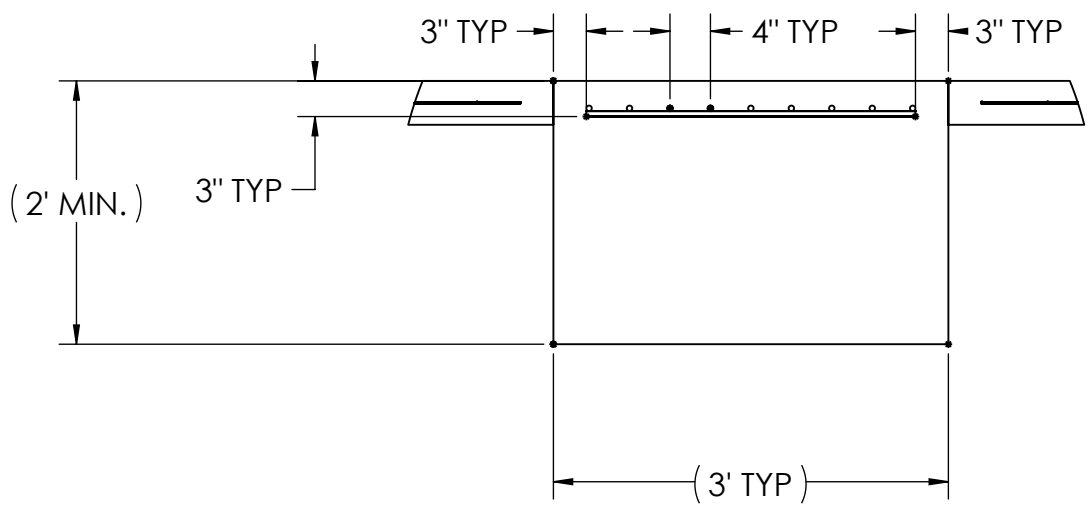
NOTES: 1) LEFT AND RIGHT APPROACHES ARE MIRROR IMAGES OF EACH OTHER AND CONTAIN AN IDENTICAL PART LIST






APPROACH PIER STANDARD VIEWS



PIER STANDARD VIEWS



DESIGNED BY DATE S. JOHNSON 02/24/2017		DRAWN BY DATE S. JOHNSON 02/24/2017		FIELD ERECT DATE S. JOHNSON 03/27/2017			
TREATMENT NONE		THIS DRAWING AND INFORMATION CONTAINED HEREIN IS AND REMAINS THE PROPERTY OF RICE LAKE WEIGHING SYSTEMS INC. HEREINAFTER REFERRED TO AS RLS. IT MAY BE USED FOR THE RLS' PROPOSAL AND/OR ITS CUSTOMER'S PROJECT. IT SHALL NOT BE REPRODUCED OR COPIED WITHOUT RLS'S SPECIFIC WRITTEN CONSENT AND SHALL BE IMMEDIATELY RETURNED UPON REQUEST.		UNLESS OTHERWISE SPECIFIED UNITS TO BE IN INCHES ALL THREADS TO BE CLASS 2 ALL DIMENSIONS APPLICABLE AFTER TREATMENT			
NUMBER OF CRANES MINIMUM CRANE CAPACITY (ESTIMATED WEIGHT POINTS)		 DO NOT SCALE DRAWING SURFACE FINISH ✓ ANGLE: ±		DESCRIPTION FOUNDATION, CONCRETE PIER 80' x 10' OTR SERIES TRUCK SCALE		SCALE 1:48	
		TOLERANCES DRAWING TOLERANCES UNLESS OTHERWISE SPECIFIED .XX; ± .XXX; ± ANGLE: ±		SHEET 3 OF 3		MATERIAL 180424	
				BIRD ANGLE PROJECTION 		REV A	