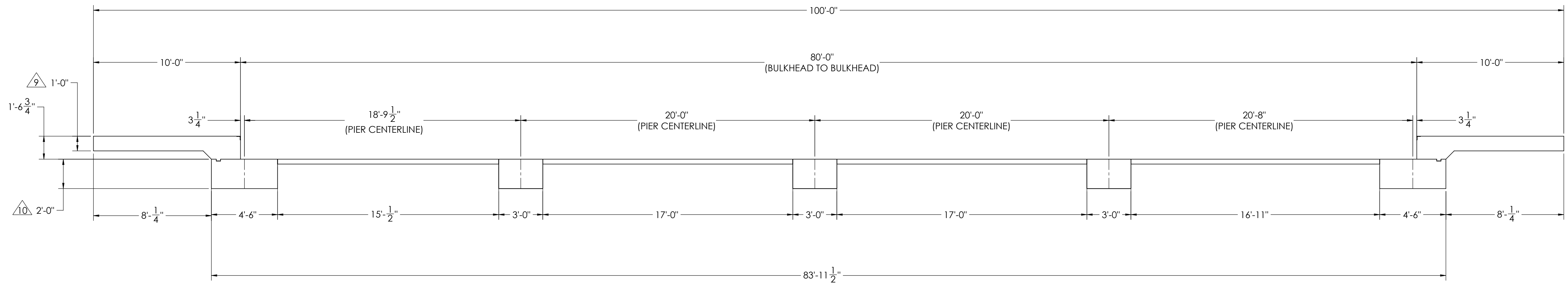
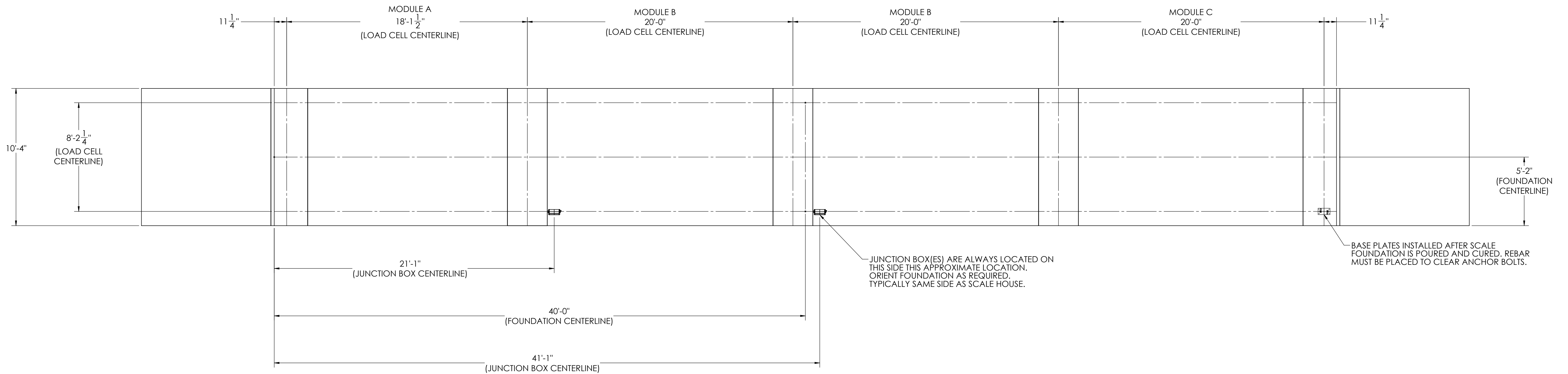


DETAILS

REVISION				
REV.	ECO	DESCRIPTION	INIT	DATE
A		ENGINEERING RELEASE	SPJ	02/24/2017







NOTES:

- 1) CONCRETE: F_C = 3000 PSI @ 28 DAYS.
- 2) REINFORCING STEEL: DEFORMED BARS ASTM A615 GRADE 60.
- 3) STATE AND LOCAL AGENCIES MAY HAVE VARIOUS REQUIREMENTS FOR APPROACH RAMP LENGTH, PITCH, AND FOR CLEAN OUT HEIGHT. PLEASE CHECK WITH ALL AGENCIES PRIOR TO CONSTRUCTION.
- 4) MONOLITHIC POUR IS ALLOWED AT CONTRACTOR'S DISCRETION.
- 5) DEVELOP AND MAINTAIN SITE GRADES WHICH WILL RAPIDLY DRAIN SURFACE AND ROOF RUN-OFF AWAY FROM FOUNDATION.
- 6) FOOTINGS HAVE BEEN DESIGNED FOR A MINIMUM SOIL PRESSURE OF 2500 PSF. IT WILL BE THE RESPONSIBILITY OF OTHERS TO VERIFY THIS VALUE.
- 7) WHERE REINFORCING BARS ARE SHOWN CONTINUOUS, LAP SPlice BARS 40 DIAMETERS
- 8) APPROACHES TO BE A COMMON PLANE WITHIN 1/4".

9. APPROACH THICKNESS MAY BE 10" MINIMUM WHERE ALLOWED BY STATE REGULATIONS.

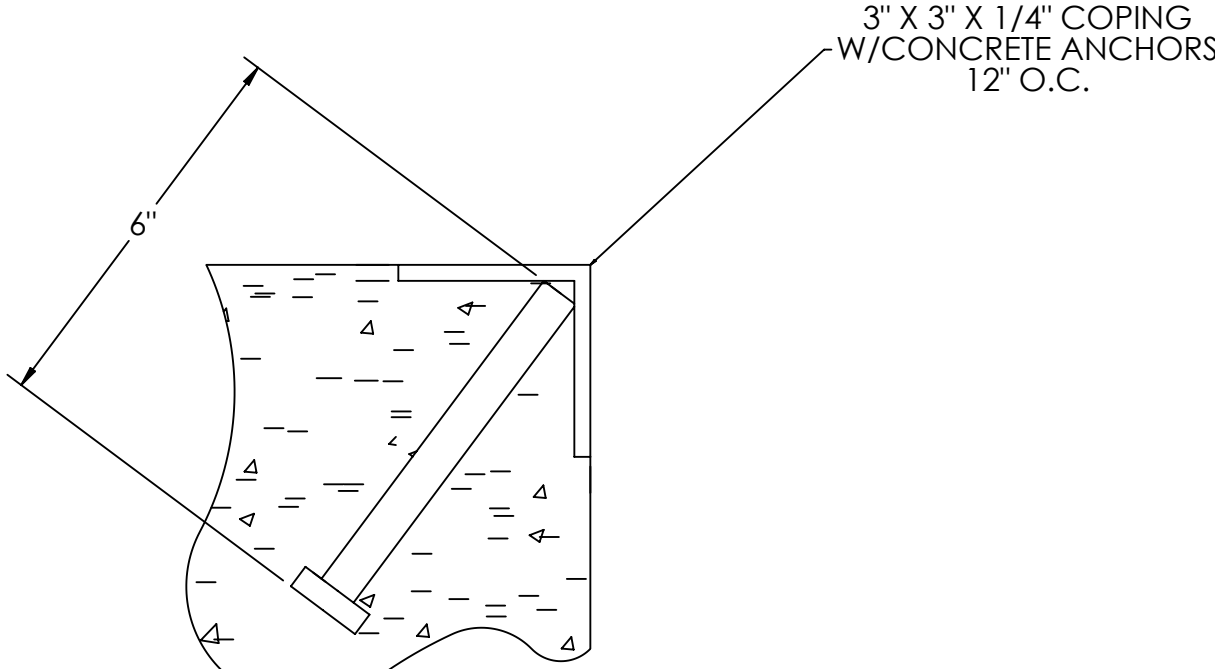
10. FOUNDATION MUST EXTEND A MINIMUM OF 12" BELOW THE FROST PENETRATION LINE

(ISSUED BY DATE) S. JOHNSON <u>02/24/2017</u>		(DRAWN BY DATE) S. JOHNSON <u>02/24/2017</u>		(FIELD PREPARED DATE) S. JOHNSON <u>03/27/2017</u>			
(TREATMENT) NONE		THIS DRAWING AND INFORMATION CONTAINED HEREIN IS AND REMAINS THE PROPERTY OF RICE LAKE WEIGHING SYSTEMS, INC. HEREINAFTER REFERRED TO AS "RICE LAKE". IT IS TO BE USED ONLY FOR THE PURPOSES, PURPOSES, AND/OR USES SPECIFIED HEREIN. IT SHALL NOT BE REPRODUCED, COPIED, OR TRANSMITTED IN ANY FORM OR BY ANY MEANS WITHOUT REWRITING SPECIFIC WRITTEN CONSENT AND SHALL BE IMMEDIATELY RETURNED UPON REQUEST.		UNLESS OTHERWISE SPECIFIED UNITS SHALL BE INCHES ALL THREADS TO BE CLASS 2 ALL DIMENSIONS APPLICABLE AFTER TREATMENT			
(NUMBER OF CRANES) 		(TOLERANCES) DO NOT SCALE SURFACE FINISH .XX: ± .XXX: ± ✓ ANGLE: ±		(DESCRIPTION) FOUNDATION, CONCRETE PIER 80' X 10' OTR SERIES TRUCK SCALE		(SCALE) SHEET MATERIAL 1:45 1 OF 3	
(ESTIMATED WEIGHT (POUNDS)) 		(DRAWING TOLERANCES) UNLESS OTHERWISE SPECIFIED .XX: ± .XXX: ± ✓ ANGLE: ±		(THIRD ANGLE PROJECTION) 		(REV) 180425 A	

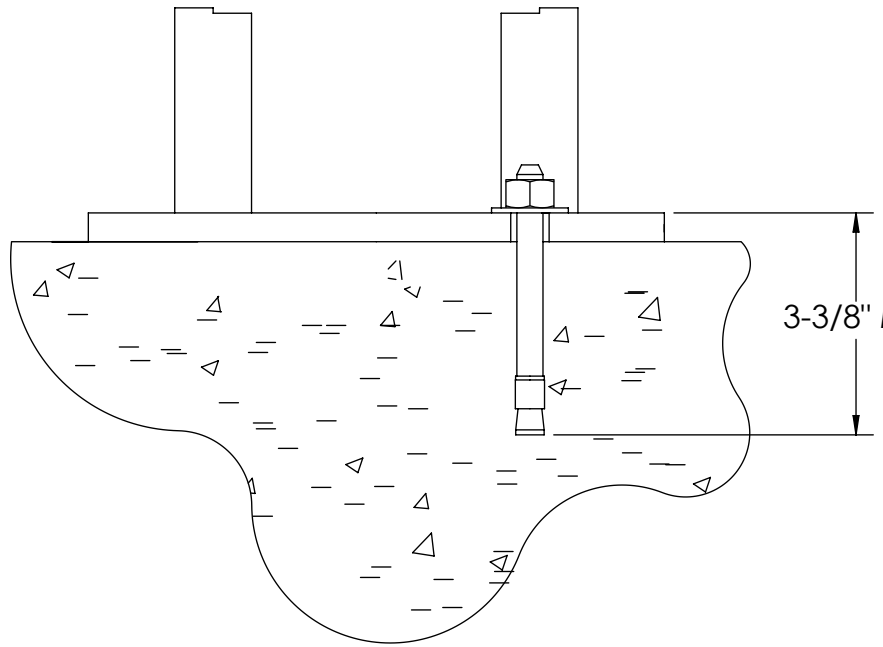
CONCRETE SCHEDULE			
		VOLUME (CUBIC YARDS)	
APPROACHES		8.7	
CLEANOUT		8.5	
PIERS		13.8	
TOTAL		30.9	
MISC. STEEL			
PIT COPING	3 X 3 X 1/4	21 LN. FT	103 LBS

VOLUME SHOWN FOR STATED PIER DEPTH.
ADD ADDITIONAL CONCRETE FOR
DEEPER PIERS AS NEEDED.

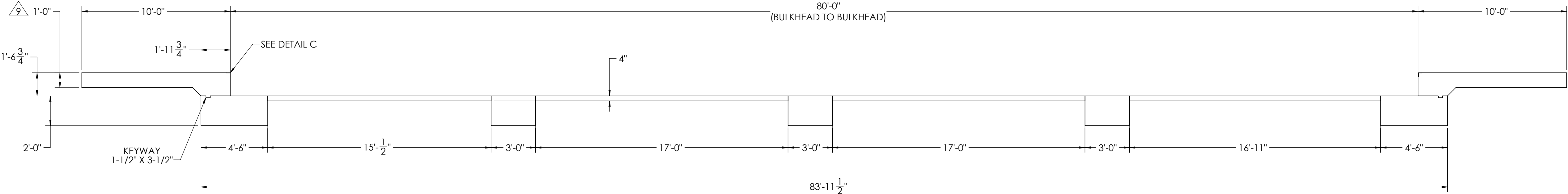
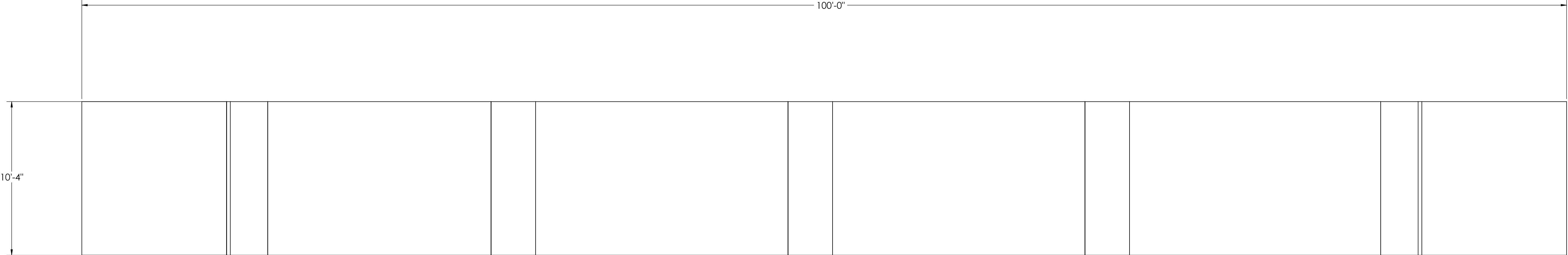
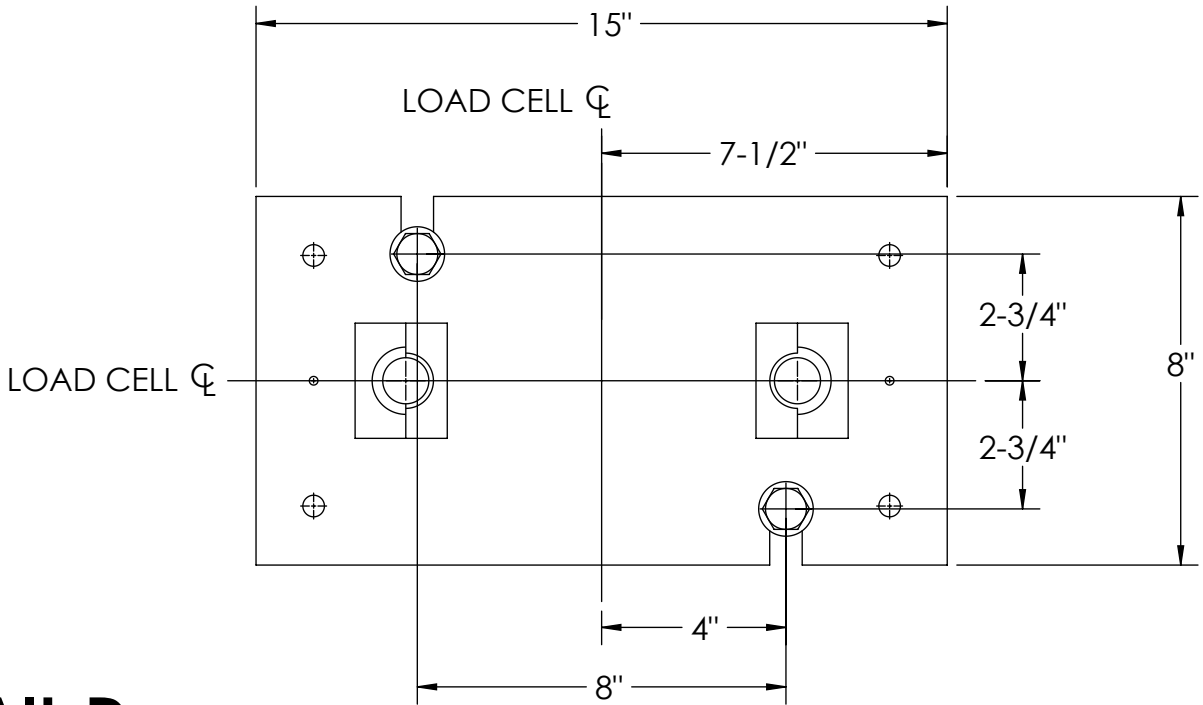
CONCRETE LAYOUT





DETAIL C

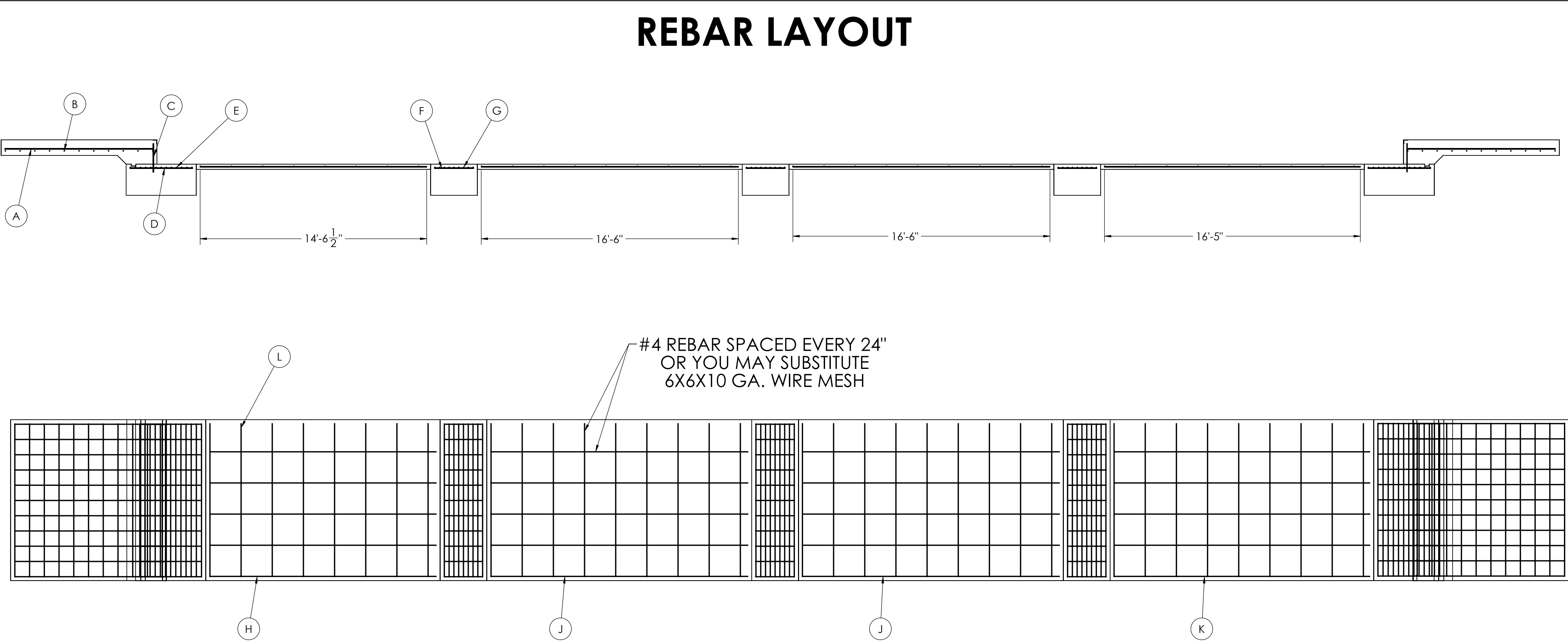


DETAIL D



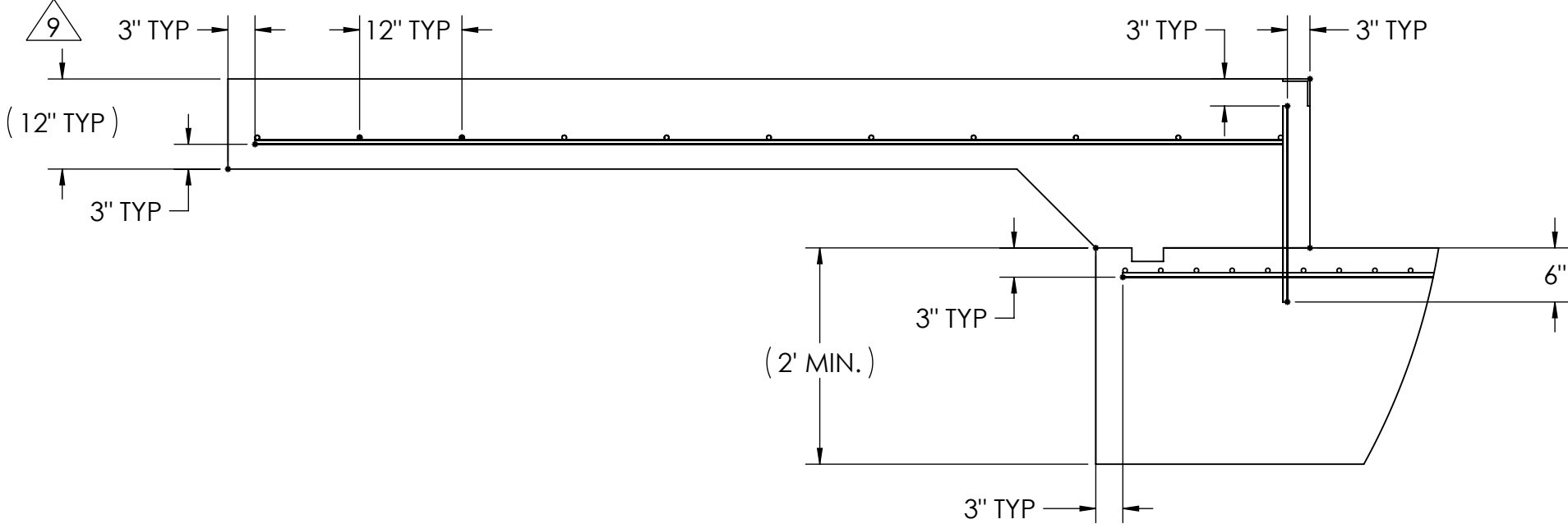
DESIGNED BY DATE S. JOHNSON 02/24/2017		DRAWN BY DATE S. JOHNSON 02/24/2017		PIER APPROVAL DATE S. JOHNSON 03/27/2017		<div>RICE LAKE WEIGHING SYSTEMS</div>	
TREATMENT NONE		THIS DRAWING AND INFORMATION CONTAINED HEREIN IS AND REMAINS THE PROPERTY OF RICE LAKE WEIGHING SYSTEMS INC. HEREINAFTER REFERRED TO AS RLWS. IT MAY BE USED ONLY FOR RLWS' PROPOSAL AND/OR ITS CUSTOMER'S ORDERS. IT SHALL NOT BE DISCLOSED OR COPIED WITHOUT RLWS SPECIFIC WRITTEN CONSENT AND SHALL BE IMMEDIATELY RETURNED UPON REQUEST.		UNLESS OTHERWISE SPECIFIED UNITS TO BE INCHES ALL THREADS TO BE CLASS 2 ALL DIMENSIONS APPLICABLE AFTER TREATMENT			
NUMBER OF CRANES: MINIMUM CRANE CAPACITY: ESTIMATED WEIGHT (POUNDS):		<div></div> <div>DO NOT SCALE DRAWING SURFACE FINISH ✓</div>		TOLERANCES DRAWINGS TOLERANCES UNLESS OTHERWISE SPECIFIED XX: XXX: ANGLE:		DESCRIPTION FOUNDATION, CONCRETE PIER 80' X 10' OTR SERIES TRUCK SCALE	
				SCALE 1:45		SHEET 2 OF 3	
				THIRD ANGLE PROJECTION 		MATERIAL 180425	
						REV A	

MATERIAL REQUIRMENTS				
REBAR SCHEDULE				
BAL. NO.	QUANTITY	LENGTH (FT-IN.)	DESCRIPTION	WEIGHT
A	22	9' 6"	# 4 @ 12 O.C.	140
B	22	9' 10"	# 4 @ 12 O.C.	145
C	22	1' 9 3/4"	# 4 @ 12 O.C.	27
D	22	4' 0"	# 4 @ 12 O.C.	59
E	26	9' 10"	# 4 @ 4 O.C.	171
F	33	2' 6"	# 4 @ 12 O.C.	55
G	27	9' 10"	# 4 @ 4 O.C.	177
CLEANOUT SCHEDULE				
H	5	14' 6 1/2"	# 4 @ 24 O.C.	49
J	10	16' 6"	# 4 @ 24 O.C.	110
K	5	16' 5"	# 4 @ 24 O.C.	55
L	35	9' 10"	# 4 @ 24 O.C.	230
TOTAL WEIGHT OF REBAR (LBS.)				1216
TOTAL LENGTH OF REBAR (FT.)				1821
WIRE MESH				6 X 6-10 GA. 681 SQ FT

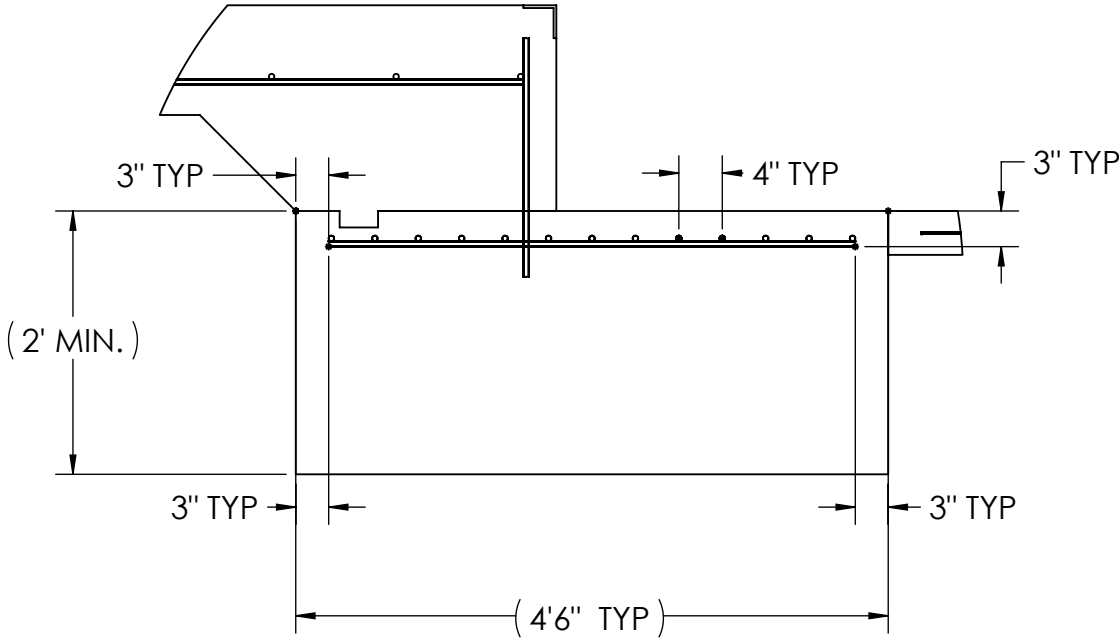


APPROACH STANDARD VIEWS

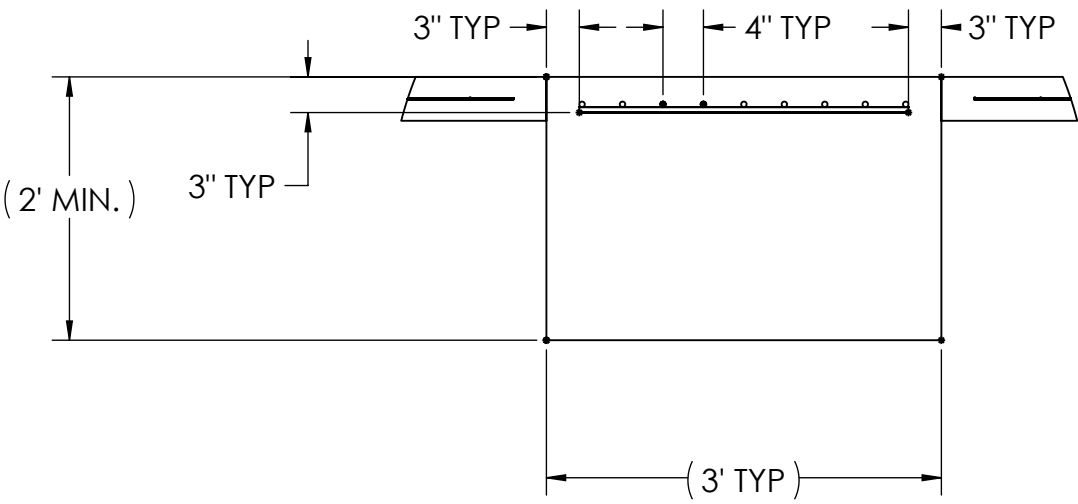
NOTES: 1) LEFT AND RIGHT APPROACHES ARE MIRROR IMAGES OF EACH OTHER AND CONTAIN AN IDENTICAL PART LIST



APPROACH PIER STANDARD VIEWS



PIER STANDARD VIEWS



DESIGNED BY: JGMS S. JOHNSON 02/24/2017	DRAWN BY: JGMS S. JOHNSON 02/24/2017	PIER APPROVAL: JGMS S. JOHNSON 03/27/2017	RICELAKE WEIGHING SYSTEMS	
TREATMENT NONE	THIS DRAWING AND INFORMATION CONTAINED HEREIN IS AND REMAINS THE PROPERTY OF RICE LAKE WEIGHING SYSTEMS INC. - HEREINAFTER REFERRED TO AS RLWS. IT MAY BE USED ONLY FOR RLWS' PROPOSAL AND/OR ITS CUSTOMER'S ORDERS. IT SHALL NOT BE DISCLOSED OR COPIED WITHOUT RLWS' SPECIFIC WRITTEN CONSENT AND SHALL BE IMMEDIATELY RETURNED UPON REQUEST.		UNLESS OTHERWISE SPECIFIED UNITS TO BE INCHES ALL THREADS TO BE CLASS 2 ALL DIMENSIONS APPLICABLE AFTER TREATMENT	
NUMBER OF CRANES: MINIMUM CRANE CAPACITY: ESTIMATED WEIGHT (POUNDS):	DO NOT SCALE DRAWING SURFACE FINISH ✓	TOLERANCES DRAWING TOLERANCES UNLESS OTHERWISE SPECIFIED .XX: ± .XXX: ± ANGLE: ±	SCALE 1:48	SHEET 3 OF 3
FOUNDATION, CONCRETE PIER 80' X 10'			OTR SERIES TRUCK SCALE	
THIRD ANGLE PROJECTION			180425	REV. A