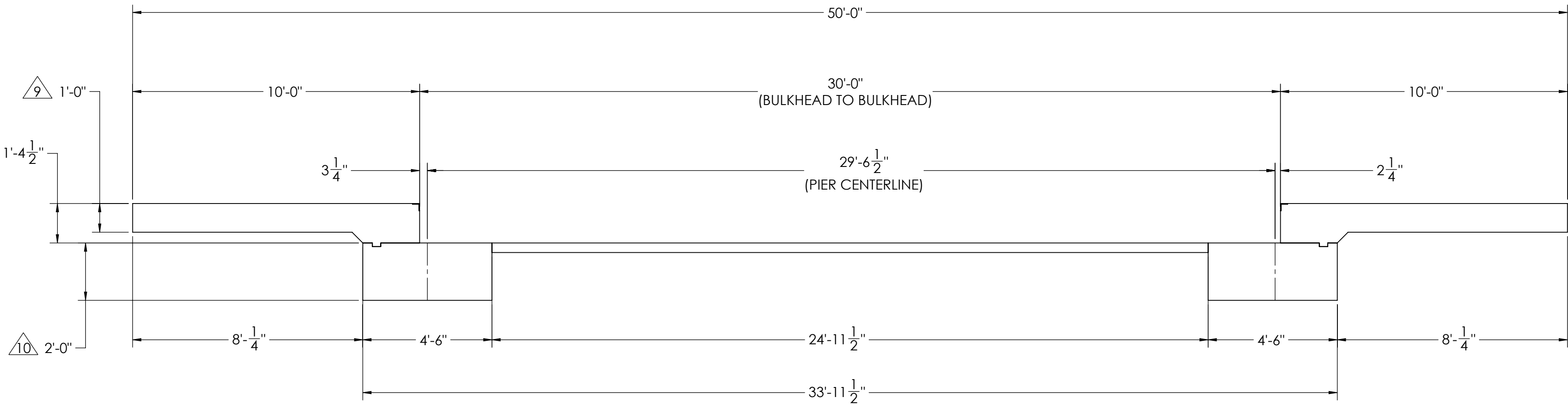
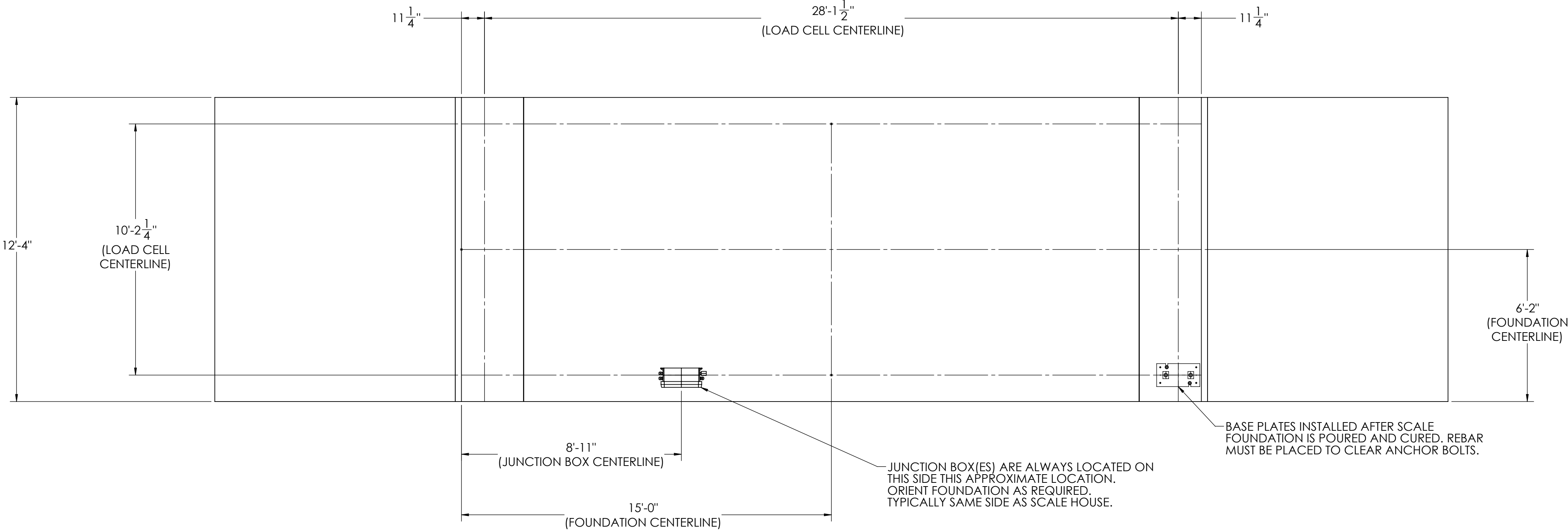


DETAILS



REVISION				
REV.	ECO	DESCRIPTION	INIT	DATE
A		ENGINEERING RELEASE	SPJ	05/25/2017



NOTES:

- 1) CONCRETE: f'c = 3000 PSI @ 28 DAYS.
- 2) REINFORCING STEEL: DEFORMED BARS ASTM A615 GRADE 60.
- 3) STATE AND LOCAL AGENCIES MAY HAVE VARIOUS REQUIREMENTS FOR APPROACH RAMP LENGTH, PITCH, AND FOR CLEAN OUT HEIGHT. PLEASE CHECK WITH ALL AGENCIES PRIOR TO CONSTRUCTION.
- 4) MONOLITHIC POUR IS ALLOWED AT CONTRACTOR'S DISCRETION.
- 5) DEVELOP AND MAINTAIN SITE GRADES WHICH WILL RAPIDLY DRAIN SURFACE AND ROOF RUN-OFF AWAY FROM FOUNDATION.
- 6) FOOTINGS HAVE BEEN DESIGNED FOR A MINIMUM SOIL PRESSURE OF 2500 PSF, IT WILL BE THE RESPONSIBILITY OF OTHERS TO VERIFY THIS VALUE.
- 7) WHERE REINFORCING BARS ARE SHOWN CONTINUOUS, LAP SPLICE BARS 40 DIAMETERS.
- 8) APPROACHES TO BE A COMMON PLANE WITHIN 1/4".

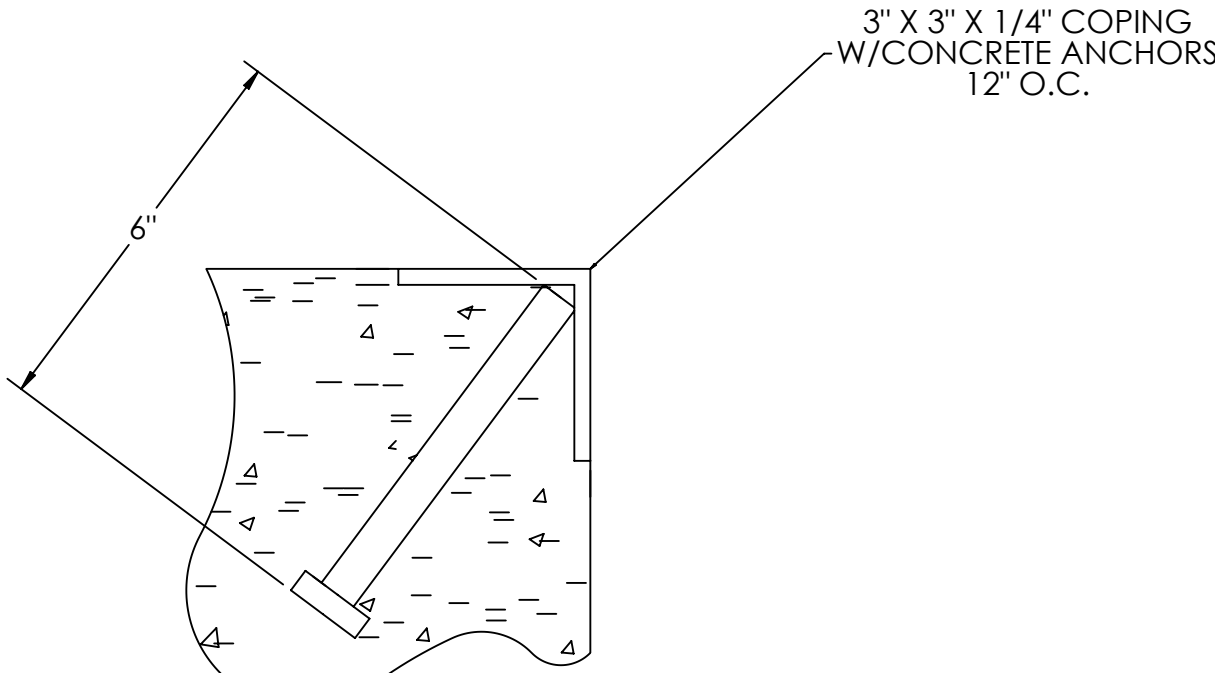
- △ APPROACH THICKNESS MAY BE 10" MINIMUM WHERE ALLOWED BY STATE REGULATIONS
- △ FOUNDATION MUST EXTEND A MINIMUM OF 12" BELOW THE FROST PENETRATION LINE

DESIGNED BY DATE S. JOHNSON 05/25/2017		DRAWN BY DATE S. JOHNSON 05/25/2017		PIER APPROVAL DATE S. JOHNSON 05/25/2017		<div><div></div><div><b>RICE LAKE</b></div><div>WEIGHING SYSTEMS</div></div>							
TREATMENT  NONE		THIS DRAWING AND INFORMATION CONTAINED HEREIN IS AND REMAINS THE PROPERTY OF RICE LAKE WEIGHING SYSTEMS INC. HEREINAFTER REFERRED TO AS RLWS. IT MAY BE USED ONLY FOR RLWS' PROPOSAL AND/OR ITS CUSTOMER'S ORDERS. IT SHALL NOT BE DISCLOSED OR COPIED WITHOUT RLWS' SPECIFIC WRITTEN CONSENT AND SHALL BE IMMEDIATELY RETURNED UPON REQUEST.		UNLESS OTHERWISE SPECIFIED UNITS TO BE INCHES ALL THREADS TO BE CLASS 2 ALL DIMENSIONS APPLICABLE AFTER TREATMENT									
NUMBER OF CRANES:  MINIMUM CRANE CAPACITY:  ESTIMATED WEIGHT (POUNDS):		<div><div></div><div>DO NOT SCALE DRAWING SURFACE FINISH XXX: ± .XXX: ± ✓ ANGLE: ±</div></div>		TOLERANCES DRAWING TOLERANCES UNLESS OTHERWISE SPECIFIED		DESCRIPTION FOUNDATION, CONCRETE PIER 30' X 12' OTR SERIES TRUCK SCALE		SCALE 1:35		SHEET 1 OF 3		MATERIAL	
						THIRD ANGLE PROJECTION 		177N		180500		REV A	

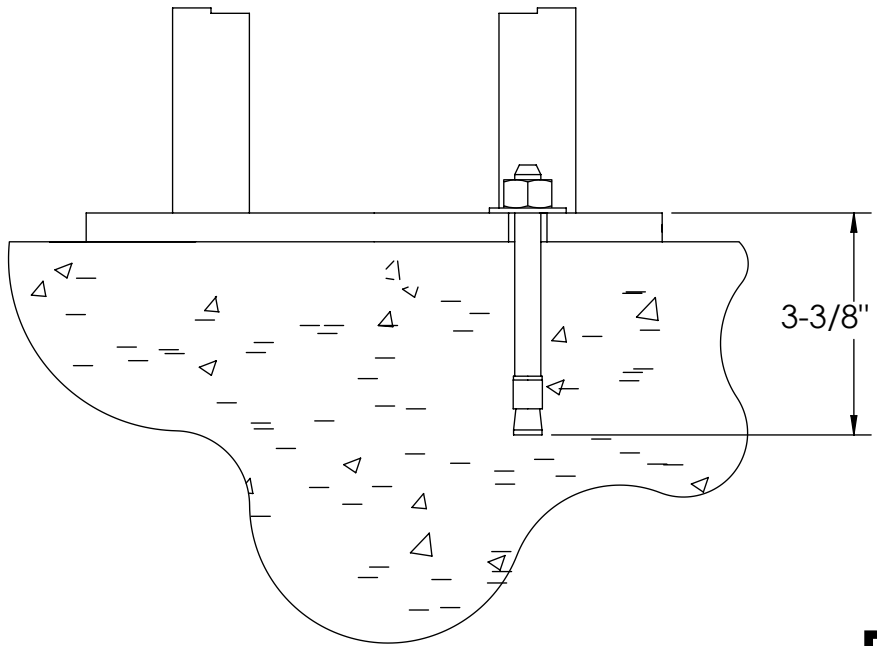
CONCRETE SCHEDULE			
		VOLUME (CUBIC YARDS)	
APPROACHES		9.9	
CLEANOUT		3.8	
PIERS		8.2	
TOTAL		22.0	
MISC. STEEL			
PIT COPING	3 X 3 X 1/4	25 LN. FT	123 LBS

VOLUME SHOWN FOR STATED PIER DEPTH.  
ADD ADDITIONAL CONCRETE FOR  
DEEPER PIERS AS NEEDED.

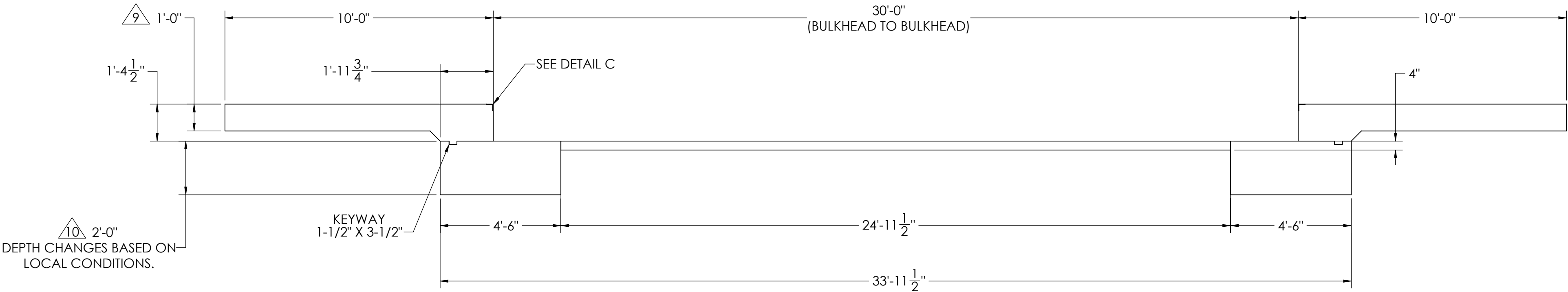
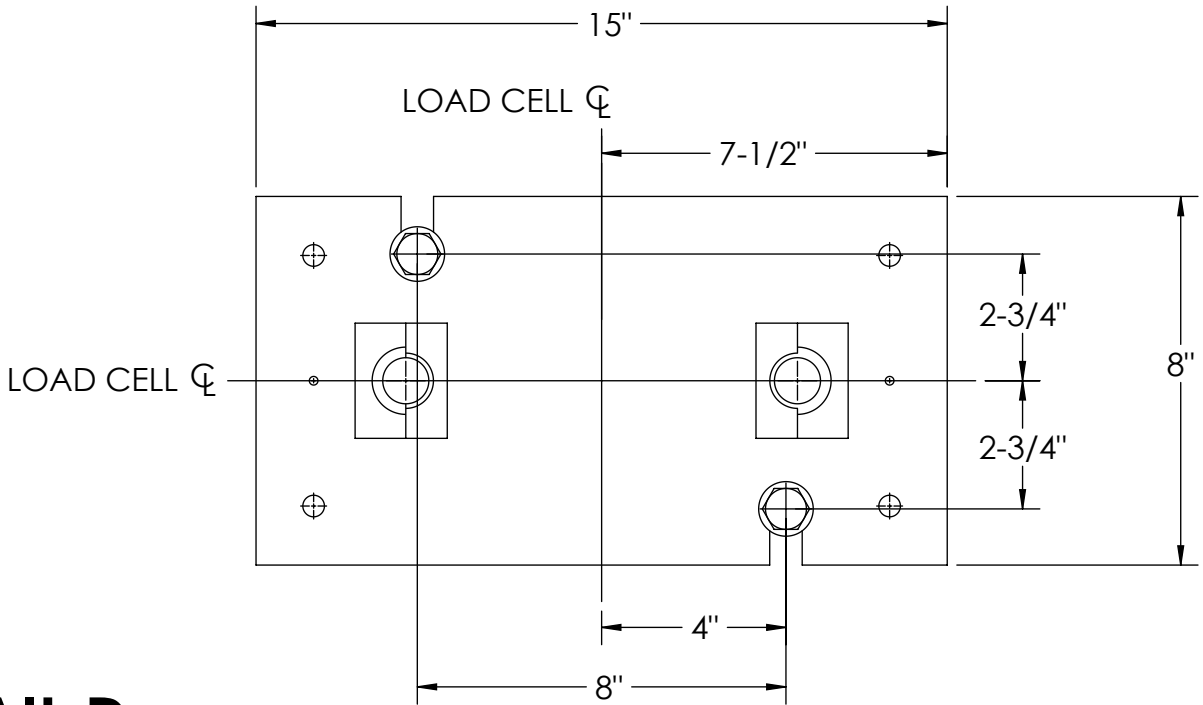
## CONCRETE LAYOUT



DETAIL C



DETAIL D



DESIGNED BY: JONAS S. JOHNSON 05/25/2017		DRAWN BY: JONAS S. JOHNSON 05/25/2017		PIER APPROVAL: JONAS S. JOHNSON 05/25/2017		<b>RICE LAKE</b> WEIGHING SYSTEMS	
TREATMENT  NONE		THIS DRAWING AND INFORMATION CONTAINED HEREIN IS AND REMAINS THE PROPERTY OF RICE LAKE WEIGHING SYSTEMS INC. - HEREINAFTER REFERRED TO AS RLWS. IT MAY BE USED ONLY FOR RLWS' PROPOSAL AND/OR ITS CUSTOMER'S ORDERS. IT SHALL NOT BE DISCLOSED OR COPIED WITHOUT RLWS' SPECIFIC WRITTEN CONSENT AND SHALL BE IMMEDIATELY RETURNED UPON REQUEST.		UNLESS OTHERWISE SPECIFIED UNITS TO BE INCHES ALL THREADS TO BE CLASS 2 ALL DIMENSIONS APPLICABLE AFTER TREATMENT		DESCRIPTION FOUNDATION, CONCRETE PIER 30' X 12' OTR SERIES TRUCK SCALE	
NUMBER OF CRANES:  MINIMUM CRANE CAPACITY:  ESTIMATED WEIGHT (POUNDS):		DO NOT SCALE DRAWING SURFACE FINISH XXX: XXX: ANGLE:		TOLERANCES DRAWING TOLERANCES UNLESS OTHERWISE SPECIFIED .XX: .XXX: ANGLE:		SCALE 1:35 SHEET 2 OF 3 MATERIAL 180500 REV A	

