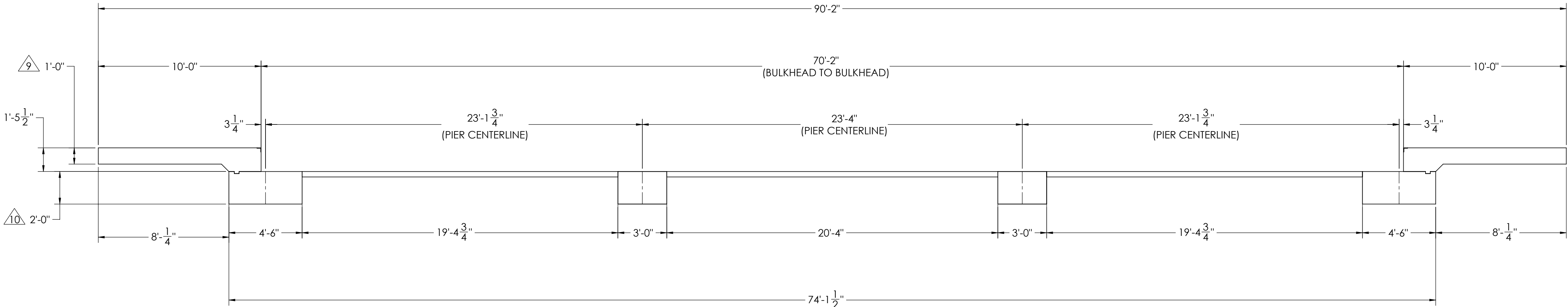
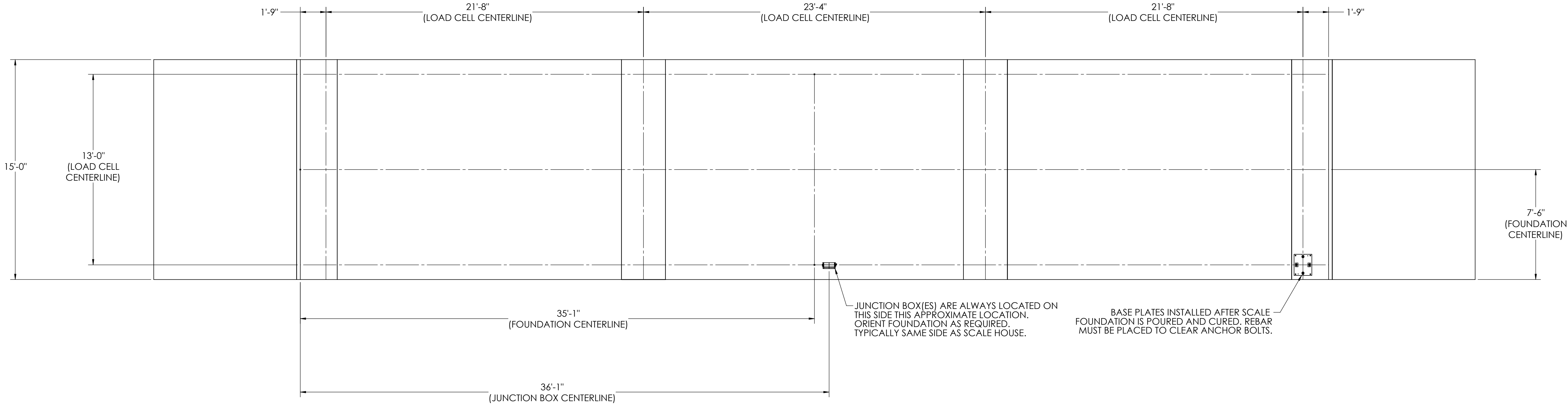


DETAILS

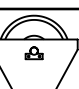

REVISION		DESCRIPTION	INIT	DATE
REV.	ECO			
A		ENGINEERING RELEASE	SPJ	02/28/2017



NOTES:

- 1) CONCRETE: f_c = 3000 PSI @ 28 DAYS.
- 2) REINFORCING STEEL: DEFORMED BARS ASTM A615 GRADE 60.
- 3) STATE AND LOCAL AGENCIES MAY HAVE VARIOUS REQUIREMENTS FOR APPROACH RAMP LENGTH, PITCH, AND FOR CLEAN OUT HEIGHT. PLEASE CHECK WITH ALL AGENCIES PRIOR TO CONSTRUCTION.
- 4) MONOLITHIC POUR IS ALLOWED AT CONTRACTOR'S DISCRETION.
- 5) DEVELOP AND MAINTAIN SITE GRADES WHICH WILL RAPIDLY DRAIN SURFACE AND ROOF RUN-OFF AWAY FROM FOUNDATION.
- 6) FOOTINGS HAVE BEEN DESIGNED FOR A MINIMUM SOIL PRESSURE OF 2500 PSF. IT WILL BE THE RESPONSIBILITY OF OTHERS TO VERIFY THIS VALUE.
- 7) WHERE REINFORCING BARS ARE SHOWN CONTINUOUS, LAP SPLICE BARS 40 DIAMETERS.
- 8) APPROACHES TO BE A COMMON PLANE WITHIN 1/4".

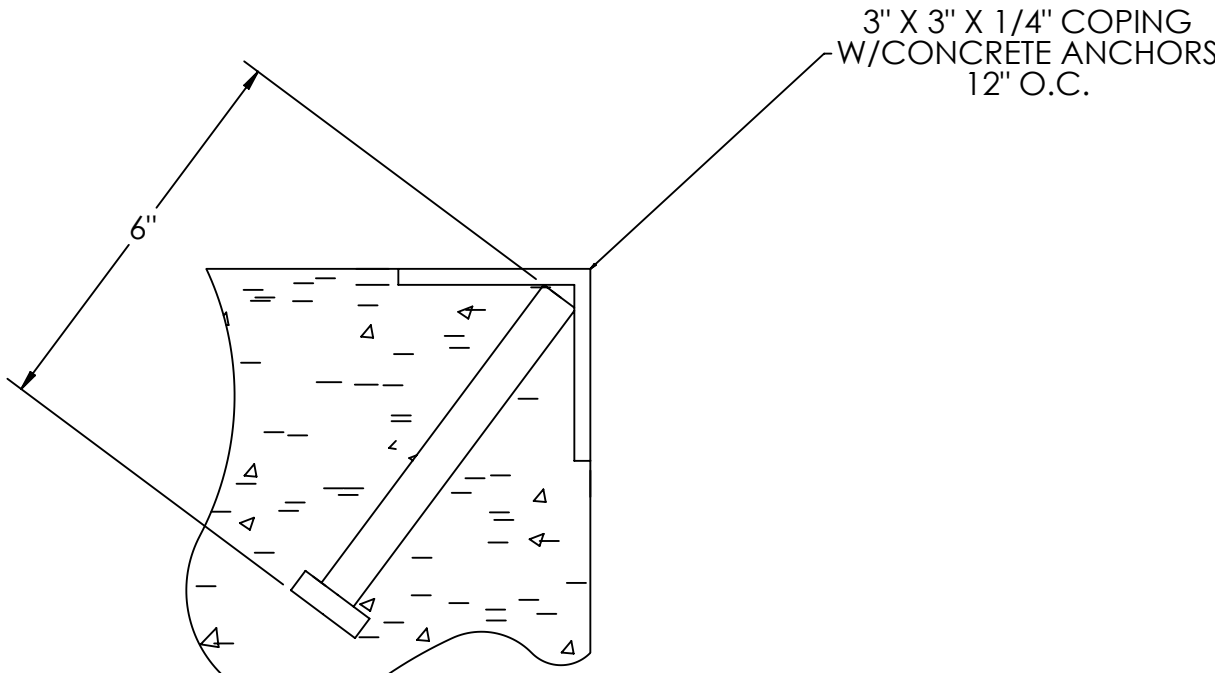
- △ APPROACH THICKNESS MAY BE 10" MINIMUM WHERE ALLOWED BY STATE REGULATIONS
- △ FOUNDATION MUST EXTEND A MINIMUM OF 12" BELOW THE FROST PENETRATION LINE

DESIGNED BY DATE S. JOHNSON/JG 02/27/2017		DRAWN BY DATE S. JOHNSON/JG 02/27/2017		PIER APPROVAL DATE S. JOHNSON/JG 03/30/2017		<div><div></div><div>RICE LAKE®</div><div>WEIGHING SYSTEMS</div></div>			
TREATMENT NONE		THIS DRAWING AND INFORMATION CONTAINED HEREIN IS AND REMAINS THE PROPERTY OF RICE LAKE WEIGHING SYSTEMS INC. - HEREINAFTER REFERRED TO AS RLWS. IT MAY BE USED ONLY FOR RLWS' PROPOSAL AND/OR ITS CUSTOMER'S ORDERS. IT SHALL NOT BE DISCLOSED OR COPIED WITHOUT RLWS SPECIFIC WRITTEN CONSENT AND SHALL BE IMMEDIATELY RETURNED UPON REQUEST.		UNLESS OTHERWISE SPECIFIED UNITS TO BE INCHES ALL THREADS TO BE CLASS 2 ALL DIMENSIONS APPLICABLE AFTER TREATMENT					
NUMBER OF CRANES: MINIMUM CRANE CAPACITY: ESTIMATED WEIGHT (POUNDS):		<div></div> <div>DO NOT SCALE DRAWING SURFACE FINISH ✓ ANGLE: ±</div>		TOLERANCES DRAWING TOLERANCES UNLESS OTHERWISE SPECIFIED XX: ± XXX: ± ANGLE: ±		DESCRIPTION FOUNDATION, CONCRETE PIER, 70' X 12' SR SERIES TRUCK SCALE			
				SCALE 1:45		SHEET 1 OF 3		MATERIAL	
				THIRD ANGLE PROJECTION <div></div>		PIY 182055		REV A	

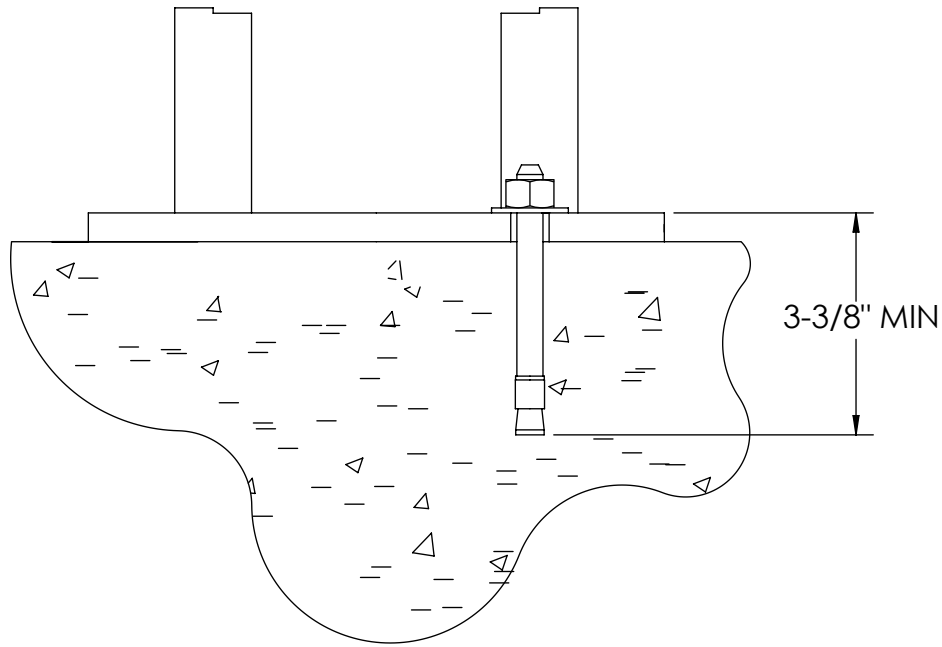
CONCRETE SCHEDULE			
			VOLUME (CUBIC YARDS)
APPROACHES			12.3
CLEANOUT			11.0
PIERS			16.7
TOTAL			40.0
MISC. STEEL			
PIT COPING	3 X 3 X 1/4	30 LN. FT	147 LBS

VOLUME SHOWN FOR STATED PIER DEPTH.
ADD ADDITIONAL CONCRETE FOR
DEEPER PIERS AS NEEDED.

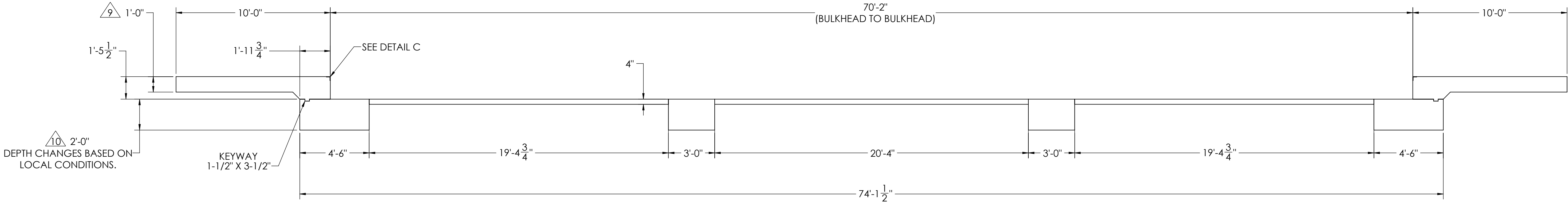
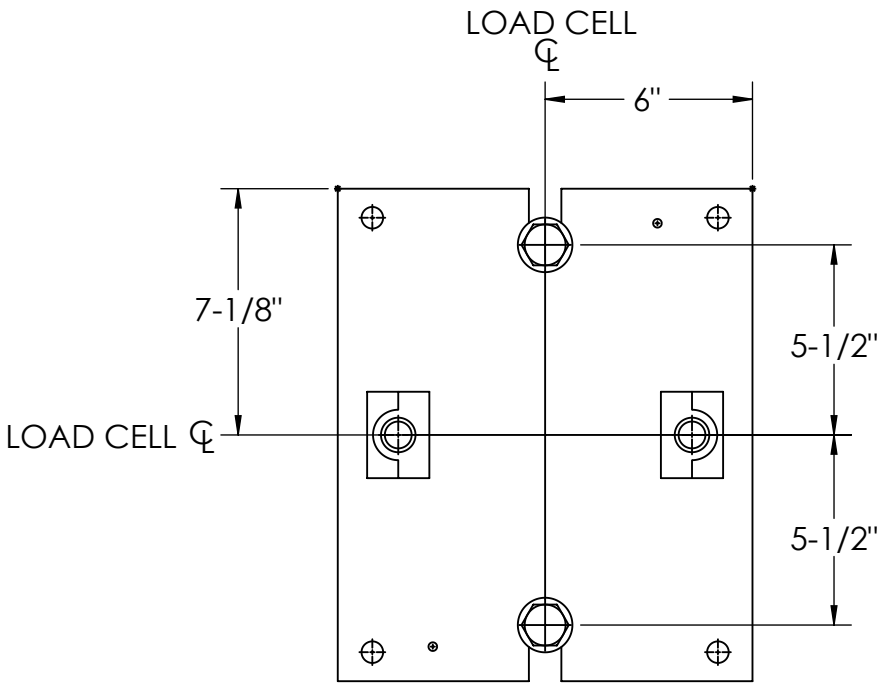
CONCRETE LAYOUT



DETAIL C

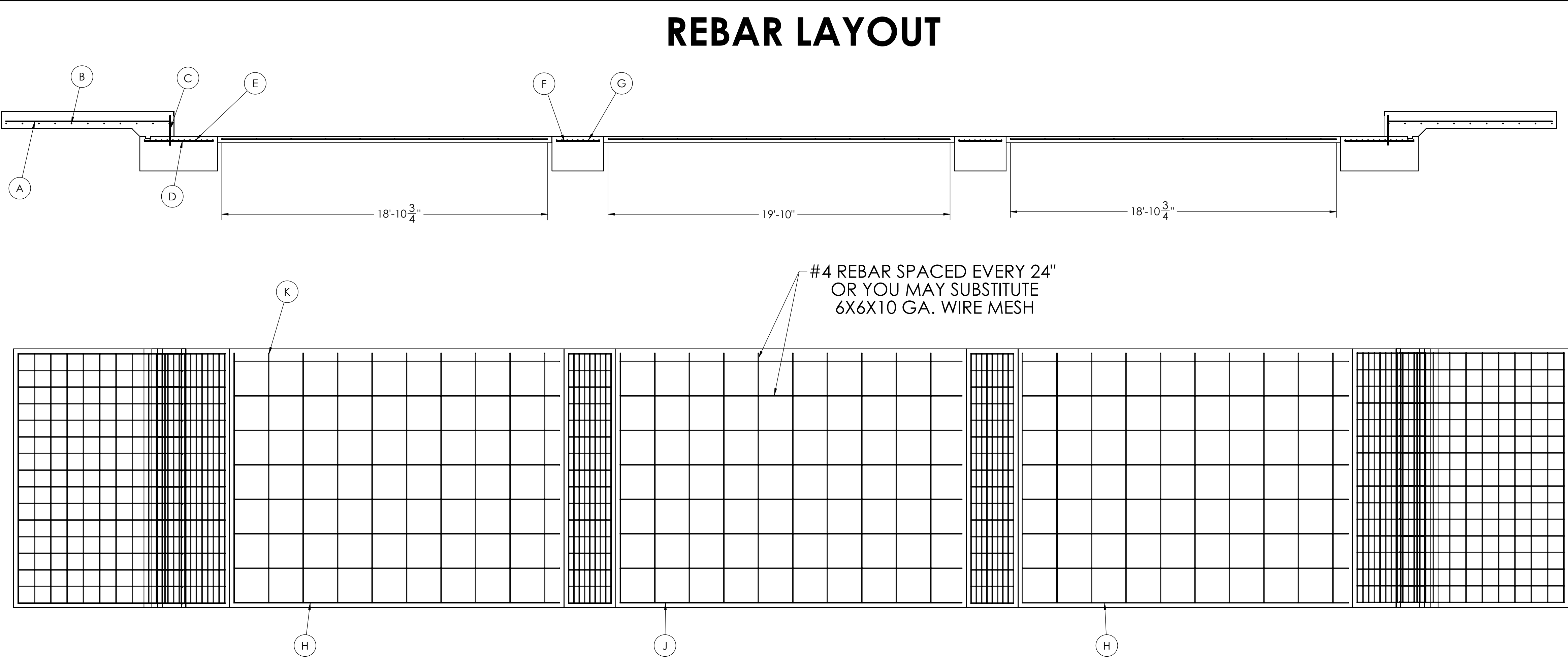


DETAIL D



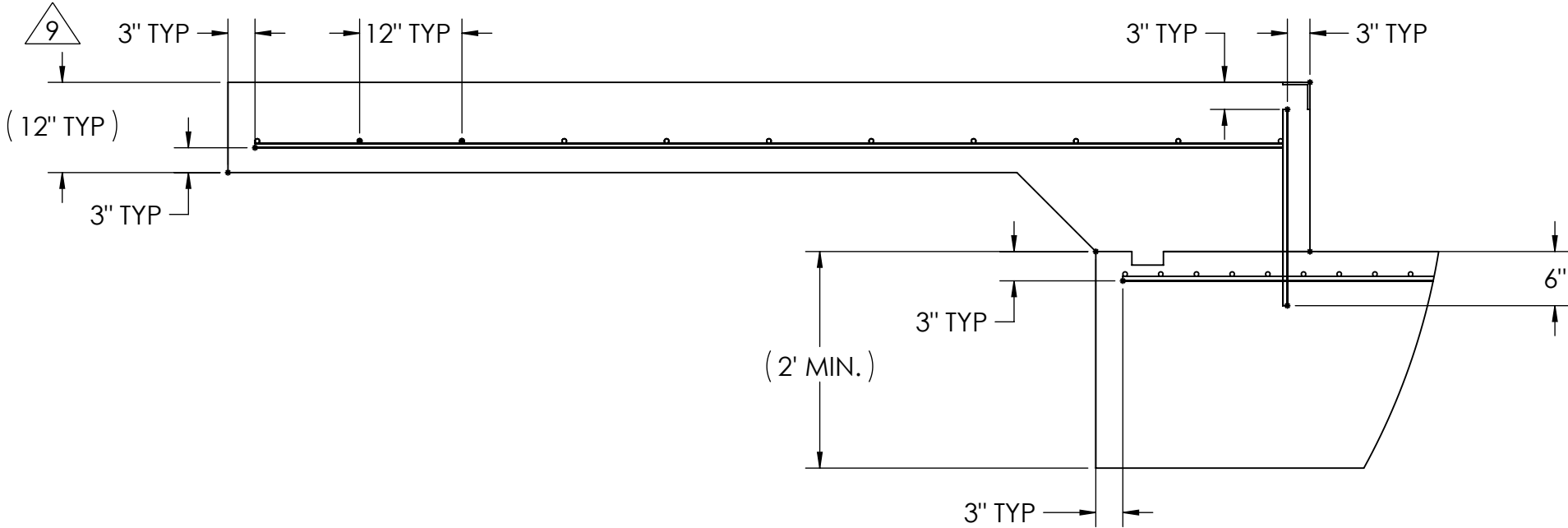
DESIGNED BY: J. JOHNSON S. JOHNSON 02/27/2017	DRAWN BY: J. JOHNSON S. JOHNSON 02/27/2017	PIER APPROVAL DATE: S. JOHNSON 03/30/2017	RICE LAKE WEIGHING SYSTEMS	
TREATMENT NONE	THIS DRAWING AND INFORMATION CONTAINED HEREIN IS AND REMAINS THE PROPERTY OF RICE LAKE WEIGHING SYSTEMS INC. - HEREINAFTER REFERRED TO AS RLWS. IT MAY BE USED ONLY FOR RLWS' PROPOSAL AND/OR ITS CUSTOMER'S ORDERS. IT SHALL NOT BE DISCLOSED OR COPIED WITHOUT RLWS' SPECIFIC WRITTEN CONSENT AND SHALL BE IMMEDIATELY RETURNED UPON REQUEST.	UNLESS OTHERWISE SPECIFIED UNITS TO BE INCHES ALL THREADS TO BE CLASS 2 ALL DIMENSIONS APPLICABLE AFTER TREATMENT	DESCRIPTION: FOUNDATION, CONCRETE PIER, 70' X 12' SR SERIES TRUCK SCALE	
NUMBER OF CRANES: MINIMUM CRANE CAPACITY: ESTIMATED WEIGHT (POUNDS)	DO NOT SCALE DRAWING SURFACE FINISH ✓	TOLERANCES DRAWING TOLERANCES UNLESS OTHERWISE SPECIFIED .XX: .XXX: ANGLE:	SCALE: 1:45 SHEET: 2 OF 3 MATERIAL: THIRD ANGLE PROJECTION P/N	REV: A
			182055	

MATERIAL REQUIRMENTS				
REBAR SCHEDULE				
BAL. NO.	QUANTITY	LENGTH (FT-IN.)	DESCRIPTION	WEIGHT
A	36	9' 6"	# 4 @ 12 O.C.	228
B	22	14' 6"	# 4 @ 12 O.C.	213
C	36	1' 8"	# 4 @ 12 O.C.	40
D	36	4' 0"	# 4 @ 12 O.C.	96
E	26	14' 6"	# 4 @ 4 O.C.	252
F	36	2' 6"	# 4 @ 12 O.C.	60
G	18	14' 6"	# 4 @ 4 O.C.	174
CLEANOUT SCHEDULE				
H	16	18' 10 3/4"	# 4 @ 24 O.C.	202
J	8	19' 10"	# 4 @ 24 O.C.	106
K	30	14' 6"	# 4 @ 24 O.C.	291
TOTAL WEIGHT OF REBAR (LBS.)				1663
TOTAL LENGTH OF REBAR (FT.)				2489
WIRE MESH	6 X 6-10 GA.		865 SQ FT	

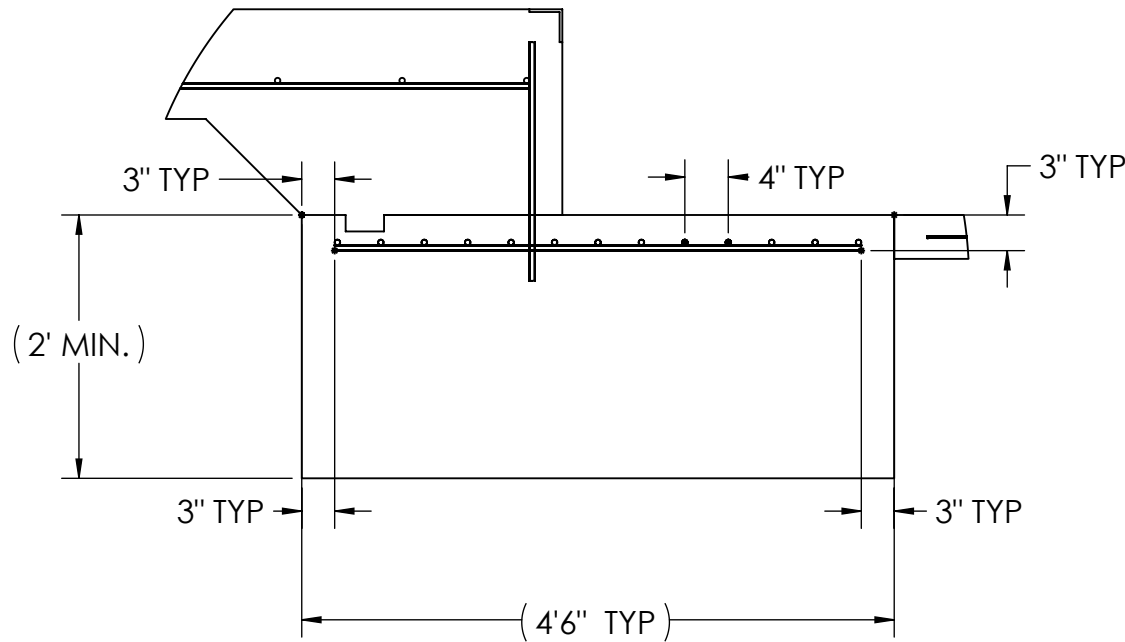


APPROACH STANDARD VIEWS

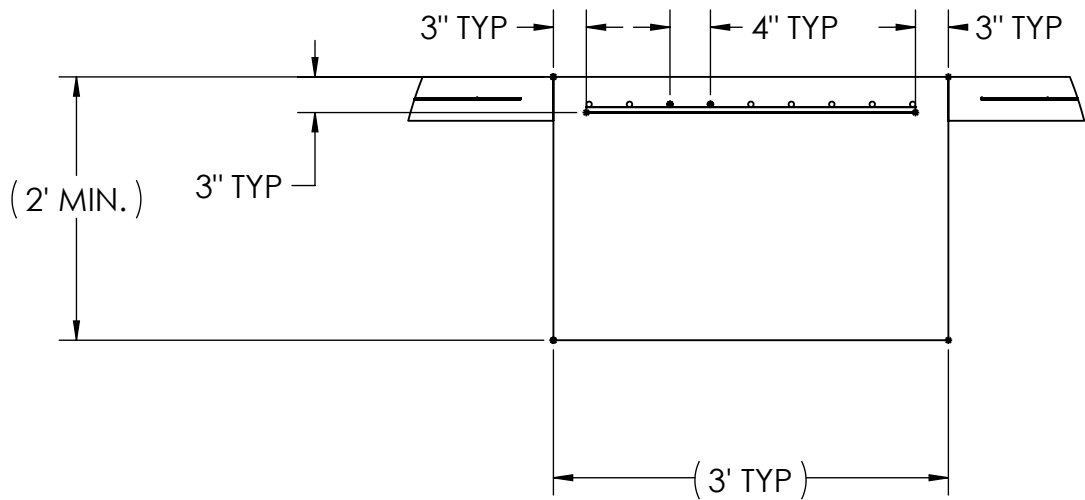
NOTES: 1) LEFT AND RIGHT APPROACHES ARE MIRROR IMAGES OF EACH OTHER AND CONTAIN AN IDENTICAL PART LIST



APPROACH PIER STANDARD VIEWS



PIER STANDARD VIEWS



DESIGNED BY: JGMS S. JOHNSON 02/27/2017		DRAWN BY: JGMS S. JOHNSON 02/27/2017		PIER APPROVAL DATE S. JOHNSON 03/30/2017		<div>THIS DRAWING AND INFORMATION CONTAINED HEREIN IS AND REMAINS THE PROPERTY OF RICE LAKE WEIGHING SYSTEMS INC. - HEREINAFTER REFERRED TO AS RLWS. IT MAY BE USED ONLY FOR RLWS' PROPOSAL AND/OR ITS CUSTOMER'S ORDERS. IT SHALL NOT BE DISCLOSED OR COPIED WITHOUT RLWS' SPECIFIC WRITTEN CONSENT AND SHALL BE IMMEDIATELY RETURNED UPON REQUEST.</div>	
TREATMENT NONE		UNLESS OTHERWISE SPECIFIED UNITS TO BE INCHES ALL THREADS TO BE CLASS 2 ALL DIMENSIONS APPLICABLE AFTER TREATMENT		DESCRIPTION FOUNDATION, CONCRETE PIER, 70' X 12' SR SERIES TRUCK SCALE		<div>DO NOT SCALE DRAWING SURFACE FINISH ✓</div>	
NUMBER OF CRANES: MINIMUM CRANE CAPACITY: ESTIMATED WEIGHT (POUNDS):		DRAWING TOLERANCES UNLESS OTHERWISE SPECIFIED .XX: ± .XXX: ± ANGLE: ±		SCALE 1:48		SHEET 3 OF 3	
THIRD ANGLE PROJECTION FPM		MATERIAL 182055		REV. A			