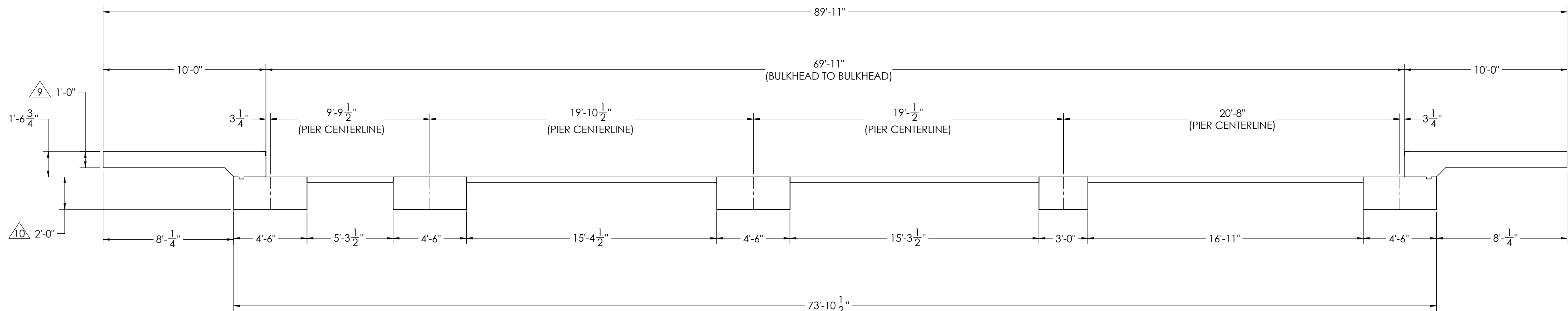
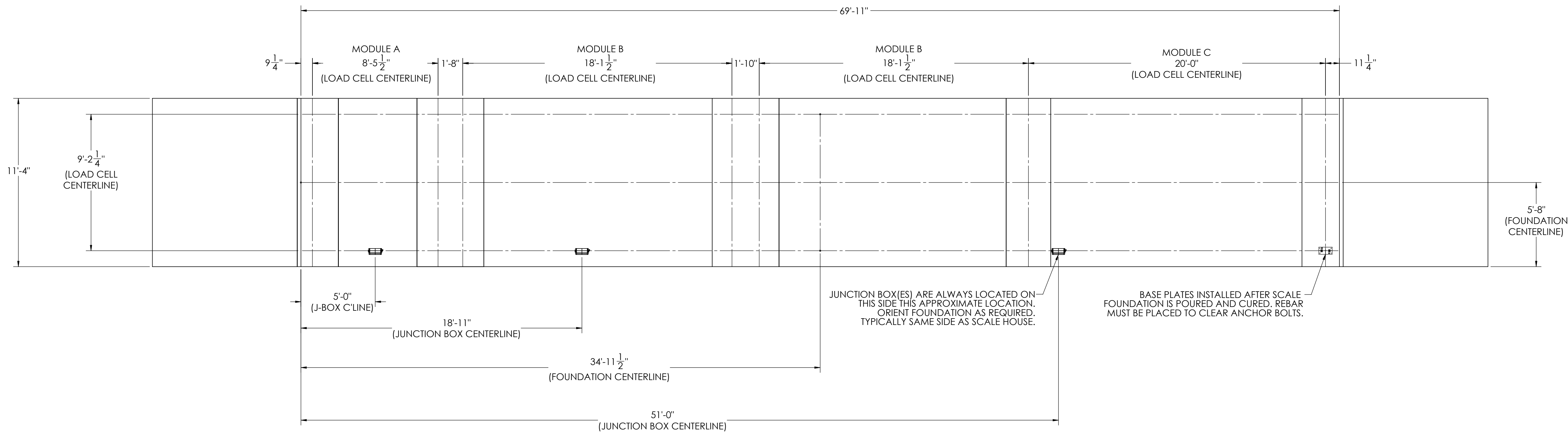


## DETAILS

REVISION				
REV.	ECO	DESCRIPTION	INIT	DATE
A		ENGINEERING RELEASE	SPJ	03/03/2017




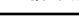


NOTES:

- 1) CONCRETE: F<sub>C</sub> = 3000 PSI @ 28 DAYS.
- 2) REINFORCING STEEL: DEFORMED BARS ASTM A615 GRADE 60.
- 3) STATE AND LOCAL AGENCIES MAY HAVE VARIOUS REQUIREMENTS FOR APPROACH RAMP LENGTH, PITCH, AND FOR CLEAN OUT HEIGHT. PLEASE CHECK WITH ALL AGENCIES PRIOR TO CONSTRUCTION.
- 4) MONOLITHIC POUR IS ALLOWED AT CONTRACTOR'S DISCRETION.
- 5) DEVELOP AND MAINTAIN SITE GRADES WHICH WILL RAPIDLY DRAIN SURFACE AND ROOF RUN-OFF AWAY FROM FOUNDATION.
- 6) FOOTINGS HAVE BEEN DESIGNED FOR A MINIMUM SOIL PRESSURE OF 2500 PSF. IT WILL BE THE RESPONSIBILITY OF OTHERS TO VERIFY THIS VALUE.
- 7) WHERE REINFORCING BARS ARE SHOWN CONTINUOUS, LAP SPLICE BARS 40 DIAMETERS
- 8) APPROACHES TO BE A COMMON PLANE WITHIN 1/4".

9. APPROACH THICKNESS MAY BE 10" MINIMUM WHERE ALLOWED BY STATE REGULATIONS.

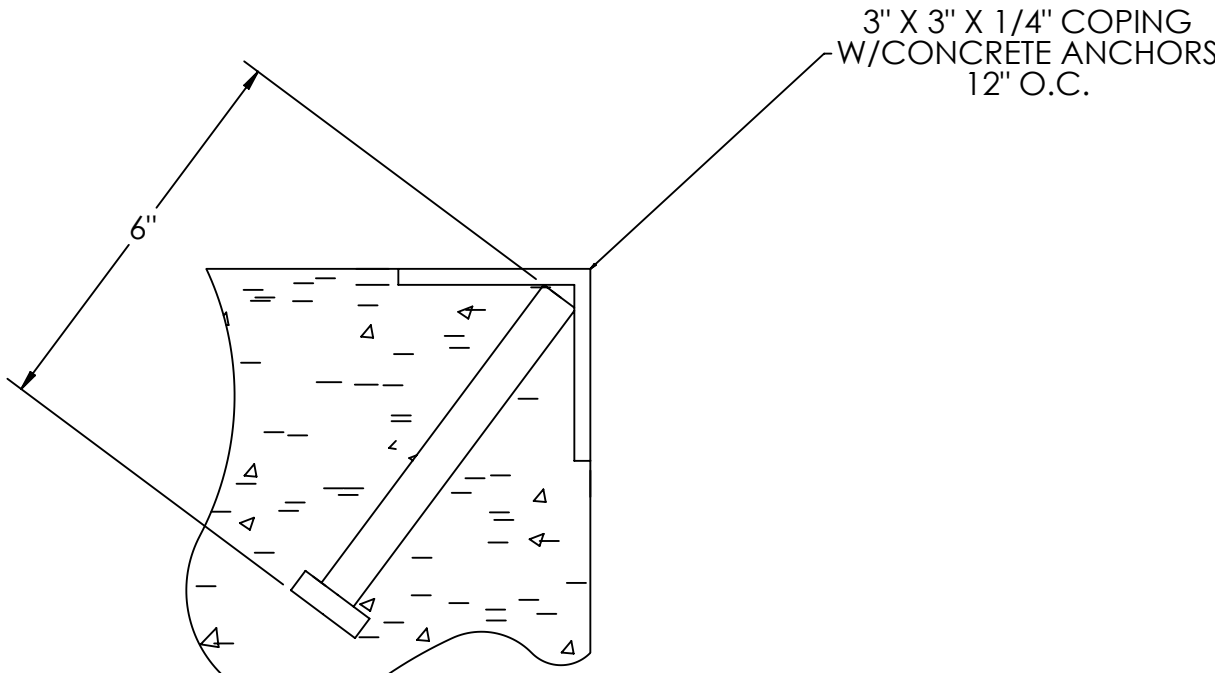
10. FOUNDATION MUST EXTEND A MINIMUM OF 12" BELOW THE FROST PENETRATION LINE

(ISSUE) RT DATE <b>S. JOHNSON</b> <b>03/03/2017</b>		DRAWN BY DATE <b>S. JOHNSON</b> <b>03/03/2017</b>		FIELD PROPOSAL DATE <b>S. JOHNSON</b> <b>03/28/2017</b>			
(TREATMENT) <b>NONE</b>		THIS DRAWING AND INFORMATION CONTAINED HEREIN IS AND REMAINS THE PROPERTY OF RICE LAKE WEIGHING SYSTEMS, INC. HEREINAFTER REFERRED TO AS "RICE LAKE". IT IS TO BE USED ONLY FOR "RUMPS" PROPOSAL AND/OR FOR ITS CUSTOMERS. IF IT IS TO BE USED FOR ANY OTHER PURPOSE, WITHOUT RUMPS SPECIFIC WRITTEN CONSENT AND SHALL BE IMMEDIATELY RETURNED UPON REQUEST.		UNLESS OTHERWISE SPECIFIED UNITS SHALL BE INCHES ALL THREADS TO BE CLASS 2 ALL DIMENSIONS APPLICABLE AFTER TREATMENT			
(NUMBER OF CRANES) 		(TOLERANCES) DO NOT SCALE DRAWING SURFACE FINISH .XX: ± .XXX: ± ✓ ANGLE: ±		(DESCRIPTION) <b>FOUNDATION, CONCRETE PIER 10/20/40 X 11          OTR MULTI-AXLE SERIES TRUCK SCALE</b>		(SCALE) 1:45	
(MINIMUM CRANE CAPACITY) 		(DRAWING TOLERANCES) UNLESS OTHERWISE SPECIFIED		(SHEET) 1 OF 3		(MATERIAL)	
(ESTIMATED WEIGHT POUNDS) ✓		(THIRD ANGLE PROJECTION) 		(PIES) <b>182118</b>		(REV) <b>A</b>	

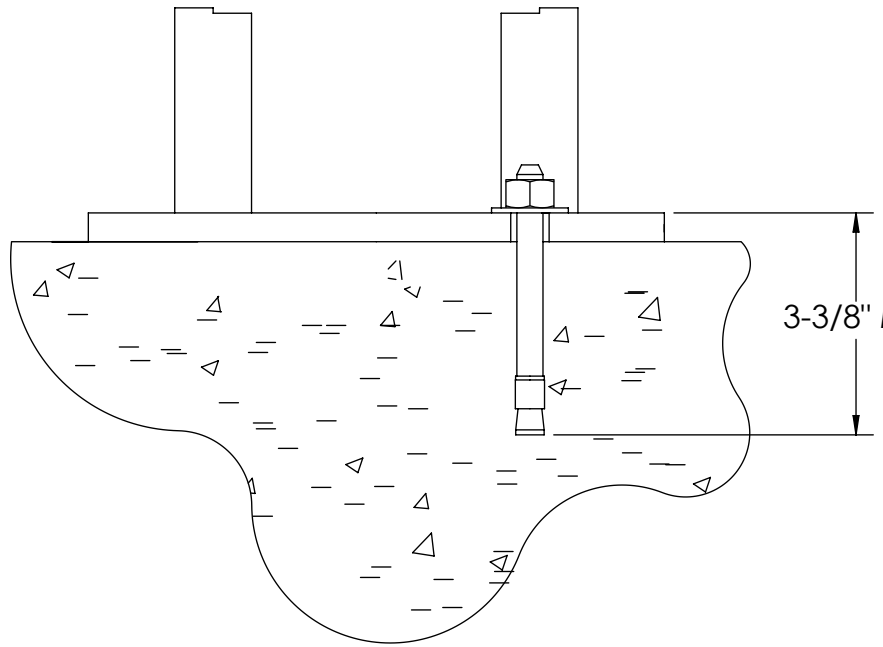
CONCRETE SCHEDULE			
		VOLUME (CUBIC YARDS)	
APPROACHES		9.5	
CLEANOUT		7.4	
PIERS		17.6	
TOTAL		34.5	
MISC. STEEL			
PIT COPING	3 X 3 X 1/4	23 LN. FT	113 LBS

VOLUME SHOWN FOR STATED PIER DEPTH.  
ADD ADDITIONAL CONCRETE FOR  
DEEPER PIERS AS NEEDED.

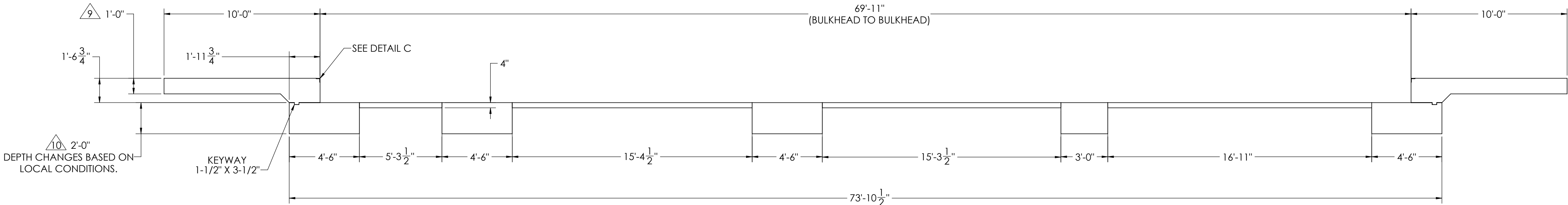
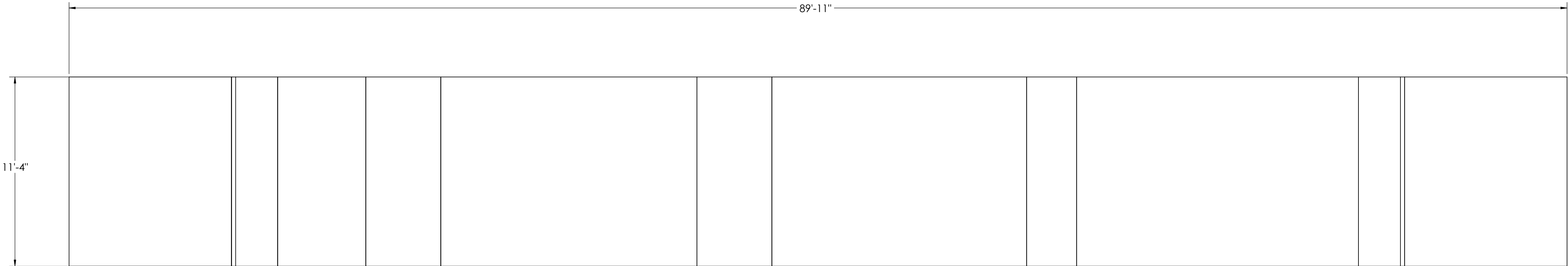
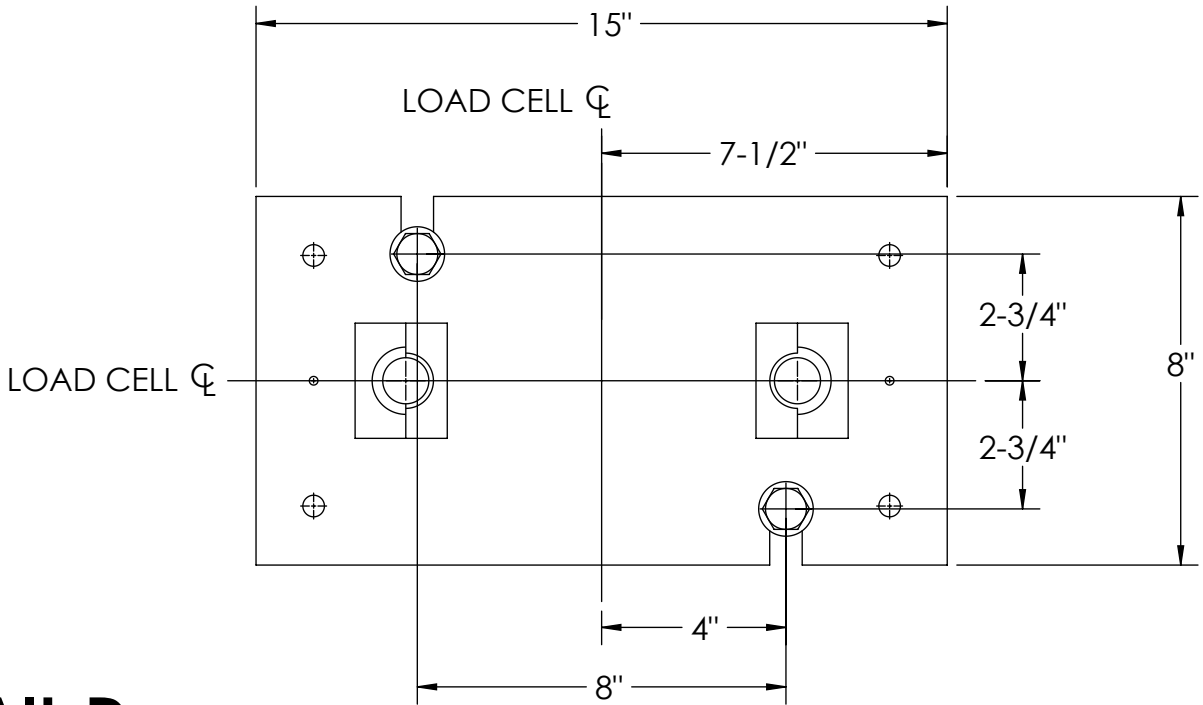
## CONCRETE LAYOUT



DETAIL C

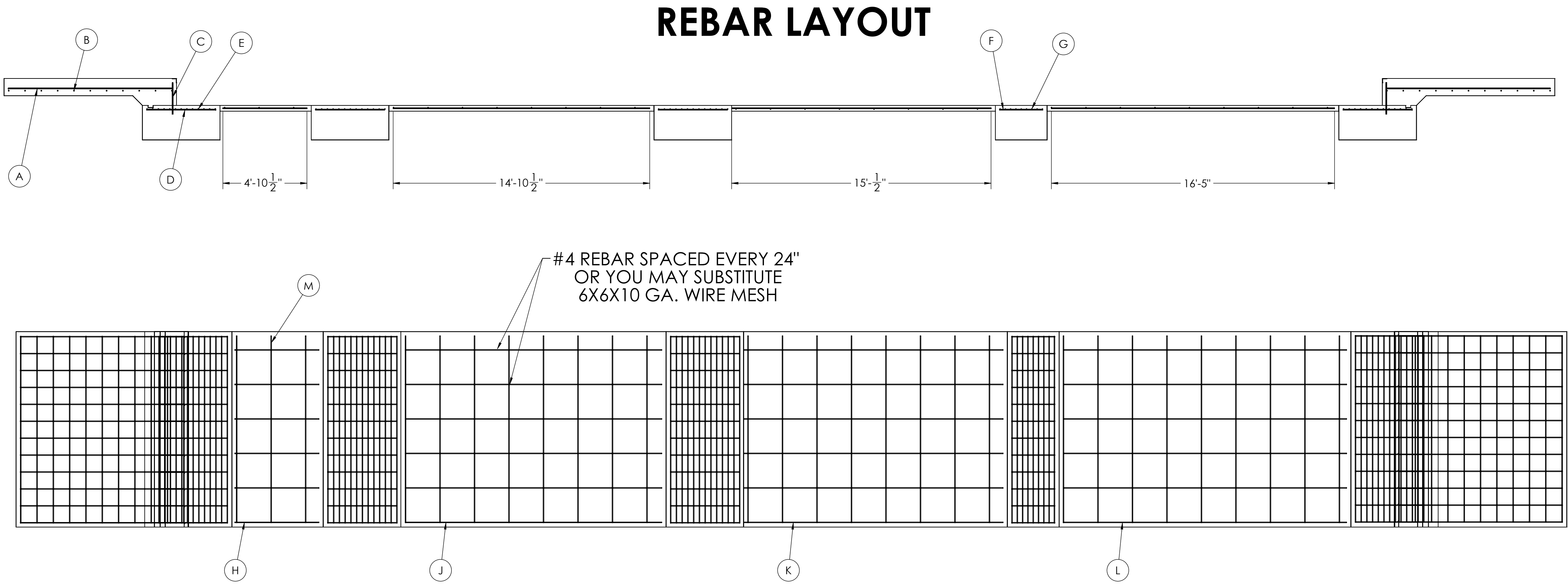


DETAIL D



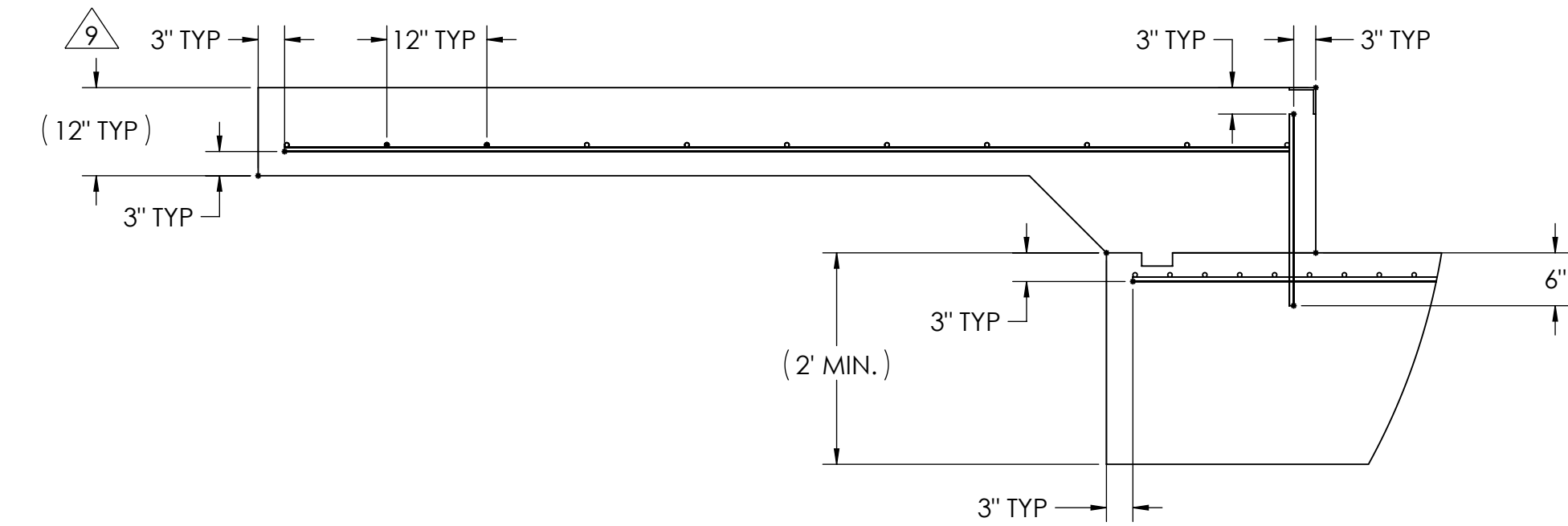
DESIGNED BY: JGMS S. JOHNSON 03/03/2017	DRAWN BY: JGMS S. JOHNSON 03/03/2017	PIER APPROVAL DATE S. JOHNSON 03/28/2017	<b>RICE LAKE</b> WEIGHING SYSTEMS	
TREATMENT  NONE	THIS DRAWING AND INFORMATION CONTAINED HEREIN IS AND REMAINS THE PROPERTY OF RICE LAKE WEIGHING SYSTEMS INC. - HEREINAFTER REFERRED TO AS RLWS. IT MAY BE USED ONLY FOR RLWS' PROPOSAL AND/OR ITS CUSTOMER'S ORDERS. IT SHALL NOT BE DISCLOSED OR COPIED WITHOUT RLWS' SPECIFIC WRITTEN CONSENT AND SHALL BE IMMEDIATELY RETURNED UPON REQUEST.		UNLESS OTHERWISE SPECIFIED UNITS TO BE INCHES ALL THREADS TO BE CLASS 2 ALL DIMENSIONS APPLICABLE AFTER TREATMENT	
NUMBER OF CRANES:  MINIMUM CRANE CAPACITY:  ESTIMATED WEIGHT (POUNDS)	TOLERANCES DRAWINGS TOLERANCES UNLESS OTHERWISE SPECIFIED DO NOT SCALE SURFACE FINISH XXX: XXX: ANGLE: ✓		DESCRIPTION FOUNDATION, CONCRETE PIER 10/20/40 X 11 OTR MULTI-AXLE SERIES TRUCK SCALE SCALE: 1:45 SHEET: 2 OF 3 MATERIAL THIRD ANGLE PROJECTION 182118 REV: A	

MATERIAL REQUIRMENTS				
REBAR SCHEDULE				
BAL. NO.	QUANTITY	LENGTH (FT-IN.)	DESCRIPTION	WEIGHT
A	24	9' 6"	# 4 @ 12 O.C.	152
B	22	10' 10"	# 4 @ 12 O.C.	159
C	24	1' 9 3/4"	# 4 @ 12 O.C.	29
D	48	4' 0"	# 4 @ 12 O.C.	128
E	52	10' 10"	# 4 @ 4 O.C.	376
F	12	2' 6"	# 4 @ 12 O.C.	20
G	9	10' 10"	# 4 @ 4 O.C.	65
CLEANOUT SCHEDULE				
H	6	4' 10 1/2"	# 4 @ 24 O.C.	20
J	6	14' 10 1/2"	# 4 @ 24 O.C.	60
K	6	15' 0 1/2"	# 4 @ 24 O.C.	60
L	6	16' 5"	# 4 @ 24 O.C.	66
M	28	10' 10"	# 4 @ 24 O.C.	203
TOTAL WEIGHT OF REBAR (LBS.)				1338
TOTAL LENGTH OF REBAR (FT.)				2003
WIRE MESH				581 SQ.FT



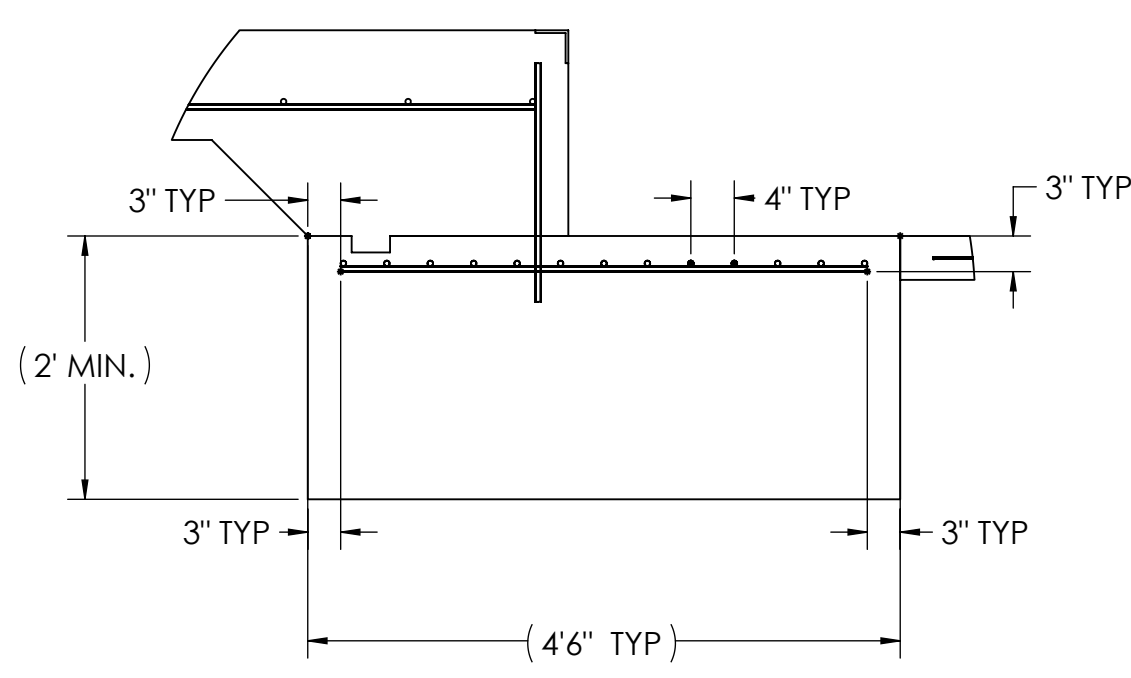
APPROACH STANDARD VIEWS

**NOTES:** 1) LEFT AND RIGHT APPROACHES ARE MIRROR IMAGES OF EACH OTHER AND CONTAIN AN IDENTICAL PART LIST

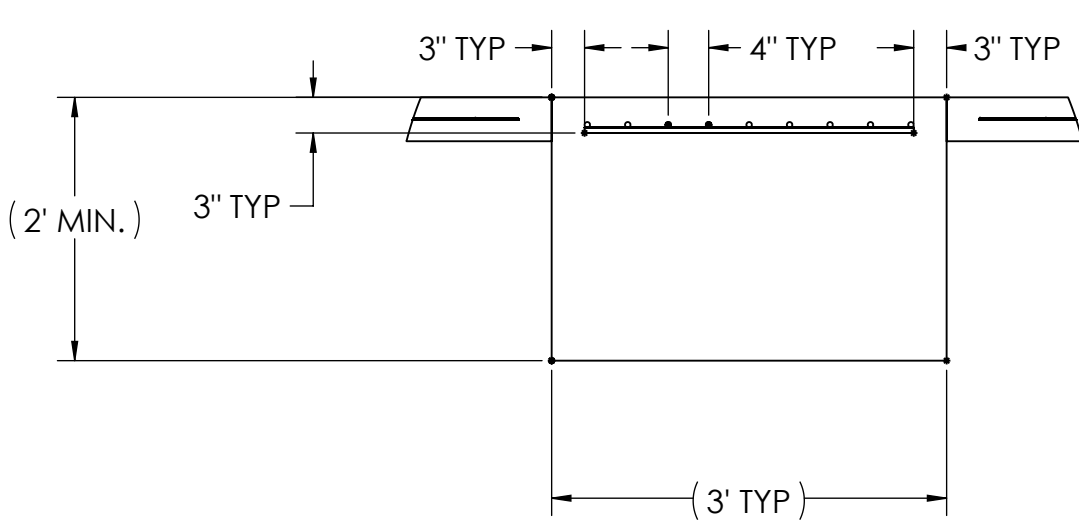


APPROACH/MULTI-AXLE PIER STANDARD VIEWS

**NOTES:** 1) MULTI-AXLE PIER WILL NOT HAVE KEYWAY IN IT



PIER STANDARD VIEWS



DESIGNED BY: J.OHNSON S.JOHNSON 03/03/2017	DRAWN BY: J.OHNSON S.JOHNSON 03/03/2017	PIER APPROVAL: J.OHNSON S.JOHNSON 03/28/2017	<b>RICE LAKE</b> WEIGHING SYSTEMS	
TREATMENT  NONE	THIS DRAWING AND INFORMATION CONTAINED HEREIN IS AND REMAINS THE PROPERTY OF RICE LAKE WEIGHING SYSTEMS INC. - HEREINAFTER REFERRED TO AS RLWS. IT MAY BE USED ONLY FOR RLWS' PROPOSAL AND/OR ITS CUSTOMER'S ORDERS. IT SHALL NOT BE DISCLOSED OR COPIED WITHOUT RLWS' SPECIFIC WRITTEN CONSENT AND SHALL BE IMMEDIATELY RETURNED UPON REQUEST.		UNLESS OTHERWISE SPECIFIED UNITS TO BE INCHES ALL THREADS TO BE CLASS 2 ALL DIMENSIONS APPLICABLE AFTER TREATMENT	
NUMBER OF CRANES: MINIMUM CRANE CAPACITY: ESTIMATED WEIGHT (POUNDS)	DO NOT SCALE DRAWING SURFACE FINISH ✓	TOLERANCES DRAWING TOLERANCES UNLESS OTHERWISE SPECIFIED .XX: ± .XXX: ± ANGLE: ±	SCALE 1:48	SHEET 3 OF 3
DESCRIPTION FOUNDATION, CONCRETE PIER 10/20/40 X 11 OTR MULTI-AXLE SERIES TRUCK SCALE			THIRD ANGLE PROJECTION Y/N	REV. A
			182118	