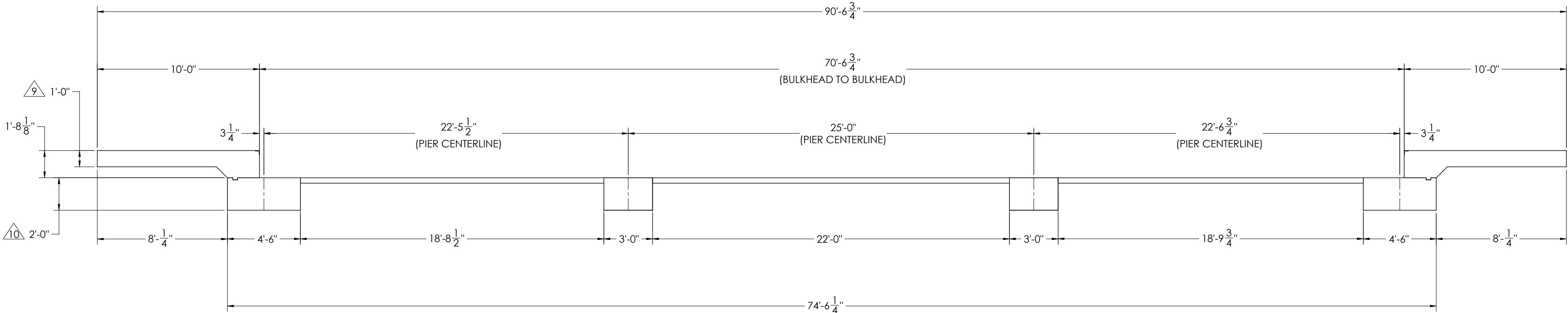
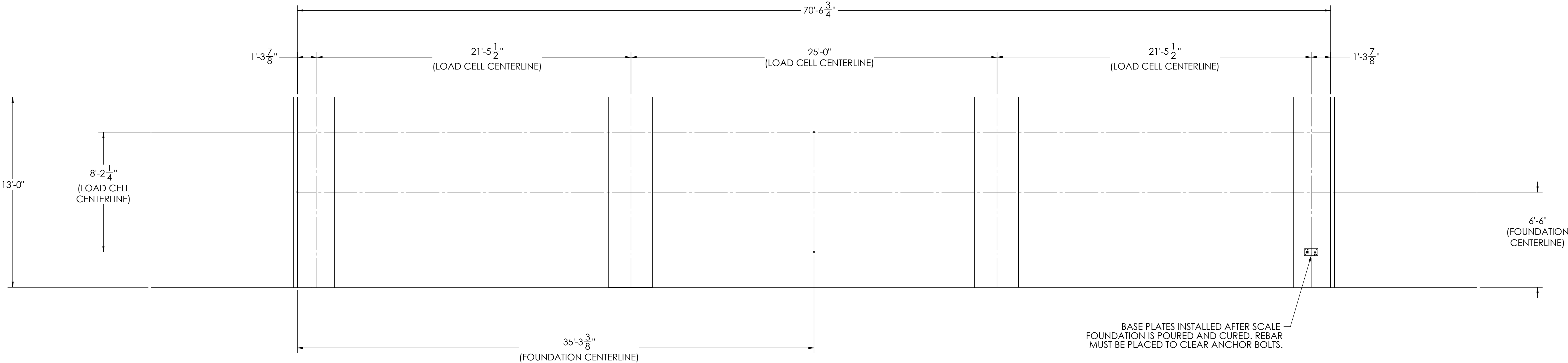






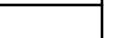
DETAILS

REVISION				
REV.	ECO	DESCRIPTION	INIT	DATE
A		ENGINEERING RELEASE	SPJ	03/03/2017



NOTES:

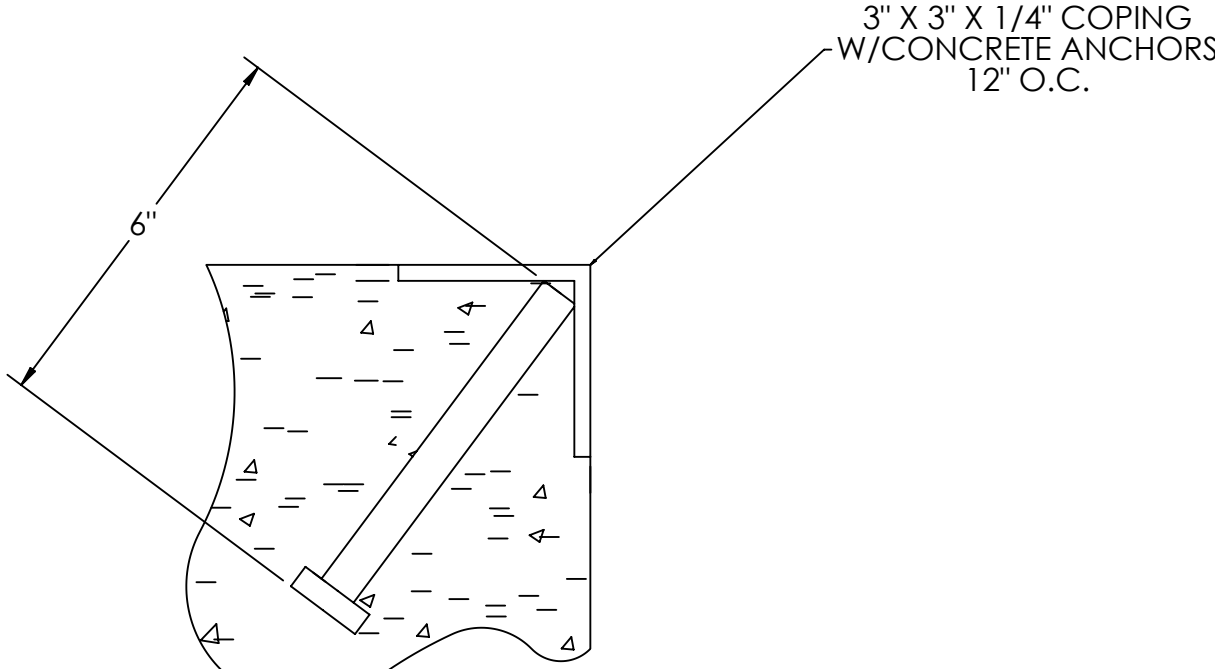
- 1) CONCRETE: F_C = 3000 PSI @ 28 DAYS.
- 2) REINFORCING STEEL: DEFORMED BARS ASTM A615 GRADE 60.
- 3) STATE AND LOCAL AGENCIES MAY HAVE VARIOUS REQUIREMENTS FOR APPROACH RAMP LENGTH, PITCH, AND FOR CLEAN OUT HEIGHT. PLEASE CHECK WITH ALL AGENCIES PRIOR TO CONSTRUCTION.
- 4) MONOLITHIC POUR IS ALLOWED AT CONTRACTOR'S DISCRETION.
- 5) DEVELOP AND MAINTAIN SITE GRADES WHICH WILL RAPIDLY DRAIN SURFACE AND ROOF RUN-OFF AWAY FROM FOUNDATION.
- 6) FOOTINGS HAVE BEEN DESIGNED FOR A MINIMUM SOIL PRESSURE OF 2500 PSF. IT WILL BE THE RESPONSIBILITY OF OTHERS TO VERIFY THIS VALUE.
- 7) WHERE REINFORCING BARS ARE SHOWN CONTINUOUS, LAP SPlice BARS 40 DIAMETERS
- 8) APPROACHES TO BE A COMMON PLANE WITHIN 1/4".

(ISSUE) RT DATE S. JOHNSON 03/03/2017		DRAWN BY DATE S. JOHNSON 03/03/2017		REVISION DATE S. JOHNSON 03/03/2017			
(TREATMENT) NONE		THIS DRAWING AND INFORMATION CONTAINED HEREIN IS THE SOLE PROPERTY OF RICE LAKE WEIGHING SYSTEMS INC. HEREINAFTER REFERRED TO AS RLWS. IT MAY BE USED ONLY FOR THE ORIGINAL AND ITS CUSTOMER'S ORDER. IT SHALL NOT BE DISCLOSED OR COPIED WITHOUT RLWS SPECIFIC WRITTEN CONSENT AND SHALL BE IMMEDIATELY RETURNED UPON REQUEST.		UNLESS OTHERWISE SPECIFIED UNITS TO BE INCHES ALL TOLERANCES TO BE CLASS 2 ALL DIMENSIONS APPLICABLE AFTER TREATMENT			
(NUMBER OF CRANES) 		TOLERANCES DO NOT SCALE DRAWING SURFACE FINISH ✓ ANGLE: ±		DRAWING TOLERANCES UNLESS OTHERWISE SPECIFIED .XX: ± .XXX: ±		FOUNDATION, CONCRETE PIER 70" X 10" ATV SERIES TRUCK SCALE	
(MINIMUM CRANE CAPACITY) 		SCALE 1:45		SHEET 1 OF 3		MATERIAL	
(ESTIMATED WEIGHT (POUNDS)) ✓		THIRD ANGLE PROJECTION 		PLYN 182151		REV A	

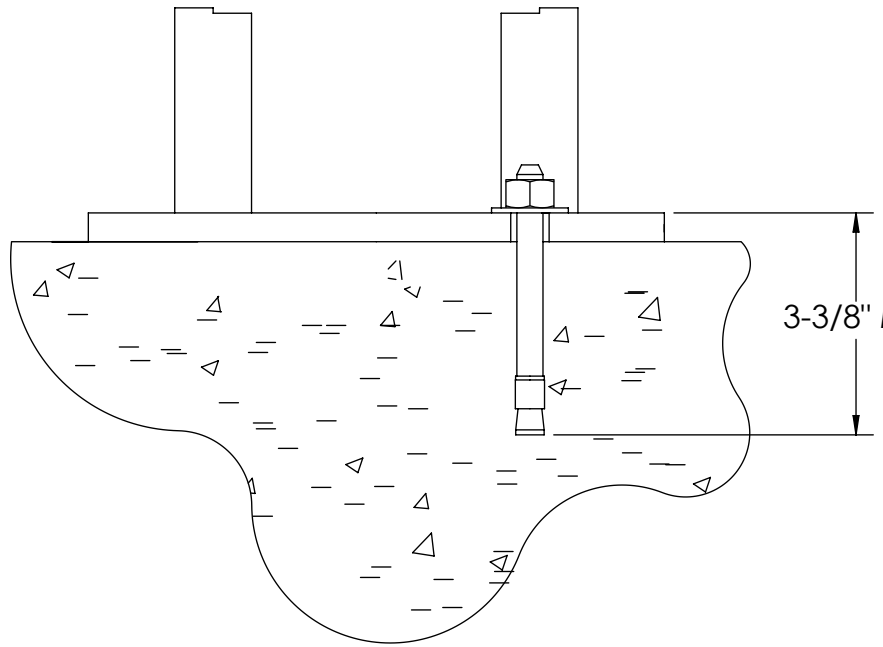
CONCRETE SCHEDULE			
		VOLUME (CUBIC YARDS)	
APPROACHES		11.2	
CLEANOUT		9.6	
PIERS		14.4	
TOTAL		35.2	
MISC. STEEL			
PIT COPING	3 X 3 X 1/4	26 LN. FT	127 LBS

VOLUME SHOWN FOR STATED PIER DEPTH.
ADD ADDITIONAL CONCRETE FOR
DEEPER PIERS AS NEEDED.

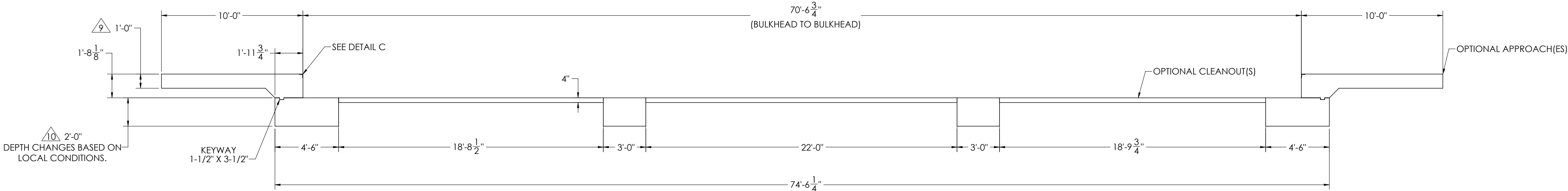
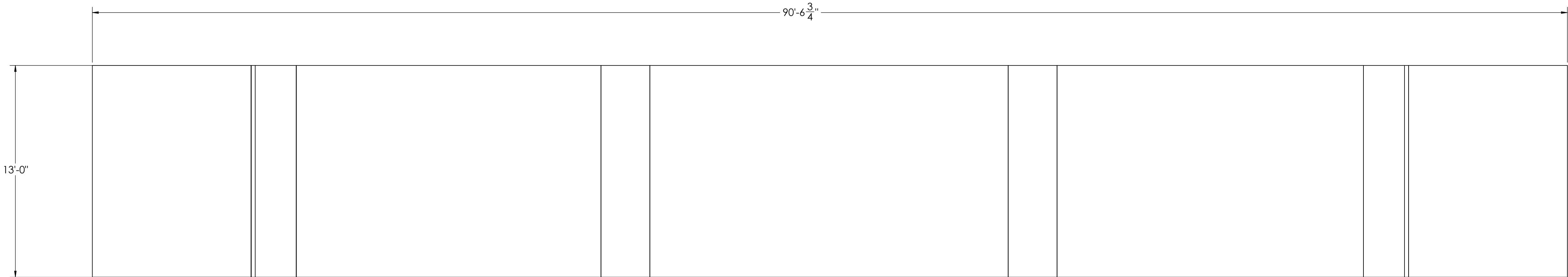
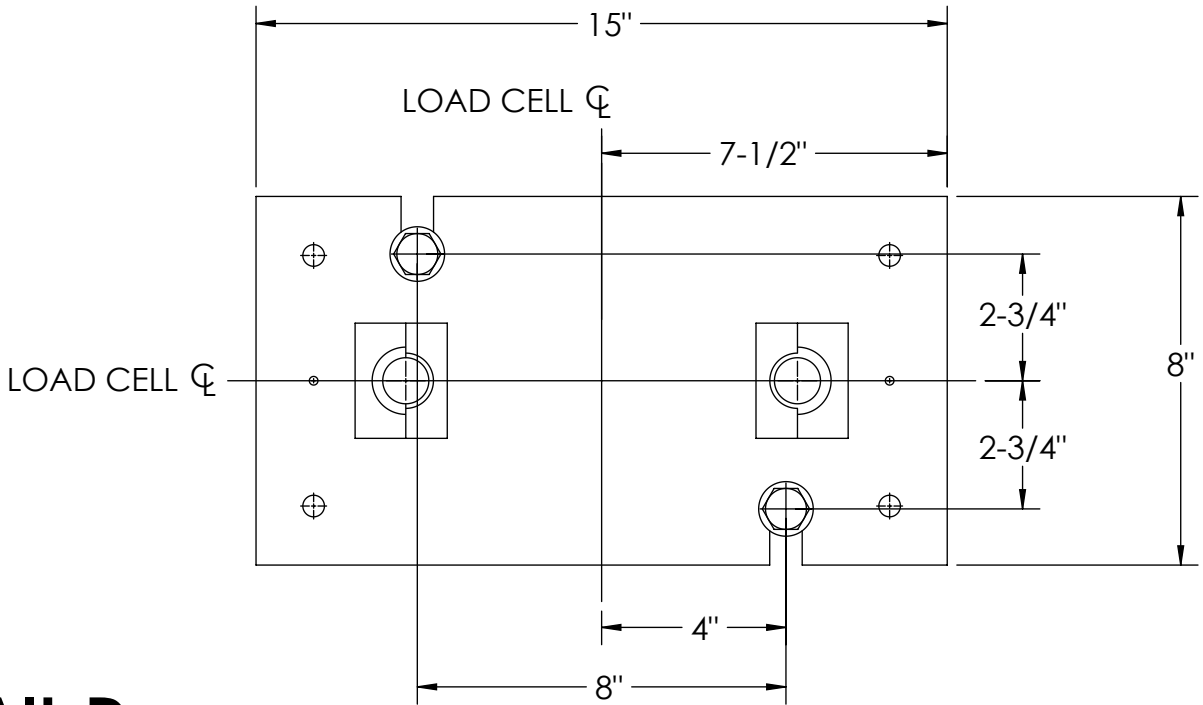
CONCRETE LAYOUT



DETAIL C

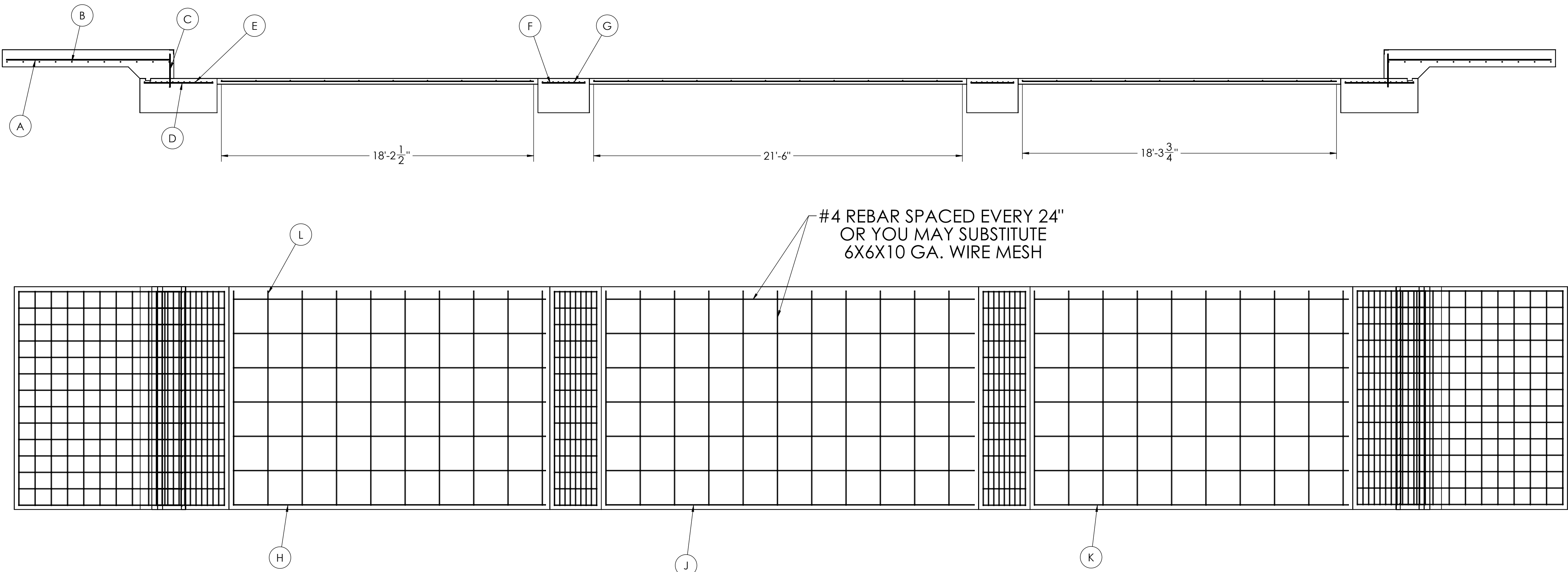


DETAIL D



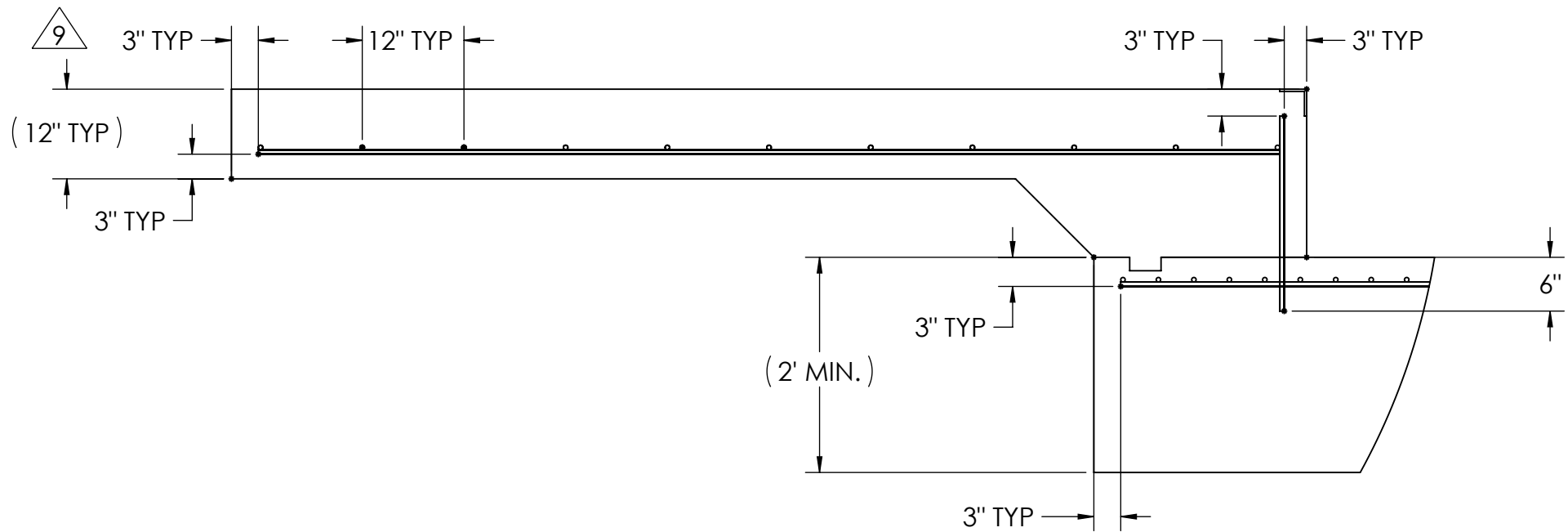
DESIGNED BY / DATE S. JOHNSON 03/03/2017	DRAWN BY / DATE S. JOHNSON 03/03/2017	PIER APPROVAL / DATE S. JOHNSON 03/30/2017	RICE LAKE WEIGHING SYSTEMS	
TREATMENT NONE	THIS DRAWING AND INFORMATION CONTAINED HEREIN IS AND REMAINS THE PROPERTY OF RICE LAKE WEIGHING SYSTEMS INC. - HEREINAFTER REFERRED TO AS RLWS. IT MAY BE USED ONLY FOR RLWS' PROPOSAL AND/OR ITS CUSTOMER'S ORDERS. IT SHALL NOT BE DISCLOSED OR COPIED WITHOUT RLWS' SPECIFIC WRITTEN CONSENT AND SHALL BE IMMEDIATELY RETURNED UPON REQUEST.	UNLESS OTHERWISE SPECIFIED UNITS TO BE INCHES ALL THREADS TO BE CLASS 2 ALL DIMENSIONS APPLICABLE AFTER TREATMENT	DESCRIPTION FOUNDATION, CONCRETE PIER 70' X 10' ATV SERIES TRUCK SCALE	
NUMBER OF CRANES: MINIMUM CRANE CAPACITY: ESTIMATED WEIGHT (POUNDS)	DO NOT SCALE DRAWING SURFACE FINISH TOLERANCES UNLESS OTHERWISE SPECIFIED .XX: .XXX: ANGLE:	SCALE 1:45	SHEET 2 OF 3	MATERIAL 182151
THIRD ANGLE PROJECTION			REV A	

MATERIAL REQUIREMENTS					
REBAR SCHEDULE					
BAL. NO.	QUANTITY	LENGTH (FT-IN.)	DESCRIPTION	WEIGHT	
A	28	9' 6"	# 4 @ 12 O.C.	178	
B	22	12' 6"	# 4 @ 12 O.C.	184	
C	28	1' 11"	# 4 @ 12 O.C.	36	
D	28	4' 0"	# 4 @ 12 O.C.	75	
E	26	12' 6"	# 4 @ 4 O.C.	217	
F	28	2' 6"	# 4 @ 12 O.C.	47	
G	18	12' 6"	# 4 @ 4 O.C.	150	
CLEANOUT SCHEDULE					
H	7	18' 2 1/2"	# 4 @ 24 O.C.	85	
J	7	21' 6"	# 4 @ 24 O.C.	101	
K	7	18' 3 3/4"	# 4 @ 24 O.C.	86	
L	31	12' 6"	# 4 @ 24 O.C.	259	
TOTAL WEIGHT OF REBAR (LBS.)				1416	
TOTAL LENGTH OF REBAR (FT.)				2120	
WIRE MESH		6 X 6-10 GA.		755	SQ FT

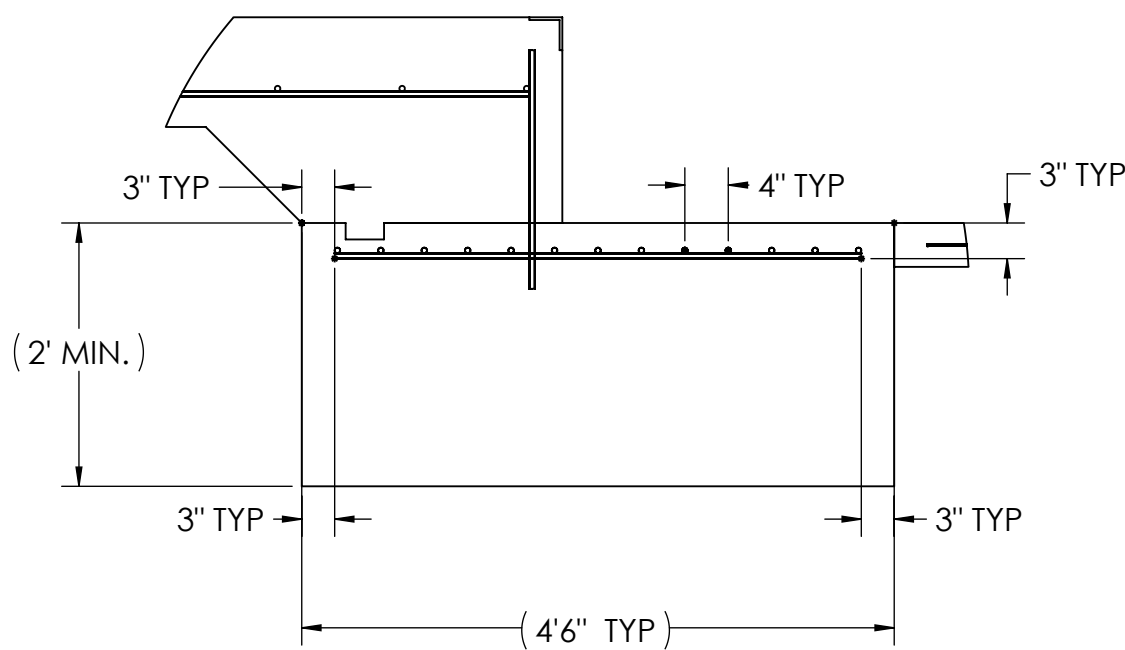


APPROACH STANDARD VIEWS

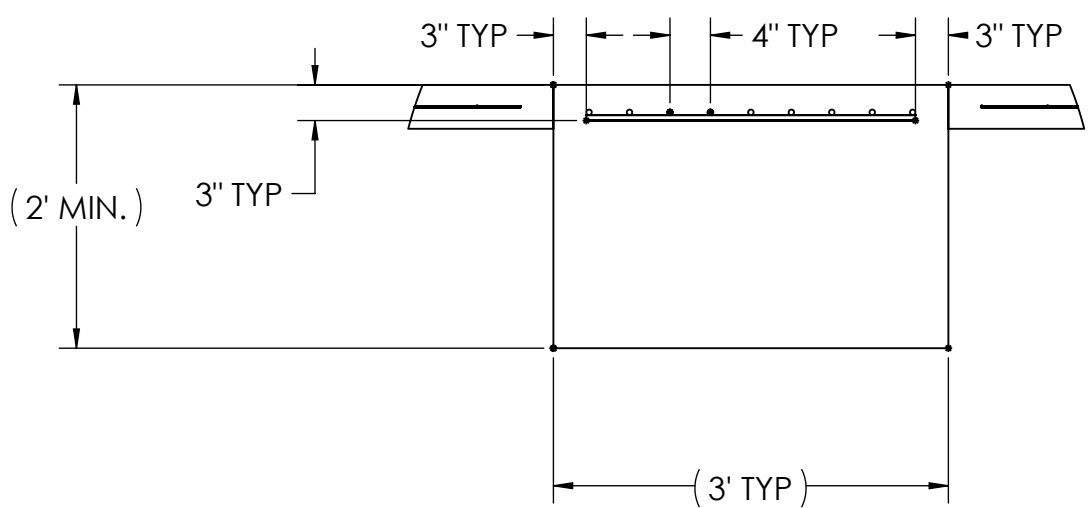
NOTES: 1) LEFT AND RIGHT APPROACHES ARE MIRROR IMAGES OF EACH OTHER AND CONTAIN AN IDENTICAL PART LIST





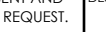


APPROACH PIER STANDARD VIEWS



PIER STANDARD VIEWS



DESIGNED BY DATE S. JOHNSON 03/03/2017		DRAWN BY DATE S. JOHNSON 03/03/2017		FIELD OFFICIAL DATE S. JOHNSON 03/03/2017			
TREATMENT NONE		THIS DRAWING AND INFORMATION CONTAINED HEREIN IS AND REMAINS THE PROPERTY OF RICE LAKE WEIGHING SYSTEMS INC. HEREINAFTER REFERRED TO AS RLS. IT MAY BE USED FOR THE RLS' PROPOSAL AND/OR ITS CUSTOMER'S PURPOSES. IT SHALL NOT BE REPRODUCED OR COPIED WITHOUT RLS'S SPECIFIC WRITTEN CONSENT AND SHALL BE IMMEDIATELY RETURNED UPON REQUEST.		UNLESS OTHERWISE SPECIFIED UNITS TO BE IN INCHES ALL THREADS TO BE CLASS 2 ALL DIMENSIONS APPLICABLE AFTER TREATMENT			
NUMBER OF CRANES 1				FOUNDATION, CONCRETE PIER 70' x 10' ATV SERIES TRUCK SCALE			
MINIMUM CRANE CAPACITY 100,000				SCALE 1:48		SHEET 3 OF 3	
ESTIMATED WEIGHT (POUNDS) 182151				BIRD ANGLE PROJECTION 		REV A	