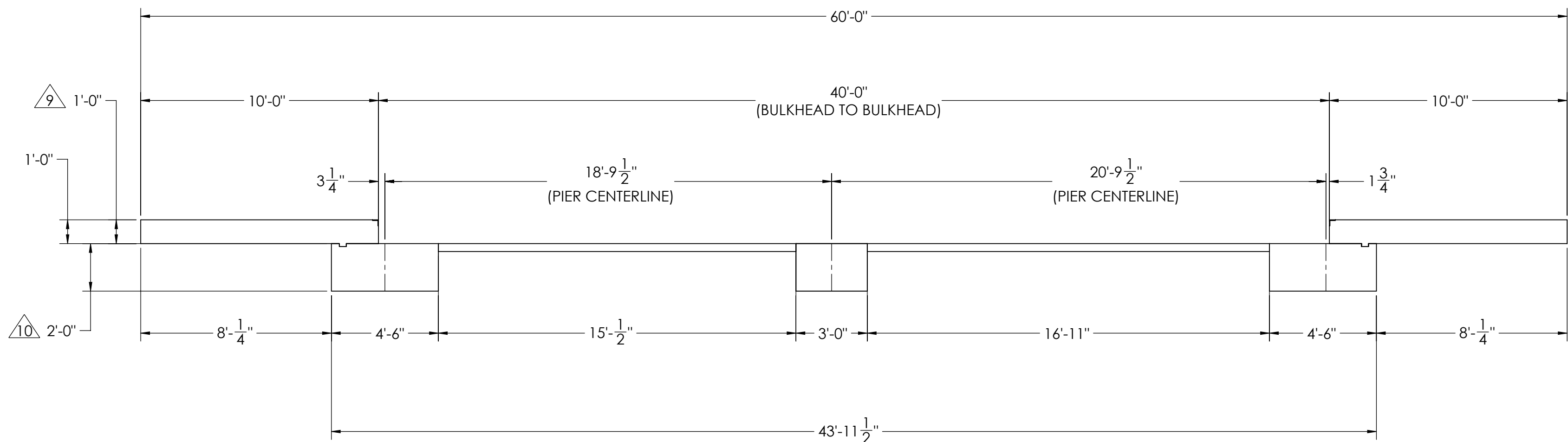
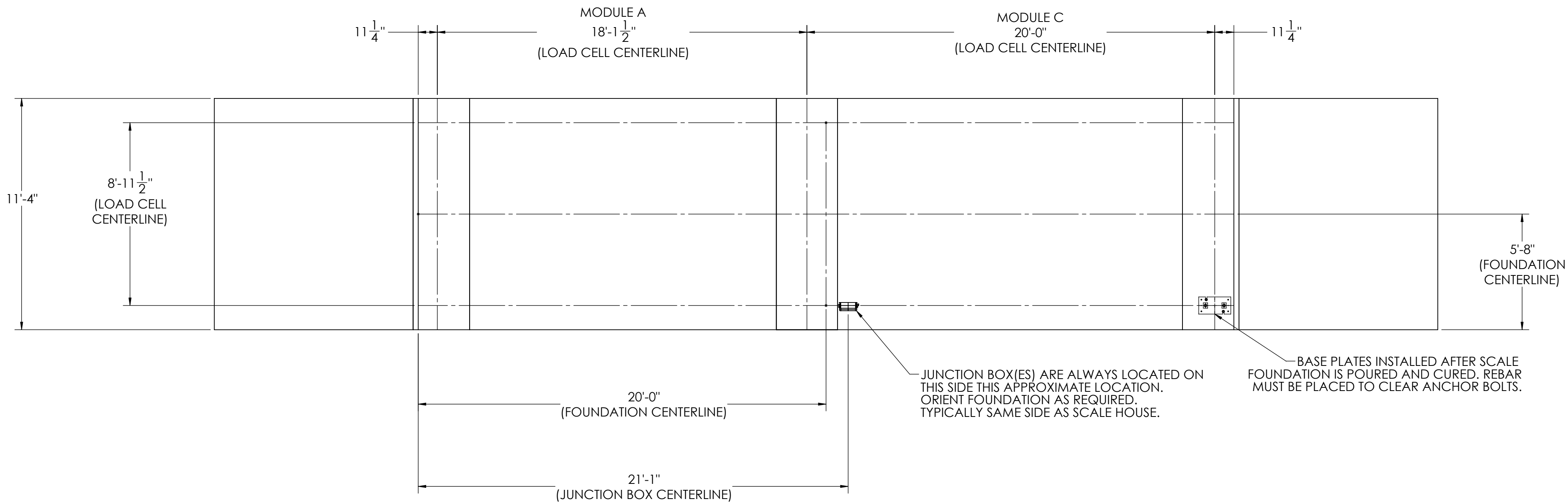


DETAILS

REVISION				
REV.	ECO	DESCRIPTION	INIT	DATE
A		ENGINEERING RELEASE	SPJ	04/04/2017



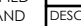


NOTES:

- 1) CONCRETE: f'c = 3000 PSI @ 28 DAYS.
- 2) REINFORCING STEEL: DEFORMED BARS ASTM A615 GRADE 60.
- 3) STATE AND LOCAL AGENCIES MAY HAVE VARIOUS REQUIREMENTS FOR APPROACH RAMP LENGTH, PITCH, AND FOR CLEAN OUT HEIGHT. PLEASE CHECK WITH ALL AGENCIES PRIOR TO CONSTRUCTION.
- 4) MONOLITHIC POUR IS ALLOWED AT CONTRACTOR'S DISCRETION.
- 5) DEVELOP AND MAINTAIN SITE GRADES WHICH WILL RAPIDLY DRAIN SURFACE AND ROOF RUN-OFF AWAY FROM FOUNDATION.
- 6) FOOTINGS HAVE BEEN DESIGNED FOR A MINIMUM SOIL PRESSURE OF 2500 PSF. IT WILL BE THE RESPONSIBILITY OF OTHERS TO VERIFY THIS VALUE.
- 7) WHERE REINFORCING BARS ARE SHOWN CONTINUOUS, LAP SPlice BARS 40 DIAMETERS.
- 8) APPROACHES TO BE A COMMON PLANE WITHIN 1/4".

⑨ APPROACH THICKNESS MAY BE 10" MINIMUM WHERE ALLOWED BY STATE REGULATIONS

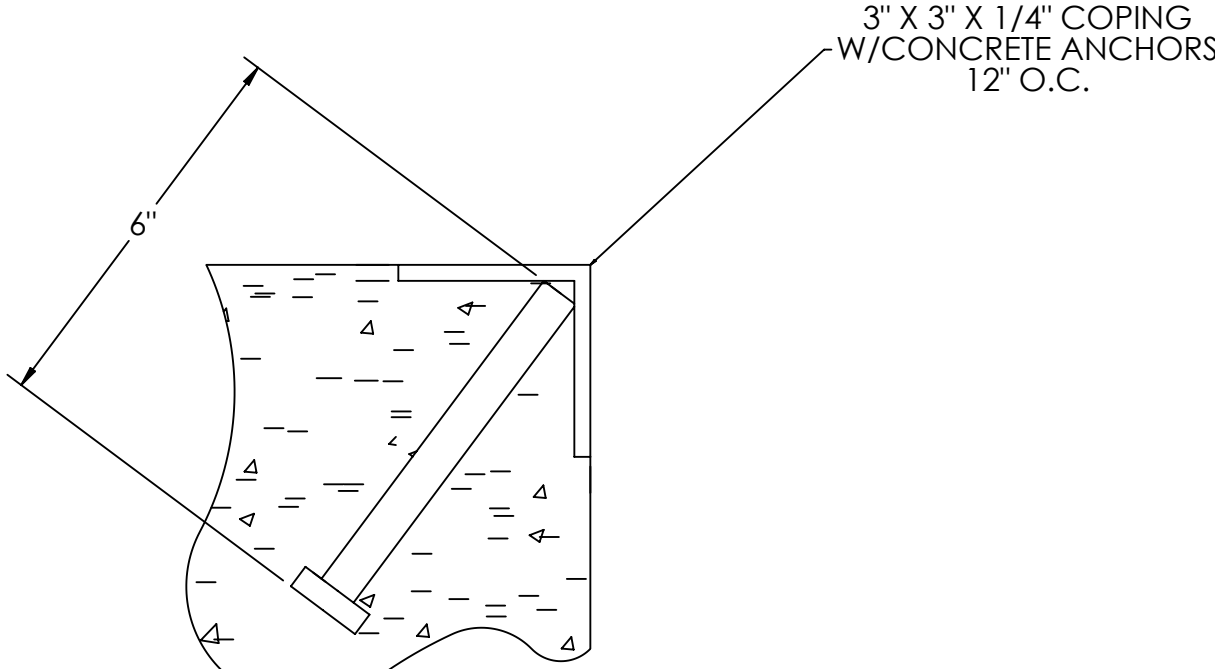
⑩ FOUNDATION MUST EXTEND A MINIMUM OF 12" BELOW THE FROST PENETRATION LINE

(REVISION #) DATE S. JOHNSON 04/04/2017		DRAWN BY DATE S. JOHNSON 04/04/2017		FIELD PROPOSAL DATE S. JOHNSON 04/04/2017			
(TREATMENT) NONE		THIS DRAWING AND INFORMATION CONTAINED HEREIN IS AND REMAINS THE PROPERTY OF RICE LAKE WEIGHING SYSTEMS, INC. HEREINAFTER REFERRED TO AS "RICE LAKE". IT IS TO BE USED ONLY FOR THE RUMBO PROPOSAL AND/OR ITS CUSTOMER'S CHARGE. IT SHALL NOT BE REPRODUCED OR COPIED WITHOUT REWRIS SPECIFIC WRITTEN CONSENT AND SHALL BE IMMEDIATELY RETURNED UPON REQUEST.		UNLESS OTHERWISE SPECIFIED UNITS SHALL BE INCHES. ALL THREADS TO BE CLASS 2 ALL DIMENSIONS APPLICABLE AFTER TREATMENT		FOUNDATION, CONCRETE PIER, 40' x 11' OTR LOPRO SERIES TRUCK SCALE	
(NUMBER OF CIRCLES) MINIMUM CRANE CAPACITY:		 DO NOT SCALE DRAWING SURFACE FINISH ✓ ANGLE: ±		TOLERANCES UNLESS OTHERWISE SPECIFIED .XX; ± .XXX; ± ANGLE: ±		(DESCRIPTION) SCALE: 1:45 SHEET 1 OF 3 MATERIAL:	
(ESTIMATED WEIGHT POUNDS)				THIRD ANGLE PROJECTION		182751	
						REV A	

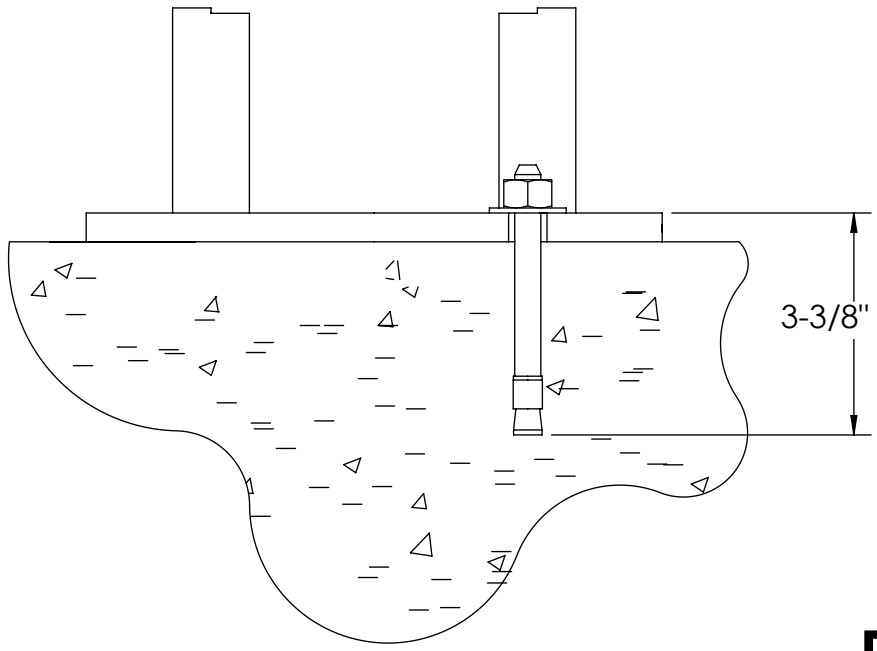
CONCRETE SCHEDULE			
		VOLUME (CUBIC YARDS)	
APPROACHES		8.4	
CLEANOUT		4.5	
PIERS		10.0	
TOTAL		22.9	
MISC. STEEL			
PIT COPING	3 X 3 X 1/4	23 LN. FT	113 LBS

VOLUME SHOWN FOR STATED PIER DEPTH.
ADD ADDITIONAL CONCRETE FOR
DEEPER PIERS AS NEEDED.

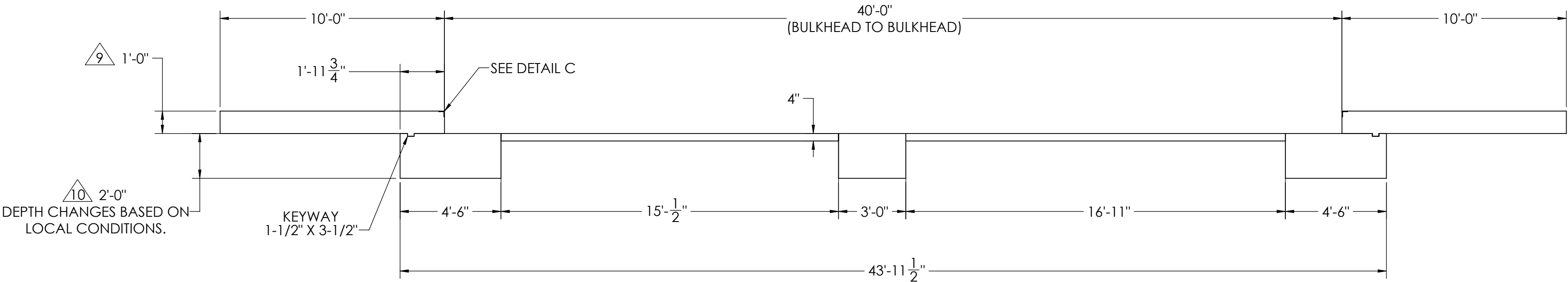
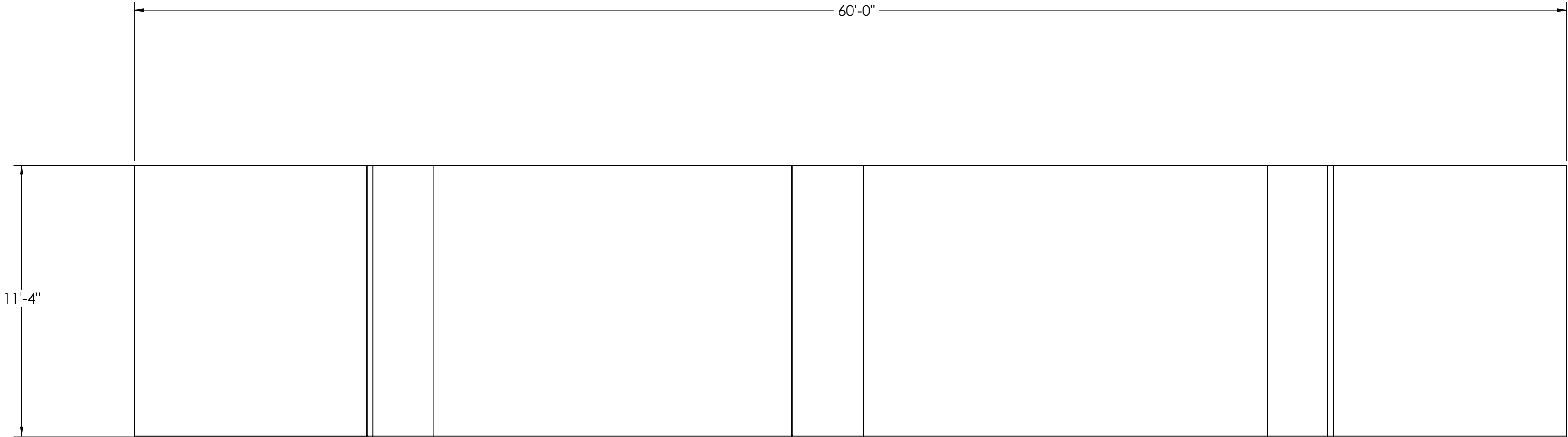
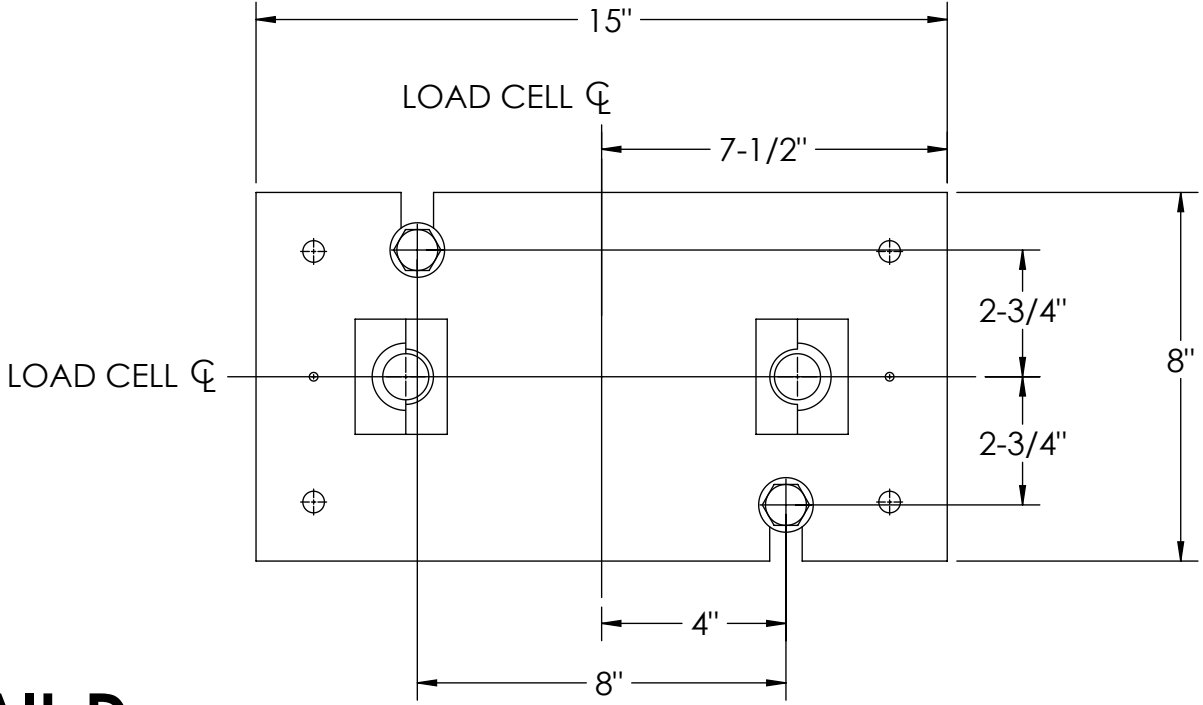
CONCRETE LAYOUT



DETAIL C

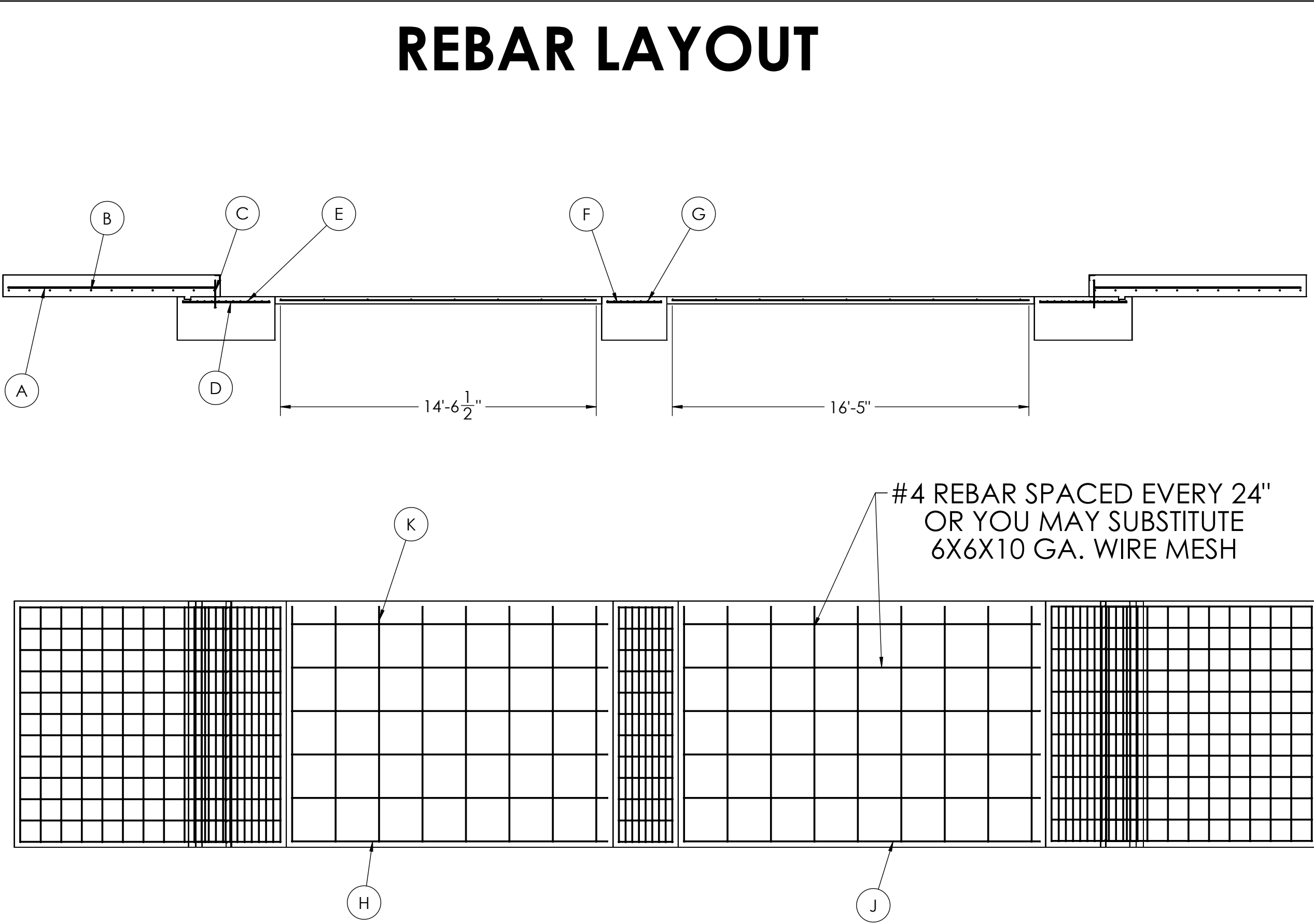


DETAIL D



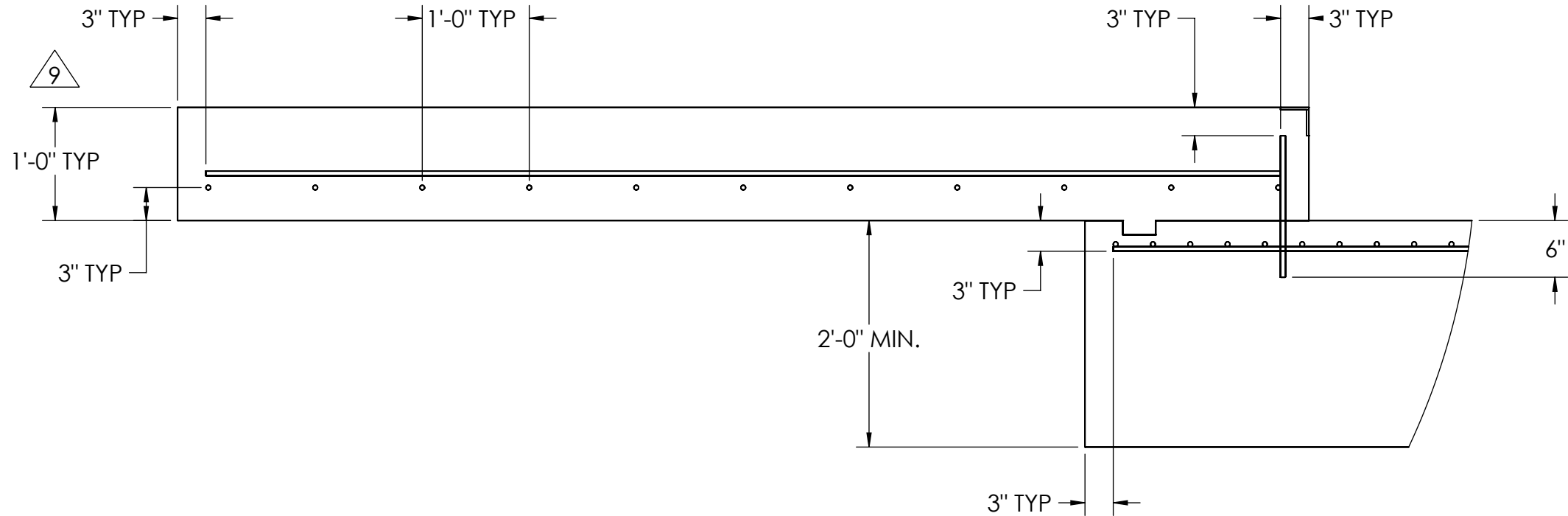
DESIGNED BY/DATE S.JOHNSON 04/04/2017	DRAWN BY/DATE S.JOHNSON 04/04/2017	PIER APPROVAL/DATE S.JOHNSON 04/04/2017	RICE LAKE WEIGHING SYSTEMS	
TREATMENT NONE	THIS DRAWING AND INFORMATION CONTAINED HEREIN IS AND REMAINS THE PROPERTY OF RICE LAKE WEIGHING SYSTEMS INC. - HEREINAFTER REFERRED TO AS RLWS. IT MAY BE USED ONLY FOR RLWS' PROPOSAL AND/OR ITS CUSTOMER'S ORDERS. IT SHALL NOT BE DISCLOSED OR COPIED WITHOUT RLWS SPECIFIC WRITTEN CONSENT AND SHALL BE IMMEDIATELY RETURNED UPON REQUEST.	UNLESS OTHERWISE SPECIFIED UNITS TO BE INCHES ALL THREADS TO BE CLASS 2 ALL DIMENSIONS APPLICABLE AFTER TREATMENT	DESCRIPTION FOUNDATION, CONCRETE PIER, 40' X 11' OTR LOPRO SERIES TRUCK SCALE	
NUMBER OF CRANES: MINIMUM CRANE CAPACITY: ESTIMATED WEIGHT (POUNDS)	DO NOT SCALE DRAWING SURFACE FINISH ✓	TOLERANCES DRAWING TOLERANCES UNLESS OTHERWISE SPECIFIED .XX: .XXX: ANGLE:	SCALE 1:45	SHEET 2 OF 3
THIRD ANGLE PROJECTION FPM		182751		REV. A

MATERIAL REQUIRMENTS				
REBAR SCHEDULE				
BAL. NO.	QUANTITY	LENGTH (FT-IN.)	DESCRIPTION	WEIGHT
A	24	9' 6"	# 4 @ 12 O.C.	152
B	22	10' 10"	# 4 @ 12 O.C.	159
C	24	1' 3"	# 4 @ 12 O.C.	20
D	22	4' 0"	# 4 @ 12 O.C.	59
E	26	10' 10"	# 4 @ 4 O.C.	188
F	12	2' 6"	# 4 @ 12 O.C.	20
G	9	10' 10"	# 4 @ 4 O.C.	65
CLEANOUT SCHEDULE				
H	6	14' 6 1/2"	# 4 @ 24 O.C.	58
J	6	16' 5"	# 4 @ 24 O.C.	66
K	17	10' 10"	# 4 @ 24 O.C.	123
TOTAL WEIGHT OF REBAR (LBS.)				911
TOTAL LENGTH OF REBAR (FT.)				1363
WIRE MESH	6 X 6-10 GA.		363 SQ FT	

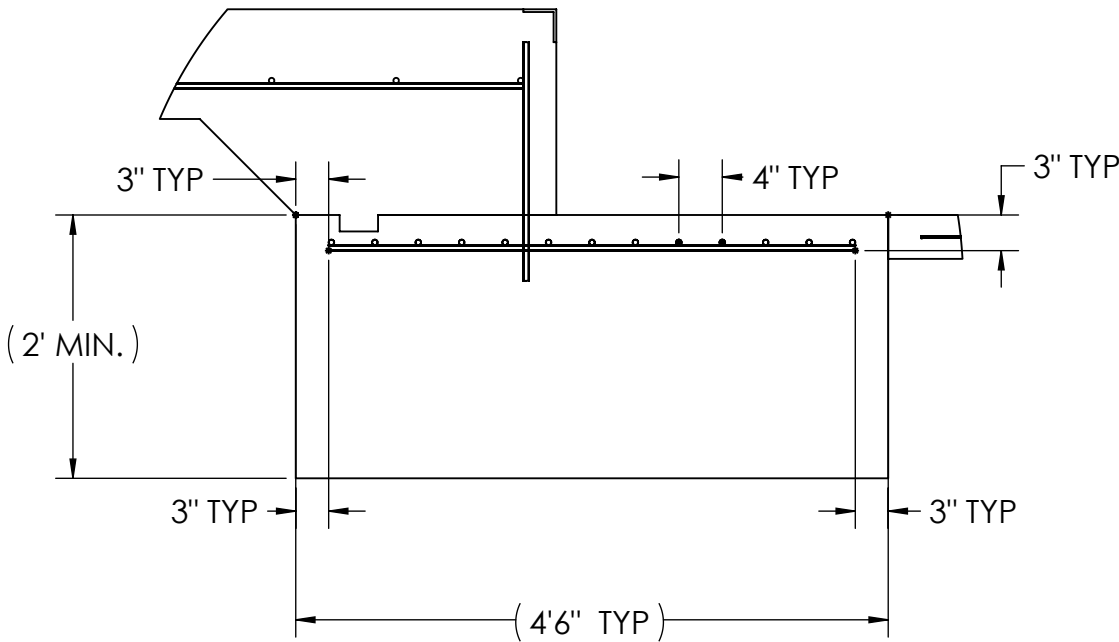


APPROACH STANDARD VIEWS

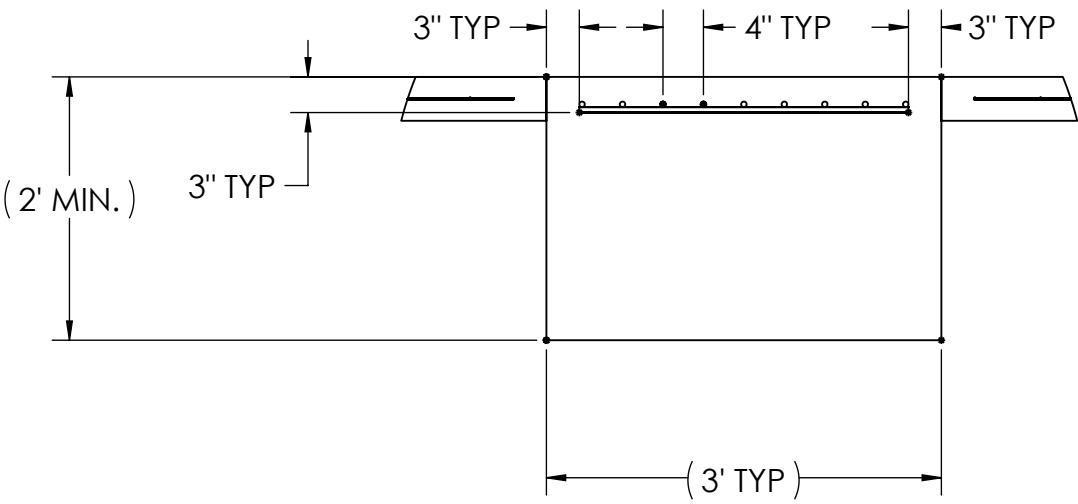
NOTES: 1) LEFT AND RIGHT APPROACHES ARE MIRROR IMAGES OF EACH OTHER AND CONTAIN AN IDENTICAL PART LIST



APPROACH PIER STANDARD VIEWS



PIER STANDARD VIEWS



DESIGNED BY: JGMS S. JOHNSON 04/04/2017		DRAWN BY: JGMS S. JOHNSON 04/04/2017		PIER APPROVAL: JGMS S. JOHNSON 04/04/2017		<div>THIS DRAWING AND INFORMATION CONTAINED HEREIN IS AND REMAINS THE PROPERTY OF RICE LAKE WEIGHING SYSTEMS INC. - HEREINAFTER REFERRED TO AS RLWS. IT MAY BE USED ONLY FOR RLWS' PROPOSAL AND/OR ITS CUSTOMER'S ORDERS. IT SHALL NOT BE DISCLOSED OR COPIED WITHOUT RLWS' SPECIFIC WRITTEN CONSENT AND SHALL BE IMMEDIATELY RETURNED UPON REQUEST.</div>	
TREATMENT NONE		UNLESS OTHERWISE SPECIFIED UNITS TO BE INCHES ALL THREADS TO BE CLASS 2 ALL DIMENSIONS APPLICABLE AFTER TREATMENT		DESCRIPTION FOUNDATION, CONCRETE PIER, 40' X 11' OTR LOPRO SERIES TRUCK SCALE		<div>RICE LAKE WEIGHING SYSTEMS</div>	
NUMBER OF CRANES: MINIMUM CRANE CAPACITY: ESTIMATED WEIGHT (POUNDS):		DO NOT SCALE DRAWING SURFACE FINISH TOLERANCES DRAWING TOLERANCES UNLESS OTHERWISE SPECIFIED .XX: ± .XXX: ± ANGLE: ±		SCALE 1:48	SHEET 3 OF 3	MATERIAL	
THIRD ANGLE PROJECTION		182751		REV A			