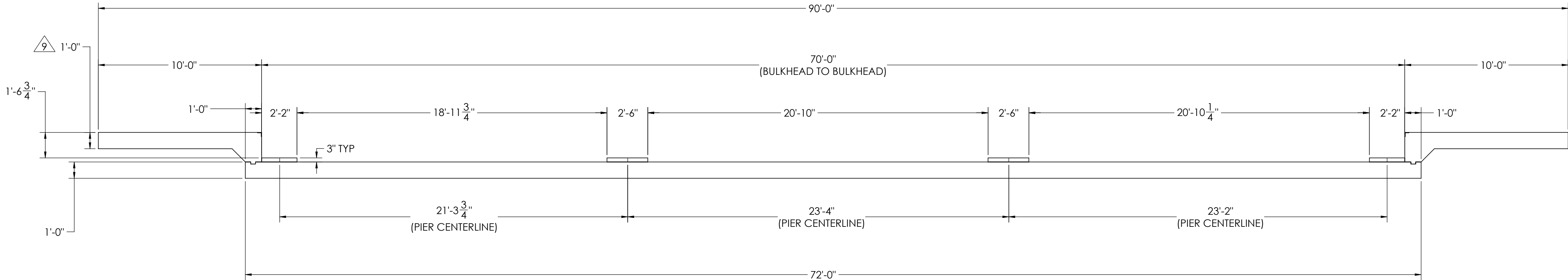
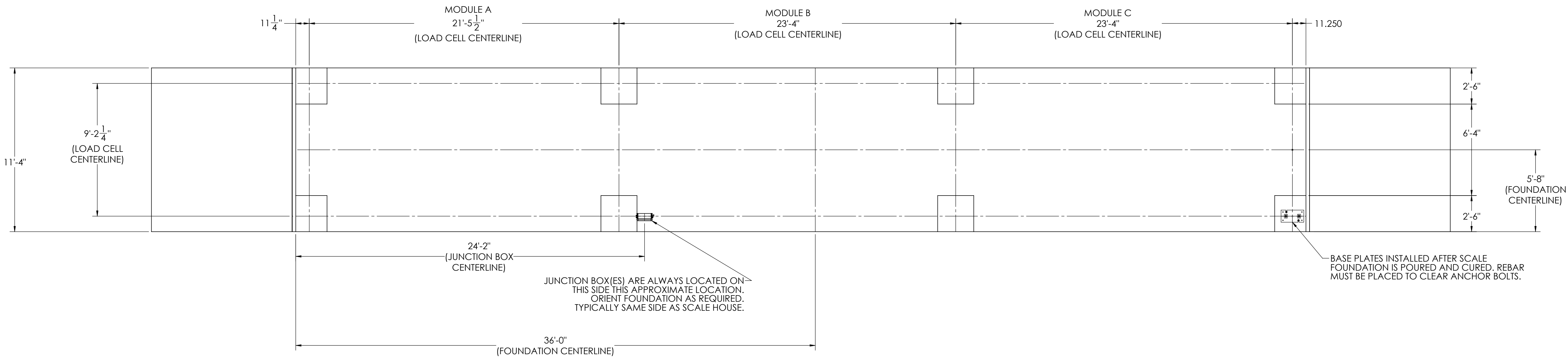


REVISION				
REV.	ECO	DESCRIPTION	INIT	DATE
A		ENGINEERING RELEASE	SPJ	05/26/2017

DETAILS



NOTES:

- 1) CONCRETE: f'c = 3000 PSI @ 28 DAYS.
- 2) REINFORCING STEEL: DEFORMED BARS ASTM A615 GRADE 60.
- 3) STATE AND LOCAL AGENCIES MAY HAVE VARIOUS REQUIREMENTS FOR APPROACH RAMP LENGTH, PITCH, AND FOR CLEAN OUT HEIGHT. PLEASE CHECK WITH ALL AGENCIES PRIOR TO CONSTRUCTION.
- 4) MONOLITHIC POUR OF SLAB AND APPROACHES IS ALLOWED, AT CONTRACTOR'S DISCRETION.
- 5) DEVELOP AND MAINTAIN SITE GRADES WHICH WILL RAPIDLY DRAIN SURFACE AND ROOF RUN-OFF AWAY FROM FOUNDATION.
- 6) FOOTINGS HAVE BEEN DESIGNED FOR A MINIMUM SOIL PRESSURE OF 1500 PSF, IT WILL BE THE RESPONSIBILITY OF OTHERS TO VERIFY THIS VALUE.
- 7) WHERE REINFORCING BARS ARE SHOWN CONTINUOUS, LAP SPLICE BARS 40 DIAMETERS.
- 8) APPROACHES TO BE A COMMON PLANE WITHIN 1/4".

△ 9 APPROACH THICKNESS MAY BE 10" MINIMUM WHERE ALLOWED BY STATE REGULATIONS

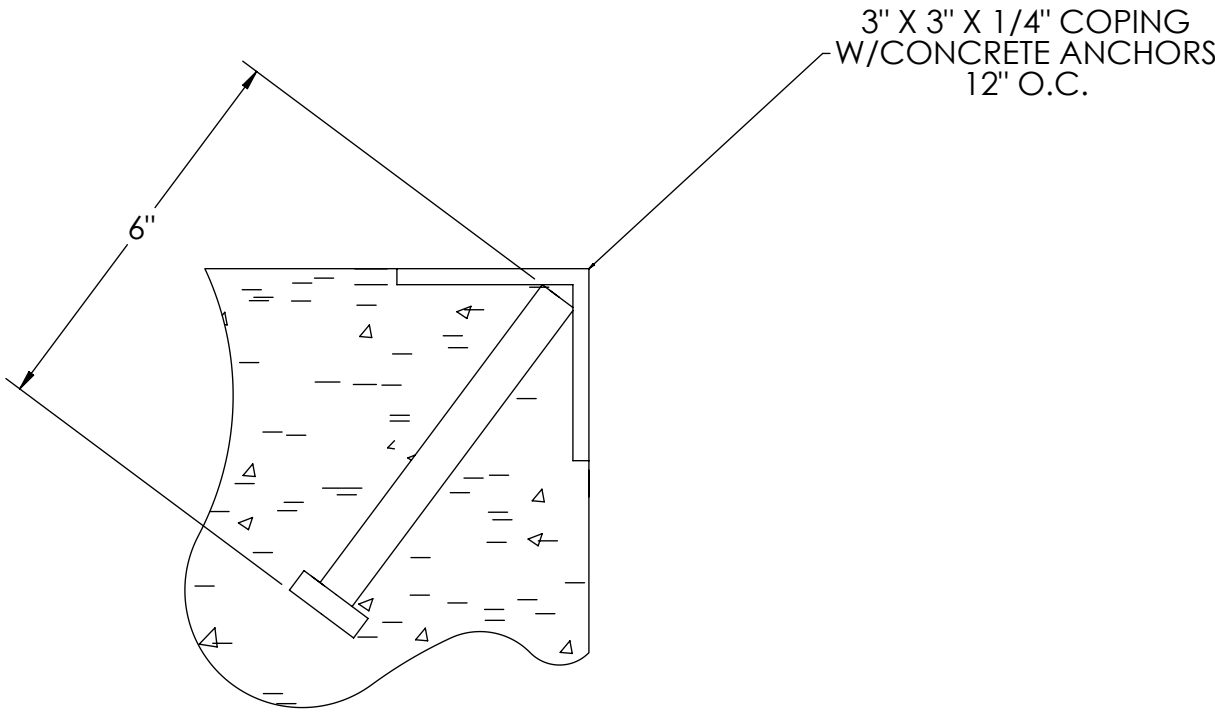
- 10) IF FROST CAN PENETRATE BELOW FOUNDATION, AT LEAST 12 INCHES OF WELL DRAINED, COMPACTED BASE MATERIAL MUST BE PROVIDED UNDER FOUNDATION

DESIGNED BY: JGMS S. JOHNSON 05/26/2017	DRAWN BY: JGMS S. JOHNSON 05/26/2017	PIER APPROVAL DATE: S. JOHNSON 09/28/2017	RICE LAKE WEIGHING SYSTEMS	
TREATMENT NONE	THIS DRAWING AND INFORMATION CONTAINED HEREIN IS AND REMAINS THE PROPERTY OF RICE LAKE WEIGHING SYSTEMS INC. - HEREINAFTER REFERRED TO AS RLWS. IT MAY BE USED ONLY FOR RLWS' PROPOSAL AND/OR ITS CUSTOMER'S ORDERS. IT SHALL NOT BE DISCLOSED OR COPIED WITHOUT RLWS SPECIFIC WRITTEN CONSENT AND SHALL BE IMMEDIATELY RETURNED UPON REQUEST.		UNLESS OTHERWISE SPECIFIED UNITS TO BE INCHES ALL THREADS TO BE CLASS 2 ALL DIMENSIONS APPLICABLE AFTER TREATMENT	
NUMBER OF CRANES: MINIMUM CRANE CAPACITY: ESTIMATED WEIGHT (POUNDS):	DO NOT SCALE DRAWING SURFACE FINISH ✓	TOLERANCES DRAWING TOLERANCES UNLESS OTHERWISE SPECIFIED .XX: ± .XXX: ± ANGLE: ±	SCALE 1:45	SHEET 1 OF 3
FOUNDATION, CONCRETE SLAB 70' X 11'			OTR SERIES TRUCK SCALE	
THIRD ANGLE PROJECTION			183865	REV. A

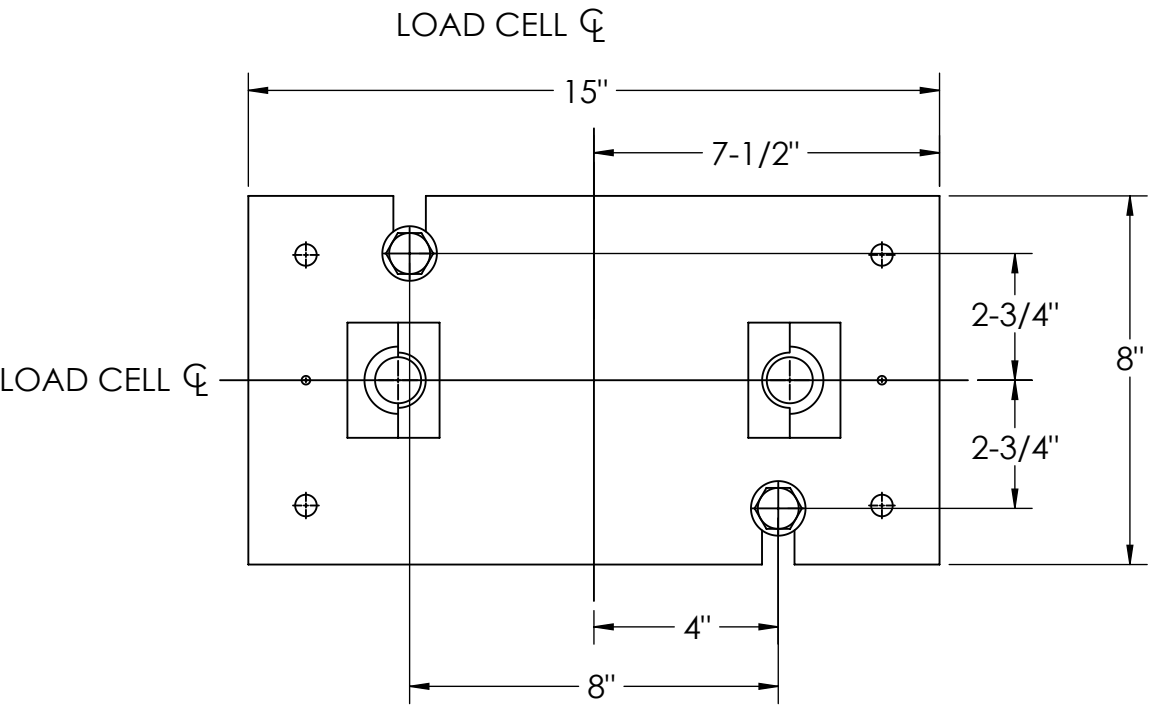
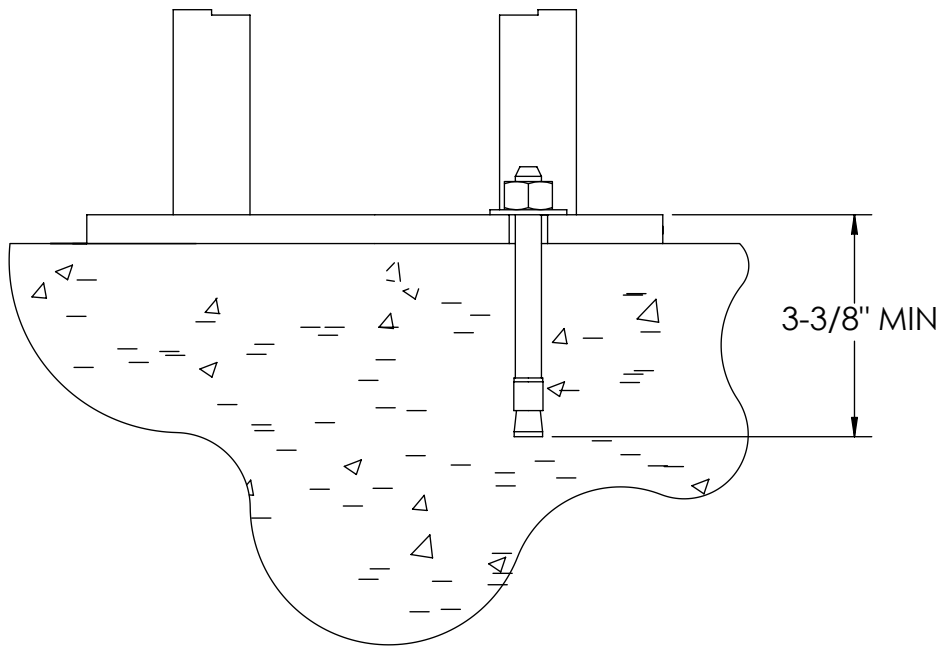
CONCRETE SCHEDULE			
		VOLUME (CUBIC YARDS)	
APPROACHES		9.4	
STUB PIERS		0.4	
FLOOR		30.4	
TOTAL		40.2	
MISC. STEEL			
PIT COPING	3 X 3 X 1/4	23 LN .FT	113 LBS

CONCRETE LAYOUT

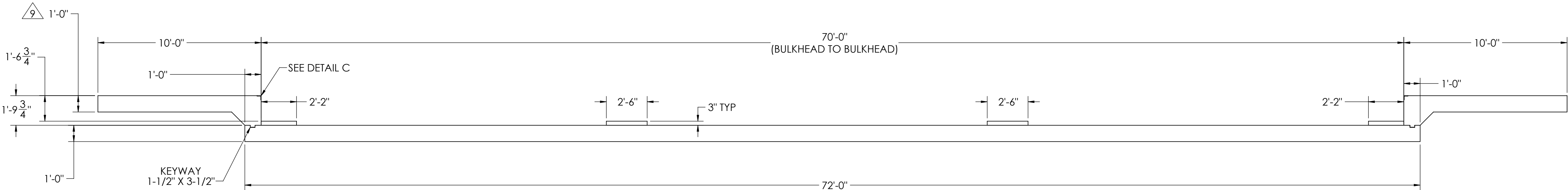
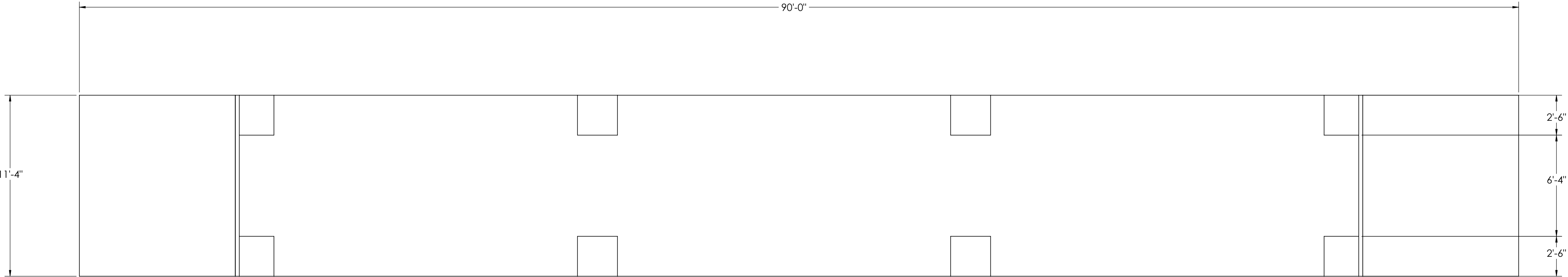
REVISION			INIT	DATE
REV	ECO	DESCRIPTION		



DETAIL C

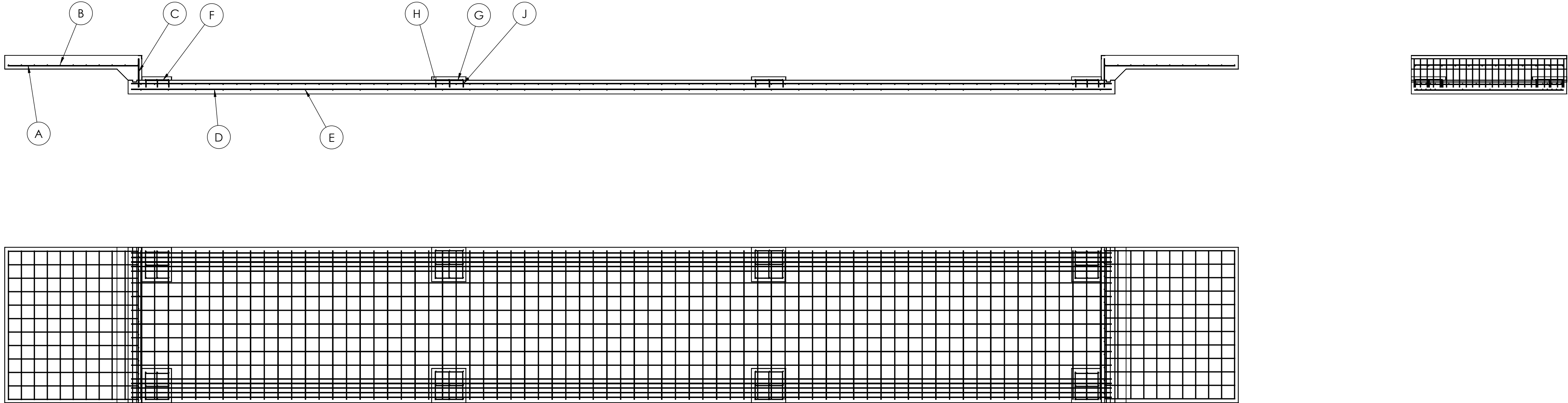


DETAIL D



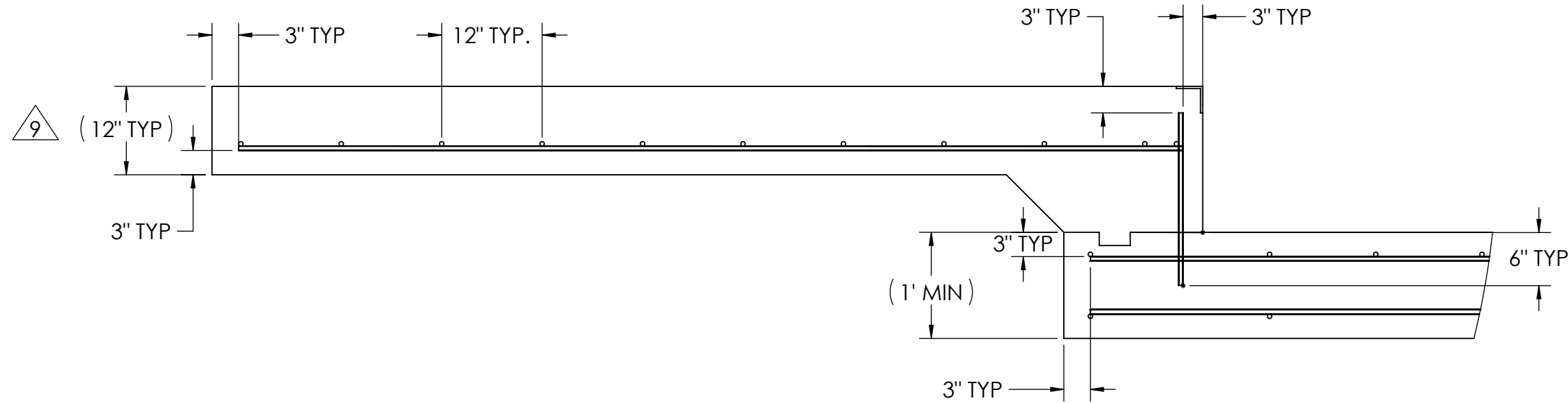
DESIGNED BY: JONAS S. JOHNSON 05/26/2017	DRAWN BY: JONAS S. JOHNSON 05/26/2017	FIELD APPROVAL: JONAS S. JOHNSON 09/28/2017	RICE LAKE® WEIGHING SYSTEMS	
TREATMENT NONE	THIS DRAWING AND INFORMATION CONTAINED HEREIN IS AND REMAINS THE PROPERTY OF RICE LAKE WEIGHING SYSTEMS INC. - HEREINAFTER REFERRED TO AS RLWS. IT MAY BE USED ONLY FOR RLWS' PROPOSAL AND/OR ITS CUSTOMER'S ORDERS. IT SHALL NOT BE DISCLOSED OR COPIED WITHOUT RLWS' SPECIFIC WRITTEN CONSENT AND SHALL BE IMMEDIATELY RETURNED UPON REQUEST.	UNLESS OTHERWISE SPECIFIED UNITS TO BE INCHES ALL THREADS TO BE CLASS 2 ALL DIMENSIONS APPLICABLE AFTER TREATMENT	DESCRIPTION FOUNDATION, CONCRETE SLAB 70' X 11' OTR SERIES TRUCK SCALE	
NUMBER OF CRANES: MINIMUM CRANE CAPACITY: ESTIMATED WEIGHT (POUNDS)	DO NOT SCALE DRAWING SURFACE FINISH ✓ TOLERANCES DRAWING TOLERANCES UNLESS OTHERWISE SPECIFIED .XX: ± .XXX: ± ANGLE: ±	SCALE 1:45 SHEET 2 OF 3 THIRD ANGLE PROJECTION FPM	MATERIAL 183865	REV. A

MATERIAL REQUIREMENTS				
REBAR SCHEDULE				
BAL. NO.	QUANTITY	LENGTH (FT-IN.)	DESCRIPTION	WEIGHT
A	24	9' 6"	# 4 @ 12 O.C.	152
B	22	10' 10"	# 4 @ 12 O.C.	159
C	24	2' 0 3/4"	# 4 @ 12 O.C.	33
D	30	71' 6"	# 4 AS SHOWN	1433
E	107	10' 10"	# 4 AS SHOWN	774
F	12	1' 8 1/2"	# 4 @ 10 O.C.	14
G	12	2' 0 1/2"	# 5 @ 12 O.C.	26
H	24	2' 0 1/4"	# 5 @ 12 O.C.	51
J	48	0' 6"	# 5 @ 12 O.C.	25
TOTAL WEIGHT OF REBAR (LBS.)				2667
TOTAL LENGTH OF REBAR (FT.)				3938

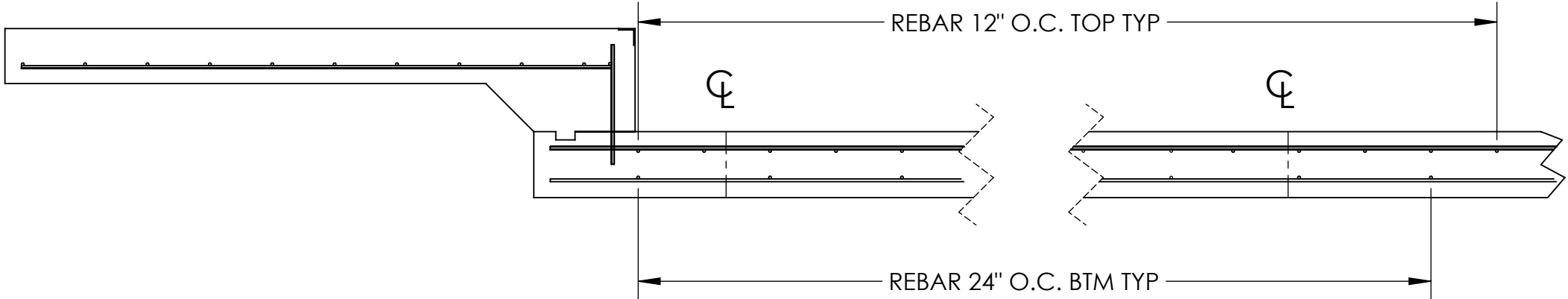


APPROACH STANDARD VIEW

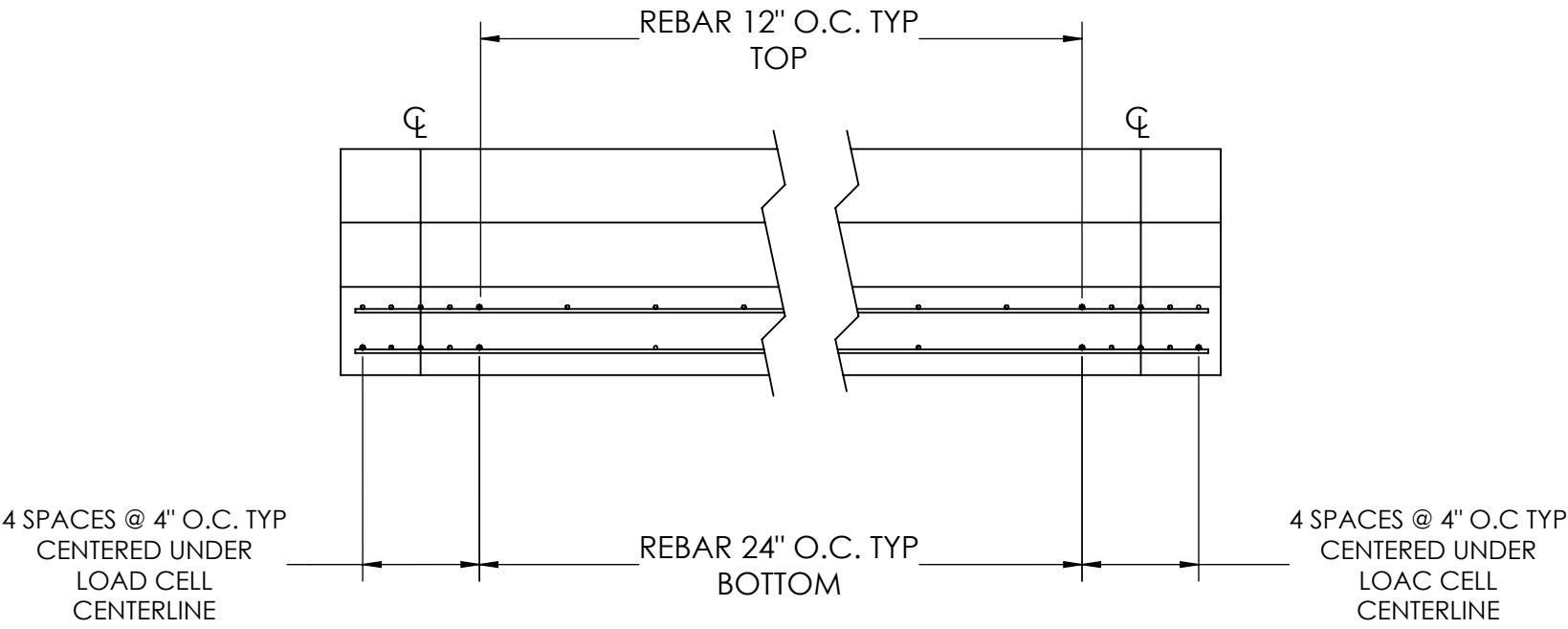
NOTES: 1) LEFT AND RIGHT APPROACHES ARE MIRROR IMAGES OF EACH OTHER AND CONTAIN AN IDENTICAL PART LIST



REBAR SPACING LENGTH



REBAR SPACING WIDTH



DESIGNED BY: JONES S. JOHNSON 05/26/2017	DRAWN BY: JONES S. JOHNSON 05/26/2017	FIELD APPROVAL: JONES S. JOHNSON 09/28/2017	RICE LAKE WEIGHING SYSTEMS	
TREATMENT NONE	THIS DRAWING AND INFORMATION CONTAINED HEREIN IS AND REMAINS THE PROPERTY OF RICE LAKE WEIGHING SYSTEMS INC. - HEREINAFTER REFERRED TO AS RLWS. IT MAY BE USED ONLY FOR RLWS' PROPOSAL AND/OR ITS CUSTOMER'S ORDERS. IT SHALL NOT BE DISCLOSED OR COPIED WITHOUT RLWS' SPECIFIC WRITTEN CONSENT AND SHALL BE IMMEDIATELY RETURNED UPON REQUEST.		UNLESS OTHERWISE SPECIFIED UNITS TO BE INCHES ALL THREADS TO BE CLASS 2 ALL DIMENSIONS APPLICABLE AFTER TREATMENT	
NUMBER OF CRANES: MINIMUM CRANE CAPACITY: ESTIMATED WEIGHT (POUNDS)	DO NOT SCALE DRAWING SURFACE FINISH ✓	TOLERANCES DRAWING TOLERANCES UNLESS OTHERWISE SPECIFIED .XX: ± .XXX: ± ANGLE: ±	SCALE 1:192	SHEET 3 OF 3
FOUNDATION, CONCRETE SLAB 70' X 11'			OTR SERIES TRUCK SCALE	
THIRD ANGLE PROJECTION			183865	
			REV: A	