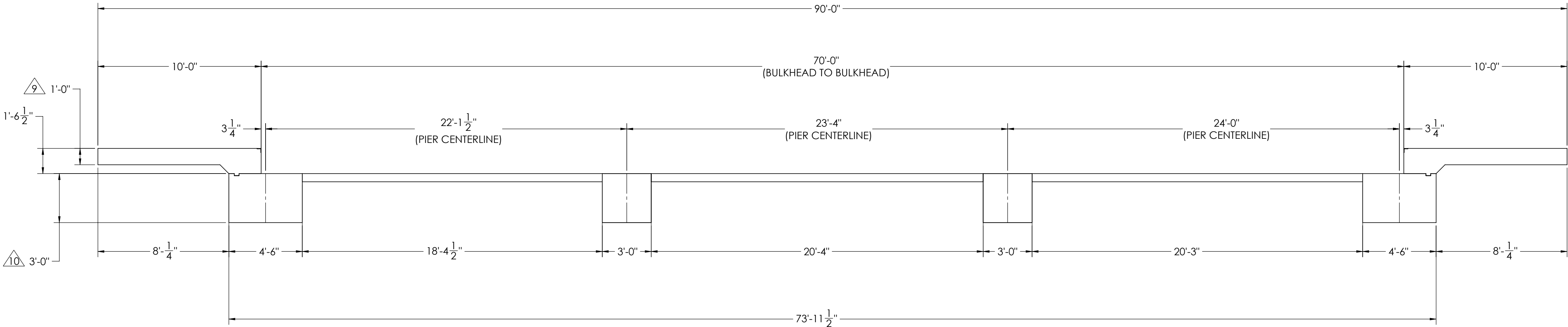
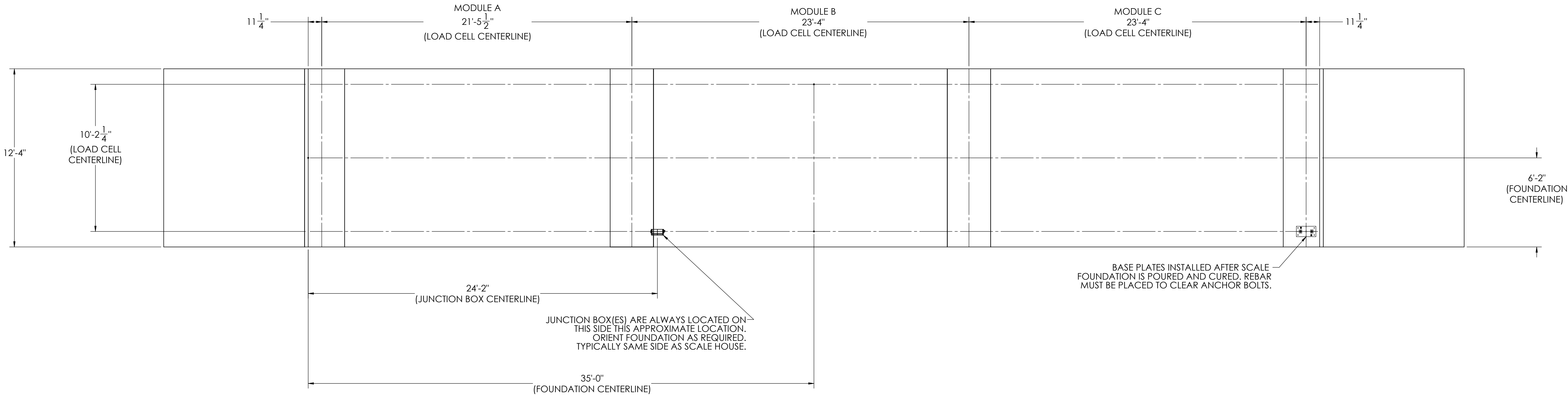


DETAILS



		REVISION		
REV.	ECO	DESCRIPTION	INIT	DATE
A		ENGINEERING RELEASE	SPJ	06/15/2017



NOTES:

- 1) CONCRETE: f<sub>c</sub> = 3000 PSI @ 28 DAYS.
- 2) REINFORCING STEEL: DEFORMED BARS ASTM A615 GRADE 60.
- 3) STATE AND LOCAL AGENCIES MAY HAVE VARIOUS REQUIREMENTS FOR APPROACH RAMP LENGTH, PITCH, AND FOR CLEAN OUT HEIGHT. PLEASE CHECK WITH ALL AGENCIES PRIOR TO CONSTRUCTION.
- 4) MONOLITHIC POUR IS ALLOWED AT CONTRACTOR'S DISCRETION.
- 5) DEVELOP AND MAINTAIN SITE GRADES WHICH WILL RAPIDLY DRAIN SURFACE AND ROOF RUN-OFF AWAY FROM FOUNDATION.
- 6) FOOTINGS HAVE BEEN DESIGNED FOR A MINIMUM SOIL PRESSURE OF 2500 PSF. IT WILL BE THE RESPONSIBILITY OF OTHERS TO VERIFY THIS VALUE.
- 7) WHERE REINFORCING BARS ARE SHOWN CONTINUOUS, LAP SPLICE BARS 40 DIAMETERS.
- 8) APPROACHES TO BE A COMMON PLANE WITHIN 1/4".

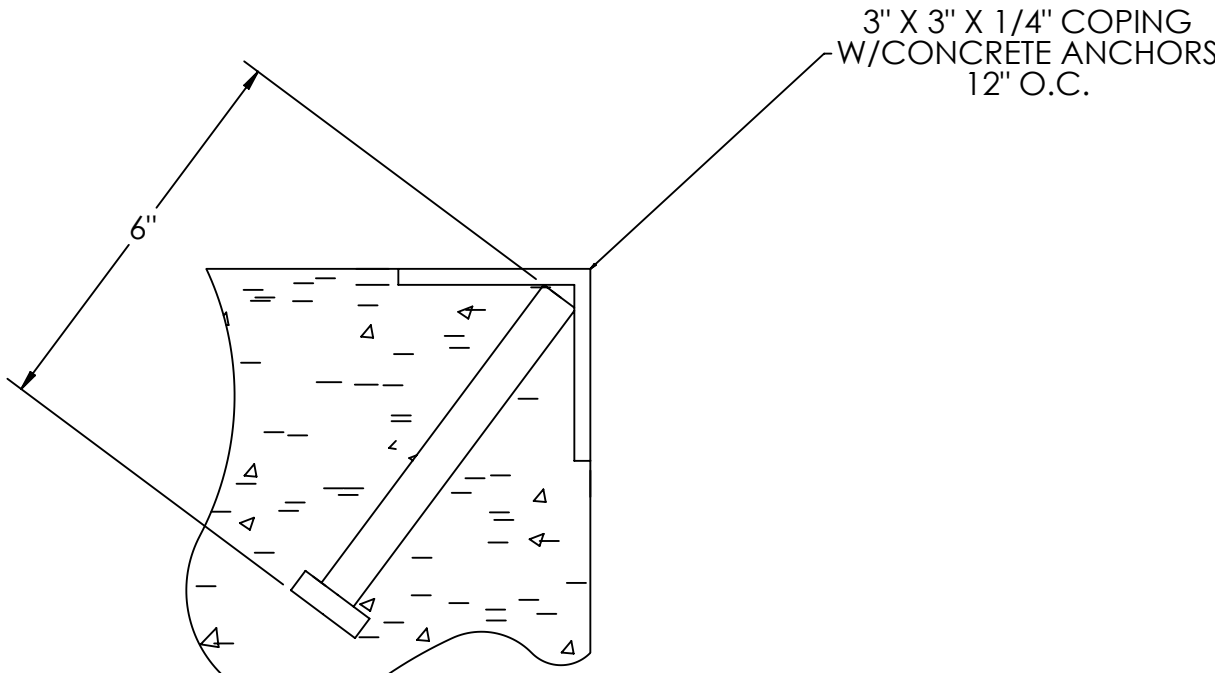
- △9 APPROACH THICKNESS MAY BE 10" MINIMUM WHERE ALLOWED BY STATE REGULATIONS
- △10 FOUNDATION MUST EXTEND A MINIMUM OF 12" BELOW THE FROST PENETRATION LINE

DESIGNED BY DATE S. JOHNSON 02/22/2017		DRAWN BY DATE S. JOHNSON 06/15/2017		PIER APPROVAL DATE S. JOHNSON 06/15/2017		<div>FOUNDATION, CONCRETE PIER 70' X 12'</div> <div>OTR SERIES TRUCK SCALE</div>	
TREATMENT  NONE		THIS DRAWING AND INFORMATION CONTAINED HEREIN IS AND REMAINS THE PROPERTY OF RICE LAKE WEIGHING SYSTEMS INC. - HEREINAFTER REFERRED TO AS RLWS. IT MAY BE USED ONLY FOR RLWS' PROPOSAL AND/OR ITS CUSTOMER'S ORDERS. IT SHALL NOT BE DISCLOSED OR COPIED WITHOUT RLWS SPECIFIC WRITTEN CONSENT AND SHALL BE IMMEDIATELY RETURNED UPON REQUEST.		UNLESS OTHERWISE SPECIFIED UNITS TO BE INCHES ALL THREADS TO BE CLASS 2 ALL DIMENSIONS APPLICABLE AFTER TREATMENT			
NUMBER OF CRANES:  MINIMUM CRANE CAPACITY:  ESTIMATED WEIGHT (POUNDS)		TOLERANCES DRAWINGS TOLERANCES UNLESS OTHERWISE SPECIFIED SURFACE FINISH DO NOT SCALE ✓ ANGLE: ±		SCALE 1:45 SHEET 1 OF 3		MATERIAL  184180	
				THIRD ANGLE PROJECTION FPM		REV. A	

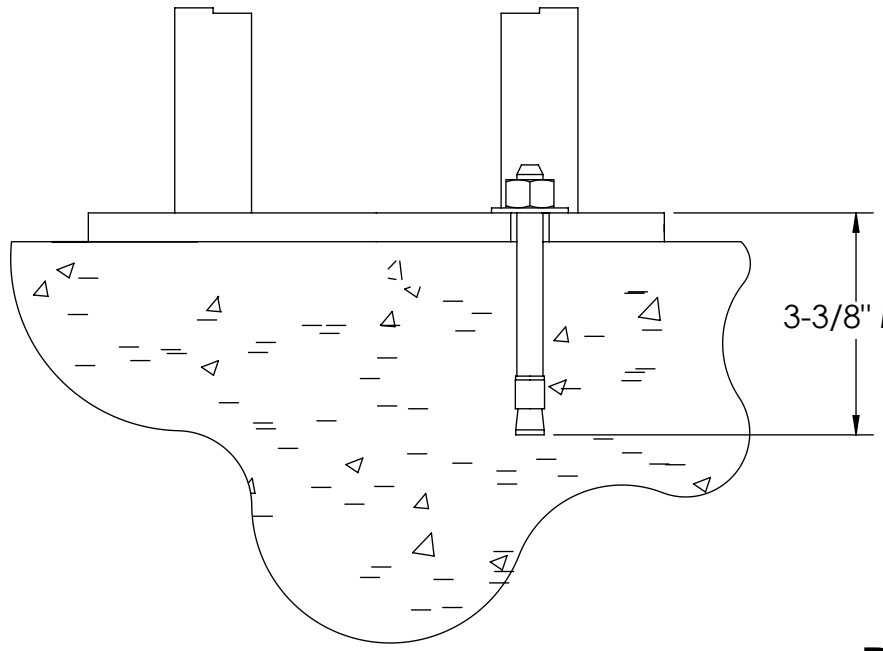
CONCRETE SCHEDULE			
		VOLUME (CUBIC YARDS)	
APPROACHES		10.4	
CLEANOUT		13.5	
PIERS		20.6	
TOTAL		44.4	
MISC. STEEL			
PIT COPING	3 X 3 X 1/4	23 LN. FT	113 LBS

VOLUME SHOWN FOR STATED PIER DEPTH.  
ADD ADDITIONAL CONCRETE FOR  
DEEPER PIERS AS NEEDED.

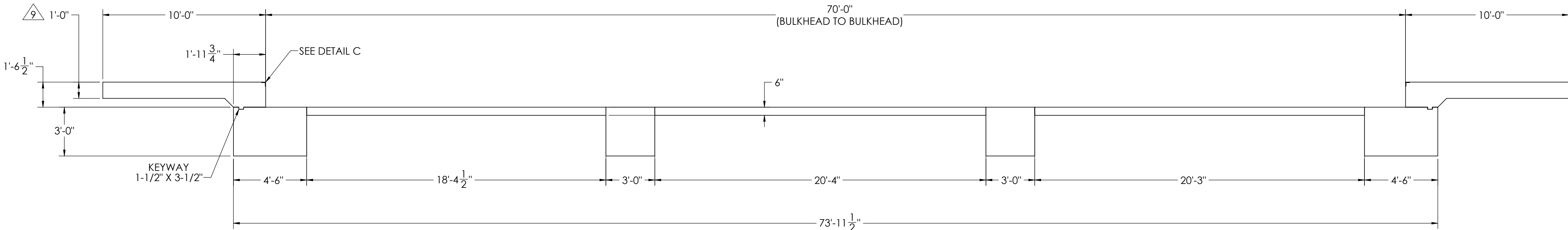
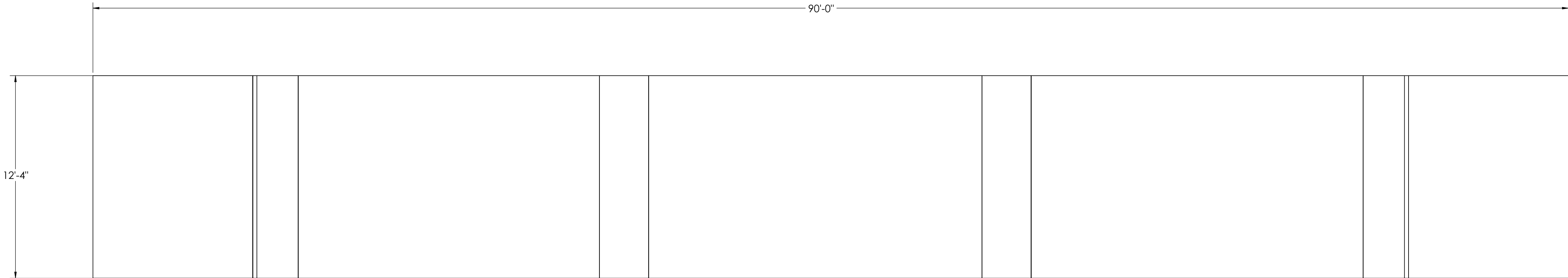
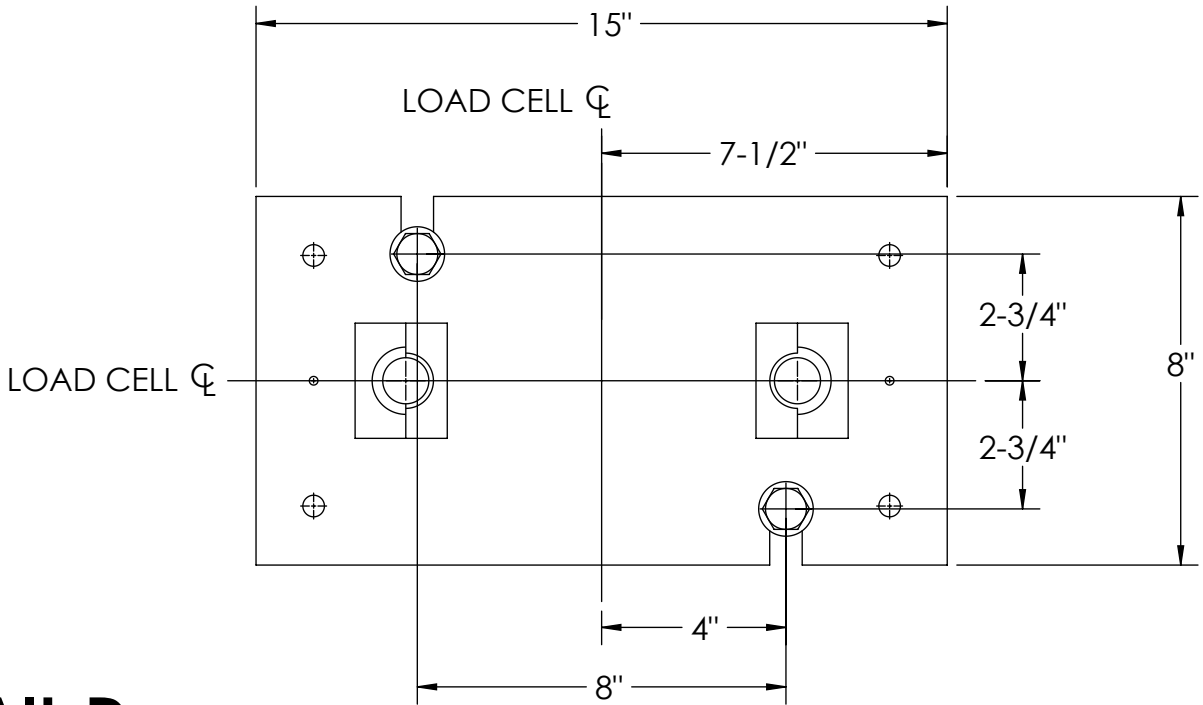
## CONCRETE LAYOUT



DETAIL C

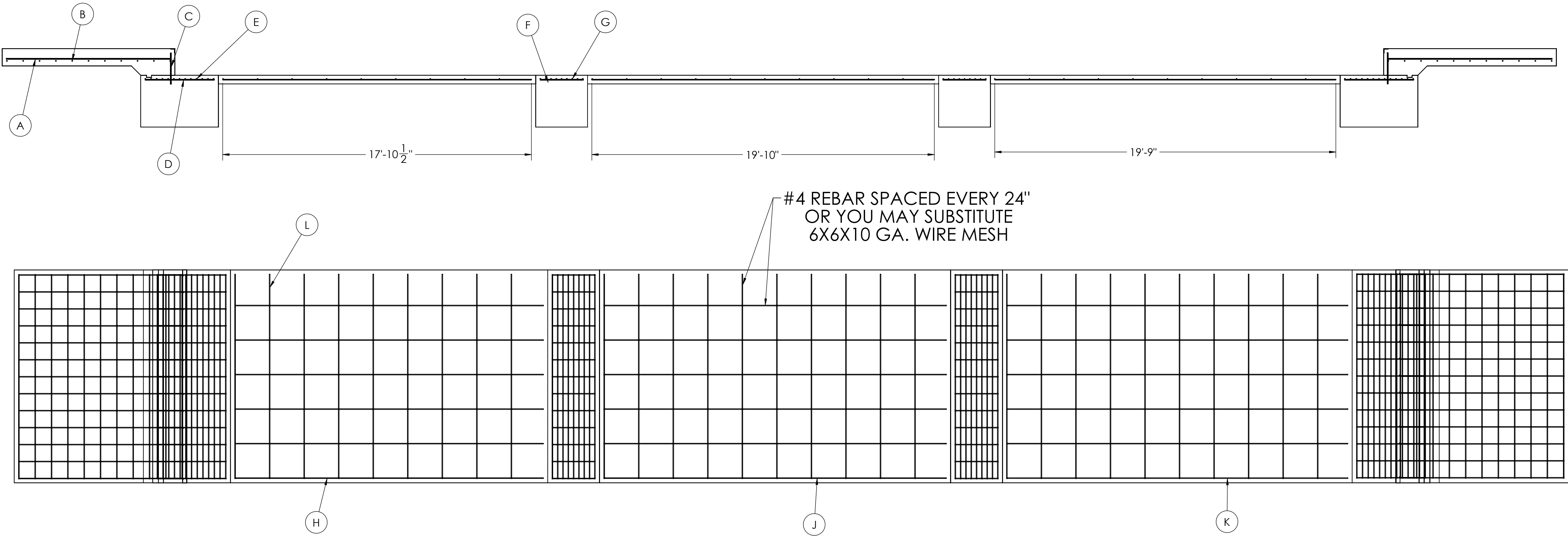


DETAIL D



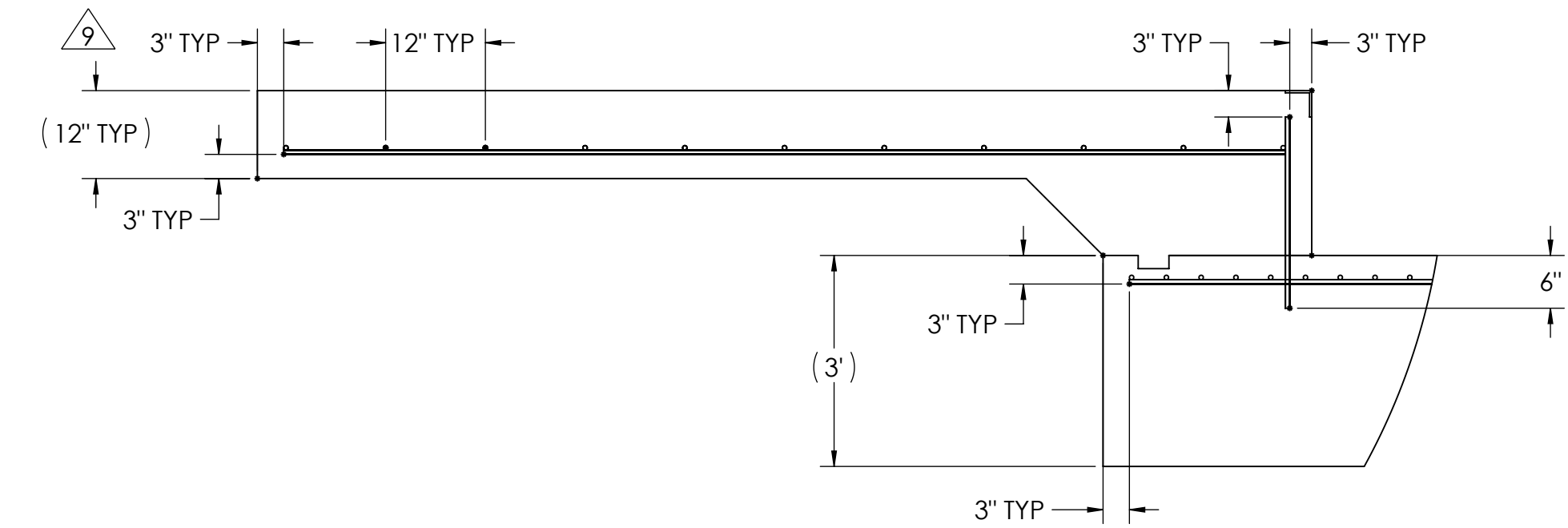
DESIGNED BY: JAMES S. JOHNSON 02/22/2017	DRAWN BY: JAMES S. JOHNSON 06/15/2017	PIER APPROVAL DATE: S. JOHNSON 06/15/2017	<b>RICE LAKE</b> WEIGHING SYSTEMS	
TREATMENT  NONE	THIS DRAWING AND INFORMATION CONTAINED HEREIN IS AND REMAINS THE PROPERTY OF RICE LAKE WEIGHING SYSTEMS INC. - HEREINAFTER REFERRED TO AS RLWS. IT MAY BE USED ONLY FOR RLWS' PROPOSAL AND/OR ITS CUSTOMER'S ORDERS. IT SHALL NOT BE DISCLOSED OR COPIED WITHOUT RLWS' SPECIFIC WRITTEN CONSENT AND SHALL BE IMMEDIATELY RETURNED UPON REQUEST.	UNLESS OTHERWISE SPECIFIED UNITS TO BE INCHES ALL THREADS TO BE CLASS 2 ALL DIMENSIONS APPLICABLE AFTER TREATMENT	DESCRIPTION FOUNDATION, CONCRETE PIER 70' X 12' OTR SERIES TRUCK SCALE	
NUMBER OF CRANES: MINIMUM CRANE CAPACITY: ESTIMATED WEIGHT (POUNDS)	DO NOT SCALE DRAWING SURFACE FINISH TOLERANCES UNLESS OTHERWISE SPECIFIED .XX: .XXX: ANGLE:	SCALE 1:45 SHEET 2 OF 3 MATERIAL 184180	REV A	

MATERIAL REQUIREMENTS				
REBAR SCHEDULE				
BAL. NO.	QUANTITY	LENGTH (FT-IN.)	DESCRIPTION	WEIGHT
A	26	9' 6"	# 4 @ 12 O.C.	165
B	26	11' 10"	# 4 @ 12 O.C.	206
C	26	1' 9 3/4"	# 4 @ 12 O.C.	31
D	26	4' 0"	# 4 @ 12 O.C.	69
E	26	11' 10"	# 4 @ 4 O.C.	206
F	26	2' 6"	# 4 @ 12 O.C.	43
G	18	11' 10"	# 4 @ 4 O.C.	142
CLEANOUT SCHEDULE				
H	6	17' 10 1/2"	# 4 @ 24 O.C.	72
J	6	19' 10"	# 4 @ 24 O.C.	79
K	6	19' 9"	# 4 @ 24 O.C.	79
L	29	11' 10"	# 4 @ 24 O.C.	229
TOTAL WEIGHT OF REBAR (LBS.)				1322
TOTAL LENGTH OF REBAR (FT.)				1979

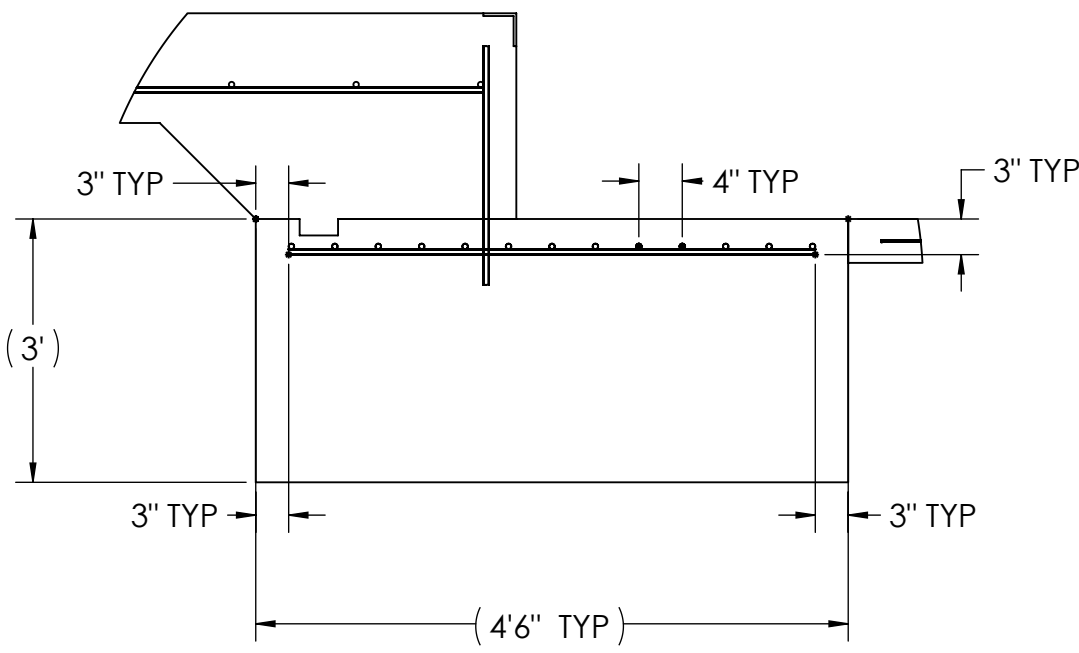


## APPROACH STANDARD VIEWS

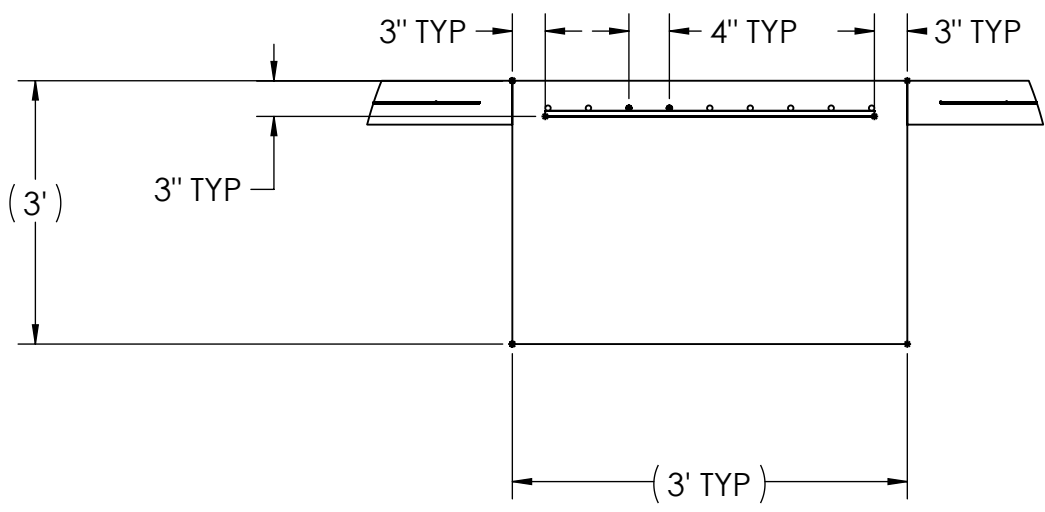
**NOTES:** 1) LEFT AND RIGHT APPROACHES ARE MIRROR IMAGES OF EACH OTHER AND CONTAIN AN IDENTICAL PART LIST



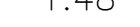


## APPROACH PIER STANDARD VIEWS



## PIER STANDARD VIEWS



DESIGNED BY DATE <b>S. JOHNSON</b> <b>02/22/2017</b>		DRAWN BY DATE <b>S. JOHNSON</b> <b>06/15/2017</b>		FIELD ERECTOR DATE <b>S. JOHNSON</b> <b>06/15/2017</b>			
TREATMENT <b>NONE</b>		THIS DRAWING AND INFORMATION CONTAINED HEREIN IS AND REMAINS THE PROPERTY OF RICE LAKE WEIGHING SYSTEMS INC. HEREINAFTER REFERRED TO AS RLS. IT MAY BE USED FOR THE RLS' PROPOSAL AND/OR ITS CUSTOMER'S PROJECT. IT SHALL NOT BE REPRODUCED OR COPIED WITHOUT RLS'S SPECIFIC WRITTEN CONSENT AND SHALL BE IMMEDIATELY RETURNED UPON REQUEST.		UNLESS OTHERWISE SPECIFIED UNITS TO BE IN INCHES ALL THREADS TO BE CLASS 2 ALL DIMENSIONS APPLICABLE AFTER TREATMENT			
NUMBER OF CRANES <b>1</b>		TOLERANCES DRAWING TOLERANCES UNLESS OTHERWISE SPECIFIED <b>.XX; ±</b> <b>.XXX; ±</b> <b>✓ ANGLE: ±</b>		DESCRIPTION <b>FOUNDATION, CONCRETE PIER 70' x 12'</b> <b>OTR SERIES TRUCK SCALE</b>			
MINIMUM CRANE CAPACITY 		DO NOT SCALE DRAWING SURFACE FINISH <b>✓</b>		SCALE <b>1:48</b>		SHEET <b>3 OF 3</b>	
ESTIMATED WEIGHT (POUNDS)				BIRD ANGLE PROJECTION 		MATERIAL <b>184180</b>	
						REV <b>A</b>	