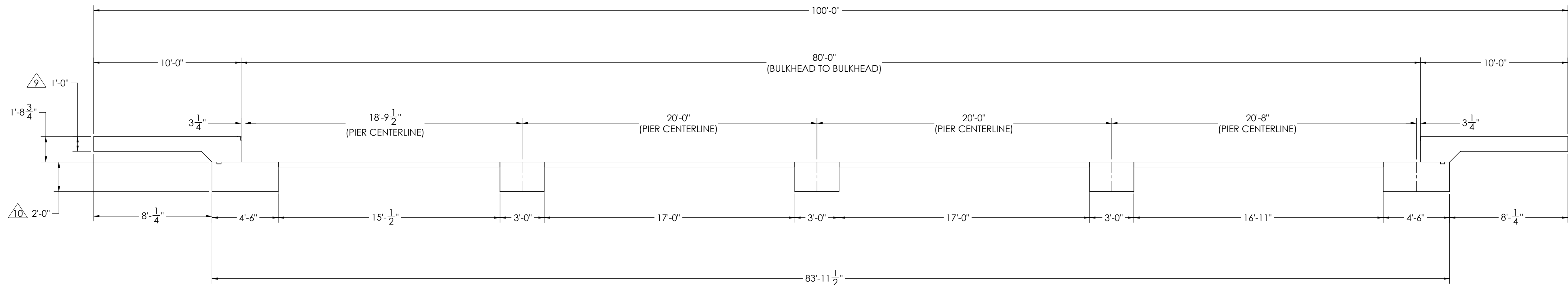
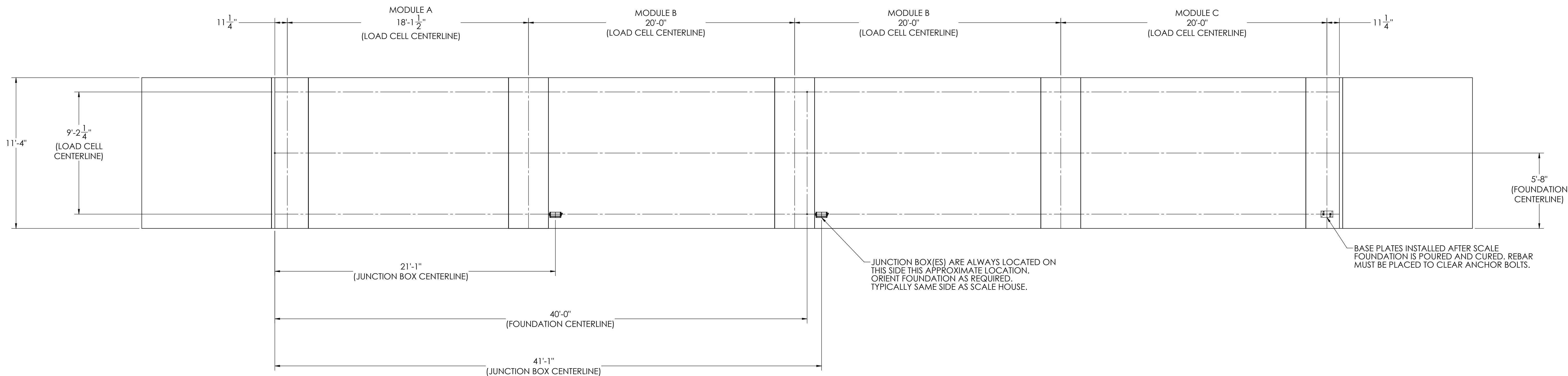


DETAILS

REVISION				
REV.	ECO	DESCRIPTION	INIT	DATE
A		ENGINEERING RELEASE	SPJ	02/24/2017










NOTES:

- 1) CONCRETE: F_C = 3000 PSI @ 28 DAYS.
- 2) REINFORCING STEEL: DEFORMED BARS ASTM A615 GRADE 60.
- 3) STATE AND LOCAL AGENCIES MAY HAVE VARIOUS REQUIREMENTS FOR APPROACH RAMP LENGTH, PITCH, AND FOR CLEAN OUT HEIGHT. PLEASE CHECK WITH ALL AGENCIES PRIOR TO CONSTRUCTION.
- 4) MONOLITHIC POUR IS ALLOWED AT CONTRACTOR'S DISCRETION.
- 5) DEVELOP AND MAINTAIN SITE GRADES WHICH WILL RAPIDLY DRAIN SURFACE AND ROOF RUN-OFF AWAY FROM FOUNDATION.
- 6) FOOTINGS HAVE BEEN DESIGNED FOR A MINIMUM SOIL PRESSURE OF 2500 PSF, IT WILL BE THE RESPONSIBILITY OF OTHERS TO VERIFY THIS VALUE.
- 7) WHERE REINFORCING BARS ARE SHOWN CONTINUOUS, LAP SPlice BARS 40 DIAMETERS
- 8) APPROACHES TO BE A COMMON PLANE WITHIN 1/4".

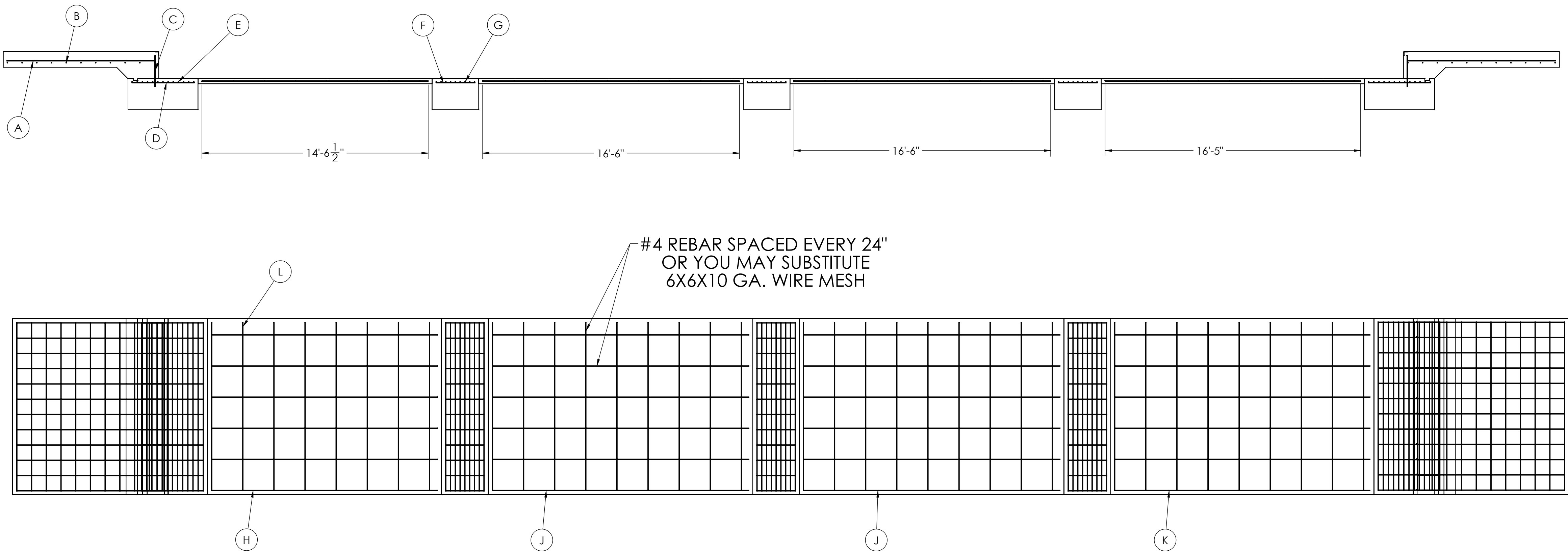
9 APPROACH THICKNESS MAY BE 10" MINIMUM WHERE ALLOWED BY STATE REGULATIONS

10 FOUNDATION MUST EXTEND A MINIMUM OF 12" BELOW THE FROST PENETRATION LINE

(ENGINEER'S) DATE S. JOHNSON 07/10/2017		(DRAWN BY) DATE S. JOHNSON 07/10/2017		(FIELD OPERATOR) DATE S. JOHNSON 07/10/2017			
(TREATMENT) NONE		THIS DRAWING AND INFORMATION CONTAINED HEREIN IS THE PROPERTY OF RICE LAKE WEIGHING SYSTEMS INC. HEREINAFTER REFERRED TO AS RLWS. IT MAY BE USED ONLY FOR THE PURPOSES AND FOR THE CUSTOMER IDENTIFIED. IT SHALL NOT BE DISCLOSED OR COPIED WITHOUT RLWS SPECIFIC WRITTEN CONSENT AND SHALL BE IMMEDIATELY RETURNED UPON REQUEST.		UNLESS OTHERWISE SPECIFIED UNITS TO BE INCHES ALL TOLERANCES TO BE CLASS 2 ALL DIMENSIONS APPLICABLE AFTER TREATMENT			
(NUMBER OF CRANES) 		TOLERANCES DO NOT SCALE DRAWING UNLESS OTHERWISE SPECIFIED .XX: ± .XXX: ± ✓ ANGLE: ±		(DESCRIPTION) FOUNDATION, CONCRETE PIER 80' X 11' OTR SERIES TRUCK SCALE			
(MINIMUM CRANE CAPACITY) 		(SCALE) 1:45		(SHEET) 1 OF 3		(MATERIAL)	
(ESTIMATED WEIGHT (POUNDS)) 		(THIRD ANGLE PROJECTION) 		(PIN)		184541	
						(REV) A	

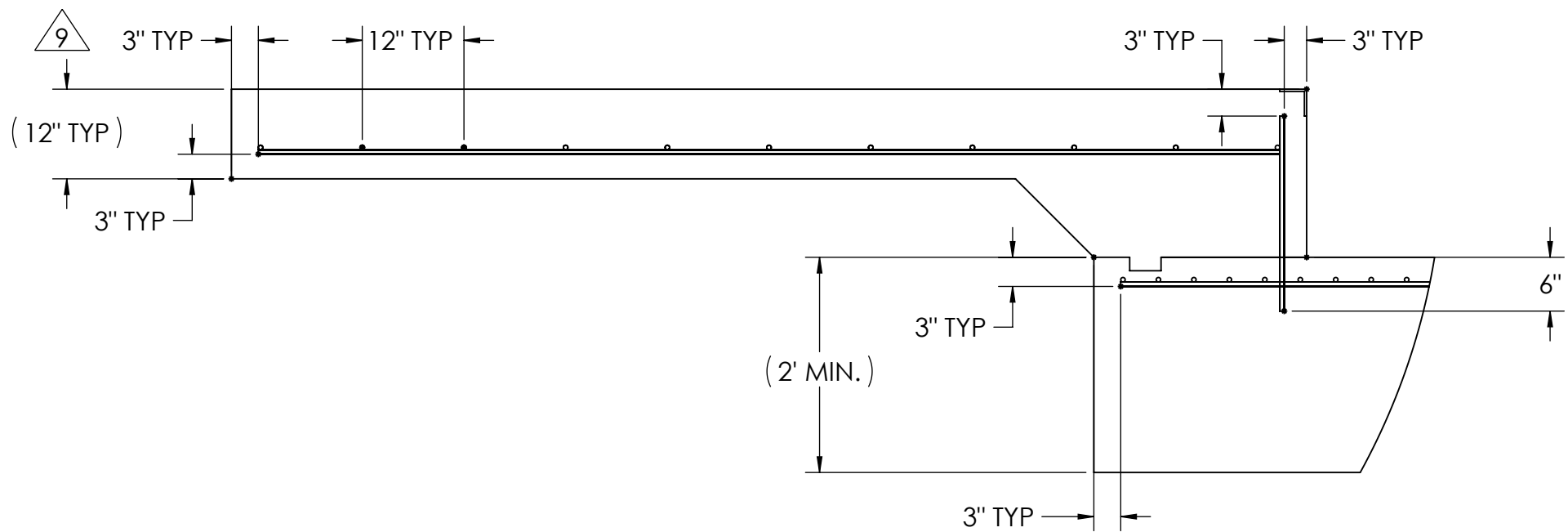
MATERIAL REQUIREMENTS				
REBAR SCHEDULE				
BAL. NO.	QUANTITY	LENGTH (FT-IN.)	DESCRIPTION	WEIGHT
A	24	9' 6"	# 4 @ 12 O.C.	152
B	22	10' 10"	# 4 @ 12 O.C.	159
C	24	1' 11 3/4"	# 4 @ 12 O.C.	32
D	24	4' 0"	# 4 @ 12 O.C.	64
E	22	10' 10"	# 4 @ 4 O.C.	159
F	39	2' 6"	# 4 @ 12 O.C.	65
G	27	10' 10"	# 4 @ 4 O.C.	195
CLEANOUT SCHEDULE				
H	6	14' 6 1/2"	# 4 @ 24 O.C.	58
J	12	16' 6"	# 4 @ 24 O.C.	132
K	6	16' 5"	# 4 @ 24 O.C.	66
L	35	10' 10"	# 4 @ 24 O.C.	253
TOTAL WEIGHT OF REBAR (LBS.)				1337
TOTAL LENGTH OF REBAR (FT.)				2001
WIRE MESH		6 X 6-10 GA.		747 SQ FT

REBAR LAYOUT

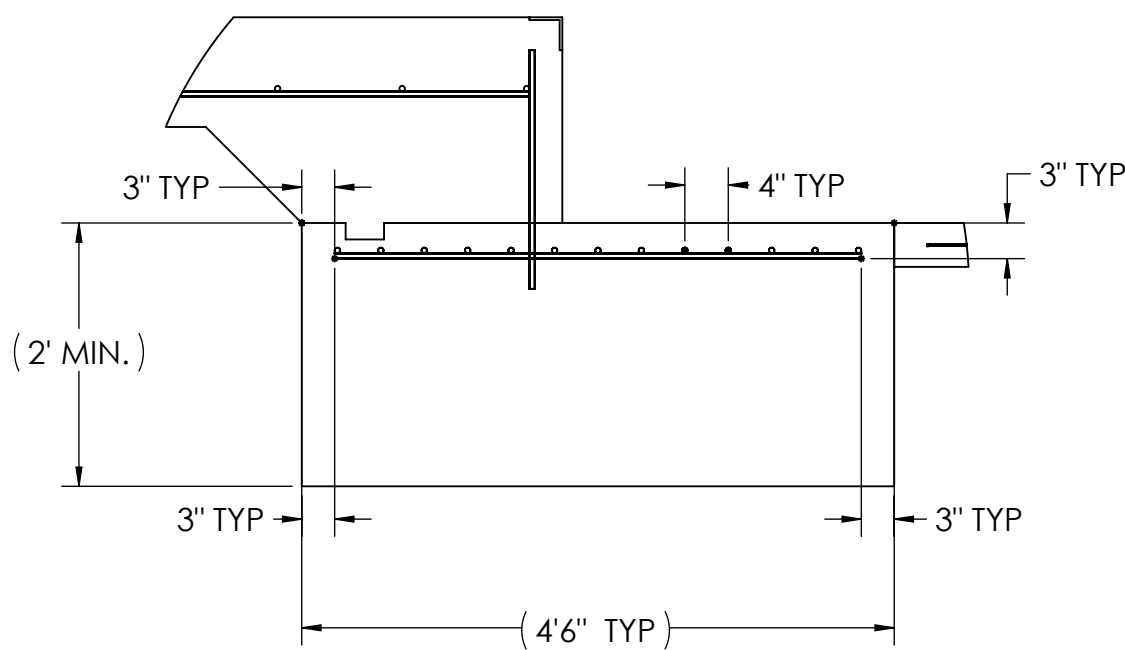


APPROACH STANDARD VIEWS

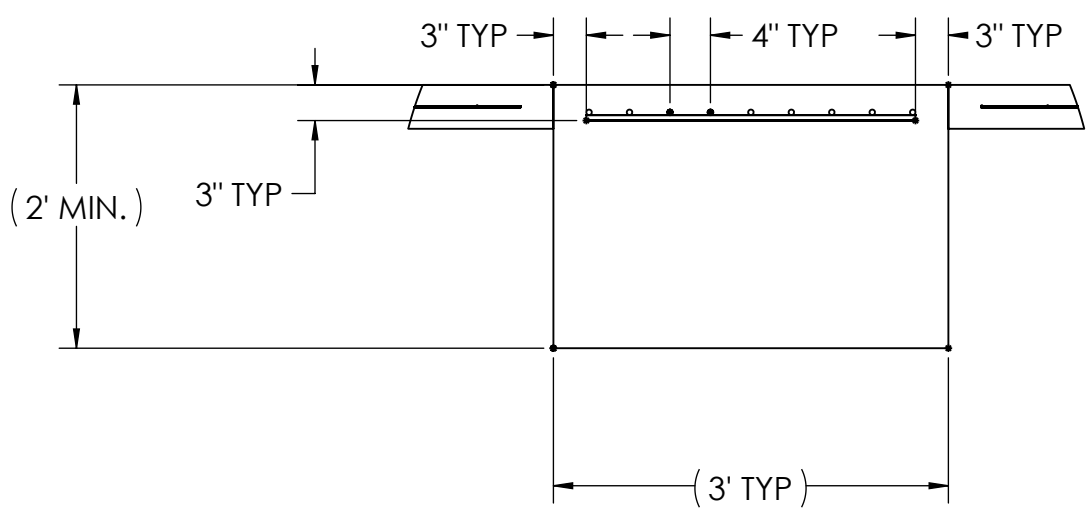
NOTES: 1) LEFT AND RIGHT APPROACHES ARE MIRROR IMAGES OF EACH OTHER AND CONTAIN AN IDENTICAL PART LIST






APPROACH PIER STANDARD VIEWS



PIER STANDARD VIEWS



DESIGNED BY DATE S. JOHNSON 07/10/2017		DRAWN BY DATE S. JOHNSON 07/10/2017		FIELD OPERATOR DATE S. JOHNSON 07/10/2017			
TREATMENT NONE		THIS DRAWING AND INFORMATION CONTAINED HEREIN IS AND REMAINS THE PROPERTY OF RICE LAKE WEIGHING SYSTEMS INC. HEREINAFTER REFERRED TO AS RLS. IT MAY BE USED FOR THE RLS' PROPOSAL AND/OR ITS CUSTOMER'S INFORMATION. IT SHALL NOT BE REPRODUCED OR COPIED WITHOUT RLS' SPECIFIC WRITTEN CONSENT AND SHALL BE IMMEDIATELY RETURNED UPON REQUEST.		UNLESS OTHERWISE SPECIFIED UNITS TO BE IN INCHES ALL THREADS TO BE CLASS 2 ALL DIMENSIONS APPLICABLE AFTER TREATMENT			
NUMBER OF CRANES MINIMUM CRANE CAPACITY (ESTIMATED WEIGHT POINTS)		 DO NOT SCALE DRAWING SURFACE FINISH ✓ ANGLE: ±		TOLERANCES DRAWING TOLERANCES UNLESS OTHERWISE SPECIFIED .XX; ± .XXX; ± ANGLE: ±		DESCRIPTION FOUNDATION, CONCRETE PIER 80" x 11" OTR SERIES TRUCK SCALE	
				SCALE 1:48		SHEET 3 OF 3	
				THIRD ANGLE PROJECTION 		MATERIAL 184541	
				P/N 184541		REV A	