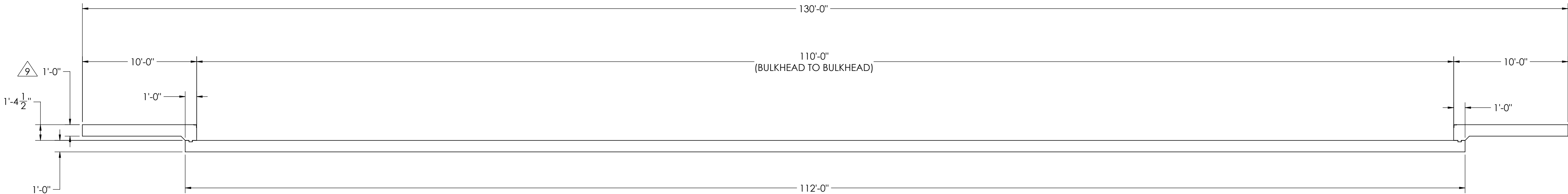
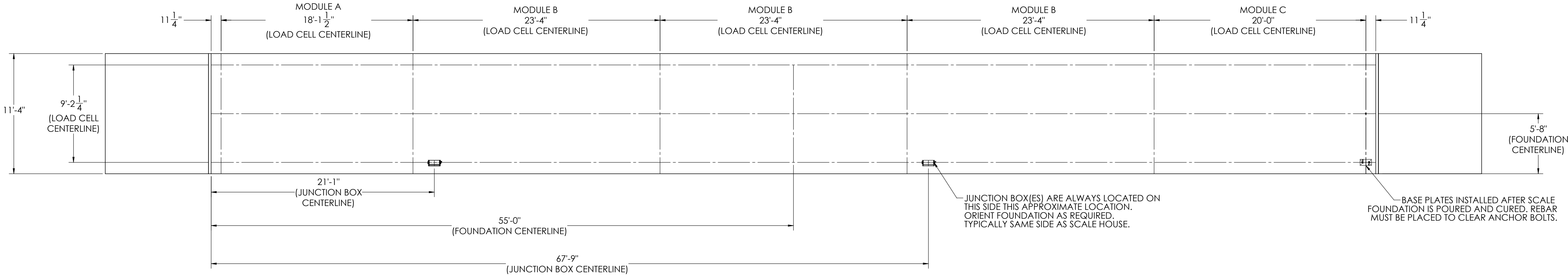


REVISION				
REV.	ECO	DESCRIPTION	INIT	DATE
A		ENGINEERING RELEASE	SPJ	08/28/2017

DETAILS





NOTES:

- 1) CONCRETE: f'c = 3000 PSI @ 28 DAYS.
- 2) REINFORCING STEEL: DEFORMED BARS ASTM A615 GRADE 60.
- 3) STATE AND LOCAL AGENCIES MAY HAVE VARIOUS REQUIREMENTS FOR APPROACH RAMP LENGTH, PITCH, AND FOR CLEAN OUT HEIGHT. PLEASE CHECK WITH ALL AGENCIES PRIOR TO CONSTRUCTION.
- 4) MONOLITHIC POUR OF SLAB AND APPROACHES IS ALLOWED, AT CONTRACTOR'S DISCRETION.
- 5) DEVELOP AND MAINTAIN SITE GRADES WHICH WILL RAPIDLY DRAIN SURFACE AND ROOF RUN-OFF AWAY FROM FOUNDATION.
- 6) FOOTINGS HAVE BEEN DESIGNED FOR A MINIMUM SOIL PRESSURE OF 1500 PSF, IT WILL BE THE RESPONSIBILITY OF OTHERS TO VERIFY THIS VALUE.
- 7) WHERE REINFORCING BARS ARE SHOWN CONTINUOUS, LAP SPLICE BARS 40 DIAMETERS.
- 8) APPROACHES TO BE A COMMON PLANE WITHIN 1/4".

9 APPROACH THICKNESS MAY BE 10" MINIMUM WHERE ALLOWED BY STATE REGULATIONS

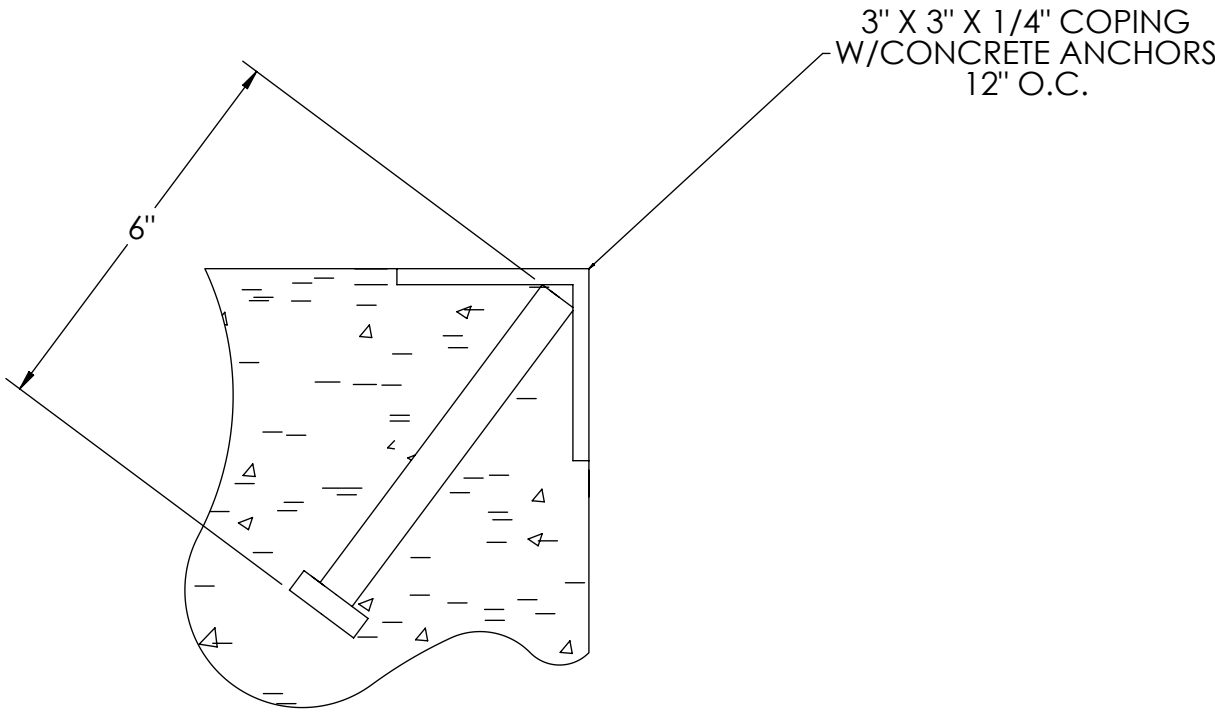
- 10) IF FROST CAN PENETRATE BELOW FOUNDATION, AT LEAST 12 INCHES OF WELL DRAINED, COMPACTED BASE MATERIAL MUST BE PROVIDED UNDER FOUNDATION

DESIGNED BY DATE S. JOHNSON 08/28/2017		DRAWN BY DATE S. JOHNSON 08/28/2017		FIELD APPROVAL DATE S. JOHNSON 08/28/2017		<div><div></div><div>RICE LAKE®</div><div>WEIGHING SYSTEMS</div></div>	
TREATMENT NONE		THIS DRAWING AND INFORMATION CONTAINED HEREIN IS AND REMAINS THE PROPERTY OF RICE LAKE WEIGHING SYSTEMS INC. HEREINAFTER REFERRED TO AS RLWS. IT MAY BE USED ONLY FOR RLWS' PROPOSAL AND/OR ITS CUSTOMER'S ORDERS. IT SHALL NOT BE DISCLOSED OR COPIED WITHOUT RLWS' SPECIFIC WRITTEN CONSENT AND SHALL BE IMMEDIATELY RETURNED UPON REQUEST.		UNLESS OTHERWISE SPECIFIED UNITS TO BE INCHES ALL THREADS TO BE CLASS 2 ALL DIMENSIONS APPLICABLE AFTER TREATMENT			
NUMBER OF CRANES: MINIMUM CRANE CAPACITY: ESTIMATED WEIGHT (POUNDS):		<div></div> <div>DO NOT SCALE DRAWING SURFACE FINISH ✓ ANGLE: ±</div>		TOLERANCES DRAWING TOLERANCES UNLESS OTHERWISE SPECIFIED XX: ± XXX: ± ANGLE: ±		DESCRIPTION FOUNDATION, CONCRETE SLAB 110' X 11' OTR SERIES TRUCK SCALE	
				SCALE 1:60		SHEET 1 OF 3	
				THIRD ANGLE PROJECTION <div></div>		MATERIAL 185683	
						REV A	

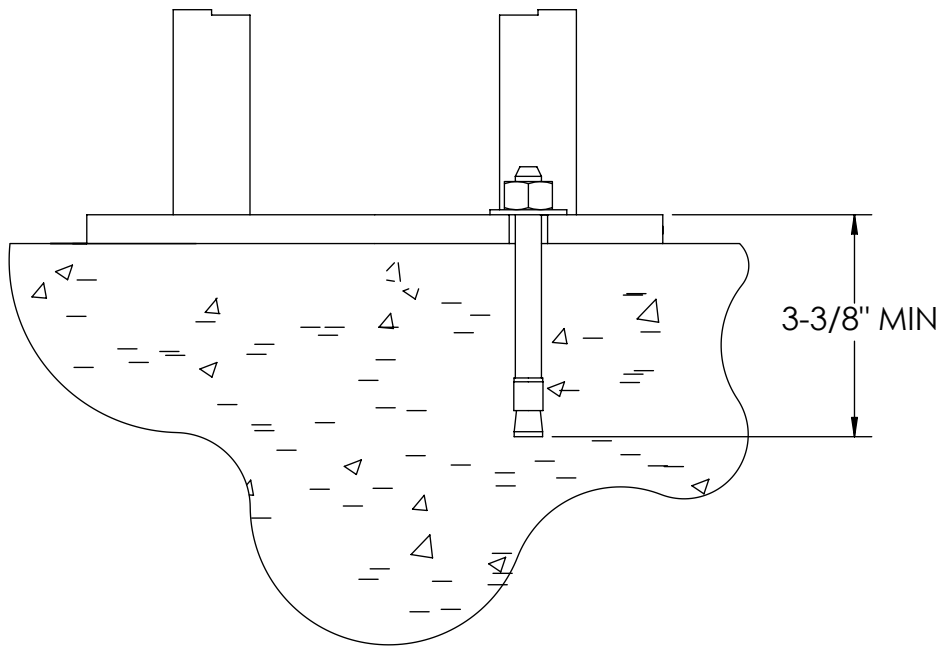
CONCRETE SCHEDULE			
		VOLUME (CUBIC YARDS)	
APPROACHES		8.8	
FLOOR		47.3	
TOTAL		56.2	
MISC. STEEL			
PIT COPING	3 X 3 X 1/4	23 LN .FT	113 LBS

REVISION				
REV	ECO	DESCRIPTION	INIT	DATE

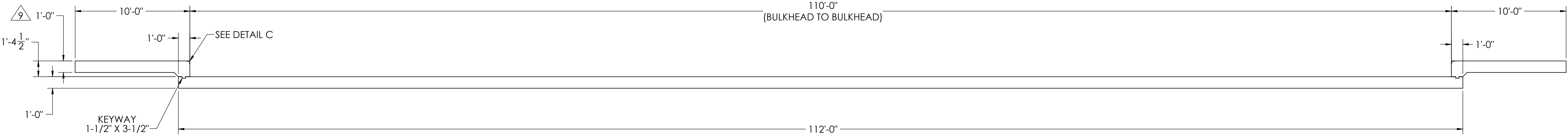
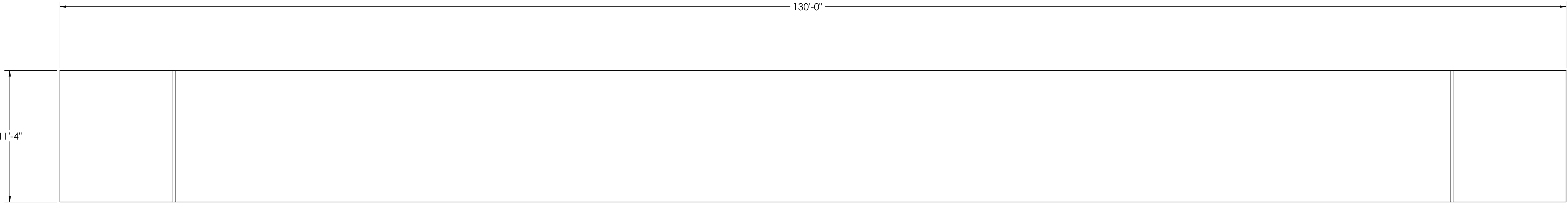
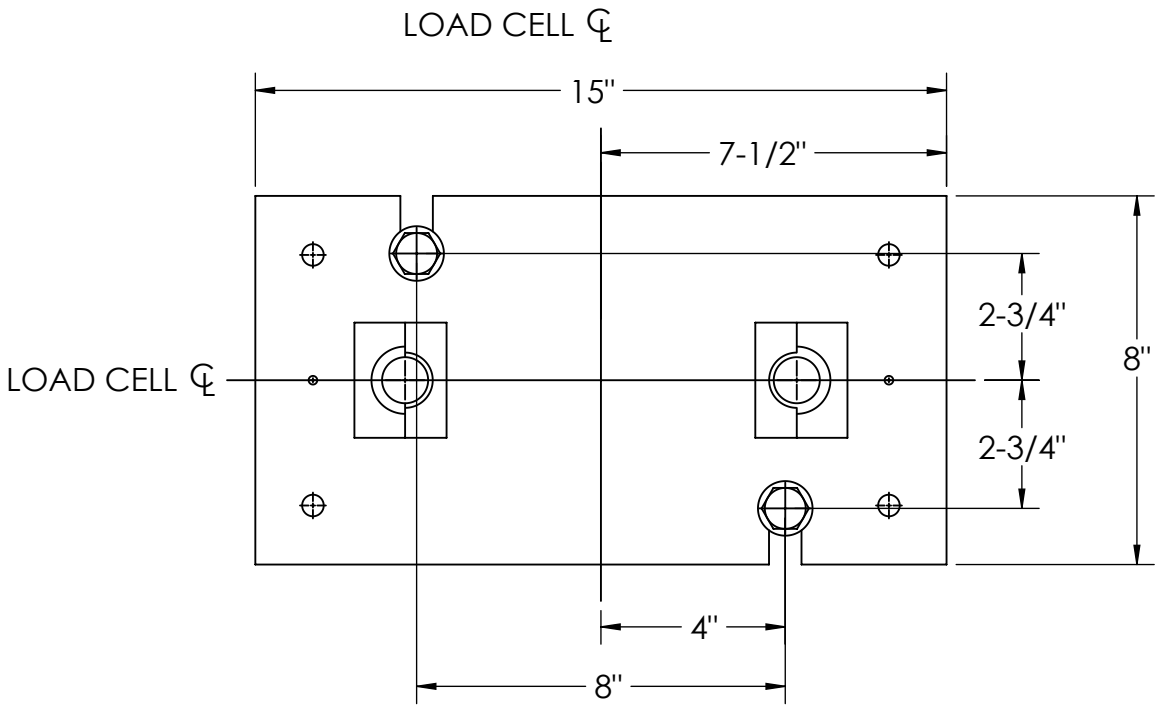
CONCRETE LAYOUT



DETAIL C



DETAIL D



DESIGNED BY: S. JOHNSON 08/28/2017	DRAWN BY: S. JOHNSON 08/28/2017	FIELD APPROVAL: S. JOHNSON 08/28/2017	RICE LAKE WEIGHING SYSTEMS	
TREATMENT: NONE	THIS DRAWING AND INFORMATION CONTAINED HEREIN IS AND REMAINS THE PROPERTY OF RICE LAKE WEIGHING SYSTEMS INC. - HEREINAFTER REFERRED TO AS RLWS. IT MAY BE USED ONLY FOR RLWS' PROPOSAL AND/OR ITS CUSTOMER'S ORDERS. IT SHALL NOT BE DISCLOSED OR COPIED WITHOUT RLWS' SPECIFIC WRITTEN CONSENT AND SHALL BE IMMEDIATELY RETURNED UPON REQUEST.	UNLESS OTHERWISE SPECIFIED UNITS TO BE INCHES ALL THREADS TO BE CLASS 2 ALL DIMENSIONS APPLICABLE AFTER TREATMENT	DESCRIPTION: FOUNDATION, CONCRETE SLAB 110' X 11' OTR SERIES TRUCK SCALE	
NUMBER OF CRANES: 1	DO NOT SCALE DRAWING SURFACE FINISH	TOLERANCES UNLESS OTHERWISE SPECIFIED .XX: ± .XXX: ± ANGLE: ±	SCALE: 1:60	SHEET: 2 OF 3
ESTIMATED WEIGHT (POUNDS):		THIRD ANGLE PROJECTION	185683	REV: A

