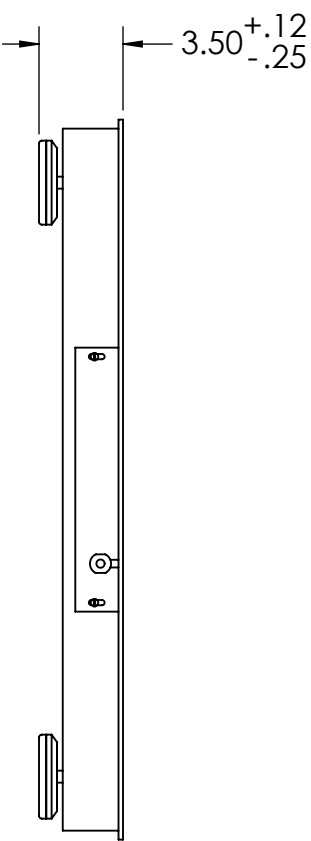
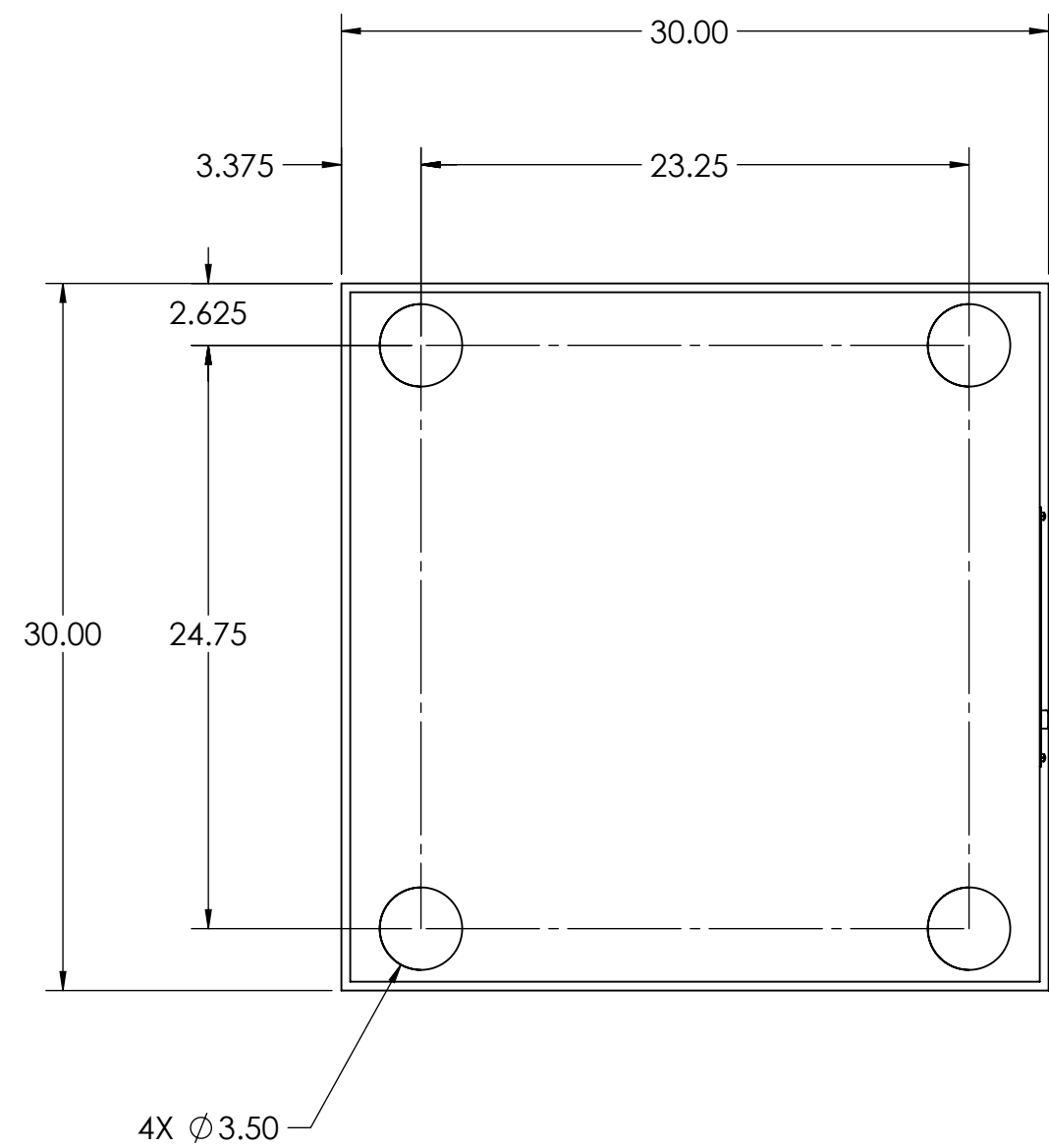


REVISION				
REV	ECO	DESCRIPTION	INIT	DATE
A	-	ENGINEERING RELEASE	PB	08/19/2019



DESIGNED BY / DATE P.BOWE 08/15/2019		DRAWN BY / DATE P.BOWE 08/15/2019		PEER APPROVAL/ DATE P.BOWE 08/19/2019		<div></div>	
TREATMENT		THIS DRAWING AND INFORMATION CONTAINED HEREIN, IS AND REMAINS THE PROPERTY OF RICE LAKE WEIGHING SYSTEMS INC., HEREINAFTER REFERRED TO AS RLWS. IT MAY BE USED ONLY FOR RLWS' PROPOSAL AND/OR ITS CUSTOMERS' ORDERS. IT SHALL NOT BE DISCLOSED OR COPIED WITHOUT RLWS SPECIFIC WRITTEN CONSENT AND SHALL BE IMMEDIATELY RETURNED UPON REQUEST.		UNLESS OTHERWISE SPECIFIED UNITS TO BE INCHES ALL THREADS TO BE CLASS 2 ALL DIMENSIONS APPLICABLE AFTER TREATMENT			
NUMBER OF CRANES:		<div></div> <div>TOLERANCES DRAWING TOLERANCES UNLESS OTHERWISE SPECIFIED SURFACE FINISH ✓ ANGLE: ±---°</div>		DESCRIPTION ROUGHDECK HPSS 2.5FTX2.5FT-2,000LB STAINLESS STEEL			
MINIMUM CRANE CAPACITY:							
ESTIMATED WEIGHT (POUNDS)				SCALE 1:8		SHEET 1 OF 1	
		<div></div>		P/N 18663		REV A	