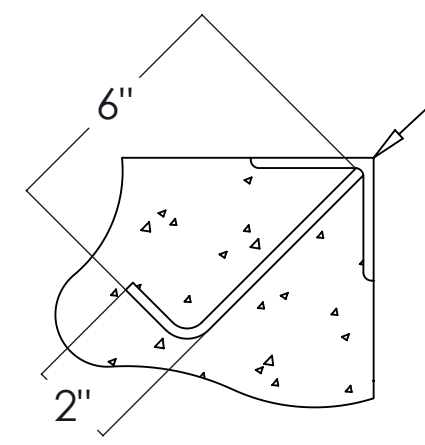
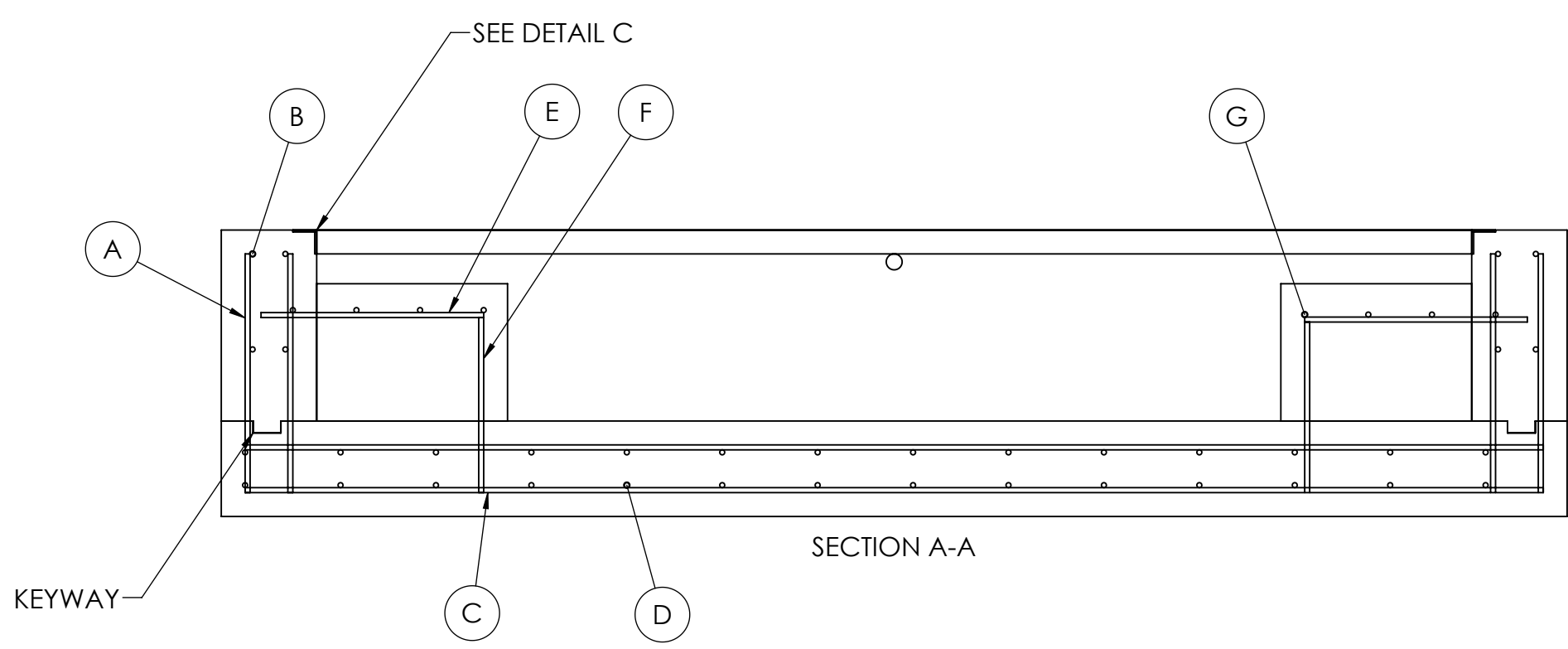
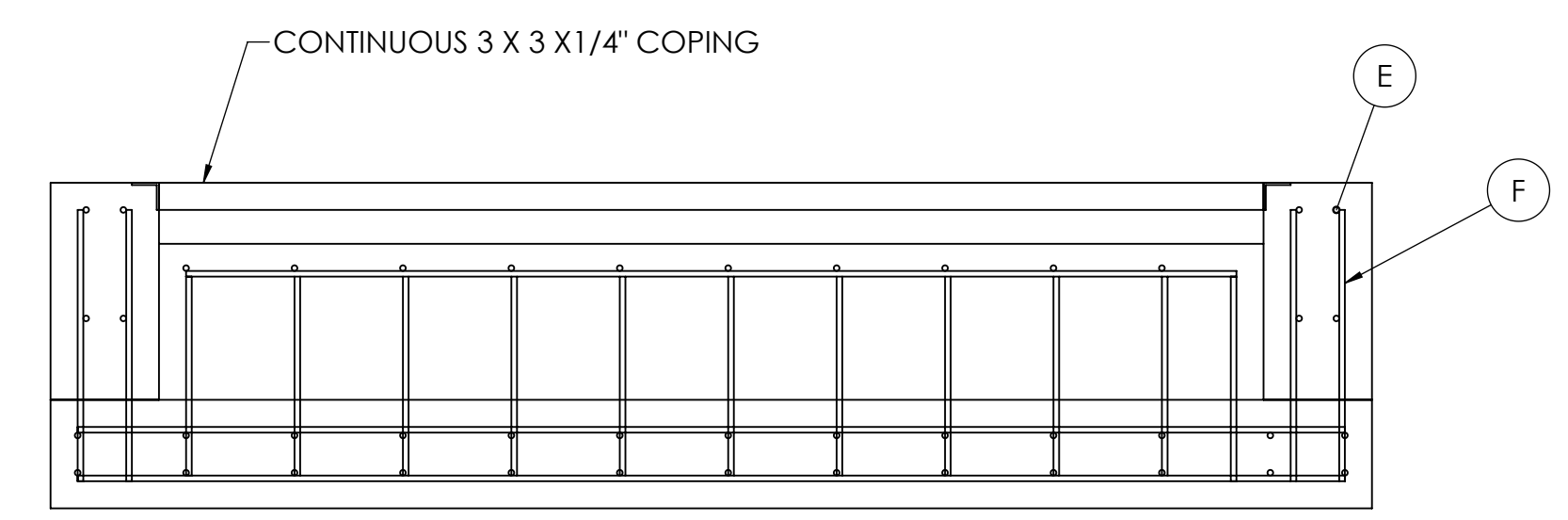
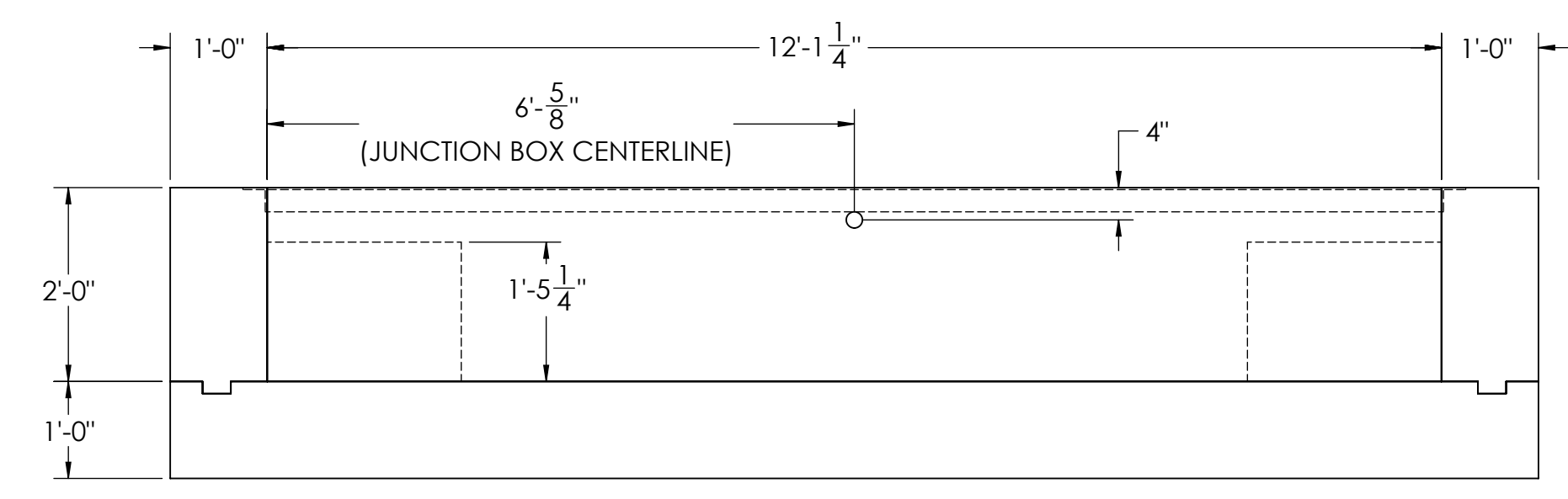
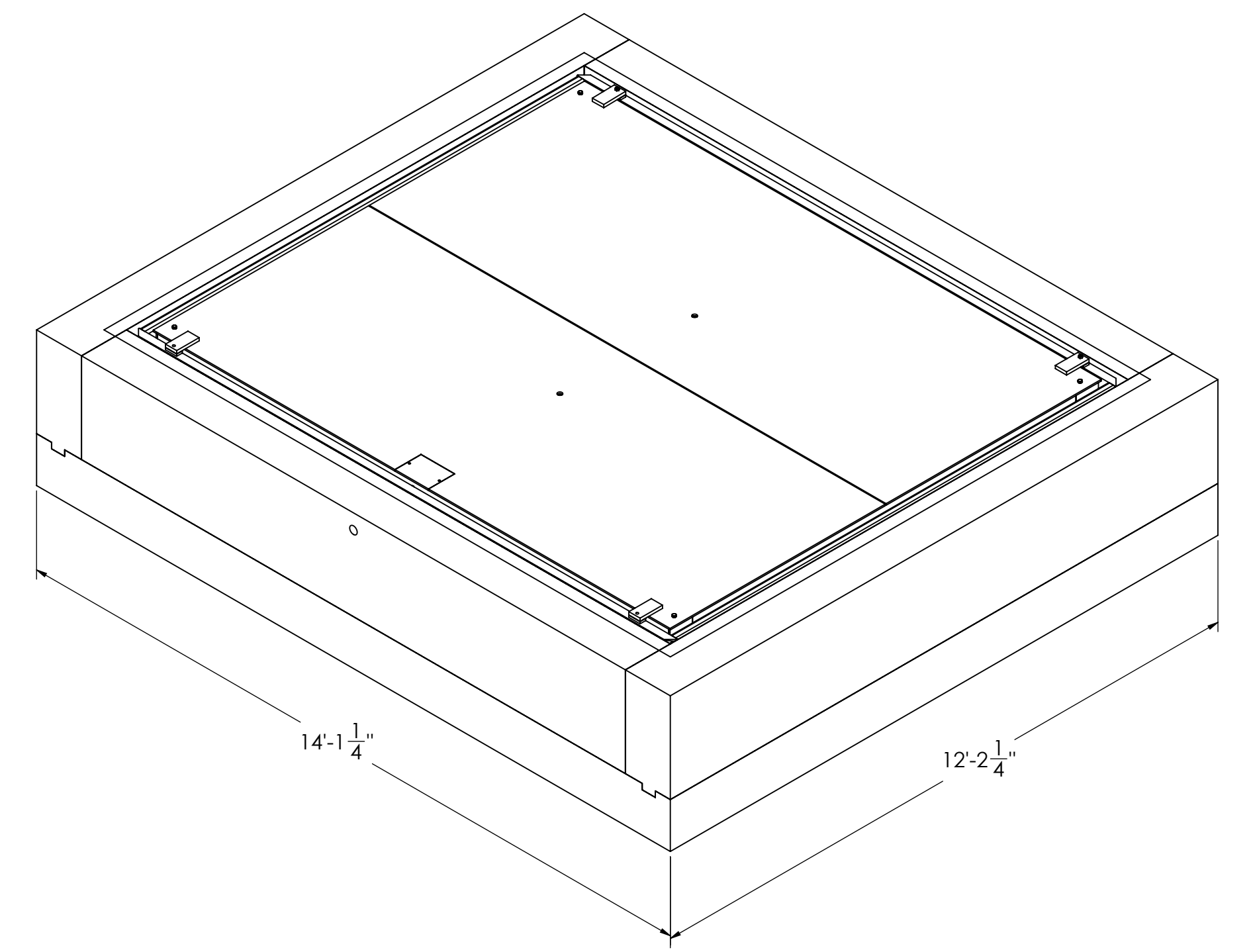
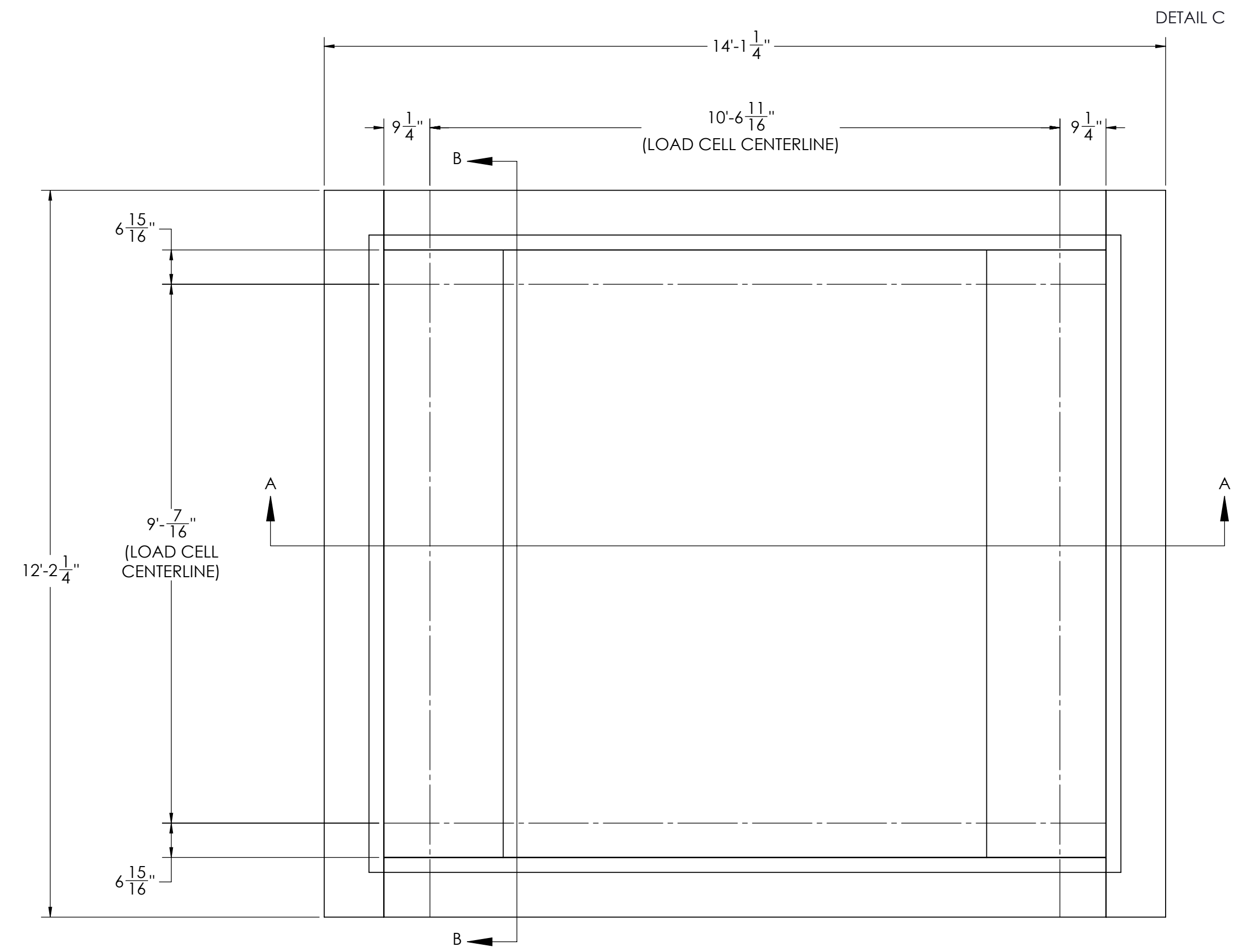


REV	ECO	REVISION DESCRIPTION	INIT	DATE
A		ENGINEERING RELEASE	SPJ	01/22/2018

MATERIAL REQUIREMENTS				
REBAR SCHEDULE				
BAL. NO.	QUANTITY	LENGTH (IN.)	DESCRIPTION	WEIGHT
A	48	30	# 5 @ 12 O.C.	125
B	8	140	# 5 @ 12 O.C.	97
C	26	163	# 5 @ 12 O.C.	368
D	28	140	# 5 @ 12 O.C.	341
E	20	32	# 5 @ 12 O.C.	56
F	20	22	# 5 @ 12 O.C.	38
G	8	140	# 5 @ 8 O.C.	97
TOTAL WEIGHT OF REBAR (LBS.)				1123
TOTAL LENGTH OF REBAR (FT.)				1077
CONCRETE SCHEDULE				
				VOLUME (CUBIC YARDS)
FLOOR				6.3
PIERS				2.2
WALLS				3.6
TOTAL				12.1
MISC. STEEL				
PIT COPING	3 X 3 X 1/4	46 LN. FT	223 LBS	



3 X 3 X 1/4 X 12'-0"  
ANCHOR F.B. 2" X 1/4" WELDED  
TO ANGLE @ 18" C.C.  
NOTE:  
ANCHOR BARS MAY BE SUBSTITUTED BY  
"NELSON" TYPE C-4 ANCHOR STUDS,  
Ø 1/2 X 6" LONG, OR APPROVED EQUIV.  
(APPROACH COPING NOT INCLUDED)



- NOTES:
- 1) CONCRETE:  $f_c = 3500$  PSI @ 28 DAYS.
  - 2) REINFORCING STEEL: DEFORMED BARS ASTM A615 GRADE 60.
  - 3) STATE AND LOCAL AGENCIES MAY HAVE VARIOUS REQUIREMENTS FOR APPROACH RAMP LENGTH, PITCH, AND FOR CLEAN OUT HEIGHT. PLEASE CHECK WITH ALL AGENCIES PRIOR TO CONSTRUCTION.
  - 4) MONOLITHIC POUR OF SLAB AND PIERS IS ALLOWED AT CONTRACTOR'S DISCRETION.
  - 5) DEVELOP AND MAINTAIN SITE GRADES WHICH WILL RAPIDLY DRAIN SURFACE AND ROOF RUN-OFF AWAY FROM FOUNDATION.
  - 6) FOOTINGS HAVE BEEN DESIGNED FOR A MINIMUM SOIL PRESSURE OF 3000 PSF, IT WILL BE THE RESPONSIBILITY OF OTHERS TO VERIFY THIS VALUE.
  - 7) WHERE REINFORCING BARS ARE SHOWN CONTINUOUS, LAP SPLICE BARS 40 DIAMETERS.
  - 8) APPROACHES TO BE A COMMON PLANE WITHIN 1/4".
  - 9) IF FROST CAN PENETRATE BELOW FOUNDATION, AT LEAST 18 INCHES OF WELL DRAINED, COMPACTED BASE MATERIAL MUST BE PROVIDED UNDER FOUNDATION

DESIGNED BY/DATE S. JOHNSON 03/28/2017	DESIGNED BY/DATE S. JOHNSON 01/22/2018	FREE APPROVAL/DATE S. JOHNSON 01/23/2018	
<small>THIS DRAWING AND INFORMATION CONTAINED HEREIN IS AND REMAINS THE PROPERTY OF RICE LAKE WEIGHING SYSTEMS INC. - HEREINAFTER REFERRED TO AS RLWS. IT MAY BE USED ONLY FOR RLWS' PROPOSAL AND/OR ITS CUSTOMER'S ORDERS. IT SHALL NOT BE DISCLOSED OR COPIED WITHOUT RLWS' SPECIFIC WRITTEN CONSENT AND SHALL BE IMMEDIATELY RETURNED UPON REQUEST.</small>			
TREATMENT NONE	<small>UNLESS OTHERWISE SPECIFIED UNITS TO BE INCHES ALL THREADS TO BE CLASS 2 ALL DIMENSIONS APPLICABLE AFTER TREATMENT</small>		<b>FOUNDATION, CONCRETE PIT ROUGHDECK</b> 169648 AX-1 SERIES SCALE
NUMBER OF CRANES MINIMUM CRANE CAPACITY ESTIMATED WEIGHT (POUNDS)	<small>DO NOT SCALE DRAWING SURFACE FINISH</small> TOLERANCES <small>DRAWING TOLERANCES UNLESS OTHERWISE SPECIFIED</small> .XX: .XXX: ANGLE:	SCALE: 1:20 SHEET: 1 OF 1 THIRD ANGLE PROJECTION	