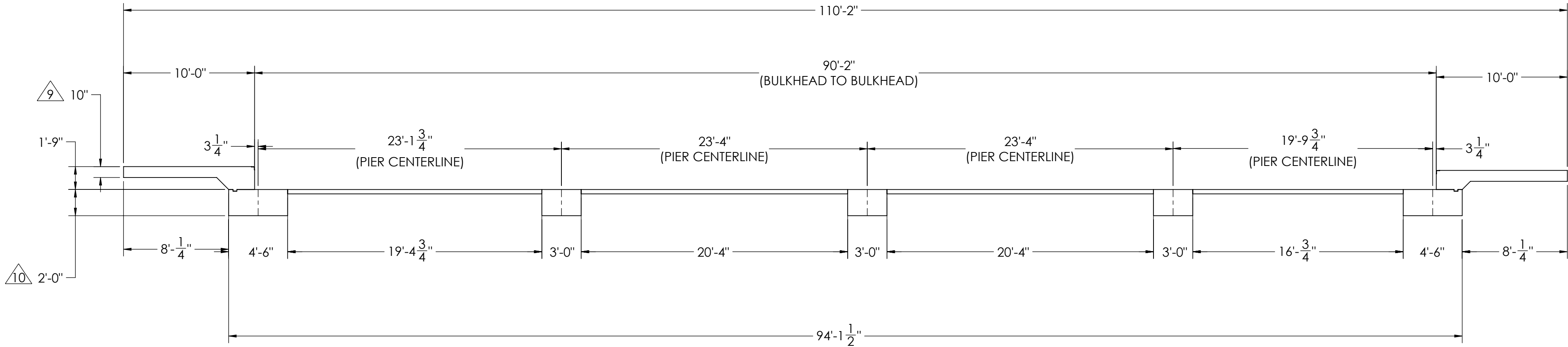
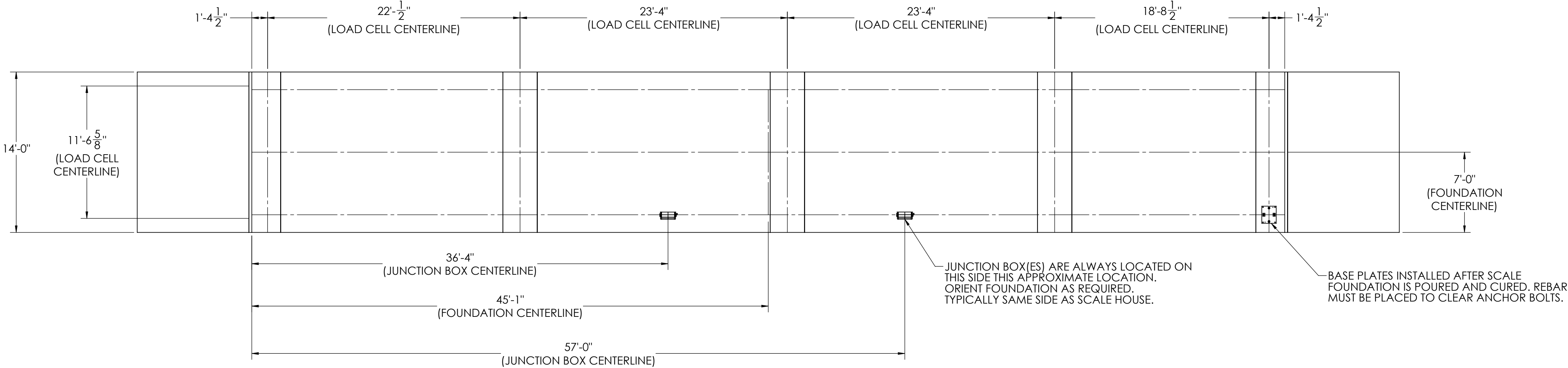


DETAILS

		REVISION		
REV.	ECO	DESCRIPTION	INIT	DATE
A3		ENGINEERING RELEASE	SPJ	04/20/2018
B		REVISED LOAD CELL CENTERLINE	SPJ	07/12/2018



NOTES:

- 1) CONCRETE: f'c = 3000 PSI @ 28 DAYS.
- 2) REINFORCING STEEL: DEFORMED BARS ASTM A615 GRADE 60.
- 3) STATE AND LOCAL AGENCIES MAY HAVE VARIOUS REQUIREMENTS FOR APPROACH RAMP LENGTH, PITCH, AND FOR CLEAN OUT HEIGHT. PLEASE CHECK WITH ALL AGENCIES PRIOR TO CONSTRUCTION.
- 4) MONOLITHIC POUR IS ALLOWED AT CONTRACTOR'S DISCRETION.
- 5) DEVELOP AND MAINTAIN SITE GRADES WHICH WILL RAPIDLY DRAIN SURFACE AND ROOF RUN-OFF AWAY FROM FOUNDATION.
- 6) FOOTINGS HAVE BEEN DESIGNED FOR A MINIMUM SOIL PRESSURE OF 2500 PSF, IT WILL BE THE RESPONSIBILITY OF OTHERS TO VERIFY THIS VALUE.
- 7) WHERE REINFORCING BARS ARE SHOWN CONTINUOUS, LAP SPICE BARS 40 DIAMETERS.
- 8) APPROACHES TO BE A COMMON PLANE WITHIN 1/4".

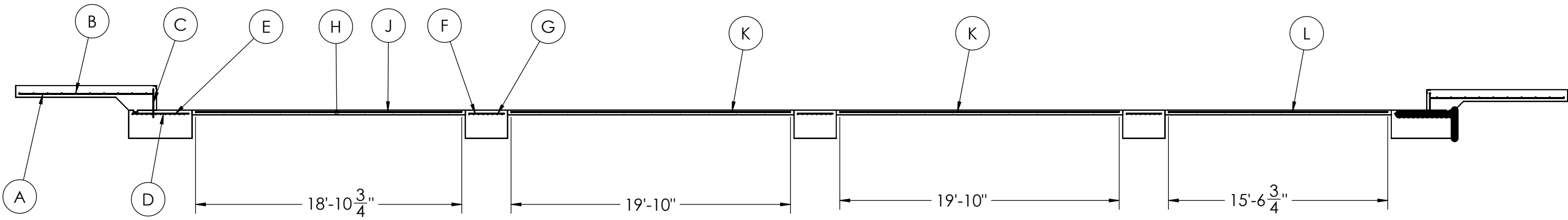
- △ APPROACH THICKNESS MAY BE 10" MINIMUM WHERE ALLOWED BY STATE REGULATIONS
- △ FOUNDATION MUST EXTEND A MINIMUM OF 12" BELOW THE FROST PENETRATION LINE

DESIGNED BY: J. JOHNSON S. JOHNSON 04/20/2018	DRAWN BY: J. JOHNSON S. JOHNSON 04/20/2018	PIER APPROVAL DATE: S. JOHNSON 07/12/2018	<b>RICE LAKE</b> WEIGHING SYSTEMS	
TREATMENT NONE	THIS DRAWING AND INFORMATION CONTAINED HEREIN IS AND REMAINS THE PROPERTY OF RICE LAKE WEIGHING SYSTEMS INC. - HEREINAFTER REFERRED TO AS RLWS. IT MAY BE USED ONLY FOR RLWS' PROPOSAL AND/OR ITS CUSTOMER'S ORDERS. IT SHALL NOT BE DISCLOSED OR COPIED WITHOUT RLWS' SPECIFIC WRITTEN CONSENT AND SHALL BE IMMEDIATELY RETURNED UPON REQUEST.		UNLESS OTHERWISE SPECIFIED UNITS TO BE INCHES ALL THREADS TO BE CLASS 2 ALL DIMENSIONS APPLICABLE AFTER TREATMENT	
NUMBER OF CRANES: MINIMUM CRANE CAPACITY: ESTIMATED WEIGHT (POUNDS):	DO NOT SCALE DRAWING SURFACE FINISH TOLERANCES UNLESS OTHERWISE SPECIFIED XX: ± XXX: ± ANGLE: ±	SCALE: 1:70 SHEET: 1 OF 3 THIRD ANGLE PROJECTION	FOUNDATION, CONCRETE PIER 90X11 SR SERIES, 21IN PROFILE, OPTIMIZED	
			190226	REV: B

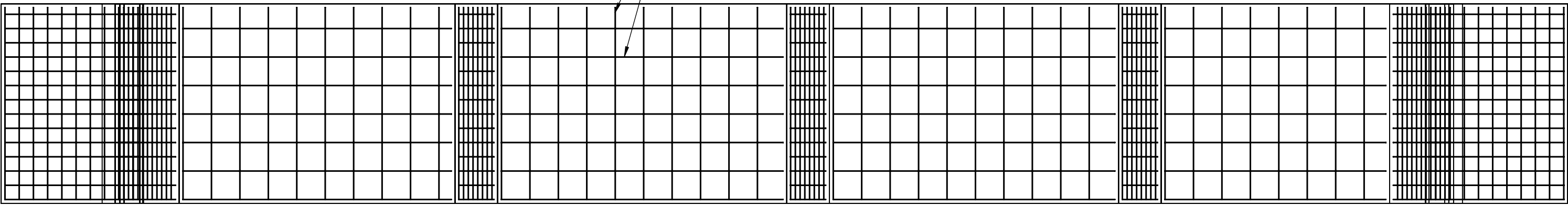


MATERIAL REQUIRMENTS				
REBAR SCHEDULE				
BAL. NO.	QUANTITY	LENGTH (FT-IN.)	DESCRIPTION	WEIGHT
A	28	9' 6"	# 4 @ 12 O.C.	178
B	22	14' 6"	# 4 @ 12 O.C.	213
C	28	2' 0"	# 4 @ 12 O.C.	37
D	28	4' 0"	# 4 @ 12 O.C.	75
E	24	14' 6"	# 4 @ 4 O.C.	232
F	24	2' 6"	# 4 @ 12 O.C.	40
G	42	14' 6"	# 4 @ 4 O.C.	407
CLEANOUT SCHEDULE				
H	38	14' 6"	# 4 @ 24 O.C.	368
J	7	18' 10 3/4"	# 4 @ 24 O.C.	88
K	14	19' 10"	# 4 @ 24 O.C.	185
L	7	15' 6 3/4"	# 4 @ 24 O.C.	73
TOTAL WEIGHT OF REBAR (LBS.)				1897
TOTAL LENGTH OF REBAR (FT.)				2840

# REBAR LAYOUT

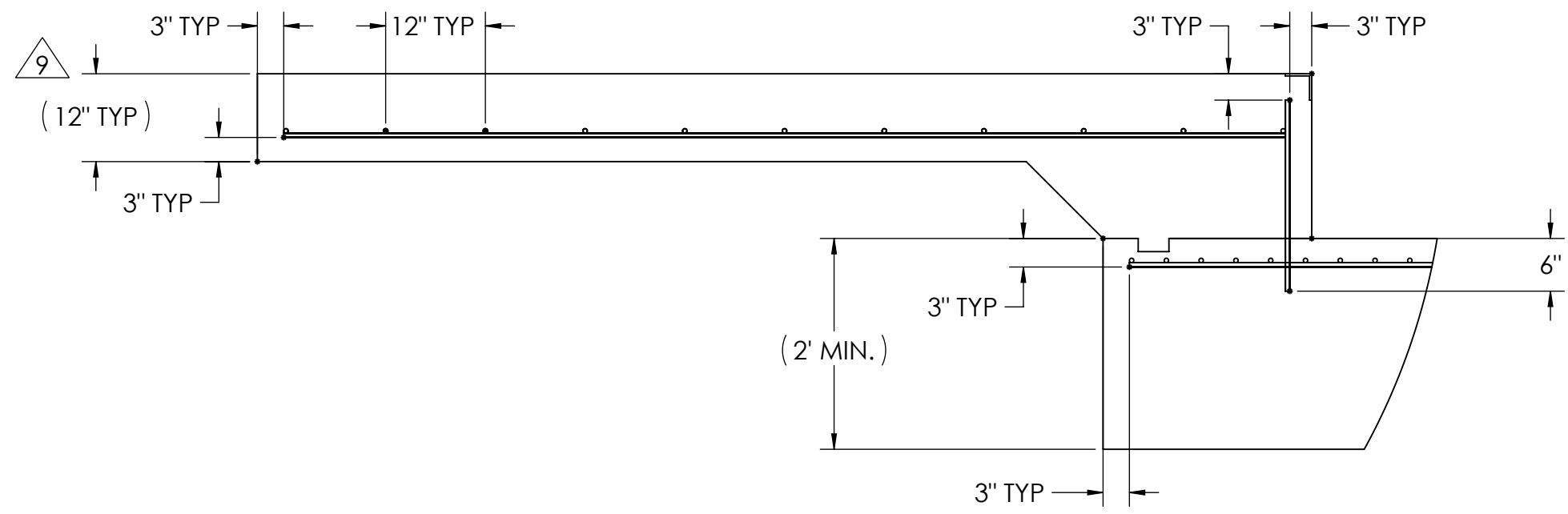


#4 REBAR SPACED EVERY 24"  
OR YOU MAY SUBSTITUTE  
6X6X10 GA. WIRE MESH

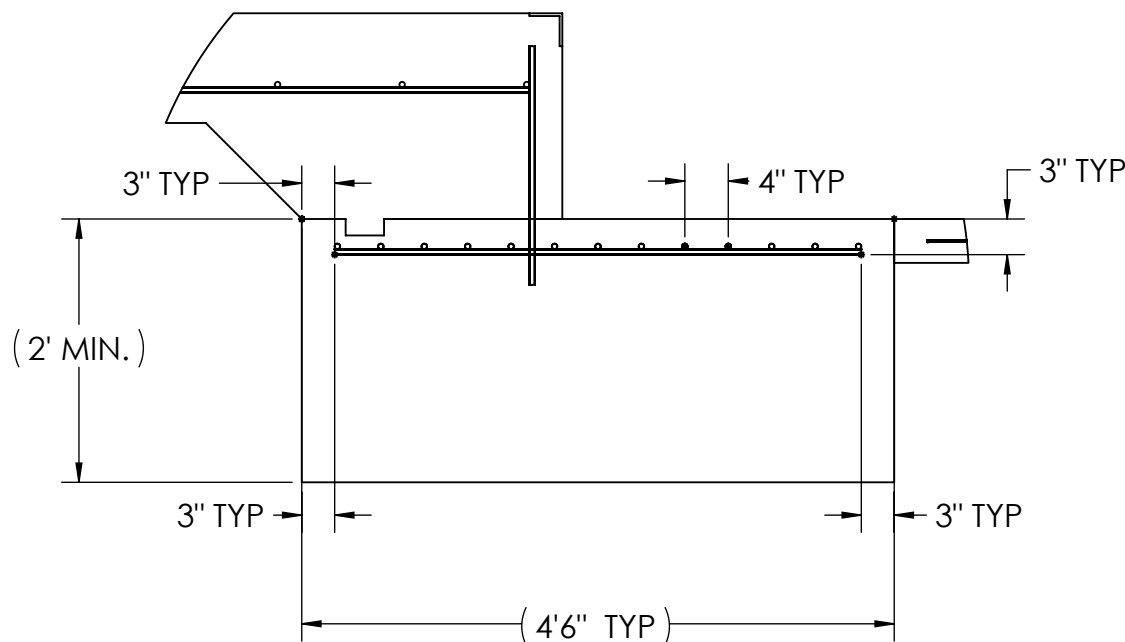


## APPROACH STANDARD VIEWS

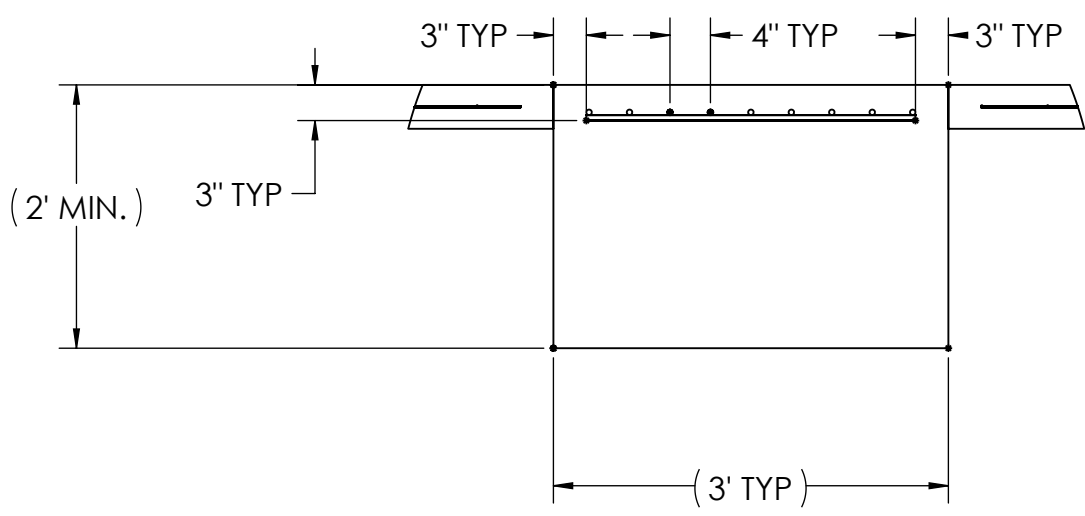
**NOTES:** 1) LEFT AND RIGHT APPROACHES ARE MIRROR IMAGES OF EACH OTHER AND CONTAIN AN IDENTICAL PART LIST



## APPROACH PIER STANDARD VIEWS



## PIER STANDARD VIEWS



DESIGNED BY: J.OHNSON S.JOHNSON 04/20/2018	DRAWN BY: J.OHNSON S.JOHNSON 04/20/2018	PIER APPROVAL: J.OHNSON S.JOHNSON 07/12/2018	<b>RICE LAKE</b> WEIGHING SYSTEMS	
TREATMENT  NONE	THIS DRAWING AND INFORMATION CONTAINED HEREIN IS AND REMAINS THE PROPERTY OF RICE LAKE WEIGHING SYSTEMS INC. - HEREINAFTER REFERRED TO AS RLWS. IT MAY BE USED ONLY FOR RLWS' PROPOSAL AND/OR ITS CUSTOMER'S ORDERS. IT SHALL NOT BE DISCLOSED OR COPIED WITHOUT RLWS' SPECIFIC WRITTEN CONSENT AND SHALL BE IMMEDIATELY RETURNED UPON REQUEST.		UNLESS OTHERWISE SPECIFIED UNITS TO BE INCHES ALL THREADS TO BE CLASS 2 ALL DIMENSIONS APPLICABLE AFTER TREATMENT	
NUMBER OF CRANES: MINIMUM CRANE CAPACITY: ESTIMATED WEIGHT (POUNDS):	DO NOT SCALE DRAWING SURFACE FINISH ✓	TOLERANCES DRAWING TOLERANCES UNLESS OTHERWISE SPECIFIED .XX: ± .XXX: ± ANGLE: ±	SCALE 1:48	SHEET 3 OF 3
FOUNDATION, CONCRETE PIER 90X11 SR SERIES, 21IN PROFILE, OPTIMIZED			THIRD ANGLE PROJECTION TYP	REV B
190226				