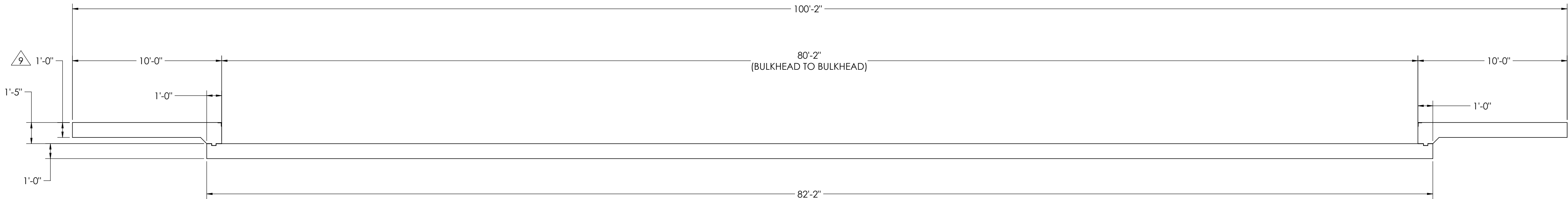
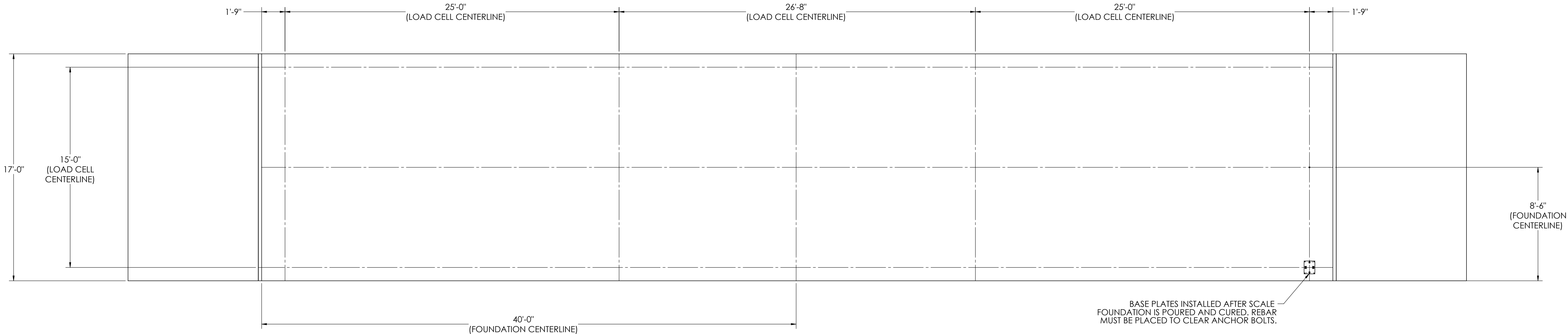


REVISION				
REV.	ECO	DESCRIPTION	INIT	DATE
A		ENGINEERING RELEASE	SPJ	06/05/2018

DETAILS


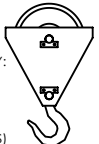
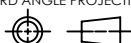


NOTES:

- 1) CONCRETE: $f_c = 3000$ PSI @ 28 DAYS.
- 2) REINFORCING STEEL: DEFORMED BARS ASTM A615 GRADE 60.
- 3) STATE AND LOCAL AGENCIES MAY HAVE VARIOUS REQUIREMENTS FOR APPROACH RAMP LENGTH, PITCH, AND FOR CLEAN OUT HEIGHT. PLEASE CHECK WITH ALL AGENCIES PRIOR TO CONSTRUCTION.
- 4) MONOLITHIC POUR OF SLAB AND APPROACHES IS ALLOWED, AT CONTRACTOR'S DISCRETION.
- 5) DEVELOP AND MAINTAIN SITE GRADES WHICH WILL RAPIDLY DRAIN SURFACE AND ROOF RUN-OFF AWAY FROM FOUNDATION.
- 6) FOOTINGS HAVE BEEN DESIGNED FOR A MINIMUM SOIL PRESSURE OF 1500 PSF, IT WILL BE THE RESPONSIBILITY OF OTHERS TO VERIFY THIS VALUE.
- 7) WHERE REINFORCING BARS ARE SHOWN CONTINUOUS, LAP SPLICE BARS 40 DIAMETERS.
- 8) APPROACHES TO BE A COMMON PLANE WITHIN 1/4".

 APPROACH THICKNESS MAY BE 10" MINIMUM WHERE ALLOWED BY STATE REGULATIONS

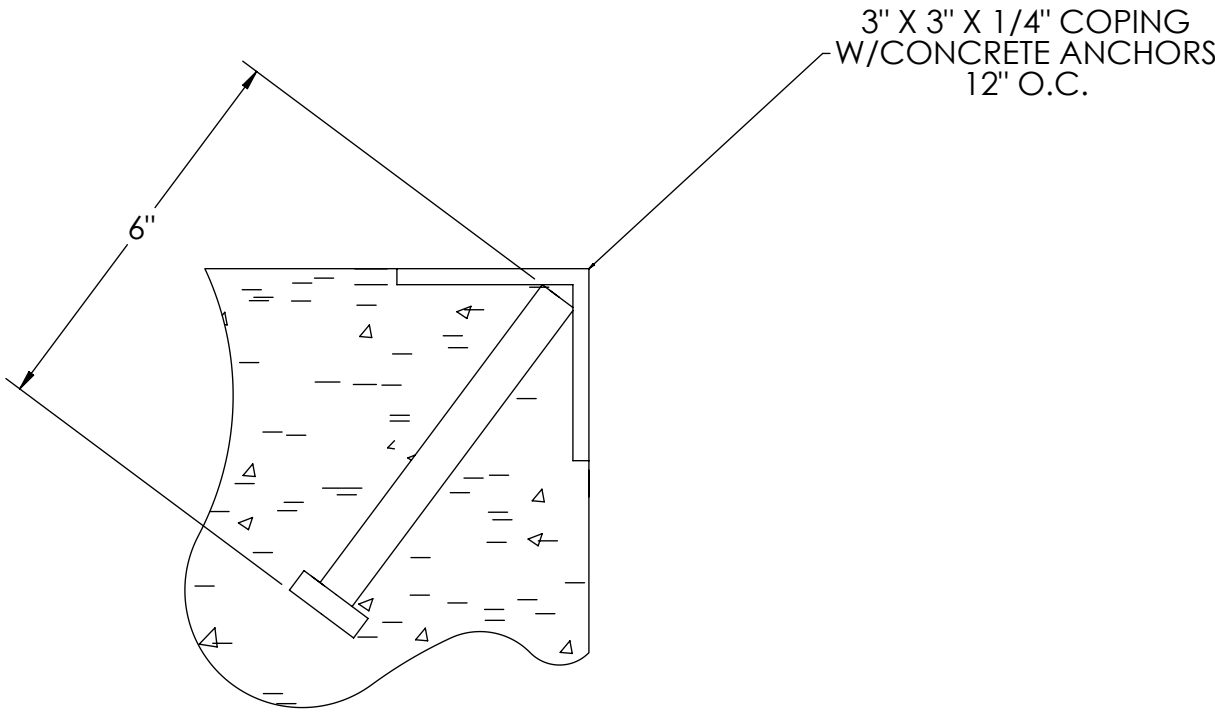
- 10) IF FROST CAN PENETRATE BELOW FOUNDATION, AT LEAST 12 INCHES OF WELL DRAINED, COMPACTED BASE MATERIAL MUST BE PROVIDED UNDER FOUNDATION

DESIGNED BY / DATE S. JOHNSON 06/05/2018	DRAWN BY / DATE S. JOHNSON 06/05/2018	FIELD APPROVAL / DATE S. JOHNSON 06/05/2018		
TREATMENT NONE	THIS DRAWING AND INFORMATION CONTAINED HEREIN IS AND REMAINS THE PROPERTY OF RICE LAKE WEIGHING SYSTEMS INC. - HEREINAFTER REFERRED TO AS RLWS. IT MAY BE USED ONLY FOR RLWS' PROPOSAL AND/OR ITS CUSTOMER'S ORDERS. IT SHALL NOT BE DISCLOSED OR COPIED WITHOUT RLWS' SPECIFIC WRITTEN CONSENT AND SHALL BE IMMEDIATELY RETURNED UPON REQUEST.	UNLESS OTHERWISE SPECIFIED UNITS TO BE INCHES ALL THREADS TO BE CLASS 2 ALL DIMENSIONS APPLICABLE AFTER TREATMENT	DESCRIPTION FOUNDATION, CONCRETE SLAB 80' X 14' OTR SERIES TRUCK SCALE	
NUMBER OF CRANES: 	DO NOT SCALE DRAWING SURFACE FINISH ✓	TOLERANCES DRAWING TOLERANCES UNLESS OTHERWISE SPECIFIED .XX: ± .XXX: ± ANGLE: ±	SCALE 1:45	SHEET 1 OF 3
ESTIMATED WEIGHT (POUNDS)		THIRD ANGLE PROJECTION 	190855	REV. A1

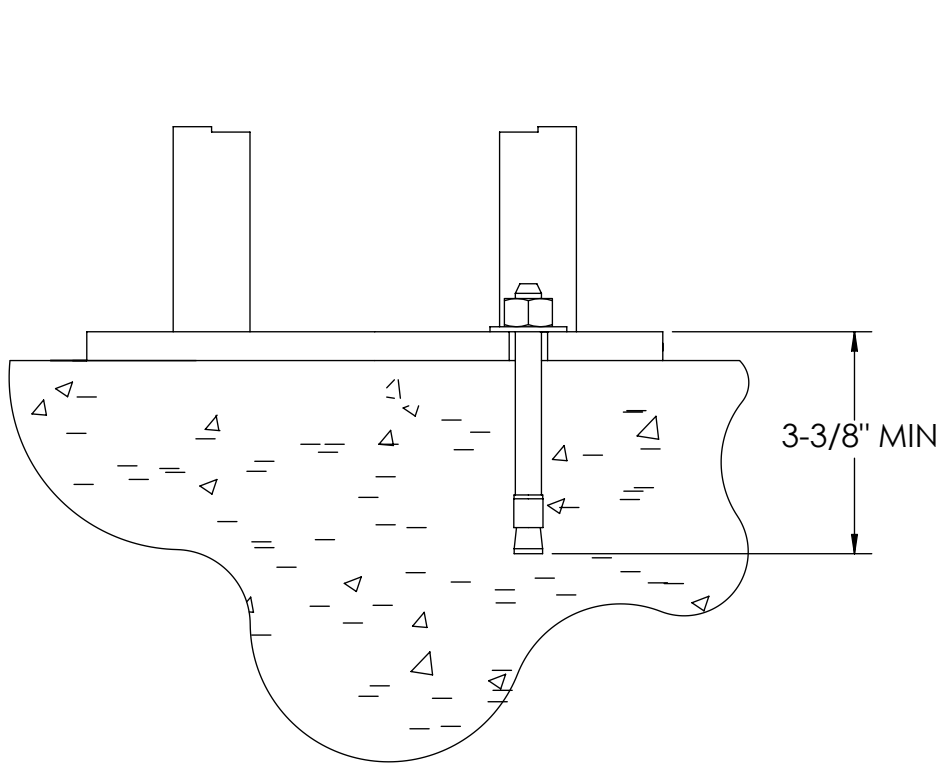
CONCRETE SCHEDULE			
VOLUME (CUBIC YARDS)			
APPROACHES			13.4
FLOOR			52.0
TOTAL			65.4
MISC. STEEL			
PIT COPING	3 X 3 X 1/4	34 LN .FT	167 LBS

CONCRETE LAYOUT

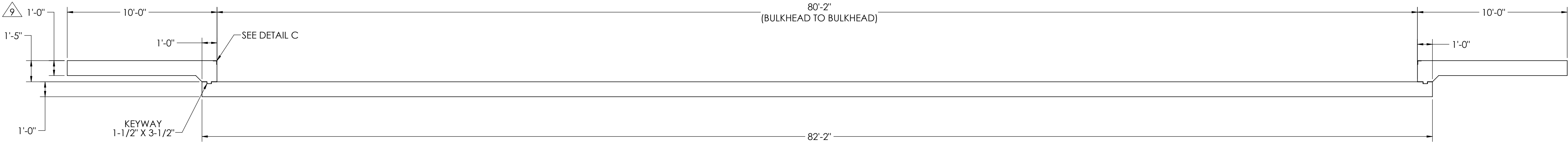
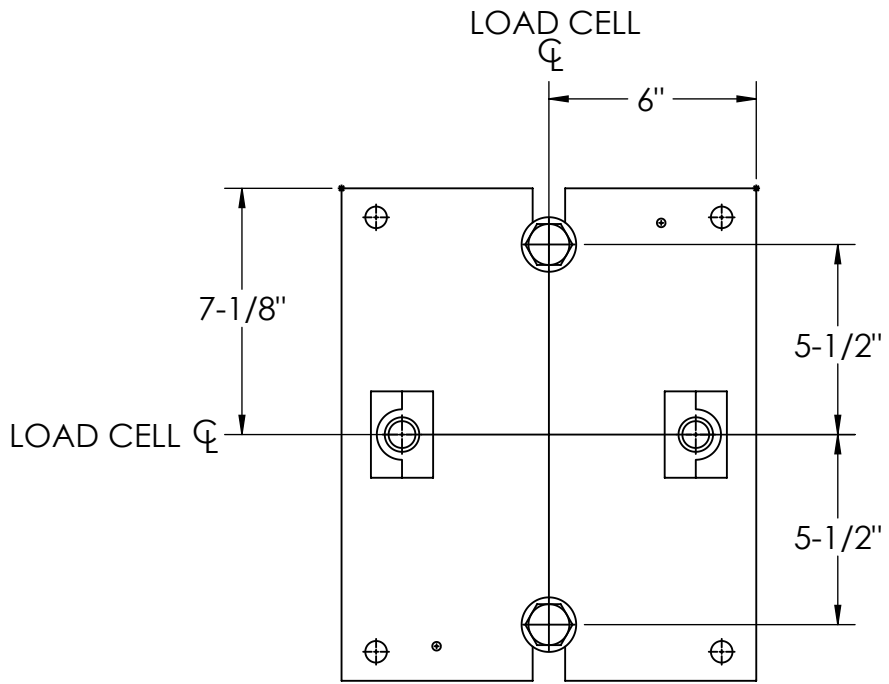
REVISION				
REV	ECO	DESCRIPTION	INIT	DATE



DETAIL C



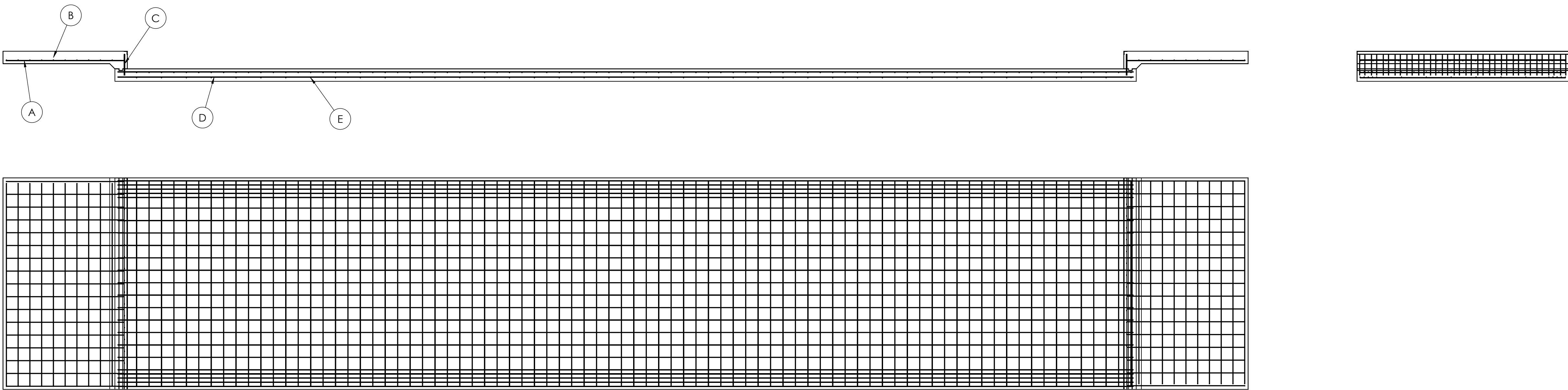
DETAIL D



DESIGNED BY: J.O.A.S. S. JOHNSON 06/05/2018	DRAWN BY: J.O.A.S. S. JOHNSON 06/05/2018	FIELD APPROVAL: J.O.A.S. S. JOHNSON 06/05/2018	RICE LAKE WEIGHING SYSTEMS	
TREATMENT NONE	THIS DRAWING AND INFORMATION CONTAINED HEREIN IS AND REMAINS THE PROPERTY OF RICE LAKE WEIGHING SYSTEMS INC. - HEREINAFTER REFERRED TO AS RLWS. IT MAY BE USED ONLY FOR RLWS' PROPOSAL AND/OR ITS CUSTOMER'S ORDERS. IT SHALL NOT BE DISCLOSED OR COPIED WITHOUT RLWS' SPECIFIC WRITTEN CONSENT AND SHALL BE IMMEDIATELY RETURNED UPON REQUEST.	UNLESS OTHERWISE SPECIFIED UNITS TO BE INCHES ALL THREADS TO BE CLASS 2 ALL DIMENSIONS APPLICABLE AFTER TREATMENT	DESCRIPTION FOUNDATION, CONCRETE SLAB 80' X 14' OTR SERIES TRUCK SCALE	
NUMBER OF CRANES: MINIMUM CRANE CAPACITY: ESTIMATED WEIGHT (POUNDS):	DO NOT SCALE DRAWING SURFACE FINISH ✓	TOLERANCES DRAWING TOLERANCES UNLESS OTHERWISE SPECIFIED .XX: ± .XXX: ± ANGLE: ±	SCALE 1:45	SHEET 2 OF 3
THIRD ANGLE PROJECTION			190855	REV A1

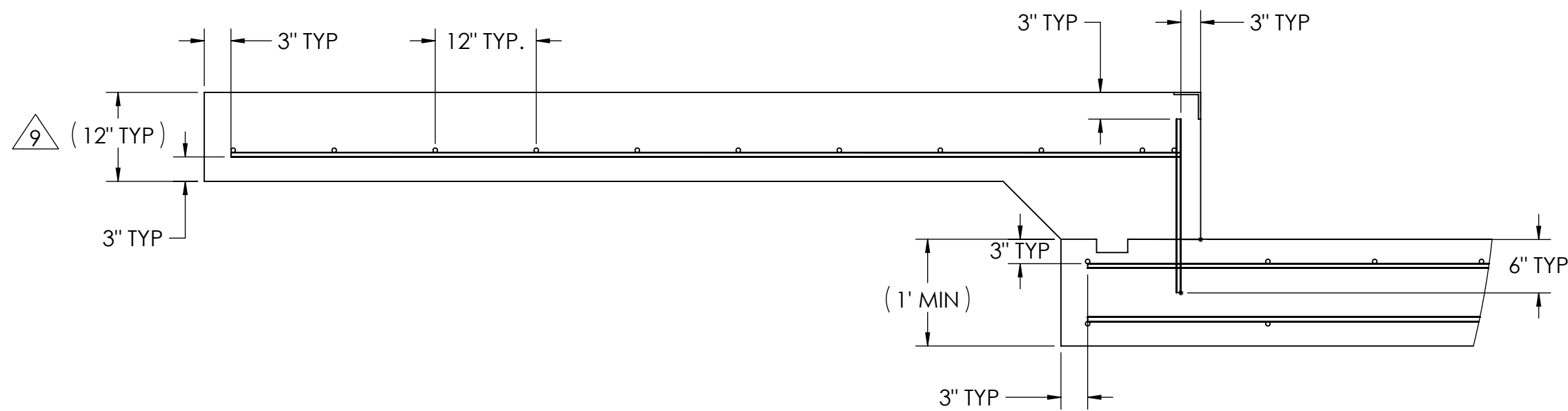
MATERIAL REQUIREMENTS				
REBAR SCHEDULE				
BAL. NO.	QUANTITY	LENGTH (FT.-IN.)	DESCRIPTION	WEIGHT
A	34	9' 6"	# 4 @ 12 O.C.	216
B	22	16' 6"	# 4 @ 12 O.C.	242
C	34	1' 8 1/2"	# 4 @ 12 O.C.	39
D	39	81' 8"	# 4 AS SHOWN	2128
E	123	11' 10"	# 4 AS SHOWN	972
TOTAL WEIGHT OF REBAR (LBS.)				3597
TOTAL LENGTH OF REBAR (FT.)				5385

REBAR LAYOUT

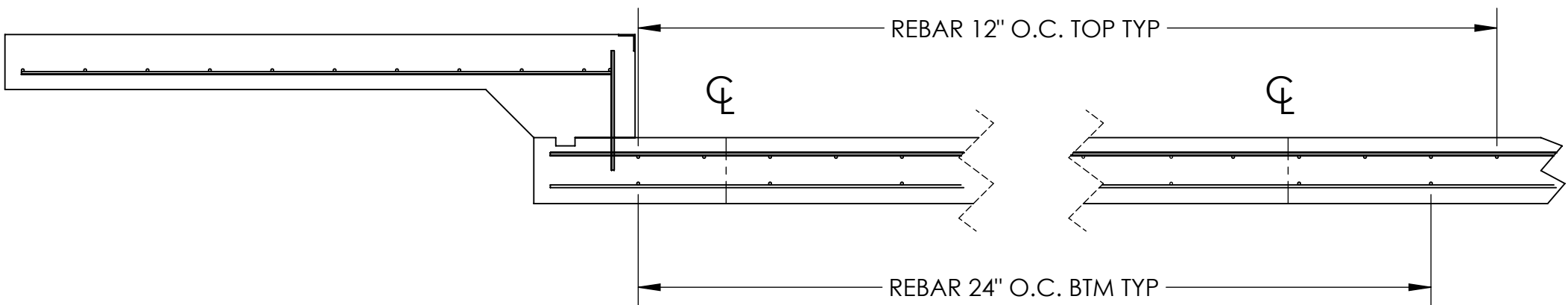


APPROACH STANDARD VIEW

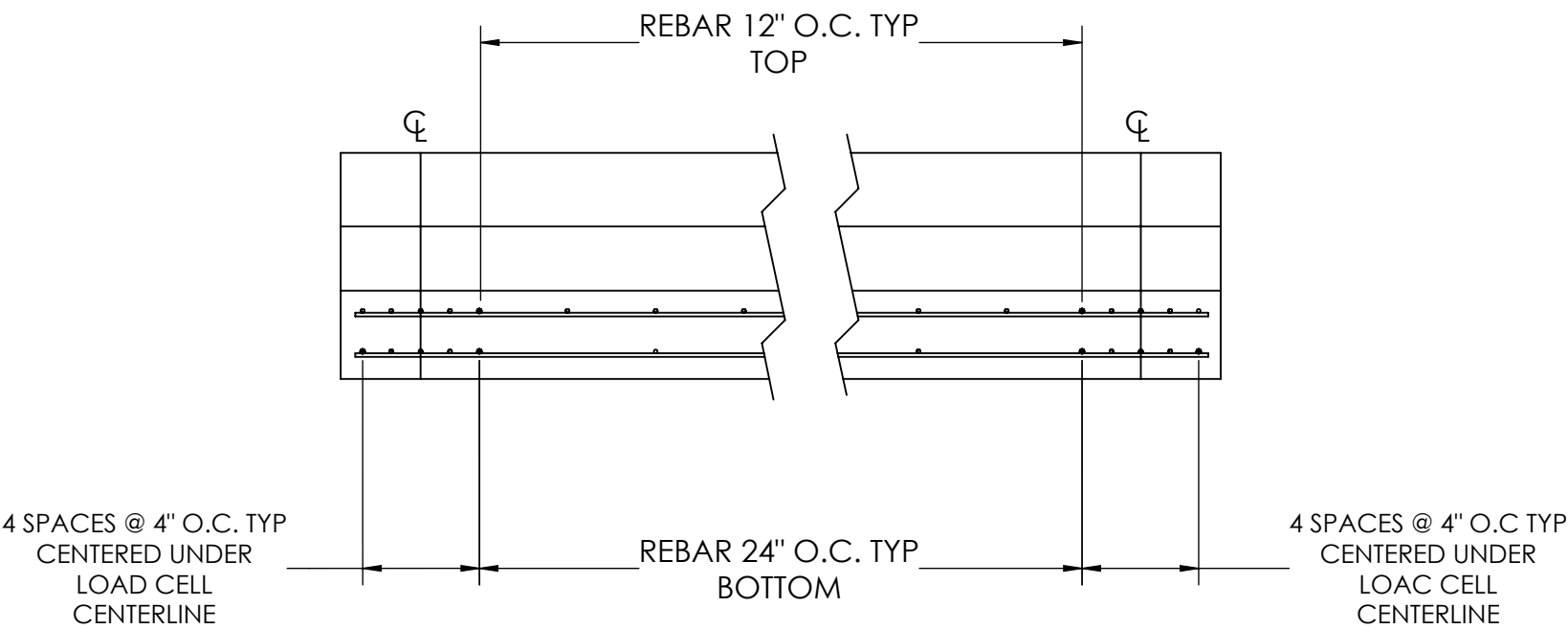
NOTES: 1) LEFT AND RIGHT APPROACHES ARE MIRROR IMAGES OF EACH OTHER AND CONTAIN AN IDENTICAL PART LIST






REBAR SPACING LENGTH



REBAR SPACING WIDTH



DESIGNED BY DATE S. JOHNSON 06/05/2018		DRAWN BY DATE S. JOHNSON 06/05/2018		FIELD ERECTING DATE S. JOHNSON 06/05/2018			
TREATMENT NONE		THIS DRAWING AND INFORMATION CONTAINED HEREIN IS AND REMAINS THE PROPERTY OF PCL LIME WELDING SYSTEMS INC. HEREBY RENTED TO YOU. IT MAY NOT BE REPRODUCED, REWRITTEN, REPRODUCED, AND/OR ITS CUSTOMERS' PROPERTY. IT SHALL NOT BE REPRODUCED, COPIED, OR TRANSMITTED IN ANY FORM OR BY ANY MEANS, WITHOUT THE WRITTEN CONSENT OF PCL LIME WELDING SYSTEMS INC. IT SHALL BE IMMEDIATELY RETURNED UPON REQUEST.		UNLESS OTHERWISE SPECIFIED, ALL UNITS TO BE CLASS 2 ALL THREADS TO BE CLASS 2 ALL DIMENSIONS APPLICABLE AFTER TREATMENT			
NUMBER OF CRANES MINIMUM CRANE CAPACITY (ESTIMATED WEIGHT POINTS)		 DO NOT SCALE DRAWING SURFACE FINISH ✓ ANGLE:		TOLERANCES DRAWING TOLERANCES UNLESS OTHERWISE SPECIFIED .XX; ± .XXX; ± ANGLE:		DESCRIPTION FOUNDATION, CONCRETE SLAB 80' x 14' OTR SERIES TRUCK SCALE	
				SCALE 1:192	SHEET 3 OF 3	MATERIAL	REV A1
				BIRD ANGLE PROJECTION 		190855	