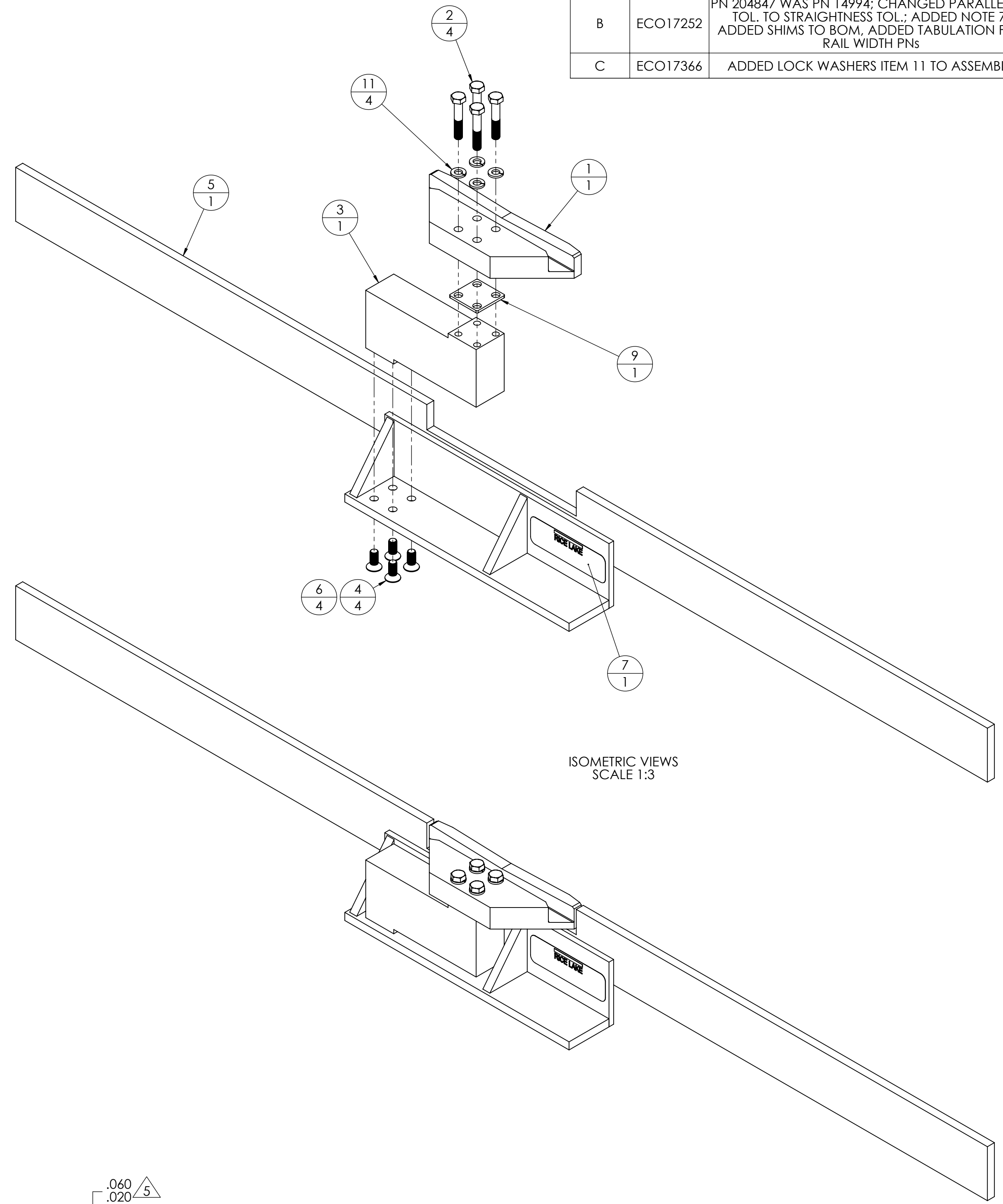
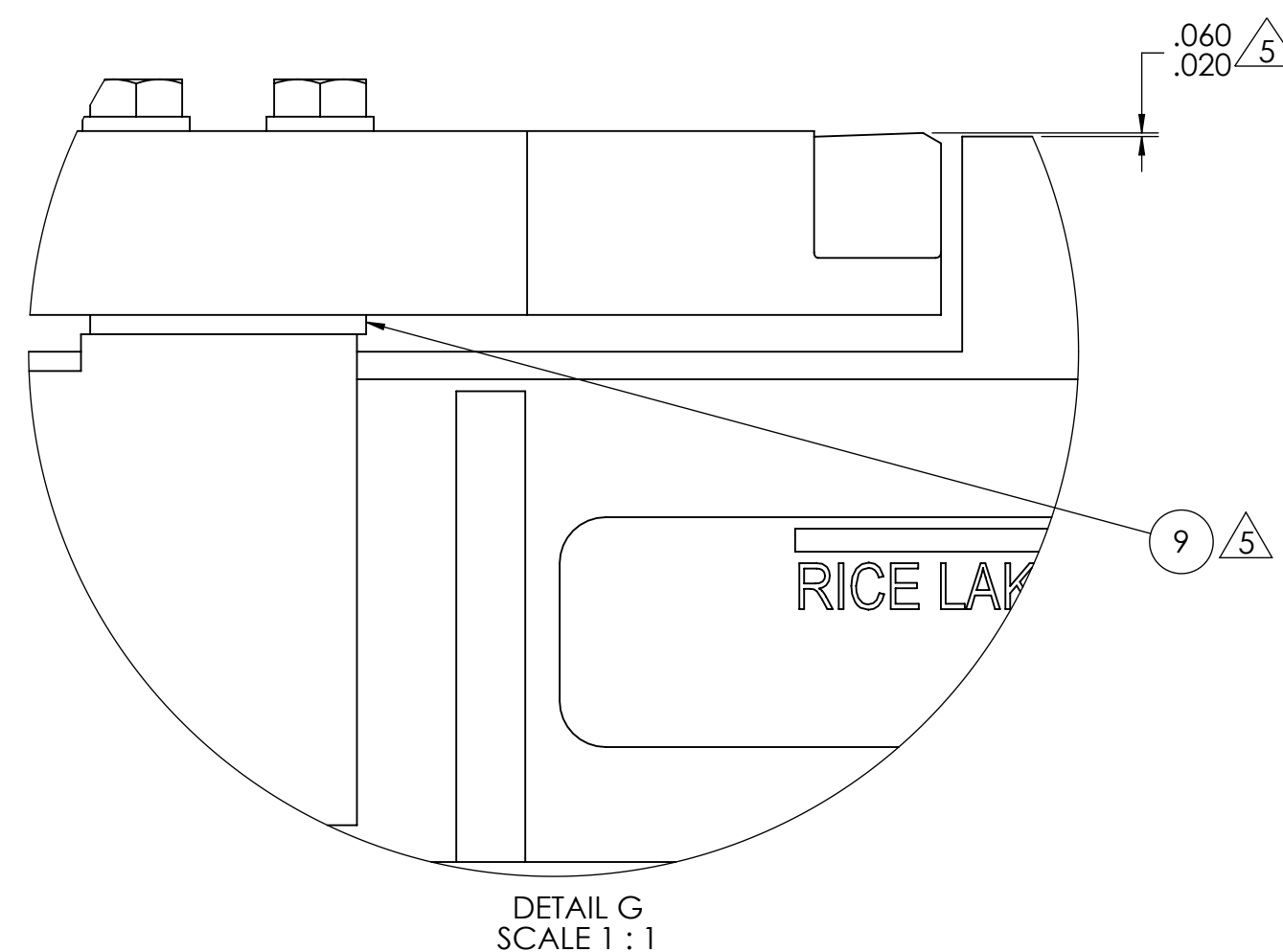
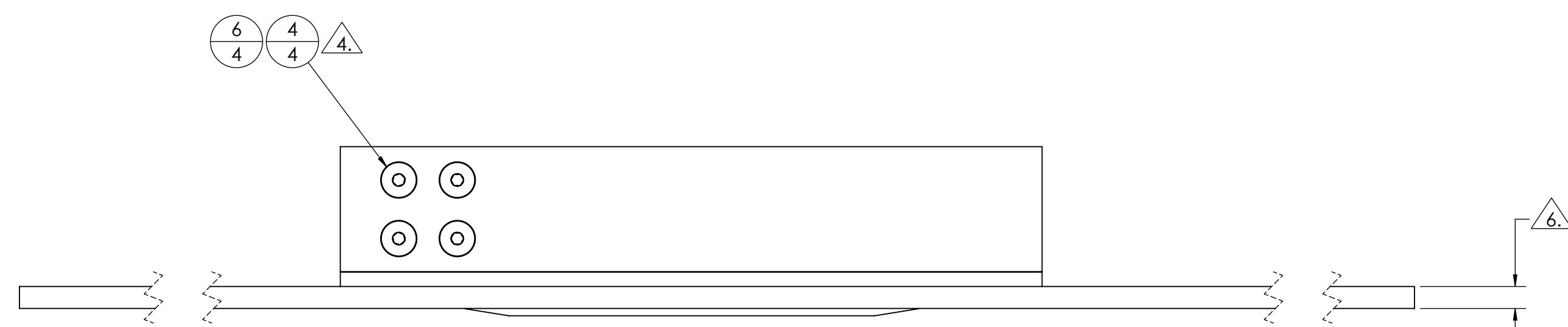
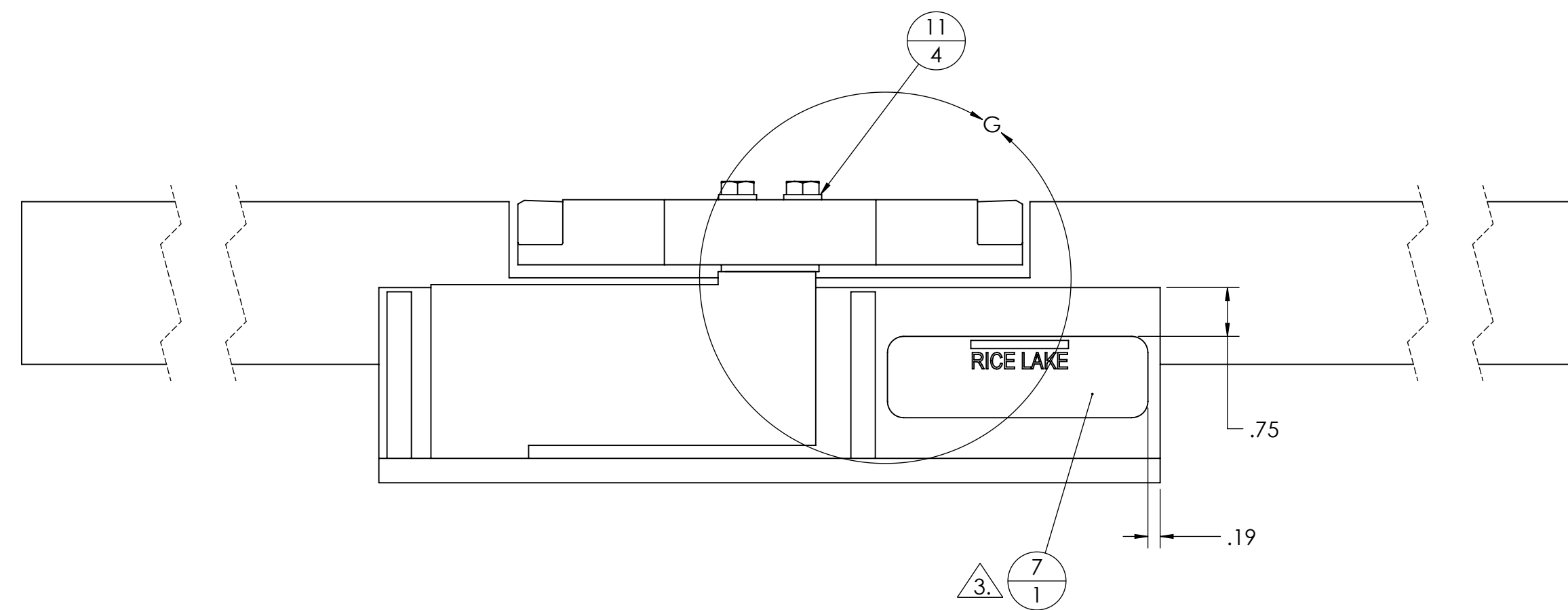
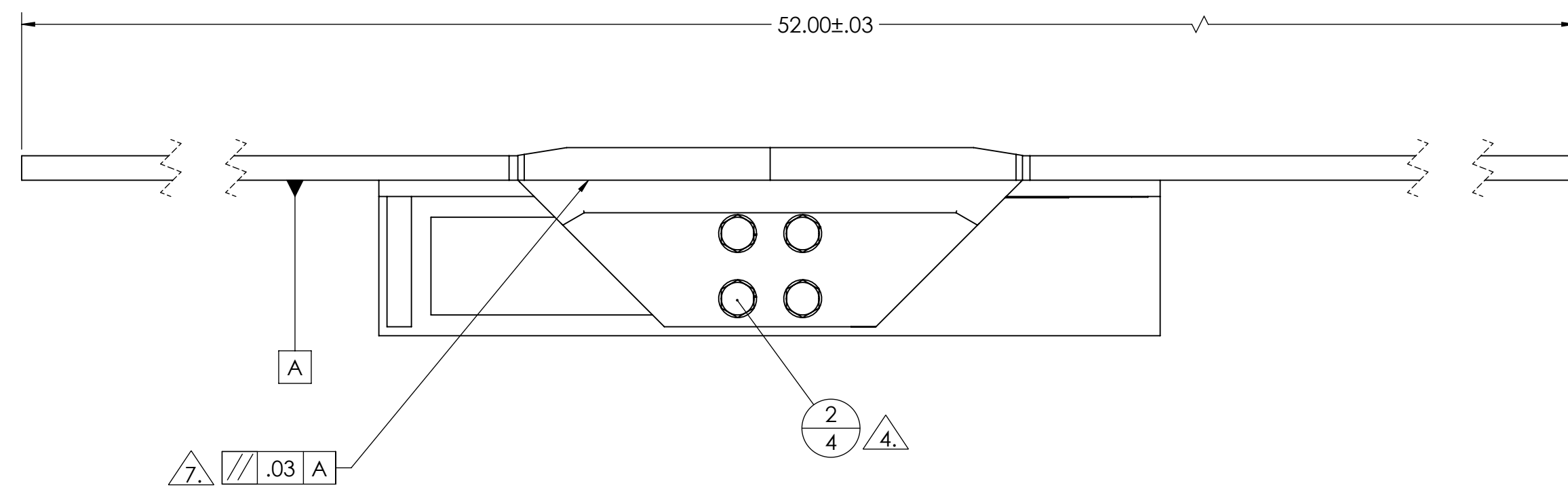


ASSEMBLY PART NUMBER	IN-LINE MONORAIL SCALE WELDMENT PART NUMBER	RAIL WIDTH
196885	196884	.375"
196888	196887	.500"

REV	ECO	REVISION DESCRIPTION	INIT	DATE
A	-	ENGINEERING RELEASE	DFH	08/08/19
B	ECO17252	PN 204847 WAS PN 14994; CHANGED PARALLELISM TOL. TO STRAIGHTNESS TOL.; ADDED NOTE 7; ADDED SHIMS TO BOM, ADDED TABULATION FOR RAIL WIDTH PNs	JRN	02/24/2021
C	ECO17366	ADDED LOCK WASHERS ITEM 11 TO ASSEMBLY	JRN	04/23/2021



ISOMETRIC VIEWS
SCALE 1:3

- NOTES:
1. MAXIMUM CAPACITY 750 LBS.
 2. SCALE MUST BE SUPPORTED CLOSE TO ITS CENTER POINT.
 3. SEE ENGINEERING SPECIFICATION RLW337 FOR LABEL DATA.
 4. APPLY LOCTITE 242 OR EQUIVALENT TO THREADS AND TORQUE TO 200 INCH POUNDS.
 5. USE SHIMS 181954, 181955, AND 205524 AS NEEDED TO REACH PROPER LIVE RAIL HEIGHT. ENSURE TO ISSUE SHIMS TO WORK ORDER AS REQUIRED TO MAINTAIN ACCURATE STOCK COUNTS. CONTACT YOUR SUPERVISOR WITH ANY QUESTIONS REGARDING THIS.
 6. SEE TABULATION
 7. FACE OF (3) TO BE PARALLEL TO FACE NOTED BY DATUM A WITHIN .03"

ITEM NO.	PART NO.	DESCRIPTION	QTY.
1	196883	LIVE RAIL, SST MONORAIL SCALE	1
2	204847	Screw,Cap 5/16-24 x 1-3/4 HEX Head Partially Threaded SST	4
3	167585	1510 500KG Load Cell	1
4	14990	5/16-24NF X 3/4 FHCS	4
5	SEE TABULATION	IN-LINE MONORAIL SCALE WELDMENT, SST	1
6	15386	PLUG, FINISHING CAP 1/4 LDPE	4
7	52342	LABEL, SERIAL TAG 4.00 X 1.25	1
8	181954	LIVE RAIL SHIM, MONORAIL .06", SST	1
9	181955	LIVE RAIL SHIM, MONORAIL .105", SST	1
10	205524	LIVE RAIL SHIM, MONORAIL .0747", SST	1
11	15154	5/16 LOCK WASHER SST	4

DESIGNED BY D.HOPKINS 08/08/2019	DRAWN BY D.HOPKINS 08/08/2019	DATE J.NELSON 04/23/2021	
<small>THIS DRAWING AND INFORMATION CONTAINED HEREIN IS AND REMAINS THE PROPERTY OF RICE LAKE WEIGHING SYSTEMS INC. - HEREINAFTER REFERRED TO AS RLWS. IT MAY BE USED ONLY FOR RLWS' PROPOSAL AND/OR ITS CUSTOMER'S ORDERS. IT SHALL NOT BE DISCLOSED OR COPIED WITHOUT RLWS' SPECIFIC WRITTEN CONSENT AND SHALL BE IMMEDIATELY RETURNED UPON REQUEST.</small>			
TREATMENT NONE		<small>UNLESS OTHERWISE SPECIFIED UNITS TO BE INCHES ALL THREADS TO BE CLASS 2 AFTER TREATMENT</small>	
<small>DO NOT SCALE DRAWING SURFACE FINISH</small>		<small>DRAWING TOLERANCES UNLESS OTHERWISE SPECIFIED .XX: ±.01 .XXX: ±.005 ANGLE: ±1°</small>	
<small>NUMBER OF CRANES</small> <small>MINIMUM CRANE CAPACITY</small> <small>ESTIMATED WEIGHT (POUNDS)</small>	<small>SCALE</small> 1:2	<small>SHEET</small> 1 OF 2	<small>MATERIAL</small> SEE BOM
23.62			<small>THIRD ANGLE PROJECTION</small>

196885 C