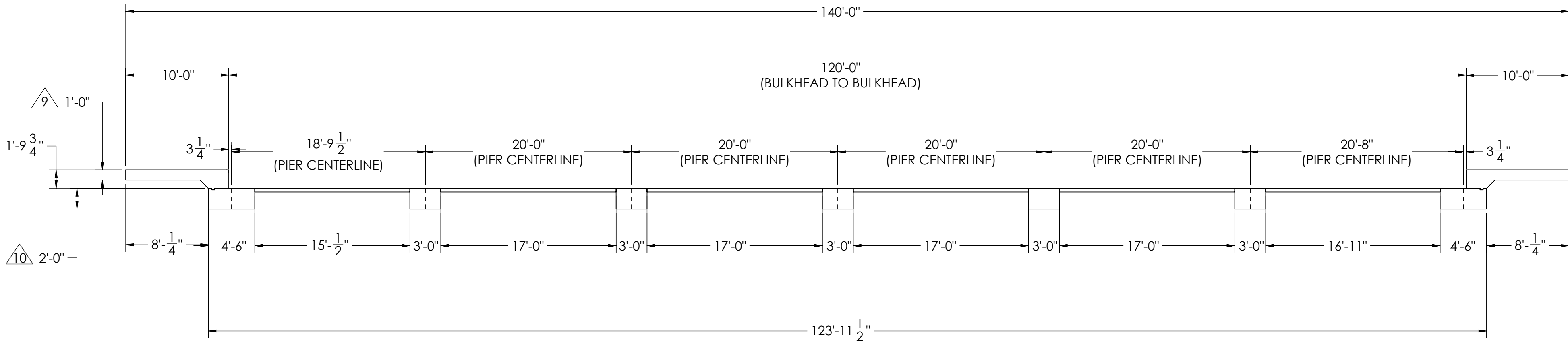
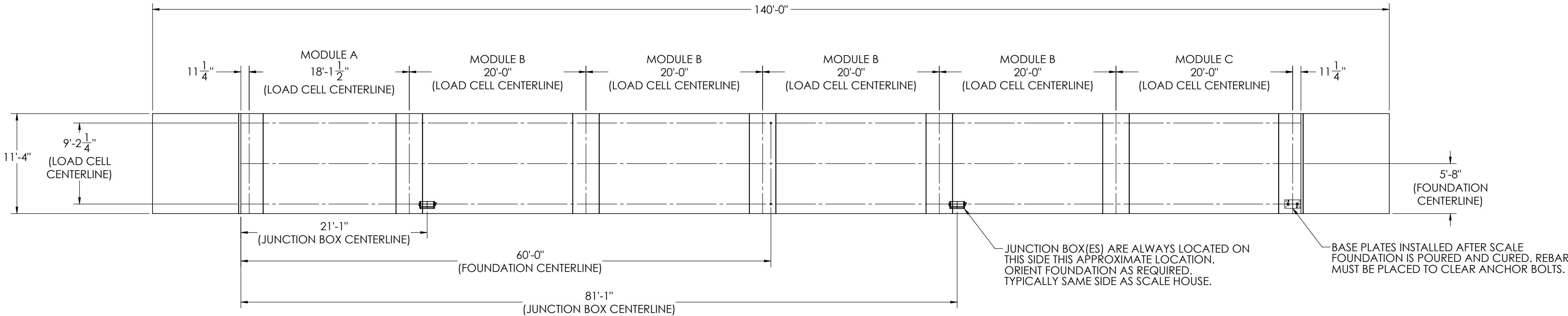








DETAILS

REVISION				
REV.	ECO	DESCRIPTION	INIT	DATE
A		ENGINEERING RELEASE	SPJ	03/30/2020



NOTES:

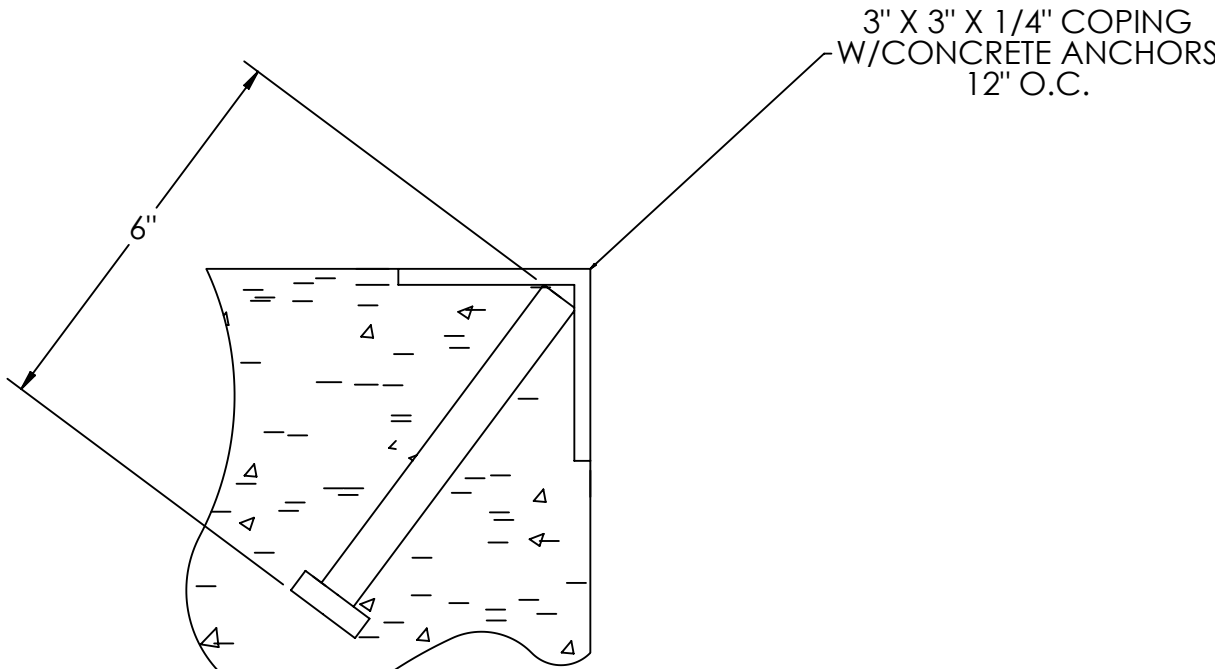
- 1) CONCRETE: f'c = 3000 PSI @ 28 DAYS.
- 2) REINFORCING STEEL: DEFORMED BARS ASTM A615 GRADE 60.
- 3) STATE AND LOCAL AGENCIES MAY HAVE VARIOUS REQUIREMENTS FOR APPROACH RAMP LENGTH, PITCH, AND FOR CLEAN OUT HEIGHT. PLEASE CHECK WITH ALL AGENCIES PRIOR TO CONSTRUCTION.
- 4) MONOLITHIC POUR IS ALLOWED AT CONTRACTOR'S DISCRETION.
- 5) DEVELOP AND MAINTAIN SITE GRADES WHICH WILL RAPIDLY DRAIN SURFACE AND ROOF RUN-OFF AWAY FROM FOUNDATION.
- 6) FOOTINGS HAVE BEEN DESIGNED FOR A MINIMUM SOIL PRESSURE OF 2500 PSF; IT WILL BE THE RESPONSIBILITY OF OTHERS TO VERIFY THIS VALUE.
- 7) WHERE REINFORCING BARS ARE SHOWN CONTINUOUS, LAP SPlice BARS 40 DIAMETERS
- 8) APPROACHES TO BE A COMMON PLANE WITHIN 1/4".

DESIGNED BY DATE S. JOHNSON 03/31/2020		DRAWN BY DATE S. JOHNSON 03/31/2020		FREE-APPROVAL DATE S. JOHNSON 03/31/2020			
TREATMENT NONE		THIS DRAWING AND INFORMATION CONTAINED HEREIN IS AND REMAINS THE PROPERTY OF RIGLAK WEIGHING SYSTEMS INC. HEREINAFTER REFERRED TO AS RWS. IT MAY BE USED ONLY FOR THE RIGLAK PRODUCT AND ITS CUSTOMER. ORDERED. IF SHALL NOT BE DISCLOSED OR COPIED WITHOUT RWS SPECIFIC WRITTEN CONSENT AND SHALL BE IMMEDIATELY RETURNED UPON REQUEST.		UNLESS OTHERWISE SPECIFIED UNITS TO BE INCHES. ALL TOLERANCES TO BE CLASS 2 ALL DIMENSIONS APPLICABLE AFTER TREATMENT			
NUMBER OF CRANES: 		TOLERANCES DO NOT SCALE DRAWING UNLESS OTHERWISE SPECIFIED .XX: ± .XXX: ± ✓ ANGLE: ±		DESCRIPTION: FOUNDATION, CONCRETE PIER 120' x 11' OTR SERIES TRUCK SCALE			
MINIMUM CRANE CAPACITY: 		DRAWING TOLERANCES .XX: ± .XXX: ± ✓ ANGLE: ±		SCALE 1:90		SHEET 1 OF 3	
ESTIMATED WEIGHT (POUNDS) 		DRAWING TOLERANCES .XX: ± .XXX: ± ✓ ANGLE: ±		MATERIAL 200190		REV A	

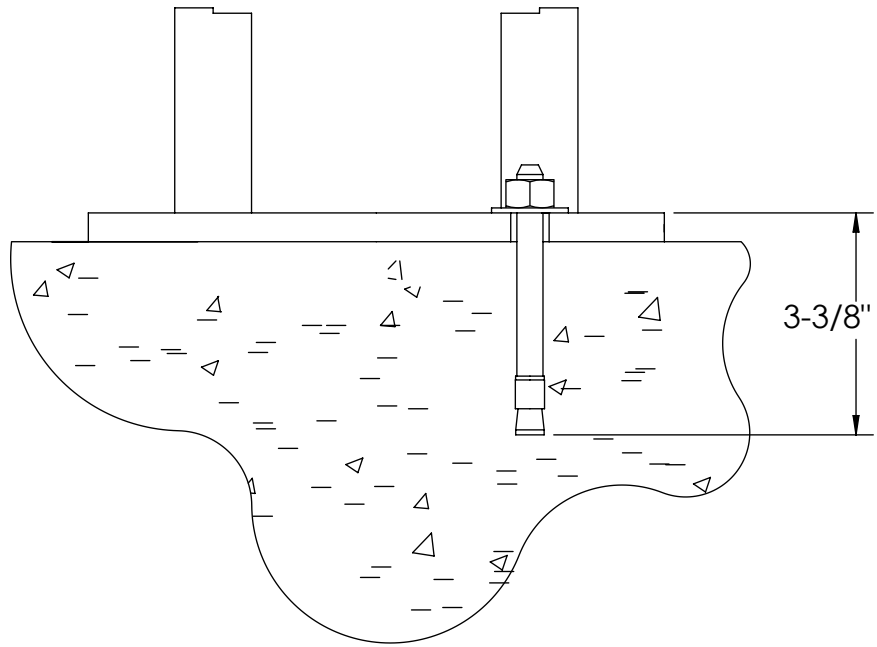
CONCRETE SCHEDULE			
		VOLUME (CUBIC YARDS)	
APPROACHES		10.1	
CLEANOUT		14.0	
PIERS		20.2	
TOTAL		44.3	
MISC. STEEL			
PIT COPING	3 X 3 X 1/4	23 LN .FT	113 LBS

VOLUME SHOWN FOR STATED PIER DEPTH.
ADD ADDITIONAL CONCRETE FOR
DEEPER PIERS AS NEEDED.

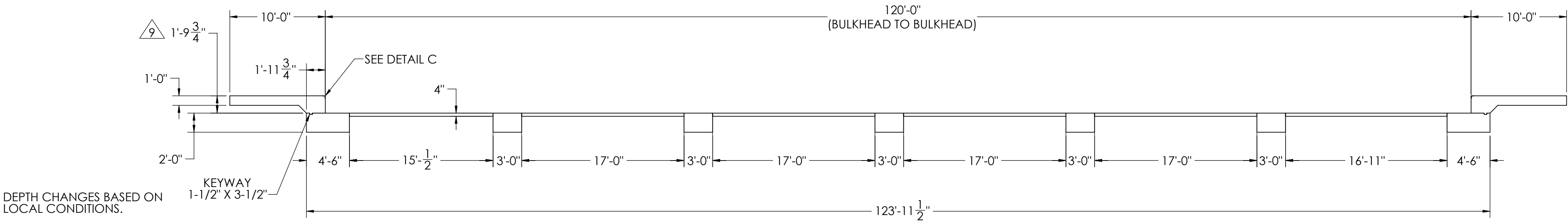
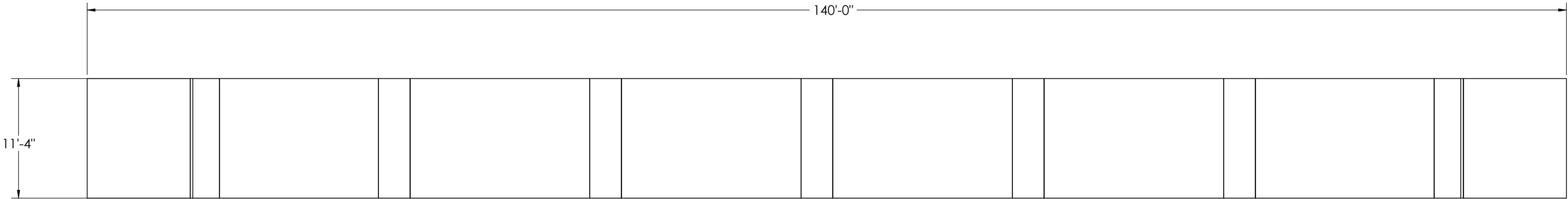
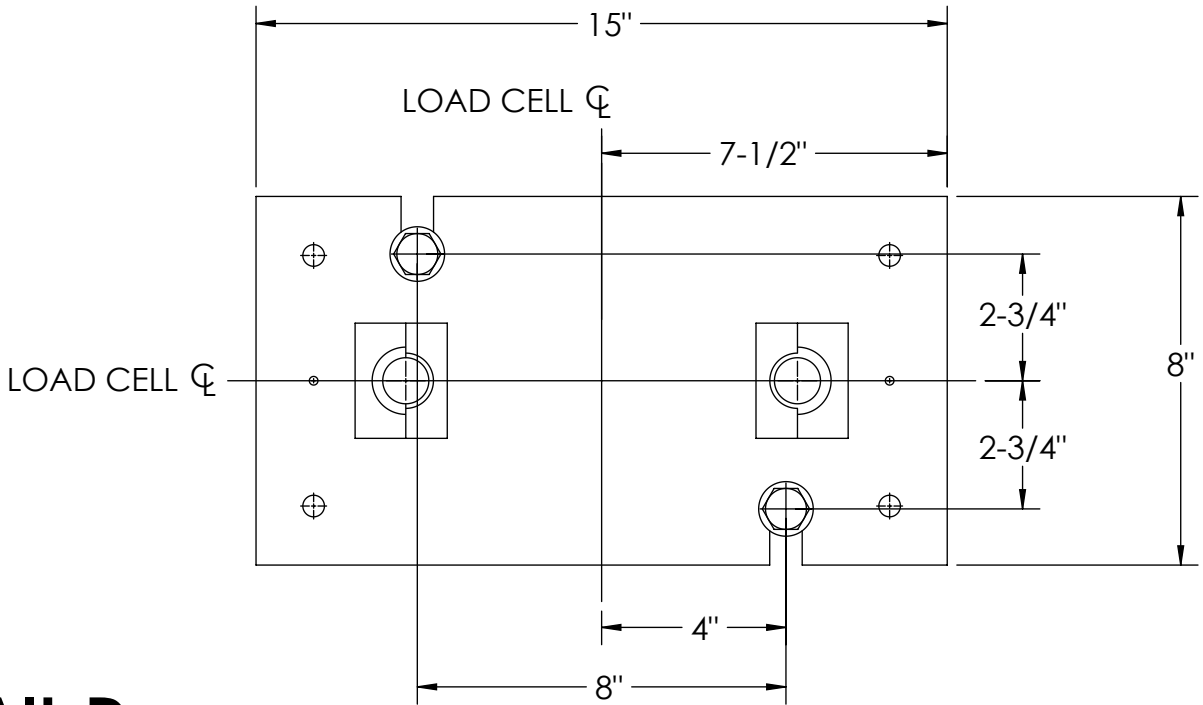
CONCRETE LAYOUT



DETAIL C



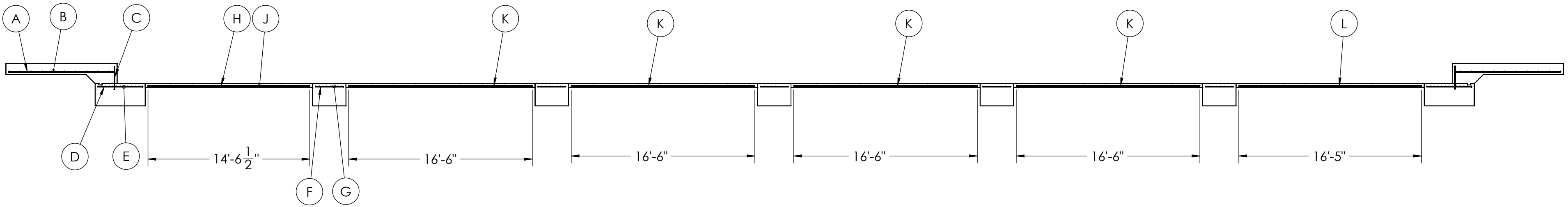
DETAIL D



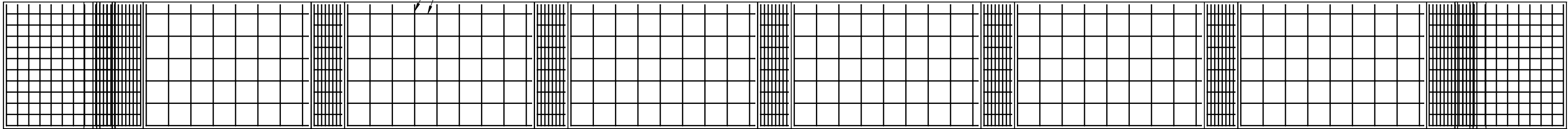
DESIGNED BY: J. JOHNSON S. JOHNSON 03/31/2020	DRAWN BY: J. JOHNSON S. JOHNSON 03/31/2020	PIER APPROVAL: J. JOHNSON S. JOHNSON 03/31/2020	RICE LAKE WEIGHING SYSTEMS	
TREATMENT NONE	THIS DRAWING AND INFORMATION CONTAINED HEREIN IS AND REMAINS THE PROPERTY OF RICE LAKE WEIGHING SYSTEMS INC. - HEREINAFTER REFERRED TO AS RLWS. IT MAY BE USED ONLY FOR RLWS' PROPOSAL AND/OR ITS CUSTOMER'S ORDERS. IT SHALL NOT BE DISCLOSED OR COPIED WITHOUT RLWS SPECIFIC WRITTEN CONSENT AND SHALL BE IMMEDIATELY RETURNED UPON REQUEST.	UNLESS OTHERWISE SPECIFIED UNITS TO BE INCHES ALL THREADS TO BE CLASS 2 ALL DIMENSIONS APPLICABLE AFTER TREATMENT	DESCRIPTION FOUNDATION, CONCRETE PIER 120' X 11' OTR SERIES TRUCK SCALE	
NUMBER OF CRANES: MINIMUM CRANE CAPACITY: ESTIMATED WEIGHT (POUNDS)	DO NOT SCALE DRAWING SURFACE FINISH ✓	TOLERANCES DRAWING TOLERANCES UNLESS OTHERWISE SPECIFIED .XX: .XXX: ANGLE:	SCALE 1:90	SHEET 2 OF 3
THIRD ANGLE PROJECTION		200190	REV A	

MATERIAL REQUIREMENTS				
REBAR SCHEDULE				
BAL. NO.	QUANTITY	LENGTH (FT-IN.)	DESCRIPTION	WEIGHT
A	22	9' 6"	# 4 @ 12 O.C.	140
B	20	10' 10"	# 4 @ 12 O.C.	145
C	22	2' 0 3/4"	# 4 @ 12 O.C.	30
D	22	4' 0"	# 4 @ 12 O.C.	59
E	26	10' 10"	# 4 @ 4 O.C.	188
F	55	2' 6"	# 4 @ 12 O.C.	92
G	45	10' 10"	# 4 @ 4 O.C.	326
CLEANOUT SCHEDULE				
H	6	14' 6 1/2"	# 4 @ 24 O.C.	58
J	63	10' 10"	# 4 @ 24 O.C.	456
K	24	16' 6"	# 4 @ 24 O.C.	265
L	6	16' 5"	# 4 @ 24 O.C.	66
TOTAL WEIGHT OF REBAR (LBS.)				1824
TOTAL LENGTH OF REBAR (FT.)				2730
WIRE MESH		6 X 6-10 GA.		1099 SQ FT

REBAR LAYOUT



#4 REBAR SPACED EVERY 24"
OR YOU MAY SUBSTITUTE
6X6X10 GA. WIRE MESH

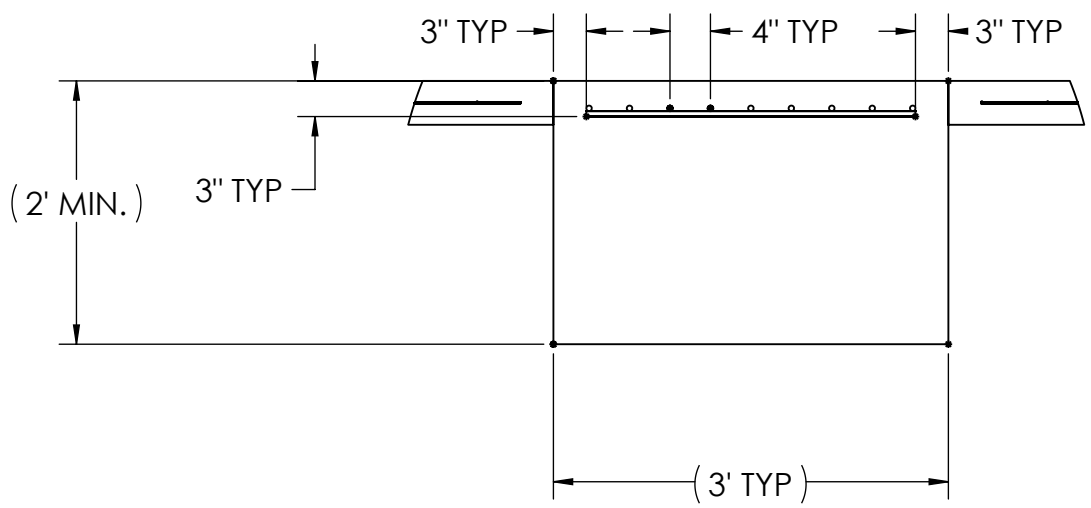
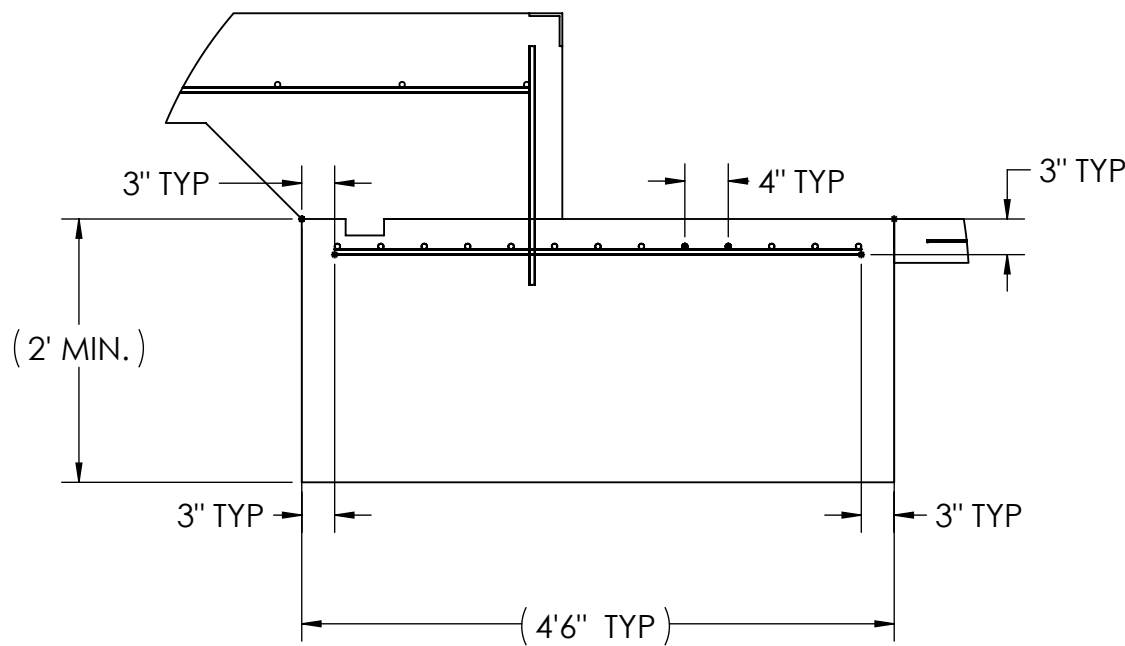
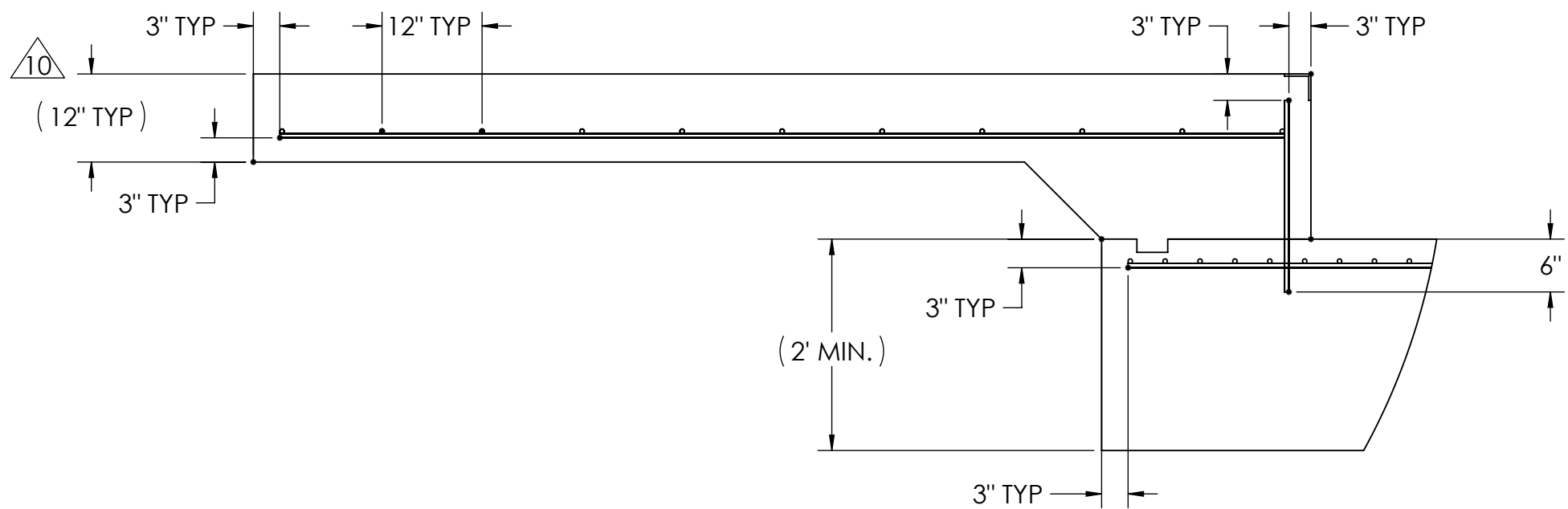





APPROACH STANDARD VIEWS

APPROACH PIER STANDARD VIEWS

PIER STANDARD VIEWS

NOTES: 1) LEFT AND RIGHT APPROACHES ARE MIRROR IMAGES OF EACH OTHER AND CONTAIN AN IDENTICAL PART LIST



DESIGNED BY DATE S. JOHNSON 03/31/2020		DRAWN BY DATE S. JOHNSON 03/31/2020		FIELD OPERATOR DATE S. JOHNSON 03/31/2020			
TREATMENT NONE		THIS DRAWING AND INFORMATION CONTAINED HEREIN IS AND REMAINS THE PROPERTY OF RICE LAKE WEIGHING SYSTEMS INC. HEREINAFTER RELEVANT TO THIS PROJECT. IT MAY BE USED FOR RFP'S, PROPOSALS, AND/OR FOR ITS CUSTOMER'S REFERENCE. IT SHALL NOT BE REPRODUCED, COPIED, OR TRANSMITTED IN ANY FORM OR BY ANY MEANS WITHOUT THE WRITTEN CONSENT AND SHALL BE IMMEDIATELY RETURNED UPON REQUEST.		UNLESS OTHERWISE SPECIFIED, ALL UNITS TO BE CLASS 2 ALL THREADS TO BE CLASS 2 ALL DIMENSIONS APPLICABLE AFTER TREATMENT			
NUMBER OF CRANES MINIMUM CRANE CAPACITY (ESTIMATED WEIGHT POINT(S))		 DO NOT SCALE DRAWING SURFACE FINISH ✓ ANGLE: ±		TOLERANCES DRAWING TOLERANCES UNLESS OTHERWISE SPECIFIED .XX; ± .XXX; ± ANGLE: ±		DESCRIPTION FOUNDATION, CONCRETE PIER 120' x 11' OTR SERIES TRUCK SCALE	
		SCALE 1:48		SHEET 3 OF 3		MATERIAL	
		BIRD ANGLE PROJECTION 		PIN 200190		REV A	