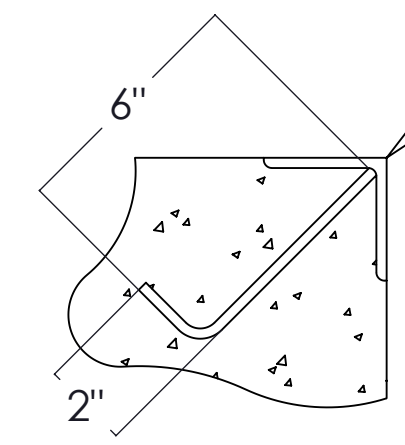


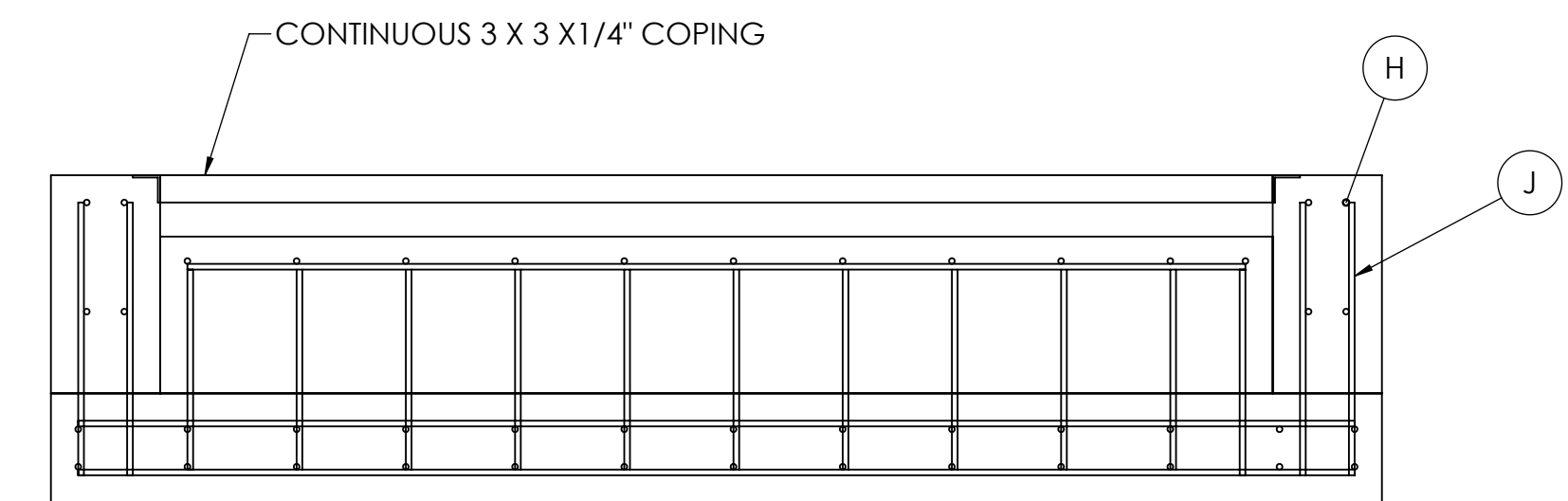
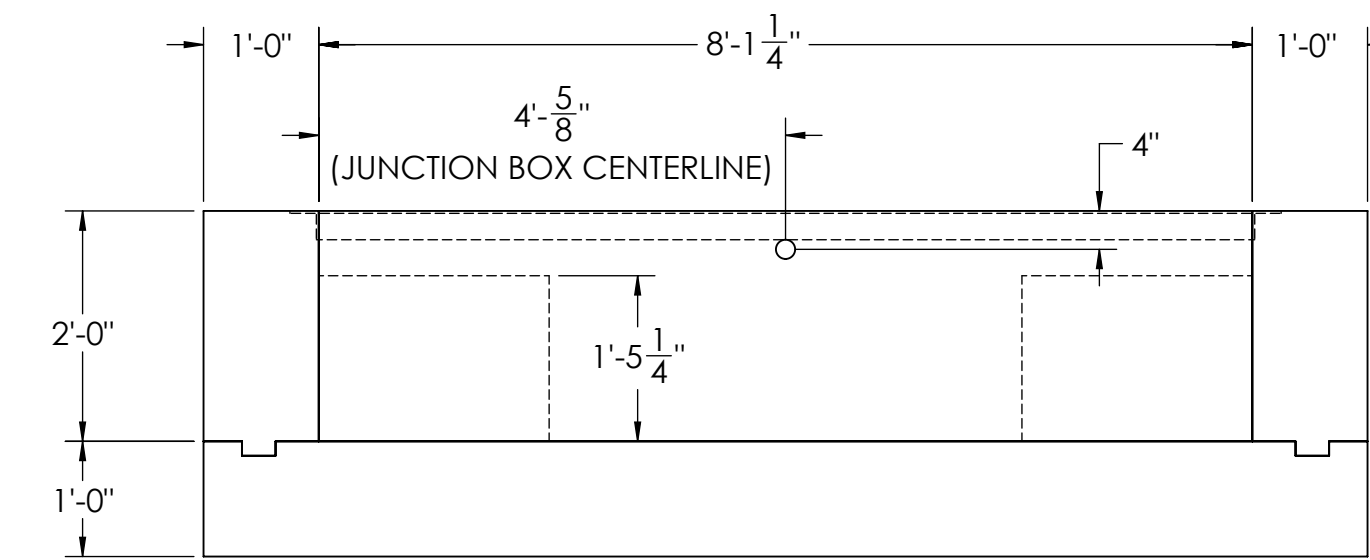
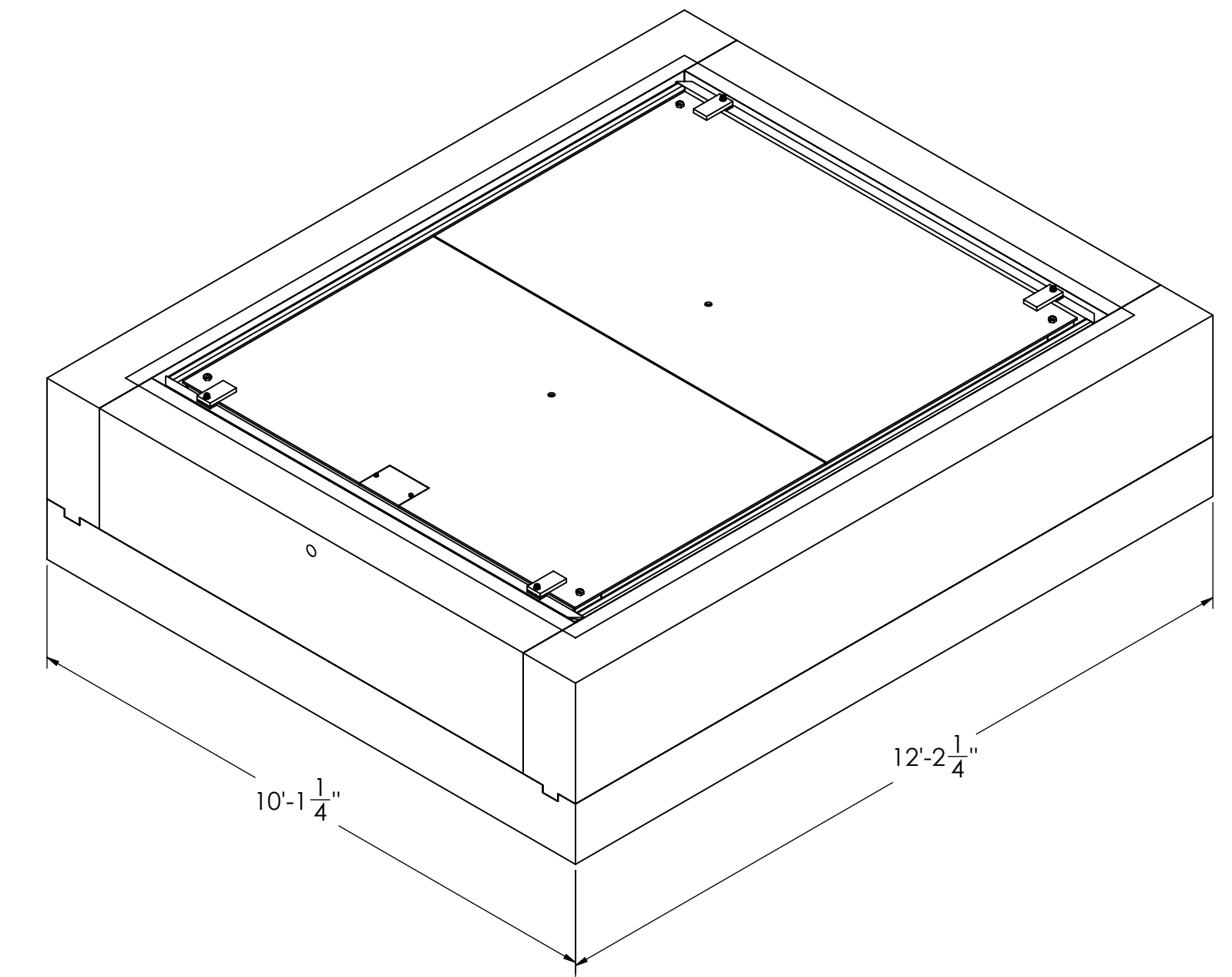
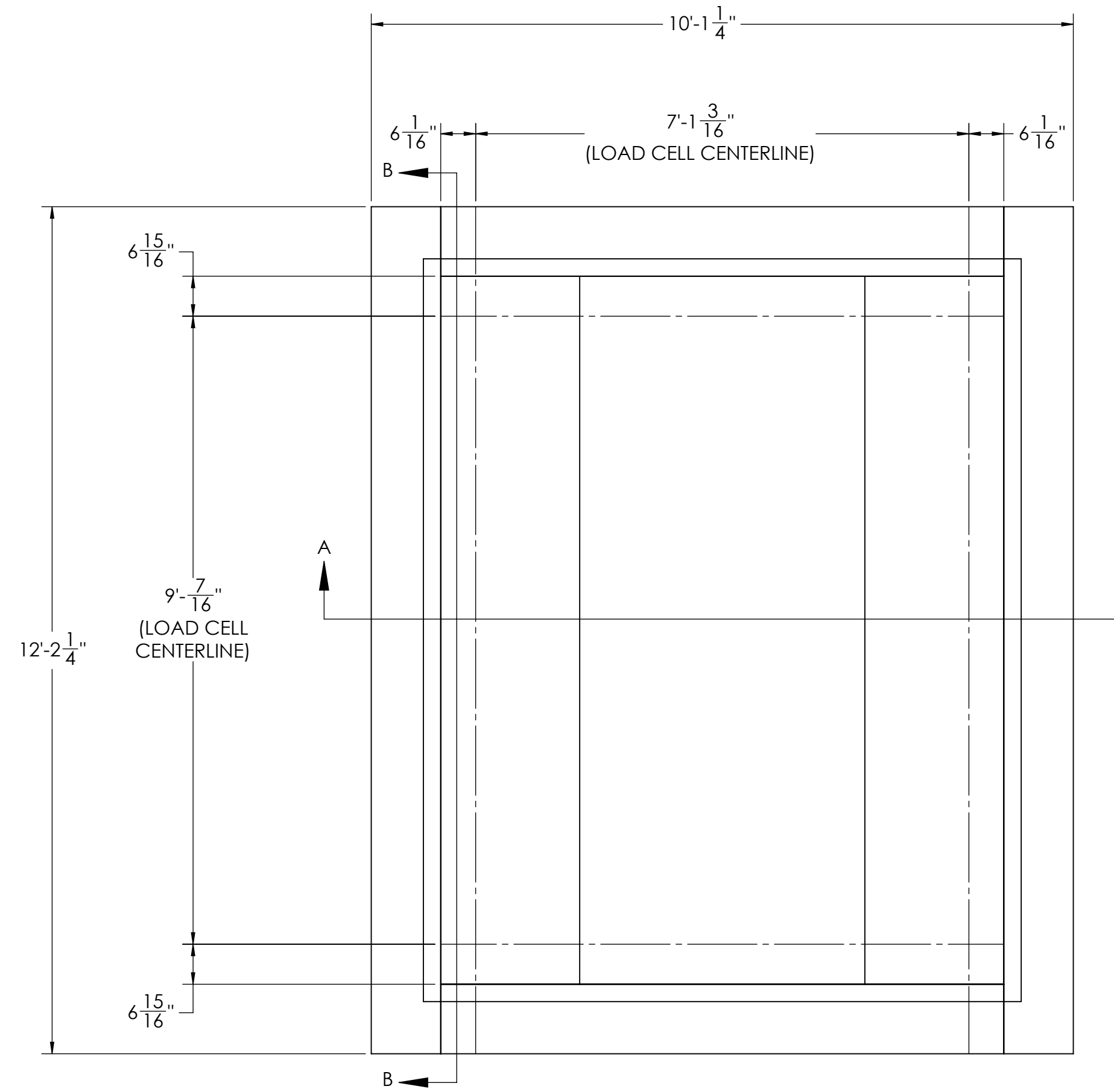
MATERIAL REQUIREMENTS				
REBAR SCHEDULE				
BAL. NO.	QUANTITY	LENGTH (IN.)	DESCRIPTION	WEIGHT
A	48	30	# 5 @ 12 O.C.	125
B	8	140	# 5 @ 12 O.C.	97
C	24	115	# 5 @ 12 O.C.	240
D	20	140	# 5 @ 12 O.C.	243
E	22	32	# 5 @ 12 O.C.	61
F	22	22	# 5 @ 12 O.C.	42
G	8	140	# 5 @ 8 O.C.	97
H	8	115	# 5 @ 12 O.C.	80
J	36	30	# 5 @ 12 O.C.	94
TOTAL WEIGHT OF REBAR (LBS.)				1080
TOTAL LENGTH OF REBAR (FT.)				1036
CONCRETE SCHEDULE				
				VOLUME (CUBIC YARDS)
FLOOR				4.5
PIERS				2.2
WALLS				3.0
TOTAL				9.7
MISC. STEEL				
PIT COPING	3 X 3 X 1/4	40 LN. FT	196 LBS	

REVISION				
REV	ECO	DESCRIPTION	INIT	DATE
A		ENGINEERING RELEASE	SPJ	05/13/2020

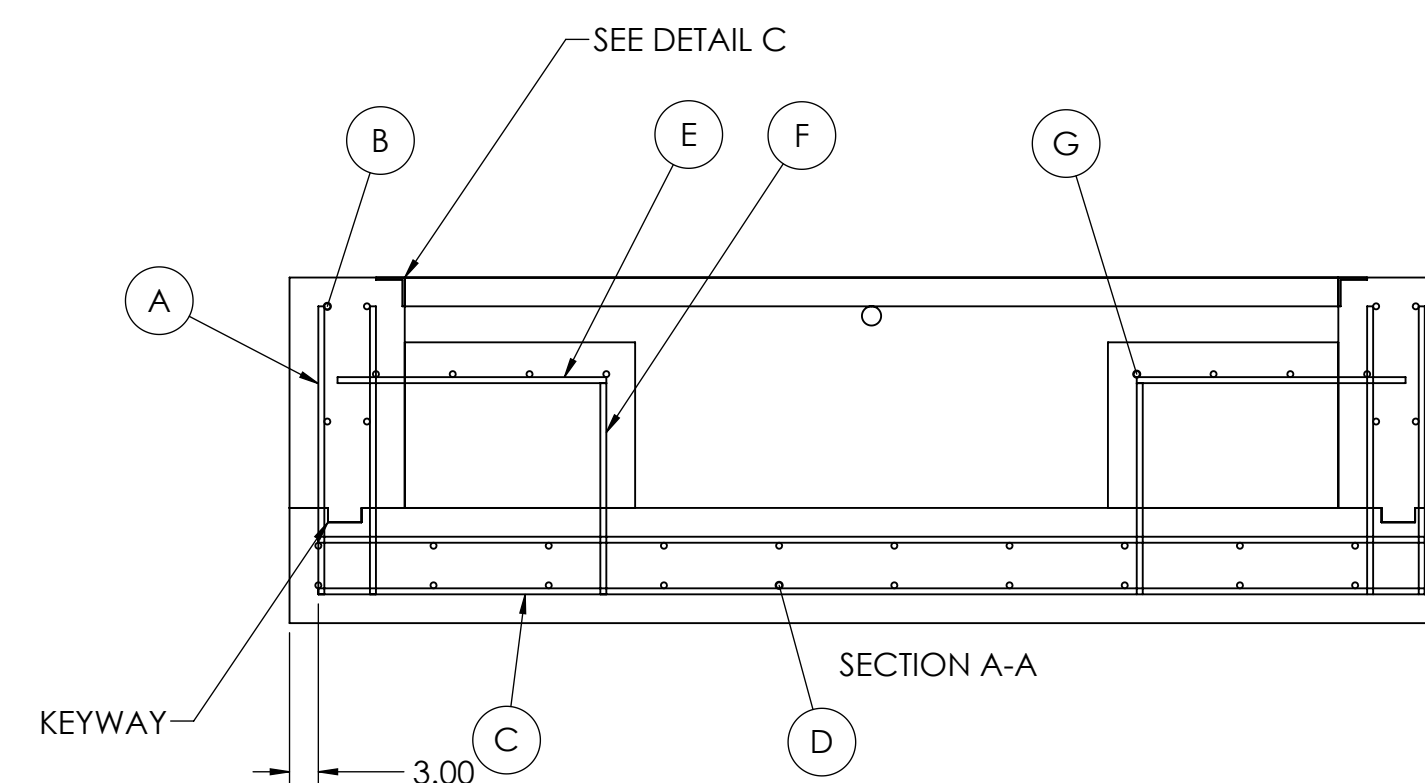


3 X 3 X 1/4 X COPING
ANCHOR F.B. 2" X 1/4" WELDED
TO ANGLE @ 18" C.C.
NOTE:
ANCHOR BARS MAY BE SUBSTITUTED BY
"NELSON" TYPE C-4 ANCHOR STUDS,
Ø 1/2 X 6" LONG, OR APPROVED EQUIV.
(APPROACH COPING NOT INCLUDED)

DETAIL C



SECTION B-B



NOTES:

- 1) CONCRETE: $f_c = 3500$ PSI @ 28 DAYS.
- 2) REINFORCING STEEL: DEFORMED BARS ASTM A615 GRADE 60.
- 3) STATE AND LOCAL AGENCIES MAY HAVE VARIOUS REQUIREMENTS FOR APPROACH RAMP LENGTH, PITCH, AND FOR CLEAN OUT HEIGHT. PLEASE CHECK WITH ALL AGENCIES PRIOR TO CONSTRUCTION.
- 4) MONOLITHIC POUR OF SLAB AND PIERS IS ALLOWED AT CONTRACTOR'S DISCRETION.
- 5) DEVELOP AND MAINTAIN SITE GRADES WHICH WILL RAPIDLY DRAIN SURFACE AND ROOF RUN-OFF AWAY FROM FOUNDATION.
- 6) FOOTINGS HAVE BEEN DESIGNED FOR A MINIMUM SOIL PRESSURE OF 3000 PSF, IT WILL BE THE RESPONSIBILITY OF OTHERS TO VERIFY THIS VALUE.
- 7) WHERE REINFORCING BARS ARE SHOWN CONTINUOUS, LAP SPLICE BARS 40 DIAMETERS.
- 8) APPROACHES TO BE A COMMON PLANE WITHIN 1/4".
- 9) IF FROST CAN PENETRATE BELOW FOUNDATION, AT LEAST 18 INCHES OF WELL DRAINED, COMPACTED BASE MATERIAL MUST BE PROVIDED UNDER FOUNDATION

DESIGNED BY / DATE S. JOHNSON 05/13/2020	DRAWN BY / DATE S. JOHNSON 05/13/2020	PREP APPROVAL / DATE S. JOHNSON 05/13/2020	
TREATMENT NONE	THIS DRAWING AND INFORMATION CONTAINED HEREIN IS AND REMAINS THE PROPERTY OF RICE LAKE WEIGHING SYSTEMS INC. - HEREINAFTER REFERRED TO AS RLS. IT MAY BE USED ONLY FOR RLS' PROPOSAL AND/OR ITS CUSTOMER'S ORDERS. IT SHALL NOT BE DISCLOSED OR COPIED WITHOUT RLS' SPECIFIC WRITTEN CONSENT AND SHALL BE IMMEDIATELY RETURNED UPON REQUEST.	UNLESS OTHERWISE SPECIFIED UNITS TO BE INCHES ALL THREADS TO BE CLASS 2 ALL DIMENSIONS APPLICABLE AFTER TREATMENT	
NUMBER OF CRANES MINIMUM CRANE CAPACITY ESTIMATED WEIGHT (POUNDS)	DO NOT SCALE DRAWING SURFACE FINISH TOLERANCES UNLESS OTHERWISE SPECIFIED .XX: .XXX: ANGLE:	SCALE: 1:20 SHEET: 1 OF 1 THIRD ANGLE PROJECTION 	FOUNDATION, CONCRETE PIT ROUGHDECK 169645 AX-1 SERIES SCALE MATERIAL 201011 REV A