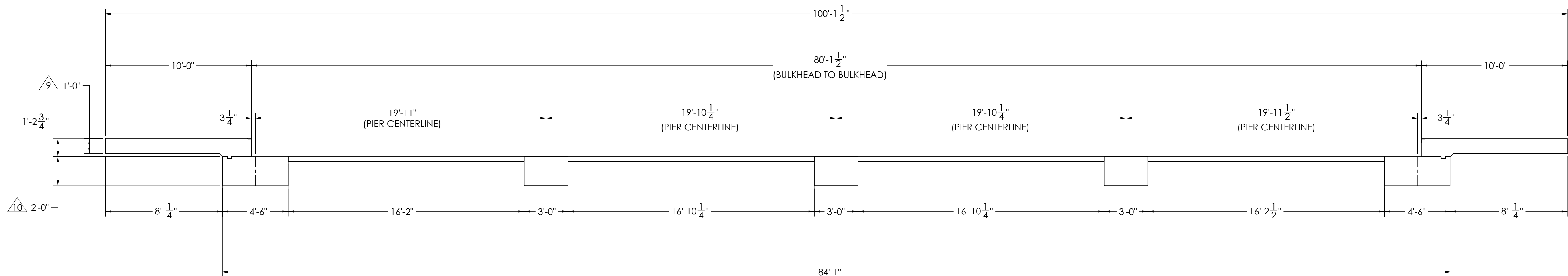
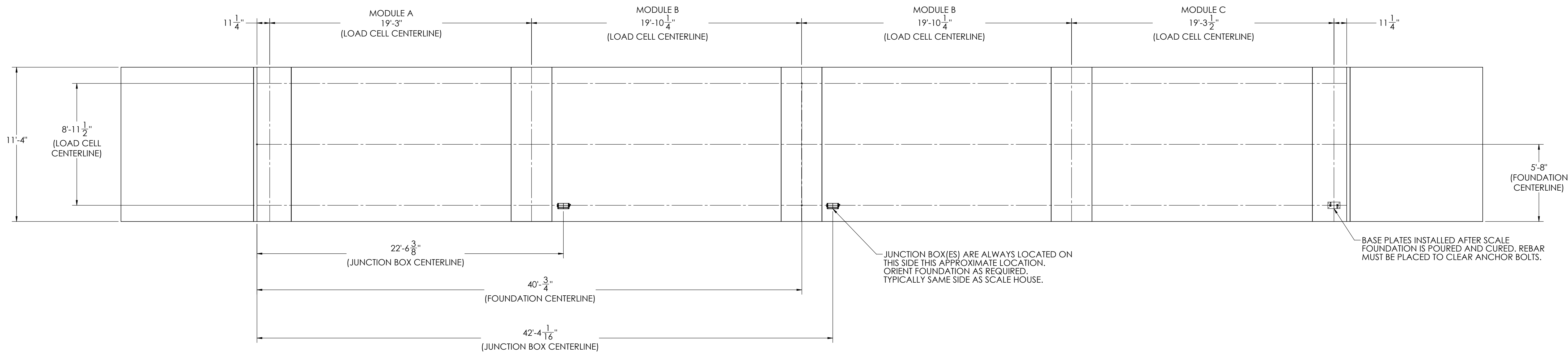


DETAILS

REVISION				
REV.	ECO	DESCRIPTION	INIT	DATE
A		ENGINEERING RELEASE	SPJ	07/06/2020







NOTES:

- 1) CONCRETE: F_C = 3000 PSI @ 28 DAYS.
- 2) REINFORCING STEEL: DEFORMED BARS ASTM A615 GRADE 60.
- 3) STATE AND LOCAL AGENCIES MAY HAVE VARIOUS REQUIREMENTS FOR APPROACH RAMP LENGTH, PITCH, AND FOR CLEAN OUT HEIGHT. PLEASE CHECK WITH ALL AGENCIES PRIOR TO CONSTRUCTION.
- 4) MONOLITHIC POUR IS ALLOWED AT CONTRACTOR'S DISCRETION.
- 5) DEVELOP AND MAINTAIN SITE GRADES WHICH WILL RAPIDLY DRAIN SURFACE AND ROOF RUN-OFF AWAY FROM FOUNDATION.
- 6) FOOTINGS HAVE BEEN DESIGNED FOR A MINIMUM SOIL PRESSURE OF 2500 PSF, IT WILL BE THE RESPONSIBILITY OF OTHERS TO VERIFY THIS VALUE.
- 7) WHERE REINFORCING BARS ARE SHOWN CONTINUOUS, LAP SPlice BARS 40 DIAMETERS
- 8) APPROACHES TO BE A COMMON PLANE WITHIN 1/4".

9. APPROACH THICKNESS MAY BE 10" MINIMUM WHERE ALLOWED BY STATE REGULATIONS.

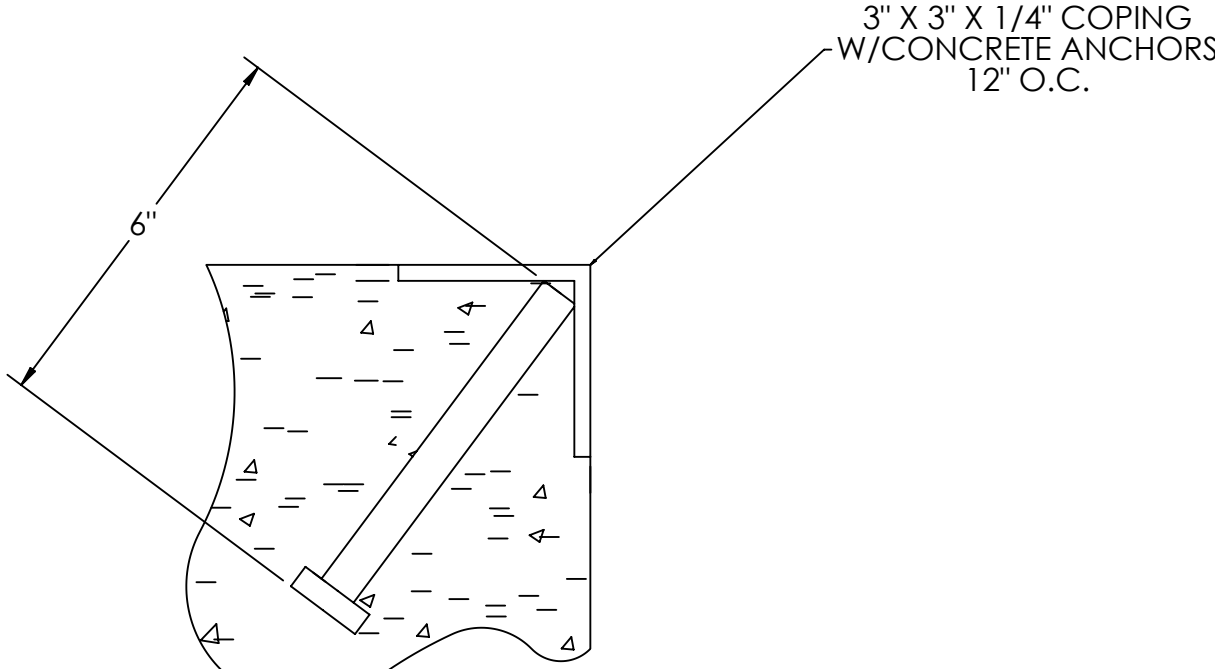
10. FOUNDATION MUST EXTEND A MINIMUM OF 12" BELOW THE FROST PENETRATION LINE

EXPIRATION DATE S. JOHNSON 07/06/2020		DRAWING DATE S. JOHNSON 07/06/2020		REVISION DATE S. JOHNSON 07/06/2020			
TREATMENT NONE		THIS DRAWING AND INFORMATION CONTAINED HEREIN IS AND REMAINS THE PROPERTY OF RICE LAKE WEIGHING SYSTEMS, INC. HEREINAFTER REFERRED TO AS "RICE LAKE". IT IS LOANED TO YOUR FIRM FOR YOUR PROPOSAL AND/OR USE BY YOUR CUSTOMER. IT SHALL NOT BE REPRODUCED, COPIED, COUNTERFEITED, OR IN ANY MANNER USED WITHOUT RICE LAKE'S WRITTEN CONSENT AND SHALL BE IMMEDIATELY RETURNED UPON REQUEST.		UNLESS OTHERWISE SPECIFIED UNITS SHALL BE INCHES. ALL THREADS TO BE CLASS 2. ALL DIMENSIONS APPLICABLE AFTER TREATMENT.			
NUMBER OF CRANES: 		TOLERANCES DRAWINGS - TOLERANCES UNLESS OTHERWISE SPECIFIED $.XX; \pm$ $.XXX; \pm$ \checkmark ANGLE: \pm		DESCRIPTION: FOUNDATION, CONCRETE PIER 80' X 11' OTR-LOPRO SERIES TRUCK SCALE			
MINIMUM CRANE CAPACITY: 		DO NOT SCALE SURFACE DRAWING		SCALE 1:45		SHEET 1 OF 3	
ESTIMATED WEIGHT (POUNDS) \checkmark				THIRD ANGLE PROJECTION 		MATERIAL 201841	
				FIN A		REV A	

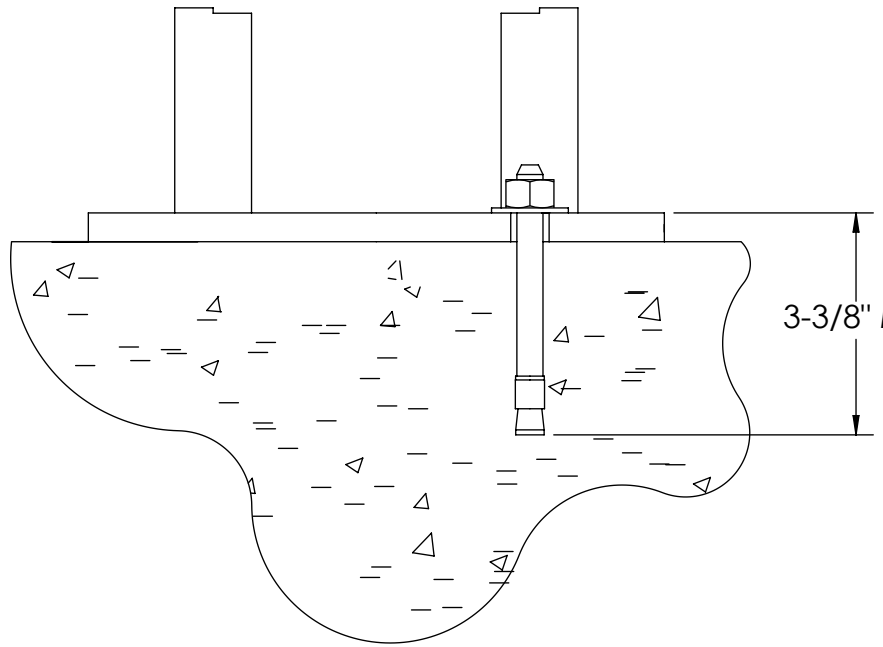
CONCRETE SCHEDULE			
		VOLUME (CUBIC YARDS)	
APPROACHES		8.8	
CLEANOUT		9.3	
PIERS		15.1	
TOTAL		33.2	
MISC. STEEL			
PIT COPING	3 X 3 X 1/4	23 LN.,FT	113 LBS

VOLUME SHOWN FOR STATED PIER DEPTH.
ADD ADDITIONAL CONCRETE FOR
DEEPER PIERS AS NEEDED.

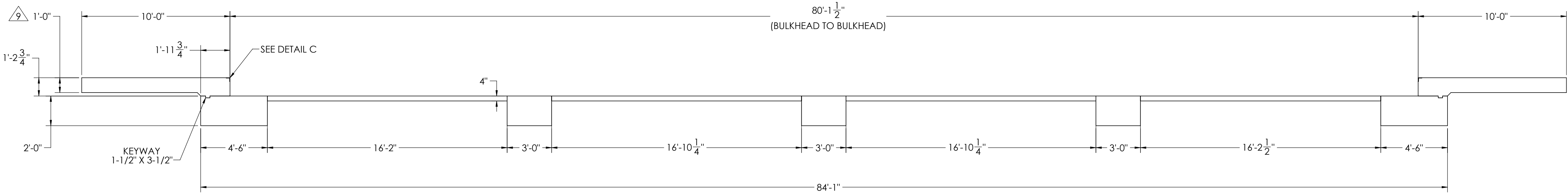
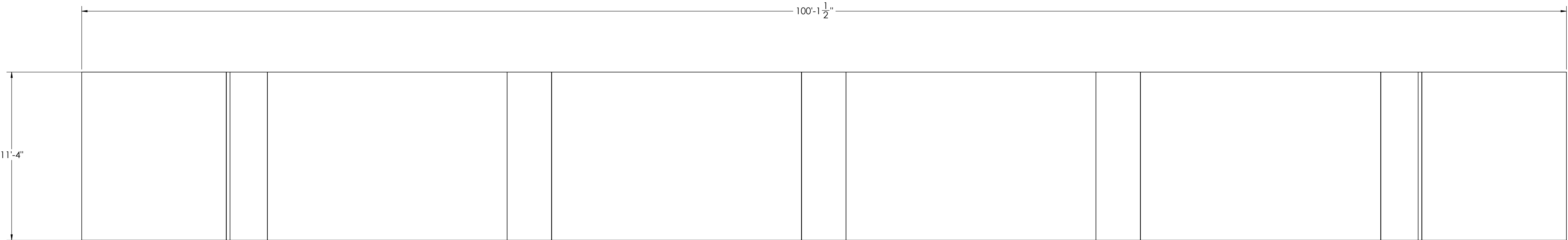
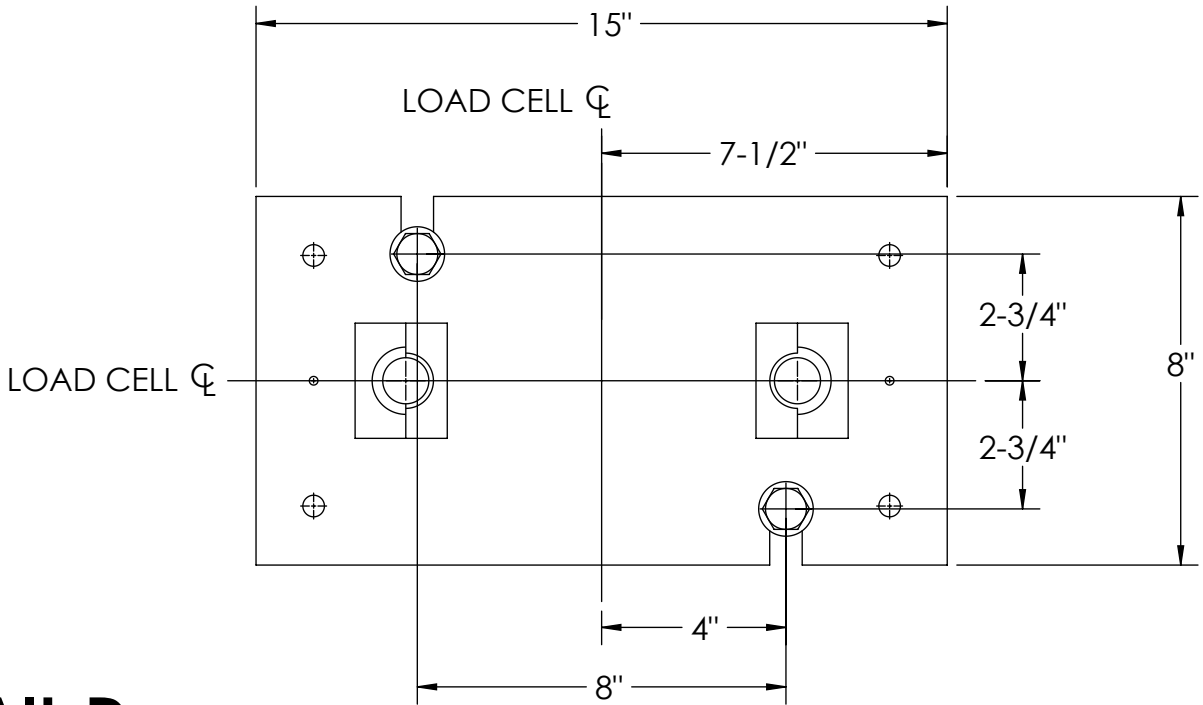
CONCRETE LAYOUT






DETAIL C

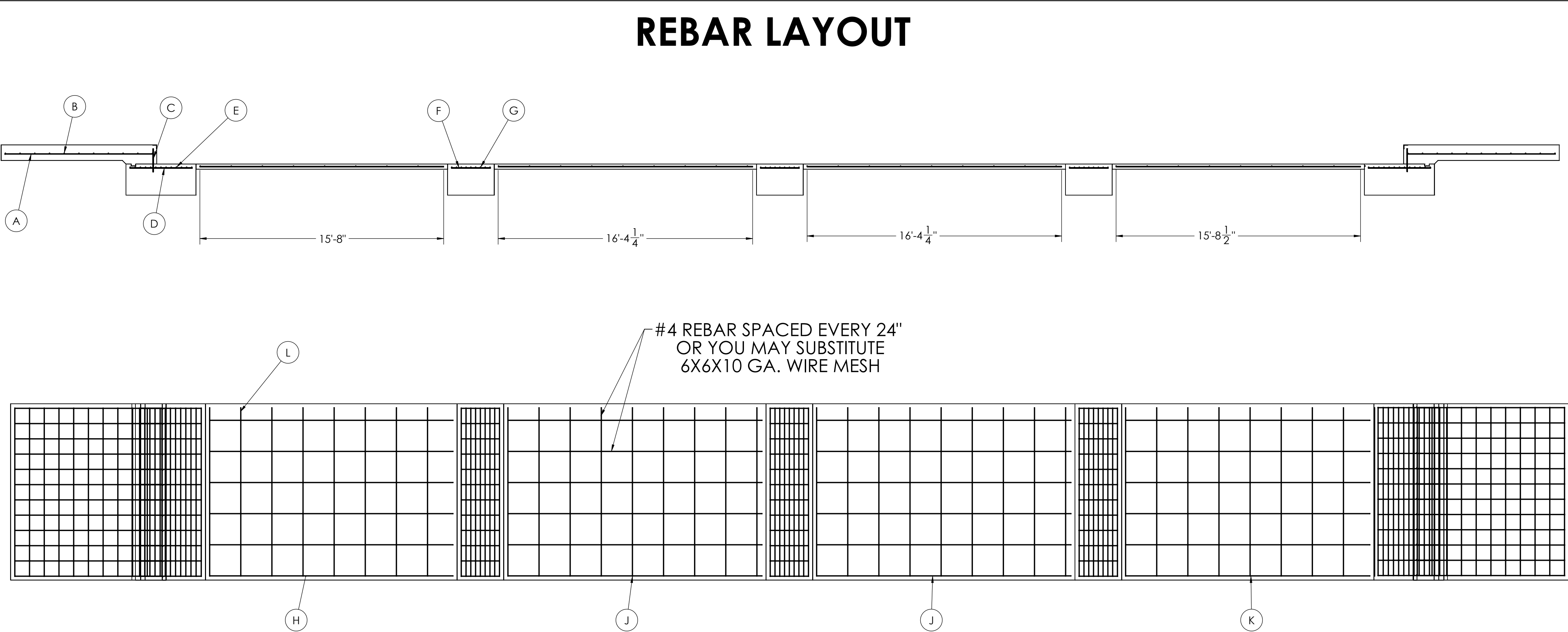


DETAIL D



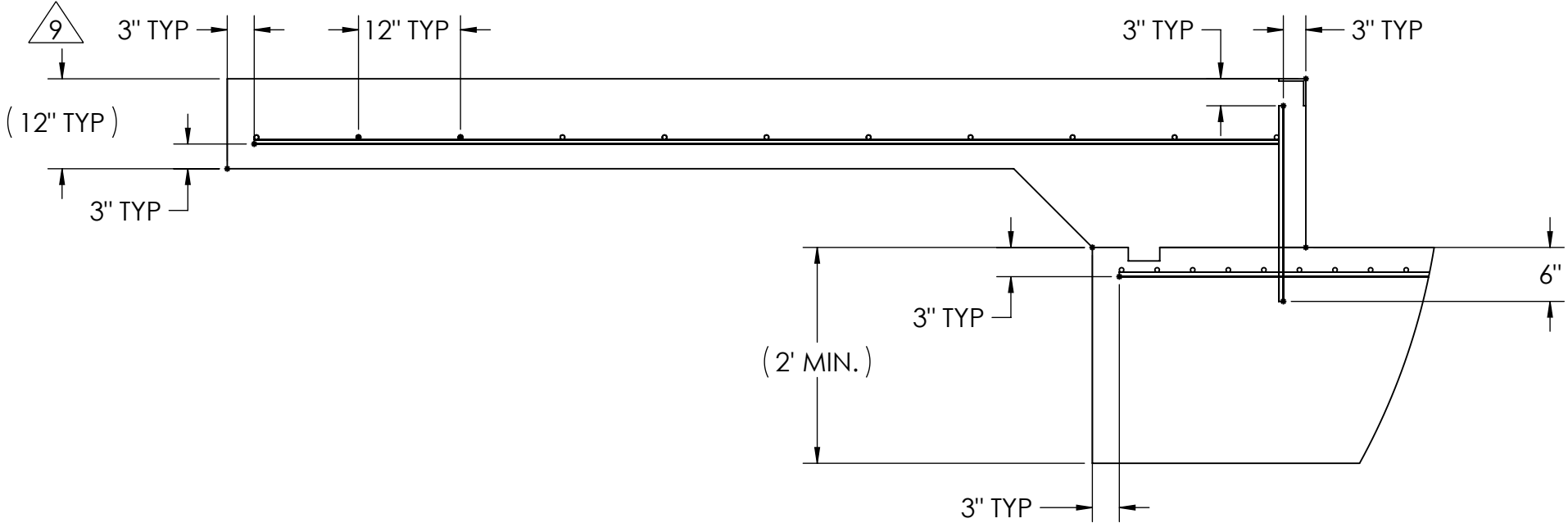
DESIGNED BY DATE S. JOHNSON 07/06/2020		DRAWN BY DATE S. JOHNSON 07/06/2020		PIER APPROVAL DATE S. JOHNSON 07/06/2020		
TREATMENT NONE		THIS DRAWING AND INFORMATION CONTAINED HEREIN IS AND REMAINS THE PROPERTY OF RICE LAKE WEIGHING SYSTEMS INC. HEREINAFTER REFERRED TO AS RLWS. IT MAY BE USED ONLY FOR RLWS' PROPOSAL AND/OR ITS CUSTOMER'S ORDERS. IT SHALL NOT BE DISCLOSED OR COPIED WITHOUT RLWS SPECIFIC WRITTEN CONSENT AND SHALL BE IMMEDIATELY RETURNED UPON REQUEST.		UNLESS OTHERWISE SPECIFIED UNITS TO BE INCHES ALL THREADS TO BE CLASS 2 ALL DIMENSIONS APPLICABLE AFTER TREATMENT		
NUMBER OF CRANES: MINIMUM CRANE CAPACITY: ESTIMATED WEIGHT (POUNDS):		 DO NOT SCALE DRAWING SURFACE FINISH ✓		TOLERANCES DRAWINGS TOLERANCES UNLESS OTHERWISE SPECIFIED .XX: .XXX: ANGLE:		FOUNDATION, CONCRETE PIER 80' X 11' OTR-LOPRO SERIES TRUCK SCALE
				SCALE 1:45 THIRD ANGLE PROJECTION 		
				SHEET 2 OF 3		MATERIAL 201841
				REV A		

MATERIAL REQUIRMENTS				
REBAR SCHEDULE				
BAL. NO.	QUANTITY	LENGTH (FT-IN.)	DESCRIPTION	WEIGHT
A	24	9' 6"	# 4 @ 12 O.C.	152
B	22	10' 10"	# 4 @ 12 O.C.	159
C	24	1' 5 3/4"	# 4 @ 12 O.C.	24
D	24	4' 0"	# 4 @ 12 O.C.	64
E	26	10' 10"	# 4 @ 4 O.C.	188
F	36	2' 6"	# 4 @ 12 O.C.	60
G	27	10' 10"	# 4 @ 4 O.C.	195
CLEANOUT SCHEDULE				
H	6	15' 8"	# 4 @ 24 O.C.	63
J	12	16' 6"	# 4 @ 24 O.C.	132
K	6	18' 8 1/2"	# 4 @ 24 O.C.	75
L	34	10' 10"	# 4 @ 24 O.C.	246
TOTAL WEIGHT OF REBAR (LBS.)				1359
TOTAL LENGTH OF REBAR (FT.)				2035
WIRE MESH	6 X 6-10 GA.			747 SQ FT

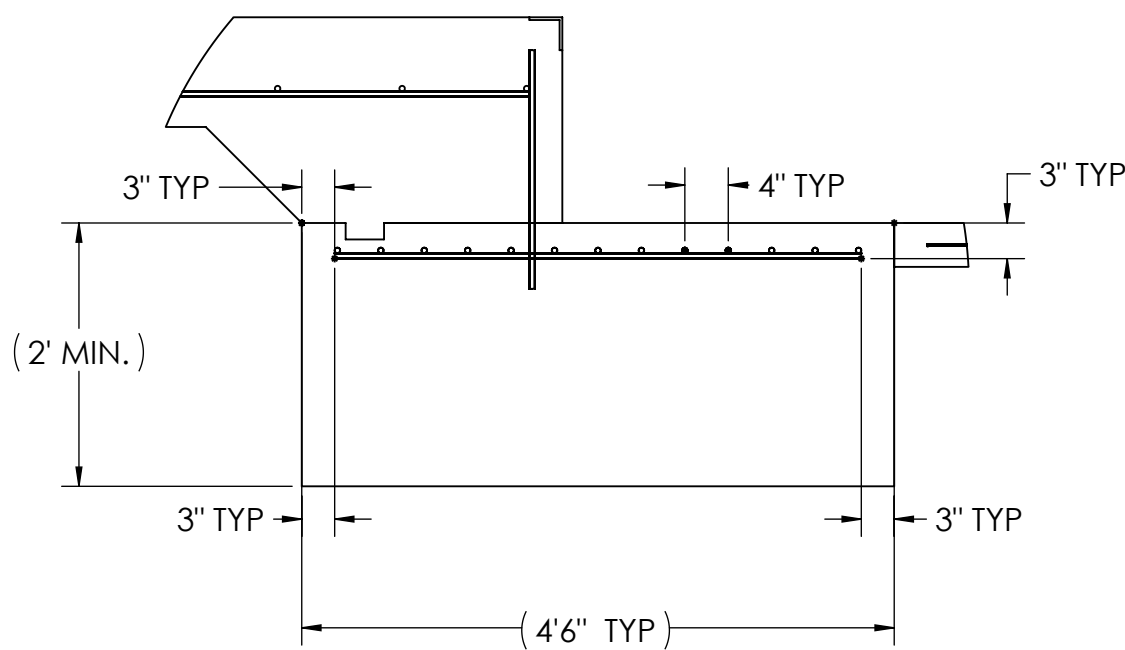


APPROACH STANDARD VIEWS

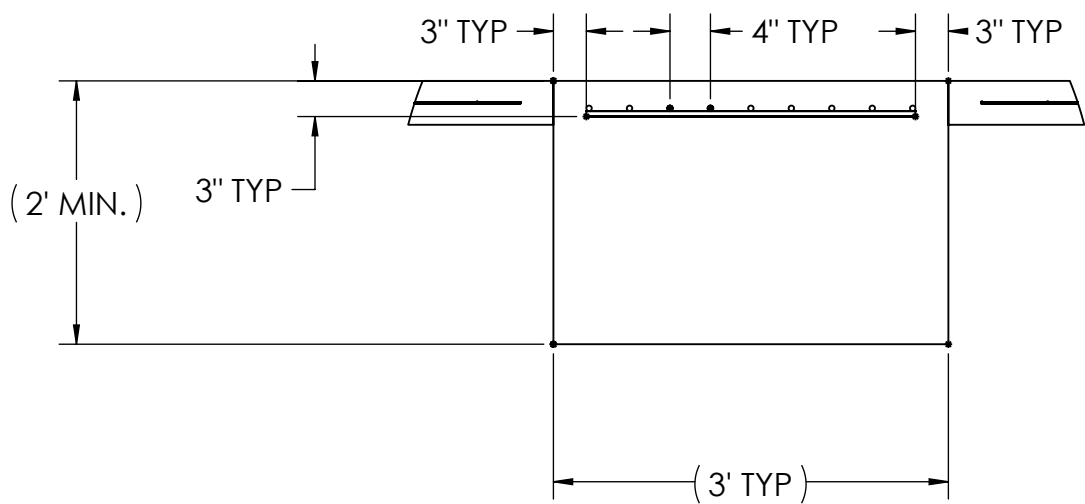
NOTES: 1) LEFT AND RIGHT APPROACHES ARE MIRROR IMAGES OF EACH OTHER AND CONTAIN AN IDENTICAL PART LIST



APPROACH PIER STANDARD VIEWS



PIER STANDARD VIEWS



DESIGNED BY: JAMES S. JOHNSON 07/06/2020		DRAWN BY: JAMES S. JOHNSON 07/06/2020		PIER APPROVAL: JAMES S. JOHNSON 07/06/2020		<div>THIS DRAWING AND INFORMATION CONTAINED HEREIN IS AND REMAINS THE PROPERTY OF RICE LAKE WEIGHING SYSTEMS INC. - HEREINAFTER REFERRED TO AS RLWS. IT MAY BE USED ONLY FOR RLWS' PROPOSAL AND/OR ITS CUSTOMER'S ORDERS. IT SHALL NOT BE DISCLOSED OR COPIED WITHOUT RLWS' SPECIFIC WRITTEN CONSENT AND SHALL BE IMMEDIATELY RETURNED UPON REQUEST.</div>
TREATMENT: NONE		TOLERANCES: DO NOT SCALE DRAWING SURFACE FINISH: .XX: ± .XXX: ± ANGLE: ±		UNLESS OTHERWISE SPECIFIED UNITS TO BE INCHES ALL THREADS TO BE CLASS 2 ALL DIMENSIONS APPLICABLE AFTER TREATMENT		<div>FOUNDATION, CONCRETE PIER 80' X 11' OTR-LOPRO SERIES TRUCK SCALE</div>
NUMBER OF CRANES: 1		MINIMUM CRANE CAPACITY: 10,000 LBS		ESTIMATED WEIGHT (POUNDS): 10,000 LBS		SCALE: 1:48 SHEET: 3 OF 3 MATERIAL: 201841
THIRD ANGLE PROJECTION: YES		REV: A				