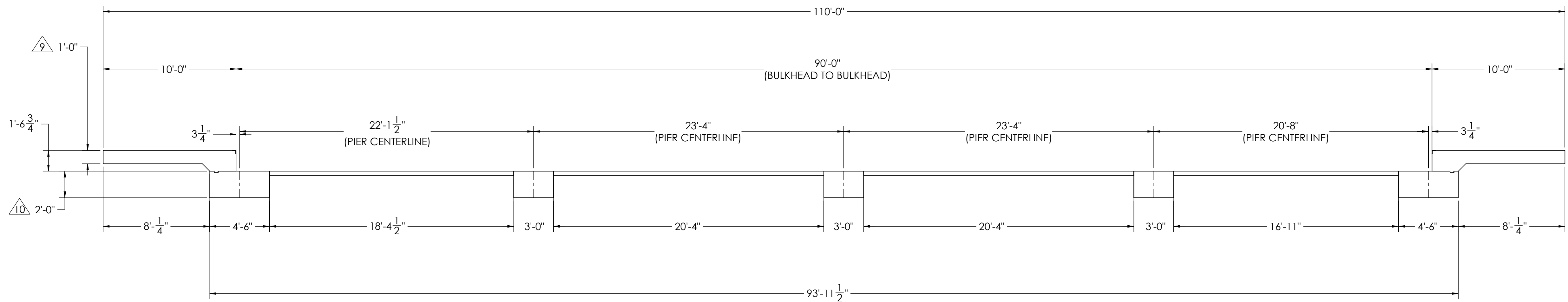
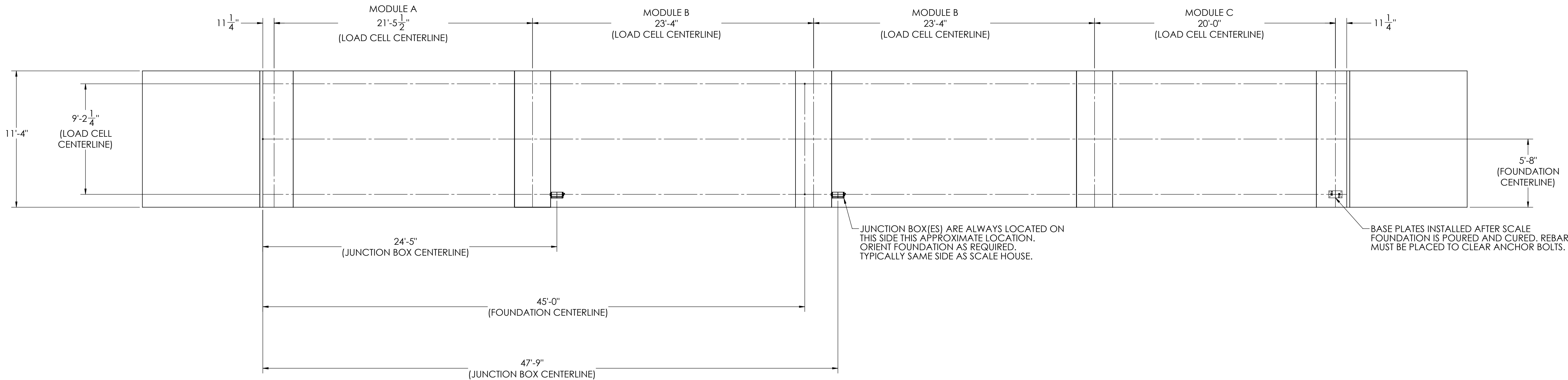


DETAILS

REVISION				
REV.	ECO	DESCRIPTION	INIT	DATE
A		ENGINEERING RELEASE	SPJ	08/11/2020






NOTES:

- 1) CONCRETE: f'c = 3000 PSI @ 28 DAYS.
- 2) REINFORCING STEEL: DEFORMED BARS ASTM A615 GRADE 60.
- 3) STATE AND LOCAL AGENCIES MAY HAVE VARIOUS REQUIREMENTS FOR APPROACH RAMP LENGTH, PITCH, AND FOR CLEAN OUT HEIGHT. PLEASE CHECK WITH ALL AGENCIES PRIOR TO CONSTRUCTION.
- 4) MONOLITHIC POUR IS ALLOWED AT CONTRACTOR'S DISCRETION.
- 5) DEVELOP AND MAINTAIN SITE GRADES WHICH WILL RAPIDLY DRAIN SURFACE AND ROOF RUN-OFF AWAY FROM FOUNDATION.
- 6) FOOTINGS HAVE BEEN DESIGNED FOR A MINIMUM SOIL PRESSURE OF 2500 PSF. IT WILL BE THE RESPONSIBILITY OF OTHERS TO VERIFY THIS VALUE.
- 7) WHERE REINFORCING BARS ARE SHOWN CONTINUOUS, LAP SPLICE BARS 40 DIAMETERS.
- 8) APPROACHES TO BE A COMMON PLANE WITHIN 1/4".

9. APPROACH THICKNESS MAY BE 10" MINIMUM WHERE ALLOWED BY STATE REGULATIONS

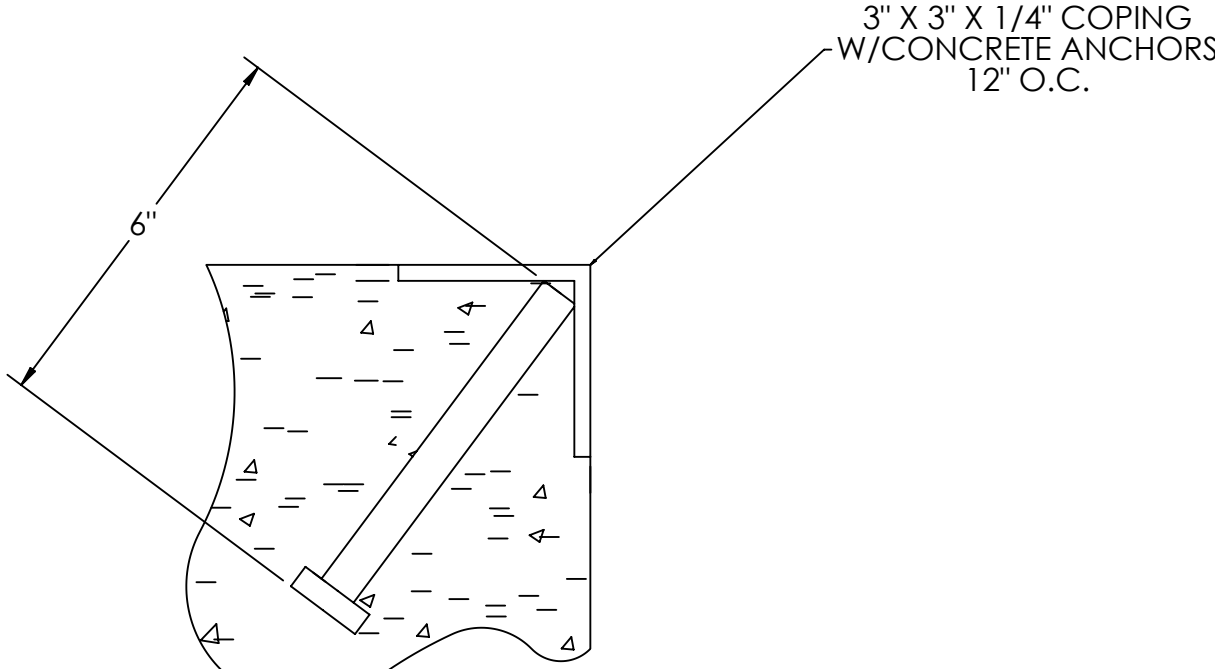
10. FOUNDATION MUST EXTEND A MINIMUM OF 12" BELOW THE FROST PENETRATION LINE

DESIGNED BY DATE S. JOHNSON 08/11/2020		DRAWN BY DATE S. JOHNSON 08/11/2020		FREE APPROVAL DATE S. JOHNSON 08/11/2020			
TREATMENT NONE		THIS DRAWING AND INFORMATION CONTAINED HEREIN IS AND REMAINS THE PROPERTY OF RICE LAKE WEIGHING SYSTEMS, INC. HEREINAFTER REFERRED TO AS "RLS". IT IS TO BE USED ONLY FOR RULWS' PROPOSAL AND/OR ITS CUSTOMER'S CONSTRUCTION. IT SHALL NOT BE REPRODUCED OR COPIED WITHOUT RLS'S SPECIFIC WRITTEN CONSENT AND SHALL BE IMMEDIATELY RETURNED UPON REQUEST.		UNLESS OTHERWISE SPECIFIED, ALL UNITS TO BE RULWS' ALL DIMENSIONS APPLICABLE AFTER TREATMENT.			
NUMBER OF CIRCLES:		TOLERANCES DO NOT SCALE DRAWING SURFACE FINISH .XX: ± .XXX: ± ✓ ANGLE: ±		DESCRIPTION FOUNDATION, CONCRETE PIER 90' X 11' OTR SERIES TRUCK SCALE			
MINIMUM CRANE CAPACITY:		UNLESS OTHERWISE SPECIFIED		SCALE: 1:55 SHEET: 1 OF 3 MATERIAL:			
ESTIMATED WEIGHT (POUNDS):						202386	
						REV A	

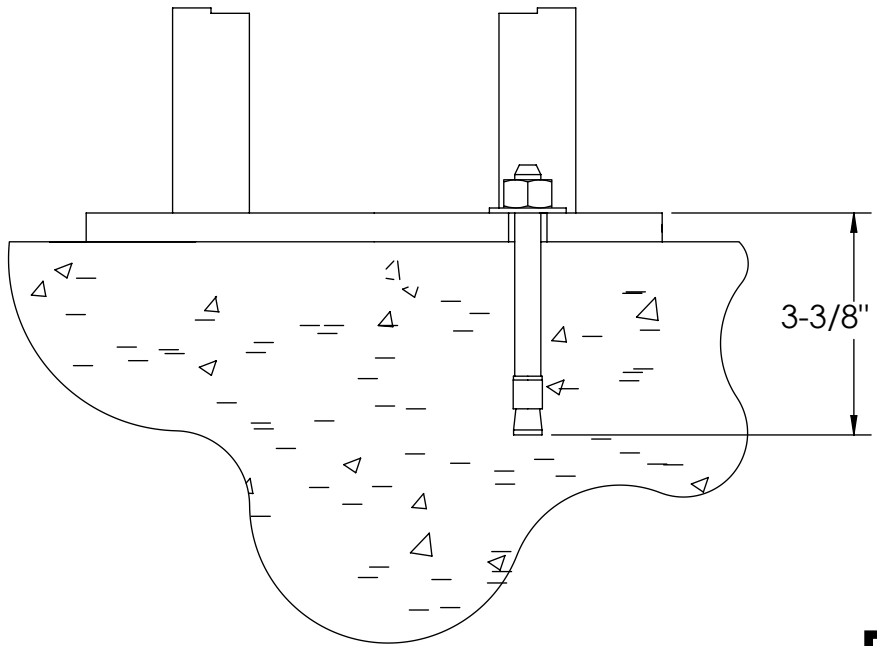
CONCRETE SCHEDULE			
		VOLUME (CUBIC YARDS)	
APPROACHES		9.5	
CLEANOUT		10.7	
PIERS		15.1	
TOTAL		35.3	
MISC. STEEL			
PIT COPING	3 X 3 X 1/4	23 LN .FT	113 LBS

VOLUME SHOWN FOR STATED PIER DEPTH.
ADD ADDITIONAL CONCRETE FOR
DEEPER PIERS AS NEEDED.

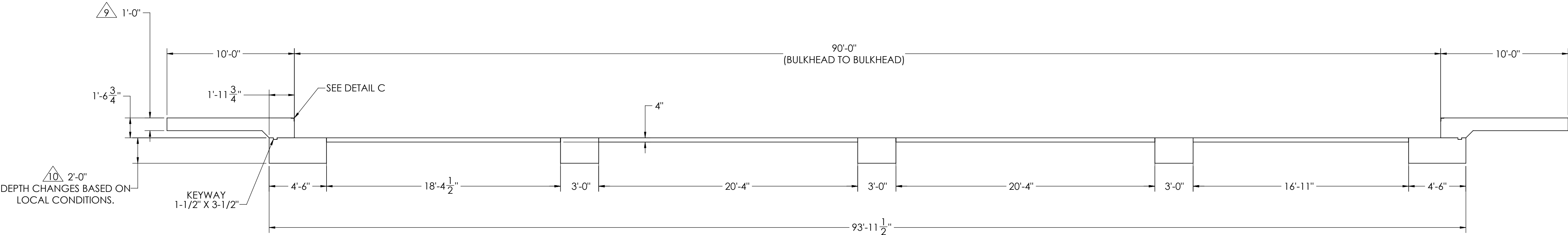
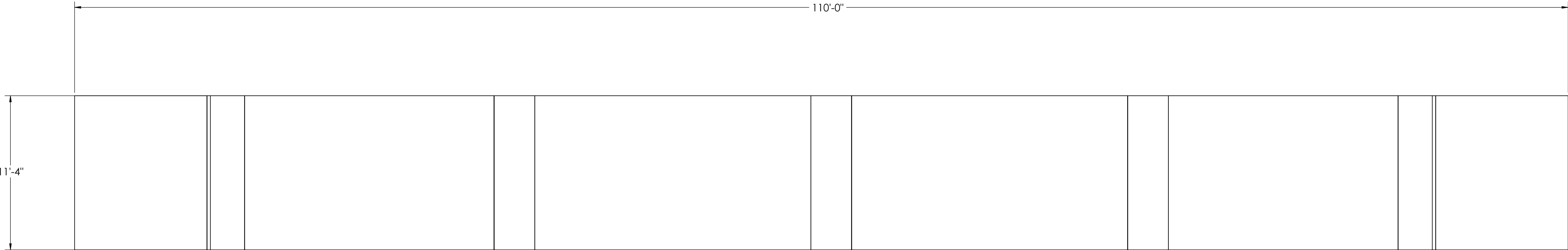
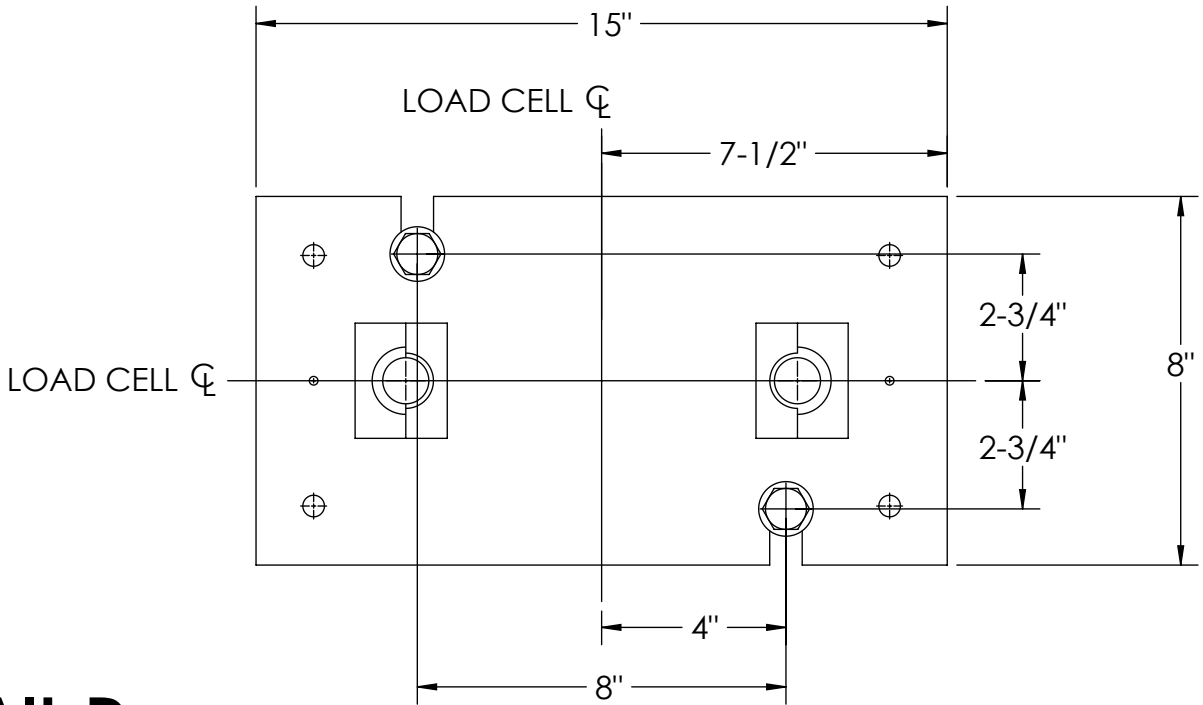
CONCRETE LAYOUT



DETAIL C



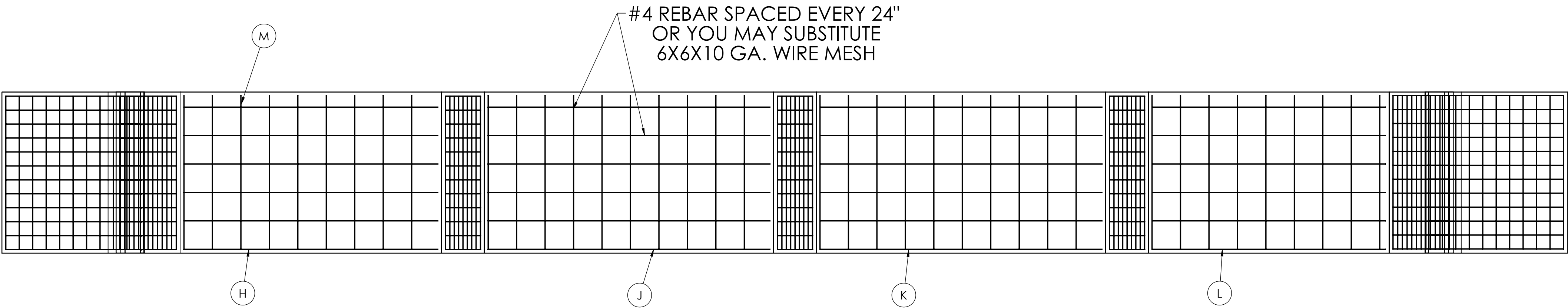
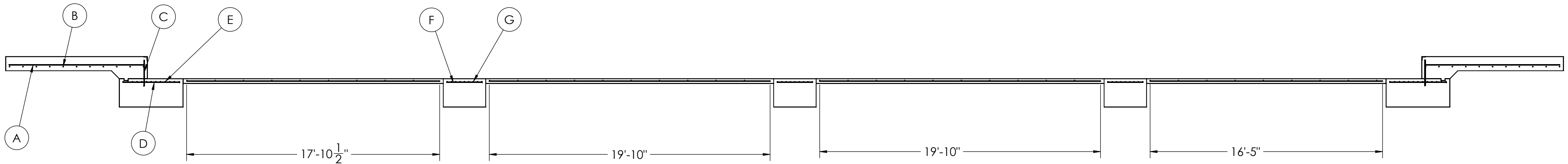
DETAIL D



DESIGNED BY: JGMS S. JOHNSON 08/11/2020	DRAWN BY: JGMS S. JOHNSON 08/11/2020	PIER APPROVAL DATE S. JOHNSON 08/11/2020	RICE LAKE WEIGHING SYSTEMS	
TREATMENT NONE	THIS DRAWING AND INFORMATION CONTAINED HEREIN IS AND REMAINS THE PROPERTY OF RICE LAKE WEIGHING SYSTEMS INC. - HEREINAFTER REFERRED TO AS RLWS. IT MAY BE USED ONLY FOR RLWS' PROPOSAL AND/OR ITS CUSTOMER'S ORDERS. IT SHALL NOT BE DISCLOSED OR COPIED WITHOUT RLWS' SPECIFIC WRITTEN CONSENT AND SHALL BE IMMEDIATELY RETURNED UPON REQUEST.	UNLESS OTHERWISE SPECIFIED UNITS TO BE INCHES ALL THREADS TO BE CLASS 2 ALL DIMENSIONS APPLICABLE AFTER TREATMENT	DESCRIPTION FOUNDATION, CONCRETE PIER 90' X 11'	
NUMBER OF CRANES: MINIMUM CRANE CAPACITY: ESTIMATED WEIGHT (POUNDS)	DO NOT SCALE DRAWING SURFACE FINISH TOLERANCES DRAWINGS TOLERANCES UNLESS OTHERWISE SPECIFIED .XX: .XXX: ANGLE:	SCALE 1:55	SHEET 2 OF 3	MATERIAL
THIRD ANGLE PROJECTION		202386		REV. A

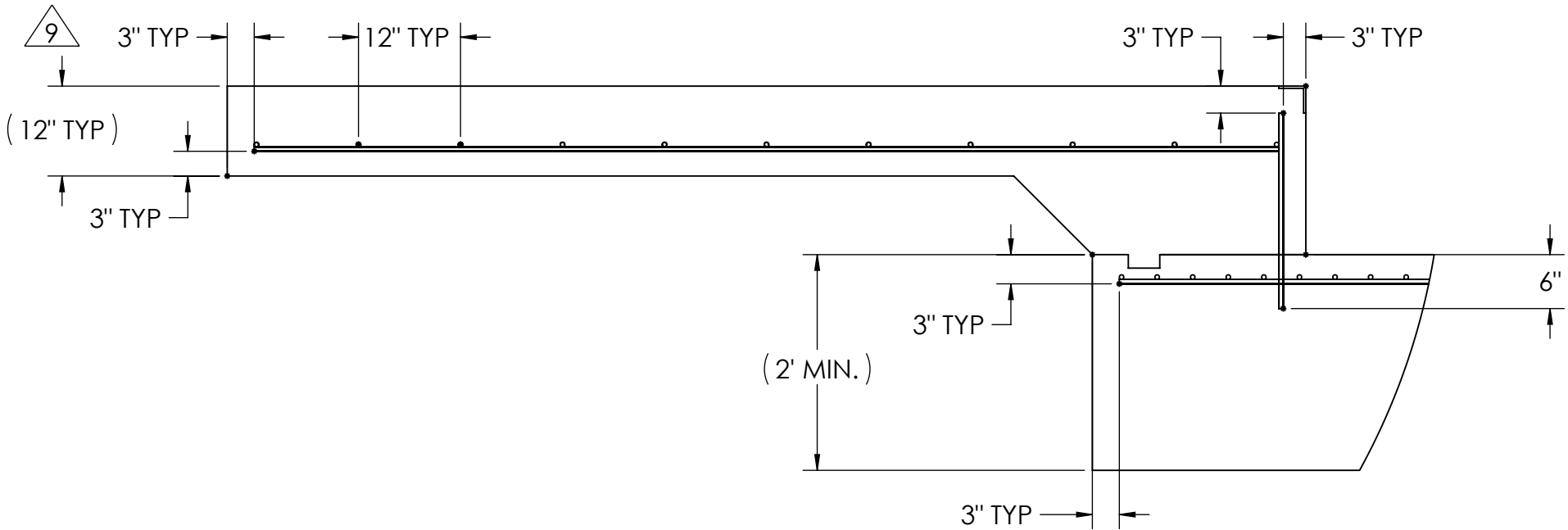
MATERIAL REQUIREMENTS					
REBAR SCHEDULE					
BAL. NO.	QUANTITY	LENGTH (FT.-IN.)	DESCRIPTION	WEIGHT	
A	24	9' 6"	# 4 @ 12 O.C.	152	
B	22	10' 10"	# 4 @ 12 O.C.	159	
C	24	1'9 3/4"	# 4 @ 12 O.C.	29	
D	24	4' 0"	# 4 @ 12 O.C.	64	
E	26	10' 10"	# 4 @ 4 O.C.	188	
F	36	2' 6"	# 4 @ 12 O.C.	60	
G	27	10' 10"	# 4 @ 4 O.C.	195	
CLEANOUT SCHEDULE					
H	6	17' 10 1/2"	# 4 @ 24 O.C.	72	
I	6	19' 10"	# 4 @ 24 O.C.	79	
K	6	19' 10"	# 4 @ 24 O.C.	79	
L	6	16' 5"	# 4 @ 24 O.C.	66	
M	38	10' 10"	# 4 @ 24 O.C.	275	
TOTAL WEIGHT OF REBAR (LBS.)				1420	
TOTAL LENGTH OF REBAR (FT.)				1125	
WIRE MESH		6 X 6-10 GA.		838 SQ FT	

REBAR LAYOUT

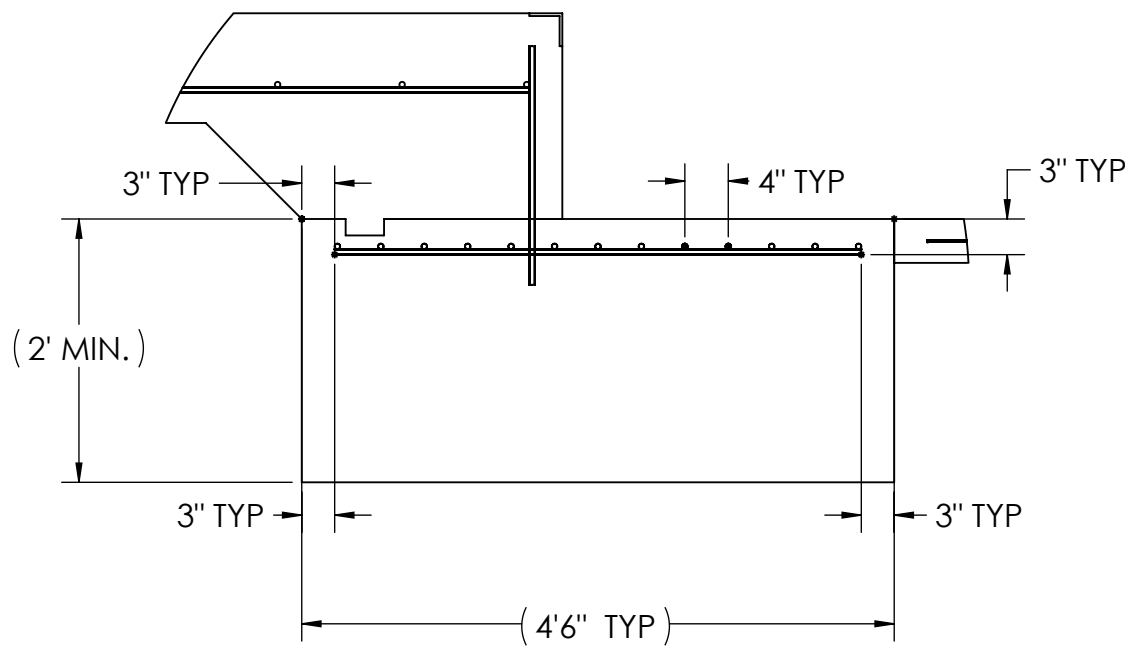


APPROACH STANDARD VIEWS

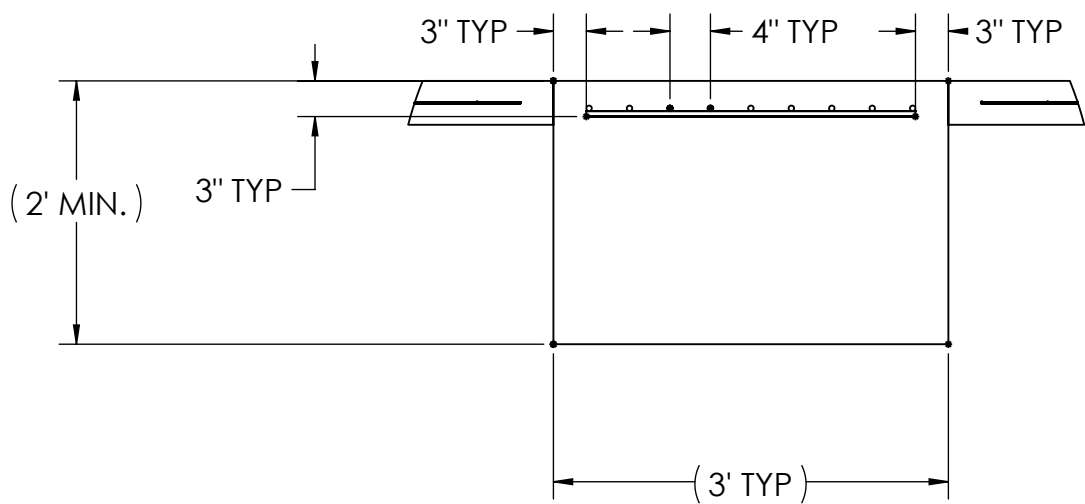
NOTES: 1) LEFT AND RIGHT APPROACHES ARE MIRROR IMAGES OF EACH OTHER AND CONTAIN AN IDENTICAL PART LIST






APPROACH PIER STANDARD VIEWS



PIER STANDARD VIEWS



DESIGNED BY DATE S. JOHNSON 08/11/2020		DRAWN BY DATE S. JOHNSON 08/11/2020		FIELD OPERATOR DATE S. JOHNSON 08/11/2020			
TREATMENT NONE		THIS DRAWING AND INFORMATION CONTAINED HEREIN IS AND REMAINS THE PROPERTY OF RICE LAKE WEIGHING SYSTEMS INC. HEREINAFTER REFERRED TO AS RICE LAKE. IT MAY BE USED FOR THE RUMS' PROPOSAL AND/OR FOR ITS CUSTOMER'S INFORMATION. IT SHALL NOT BE REPRODUCED OR COPIED WITHOUT RICE LAKE'S SPECIFIC WRITTEN CONSENT AND SHALL BE IMMEDIATELY RETURNED UPON REQUEST.		UNLESS OTHERWISE SPECIFIED UNITS TO BE IN INCHES. ALL THREADS TO BE CLASS 2 ALL DIMENSIONS APPLICABLE AFTER TREATMENT			
NUMBER OF CRANES 1		 DO NOT SCALE DRAWING SURFACE FINISH ✓ ANGLE: ±		TOLERANCES DRAWING TOLERANCES UNLESS OTHERWISE SPECIFIED .XX; ± .XXX; ± ANGLE: ±		DESCRIPTION FOUNDATION, CONCRETE PIER 90' x 11' OTR SERIES TRUCK SCALE	
MINIMUM CRANE CAPACITY 100,000 LBS		SCALE 1:48		SHEET 3 OF 3		MATERIAL	
ESTIMATED WEIGHT (POUNDS) 100,000 LBS		 BEARING/ANGLE PROJECTION		P/N 202386		REV A	