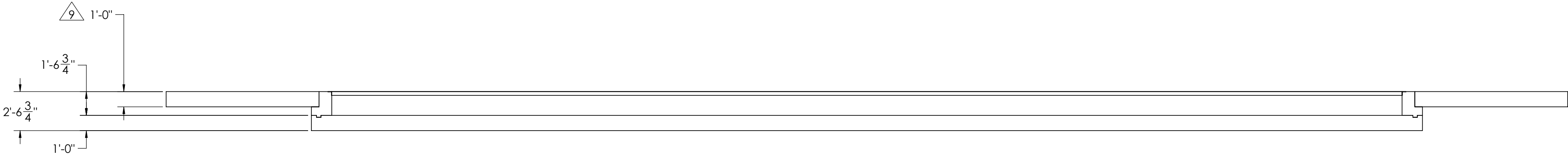
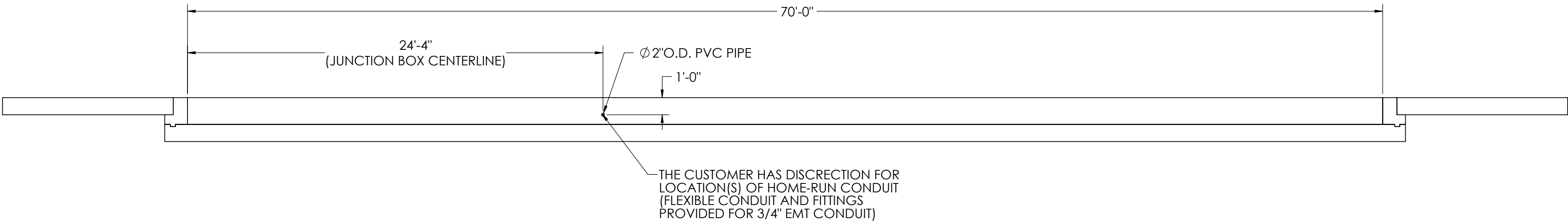
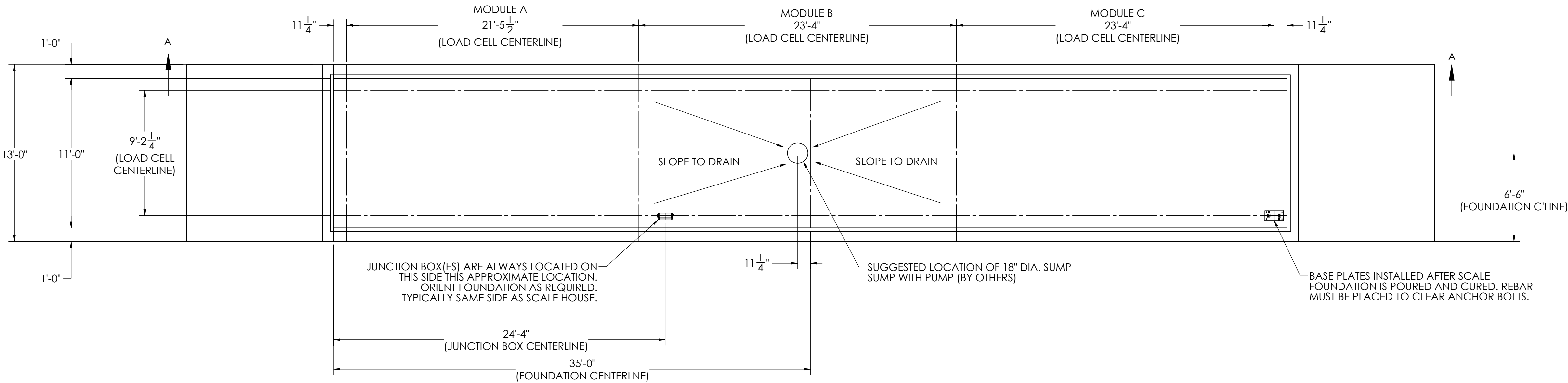


DETAILS

REVISION				
REV.	ECO	DESCRIPTION	INIT	DATE
A		ENGINEERING RELEASE	SPJ	09/30/2020



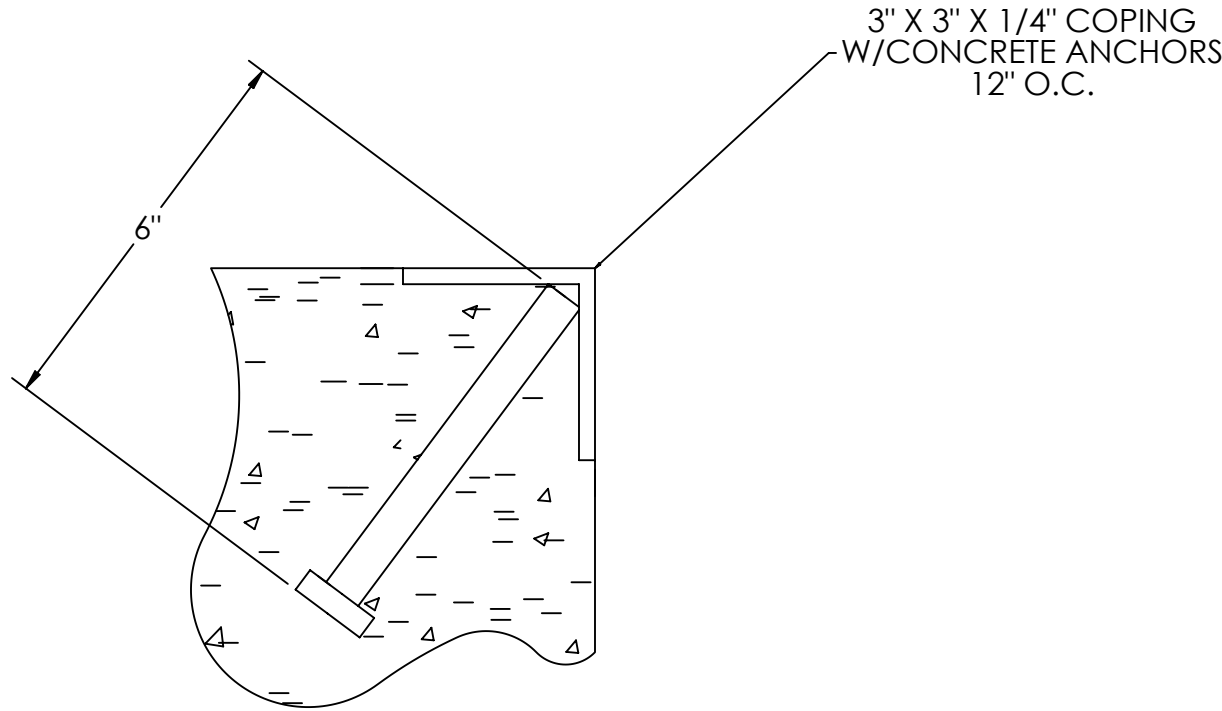
NOTES:

- 1) CONCRETE: f'c = 3500 PSI @ 28 DAYS.
- 2) REINFORCING STEEL: DEFORMED BARS ASTM A615 GRADE 60.
- 3) STATE AND LOCAL AGENCIES MAY HAVE VARIOUS REQUIREMENTS FOR APPROACH RAMP LENGTH, PITCH, AND FOR CLEAN OUT HEIGHT. PLEASE CHECK WITH ALL AGENCIES PRIOR TO CONSTRUCTION.
- 4) MONOLITHIC POUR OF SLAB AND PIERS IS ALLOWED AT CONTRACTOR'S DISCRETION.
- 5) DEVELOP AND MAINTAIN SITE GRADES WHICH WILL RAPIDLY DRAIN SURFACE AND ROOF RUN-OFF AWAY FROM FOUNDATION.
- 6) FOOTINGS HAVE BEEN DESIGNED FOR A MINIMUM SOIL PRESSURE OF 3000 PSF, IT WILL BE THE RESPONSIBILITY OF OTHERS TO VERIFY THIS VALUE.
- 7) WHERE REINFORCING BARS ARE SHOWN CONTINUOUS, LAP SPLICE BARS 40 DIAMETERS.
- 8) APPROACHES TO BE A COMMON PLANE WITHIN 1/4".
- 9) APPROACH THICKNESS MAY BE 10" MINIMUM WHERE ALLOWED BY STATE REGULATIONS

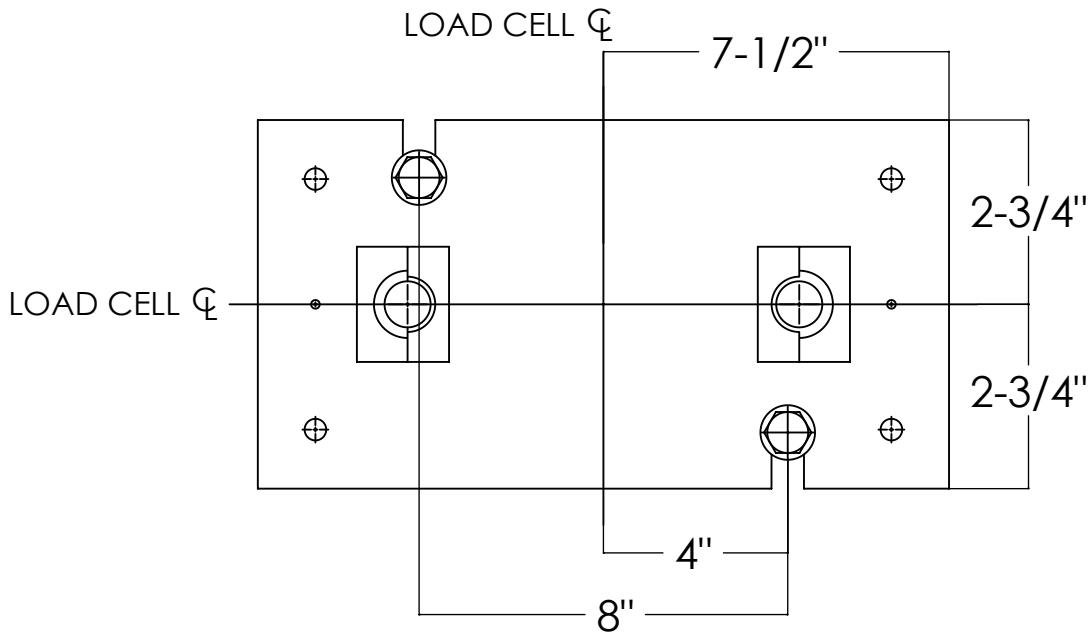
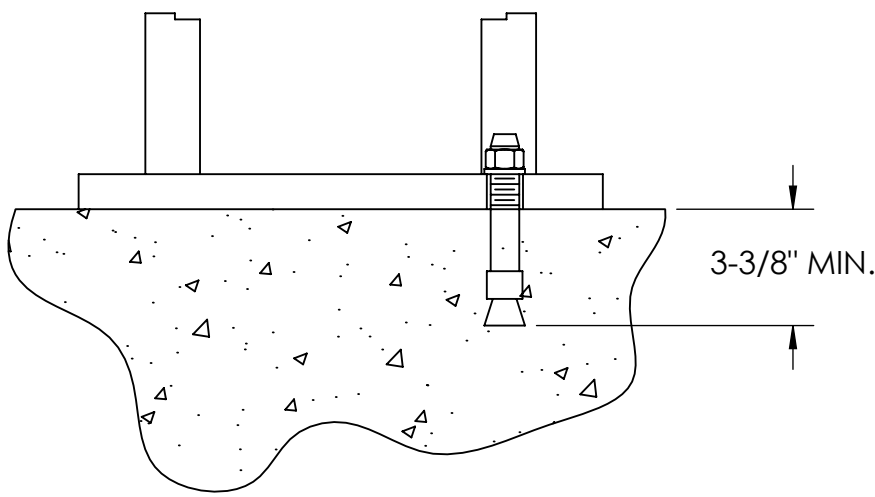
DESIGNED BY: JGMS S. JOHNSON 09/29/2020	DRAWN BY: JGMS S. JOHNSON 09/29/2020	FIELD APPROVAL: DATE S. JOHNSON 09/29/2020	RICE LAKE WEIGHING SYSTEMS	
TREATMENT NONE	THIS DRAWING AND INFORMATION CONTAINED HEREIN IS AND REMAINS THE PROPERTY OF RICE LAKE WEIGHING SYSTEMS INC. - HEREINAFTER REFERRED TO AS RLWS. IT MAY BE USED ONLY FOR RLWS' PROPOSAL AND/OR ITS CUSTOMER'S ORDERS. IT SHALL NOT BE DISCLOSED OR COPIED WITHOUT RLWS' SPECIFIC WRITTEN CONSENT AND SHALL BE IMMEDIATELY RETURNED UPON REQUEST.	UNLESS OTHERWISE SPECIFIED UNITS TO BE INCHES ALL THREADS TO BE CLASS 2 ALL DIMENSIONS APPLICABLE AFTER TREATMENT	DESCRIPTION FOUNDATION, CONCRETE PIT 70FT X 11FT OTR SERIES 18.75IN DEEP PIT, OPTIMIZED	
NUMBER OF CRANES: MINIMUM CRANE CAPACITY: ESTIMATED WEIGHT (POUNDS):	DO NOT SCALE DRAWING SURFACE FINISH TOLERANCES DRAWING TOLERANCES UNLESS OTHERWISE SPECIFIED .XX: ± .XXX: ± ANGLE: ±	SCALE 1:55 SHEET 1 OF 3 MATERIAL THIRD ANGLE PROJECTION P/N	203052 REV A	

CONCRETE SCHEDULE			
		VOLUME (CUBIC YARDS)	
APPROACHES		9.6	
FLOOR		65.0	
WALLS		9.7	
TOTAL		84.2	
MISC. STEEL			
PIT COPING	3 X 3 X 1/4	185 LN .FT	907 LBS

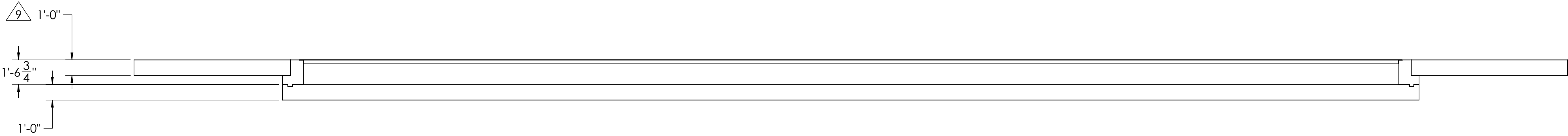
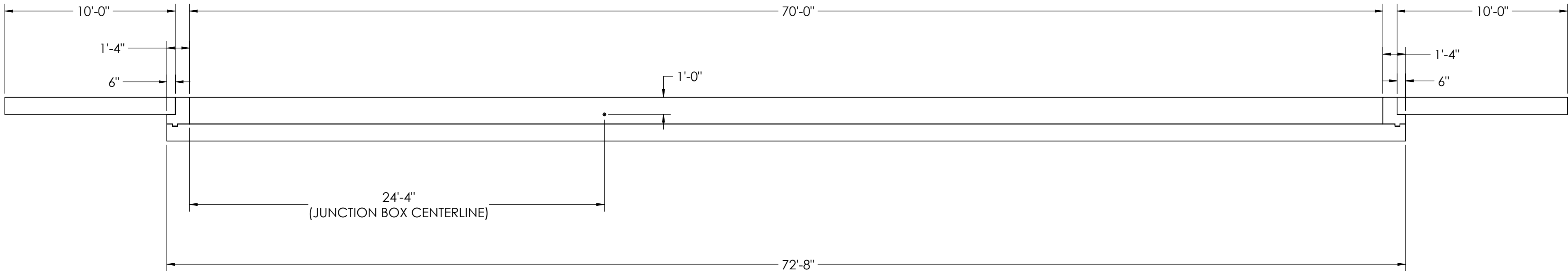
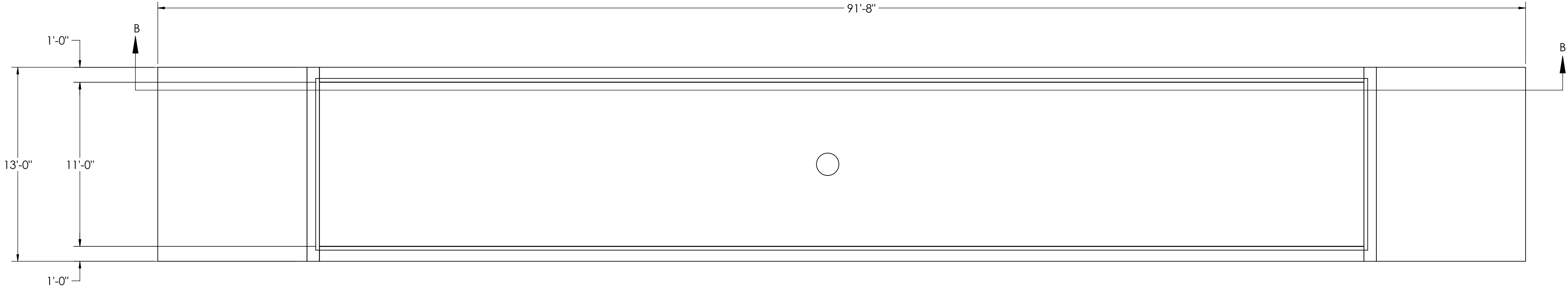
CONCRETE LAYOUT



DETAIL C



DETAIL D

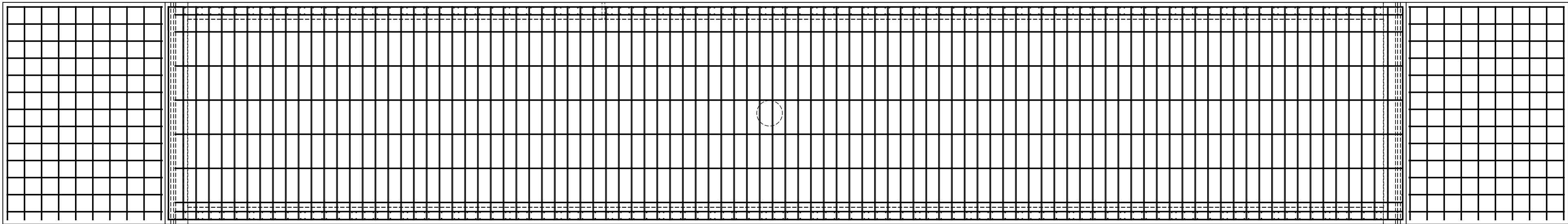
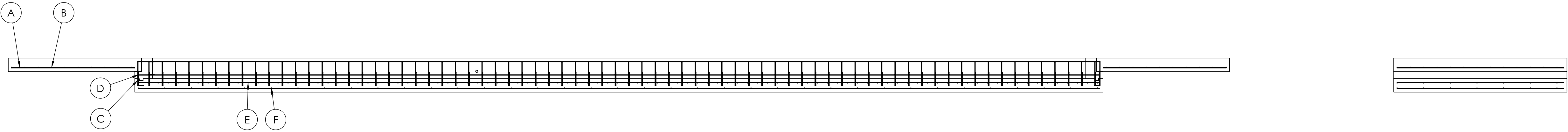


SECTION B-B

DESIGNED BY: JGMS S. JOHNSON 09/29/2020	DRAWN BY: JGMS S. JOHNSON 09/29/2020	FIELD APPROVAL: JGMS S. JOHNSON 09/29/2020	RICE LAKE WEIGHING SYSTEMS	
TREATMENT NONE	THIS DRAWING AND INFORMATION CONTAINED HEREIN IS AND REMAINS THE PROPERTY OF RICE LAKE WEIGHING SYSTEMS INC. - HEREINAFTER REFERRED TO AS RLWS. IT MAY BE USED ONLY FOR RLWS' PROPOSAL AND/OR ITS CUSTOMER'S ORDERS. IT SHALL NOT BE DISCLOSED OR COPIED WITHOUT RLWS SPECIFIC WRITTEN CONSENT AND SHALL BE IMMEDIATELY RETURNED UPON REQUEST.	UNLESS OTHERWISE SPECIFIED UNITS TO BE INCHES ALL THREADS TO BE CLASS 2 ALL DIMENSIONS APPLICABLE AFTER TREATMENT	DESCRIPTION FOUNDATION, CONCRETE PIT 70FT X 11FT OTR SERIES 18.75IN DEEP PIT, OPTIMIZED	
NUMBER OF CRANES: MINIMUM CRANE CAPACITY: ESTIMATED WEIGHT (POUNDS)	DO NOT SCALE DRAWING SURFACE FINISH ✓	TOLERANCES DRAWING TOLERANCES UNLESS OTHERWISE SPECIFIED .XX: .XXX: ANGLE:	SCALE 1:64	SHEET 2 OF 3
THIRD ANGLE PROJECTION			DATE 203052	REV. A

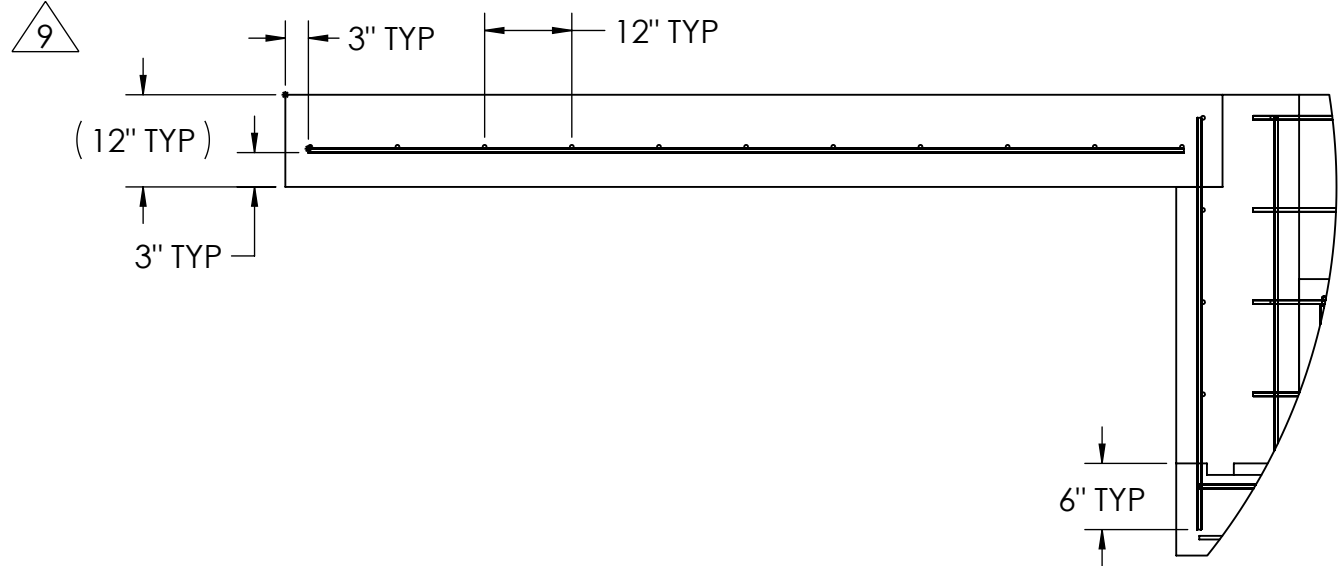
MATERIAL REQUIREMENTS				
REBAR SCHEDULE				
BAL. NO.	QUANTITY	LENGTH (FT-IN.)	DESCRIPTION	WEIGHT
A	26	9' 1"	# 4 @ 12 O.C.	158
B	20	12' 6"	# 4 @ 12 O.C.	167
C	148	1' 10"	# 4 @ 16 O.C.	181
D	4	12' 6"	# 4 @ 12 O.C.	33
E	97	12' 6"	# 4 @ 9 O.C.	810
F	37	12' 6"	# 4 @ 24 O.C.	309
G	7	72' 2"	# 4 @ 24 O.C.	337
N	148	1' 10"	# 4 @ 12 O.C.	181
P	4	71' 0"	# 4 @ 12 O.C.	190
Q	4	71' 0"	# 4 @ 12 O.C.	190
R	4	12' 6"	# 4 @ 12 O.C.	33
S	7	72' 2"	# 4 @ 24 O.C.	337
T	162	1' 5"	# 5 @ 12 O.C.	239
U	8	2' 0"	# 5 @ 12 O.C.	17
TOTAL WEIGHT OF REBAR (LBS.)				3183
TOTAL LENGTH OF REBAR (FT.)				4628

REBAR LAYOUT



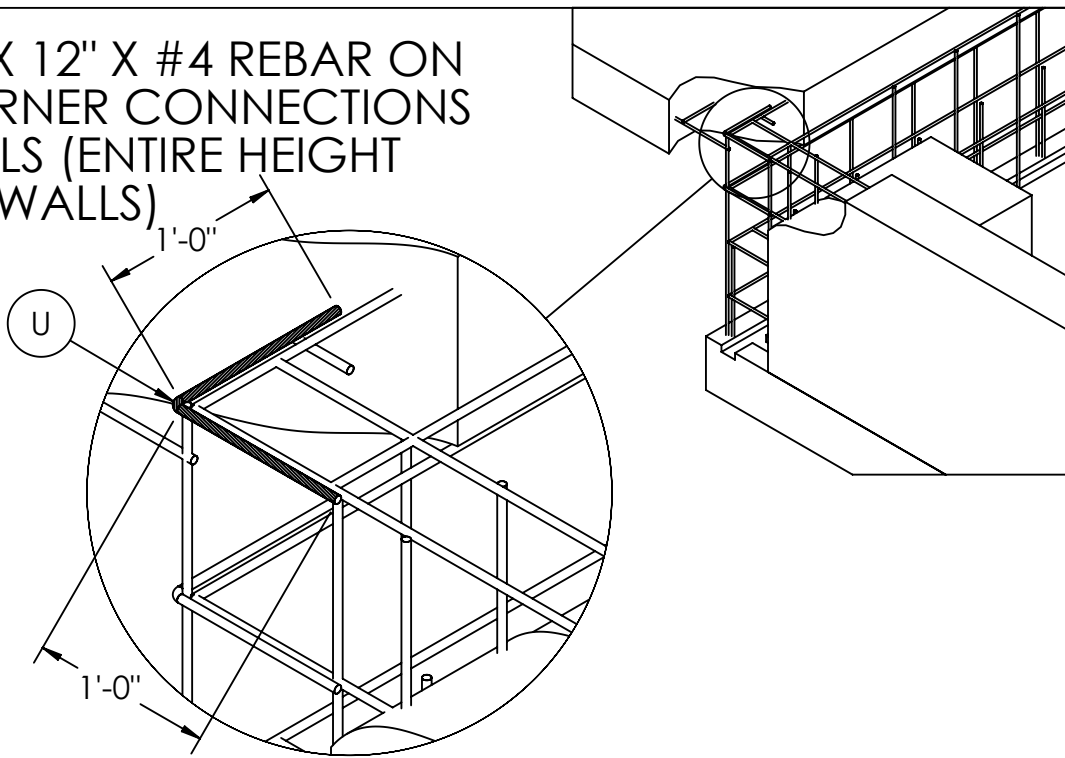
APPROACH STANDARD VIEW

NOTES: LEFT AND RIGHT APPROACHES ARE MIRROR IMAGES OF EACH OTHER AND CONTAIN AN IDENTICAL PART LIST



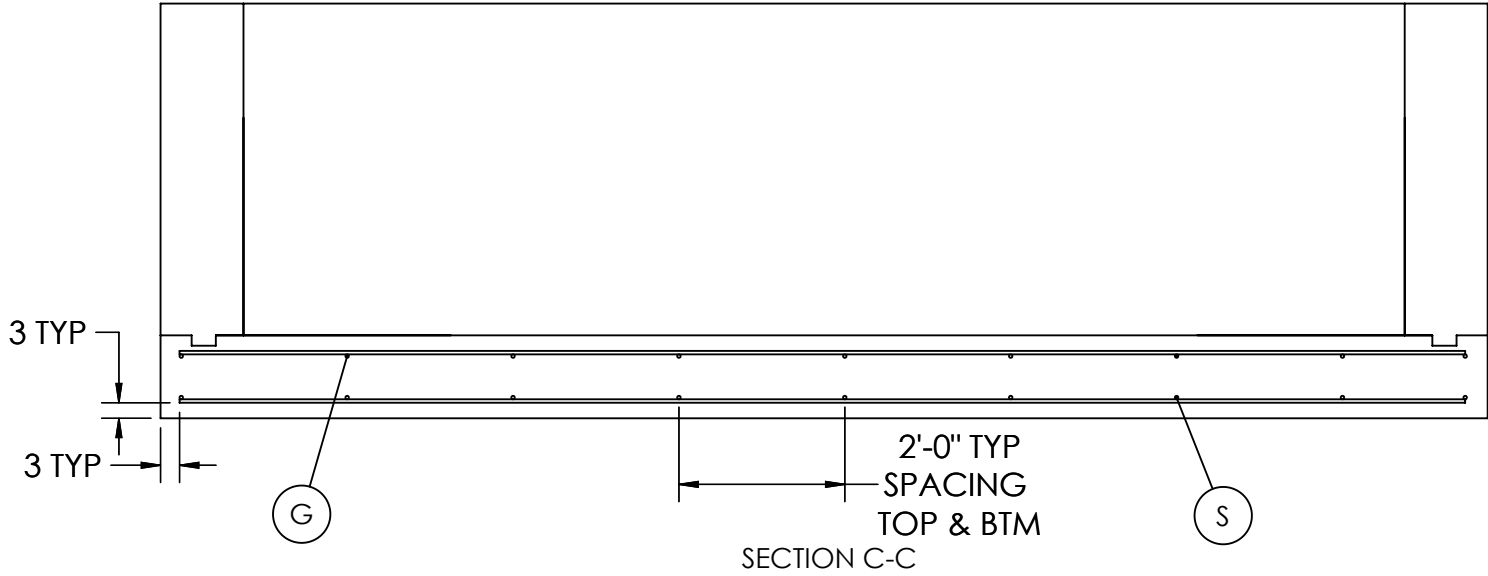
CORNER STANDARD VIEW

NOTES: ADD 12" X 12" X #4 REBAR ON HORIZONTAL CORNER CONNECTIONS BETWEEN WALLS (ENTIRE HEIGHT OF WALLS)

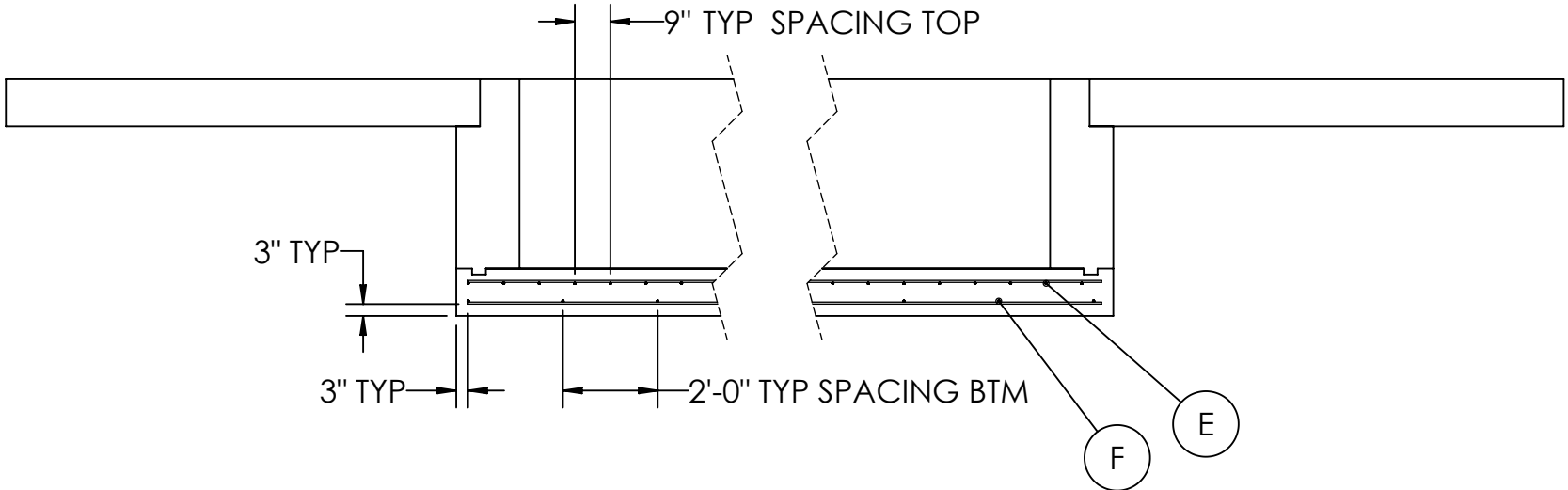


PIER STANDARD VIEWS
(NOT NEEDED)

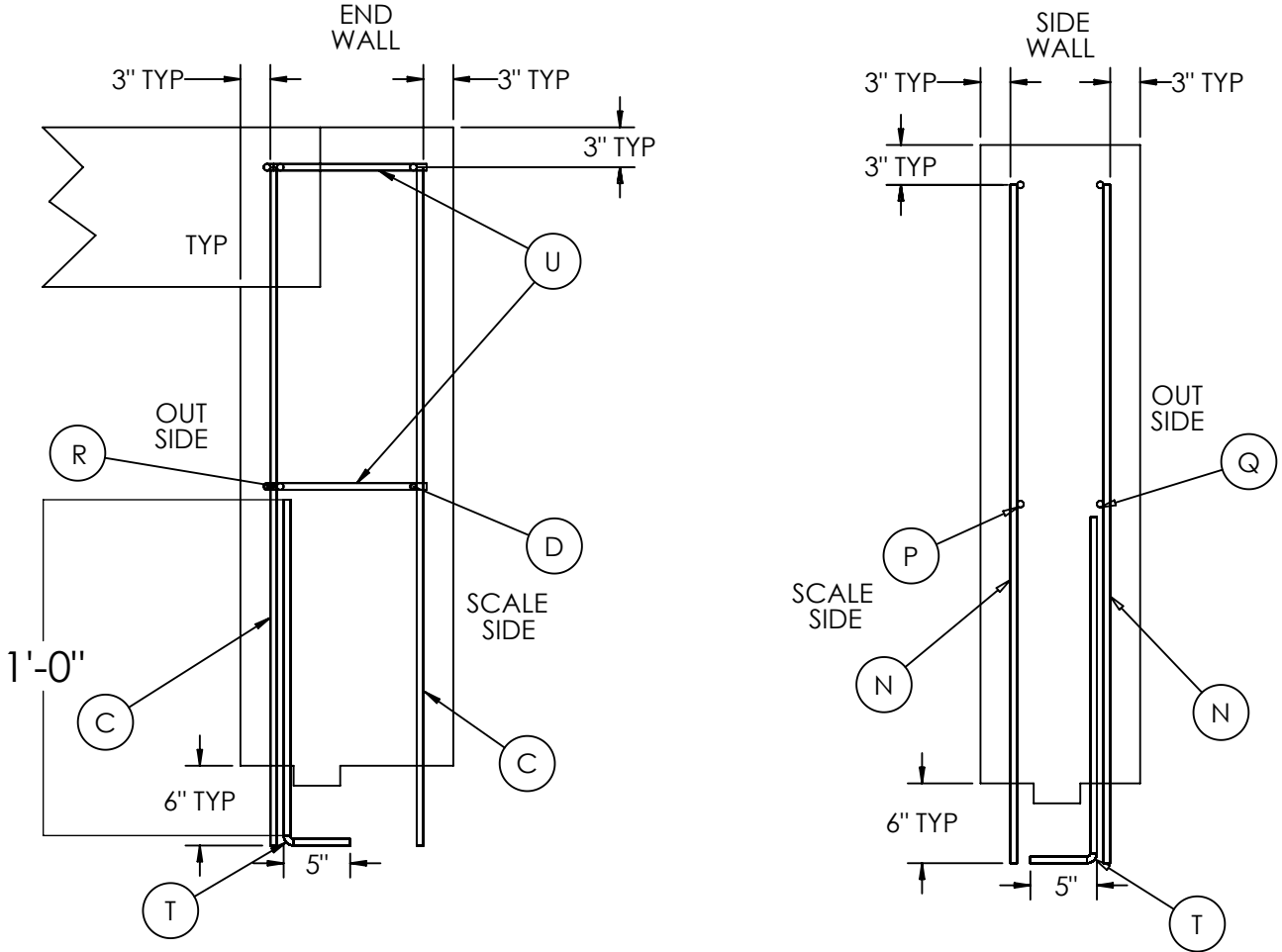
END STANDARD VIEW



SIDE STANDARD VIEW



WALL STANDARD VIEWS



DESIGNED BY: JAMES S. JOHNSON 09/29/2020	DRAWN BY: JAMES S. JOHNSON 09/29/2020	PIER APPROVAL: JAMES S. JOHNSON 09/29/2020	RICE LAKE WEIGHING SYSTEMS	
TREATMENT NONE	THIS DRAWING AND INFORMATION CONTAINED HEREIN IS AND REMAINS THE PROPERTY OF RICE LAKE WEIGHING SYSTEMS INC. - HEREINAFTER REFERRED TO AS RLWS. IT MAY BE USED ONLY FOR RLWS' PROPOSAL AND/OR ITS CUSTOMER'S ORDERS. IT SHALL NOT BE DISCLOSED OR COPIED WITHOUT RLWS' SPECIFIC WRITTEN CONSENT AND SHALL BE IMMEDIATELY RETURNED UPON REQUEST.		UNLESS OTHERWISE SPECIFIED UNITS TO BE INCHES ALL THREADS TO BE CLASS 2 ALL DIMENSIONS APPLICABLE AFTER TREATMENT	
NUMBER OF CRANES: MINIMUM CRANE CAPACITY: ESTIMATED WEIGHT (POUNDS):	DO NOT SCALE DRAWING SURFACE FINISH TOLERANCES DRAWING TOLERANCES UNLESS OTHERWISE SPECIFIED XX: ± XXX: ± ANGLE: ±	SCALE 1:48 SHEET 3 OF 3 THIRD ANGLE PROJECTION Y/N	FOUNDATION, CONCRETE PIT 70FT X 11FT OTR SERIES 18.75IN DEEP PIT, OPTIMIZED 203052	
			REV. A	