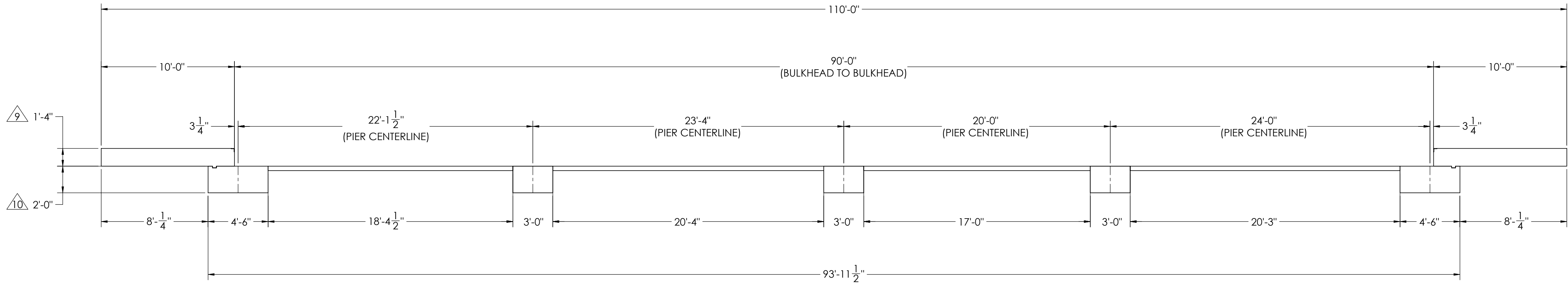
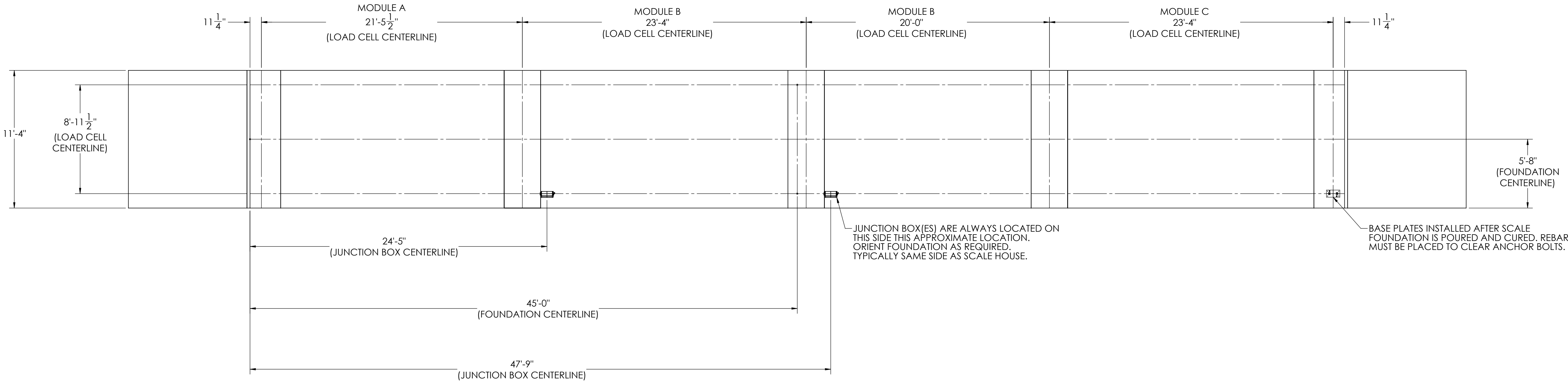


DETAILS

REV.	ECO	REVISION		
		DESCRIPTION	INIT	DATE
A		ENGINEERING RELEASE	SPJ	10/02/2020
B		16 WAS 13 PER CUSTOMER REQUEST	SPJ	10/05/2020



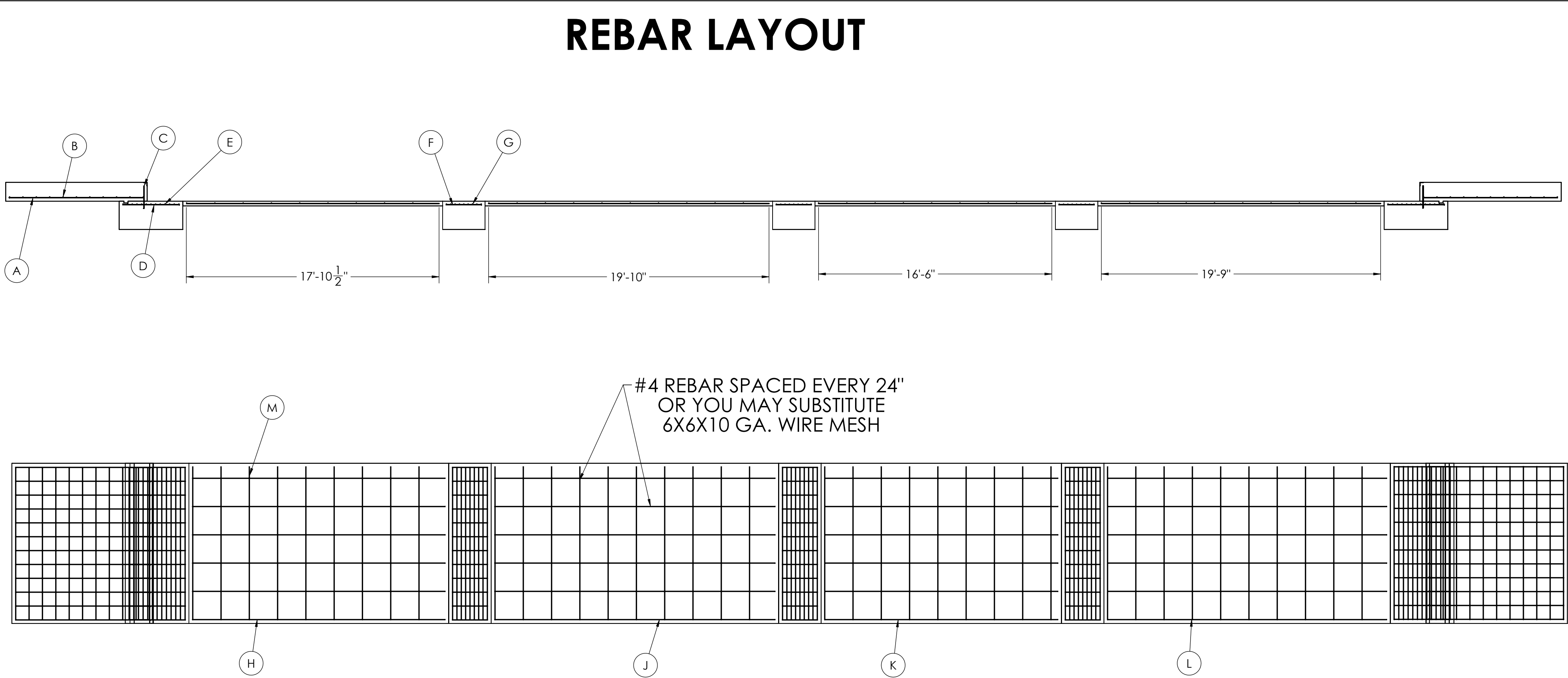
NOTES:

- 1) CONCRETE: f'c = 3000 PSI @ 28 DAYS.
- 2) REINFORCING STEEL: DEFORMED BARS ASTM A615 GRADE 60.
- 3) STATE AND LOCAL AGENCIES MAY HAVE VARIOUS REQUIREMENTS FOR APPROACH RAMP LENGTH, PITCH, AND FOR CLEAN OUT HEIGHT. PLEASE CHECK WITH ALL AGENCIES PRIOR TO CONSTRUCTION.
- 4) MONOLITHIC POUR IS ALLOWED AT CONTRACTOR'S DISCRETION.
- 5) DEVELOP AND MAINTAIN SITE GRADES WHICH WILL RAPIDLY DRAIN SURFACE AND ROOF RUN-OFF AWAY FROM FOUNDATION.
- 6) FOOTINGS HAVE BEEN DESIGNED FOR A MINIMUM SOIL PRESSURE OF 2500 PSF, IT WILL BE THE RESPONSIBILITY OF OTHERS TO VERIFY THIS VALUE.
- 7) WHERE REINFORCING BARS ARE SHOWN CONTINUOUS, LAP SPLICE BARS 40 DIAMETERS.
- 8) APPROACHES TO BE A COMMON PLANE WITHIN 1/4".

- △ APPROACH THICKNESS MAY BE 10" MINIMUM WHERE ALLOWED BY STATE REGULATIONS
- △ FOUNDATION MUST EXTEND A MINIMUM OF 12" BELOW THE FROST PENETRATION LINE

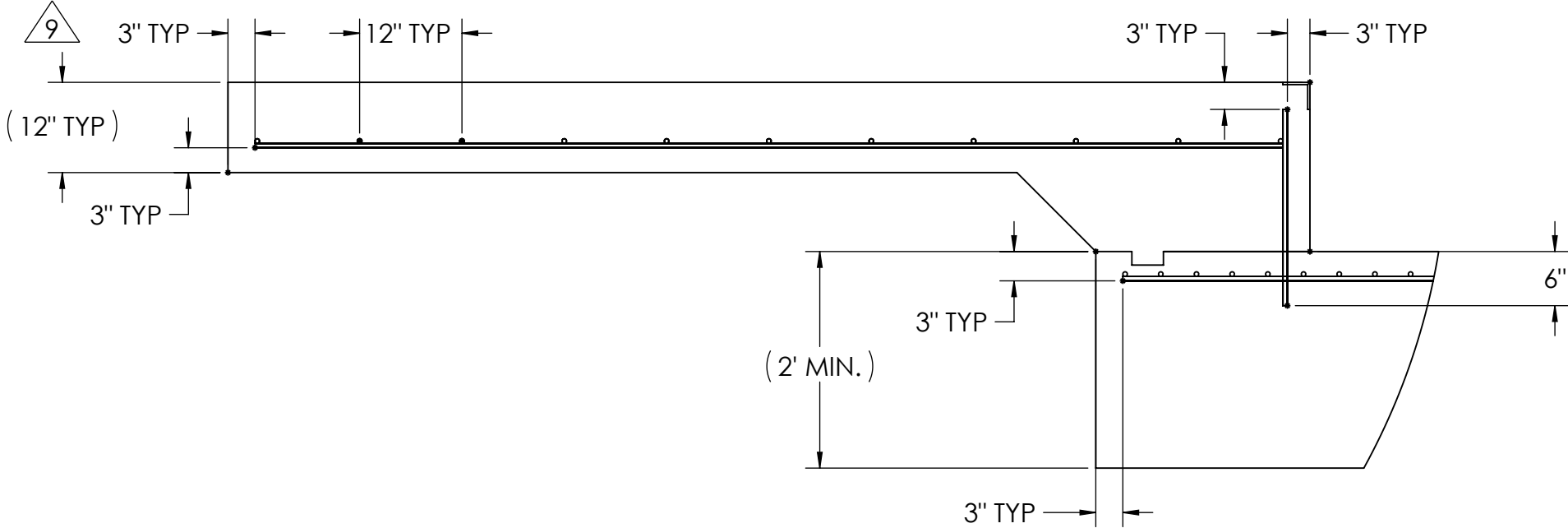
DESIGNED BY: JGMS S. JOHNSON 10/02/2020	DRAWN BY: JGMS S. JOHNSON 10/02/2020	PIER APPROVAL DATE S. JOHNSON 10/05/2020	RICE LAKE WEIGHING SYSTEMS	
TREATMENT NONE	THIS DRAWING AND INFORMATION CONTAINED HEREIN IS AND REMAINS THE PROPERTY OF RICE LAKE WEIGHING SYSTEMS INC. - HEREINAFTER REFERRED TO AS RLWS. IT MAY BE USED ONLY FOR RLWS' PROPOSAL AND/OR ITS CUSTOMER'S ORDERS. IT SHALL NOT BE DISCLOSED OR COPIED WITHOUT RLWS' SPECIFIC WRITTEN CONSENT AND SHALL BE IMMEDIATELY RETURNED UPON REQUEST.		UNLESS OTHERWISE SPECIFIED UNITS TO BE INCHES ALL THREADS TO BE CLASS 2 ALL DIMENSIONS APPLICABLE AFTER TREATMENT	
NUMBER OF CRANES: MINIMUM CRANE CAPACITY: ESTIMATED WEIGHT (POUNDS):	DO NOT SCALE DRAWING SURFACE FINISH ✓	TOLERANCES DRAWING TOLERANCES UNLESS OTHERWISE SPECIFIED .XX: ± .XXX: ± ANGLE: ±	DESCRIPTION FOUNDATION, CONCRETE PIER 90' X 11' OTR-LP SERIES TRUCK SCALE	SCALE 1:55 SHEET 1 OF 3 MATERIAL THIRD ANGLE PROJECTION 177N 203083 REV. B

MATERIAL REQUIREMENTS				
REBAR SCHEDULE				
BAL. NO.	QUANTITY	LENGTH (FT-IN.)	DESCRIPTION	WEIGHT
A	24	9' 6"	# 4 @ 12 O.C.	152
B	22	10' 10"	# 4 @ 12 O.C.	159
C	24	1' 7"	# 4 @ 12 O.C.	25
D	24	4' 0"	# 4 @ 12 O.C.	64
E	26	10' 10"	# 4 @ 4 O.C.	188
F	36	2' 6"	# 4 @ 12 O.C.	60
G	27	10' 10"	# 4 @ 4 O.C.	195
CLEANOUT SCHEDULE				
H	6	17' 10 1/2"	# 4 @ 24 O.C.	72
J	6	19' 10"	# 4 @ 24 O.C.	79
K	6	16' 6"	# 4 @ 24 O.C.	66
L	6	19' 9"	# 4 @ 24 O.C.	79
M	38	10' 10"	# 4 @ 24 O.C.	275
TOTAL WEIGHT OF REBAR (LBS.)				1416
TOTAL LENGTH OF REBAR (FT.)				2120
WIRE MESH				
6 X 6-10 GA.			838 SQ FT	

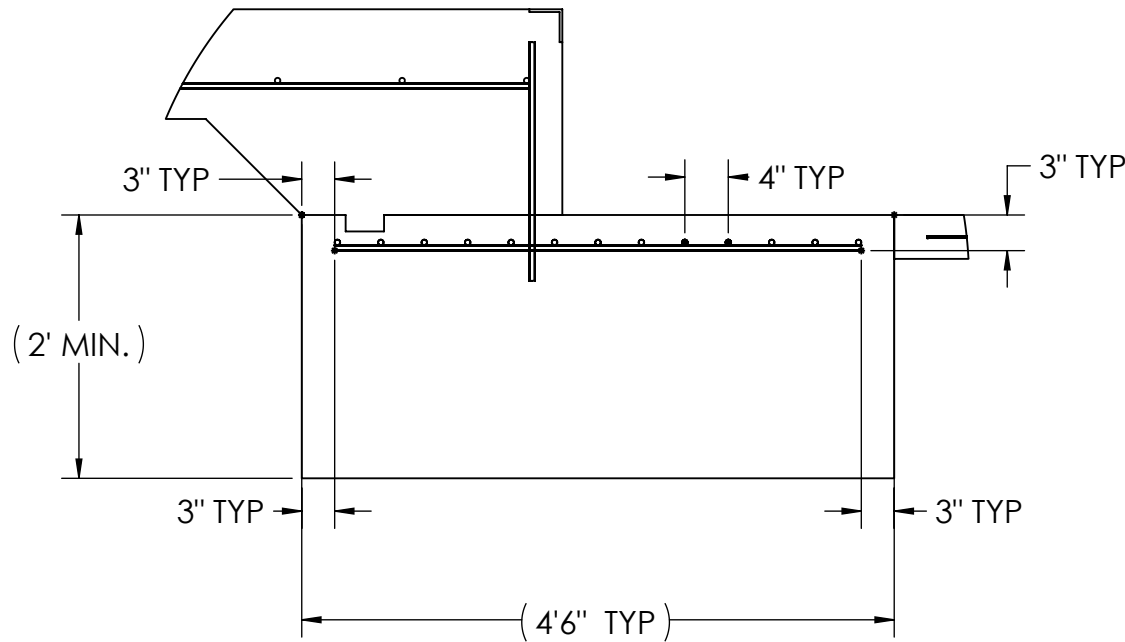


APPROACH STANDARD VIEWS

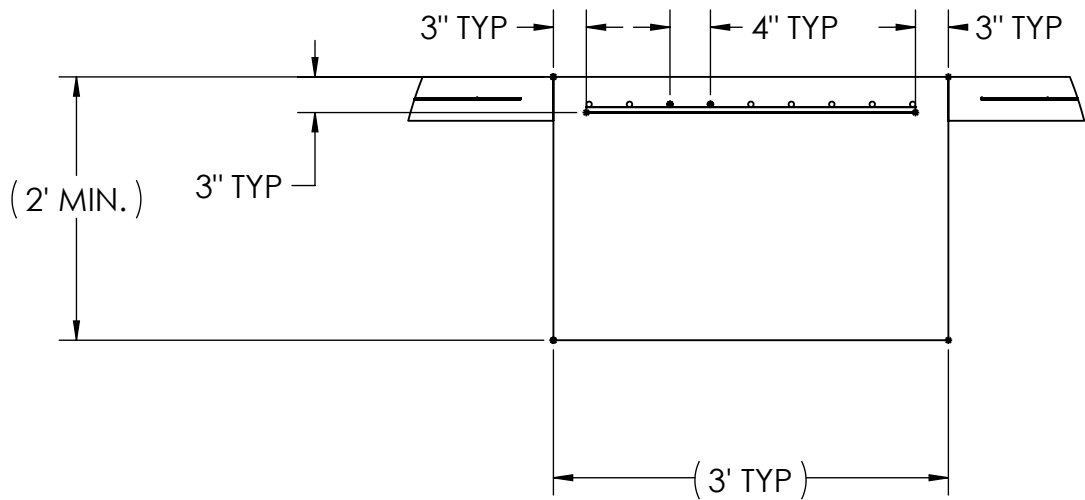
NOTES: 1) LEFT AND RIGHT APPROACHES ARE MIRROR IMAGES OF EACH OTHER AND CONTAIN AN IDENTICAL PART LIST



APPROACH PIER STANDARD VIEWS



PIER STANDARD VIEWS



DESIGNED BY: J.OHNS S.JOHNSON 10/02/2020	DESIGNED BY: J.OHNS S.JOHNSON 10/02/2020	PIER APPROVAL: J.OHNS S.JOHNSON 10/05/2020	RICE LAKE WEIGHING SYSTEMS	
TREATMENT NONE	THIS DRAWING AND INFORMATION CONTAINED HEREIN IS AND REMAINS THE PROPERTY OF RICE LAKE WEIGHING SYSTEMS INC. - HEREINAFTER REFERRED TO AS RLWS. IT MAY BE USED ONLY FOR RLWS' PROPOSAL AND/OR ITS CUSTOMER'S ORDERS. IT SHALL NOT BE DISCLOSED OR COPIED WITHOUT RLWS SPECIFIC WRITTEN CONSENT AND SHALL BE IMMEDIATELY RETURNED UPON REQUEST.	UNLESS OTHERWISE SPECIFIED UNITS TO BE INCHES ALL THREADS TO BE CLASS 2 ALL DIMENSIONS APPLICABLE AFTER TREATMENT	DESCRIPTION FOUNDATION, CONCRETE PIER 90' X 11' OTR-LP SERIES TRUCK SCALE	
NUMBER OF CRANES: MINIMUM CRANE CAPACITY: ESTIMATED WEIGHT (POUNDS)	DO NOT SCALE DRAWING SURFACE FINISH ✓	TOLERANCES DRAWING TOLERANCES UNLESS OTHERWISE SPECIFIED .XX: ± .XXX: ± ANGLE: ±	SCALE 1:48	SHEET 3 OF 3
THIRD ANGLE PROJECTION			203083	REV B