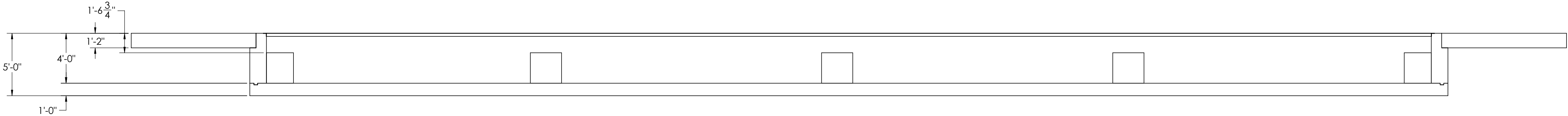
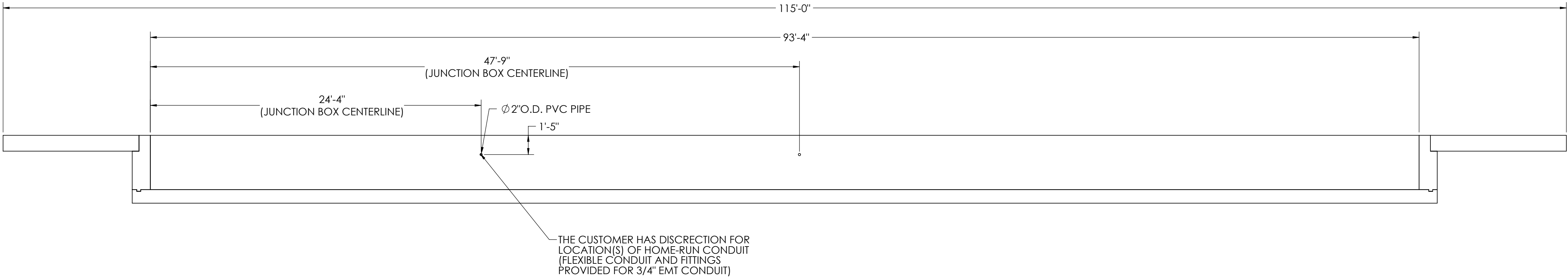
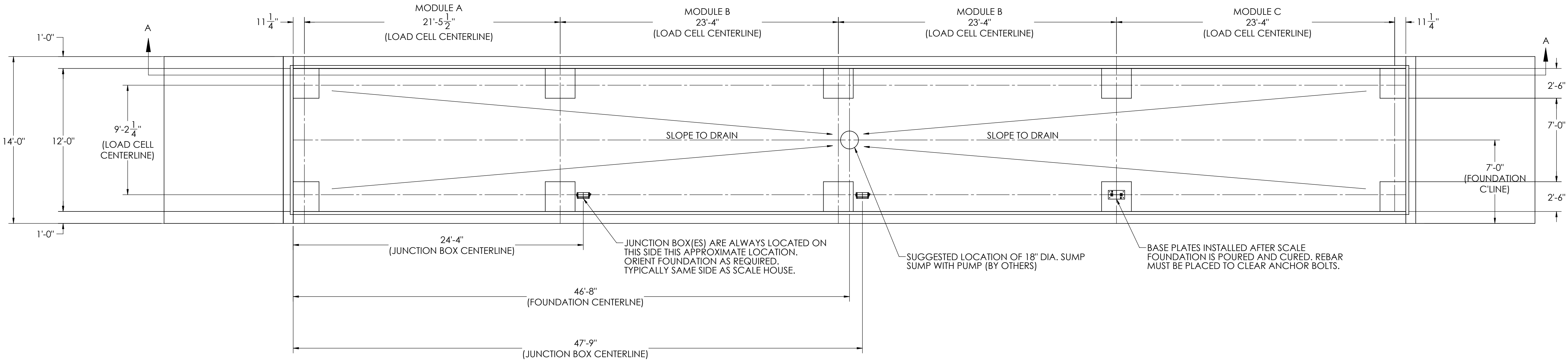


DETAILS

REV.		ECO	REVISION		INIT	DATE
A			ENGINEERING RELEASE		SPJ	04/07/2021



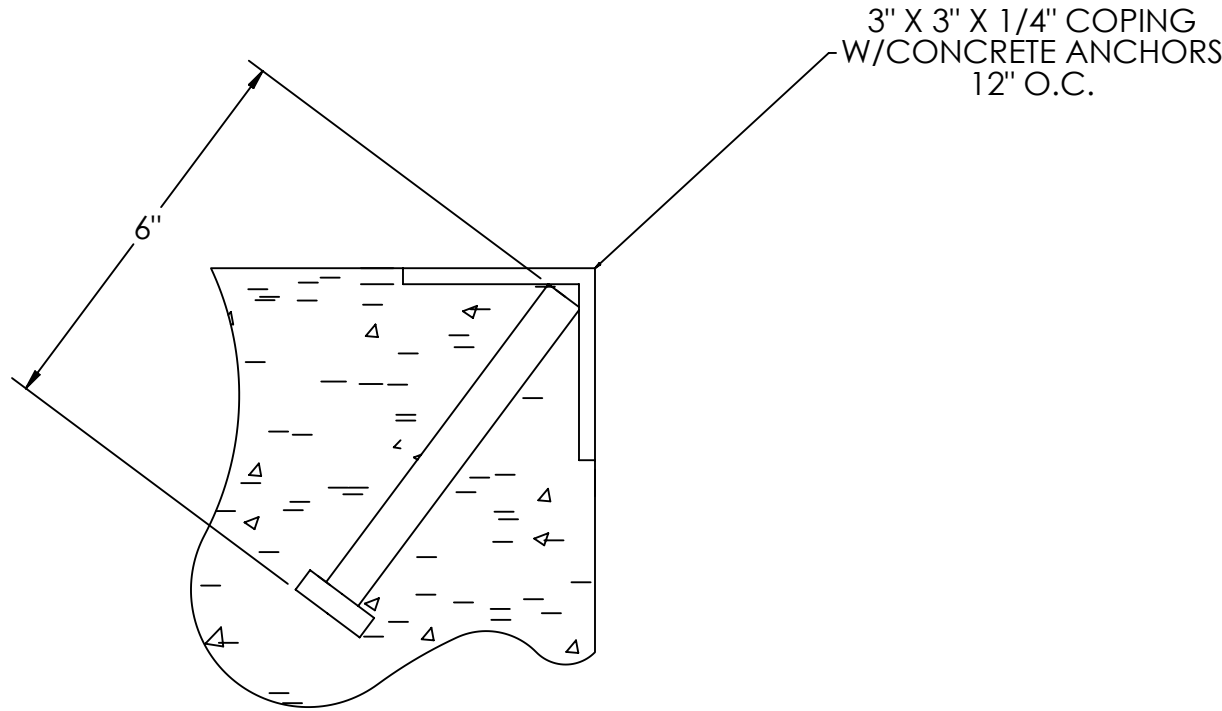
NOTES:

- 1) CONCRETE: f<sub>c</sub> = 3500 PSI @ 28 DAYS.
- 2) REINFORCING STEEL: DEFORMED BARS ASTM A615 GRADE 60.
- 3) STATE AND LOCAL AGENCIES MAY HAVE VARIOUS REQUIREMENTS FOR APPROACH RAMP LENGTH, PITCH, AND FOR CLEAN OUT HEIGHT. PLEASE CHECK WITH ALL AGENCIES PRIOR TO CONSTRUCTION.
- 4) MONOLITHIC POUR OF SLAB AND PIERS IS ALLOWED AT CONTRACTOR'S DISCRETION.
- 5) DEVELOP AND MAINTAIN SITE GRADES WHICH WILL RAPIDLY DRAIN SURFACE AND ROOF RUN-OFF AWAY FROM FOUNDATION.
- 6) FOOTINGS HAVE BEEN DESIGNED FOR A MINIMUM SOIL PRESSURE OF 3000 PSF, IT WILL BE THE RESPONSIBILITY OF OTHERS TO VERIFY THIS VALUE.
- 7) WHERE REINFORCING BARS ARE SHOWN CONTINUOUS, LAP SPLICE BARS 40 DIAMETERS.
- 8) APPROACHES TO BE A COMMON PLANE WITHIN 1/4".

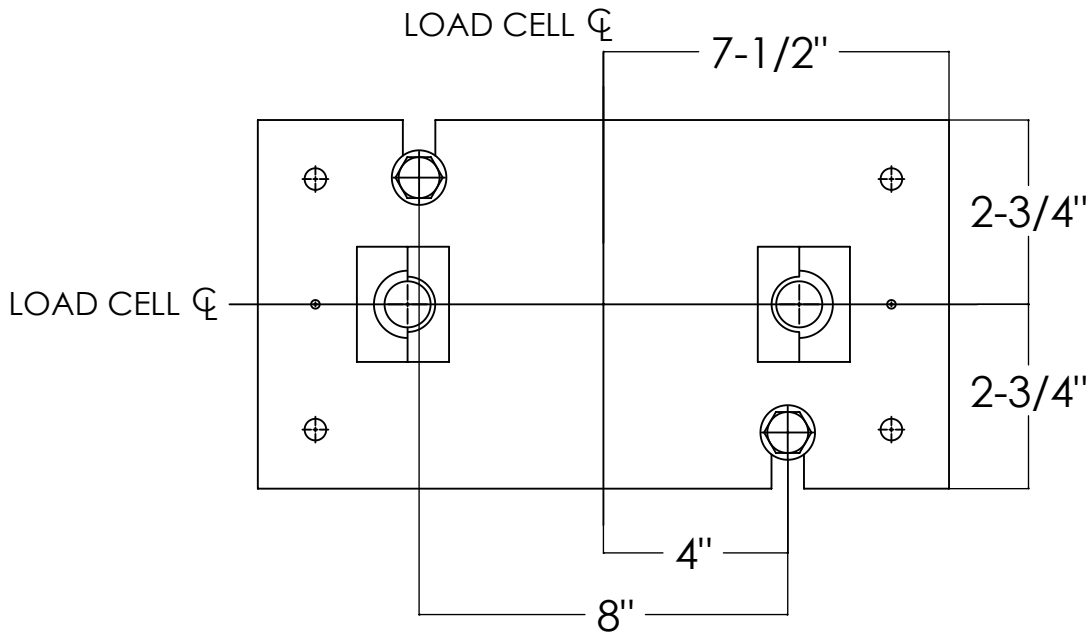
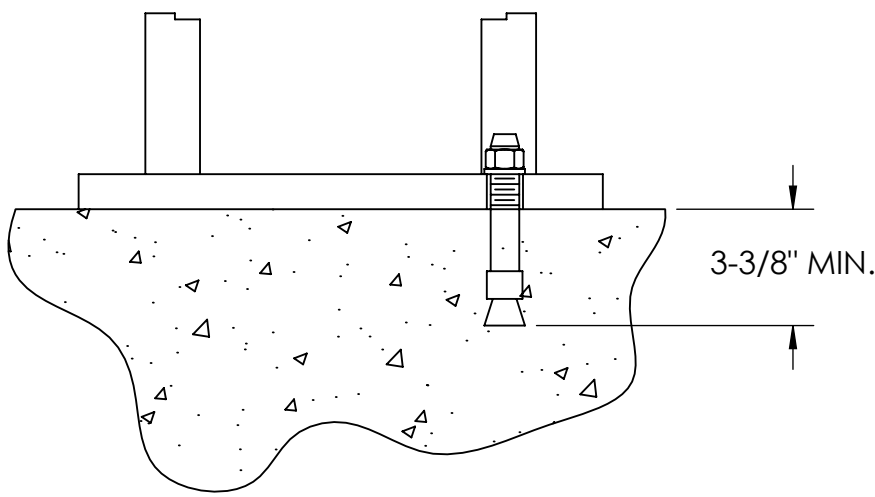
DESIGNED BY: J. JOHNSON 04/08/2021		DRAWN BY: J. JOHNSON 04/08/2021		FIELD APPROVAL: J. JOHNSON 04/08/2021		<b>RICE LAKE</b> WEIGHING SYSTEMS	
TREATMENT: NONE		THIS DRAWING AND INFORMATION CONTAINED HEREIN IS AND REMAINS THE PROPERTY OF RICE LAKE WEIGHING SYSTEMS INC. - HEREINAFTER REFERRED TO AS RLWS. IT MAY BE USED ONLY FOR RLWS' PROPOSAL AND/OR ITS CUSTOMER'S ORDERS. IT SHALL NOT BE DISCLOSED OR COPIED WITHOUT RLWS' SPECIFIC WRITTEN CONSENT AND SHALL BE IMMEDIATELY RETURNED UPON REQUEST.		UNLESS OTHERWISE SPECIFIED UNITS TO BE INCHES ALL THREADS TO BE CLASS 2 ALL DIMENSIONS APPLICABLE AFTER TREATMENT		DESCRIPTION: FOUNDATION, CONCRETE PIT 93FT X 12FT OTR-SHD SERIES	
NUMBER OF CRANES: 1		TOLERANCES: DRAWING TOLERANCES: .XX: ± SURFACE FINISH: .XXX: ± ANGLE: ±		SCALE: 1:55 SHEET: 1 OF 3 MATERIAL: 206350		THIRD ANGLE PROJECTION: Y/N	
MINIMUM CRANE CAPACITY: 1		ESTIMATED WEIGHT (POUNDS): 1		DO NOT SCALE		REV: A	

CONCRETE SCHEDULE			
			VOLUME (CUBIC YARDS)
APPROACHES			12.1
FLOOR			49.7
PIERS			5.3
WALLS			32.4
TOTAL			99.6
MISC. STEEL			
PIT COPING	3 X 3 X 1/4	216 LN .FT	1058 LBS

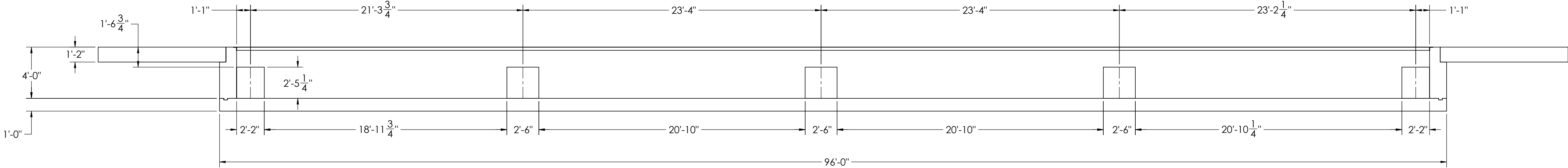
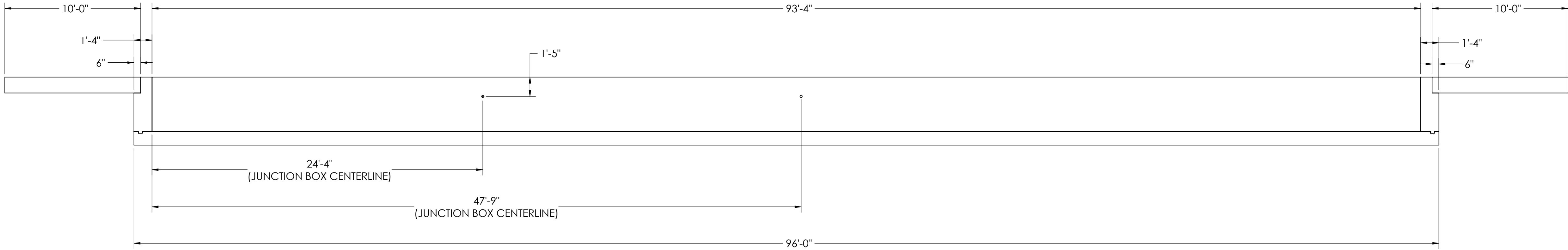
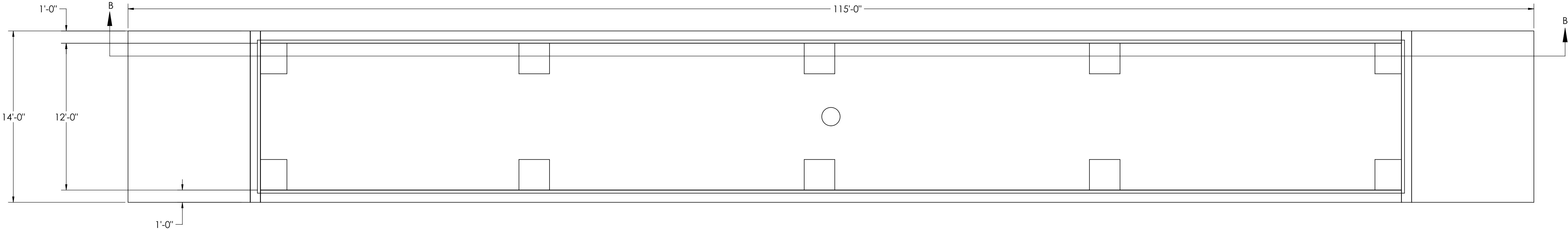
CONCRETE LAYOUT



DETAIL C



DETAIL D

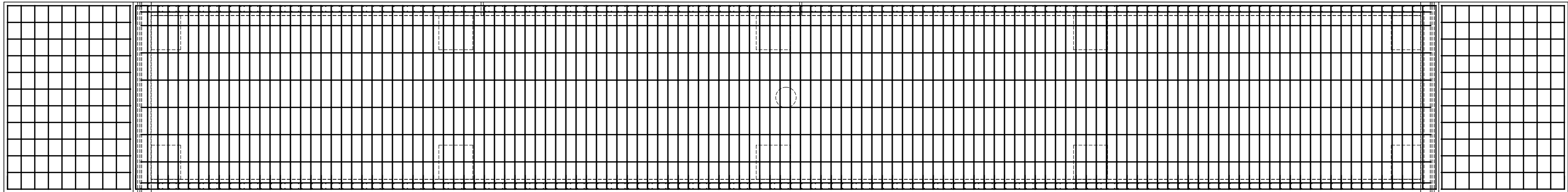
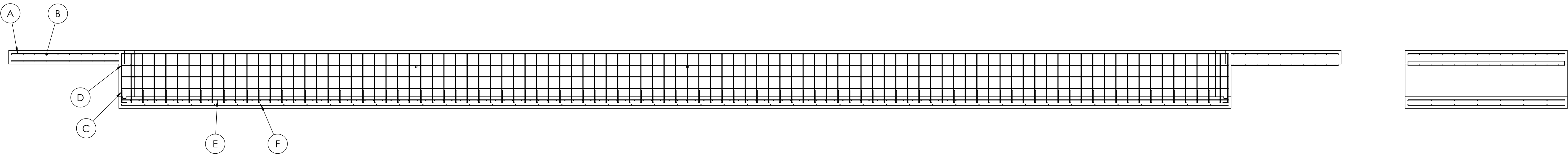


SECTION B-B

DESIGNED BY: JAMES S. JOHNSON 04/08/2021	DRAWN BY: JAMES S. JOHNSON 04/08/2021	FIELD APPROVAL: JAMES S. JOHNSON 04/08/2021	<b>RICE LAKE</b> WEIGHING SYSTEMS	
TREATMENT: NONE	THIS DRAWING AND INFORMATION CONTAINED HEREIN IS AND REMAINS THE PROPERTY OF RICE LAKE WEIGHING SYSTEMS INC. - HEREINAFTER REFERRED TO AS RLWS. IT MAY BE USED ONLY FOR RLWS' PROPOSAL AND/OR ITS CUSTOMER'S ORDERS. IT SHALL NOT BE DISCLOSED OR COPIED WITHOUT RLWS' SPECIFIC WRITTEN CONSENT AND SHALL BE IMMEDIATELY RETURNED UPON REQUEST.	UNLESS OTHERWISE SPECIFIED UNITS TO BE INCHES ALL THREADS TO BE CLASS 2 AFTER TREATMENT	DESCRIPTION: FOUNDATION, CONCRETE PIT 93FT X 12FT OTR-SHD SERIES	
NUMBER OF CRANES: 1	DO NOT SCALE DRAWING SURFACE FINISH .XXX: ANGLE: ✓	TOLERANCES DRAWING TOLERANCES .XX: .XXX: ANGLE: ✓	SCALE: 1:64 SHEET: 2 OF 3 MATERIAL: 206350	REV: A

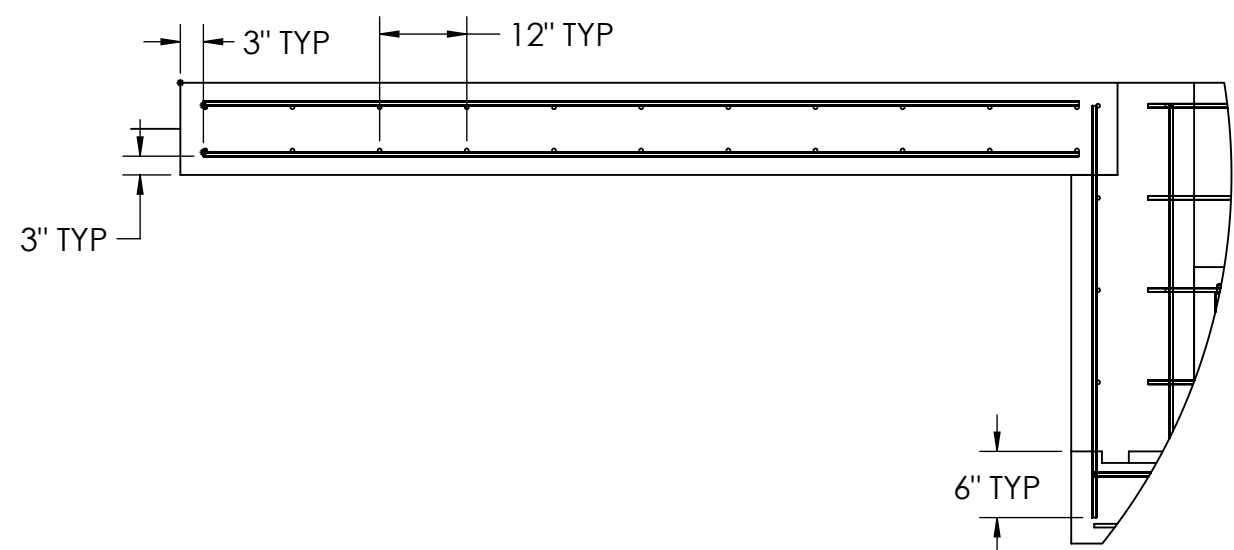
# REBAR LAYOUT

MATERIAL REQUIREMENTS				
REBAR SCHEDULE				
BAL. NO.	QUANTITY	LENGTH (FT-IN.)	DESCRIPTION	WEIGHT
A	48	9' 6"	# 4 @ 12 O.C.	305
B	40	13' 6"	# 4 @ 12 O.C.	361
C	36	4' 3"	# 4 @ 16 O.C.	102
D	20	13' 6"	# 4 @ 12 O.C.	180
E	128	13' 6"	# 4 @ 9 O.C.	1154
F	48	13' 6"	# 4 @ 24 O.C.	433
G	7	95' 6"	# 4 @ 24 O.C.	447
H	8	1' 8"	# 4 @ 36 O.C.	9
J	12	2' 0"	# 4 @ 36 O.C.	16
K	40	3' 0"	# 4 AS SHOWN	80
L	34	2' 8"	# 4 @ 10 O.C.	61
M	36	2' 8"	# 4 @ 12 O.C.	64
N	512	4' 3"	# 4 @ 12 O.C.	1454
P	8	94' 9"	# 4 @ 12 O.C.	506
Q	8	94' 9"	# 4 @ 12 O.C.	506
R	8	13' 6"	# 4 @ 12 O.C.	72
S	7	95' 6"	# 4 @ 24 O.C.	447
T	280	1' 5"	# 5 @ 12 O.C.	414
U	16	2' 0"	# 5 @ 12 O.C.	33
TOTAL WEIGHT OF REBAR (LBS.)				6643
TOTAL LENGTH OF REBAR (FT.)				9705

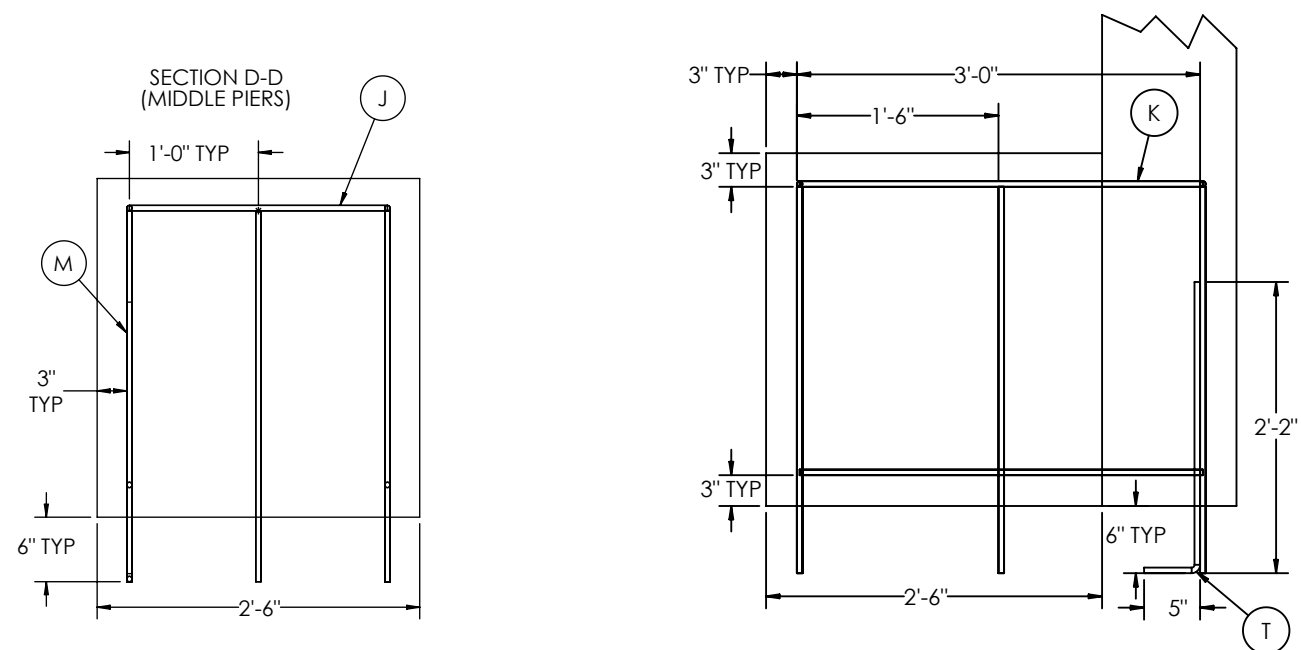
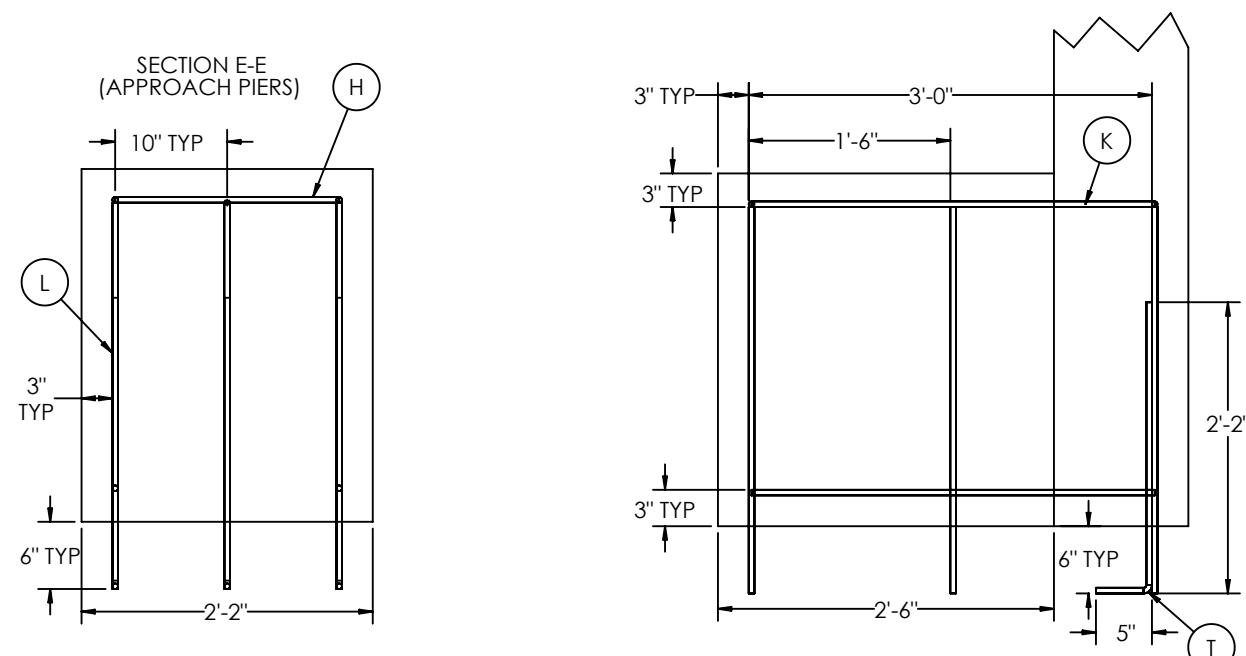


### APPROACH STANDARD VIEW

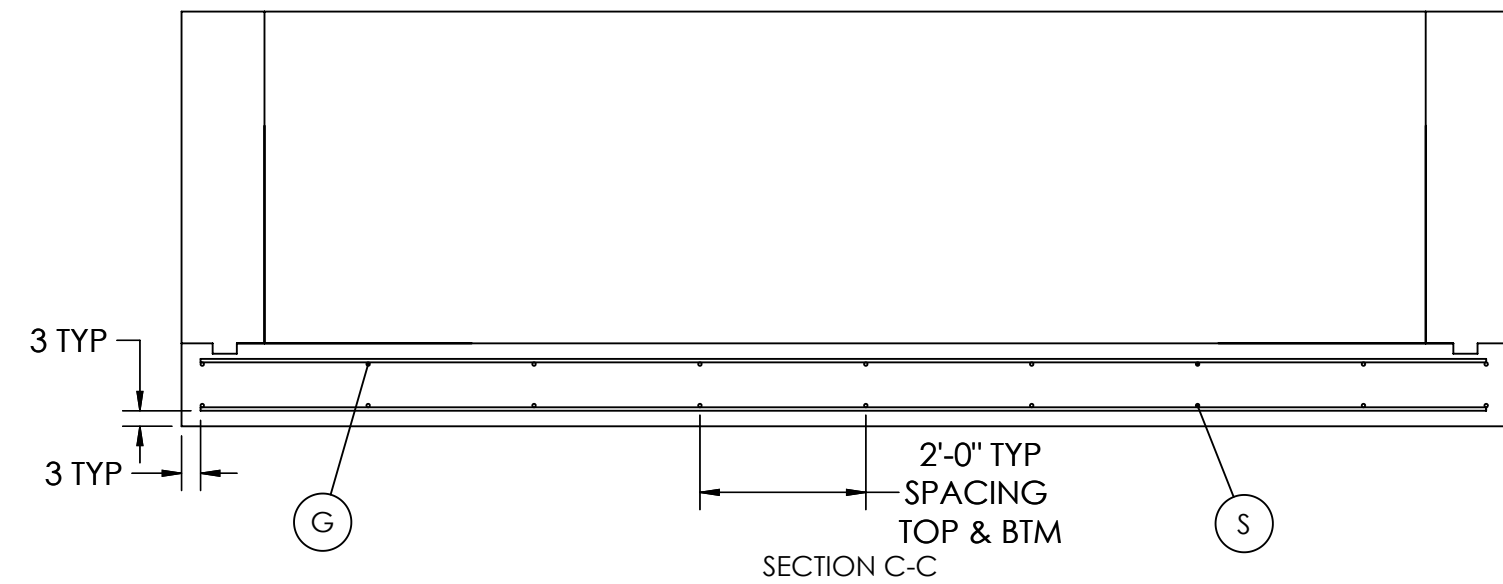
**NOTES:** LEFT AND RIGHT APPROACHES ARE MIRROR IMAGES OF EACH OTHER AND CONTAIN AN IDENTICAL PART LIST



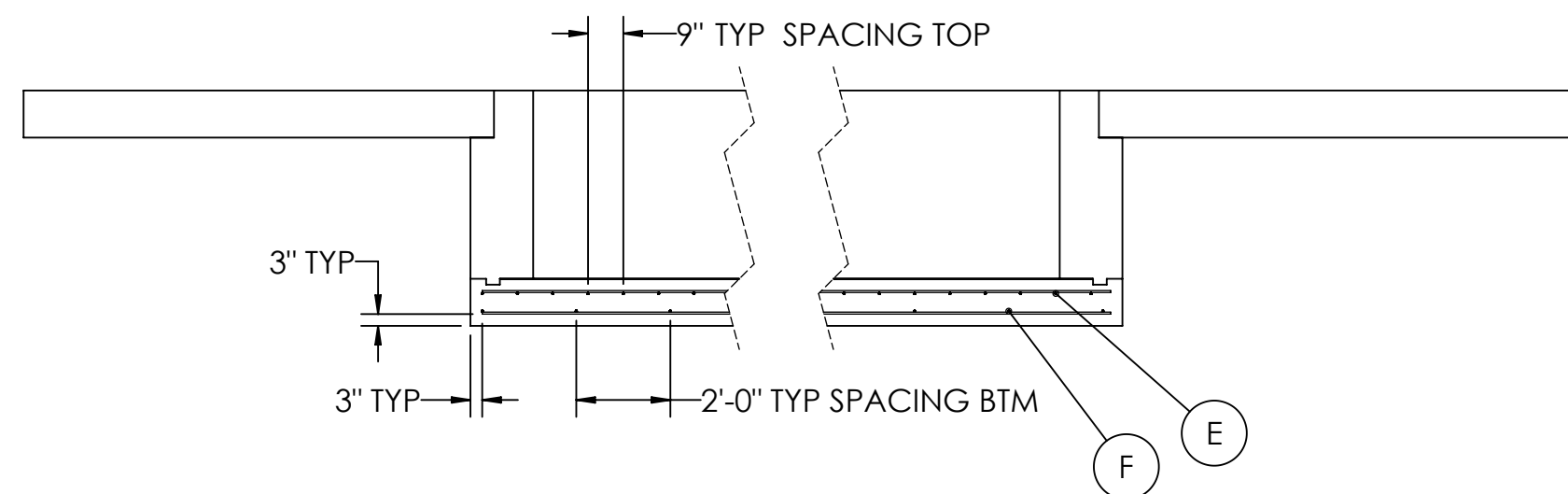
## PIER STANDARD VIEWS



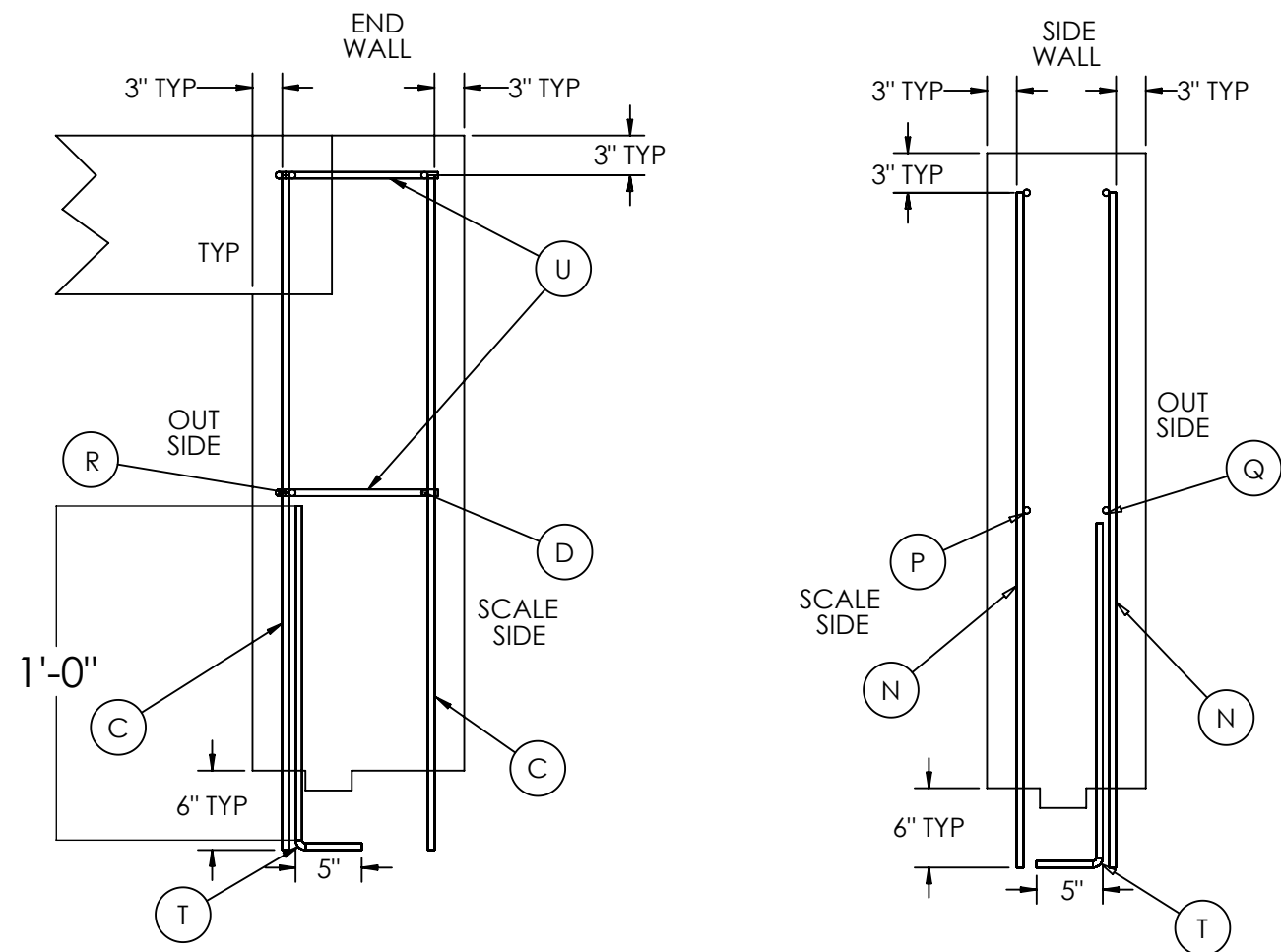
**END STANDARD VIEW**



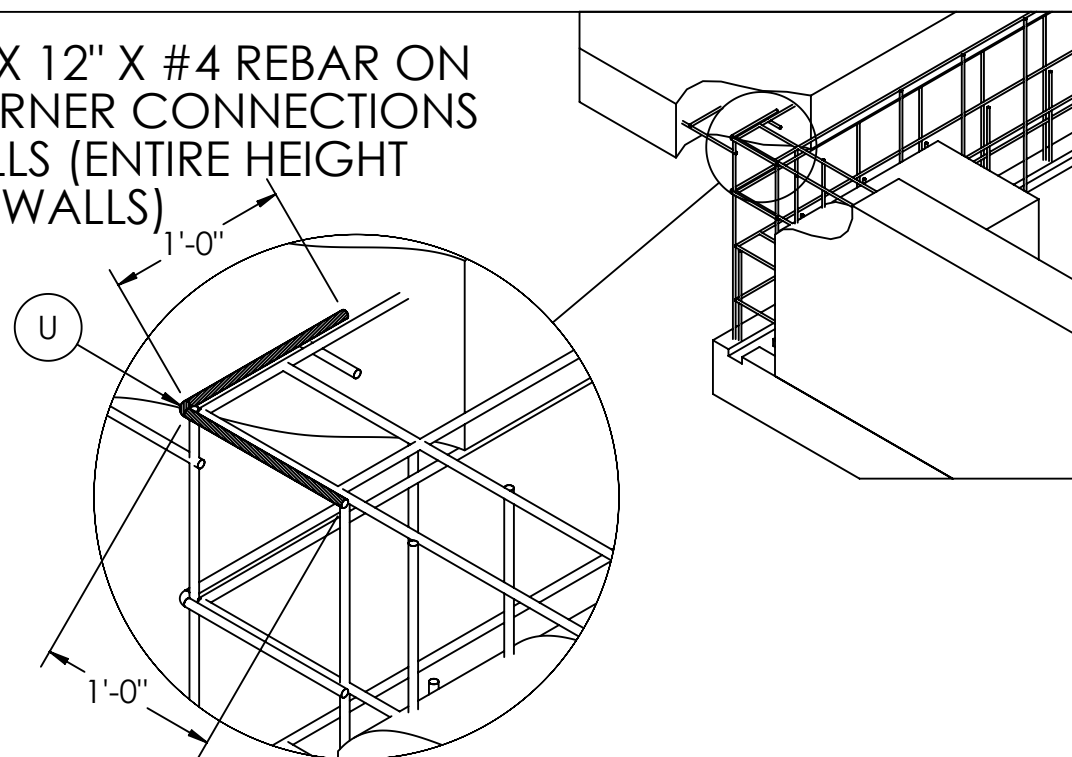
### SIDE STANDARD VIEW




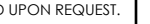


## WALL STANDARD VIEWS



**NOTES:** ADD 12" X 12" X #4 REBAR ON HORIZONTAL CORNER CONNECTIONS BETWEEN WALLS (ENTIRE HEIGHT OF WALLS)



DESIGNED BY (DATE) <b>S. JOHNSON</b> <b>04/08/2021</b>		DRAWN BY (DATE) <b>S. JOHNSON</b> <b>04/08/2021</b>		FIELD APPROVAL DATE <b>S. JOHNSON</b> <b>04/08/2021</b>			
TREATMENT  <b>NONE</b>		<p>THIS DRAWING AND INFORMATION CONTAINED HEREIN, IS AND REMAINS THE PROPERTY OF RICE LAKE WEIGHING SYSTEMS INC., HEREINAFTER REFERRED TO AS RLS, IT MAY BE USED ONLY FOR THE INTENTED PURPOSE AND ITS CUSTOMER. IF IT IS NOT PURCHASED OR USED BY ITS CUSTOMER, IT SHALL NOT BE DELETED OR COPIED WITHOUT RLS SPECIFIC WRITTEN CONSENT AND SHALL BE IMMEDIATELY RETURNED UPON REQUEST.</p>		<p>UNLESS OTHERWISE SPECIFIED UNITS TO BE INCHES ALL THINGS TO BE CLASS 2 ALL DIMENSIONS APPLICABLE FOR TREATMENT</p>			
NUMBER OF CRANES:  		<p><b>TOLERANCES</b> DRAWING TOLERANCES UNLESS OTHERWISE SPECIFIED          .XX; ±          .XXX; ±          ANGLE: ✓</p>		<p>DESCRIPTION <b>FOUNDATION, CONCRETE PIT 93FT X 12FT OTR-SHD SERIES</b></p>			
MINIMUM CRANE CAPACITY:  		DO NOT SCALE DRAWING <b>SURFACE FINISH</b>		SCALE <b>1:48</b>	SHEET <b>3 OF 3</b>	MATERIAL	REV <b>A</b>
(ESTIMATED WEIGHT (POUNDS))  ✓						<b>206350</b>	