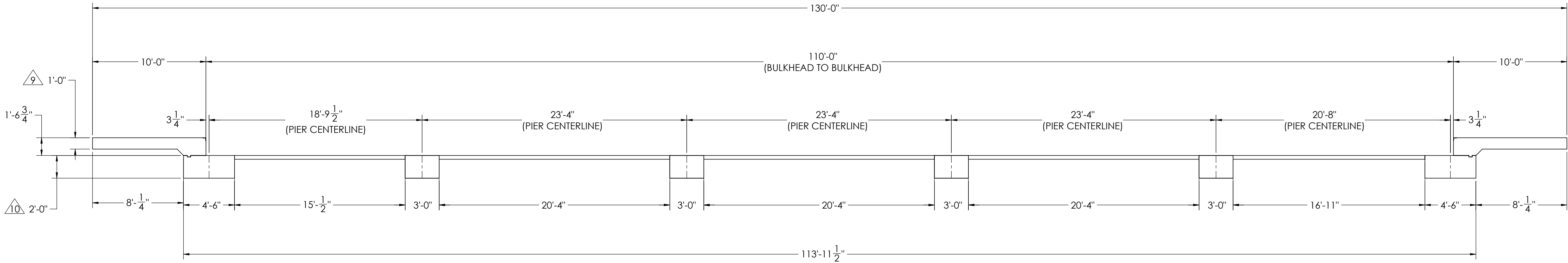
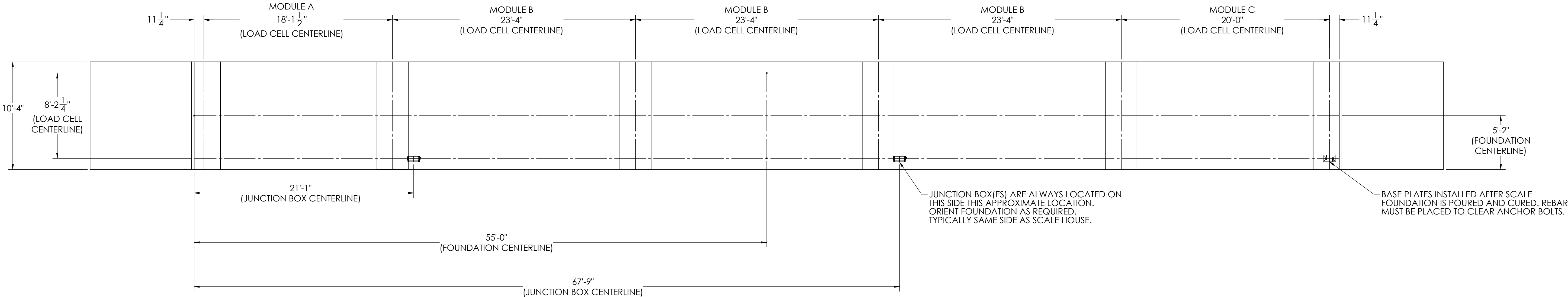


DETAILS

REVISION		DESCRIPTION	INIT	DATE
REV.	ECO			
A		ENGINEERING RELEASE	SPJ	04/12/2021



NOTES:

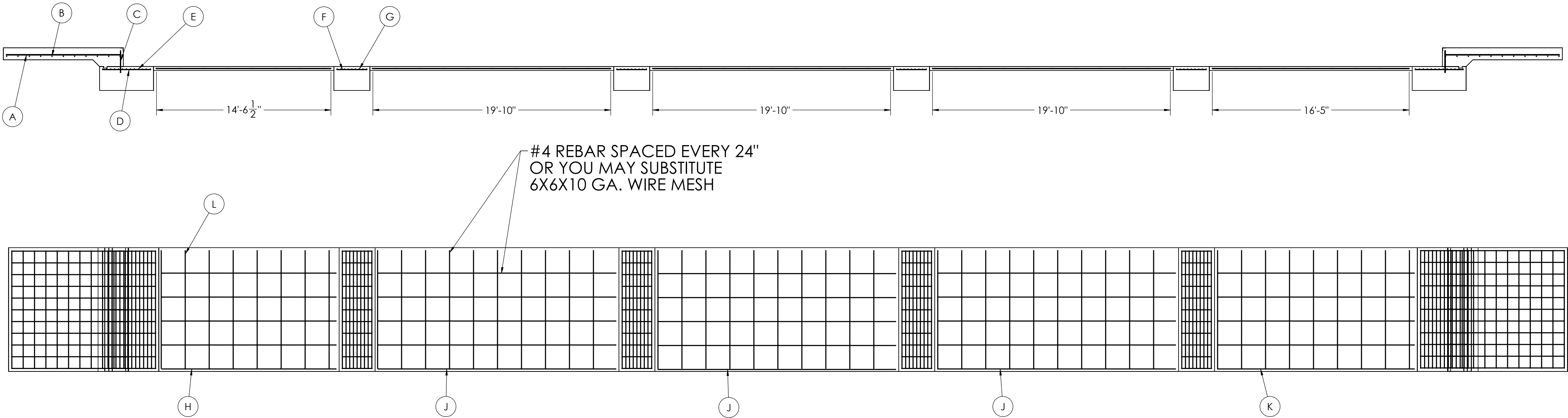
- 1) CONCRETE: f'c = 3000 PSI @ 28 DAYS.
- 2) REINFORCING STEEL: DEFORMED BARS ASTM A615 GRADE 60.
- 3) STATE AND LOCAL AGENCIES MAY HAVE VARIOUS REQUIREMENTS FOR APPROACH RAMP LENGTH, PITCH, AND FOR CLEAN OUT HEIGHT. PLEASE CHECK WITH ALL AGENCIES PRIOR TO CONSTRUCTION.
- 4) MONOLITHIC POUR IS ALLOWED AT CONTRACTOR'S DISCRETION.
- 5) DEVELOP AND MAINTAIN SITE GRADES WHICH WILL RAPIDLY DRAIN SURFACE AND ROOF RUN-OFF AWAY FROM FOUNDATION.
- 6) FOOTINGS HAVE BEEN DESIGNED FOR A MINIMUM SOIL PRESSURE OF 2500 PSF. IT WILL BE THE RESPONSIBILITY OF OTHERS TO VERIFY THIS VALUE.
- 7) WHERE REINFORCING BARS ARE SHOWN CONTINUOUS, LAP SPLICE BARS 40 DIAMETERS.
- 8) APPROACHES TO BE A COMMON PLANE WITHIN 1/4".

△ APPROACH THICKNESS MAY BE 10" MINIMUM WHERE ALLOWED BY STATE REGULATIONS  
△ FOUNDATION MUST EXTEND A MINIMUM OF 12" BELOW THE FROST PENETRATION LINE

DESIGNED BY: JAMES S. JOHNSON 04/12/2021	DRAWN BY: JAMES S. JOHNSON 04/12/2021	PIER APPROVAL DATE: S. JOHNSON 04/12/2021	<b>RICE LAKE</b> WEIGHING SYSTEMS	
TREATMENT  NONE	THIS DRAWING AND INFORMATION CONTAINED HEREIN IS AND REMAINS THE PROPERTY OF RICE LAKE WEIGHING SYSTEMS INC. - HEREINAFTER REFERRED TO AS RLWS. IT MAY BE USED ONLY FOR RLWS' PROPOSAL AND/OR ITS CUSTOMER'S ORDERS. IT SHALL NOT BE DISCLOSED OR COPIED WITHOUT RLWS SPECIFIC WRITTEN CONSENT AND SHALL BE IMMEDIATELY RETURNED UPON REQUEST.		UNLESS OTHERWISE SPECIFIED UNITS TO BE INCHES ALL THREADS TO BE CLASS 2 ALL DIMENSIONS APPLICABLE AFTER TREATMENT	
NUMBER OF CRANES:  MINIMUM CRANE CAPACITY:  ESTIMATED WEIGHT (POUNDS):	DO NOT SCALE DRAWING SURFACE FINISH ✓	TOLERANCES DRAWINGS TOLERANCES UNLESS OTHERWISE SPECIFIED .XX: ± .XXX: ± ANGLE: ±	SCALE 1:60	SHEET 1 OF 3
FOUNDATION, CONCRETE PIER 110' X 10'			OTR SERIES TRUCK SCALE	
THIRD ANGLE PROJECTION			206402	REV. A

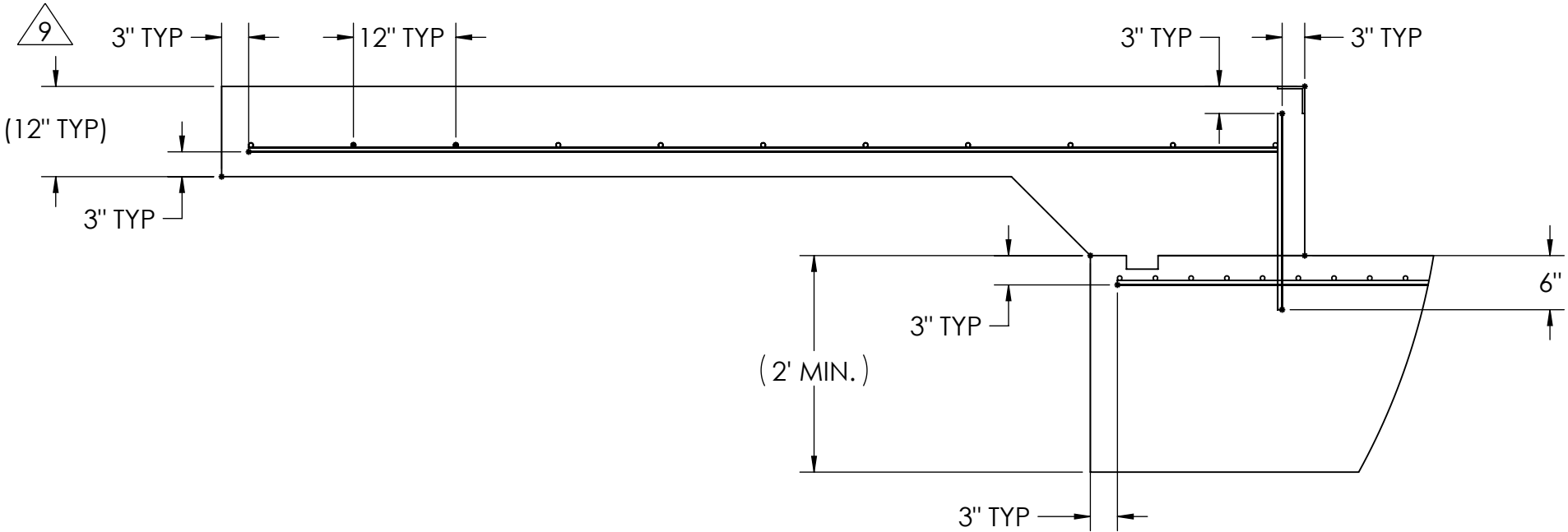


MATERIAL REQUIRMENTS				
REBAR SCHEDULE				
BAL. NO.	QUANTITY	LENGTH (FT-IN.)	DESCRIPTION	WEIGHT
A	22	9' 6"	# 4 @ 12 O.C.	140
B	22	9' 10"	# 4 @ 12 O.C.	145
C	22	1' 9 1/2"	# 4 @ 12 O.C.	26
D	24	4' 0"	# 4 @ 12 O.C.	64
E	26	9' 10"	# 4 @ 4 O.C.	171
F	48	2' 6"	# 4 @ 12 O.C.	80
G	36	9' 10"	# 4 @ 4 O.C.	236
CLEANOUT SCHEDULE				
H	5	14' 6 1/2"	# 4 @ 24 O.C.	49
J	15	19' 10"	# 4 @ 24 O.C.	199
K	5	16' 5"	# 4 @ 24 O.C.	55
L	47	9' 10"	# 4 @ 24 O.C.	309
TOTAL WEIGHT OF REBAR (LBS.)				1473
TOTAL LENGTH OF REBAR (FT.)				2205
WIRE MESH				6 X 6-10 GA. 940 SQ FT

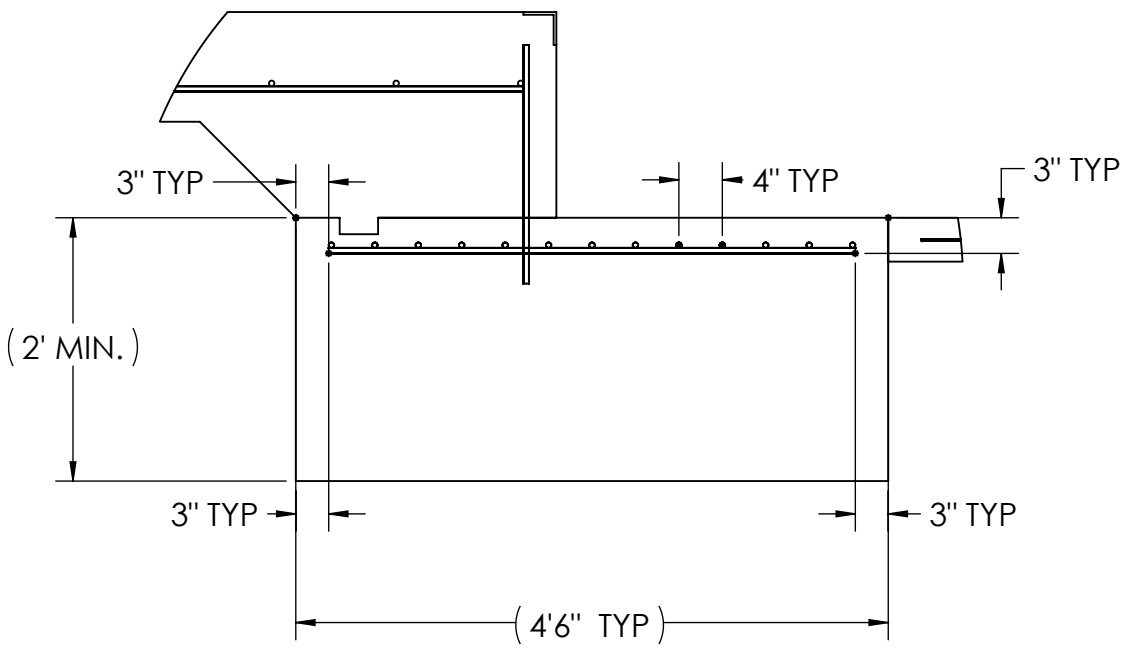


### APPROACH STANDARD VIEWS

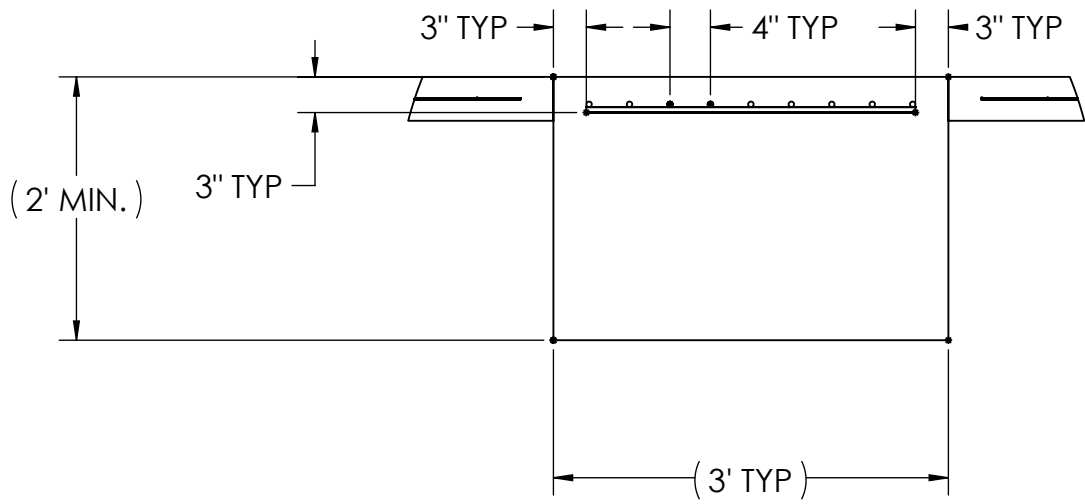
**NOTES:** LEFT AND RIGHT APPROACHES ARE MIRROR IMAGES OF EACH OTHER AND CONTAIN AN IDENTICAL PART LIST



### APPROACH PIER STANDARD VIEWS



### PIER STANDARD VIEWS



DESIGNED BY: S.JOHNSON 04/12/2021	DRAWN BY: S.JOHNSON 04/12/2021	PIER APPROVAL: S.JOHNSON 04/12/2021	<b>RICE LAKE</b> WEIGHING SYSTEMS	
TREATMENT: NONE	THIS DRAWING AND INFORMATION CONTAINED HEREIN IS AND REMAINS THE PROPERTY OF RICE LAKE WEIGHING SYSTEMS INC. - HEREINAFTER REFERRED TO AS RLWS. IT MAY BE USED ONLY FOR RLWS' PROPOSAL AND/OR ITS CUSTOMER'S ORDERS. IT SHALL NOT BE DISCLOSED OR COPIED WITHOUT RLWS' SPECIFIC WRITTEN CONSENT AND SHALL BE IMMEDIATELY RETURNED UPON REQUEST.	UNLESS OTHERWISE SPECIFIED UNITS TO BE INCHES ALL THREADS TO BE CLASS 2 ALL DIMENSIONS APPLICABLE AFTER TREATMENT	DESCRIPTION: FOUNDATION, CONCRETE PIER 110' X 10' OTR SERIES TRUCK SCALE	
NUMBER OF CRANES: 1	DO NOT SCALE DRAWING SURFACE FINISH	TOLERANCES DRAWING TOLERANCES UNLESS OTHERWISE SPECIFIED .XX: ± .XXX: ± ANGLE: ±	SCALE: 1:48 SHEET: 3 OF 3 MATERIAL:	REV: A
ESTIMATED WEIGHT (POUNDS):		THIRD ANGLE PROJECTION:	206402	