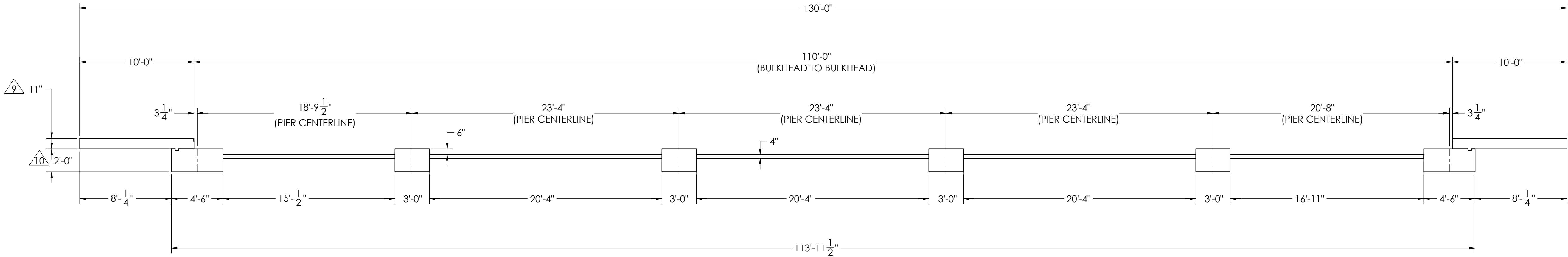
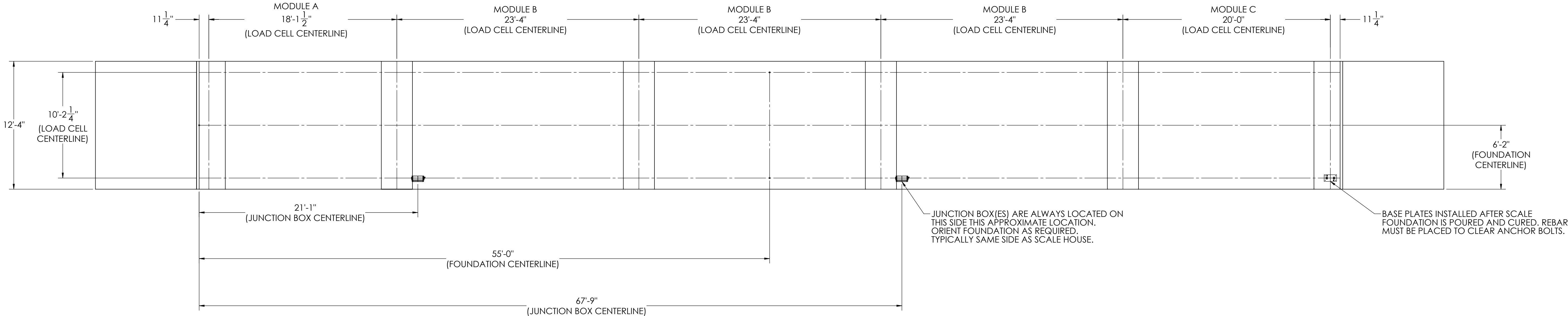


DETAILS




REVISION				
REV.	ECO	DESCRIPTION	INIT	DATE
A		ENGINEERING RELEASE	SPJ	04/27/2021



NOTES:

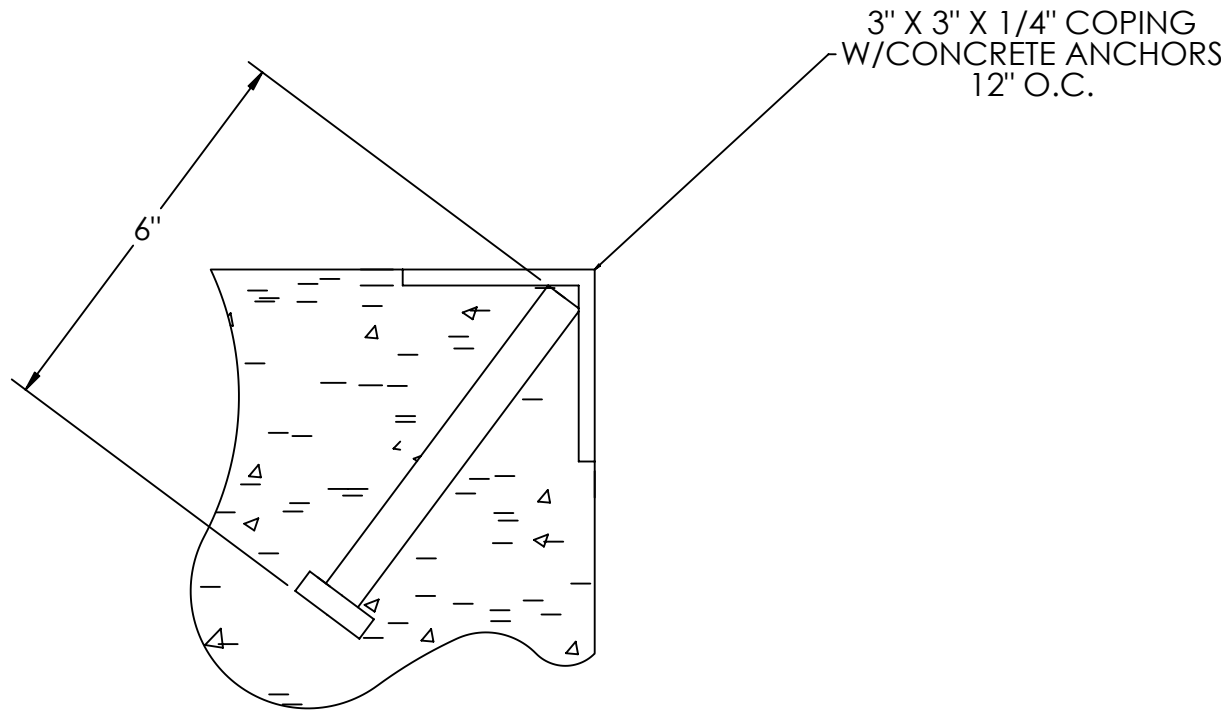
- 1) CONCRETE: f'_c = 3000 PSI @ 28 DAYS.
- 2) REINFORCING STEEL: DEFORMED BARS ASTM A615 GRADE 60.
- 3) STATE AND LOCAL AGENCIES MAY HAVE VARIOUS REQUIREMENTS FOR APPROACH RAMP LENGTH, PITCH, AND FOR CLEAN OUT HEIGHT. PLEASE CHECK WITH ALL AGENCIES PRIOR TO CONSTRUCTION.
- 4) MONOLITHIC POUR IS ALLOWED AT CONTRACTOR'S DISCRETION.
- 5) DEVELOP AND MAINTAIN SITE GRADES WHICH WILL RAPIDLY DRAIN SURFACE AND ROOF RUN-OFF AWAY FROM FOUNDATION.
- 6) FOOTINGS HAVE BEEN DESIGNED FOR A MINIMUM SOIL PRESSURE OF 2500 PSF. IT WILL BE THE RESPONSIBILITY OF OTHERS TO VERIFY THIS VALUE.
- 7) WHERE REINFORCING BARS ARE SHOWN CONTINUOUS, LAP SPLICE BARS 40 DIAMETERS.
- 8) APPROACHES TO BE A COMMON PLANE WITHIN 1/4".

- △ APPROACH THICKNESS MAY BE 10" MINIMUM WHERE ALLOWED BY STATE REGULATIONS
- △ FOUNDATION MUST EXTEND A MINIMUM OF 12" BELOW THE FROST PENETRATION LINE

DESIGNED BY DATE S. JOHNSON 04/27/2021		DRAWN BY DATE S. JOHNSON 04/27/2021		PIER APPROVAL DATE S. JOHNSON 04/27/2021			
TREATMENT NONE		THIS DRAWING AND INFORMATION CONTAINED HEREIN IS AND REMAINS THE PROPERTY OF RICE LAKE WEIGHING SYSTEMS INC. - HEREINAFTER REFERRED TO AS RLWS. IT MAY BE USED ONLY FOR RLWS' PROPOSAL AND/OR ITS CUSTOMER'S ORDERS. IT SHALL NOT BE DISCLOSED OR COPIED WITHOUT RLWS' SPECIFIC WRITTEN CONSENT AND SHALL BE IMMEDIATELY RETURNED UPON REQUEST.		UNLESS OTHERWISE SPECIFIED UNITS TO BE INCHES ALL THREADS TO BE CLASS 2 ALL DIMENSIONS APPLICABLE AFTER TREATMENT			
NUMBER OF CRANES: MINIMUM CRANE CAPACITY:		TOLERANCES DRAWING TOLERANCES UNLESS OTHERWISE SPECIFIED		DESCRIPTION FOUNDATION, CONCRETE PIER 110' x 12' OTR-LP SERIES TRUCK SCALE			
		DO NOT SCALE DRAWING SURFACE FINISH ✓		SCALE 1:60	SHEET 1 OF 3	MATERIAL	
ESTIMATED WEIGHT (POUNDS):		ANGLE: ±				206554	REV A

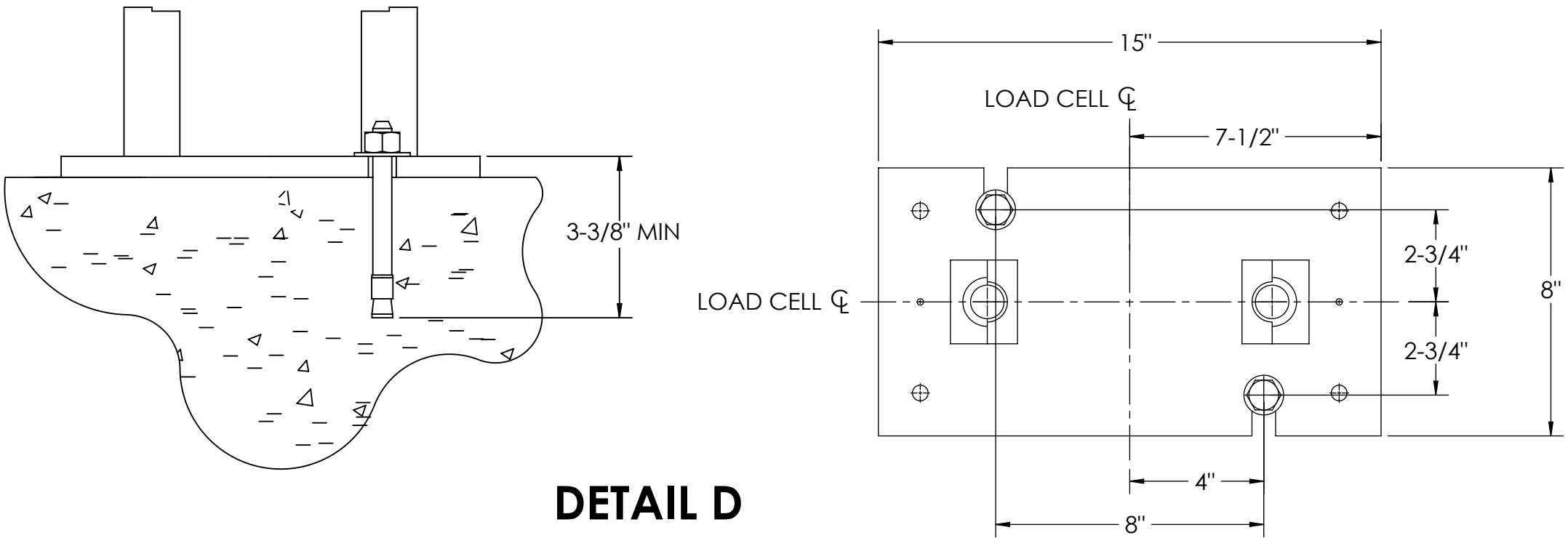
CONCRETE SCHEDULE			
VOLUME (CUBIC YARDS)			
APPROACHES			8.4
CLEANOUT			14.2
PIERS			19.2
TOTAL			41.8
MISC. STEEL			
PIT COPING	3 X 3 X 1/4	25 LN .FT	123 LBS

VOLUME SHOWN FOR STATED PIER DEPTH.
ADD ADDITIONAL CONCRETE FOR
DEEPER PIERS AS NEEDED.

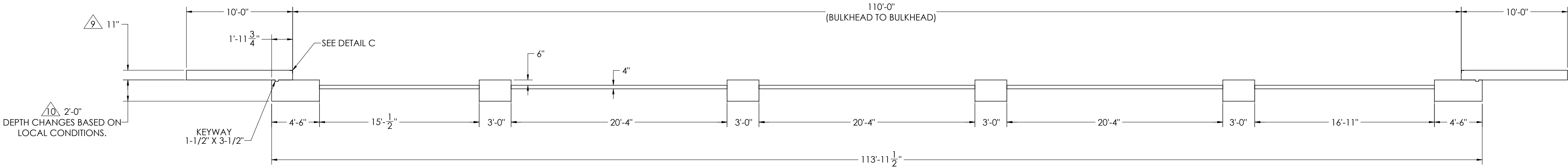
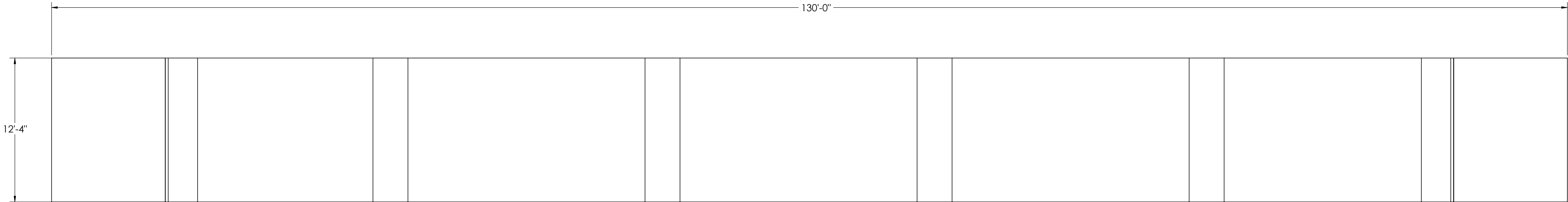


DETAIL C

CONCRETE LAYOUT

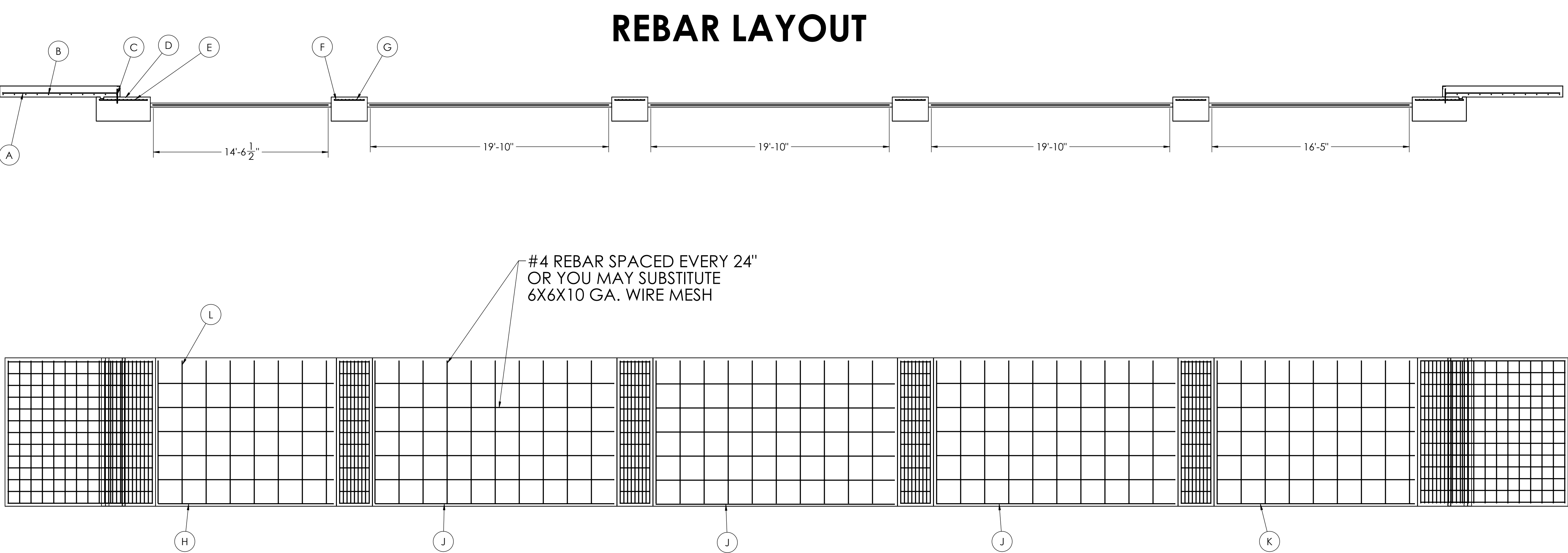


DETAIL D



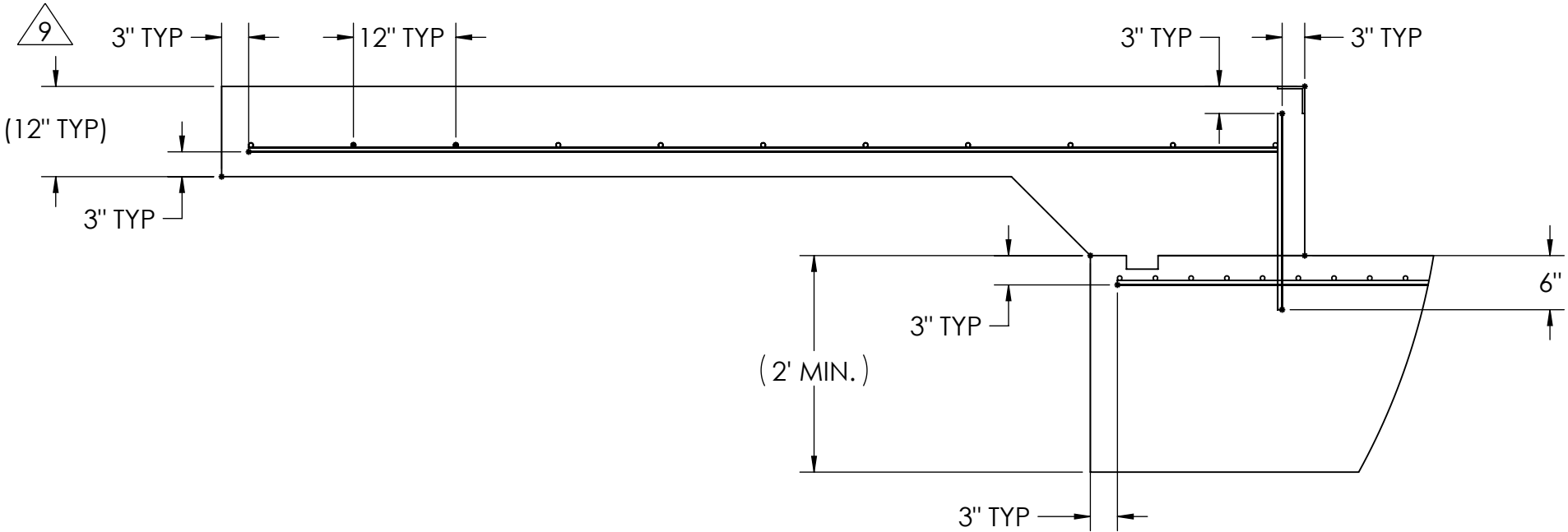
DESIGNED BY: J. JOHNSON S. JOHNSON 04/27/2021	DRAWN BY: J. JOHNSON S. JOHNSON 04/27/2021	PIER APPROVAL DATE: S. JOHNSON 04/27/2021	RICE LAKE WEIGHING SYSTEMS	
TREATMENT NONE	THIS DRAWING AND INFORMATION CONTAINED HEREIN IS AND REMAINS THE PROPERTY OF RICE LAKE WEIGHING SYSTEMS INC. - HEREINAFTER REFERRED TO AS RLWS. IT MAY BE USED ONLY FOR RLWS' PROPOSAL AND/OR ITS CUSTOMER'S ORDERS. IT SHALL NOT BE DISCLOSED OR COPIED WITHOUT RLWS' SPECIFIC WRITTEN CONSENT AND SHALL BE IMMEDIATELY RETURNED UPON REQUEST.	UNLESS OTHERWISE SPECIFIED UNITS TO BE INCHES ALL THREADS TO BE CLASS 2 ALL DIMENSIONS APPLICABLE AFTER TREATMENT	DESCRIPTION FOUNDATION, CONCRETE PIER 110' X 12' OTR-LP SERIES TRUCK SCALE	
NUMBER OF CRANES: MINIMUM CRANE CAPACITY: ESTIMATED WEIGHT (POUNDS)	DO NOT SCALE DRAWING SURFACE FINISH TOLERANCES DRAWING TOLERANCES UNLESS OTHERWISE SPECIFIED .XX: .XXX: ANGLE: ✓	SCALE 1:60 SHEET 2 OF 3 THIRD ANGLE PROJECTION FPM	MATERIAL 206554	REV. A

MATERIAL REQUIREMENTS				
REBAR SCHEDULE				
BAL. NO.	QUANTITY	LENGTH (FT-IN.)	DESCRIPTION	WEIGHT
A	26	9' 6"	# 4 @ 12 O.C.	165
B	22	11' 10"	# 4 @ 12 O.C.	174
C	26	1' 9 1/2"	# 4 @ 12 O.C.	31
D	26	4' 0"	# 4 @ 12 O.C.	69
E	26	11' 10"	# 4 @ 4 O.C.	206
F	52	2' 6"	# 4 @ 12 O.C.	87
G	36	11' 10"	# 4 @ 4 O.C.	285
CLEANOUT SCHEDULE				
H	6	14' 6 1/2"	# 4 @ 24 O.C.	58
J	18	19' 10"	# 4 @ 24 O.C.	238
K	6	16' 5"	# 4 @ 24 O.C.	66
L	47	11' 10"	# 4 @ 24 O.C.	372
TOTAL WEIGHT OF REBAR (LBS.)				1750
TOTAL LENGTH OF REBAR (FT.)				2621
WIRE MESH				6 X 6-10 GA. 940 SQ FT

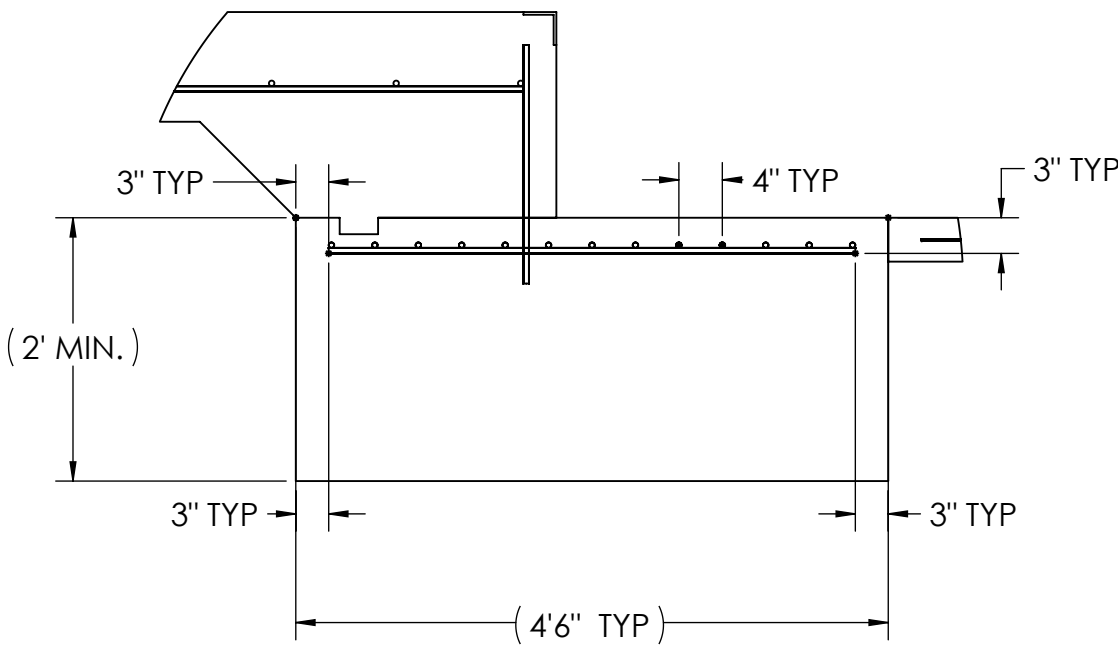


APPROACH STANDARD VIEWS

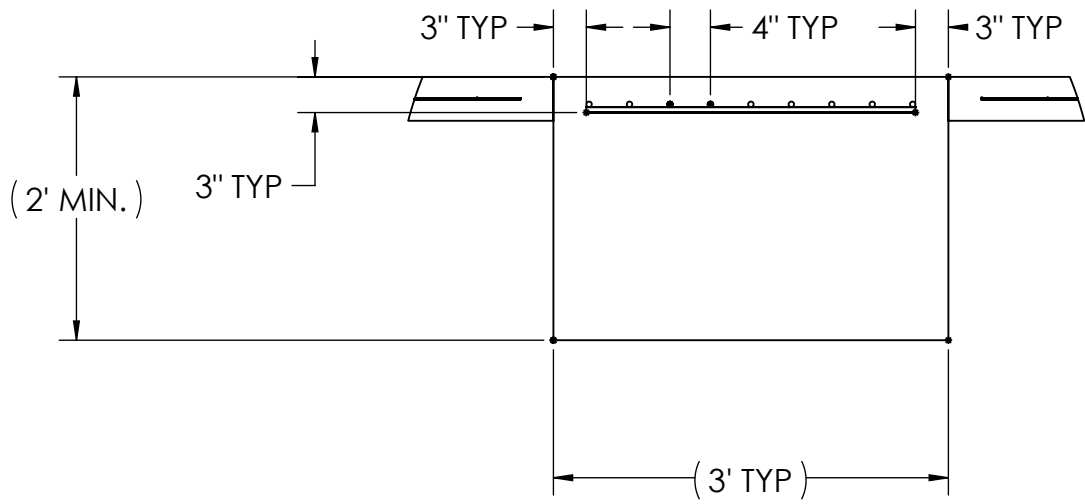
NOTES: LEFT AND RIGHT APPROACHES ARE MIRROR IMAGES OF EACH OTHER AND CONTAIN AN IDENTICAL PART LIST



APPROACH PIER STANDARD VIEWS



PIER STANDARD VIEWS



DESIGNED BY: J. JOHNSON 04/27/2021	DRAWN BY: J. JOHNSON 04/27/2021	PIER APPROVAL: J. JOHNSON 04/27/2021	RICE LAKE WEIGHING SYSTEMS	
TREATMENT NONE	THIS DRAWING AND INFORMATION CONTAINED HEREIN IS AND REMAINS THE PROPERTY OF RICE LAKE WEIGHING SYSTEMS INC. - HEREINAFTER REFERRED TO AS RLWS. IT MAY BE USED ONLY FOR RLWS' PROPOSAL AND/OR ITS CUSTOMER'S ORDERS. IT SHALL NOT BE DISCLOSED OR COPIED WITHOUT RLWS' SPECIFIC WRITTEN CONSENT AND SHALL BE IMMEDIATELY RETURNED UPON REQUEST.	UNLESS OTHERWISE SPECIFIED UNITS TO BE INCHES ALL THREADS TO BE CLASS 2 ALL DIMENSIONS APPLICABLE AFTER TREATMENT	DESCRIPTION FOUNDATION, CONCRETE PIER 110' X 12' OTR-LP SERIES TRUCK SCALE	
NUMBER OF CRANES: MINIMUM CRANE CAPACITY: ESTIMATED WEIGHT (POUNDS):	DO NOT SCALE DRAWING SURFACE FINISH TOLERANCES UNLESS OTHERWISE SPECIFIED .XX: ± .XXX: ± ANGLE: ±	SCALE 1:48	SHEET 3 OF 3	MATERIAL
THIRD ANGLE PROJECTION		206554		REV A