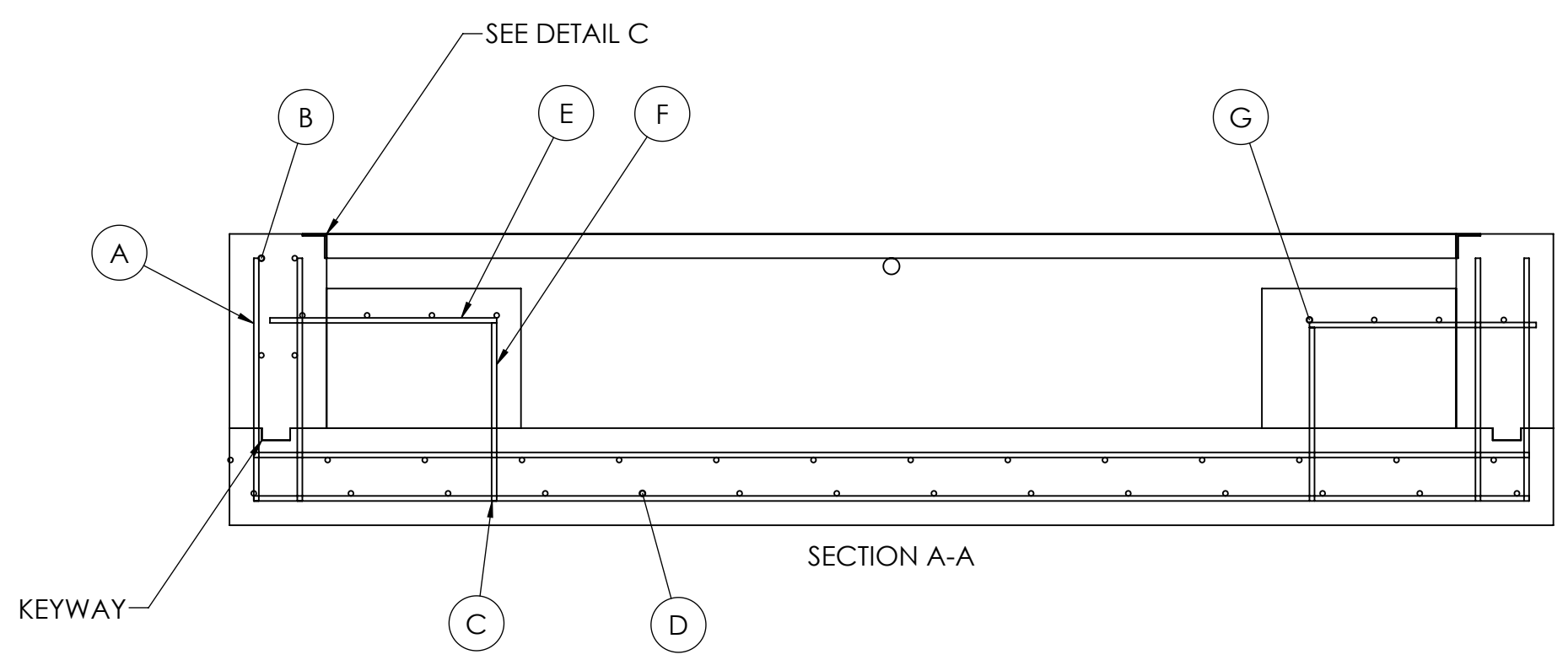
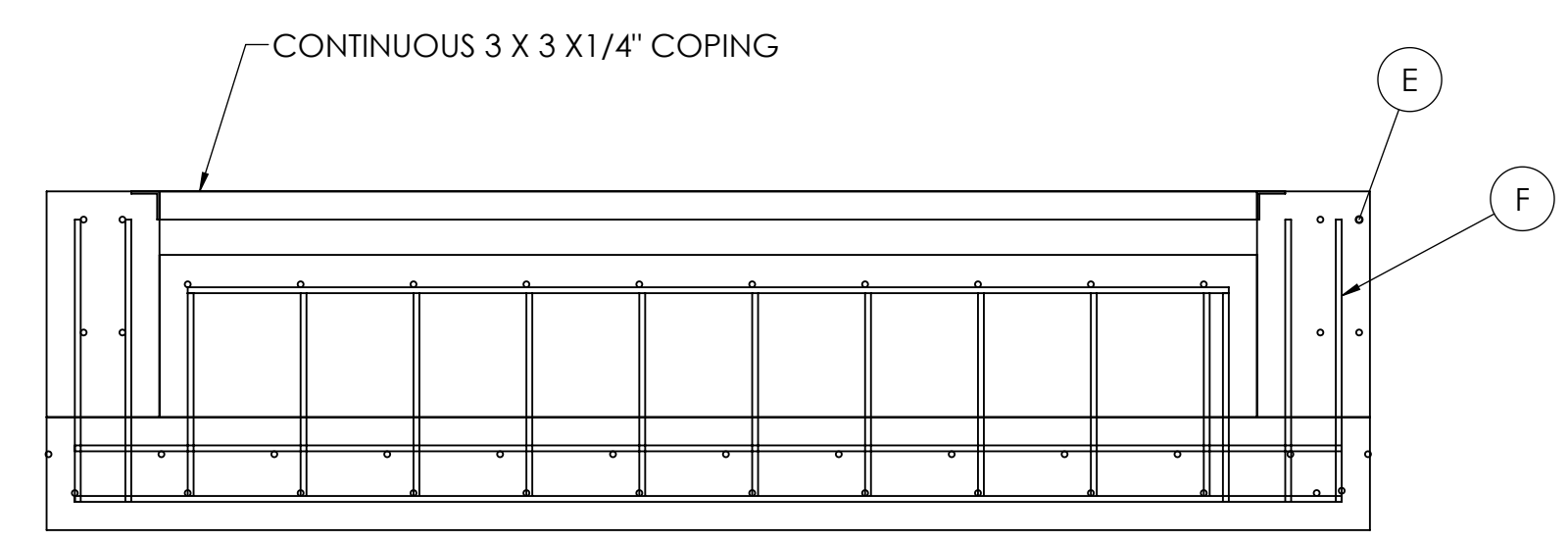
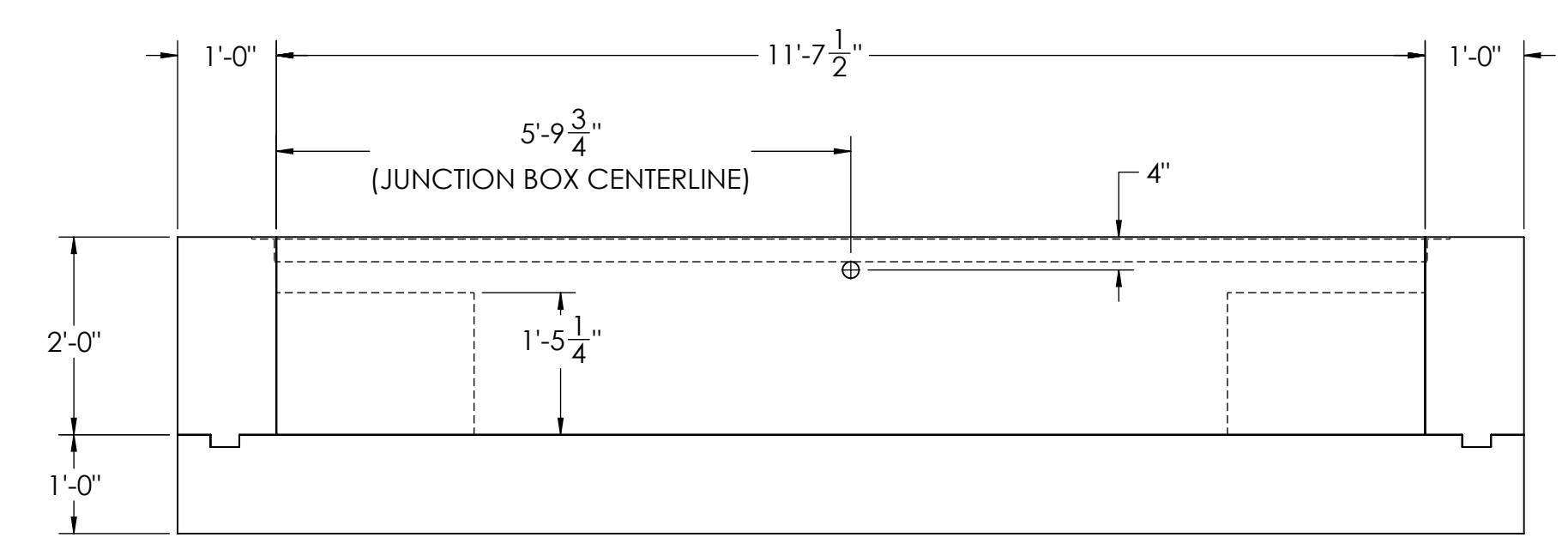
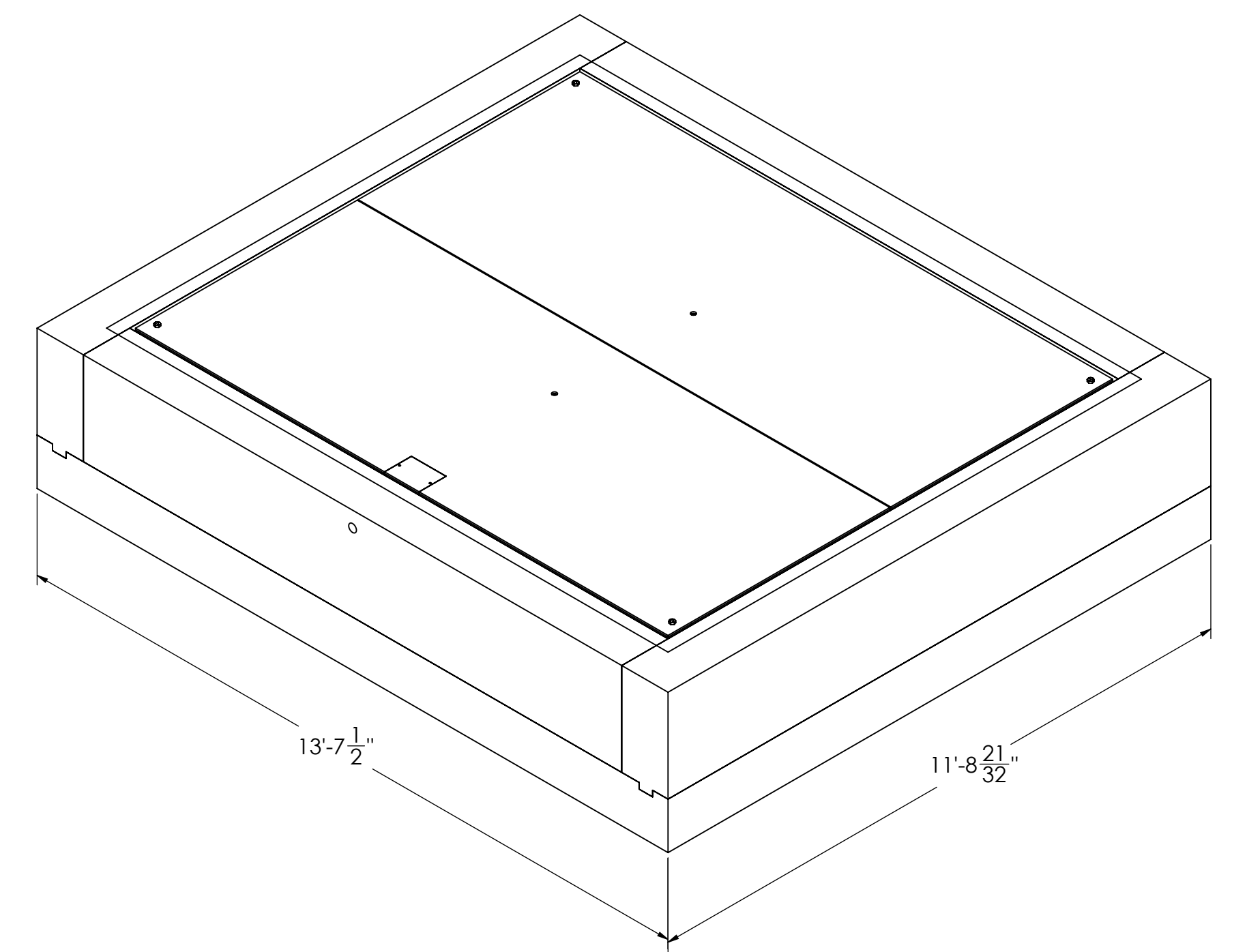
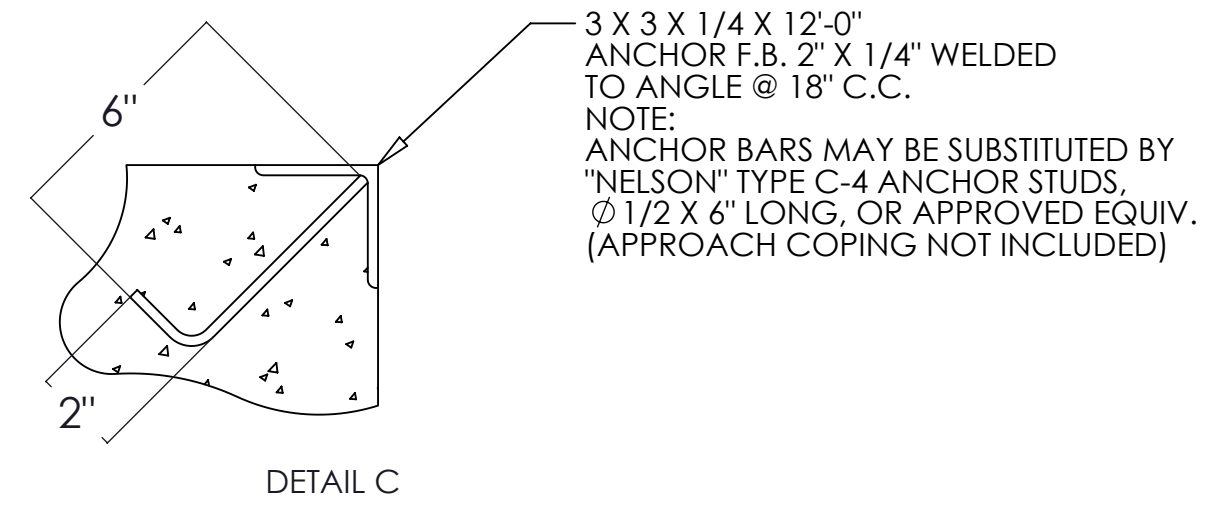
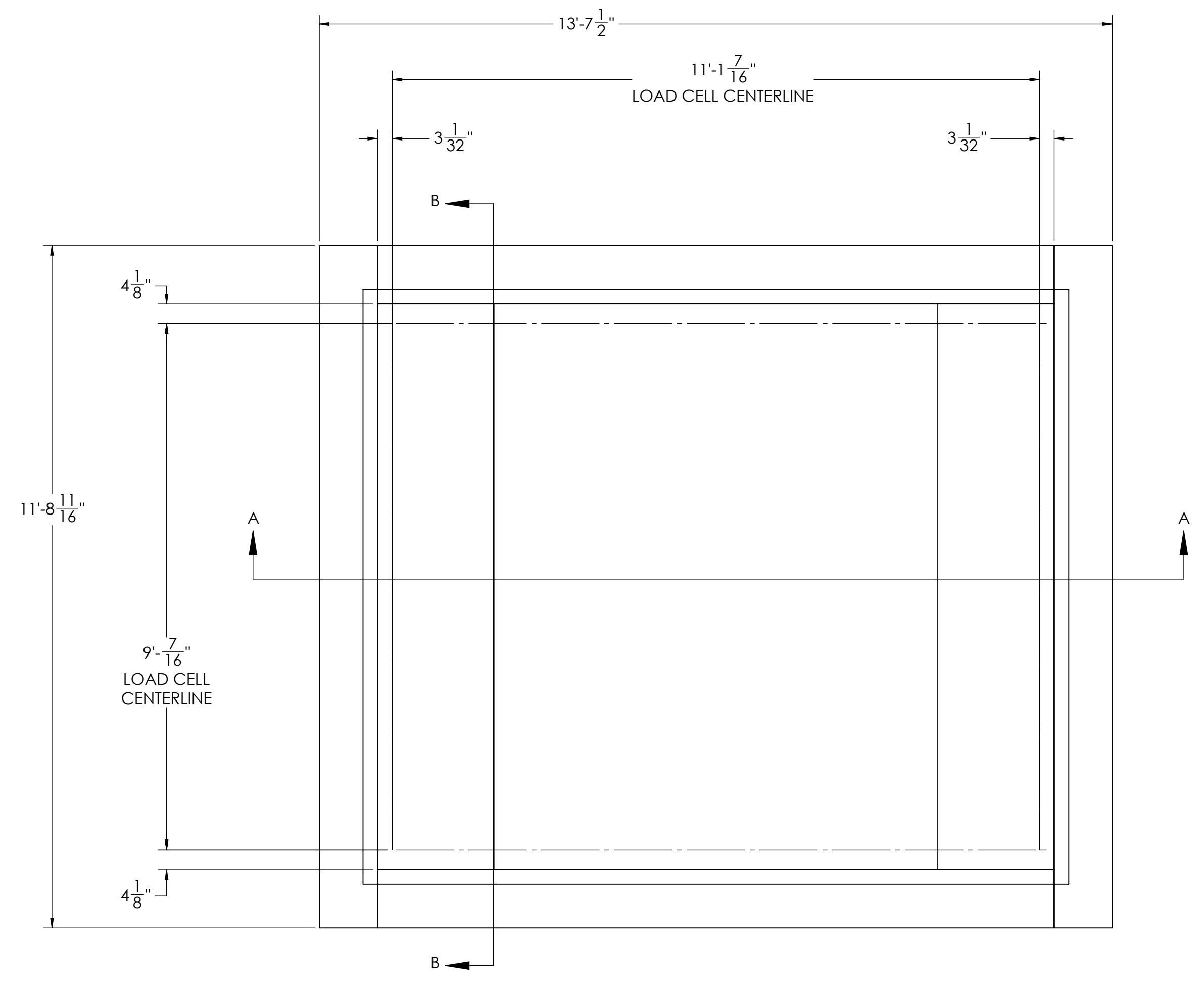


REVISION		INIT	DATE
REV	ECO	DESCRIPTION	
A	---	CUSTOMER DIMENSIONAL DRAWING	05/06/2026

MATERIAL REQUIREMENTS				
REBAR SCHEDULE				
BAL. NO.	QUANTITY	LENGTH (IN.)	DESCRIPTION	WEIGHT
A	48	30	# 5 @ 12 O.C.	125
B	8	136	# 5 @ 12 O.C.	95
C	26	136	# 5 @ 12 O.C.	307
D	28	136	# 5 @ 12 O.C.	331
E	20	22	# 5 @ 12 O.C.	38
F	20	22	# 5 @ 12 O.C.	38
G	8	136	# 5 @ 8 O.C.	95
TOTAL WEIGHT OF REBAR (LBS.)				1029
TOTAL LENGTH OF REBAR (FT.)				987
CONCRETE SCHEDULE				
				VOLUME (CUBIC YARDS)
FLOOR				6.3
PIERS				2.2
WALLS				3.6
TOTAL				12.1
MISC. STEEL				
PIT COPING	3 X 3 X 1/4	46 LN .FT	223 LBS	



- NOTES:
- 1) CONCRETE: f_c = 3500 PSI @ 28 DAYS.
 - 2) REINFORCING STEEL: DEFORMED BARS ASTM A615 GRADE 60.
 - 3) STATE AND LOCAL AGENCIES MAY HAVE VARIOUS REQUIREMENTS FOR APPROACH RAMP LENGTH, PITCH, AND FOR CLEAN OUT HEIGHT. PLEASE CHECK WITH ALL AGENCIES PRIOR TO CONSTRUCTION.
 - 4) MONOLITHIC POUR OF SLAB AND PIERS IS ALLOWED AT CONTRACTOR'S DISCRETION.
 - 5) DEVELOP AND MAINTAIN SITE GRADES WHICH WILL RAPIDLY DRAIN SURFACE AND ROOF RUN-OFF AWAY FROM FOUNDATION.
 - 6) FOOTINGS HAVE BEEN DESIGNED FOR A MINIMUM SOIL PRESSURE OF 3000 PSF, IT WILL BE THE RESPONSIBILITY OF OTHERS TO VERIFY THIS VALUE.
 - 7) WHERE REINFORCING BARS ARE SHOWN CONTINUOUS, LAP SPLICE BARS 40 DIAMETERS.
 - 8) APPROACHES TO BE A COMMON PLANE WITHIN 1/4".
 - 9) IF FROST CAN PENETRATE BELOW FOUNDATION, AT LEAST 18 INCHES OF WELL DRAINED, COMPACTED BASE MATERIAL MUST BE PROVIDED UNDER FOUNDATION

DESIGNED BY / DATE	DRAWN BY / DATE	PIER APPROVAL / DATE	FOUNDATION, CONCRETE PIT ROUGHDECK	
TREATMENT: NONE	THIS DRAWING AND INFORMATION CONTAINED HEREIN IS AND REMAINS THE PROPERTY OF RICE LAKE WEIGHING SYSTEMS INC. - HEREINAFTER REFERRED TO AS RLWS. IT MAY BE USED ONLY FOR RLWS' PROPOSAL AND/OR ITS CUSTOMERS' ORDERS. IT SHALL NOT BE DISCLOSED OR COPIED WITHOUT RLWS' SPECIFIC WRITTEN CONSENT AND SHALL BE IMMEDIATELY RETURNED UPON REQUEST.	UNLESS OTHERWISE SPECIFIED UNITS TO BE INCHES ALL THREADS TO BE CLASS 2 ALL DIMENSIONS APPLICABLE AFTER TREATMENT	169647 AX-1 SERIES SCALE	
NUMBER OF CRANES: 1	DO NOT SCALE DRAWING	TOLERANCES UNLESS OTHERWISE SPECIFIED	SCALE: 1:20	SHEET: 1 OF 1
MINIMUM CRANE CAPACITY: 10,000 LBS	SURFACE FINISH: .XX: .XXX: ✓	ANGLE: ✓	MATERIAL: 234598	
ESTIMATED WEIGHT (POUNDS):			THIRD ANGLE PROJECTION	REV: A

